

Fitting Instructions:

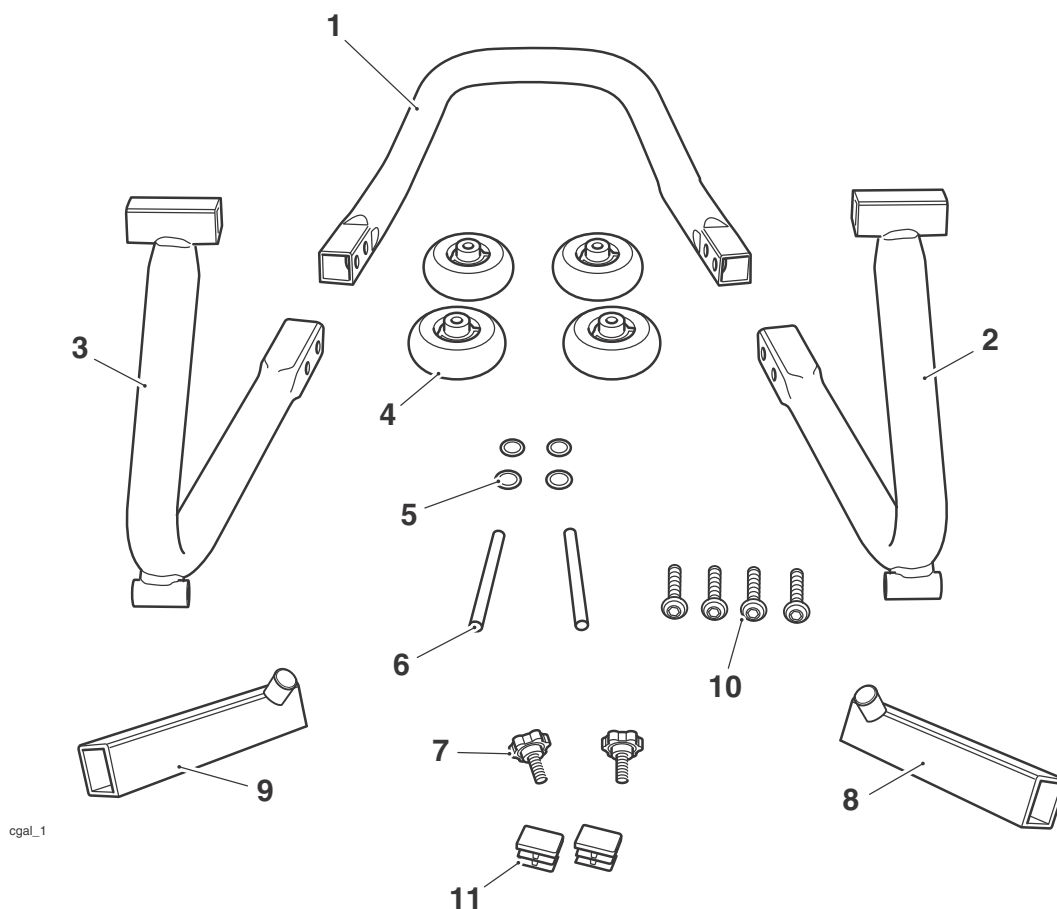
Daytona 675, Street Triple, Street Triple R, Sprint 1050, Speed Triple 1050 and Tiger 1050

A9938157

Thank you for choosing this Triumph genuine accessory kit. This accessory kit is the product of Triumph's use of proven engineering, exhaustive testing, and continuous striving for superior reliability, safety and performance.

Completely read all of these instructions before commencing the installation of the accessory kit in order to become thoroughly familiar with the kit's features and the installation process.

These instructions should be considered a permanent part of your accessory kit, and should remain with it.



Parts Supplied:

1. Handle	1 off	7. Knob	2 off
2. Support, left hand	1 off	8. Bracket, left hand	1 off
3. Support, right hand	1 off	9. Bracket, right hand	1 off
4. Wheel	4 off	10. Bolt, M8 x 12 mm	4 off
5. Washer, starlock	4 off	11. Blanking plug	2 off
6. Spindle, wheel	2 off		



Warning

This accessory kit is designed for use on Triumph Daytona 675, Street Triple, Street Triple R, Sprint 1050, Speed Triple 1050 and Tiger 1050 motorcycles only and should not be fitted to any other manufacturer's motorcycle. Fitting this accessory kit to any other manufacturer's motorcycle will affect the stability of the motorcycle. This may affect the user's ability to control the motorcycle and could cause an accident.



Warning

The paddock stand should only be used on a firm, level surface to prevent any possibility of the motorcycle falling while raising or servicing it.

Failure to follow this warning may result in the motorcycle falling causing personal injury and damage to the motorcycle.



Warning

The front paddock stand should only be used if the rear of the motorcycle is securely held in place i.e. raised on a rear paddock stand.

Failure to follow this warning may result in the motorcycle falling causing personal injury and damage to the motorcycle.

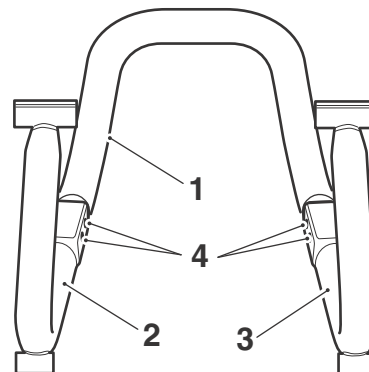


Warning

Never rely on a single means of support when working on the motorcycle. Use additional safety supports and straps to prevent toppling.

Assembly

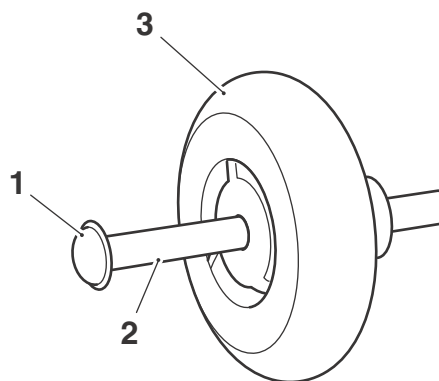
1. Fit the left and right hand supports to the handle. Secure with the bolts from the kit and tighten to **16 Nm**.



cgay

1. Handle
2. Support, right hand
3. Support, left hand
4. Bolts

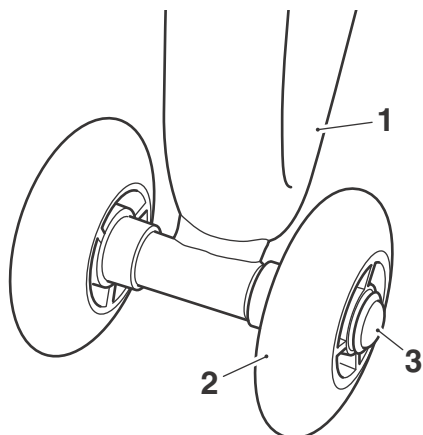
2. Fit a starlock washer to one end of both wheel spindles. Then fit one of the wheels to each of the spindles with the flat edge of the wheel next to the starlock washer.



cgan

1. Starlock washer
2. Wheel spindle
3. Wheel

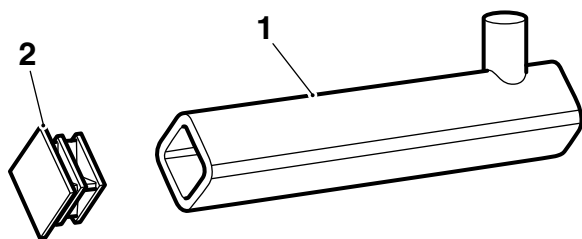
3. Fit the wheel and spindle assembly to the support then fit the second wheel and starlock washer as shown below.



cgao

1. Support
2. Wheel
3. Starlock washer

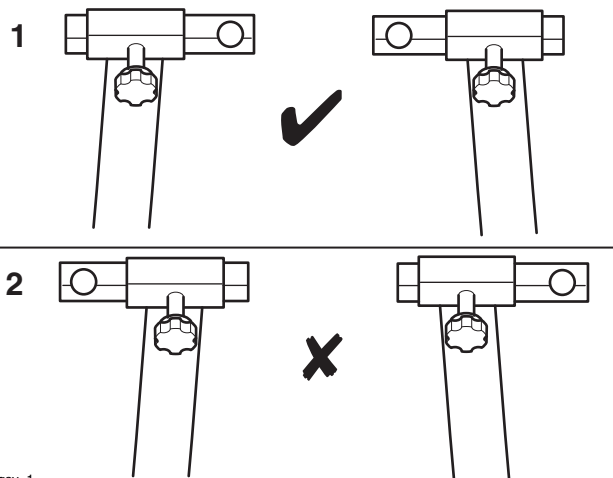
4. Fit the blanking plugs to the brackets.



cgaz

1. Bracket
2. Blanking plug

5. Fit the brackets to the supports. Ensure that the peg on the bracket is on the inside edge of the paddock stand support.



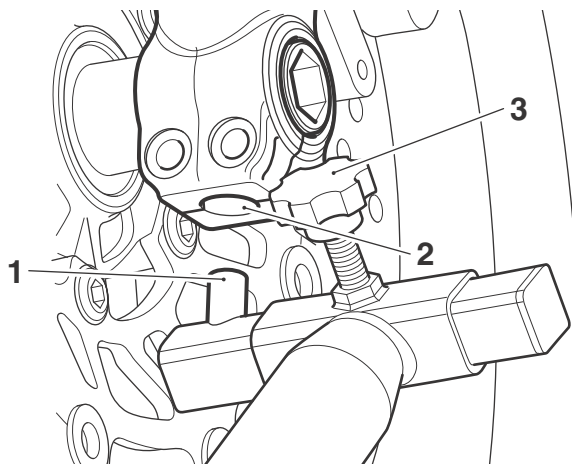
cgav_1

1. Correctly fitted brackets
2. Incorrectly fitted brackets

6. Tighten the knobs to secure the brackets.

Front Paddock Stand Operation

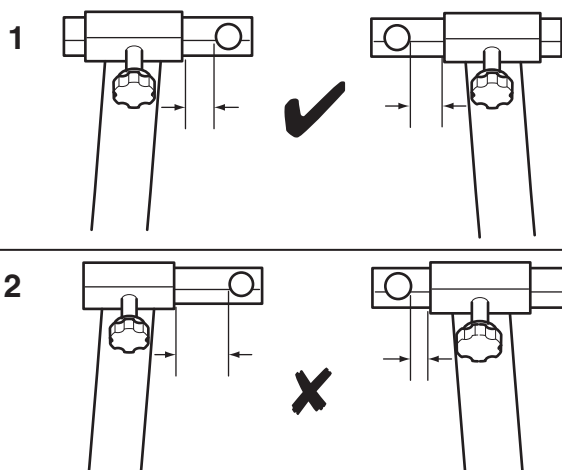
1. With the aid of an assistant holding the motorcycle level, align the paddock stand such that the front wheel is aligned with the centre of the paddock stand.
2. Loosen the knobs securing the brackets and align the pegs on the brackets to the holes in the underside of the forks.



1. Peg, paddock stand
2. Front fork, paddock stand peg mounting
3. Knob

Note:

- Ensure the brackets are evenly spaced between the paddock stand supports and the motorcycle's front forks.



1. Correctly spaced brackets
2. Incorrectly spaced brackets

3. Tighten the knobs to secure the brackets.



Warning

When raising or lowering the paddock stand, have an assistant hold and stabilise the motorcycle to prevent risk of injury from the falling motorcycle.

4. With the aid of an assistant holding the motorcycle level, ensure that the paddock stand is level and all wheels are touching the ground.



Warning

To prevent injury, always hold the top of the paddock stand handle when lifting the motorcycle.

Failure to hold the top of the handle may result in the operator's fingers becoming trapped between the paddock stand and the ground.

5. To raise the front of the motorcycle, carefully pull the handle down until it is on the ground.
6. To lower the front of the motorcycle, with the aid of an assistant holding it level, slowly pull the handle up until the wheel touches the ground. Ensure the motorcycle is stable before completely removing the paddock stand.