

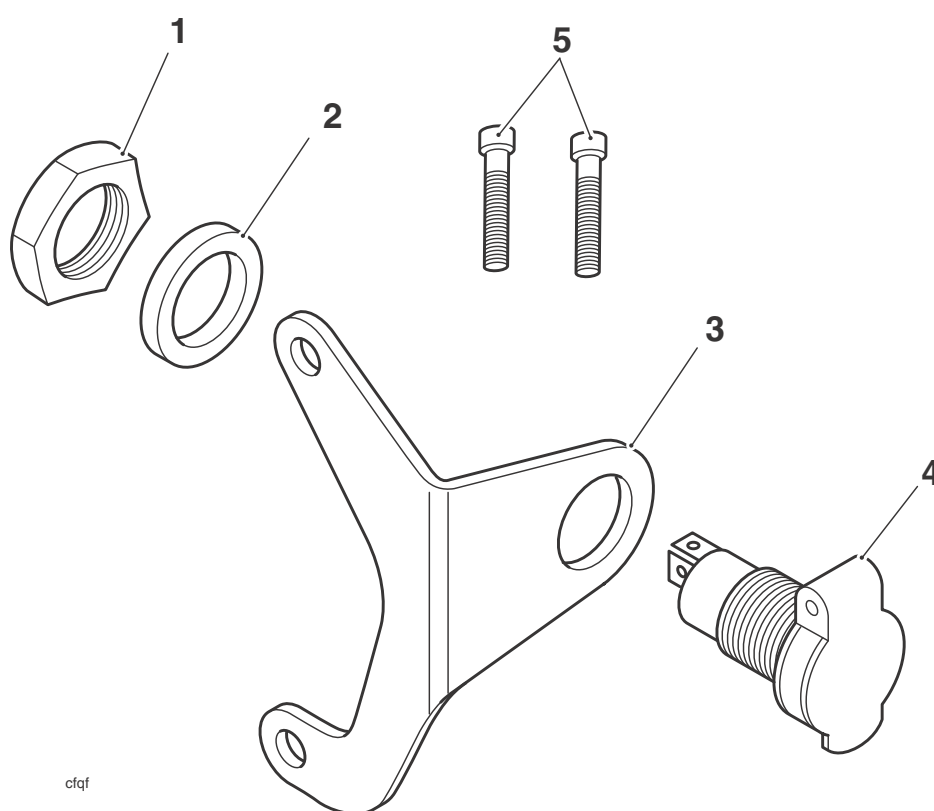
English

Fitting Instructions: Thunderbird A9938039

Thank you for choosing this Triumph genuine accessory kit. This accessory kit is the product of Triumph's use of proven engineering, exhaustive testing, and continuous striving for superior reliability, safety and performance.

Completely read all of these instructions before commencing the installation of the accessory kit in order to become thoroughly familiar with the kit's features and the installation process.

These instructions should be considered a permanent part of your accessory kit, and should remain with it even if your accessory equipped motorcycle is subsequently sold.



Parts Supplied:

1. Nut	1 off	4. Auxiliary power socket	1 off
2. Washer	1 off	5. Screw, encapsulated	2 off
3. Mounting bracket	1 off		



Warning

This accessory kit is designed for use on Triumph Thunderbird motorcycles only and should not be fitted to any other manufacturer's motorcycle. Fitting this accessory kit to any other manufacturer's motorcycle will affect the performance, stability and handling of the motorcycle. This may affect the rider's ability to control the motorcycle and could cause an accident.



Warning

Always have Triumph approved parts, accessories and conversions fitted by a trained technician of an authorised Triumph dealer. The fitment of parts, accessories and conversions by a technician who is not of an authorised Triumph dealer may affect the handling, stability or other aspects of the motorcycle's operation which may result in loss of motorcycle control and an accident.



Warning

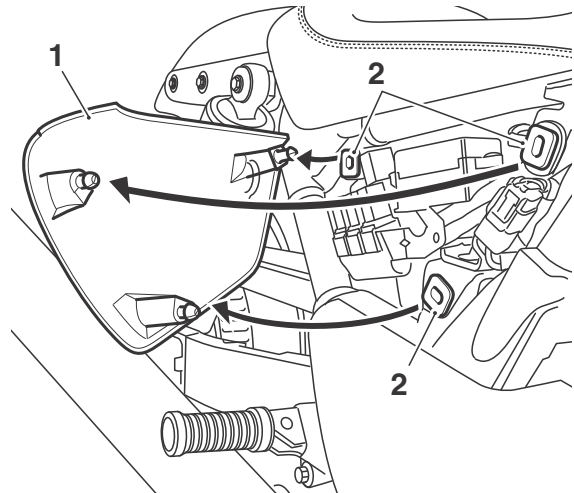
Throughout this operation, ensure that the motorcycle is stabilised and adequately supported to prevent risk of injury from the motorcycle falling.



Warning

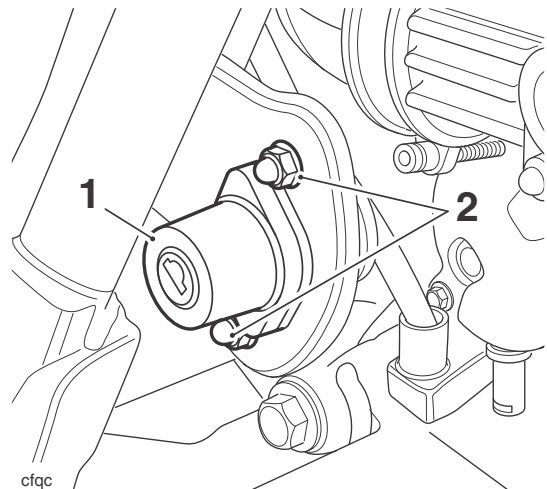
A torque wrench of known accurate calibration must be used when fitting this accessory kit. Failure to tighten any of the fasteners to the correct torque specification may result in loss of motorcycle control and an accident.

1. Remove the rider's seat, as described in the service manual.
2. Disconnect the battery, negative (black) lead first.
3. Remove the right hand side panel as shown below.



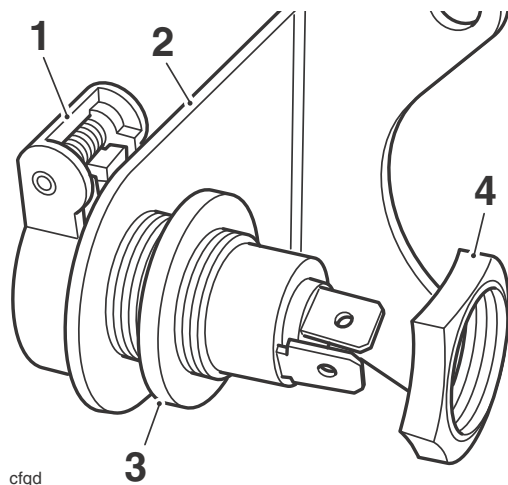
1. Side panel
2. Grommets

4. Remove the nuts and screws securing the ignition switch to the frame. Discard the screws and retain the nuts for re-use.



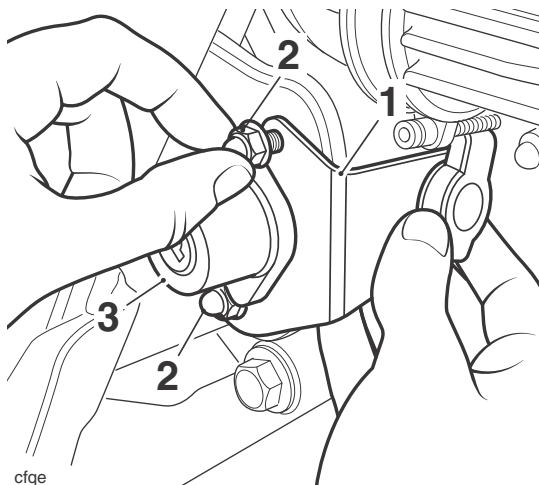
1. Ignition switch
2. Nuts

5. Fit the auxiliary power socket and washer to the bracket as shown below. Secure with the nut and tighten to **5 Nm**.



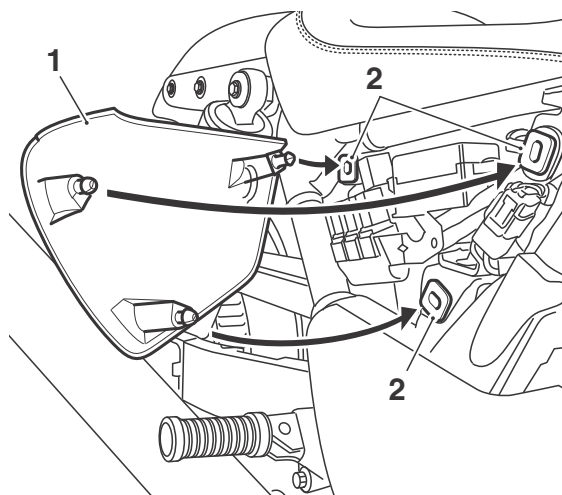
1. Auxiliary power socket
2. Mounting bracket
3. Washer
4. Nut

6. Locate the two-pin electrical connector marked with blue tape, near the electrical connector for the motorcycle alarm. Fit the connector to the connectors on the back of the auxiliary power socket.
7. Fit the auxiliary socket and bracket assembly to the ignition switch mounting as shown below. Secure using the encapsulated screws from the kit and the original nuts. Tighten the nuts to **7 Nm**.



1. Auxiliary socket bracket
2. Nuts
3. Ignition switch

8. Refit the right hand side panel as shown below.




1. Side panel
2. Grommets

9. Reconnect the battery, positive (red) lead first.
10. Refit the rider's seat, as described in the service manual.


Fuse number 6 (15 A) protects the auxiliary power socket and the heated grips circuits. Refer to the owner handbook for its location.

To protect the battery from excessive discharge while using fitted electrical accessories, use the table below as a guide for how much current should be drawn through the auxiliary socket.

Fog lights (if fitted)	Heated grips (if fitted)	Auxiliary power socket maximum rated power
OFF	OFF	125 W (10.5 A)
OFF	ON	100 W (8.5 A)
ON	OFF	50 W (4.2 A)
ON	ON	35 W (3 A)

 **Warning**


If, after fitment of this accessory kit, you have any doubt about the performance of any aspect of the motorcycle, contact an authorised Triumph dealer and do not ride the motorcycle until the authorised dealer has declared it fit for use. Riding a motorcycle when there is any doubt as to any aspect of the performance of the motorcycle may result in loss of control of the motorcycle leading to an accident.

 **Warning**

Never ride an accessory equipped motorcycle at speeds above 80 mph (130 km/h).
The presence of accessories will cause changes in the stability and handling of the motorcycle. Failure to allow for changes in motorcycle stability may lead to loss of control or an accident.
Remember that the 80 mph (130 km/h) limit will be reduced by the fitting of non-approved accessories, incorrect loading, worn tyres, overall motorcycle condition and poor road or weather conditions.

 **Warning**

The motorcycle must not be operated above the legal road speed limit except in closed-course conditions.

 **Warning**

Only operate this Triumph motorcycle at high speed in closed-course on road competition or on closed-course racetracks. High speed operation should only be attempted by riders who have been instructed in the techniques necessary for high speed riding and are familiar with the motorcycle's characteristics in all conditions.
High speed operation in any other circumstances is dangerous and will lead to loss of motorcycle control and an accident.