

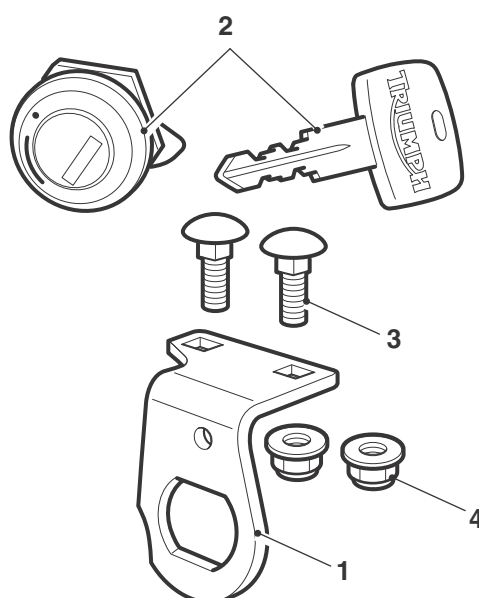
## English

### Fitting Instructions: Rocket III Touring A9938030

Thank you for choosing this Triumph genuine accessory kit. This accessory kit is the product of Triumph's use of proven engineering, exhaustive testing, and continuous striving for superior reliability, safety and performance.

Completely read all of these instructions before commencing the installation of the accessory kit in order to become thoroughly familiar with the kit's features and the installation process.

These instructions should be considered a permanent part of your accessory kit, and should remain with it even if your accessory equipped motorcycle is subsequently sold.



#### Parts Supplied:

1. Mounting bracket	1 off	3. Carriage bolt, M6 x 16	2 off
2. Lock set	1 off	4. Nut, M6	2 off

## ! Warning

This accessory kit is designed for use on Triumph Rocket III Touring motorcycles only and should not be fitted to any other Triumph model or to any other manufacturer's motorcycle. Fitting this accessory kit to any other Triumph model, or to any other manufacturer's motorcycle, may interfere with the rider and could affect the handling, stability or other aspects of the motorcycles operation which may result in loss of motorcycle control and an accident.

## ! Warning

Always have Triumph approved parts, accessories and conversions fitted by a trained technician of an authorised Triumph dealer. The fitment of parts, accessories and conversions by a technician who is not of an authorised Triumph dealer may affect the handling, stability or other aspects of the motorcycle's operation, which may result in loss of motorcycle control and an accident.

## ! Warning

Throughout this operation, ensure that the motorcycle is stabilised and adequately supported to prevent risk of injury from the motorcycle falling.

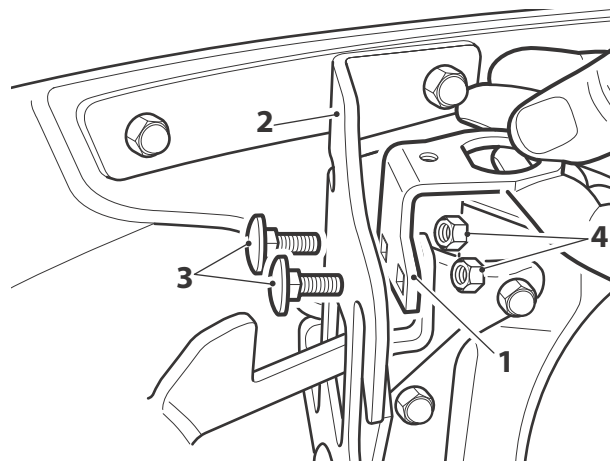
## ! Warning

A torque wrench of known accurate calibration must be used when fitting this accessory kit. Failure to tighten any of the fasteners to the correct torque specification may result in loss of motorcycle control and an accident.

### Note:

- **The windshield lock kit is suitable for fitment to original equipment and Triumph approved accessory windshields only.**

1. Remove the windshield as described in the Owner's Handbook.
2. Fit the lock mounting bracket to the inside face of the left hand windshield mounting bracket. Secure with the two carriage bolts and nuts as shown. It may be necessary to move the screen release lever to gain access to the rear fixing. Tighten the fixings to **9 Nm**.

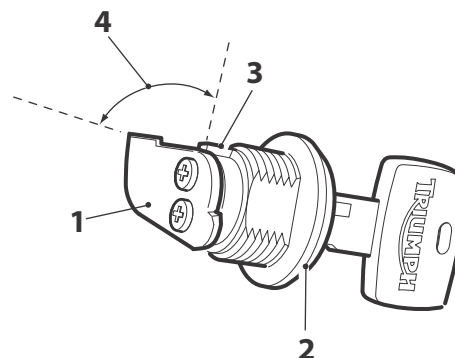


1. Lock mounting bracket
2. Windshield bracket, left hand
3. Carriage bolts
4. Nuts

3. Remove the lock retaining nut from the lock barrel.

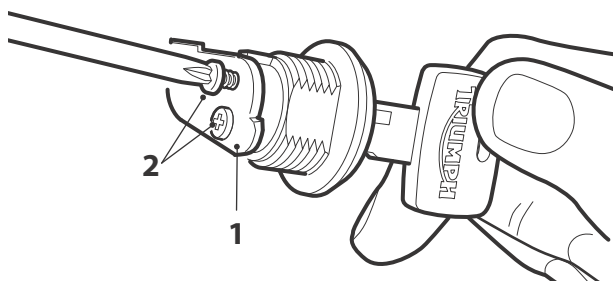
### Note:

- **The windshield lock barrel can be replaced with the spare barrel provided with the motorcycle. This will allow use of the motorcycle ignition key for the operation of the lock. Steps 4 to 8 detail this procedure.**
4. Insert the key into the lock, note the position of the lever relative to peg at the top of the lock housing to ensure correct fitment of the new barrel.



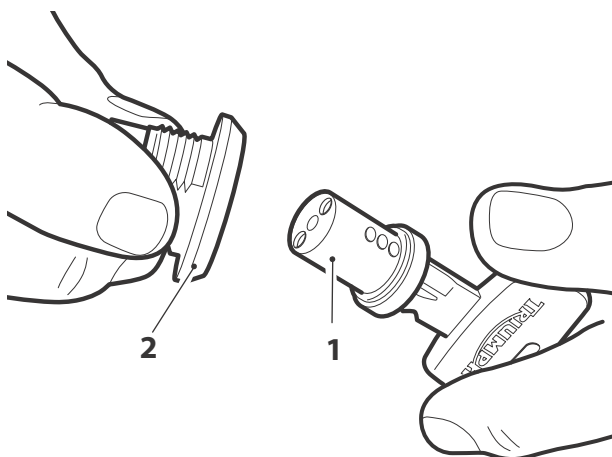
1. Lever
2. Lock housing
3. Peg
4. Orientation

5. Remove the fixings retaining the lock lever to the lock barrel and remove the lever. Retain the lever and fixings for re-use.



1. Lever
2. Fixings

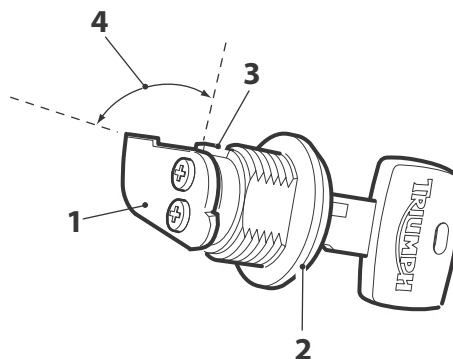
6. Note the position of the lock barrel relative to the lock housing. Remove the barrel from the lock housing.



1. Barrel
2. Lock housing

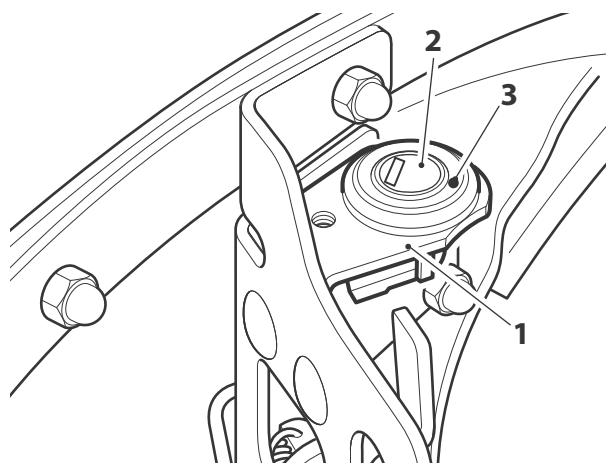
7. Fit the spare barrel supplied with the motorcycle, with key inserted and in the same position, as noted when removing the barrel from the lock assembly.

8. Secure the lever to the barrel with the original fixings. Ensure the lever is in the same orientation, relative to the peg at the top of the lock housing, noted before removal from the lock assembly.



1. Lever
2. Lock housing
3. Peg
4. Orientation

9. Fit the lock assembly into the mounting bracket ensuring the dot indicator on the lock face is positioned as shown.



1. Mounting bracket
2. Lock assembly
3. Dot indicator

10. Fit the lock retaining nut and tighten to **4 Nm**.
11. Insert the key and turn it clockwise to the unlock position.
12. Fit the windshield to the motorcycle as described in the Owner's Handbook.
13. Turn the key anti-clockwise into the locked position and remove the key. The key must be removed before checking the lock operation as it will only lock once the key has been removed.

- 
14. Check that the windshield is locked securely. Note some movement of the windshield release levers will be possible, but not sufficient to release the windshield.



### Warning

If, after fitment of this accessory kit, you have any doubt about the performance of any aspect of the motorcycle, contact an authorised Triumph dealer and do not ride the motorcycle until the authorised dealer has declared it fit for use. Riding a motorcycle when there is any doubt as to any aspect of the performance of the motorcycle may result in loss of control of the motorcycle leading to an accident.



### Warning

Never ride an accessory equipped motorcycle at speeds above 80 mph (130 km/h).

The presence of accessories will cause changes in the stability and handling of the motorcycle. Failure to allow for changes in motorcycle stability may lead to loss of control or an accident.

Remember that the 80 mph (130 km/h) limit will be reduced by the fitting of non-approved accessories, incorrect loading, worn tyres, overall motorcycle condition and poor road or weather conditions.



### Warning

The motorcycle must not be operated above the legal road speed limit except in closed course conditions.



### Warning

Only operate this Triumph motorcycle at high speed in closed course, on-road competition or on closed course racetracks. High speed operation should only be attempted by riders who have been instructed in the techniques necessary for high speed riding and are familiar with the motorcycle's characteristics in all conditions.

High speed operation in any other circumstances is dangerous and will lead to loss of motorcycle control and an accident.