

Fitting Instructions: Rocket III
A9938019 - Analogue Clock Kit & A9938048 - Fuel Gauge Kit

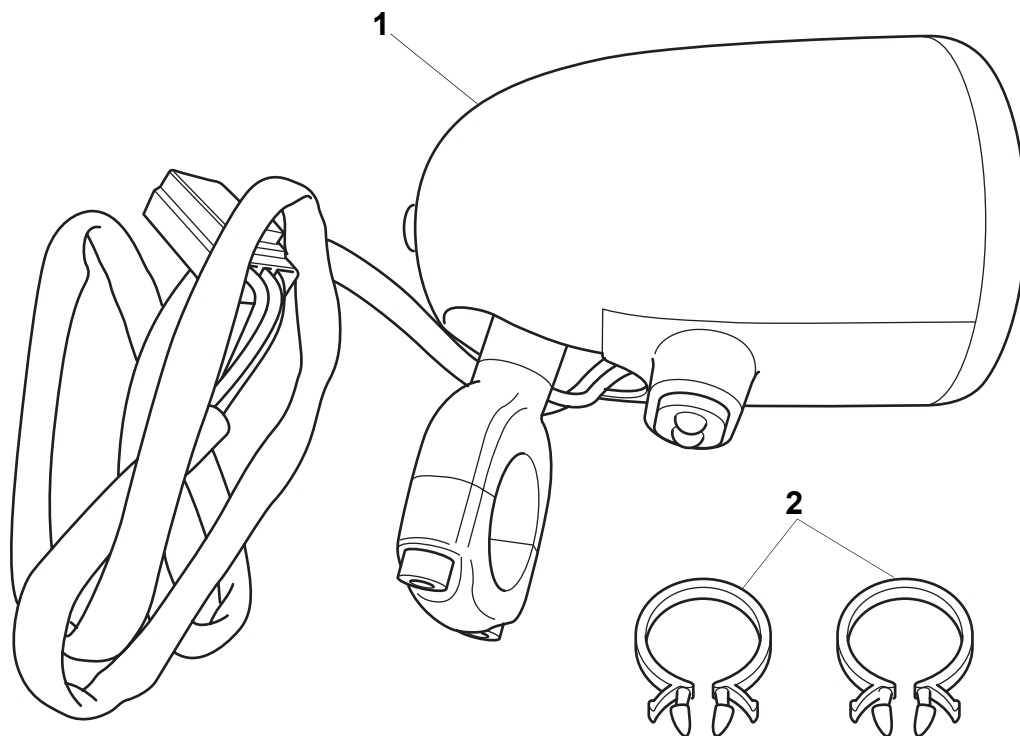


Warning

Always have Triumph approved parts, accessories and conversions fitted by a trained technician of an authorised Triumph Dealer. The fitment of parts, accessories and conversions by a technician who is not of an authorised Triumph dealer may affect the handling, stability or other aspects of the motorcycles operation which may result in an accident causing injury or death.

Warning

The analogue clock kit and the fuel gauge kit are designed for use on Triumph motorcycles only and should not be fitted to any other Triumph model or to any other manufacturers motorcycle. Fitting these kits to any other Triumph model or to any other manufacturers motorcycle, may interfere with the rider and could affect the stability and handling of the motorcycle leading to an accident causing injury or death.



cchs

Parts Supplied: A9938019

- 1. Analogue Clock Unit..... 1 off
- 2. Cable Clip 2 off

Parts Supplied: A9938048

- 1. Fuel Gauge Unit1 off
- 2. Cable Clip2 off

Fitting Instructions: Rocket III

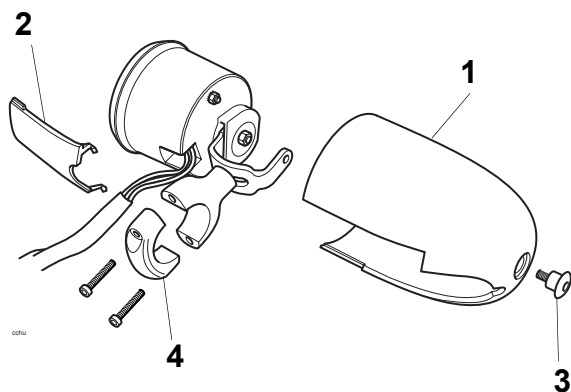
A9938019 - Analogue Clock Kit & A9938048 - Fuel Gauge Kit



NOTE

- The following instructions describe the correct fitment of either instrument unit.
- The instruments may be fitted to either side of the handlebar, according to rider preference.

1. Position the motorcycle on a paddock stand.
2. Remove the rider's seat.
3. Disconnect the battery, negative (black) lead first.
4. Remove the screw from the rear of the instrument unit.
5. Remove the outer covers as shown in the diagram below.



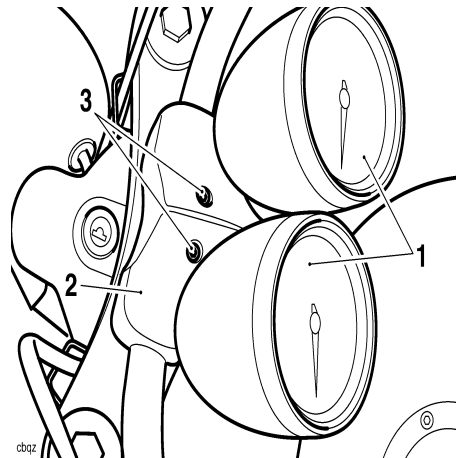
1. Outer cover (upper).
2. Outer cover (lower).
3. Retaining screw.
4. Clamp lower.

NOTE

- The lower cover fitted to the clock cannot be completely removed and so requires support to prevent damage to internal wiring.

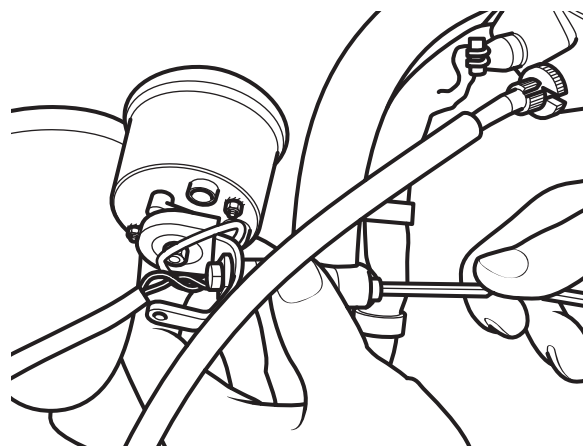
6. Separate the two halves of the instrument clamp.

7. Release the two fixings securing the main instrument pack to the handlebar clamp cover.



1. Main instrument pack.
2. Handlebar clamp cover.
3. Fixings.

8. Locate the instrument unit on the desired side of the handlebar, in a position that allows the main motorcycle instrument pack to be rotated forward and back.



Temporary position.

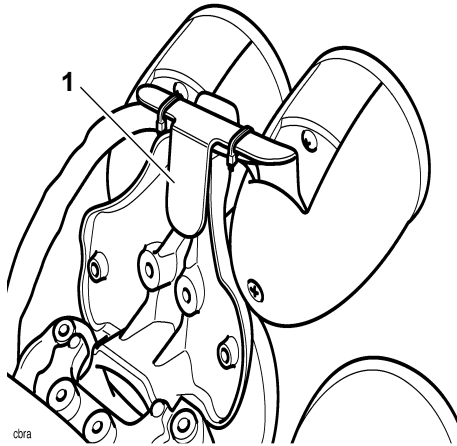
9. Refit fuel gauge/clock lower clamp and lightly secure the unit in this position.

Fitting Instructions: Rocket III

A9938019 - Analogue Clock Kit & A9938048 - Fuel Gauge Kit

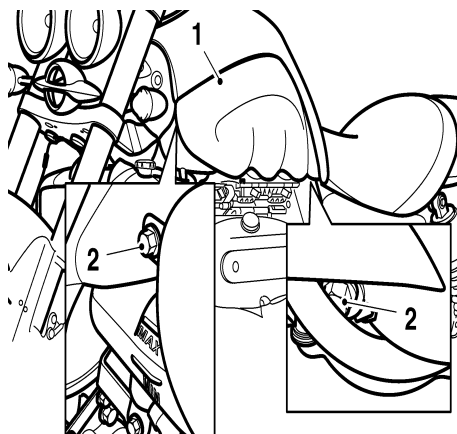


10. Tilt the main instrument pack forward.



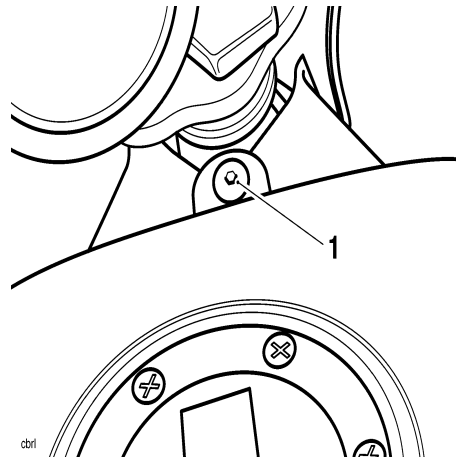
1. Main instrument pack.

11. Remove the intake cover from the left hand side of the fuel tank as follows; release the two screws from its front and rear edges and then slide it downwards to release it from two support studs in its centre.



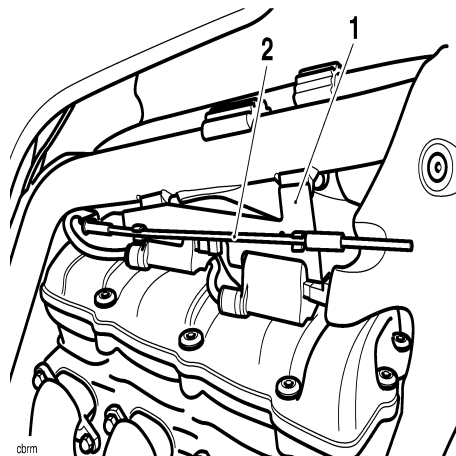
1. Intake cover.
2. Intake cover screws.

12. Release the single fixing from the front of the fuel tank.



1. Fixing.

13. Pivot the fuel tank upwards, support the tank while detaching the tank prop from the clips on the outside of the coil bracket.

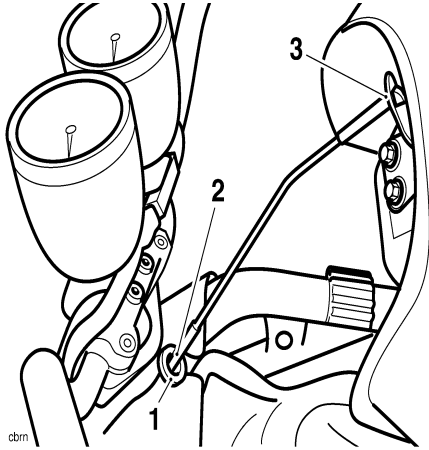


1. Coil bracket.
2. Fuel tank prop.

Fitting Instructions: Rocket III
A9938019 - Analogue Clock Kit & A9938048 - Fuel Gauge Kit

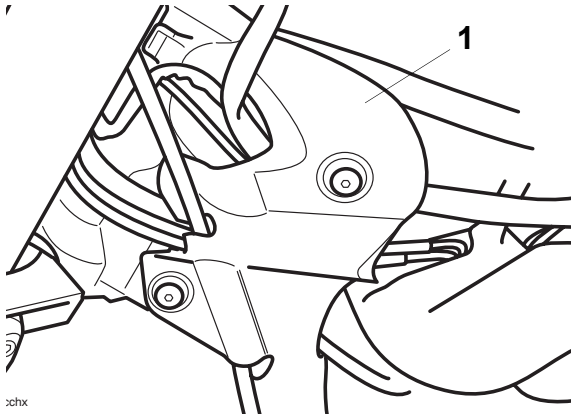


14. Locate the plain end of the prop in the fuel tank fixing hole and the spherical end of the prop in the fixing bracket on the tank.



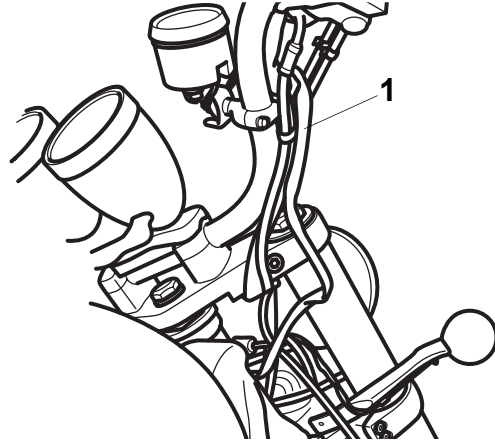
- 1. Fuel tank fixing hole.**
2. Prop - plain end.
3. Prop - spherical end.

15. Remove the two screws securing the left hand infill panel to the frame.



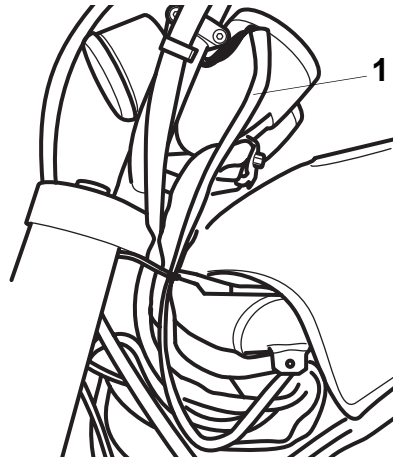
- 1. Left hand infill panel.**

16. For fitment to the right hand side of the handlebar, route the instrument unit wiring alongside the right hand switch cube wiring, in front of the headstock and into the area behind the headstock.



- 1. Wiring route for fitment to the right hand side of the handlebar.**

17. For fitment to the left hand side of the handlebar, route the instrument unit wiring alongside the left hand switch cube wiring, through the left hand side of the frame into the area behind the headstock.



- 1. Wiring route for fitment to the left hand side of the handlebar.**

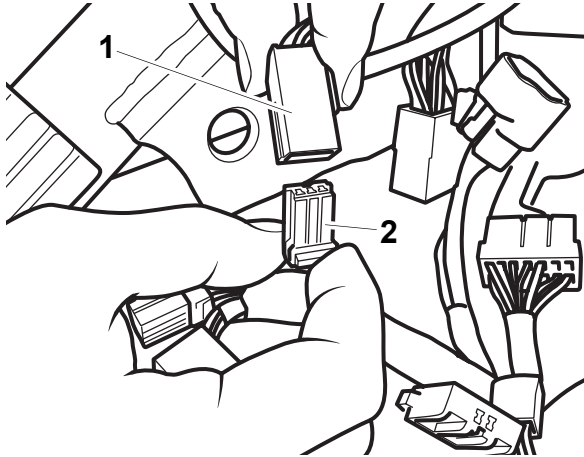
Fitting Instructions: Rocket III

A9938019 - Analogue Clock Kit & A9938048 - Fuel Gauge Kit



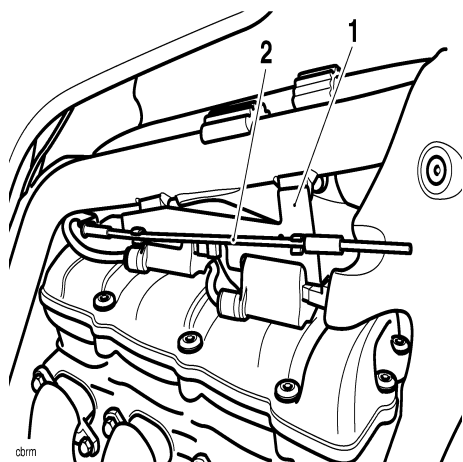
18. If fitting the fuel gauge:
Fasten the fuel gauge wiring connector to the 4-pin connector marked with blue tape.

If fitting the analogue clock:
Fasten the analogue clock wiring connector to the 3-pin connector marked with blue tape.



1. Clock/Gauge wiring.
2. Wiring loom connector.

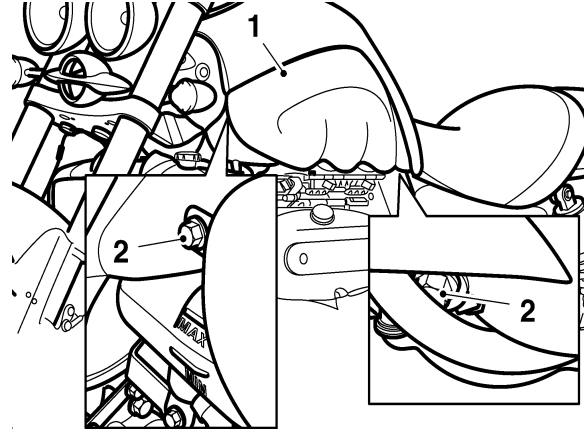
19. Replace the left hand infill panel and tighten the screws to **3 Nm**.
20. Support the fuel tank and remove the prop.
21. Continue to support the tank while refitting the prop to the two clips on the outside of the coil bracket.



1. Coil bracket.
2. Fuel tank prop.

22. Lower the tank into position and secure with the forward fixing. Tighten the fixing to **9 Nm**.

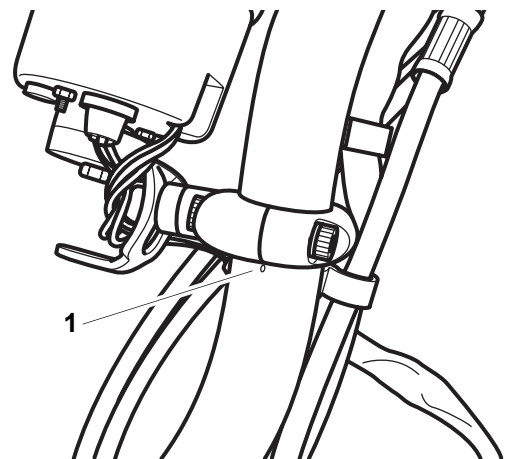
23. Refit the intake cover as follows; align the cover to the centre studs and ease it into place. Fit and tighten the two screws to **9 Nm**.



cbrb

1. Intake cover.
2. Intake cover screws.

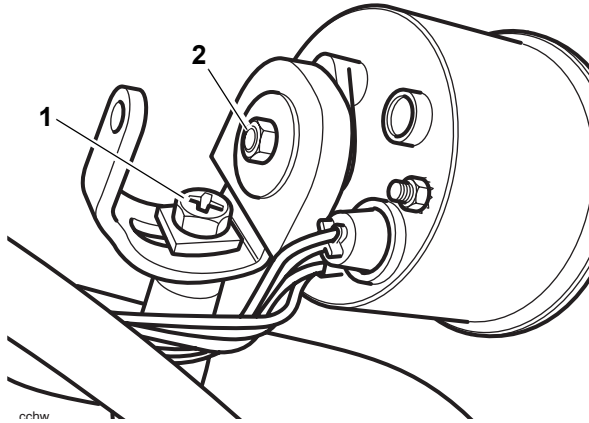
24. Pivot the main instrument pack into place. Fit the two screws and tighten to **3 Nm**.
25. Loosen the clamp securing the instrument unit to the handlebar.
26. Align the clamp to the dot mark on the handlebar as shown. Tighten the clamp bolts evenly to **3 Nm**.



ccic

1. Alignment mark on handlebar.

27. Loosen the alignment bolt (1) and adjust the clamping mechanism until the face of the instrument unit is parallel with the main instruments. Tighten the bolt to **6 Nm**.



- 1. Alignment bolt.**
2. Adjuster nut.

28. Loosen the adjuster nut (2) and rotate the instrument face until oriented as required. Tighten to **3 Nm**.
29. Replace the outer covers and tighten the securing screw.
30. Remove the cable clips securing the switch cube wiring to the handlebar.
31. Secure both the switch cube wiring and the instrument unit wiring to the handlebar with the clips provided in the fixing kit.
32. Reconnect the battery, positive (red) lead first.
33. Refit the riders seat and remove the paddock stand.

To set the analogue clock:

To adjust the analogue clock press one of the two buttons located on the underside of the clock housing.

By pressing and holding the left hand button the hands on the clock are moved forward. By pressing and holding the right hand button the hands are moved backward.

When the hands of the clock show the desired time, release the button.