



Accessory Fitting Instructions

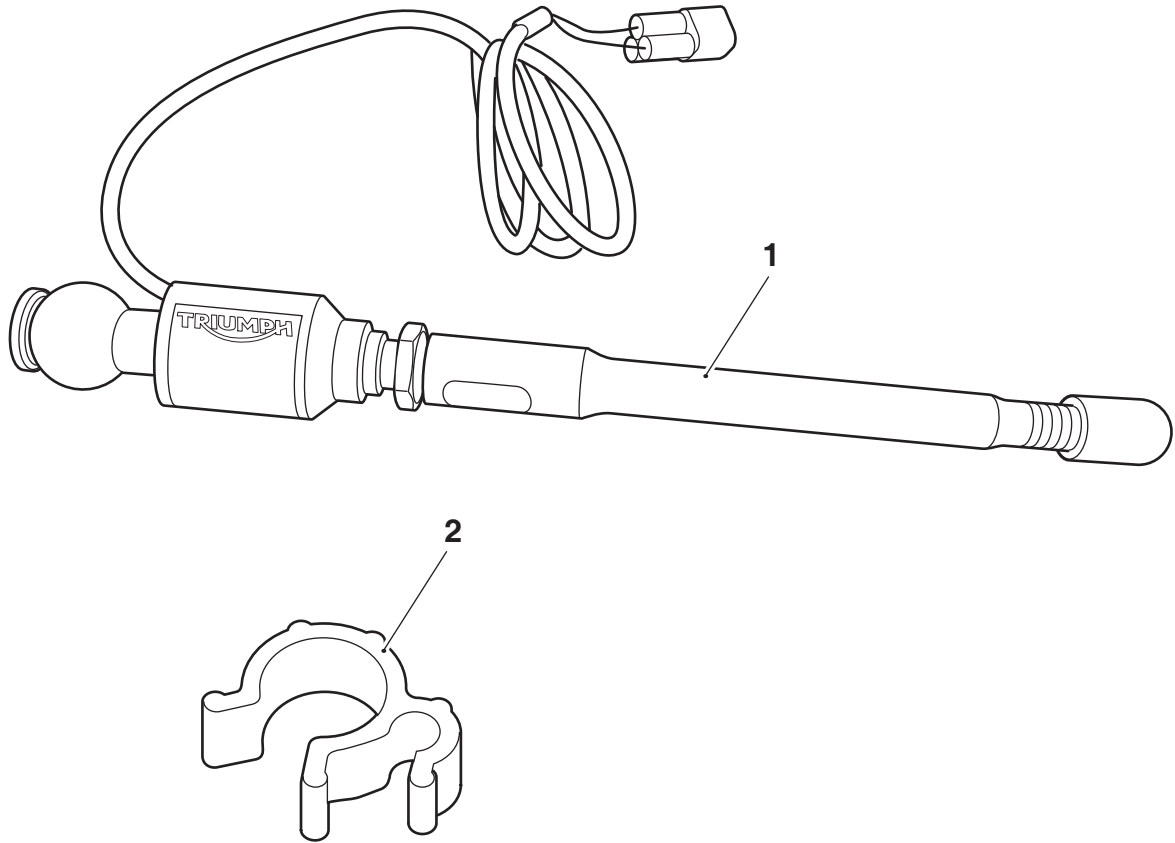
Quickshifter Kit	
Kit Number	Models Affected
A9930428	Speed Triple S up to VIN 867684, Speed Triple R from VIN 735337
Triumph Shift Assist (TSA) Kit	
Kit Number	Models Affected
A9930469	Speed Triple S from VIN 867685, Speed Triple RS
A9770220	Speed Triple S from VIN 867685 to VIN 975442, Speed Triple RS up to VIN 975442
A9778550	Speed Triple S from VIN 975443, Speed Triple RS from VIN 975443
A9770425	Speed Triple S from VIN 867685 to VIN 975442, Speed Triple RS up to VIN 975442

Thank you for choosing this Triumph genuine accessory kit. This accessory kit is the product of Triumph's use of proven engineering, exhaustive testing, and continuous striving for superior reliability, safety and performance.

Completely read all of these instructions before commencing the installation of the accessory kit in order to become thoroughly familiar with the kit's features and the installation process.

These instructions should be considered a permanent part of your accessory kit, and should remain with it even if your accessory equipped motorcycle is subsequently sold.

Parts Supplied



1. Quickshifter or TSA assembly	1 off	3. Gear pedal crank (A9770220 and A9770425 only, not shown)	1 off
2. Cable clip	1 off		

Warning

Fit only genuine Triumph accessories to those models approved by Triumph as listed in the associated Triumph fitting instructions. The accessory kits covered in this instruction are designed for use on specific models of Triumph motorcycle. The accessory kits and the models applicable are listed at the start of the instruction. They should never be fitted to any other Triumph model or to any other manufacturer's motorcycle. Fitting an accessory kit to a Triumph model not listed, or to any other manufacturer's motorcycle will affect the performance, stability and handling of the motorcycle. This may affect the rider's ability to control the motorcycle and could result in an accident causing severe injuries or death.

Warning

Always have Triumph approved parts, accessories and conversions fitted by a trained technician of an authorised Triumph dealer. The fitment of parts, accessories and conversions by a technician who is not of an authorised Triumph dealer may affect the handling, stability or other aspects of the motorcycle's operation which may result in loss of motorcycle control and an accident.

Warning

Throughout this operation, ensure that the motorcycle is stabilised and adequately supported to prevent risk of injury from the motorcycle falling.



Warning

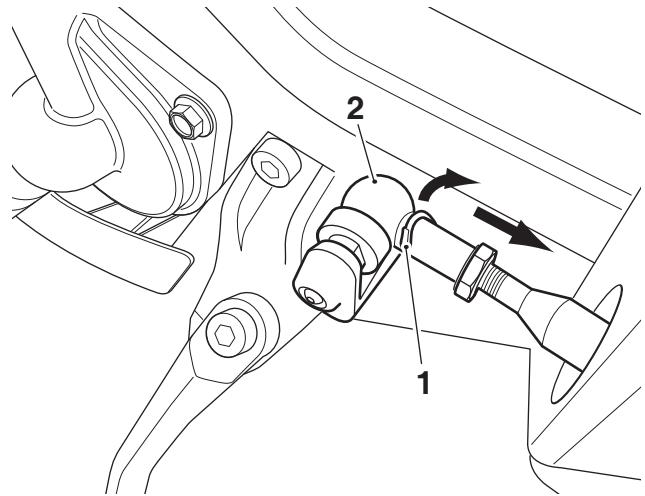
A torque wrench of known accurate calibration must be used when fitting this accessory kit. Failure to tighten any of the fasteners to the correct torque specification may affect motorcycle performance, handling and stability. This may result in loss of motorcycle control and an accident.

Note:

- **Triumph offers a broad range of approved genuine accessories for your motorcycle. We cannot therefore cover all possible equipment variations in these instructions. For removal and installation of Triumph Genuine Accessories, always refer to the instructions supplied with the respective accessory kit. To obtain additional copies of any Triumph accessory instructions, visit www.triumphinstructions.com or contact your authorised Triumph dealer.**

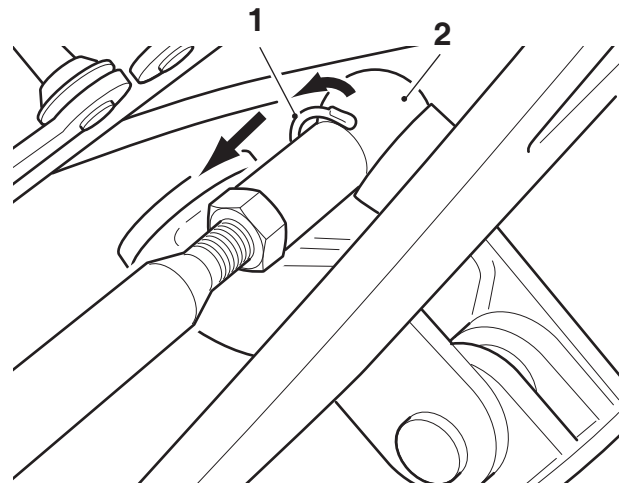
1. Remove the front panel from the fuel tank, as described in the Service Manual.
2. Disconnect the battery, negative (black) lead first.
3. Remove the seat, as described in the Service Manual.
4. Remove the fuel tank, as described in the Service Manual.

5. Remove the wire clips retaining the original gear selector rod front and rear ball joints, as shown. Retain the wire clips for re-use.



FRONT

1. Wire clip
2. Ball joint



REAR

1. Wire clip
2. Ball joint

6. Remove the original gear selector rod from the motorcycle.

Accessory kit A9770220 and A9770425 only:

7. Remove and fit the new gear pedal crank as described in the Service Manual.

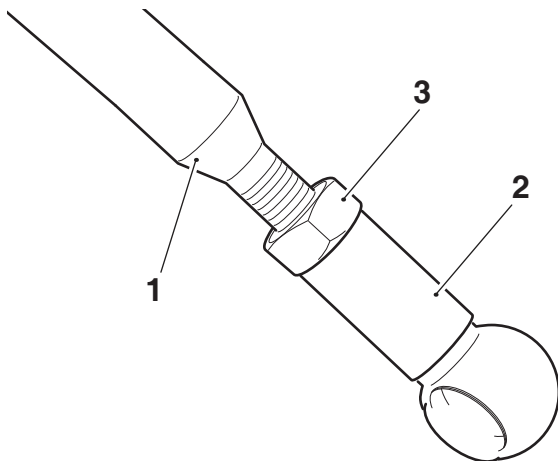
All models:



Caution

It may be difficult to remove the ball joint from the original gear selector rod. Do not use excessive force. If necessary, apply a releasing oil to the ball joint to aid removal.

8. Remove the rear ball joint and lock nut from the gear selector rod. Retain the lock nut and ball joint for re-use. Retain the gear selector rod if the motorcycle is to be returned to its original condition.
9. Remove the plastic end cap from the Quickshifter or TSA assembly selector rod.
10. Screw the original lock nut and ball joint, removed from the original gear selector rod, onto the Quickshifter or TSA assembly selector rod, as shown.



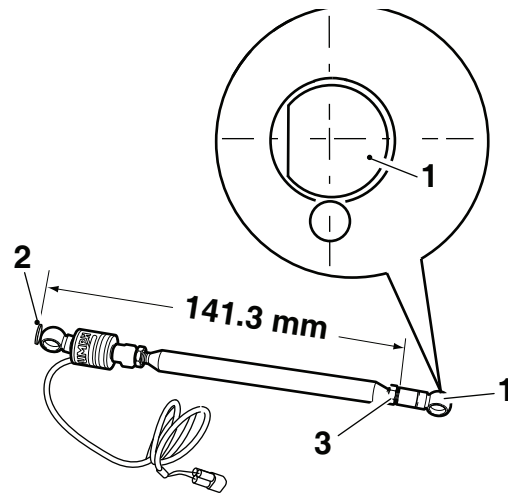
1. Quickshifter or TSA assembly selector rod
2. Ball joint, left hand thread
3. Lock nut, left hand thread

Note:

- The initial setting of the Quickshifter or TSA assembly is different for specific models. Follow the appropriate setting procedure below.

**Speed Triple S up to VIN 867684,
Speed Triple R from VIN 735337**

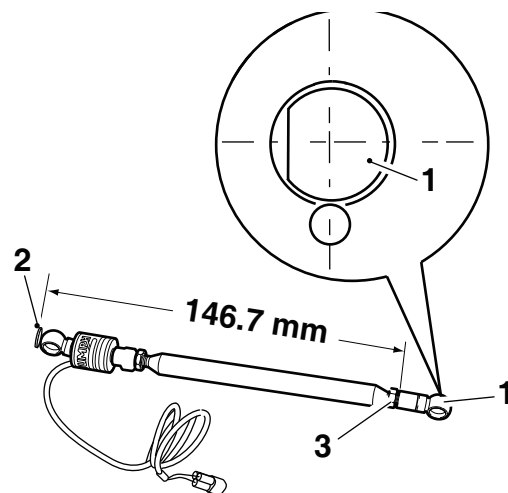
11. Adjust the position of the ball joint on the selector rod to 141.3 mm from the Quickshifter ball joint, ensuring the orientation of ball joints is the same, as shown below. Finger tighten the lock nut at this stage.



1. Ball joint, selector rod
2. Flat face, ball joint - Quickshifter sensor body
3. Lock nut

Speed Triple S from VIN 867685, Speed Triple RS

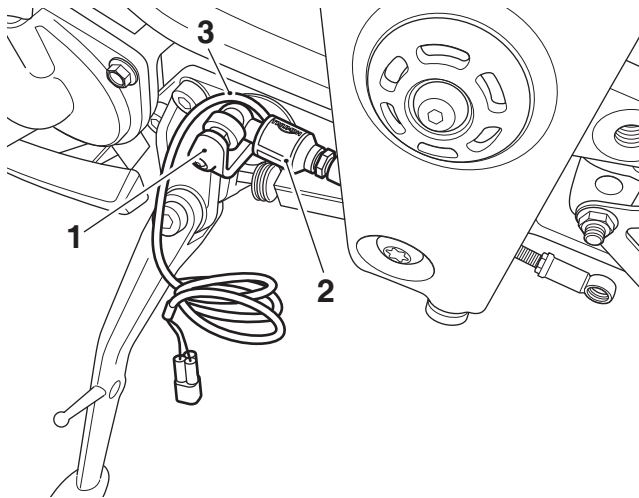
12. Tighten the TSA sensor half nut to **6 Nm**.
13. Adjust the position of the ball joint on the selector rod to 146.7 mm from the TSA ball joint, ensuring the orientation to the ball joints is the same, as shown below. Finger tighten the lock nut at this stage.



1. Ball joint, selector rod
2. Flat face, ball joint - TSA sensor body
3. Lock nut

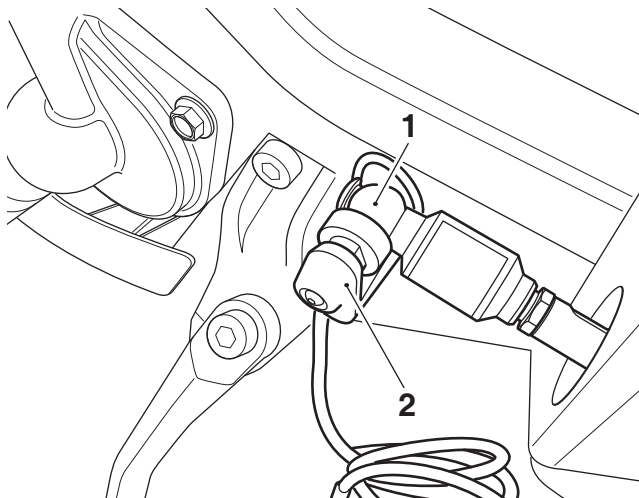
All Models

14. Locate the Quickshifter or TSA assembly in position through the frame with the sensor body at the front and the cable at the bottom. Route the cable up and over the gear pedal crank, as shown.



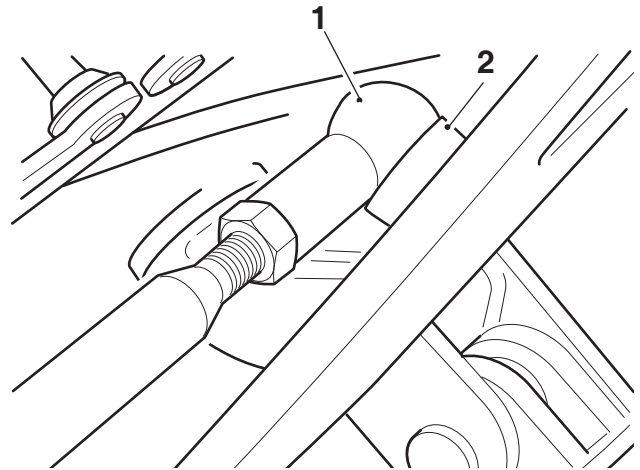
- 1. Gear pedal crank
- 2. Sensor body
- 3. Cable

15. Attach the Quickshifter or TSA ball joint to the gear pedal crank.



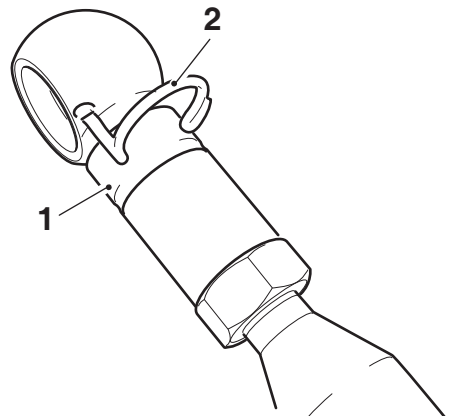
- 1. Quickshifter or TSA ball joint
- 2. Gear pedal crank

16. Attach the rear ball joint to the foot control.



- 1. Ball joint
- 2. Foot control

17. Refit the wire clips to retain the ball joints. Ensure the wire clips locate correctly in the ball joints, before rotating the clips to lock in place.



- 1. Ball joint
- 2. Wire clip

Speed Triple up to VIN 867684, Speed Triple R from VIN 735337

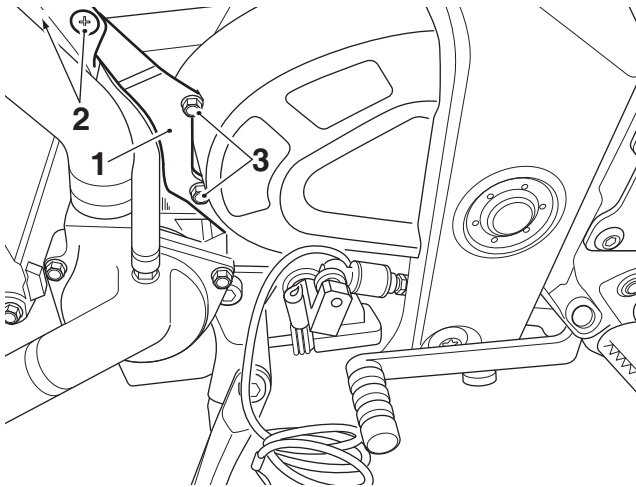
18. Tighten the lock nut against the ball joint on the rear of the Quickshifter assembly to **4 Nm**.

Speed Triple S from VIN 867685, Speed Triple RS

19. Tighten the lock nut against the ball joint on the rear of the TSA assembly to **6 Nm**.

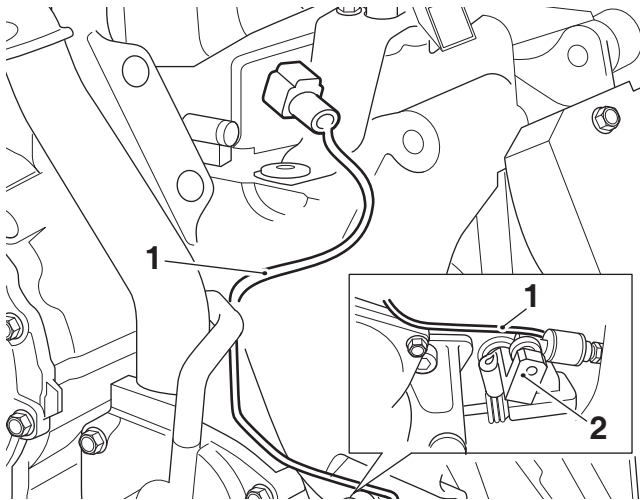
All Models

20. Remove the bracket from the left hand side of the motorcycle, as shown below. Retain the bracket, screws and plastic fixings for re-use.



1. Bracket
2. Plastic fixings
3. Screws

21. Route the Quickshifter or TSA cable over the gear pedal crank and up through the motorcycle frame to the area below the fuel tank, as shown below.



1. Quickshifter or TSA cable
2. Gear pedal crank

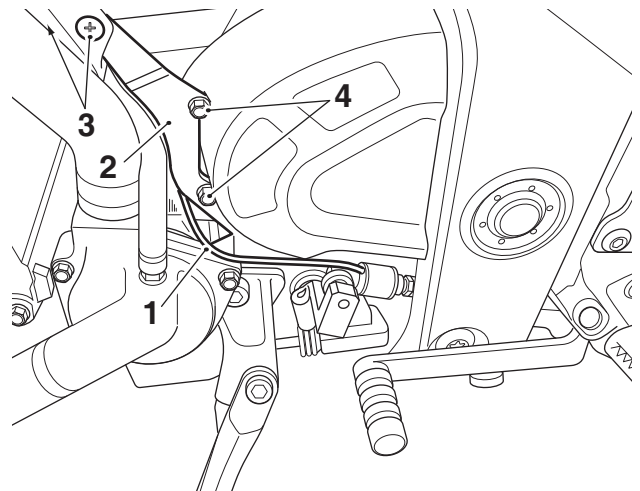


Caution

A wiring harness or cable which becomes trapped, kinked or pinched during installation, or general motorcycle operation, may result in wiring harness damage and electrical malfunctions.

22. Refit the bracket to the left hand side of the frame and secure with the original plastic fixings and screws. Do not fully tighten the screws at this stage.

23. Ensure the Quickshifter or TSA cable is not trapped or pinched between the bracket and motorcycle frame. Tighten the screws to **7 Nm**.

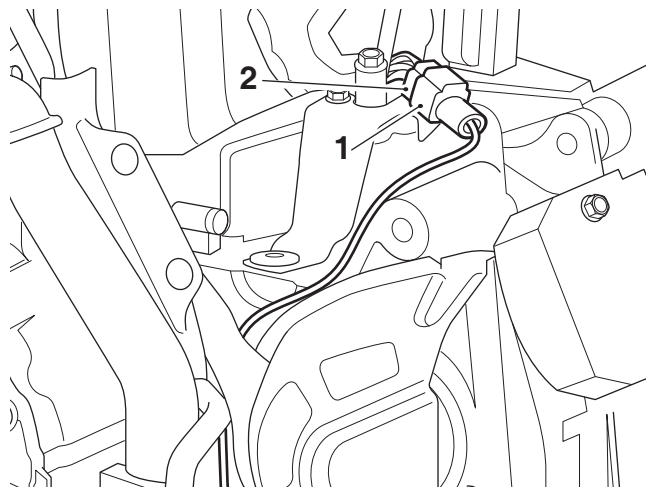


1. Quickshifter or TSA cable
2. Bracket
3. Plastic fixings
4. Screws

Note:

- The main harness connector for the Quickshifter or TSA is located in the area below the fuel tank.

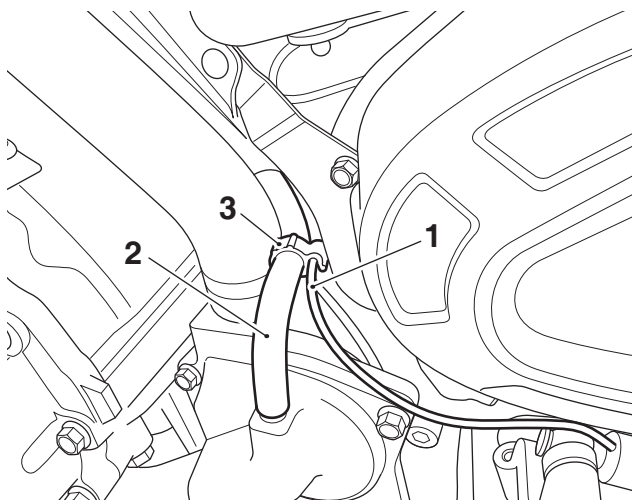
24. Remove the blanking plug from the main harness connector and plug in the Quickshifter or TSA connector.



1. Quickshifter or TSA connector
2. Main harness connector

25. Ensure there is not excessive Quickshifter or TSA cable extending to the outside of the motorcycle, any excess cable should be tucked into the area below the fuel tank.

26. Secure the Quickshifter or TSA cable to the water pump hose using the cable clip provided, as shown below.



1. Quickshifter or TSA cable
2. Water pump hose
3. Cable clip

27. Refit the fuel tank, as described in the Service Manual.
28. Refit the seat, as described in the Service Manual.
29. Reconnect the battery, positive (red) lead first and tighten the battery terminals to **4.5 Nm**.
30. Refit the front panel to the fuel tank, as described in the Service Manual.

Speed Triple S from VIN 867685, Speed Triple RS

Note:

- **The correct engine calibration must be downloaded to the motorcycle ECU prior to starting the engine. This information can be found on the 'Triumph Online' dealer web site.**
31. Connect the Triumph Diagnostic Tool and download the correct engine calibration with the TSA enabled to the ECU following the procedure on the 'Triumph Online' dealer web site.
 32. Fully shut down the motorcycle, then switch the ignition back on.
 33. Enable the TSA on the instrument panel, as described in the Owner's Manual.
 34. Ride the motorcycle for 10 seconds in each gear. The instruments will display a 'Transmission Warning' message until the gear positions are adapted.

All Models

Note:

- **If it is necessary to adjust the gear pedal angle at any point after fitting the Quickshifter or TSA, follow the steps below.**
35. Remove the front panel from the fuel tank, as described in the Service Manual.
 36. Disconnect the battery, negative (black) lead first.
 37. Loosen rear ball joint lock nut on the Quickshifter or TSA assembly.
 38. Loosen the half nut between the Quickshifter or TSA sensor and rod.
 39. Turn the Quickshifter or TSA rod to achieve the desired pedal angle. Note, the number of visible threads must be less than 3.5 at the rear ball joint and less than 2.7 in the sensor to rod thread.

Speed Triple S up to VIN 867684, Speed Triple R from VIN 735337

40. Tighten the Quickshifter sensor half nut to **4 Nm**.
41. Repeat steps 18, 29 and 30.

Speed Triple S from VIN 867685, Speed Triple RS

42. Repeat steps 12, 19, 29 and 30.

Operational Instructions:



Caution

In the event of a Quickshifter or TSA system fault when riding, the system will be disabled.

Use the clutch to change gears in the normal way otherwise damage to the engine or gear box may occur.

Contact a Triumph dealer as soon as possible to have the fault checked and rectified.



Caution

Changing gears must be completed with a quick and forceful pedal movement, making sure that the pedal moves through its full range of travel.

Always take care when changing gears. After a gear change, the pedal must be fully released before another gear change can be made.

Incorrect gear changes can cause damage to the engine and transmission.

The Quickshifter or TSA system adjusts the engine torque to allow gears to engage, without closure of the throttle twist grip or operation of the clutch.

The Quickshifter or TSA system is not an automatic system for changing gears. Gears must be selected and changed in the normal way using the gear pedal as described in the Changing Gears section in the Owner's Handbook.

The Quickshifter or TSA system works for shifts of gear. The clutch must be used for stopping and pulling away. The clutch must be used when selecting any gear from neutral, and also when selecting neutral from any other gear.

Accessory Kit A9930428

The Quickshifter will only operate for up-changes, the clutch must be used for down-changes.

The Quickshifter will not operate if:

- The clutch is applied.
- An up-shift is attempted by mistake when in 6th gear.
- An up-shift is attempted at very low engine speed.

Accessory Kits A9930469, A9770220, A9778550, A9770425

TSA will operate for up and down-changes.

TSA will not operate if:

- The clutch is applied.
- An up shift is attempted by mistake when in 6th gear.
- A down shift is attempted by mistake when in 1st gear.
- An up shift is attempted at very low engine speeds.
- A down shift is attempted at very high engine speeds.
- An up shift is attempted during overrun.
- The vehicle speed limiter is active.
- Cruise control is active.
- Traction control is operating.
- If the previous gear has not fully engaged.
- The throttle is changed during a shift.

All Kits

If the Quickshifter or TSA system does not operate, the clutch can be used to change gears in the normal way.

For more information on enabling and disabling the Quickshifter or Triumph Shift Assist (TSA) functionality, see the Owner's Handbook



Warning

If, after fitting this accessory kit, you have any doubt about the performance of any aspect of the motorcycle, contact an authorised Triumph dealer and do not ride the motorcycle until the authorised dealer has declared it fit for use. Riding a motorcycle when there is any doubt as to any aspect of the performance of the motorcycle may result in loss of control of the motorcycle leading to an accident.



Warning

Never ride an accessory-equipped motorcycle at speeds above 80 mph (130 km/h).

The presence of accessories will cause changes in the stability and handling of the motorcycle. Failure to allow for changes in motorcycle stability may lead to loss of control or an accident.

Remember that the 80 mph (130 km/h) limit will be reduced by the fitting of non-approved accessories, incorrect loading, worn tyres, overall motorcycle condition and poor road or weather conditions.



Warning

The motorcycle must not be operated above the legal road speed limit except in closed-course conditions.



Warning

Only operate this Triumph motorcycle at high speed in closed-course, on-road competition or on closed-course racetracks. High-speed operation should only be attempted by riders who have been instructed in the techniques necessary for high-speed riding and are familiar with the motorcycle's characteristics in all conditions.

High-speed operation in any other circumstances is dangerous and will lead to loss of motorcycle control and an accident.