



Accessory Fitting Instructions

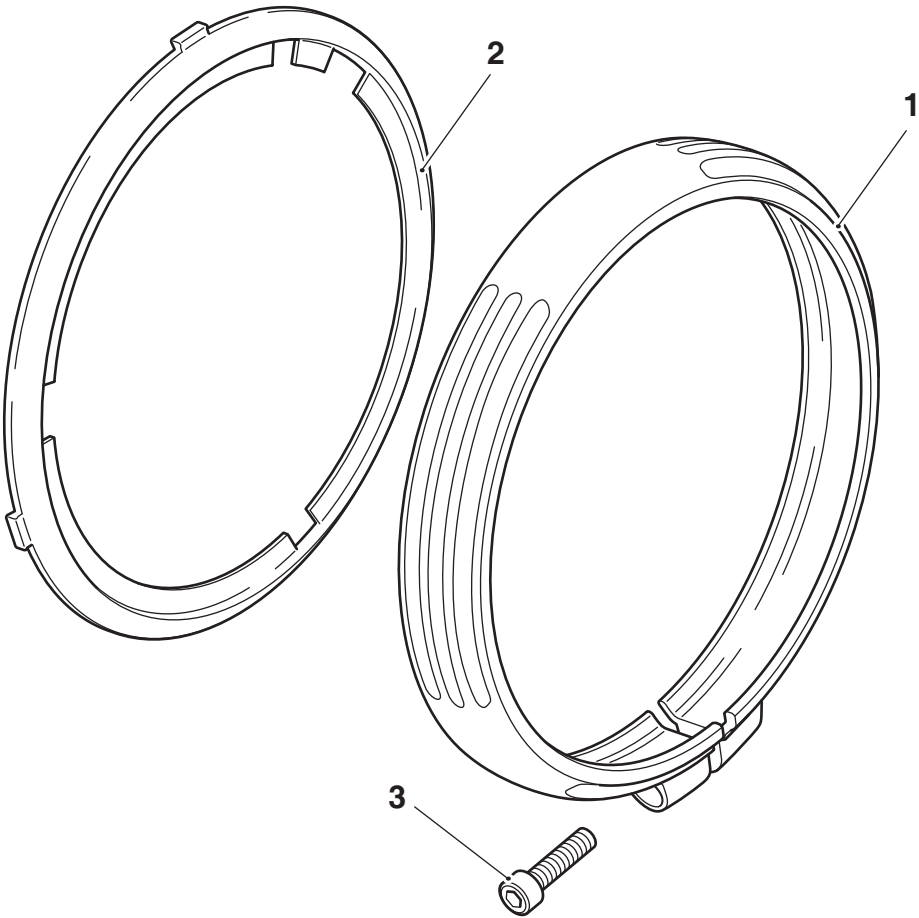
Headlight Bezel Kit - Machined	
Kit Number	Models Affected
A9838243	Bonneville Bobber, Bonneville Bobber Black, Bonneville Bobber TFC

Thank you for choosing this Triumph genuine accessory kit. This accessory kit is the product of Triumph's use of proven engineering, exhaustive testing, and continuous striving for superior reliability, safety and performance.

Completely read all of these instructions before commencing the installation of the accessory kit in order to become thoroughly familiar with the kit's features and the installation process.

These instructions should be considered a permanent part of your accessory kit, and should remain with it even if your accessory equipped motorcycle is subsequently sold.

Parts Supplied



1. Headlight bezel	1 off	3. Fixing, M5 x 16 mm	1 off
2. Support ring	1 off		



Warning

The accessory kits covered in this instruction are designed for use on specific models of Triumph motorcycle. The accessory kits and the models applicable are listed at the start of the instruction. They should not be fitted to any other Triumph model or to any other manufacturer's motorcycle. Fitting an accessory kit to a Triumph model not listed, or to any other manufacturer's motorcycle will affect the performance, stability and handling of the motorcycle. This may result in loss of motorcycle control and an accident.



Warning

Always have Triumph approved parts, accessories and conversions fitted by a trained technician of an authorised Triumph dealer. The fitment of parts, accessories and conversions by a technician who is not of an authorised Triumph dealer may affect the handling, stability or other aspects of the motorcycle's operation which may result in loss of motorcycle control and an accident.



Warning

Throughout this operation, ensure that the motorcycle is stabilised and adequately supported to prevent risk of injury from the motorcycle falling.



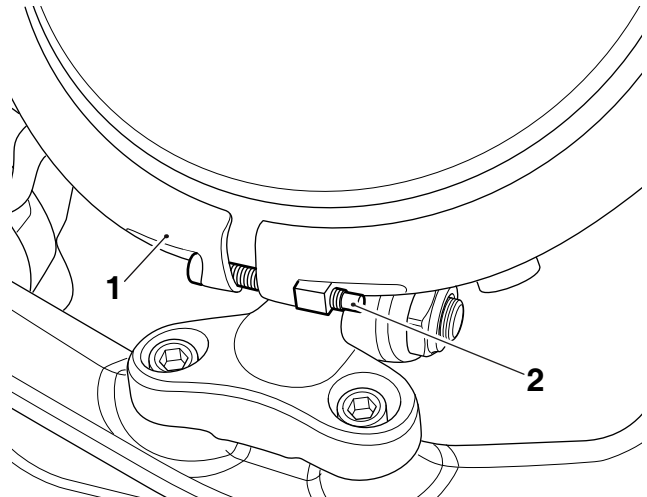
Warning

A torque wrench of known accurate calibration must be used when fitting this accessory kit. Failure to tighten any of the fasteners to the correct torque specification may affect motorcycle performance, handling and stability. This may result in loss of motorcycle control and an accident.

Note:

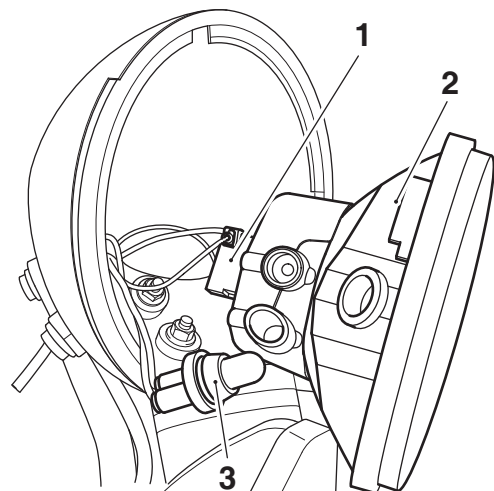
- Triumph offers a broad range of approved genuine accessories for your motorcycle. We cannot therefore cover all possible equipment variations in these instructions. For removal and installation of Triumph Genuine Accessories, always refer to the instructions supplied with the respective accessory kit. To obtain additional copies of any Triumph accessory instructions, visit www.triumphinstructions.com or contact your authorised Triumph dealer.

1. Disconnect the battery, negative (black) lead first.
2. Remove the headlight bezel fixing and while supporting the headlight, remove the headlight bezel from the headlight bowl. Retain the headlight bezel and fixing for reuse if the motorcycle is to be returned to its original condition.



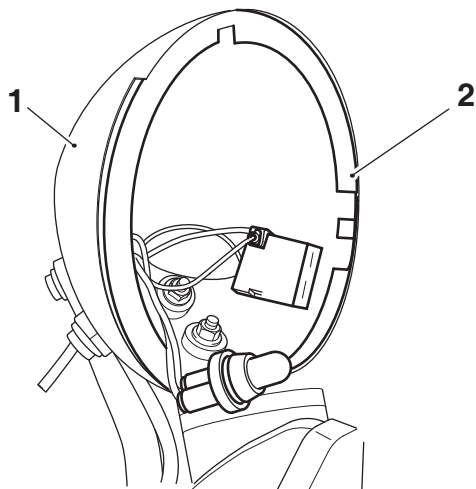
1. Headlight bezel
2. Fixing

3. Disconnect the headlight electrical connector from the headlight bulb and carefully remove the position light from the headlight. Note the position of the headlight electrical connector and position light to aid reassembly. Remove the headlight from the headlight bowl, retain the headlight for reuse.



1. Headlight electrical connector
2. Headlight
3. Position light

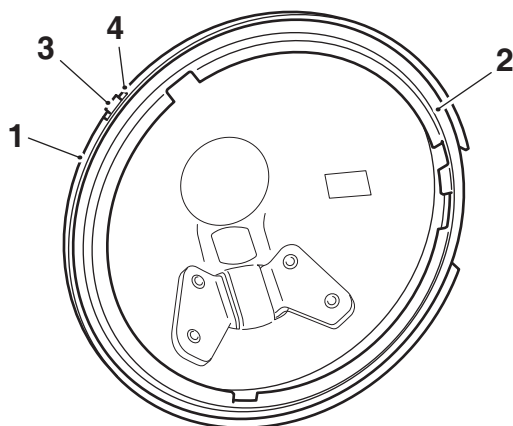
4. Remove the support ring from the headlight bowl. Retain the support ring for reuse if the motorcycle is to be returned to its original condition.



1. Headlight bowl

2. Support ring

5. Fit the new support ring from the kit in the orientation shown. Ensure the location tangs on the support ring locate correctly in the slots provided in the headlight bowl.



1. Headlight bowl

2. Support ring

3. Location tangs (top right hand shown)

4. Slots (top right hand shown)

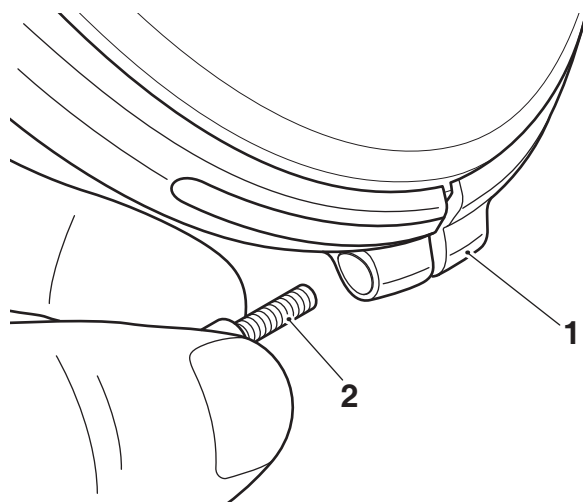
6. Connect the headlight electrical connector to the headlight bulb and carefully fit the position light into the headlight, as noted at step 3.



Caution

Care should be taken when fitting the headlight bezel onto the headlight bowl to ensure damage to the headlight bezel or headlight bowl paintwork is avoided.

7. While supporting the headlight in the headlight bowl, fit the headlight bezel from the kit on to the headlight bowl. Position the headlight bezel on the headlight bowl with the bezel clamp at the bottom of the headlight bowl. Fit the M5 x 16 mm fixing from the kit and tighten the fixing to **2 Nm**.



1. Headlight bezel

2. Fixing, M5 x 16 mm

8. Reconnect the battery, positive (red) lead first and tighten the battery terminals to **4.5 Nm**.
9. Check the position light and headlight function correctly and the alignment of the headlight has not been disturbed during the fitment of the headlight bezel. If necessary adjust the alignment of the headlight as described in the Service Manual.



Warning

If, after fitting this accessory kit, you have any doubt about the performance of any aspect of the motorcycle, contact an authorised Triumph dealer and do not ride the motorcycle until the authorised dealer has declared it fit for use. Riding a motorcycle when there is any doubt as to any aspect of the performance of the motorcycle may result in loss of motorcycle control and an accident.



Warning

Never ride an accessory-equipped motorcycle at speeds above 80 mph (130 km/h).

The presence of accessories will cause changes in the stability and handling of the motorcycle. Failure to allow for changes in motorcycle stability may result in loss of motorcycle control and an accident.

Remember that the 80 mph (130 km/h) limit will be reduced by the fitting of non-approved accessories, incorrect loading, worn tyres, overall motorcycle condition and poor road or weather conditions.



Warning

The motorcycle must not be operated above the legal road speed limit except in closed-course conditions.



Warning

Only operate this Triumph motorcycle at high speed in closed-course, on-road competition or on closed-course racetracks. High-speed operation should only be attempted by riders who have been instructed in the techniques necessary for high-speed riding and are familiar with the motorcycle's characteristics in all conditions.

High-speed operation in any other circumstances is dangerous and may result in loss of motorcycle control and an accident.