



Accessory Fitting Instructions

Multi-Function Light Installation Kit	
Kit Number	Models Affected
A9838081	Speed Twin up to VIN AE3665 with Euro 4 engine ECM (see below), Thruxton TFC, Thruxton RS
A9838101	Speed Twin from VIN AE2311 with Euro 5 engine ECM (see below)
Multi-Function Light Kit	
Kit Number	Models Affected
A9830140	Speed Twin, Thruxton TFC, Thruxton RS

Note:

- The installation of the accessory kits listed above is only legal for road use in regions which accept European type approval and should not be used for any other region.
- The Multi-Function Light Installation Kit and Multi-Function Light Kit listed above must be fitted with front LED indicators A9838023, A9838041 or A9838048. Failure to do so will render the motorcycle illegal for road use.

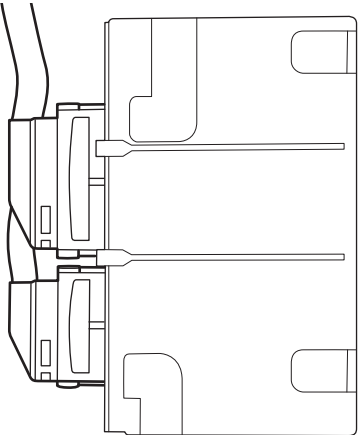
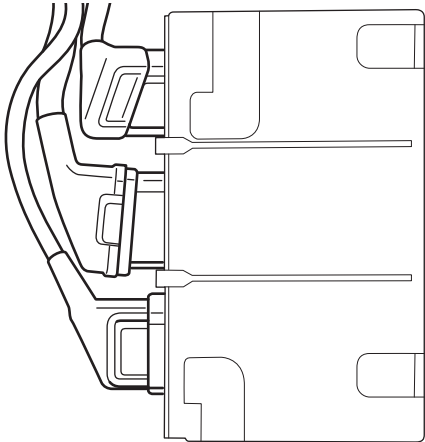
Thank you for choosing this Triumph genuine accessory kit. This accessory kit is the product of Triumph's use of proven engineering, exhaustive testing, and continuous striving for superior reliability, safety and performance.

Completely read all of these instructions before commencing the installation of the accessory kit in order to become thoroughly familiar with the kit's features and the installation process.

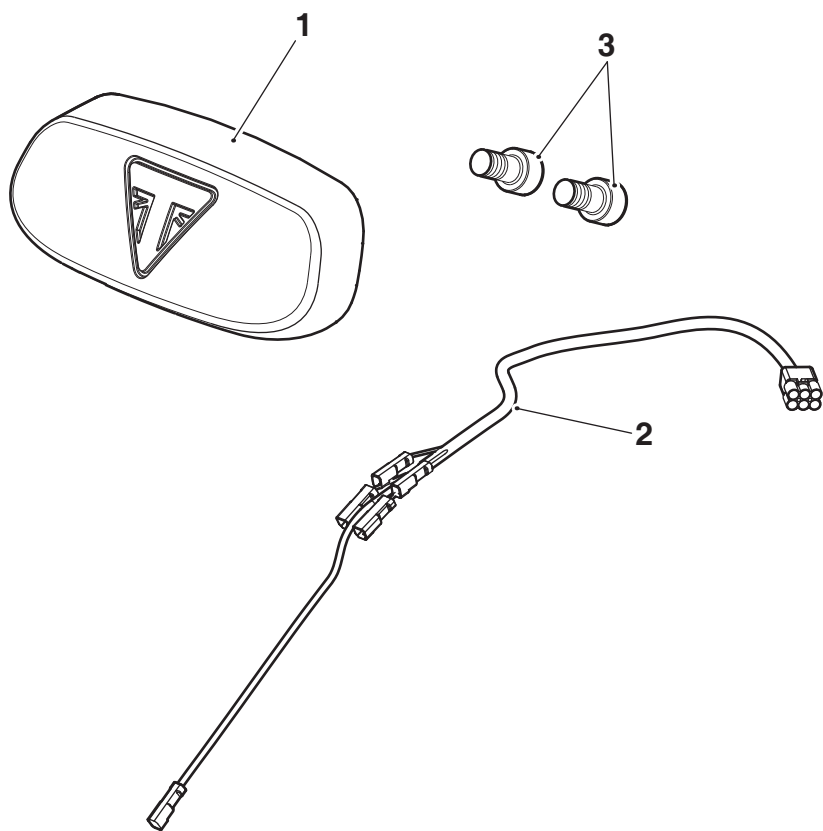
These instructions should be considered a permanent part of your accessory kit, and should remain with it even if your accessory equipped motorcycle is subsequently sold.

Note:

- The engine ECM is located under the seat.

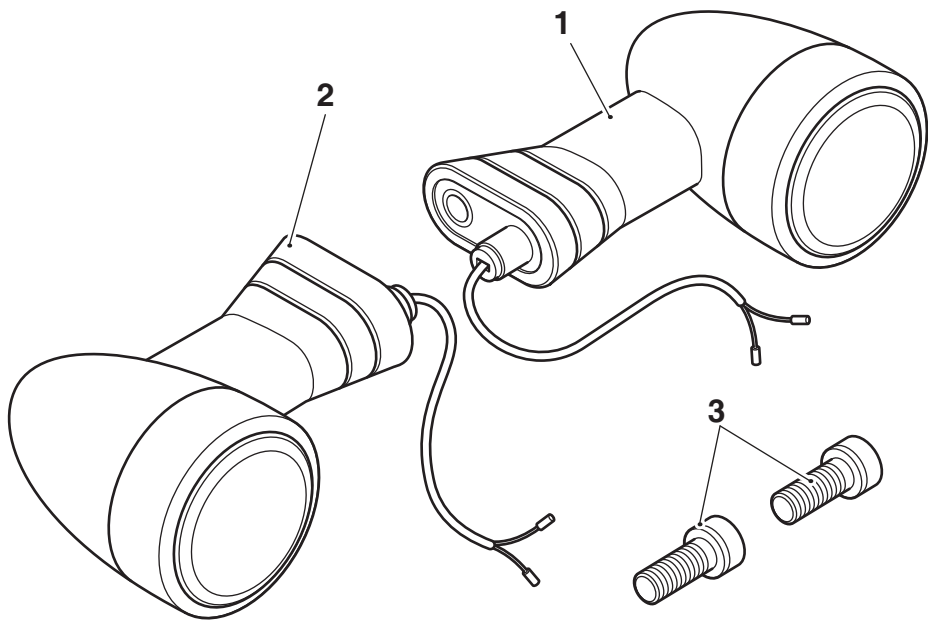
Engine ECM Identification	
Euro 4 ECM	Euro 5 ECM
	
Two connectors	Three connectors

Parts Supplied: A9838081, A9838101



1. Finisher	1 off	3. Fixing, M6 x 12 mm	2 off
2. Multi-function harness	1 off		

Parts Supplied: A9830140



1. Multi-function light, left hand	1 off	3. Fixing, M6 x 12 mm (encapsulated)	2 off
2. Multi-function light, right hand	1 off		



Warning

Fit only genuine Triumph accessories to those models approved by Triumph as listed in the associated Triumph fitting instructions. The accessory kits covered in this instruction are designed for use on specific models of Triumph motorcycle. The accessory kits and the models applicable are listed at the start of the instruction. They should never be fitted to any other Triumph model or to any other manufacturer's motorcycle. Fitting an accessory kit to a Triumph model not listed, or to any other manufacturer's motorcycle will affect the performance, stability and handling of the motorcycle. This may affect the rider's ability to control the motorcycle and could result in an accident causing severe injuries or death.



Warning

Always have Triumph approved parts, accessories and conversions fitted by a trained technician of an authorised Triumph dealer. The fitment of parts, accessories and conversions by a technician who is not of an authorised Triumph dealer may affect the handling, stability or other aspects of the motorcycle's operation which may result in loss of motorcycle control and an accident.



Warning

Make sure the motorcycle is supported. A correctly supported motorcycle will help prevent it from falling. An unstable motorcycle may fall, causing injury to the operator or damage to the motorcycle.



Warning

A torque wrench of known accurate calibration must be used when fitting this accessory kit. Failure to tighten any of the fasteners to the correct torque specification may affect motorcycle performance, handling and stability. This may result in loss of motorcycle control and an accident.

Note:

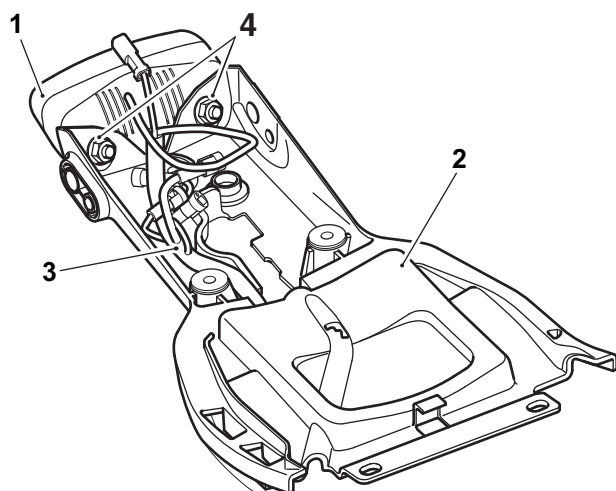
- Triumph offers a broad range of approved genuine accessories for your motorcycle. We cannot therefore cover all possible equipment variations in these instructions. For removal and installation of Triumph Genuine Accessories, always refer to the instructions supplied with the respective accessory kit. To obtain additional copies of any Triumph accessory instructions, visit www.triumphinstructions.com or contact your authorised Triumph dealer.

Notice

The installation of the accessory kits listed above is only legal for road use in countries which accept European type approval. In some countries, use of a motorcycle fitted with these accessory kits on public roads may render the user liable to prosecution. In these countries the use of a motorcycle fitted with this accessory kit on public roads is at the owner's risk.

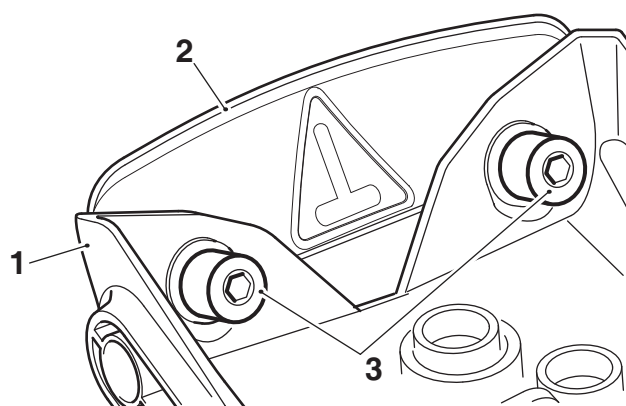
1. Remove the seat as described in the Service Manual.
2. Disconnect and remove the battery as described in the Service Manual.
3. Disconnect the rear light harness connector from the main wiring harness, as described in the Service Manual.
4. Remove the rear mudguard assembly as described in the Service Manual.
5. Remove the rear indicators as described in the Service Manual. Retain the indicators for reuse if the motorcycle is to be returned to its original condition. Discard the fixings.

6. Remove the two lock nuts from the rear light and remove the rear light from the ECM tray, noting the routing of the sub-harness for reassembly. Retain the rear light for reuse if the motorcycle is to be returned to its original condition. Discard the lock nuts.



1. Rear light
2. ECM tray
3. Rear light harness
4. Lock nuts

7. Fit the finisher from the kit to the ECM tray and secure with the M6 x 12 mm fixings. Tighten the fixings to **5 Nm**.



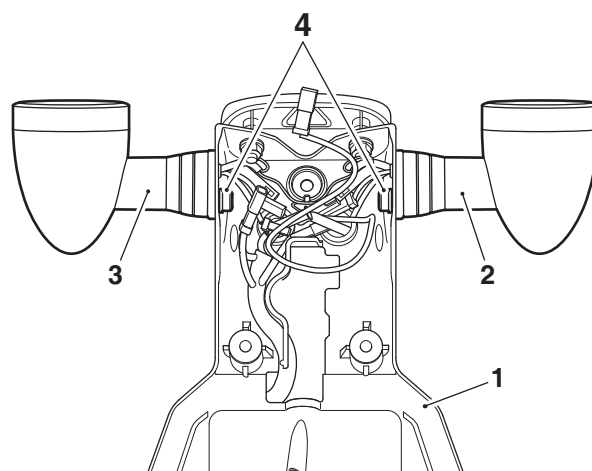
1. ECM tray
2. Finisher
3. Fixings, M6 x 12 mm

8. Collect the multi-function lights from accessory kit A9838140.

Note:

- The multi-function light which has red tape attached to it should be fitted to the right hand side of the ECM tray.

9. Fit the left hand and right hand multi-function lights from the kit to the ECM tray in the orientation shown. Secure the multi-function lights with the M6 x 12 mm encapsulated fixings from the kit. Tighten the fixing to **5 Nm**.



1. ECM tray
2. Multi-function light, left hand
3. Multi-function light, right hand
4. Fixings, M6 x 12 mm encapsulated



Caution

A wiring harness which becomes trapped or kinked during installation, or general motorcycle operation, may result in wiring harness damage and electrical malfunctions

10. Following the routing of the original harness, noted on removal, fit the multi-function harness from the kit.
11. Connect the multi-function lights to the multi-function harness. The red taped connector on the harness connects to the right hand side multi-function light.
12. Connect the multi-function light harness connector to the main wiring harness connector, as described in the Service Manual.
13. Following the instructions for the respective kit, fit accessory front LED indicators A9838023, A9838041 or A9838048.
14. Reconnect the battery, as described in the Service Manual.
15. Following the instructions for LED indicators A9838023, A9838041 or A9838048, set the indicator type.
16. Check the multi-function lights, indicators and licence plate light function correctly.

17. Disconnect the battery, as described in the Service Manual.
18. Refit the rear mudguard assembly as described in the Service Manual.
19. Refit and reconnect the battery as described in the Service Manual.



Warning

If, after fitting this accessory kit, you have any doubt about the performance of any aspect of the motorcycle, contact an authorised Triumph dealer and do not ride the motorcycle until the authorised dealer has declared it fit for use. Riding a motorcycle when there is any doubt as to any aspect of the performance of the motorcycle may result in loss of motorcycle control and an accident.



Warning

Never ride an accessory-equipped motorcycle at speeds above 80 mph (130 km/h).

The presence of accessories will cause changes in the stability and handling of the motorcycle. Failure to allow for changes in motorcycle stability may result in loss of motorcycle control and an accident.

Remember that the 80 mph (130 km/h) limit will be reduced by the fitting of non-approved accessories, incorrect loading, worn tyres, overall motorcycle condition and poor road or weather conditions.



Warning

The motorcycle must not be operated above the legal road speed limit except in closed-course conditions.



Warning

Only operate this Triumph motorcycle at high speed in closed-course, on-road competition or on closed-course racetracks. High-speed operation should only be attempted by riders who have been instructed in the techniques necessary for high-speed riding and are familiar with the motorcycle's characteristics in all conditions.

High-speed operation in any other circumstances is dangerous and may result in loss of motorcycle control and an accident.