



Accessory Fitting Instructions

Thank you for choosing this Triumph genuine accessory kit. This accessory kit is the product of Triumph's use of proven engineering, exhaustive testing, and continuous striving for superior reliability, safety and performance.

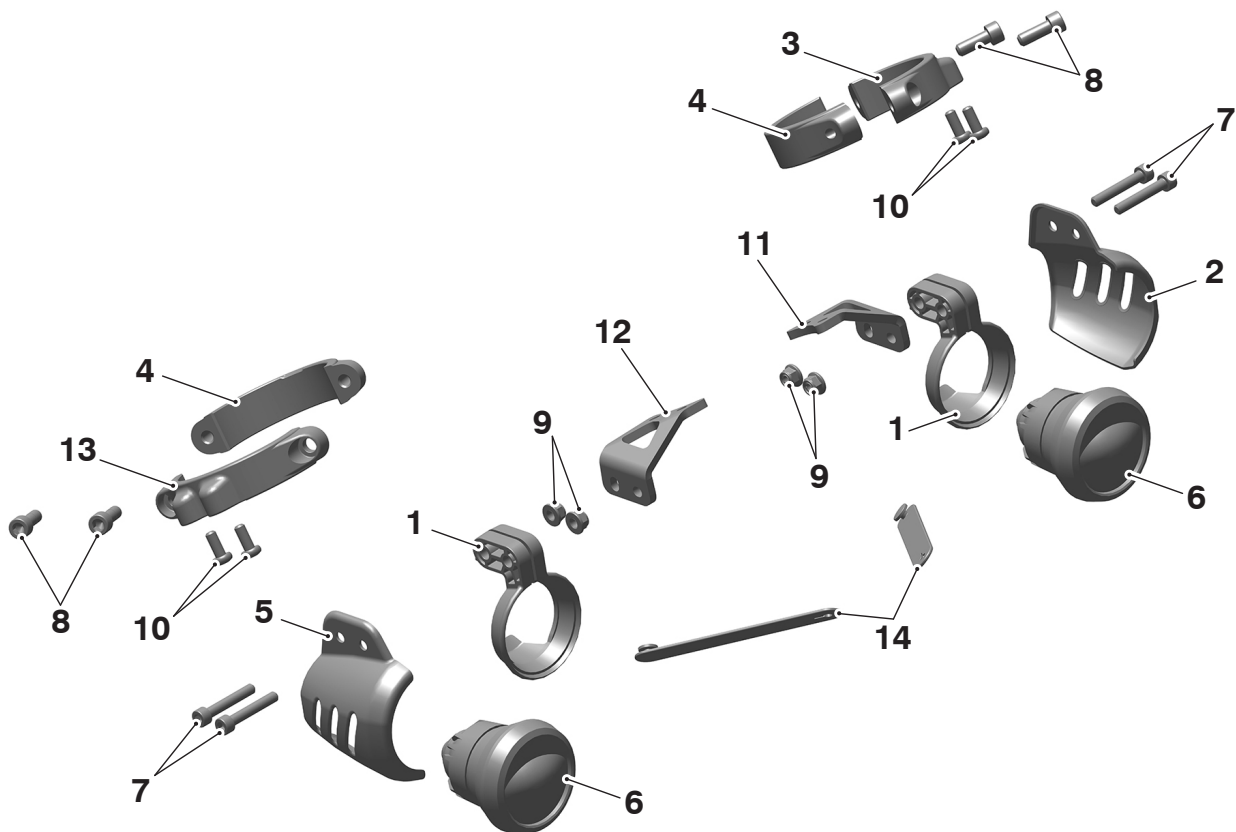
Completely read all of these instructions before commencing the installation of the accessory kit in order to become thoroughly familiar with the kit's features and the installation process.

These instructions should be considered a permanent part of your accessory kit, and should remain with it even if your accessory equipped motorcycle is subsequently sold.

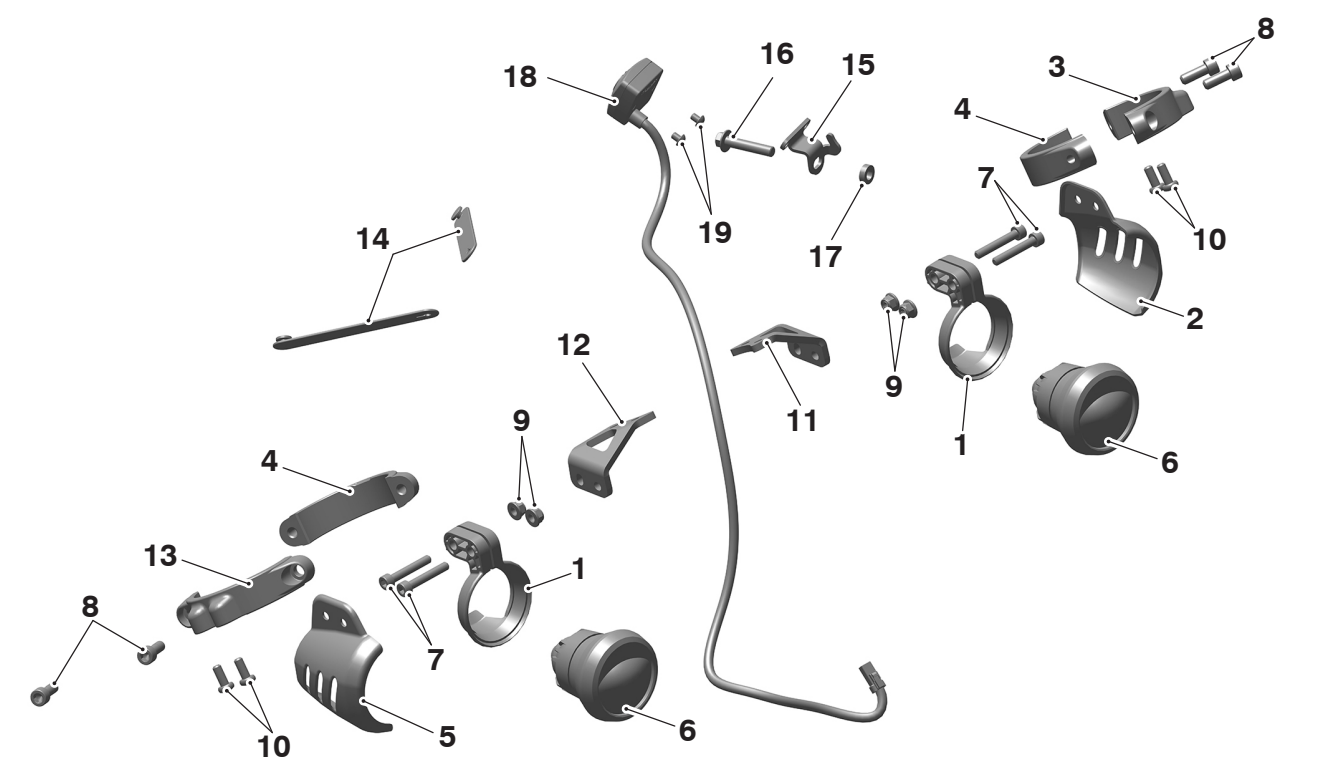
LED Fog Light Kit	
Kit Number	Models
A9838053, A9838094	Scrambler 1200 XC, Scrambler 1200 XE up to VIN BN8495
A9838267	Scrambler 1200 XE from VIN BP0885
A9838201	Scrambler 1200 X

Parts supplied

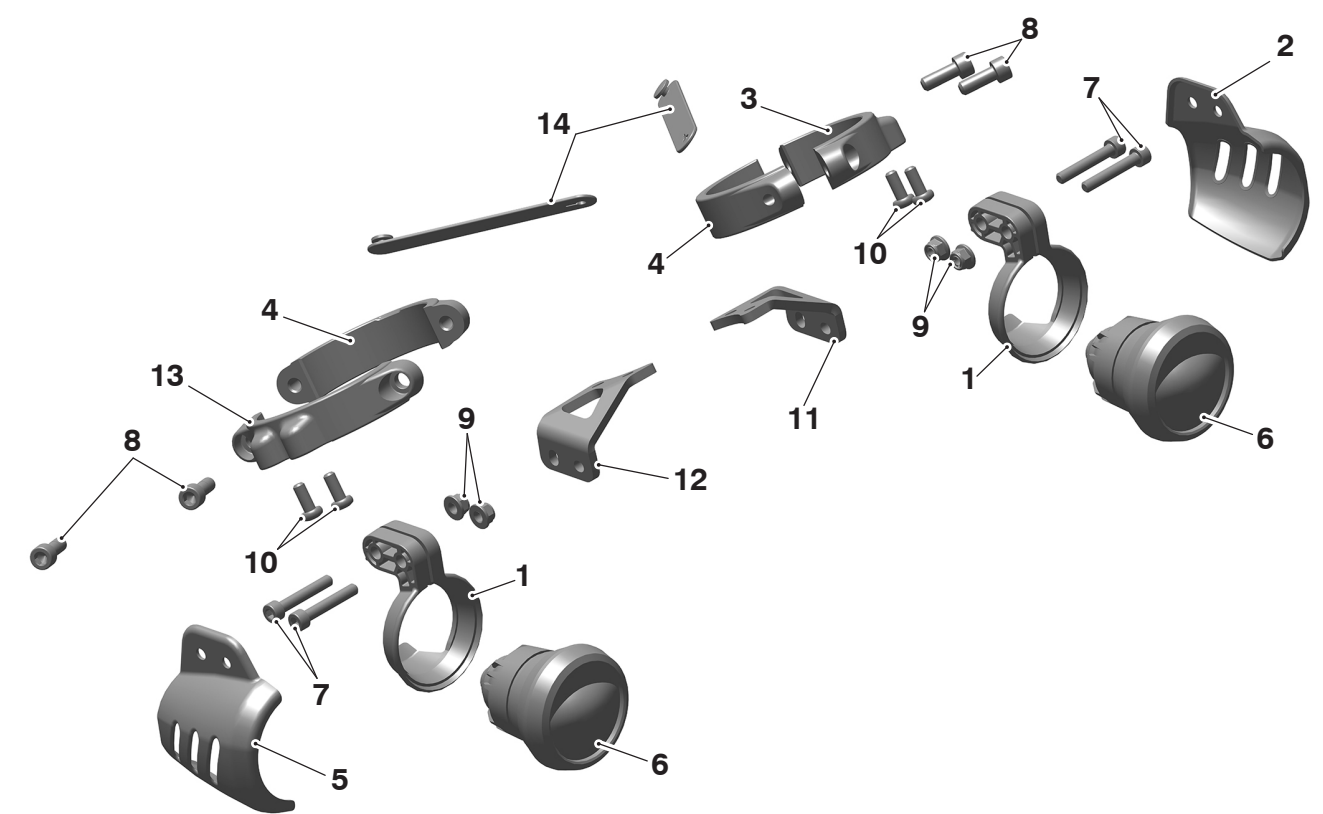
A9838053, A9838094



1. Plastic clamp	2 off	8. Fixing, M6 x 16 mm	4 off
2. Shroud, left hand	1 off	9. Lock nut, M5	4 off
3. Clamp, left hand	1 off	10. Fixing, M5 x 12 mm	4 off
4. Clamp, inner	2 off	11. Mounting bracket, left hand	1 off
5. Shroud, right hand	1 off	12. Mounting bracket, right hand	1 off
6. Fog light, LED	2 off	13. Clamp, right hand	1 off
7. Fixing, M5 x 30 mm	4 off	14. Rubber band	2 off



1. Plastic clamp	2 off	11. Mounting bracket, left hand	1 off
2. Shroud, left hand	1 off	12. Mounting bracket, right hand	1 off
3. Clamp, left hand	1 off	13. Clamp, right hand	1 off
4. Clamp, inner	2 off	14. Rubber band	2 off
5. Shroud, right hand	1 off	15. Mounting bracket, fog light switch	1 off
6. Fog light, LED	2 off	16. Fixing, M6 x 30 mm	1 off
7. Fixing, M5 x 30 mm	4 off	17. Spacer	1 off
8. Fixing, M6 x 16 mm	4 off	18. Switch, fog lights	1 off
9. Lock nut, M5	4 off	19. Fixing, M4 x 5 mm	1 off
10. Fixing, M5 x 12 mm	4 off	20. Subharness (not shown)	1 off



1. Plastic clamp	2 off	9. Lock nut, M5	4 off
2. Shroud, left hand	1 off	10. Fixing, M5 x 12 mm	4 off
3. Clamp, left hand	1 off	11. Mounting bracket, left hand	1 off
4. Clamp, inner	2 off	12. Mounting bracket, right hand	1 off
5. Shroud, right hand	1 off	13. Clamp, right hand	1 off
6. Fog light, LED	2 off	14. Rubber band	2 off
7. Fixing, M5 x 30 mm	4 off	15. Subharness (not shown)	1 off
8. Fixing, M6 x 16 mm	4 off		

⚠ WARNING

Fit only genuine Triumph accessories to those models approved by Triumph as listed in the associated Triumph fitting instructions.

The accessory kits covered in this instruction are designed for use on specific models of Triumph motorcycle. The accessory kits and the models applicable are listed at the start of the instruction. They should never be fitted to any other Triumph model or to any other manufacturer's motorcycle.

Fitting an accessory kit to a Triumph model not listed, or to any other manufacturer's motorcycle, will affect the performance, stability and handling of the motorcycle.

Failure to follow the advice above may lead to loss of motorcycle control which could result in serious injury or death.

⚠ WARNING

Always have Triumph approved parts, accessories and conversions fitted by a competent person with the specialist knowledge and technical understanding of motorcycles, such as an authorised Triumph dealer.

The fitment of parts, accessories and conversions by a person without the specialist knowledge and technical understanding of motorcycles may affect the handling, stability or other aspects of the motorcycle's operation.

Failure to follow the advice above may lead to loss of motorcycle control which could result in serious injury or death.

⚠ WARNING

A torque wrench of known accurate calibration must be used when fitting this accessory kit.

Failure to tighten any of the fasteners to the correct torque specification may affect motorcycle performance, handling and stability.

Failure to follow the advice above may lead to loss of motorcycle control which could result in serious injury or death.

⚠ WARNING

Make sure the motorcycle is stabilised and adequately supported.

Do not support the motorcycle on any ancillary component, the exhaust system or any other non structural parts of the motorcycle frame.

A correctly supported motorcycle will help prevent it from falling.

An unstable motorcycle may fall resulting in motorcycle damage, serious injury or death.

NOTICE

Triumph offers a broad range of approved genuine accessories for your motorcycle.

We cannot therefore cover all possible equipment variations in these instructions. For removal and installation of Triumph Genuine Accessories, always refer to the instructions supplied with the respective accessory kit.

To obtain additional copies of any Triumph accessory instructions, visit www.triumphinstructions.com or contact your authorised Triumph dealer.

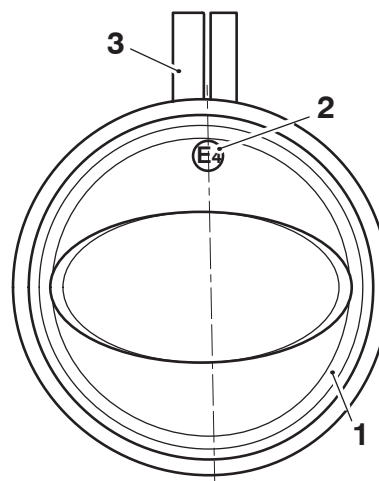
Fitment of fog lights

All Models

1. Remove the rider's seat as described in the Service Manual.
2. Disconnect the battery, as described in the Service Manual.
3. Collect the fog lights, shrouds, mounting brackets and plastic clamps from the kit.

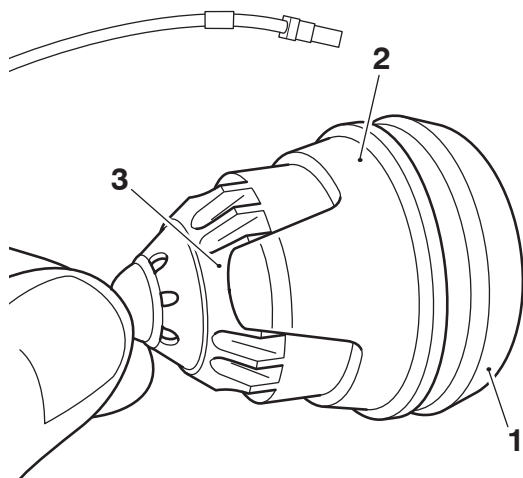
NOTICE

When fitting the plastic clamps to the fog lights the E marking on the fog light lens should always be positioned centrally at the top of the fog light, in line with the plastic clamp mounting, as shown below.



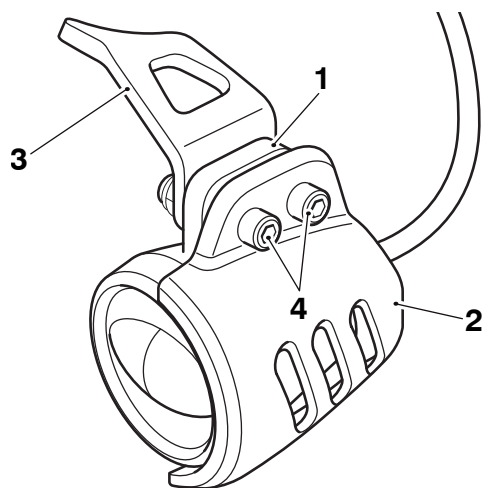
1. Fog light
2. E marking
3. Plastic clamp mounting

- Fit the plastic clamps onto the fog lights as shown making sure the lower section of the plastic clamp locates in the recess in the underside of the fog light body.



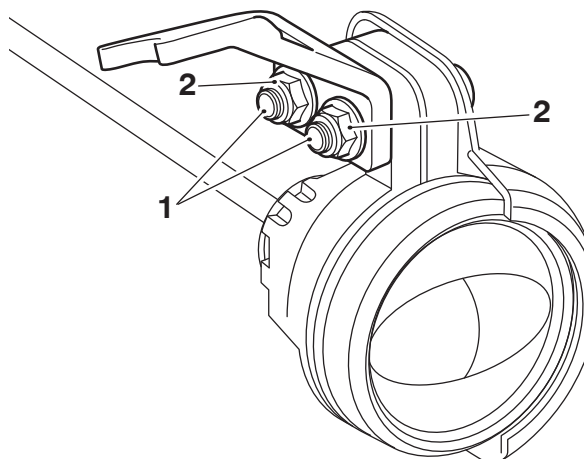
- Fog light
- Plastic clamp, lower section
- Recess, fog light body

- Align the fixing holes of the left hand fog light shroud, plastic clamp and left hand mounting bracket and fit the M5 x 30 mm fixings from the kit.



- Plastic clamp
- Shroud
- Mounting bracket, left hand
- Fixings, M5 x 30 mm

- Fit the M5 lock nuts from the kit to the M5 x 30 mm fixings, do not fully tighten the fixings at this stage.



- Fixings, M5 x 30 mm
- Lock nuts, M5

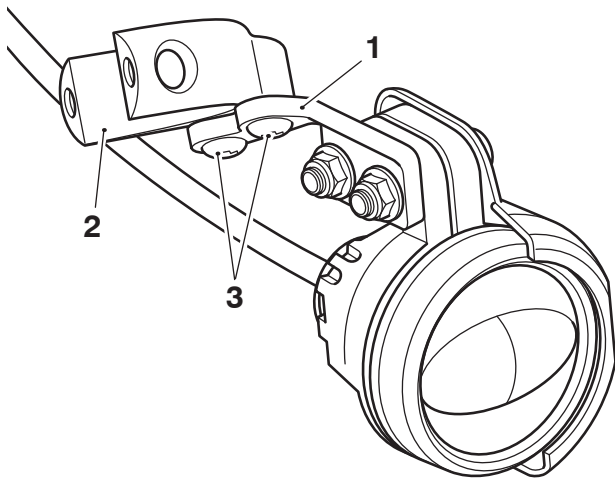
NOTICE

The left hand and right hand clamps are identified by the position of the fog light bracket mounting positions. When fitted to the fork leg, the bracket mounting positions should be towards the rear of the motorcycle.



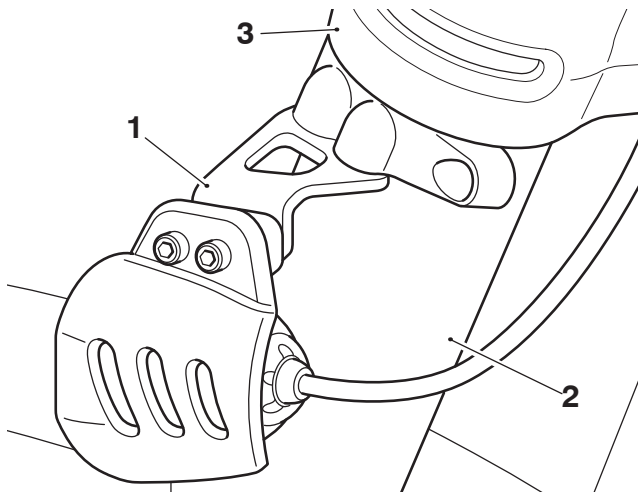
- Left hand clamp
- Right hand clamp
- Fog light bracket mountings

7. Fit the left hand clamp from the kit on to the left hand mounting bracket in the orientation shown. Fit two M5 x 12 mm fixings from the kit and tighten to **3 Nm**.



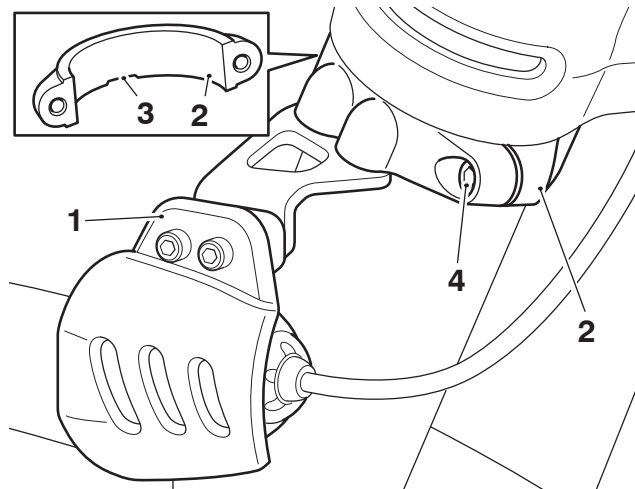
1. Mounting bracket, left hand
2. Clamp, left hand
3. Fixings, M5 x 12 mm

8. Fit the left hand fog light assembly to the left hand fork leg and position the clamp at the underside of the lower yoke, as shown.



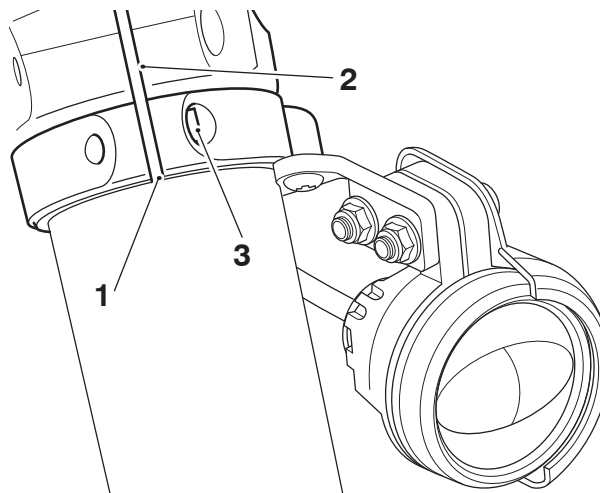
1. Fog light assembly, left hand
2. Fork leg, left hand
3. Lower yoke

9. Position an inner clamp on to the fork leg in the orientation shown with the recess in the clamp at the bottom and align with the fog light assembly. Fit the M6 x 16 mm fixings from the kit, do not fully tighten the fixings at this stage.



1. Fog light assembly
2. Inner clamp
3. Recess
4. Fixings, M6 x 16 mm, rear fixing shown

10. Align the split line of the fog light clamps with the split line of the lower yoke. Tighten the fixings, rear fixing first, to **8 Nm**.

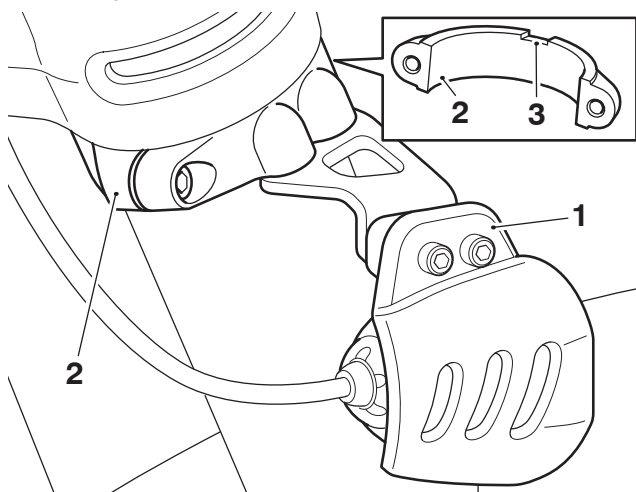


1. Split line, Fog light clamps
2. Split line, Lower yoke
3. Fixings, M6 x 16 mm, front fixing shown

NOTICE

When fitting the right hand fog light assembly the recess in the inner clamp must be positioned at the top, as shown below.

11. Adjust the position of the fog light until the front face is vertical. Tighten the M5 x 30 mm fixings to **4.5 Nm**.

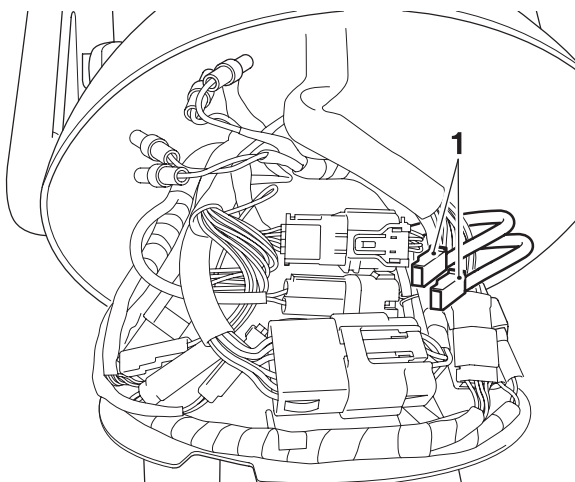


1. Fog light assembly, right hand
2. Inner clamp
3. Recess

12. Repeat steps 5 to 11 for the right hand side, making sure the right hand fog light aligns to the left hand fog light.

Scrambler 1200 XC and Scrambler 1200 XE to VIN BN8495 only

13. Remove the headlight as described in the Service Manual.
14. Route the left hand and right hand fog light harnesses in to the headlight bowl making sure they are routed under all existing cables and harnesses.
15. Locate the main wiring harness fog light connectors in the headlight bowl.



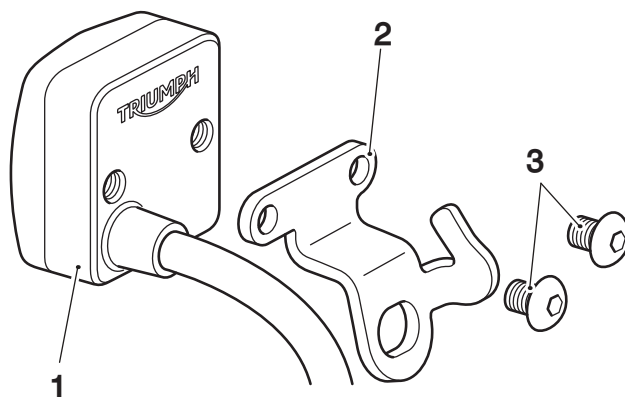
1. Fog light connectors, main wiring harness

16. Connect the left hand and right hand fog light harness connectors to the main wiring harness connectors.

17. Refit the headlight as described in the Service Manual.

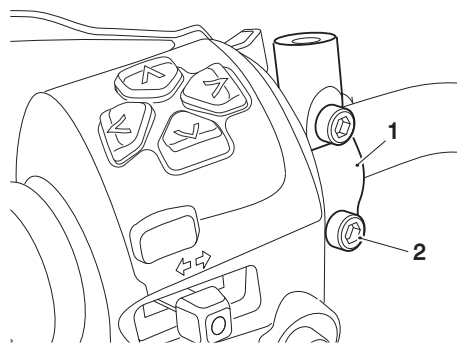
Scrambler 1200 X only

18. Fit the mounting bracket to the rear of the switch, in the orientation shown, and secure with the two M4 x 5 mm fixings. Tighten the fixings to **3 Nm**.



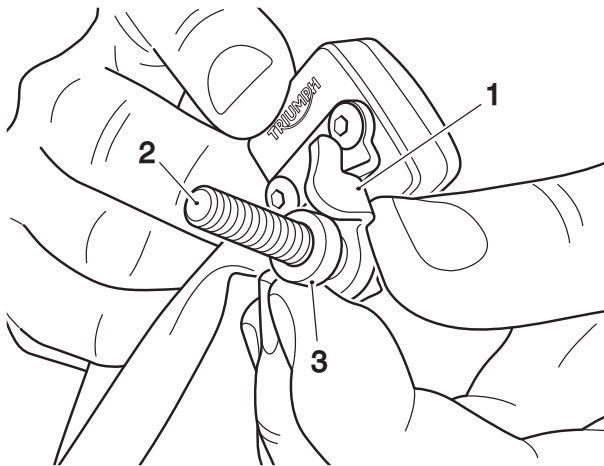
1. Switch
2. Mounting bracket, fog light switch
3. Fixing, M4 x 5 mm

19. Remove the lower clutch lever clamp fixing. Retain the fixing for reuse if the motorcycle is to be returned to its original condition.



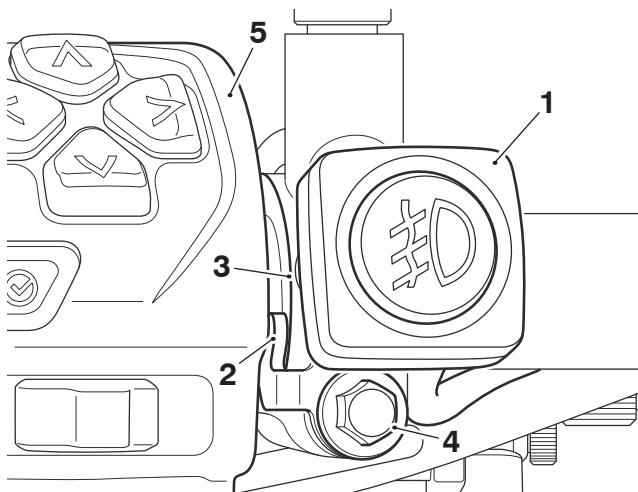
1. Clamp
2. Lock nut, M5

20. Fit the M6 x 30 mm fixing through the mounting bracket, then fit the spacer on to the fixing, as shown.



1. Mounting bracket, fog light switch
2. Fixing, M6 x 30 mm
3. Spacer

21. Position the switch assembly on the clutch lever clamp fitting the M6 x 30 mm fixing in to the clamp lower fixing position, do not fully tighten at this stage.
22. Make sure the switch sits parallel to the switch housing as shown below, then tighten the M6 x 30 mm fixing to **10 Nm**.



1. Switch, fog lights
2. Mounting bracket, fog light switch
3. Clutch lever clamp
4. Fixing, M6 x 30 mm
5. Switch housing

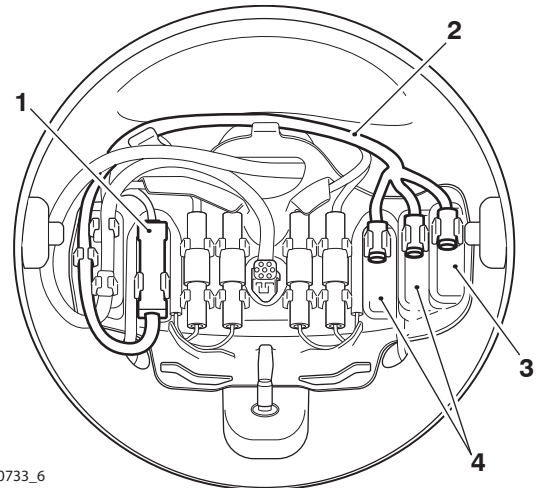
23. Route the fog light switch harness along the left hand switch housing harness through the cable guide. Secure to the handlebar using the fitted rubber band.
24. Remove the headlight as described in the Service Manual.

NOTICE

The switch connector on the subharness is a 3 pin connector.

The fog light connectors on the subharness are 2 pin connectors.

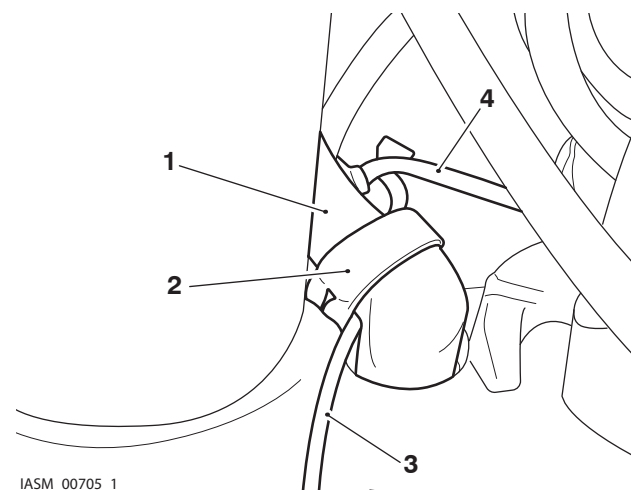
25. Collect the subharness from the kit and connect to the subharness connector.



IASM_00733_6

1. Fog light subharness connector
2. Fog light subharness
3. Switch connector housing
4. Fog light connector housing

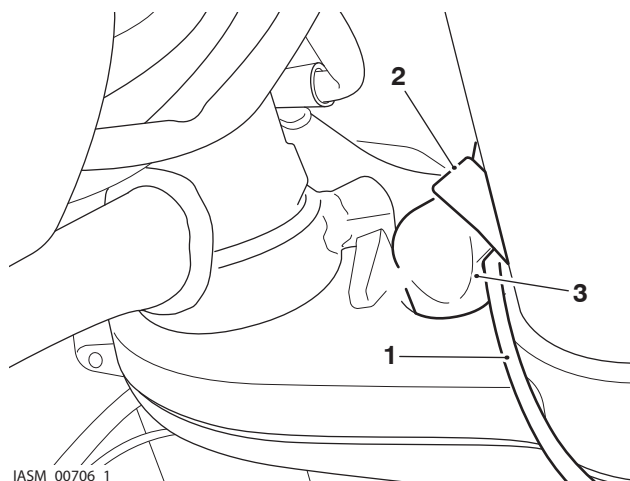
26. Fit the fog light switch connector to the switch connector housing.
27. Connect the left hand fog light to the connector in the centre housing.
28. Connect the right hand fog light to the connector in the left hand housing.
29. Secure the left hand fog light cable to the headlight mounting brackets using the rubber band from the kit.



IASM_00705_1

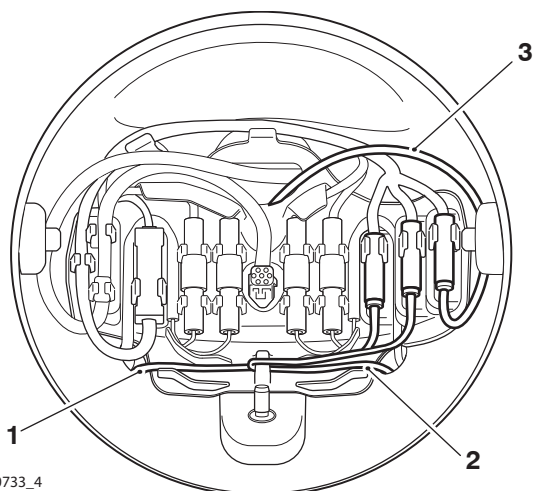
1. Headlight bracket, left hand side
2. Rubber band
3. Fog light harness, left hand side
4. Front wheel speed sensor harness

30. Secure the right hand fog light cable to the headlight mounting brackets using the rubber band from the kit.



- 1. Fog light harness, right hand side**
2. Rubber band
3. Headlight bracket, right hand side

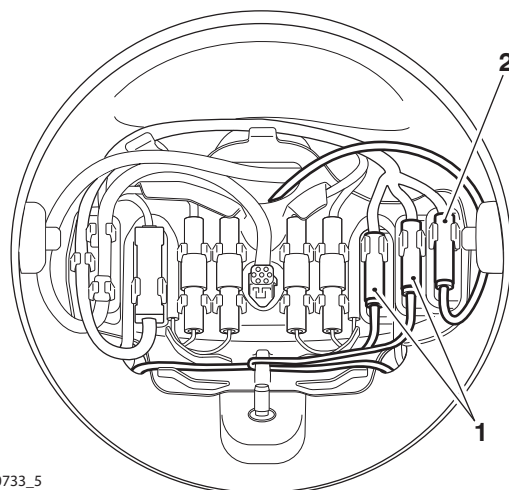
31. Route the switch harness through the centre hole of the headlight bowl.
32. Route the left hand and right hand fog light harnesses in to the headlight bowl through the bottom holes.



- 1. Fog light harness, right hand side**
2. Fog light harness, left hand side
3. Fog light switch harness

33. Connect the fog light switch harness connector to the 3-pin connector on the subharness.

34. Connect the left hand and right hand fog light harness connectors to the subharness connectors.

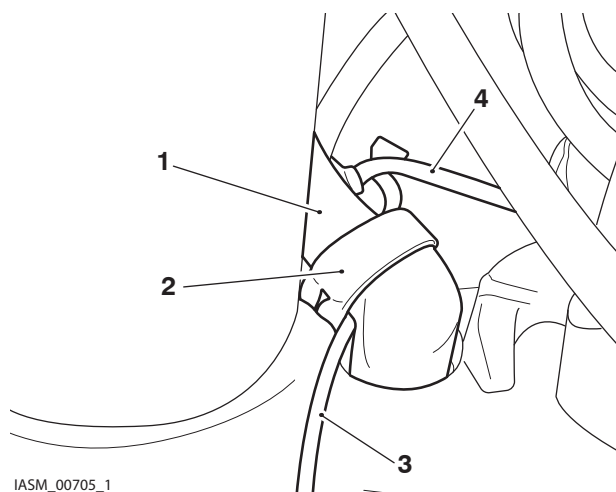


- 1. Fog light harness connectors**
2. Fog light switch harness connector

35. Refit the headlight as described in the Service Manual.

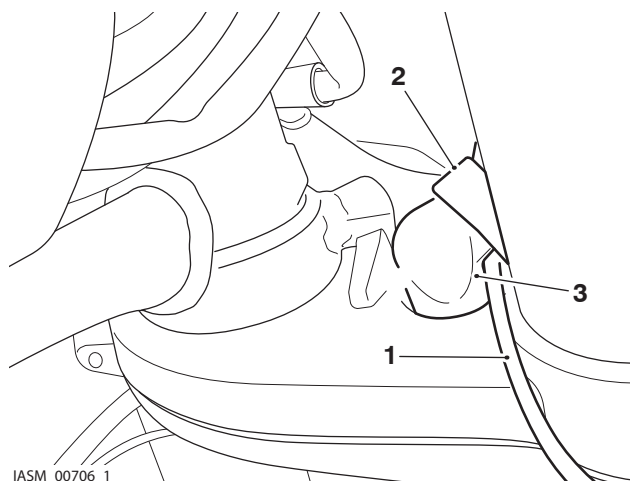
Scrambler 1200 XE from VIN BP0885 only

37. Remove the headlight as described in the Service Manual.
38. Secure the left hand fog light cable to the headlight mounting brackets using the rubber band from the kit.



- 1. Headlight bracket, left hand side**
2. Rubber band
3. Fog light harness, left hand side
4. Front wheel speed sensor harness

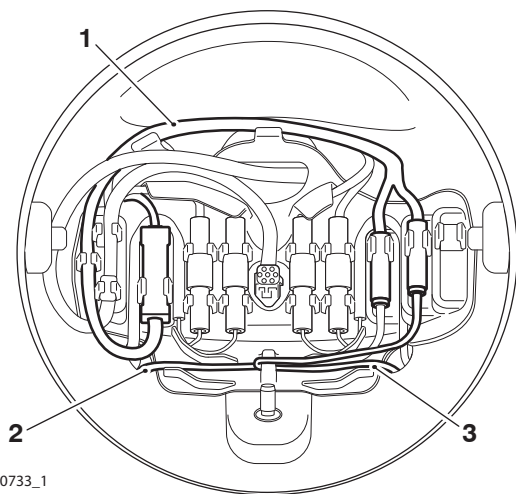
39. Secure the right hand fog light cable to the headlight mounting brackets using the rubber band from the kit.



IASM_00706_1

1. Fog light harness, right hand side
2. Rubber band
3. Headlight bracket, right hand side

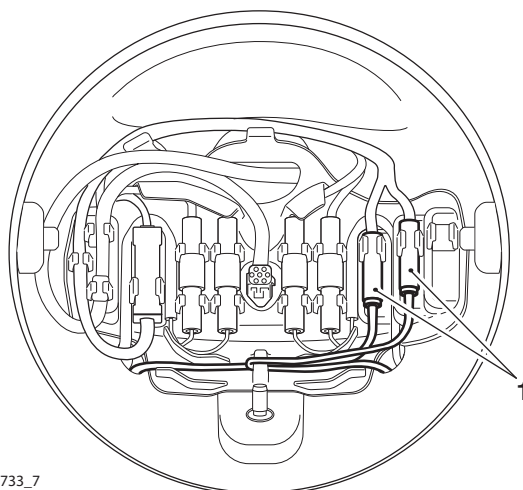
40. Locate the main wiring harness fog light connectors in the headlight bowl and connect the subharness from the kit.
41. Route the left hand and right hand fog light harnesses in to the headlight bowl through the bottom holes.



IASM_00733_1

1. Fog light subharness
2. Fog light harness, right hand side
3. Fog light harness, left hand side

42. Connect the left hand and right hand fog light harness connectors to the subharness connectors.



IASM_00733_7

1. Fog light harness connectors

43. Refit the headlight as described in the Service Manual.

All models

⚠ WARNING

Move the handlebars to the left and right full lock while checking that the fog light harnesses do not bind.

A harness that binds will restrict the steering and may lead to loss of motorcycle control which could result in serious injury or death.

44. Reconnect the battery, as described in the Service Manual.
45. Refit the rider's seat, as described in the Service Manual.

Fog Light System Testing

1. Operate the fog lights switch and check that the fog lights come on.

NOTICE

The fog lights will not operate when the headlight is in daytime running lights (DRL) mode.

NOTICE

Scrambler XE from VIN BP0885 only

The fog lights will only operate with low-beam.

2. While sitting on the motorcycle, check the fog light alignment against a wall.
3. If the angle of the fog lights needs adjusting, loosen the fixings, reposition the fog light, and then tighten the M5 x 30 mm fixings to **4.5 Nm**.

Fog Light Operation

The fog lights will remain on when the engine is turned off using the engine stop switch. When the engine is not running turn off the ignition, or switch the fog lights off to avoid draining the battery.

The fog lights are protected by a chassis ECM which will automatically cut power in the event of an overload.

Power can be restored to the fog lights by turning the ignition switch off, then on again, provided that the condition that caused the fault has been rectified.

In the event of a more serious overload, fuse number PS 3 protects the fog lights. Refer to the label in the fuse box lid for fuse amperage.

WARNING

After fitting the accessory kit the motorcycle will exhibit new handling characteristics.

Operate the motorcycle in a safe area free from traffic to gain familiarity with any new characteristics.

Operation of the motorcycle when not familiar with any new handling characteristics may lead to loss of motorcycle control which could result in serious injury or death.

WARNING

If, after fitting this accessory kit, you have any doubt about the performance of any aspect of the motorcycle, contact a competent person with the specialist knowledge and technical understanding of motorcycles, such as an authorised Triumph dealer.

Riding a motorcycle when there is any doubt as to any aspect of the performance of the motorcycle may lead to loss of motorcycle control which could result in serious injury or death.

WARNING

Never ride an accessory-equipped motorcycle at speeds above 80 mph (130 km/h).

Remember that the 80 mph (130 km/h) limit will be reduced by the fitting of non-approved accessories, incorrect loading, worn tyres, overall motorcycle condition and poor road or weather conditions.

The presence of accessories will cause changes in the stability and handling of the motorcycle. Failure to allow for changes in motorcycle stability may lead to loss of motorcycle control which could result in serious injury or death.

WARNING

High-speed operation should only be attempted by riders who have been instructed in the techniques necessary for high-speed riding and are familiar with the motorcycle's characteristics in all conditions.

Only operate this Triumph motorcycle at high speed in closed-course, on-road competition or on closed-course racetracks.

High-speed operation in any other circumstances is dangerous and may lead to loss of motorcycle control which could result in serious injury or death.

NOTICE

The motorcycle must not be operated above the legal road speed limit except in closed-course conditions.