



Accessory Fitting Instructions

LED Fog Light Kit	
Kit number	Models Affected
A9838029	Tiger XR, Tiger XRx, Tiger XC, Tiger XCx, Tiger 800 XR
To be fitted with	
Auxiliary Switch Kit	
Kit number	Models Affected
A9828031	Tiger XR, Tiger XRx, Tiger XC, Tiger XCx

Note:

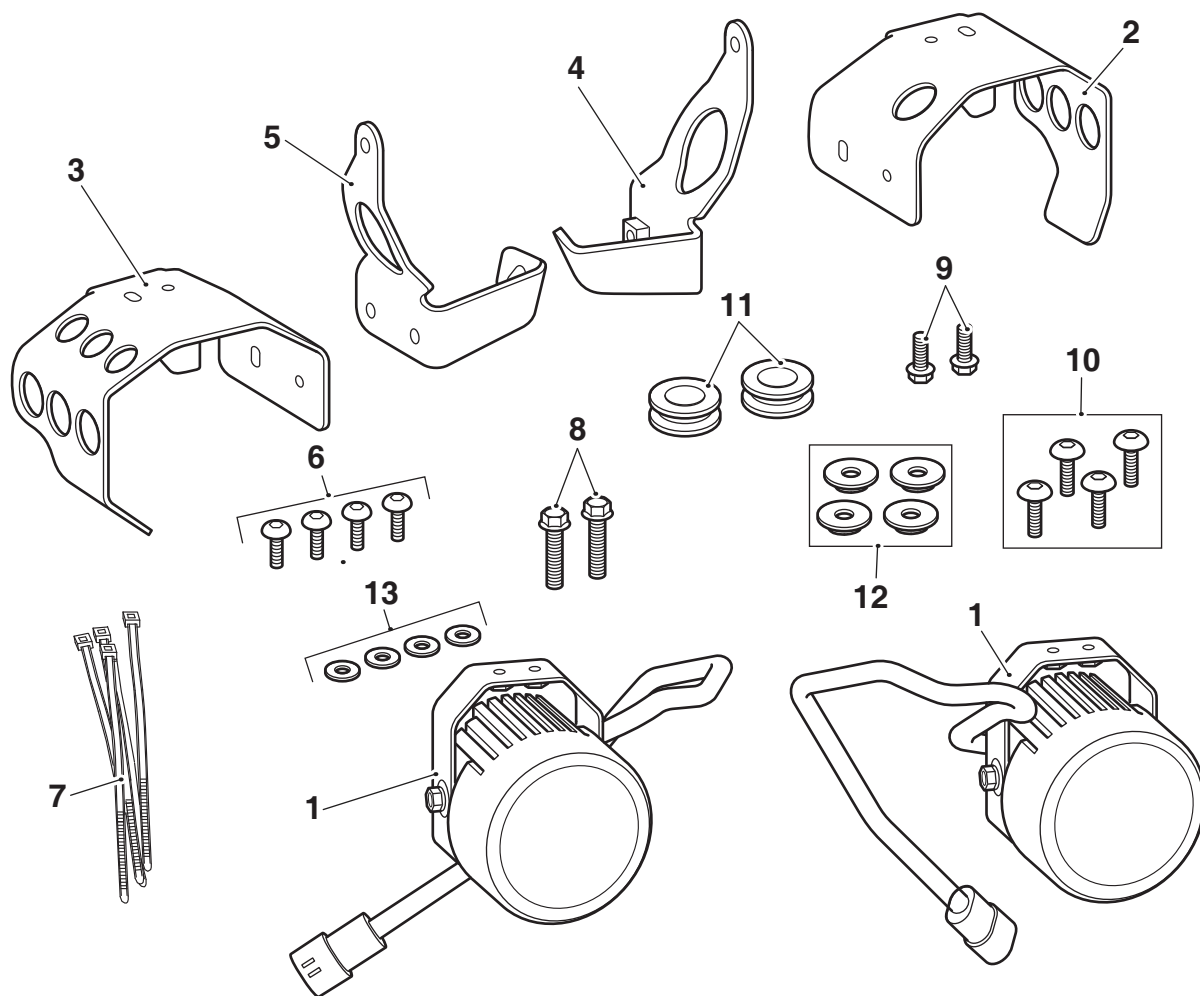
- **The LED fog light kit A9838029 can only be fitted to the motorcycle models listed when used together with the auxiliary switch kit A9828031.**
- **If heated grips have previously been fitted to the motorcycle models listed, the auxiliary switch will already be installed.**

Thank you for choosing this Triumph genuine accessory kit. This accessory kit is the product of Triumph's use of proven engineering, exhaustive testing, and continuous striving for superior reliability, safety and performance.

Completely read all of these instructions before commencing the installation of the accessory kit in order to become thoroughly familiar with the kit's features and the installation process.

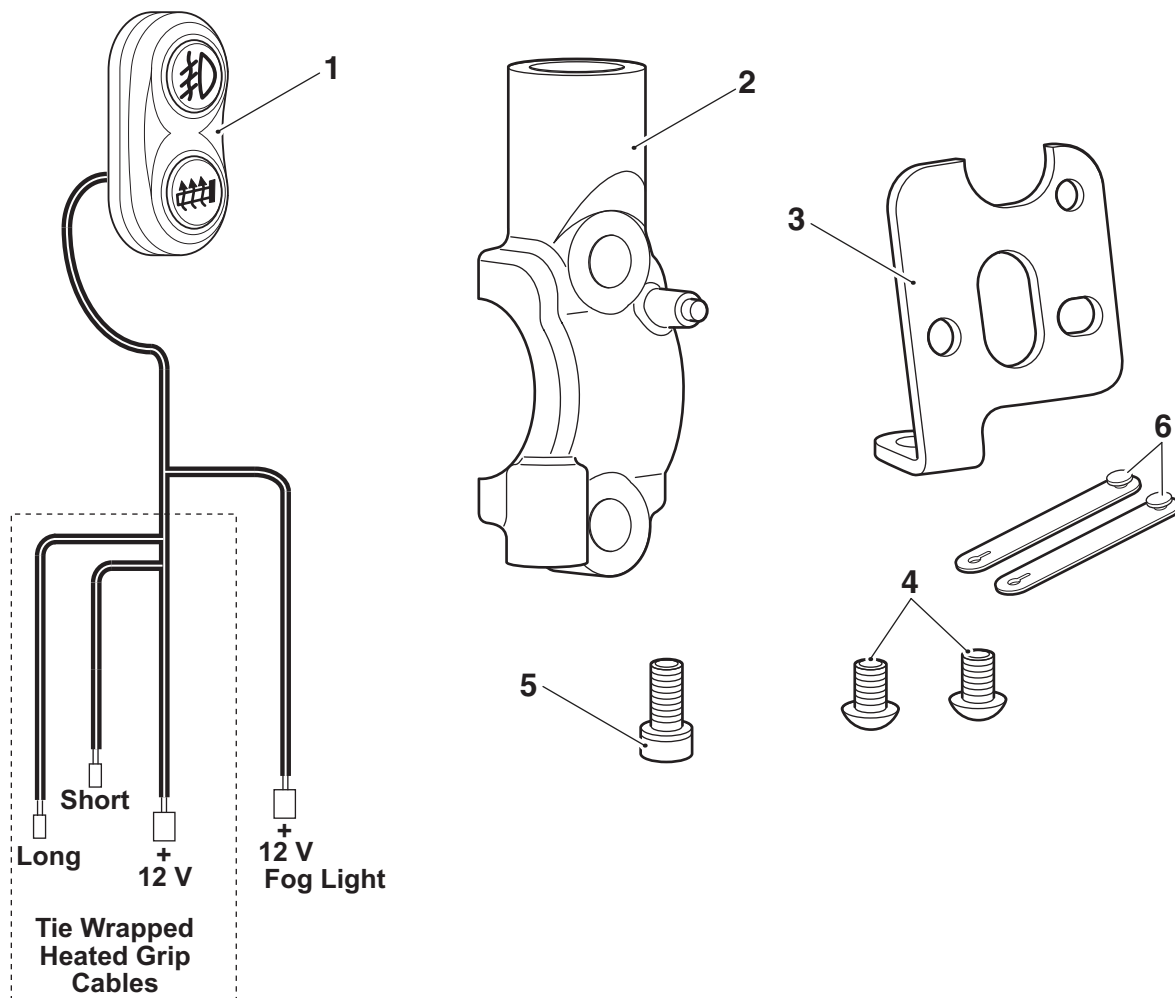
These instructions should be considered a permanent part of your accessory kit, and should remain with it even if your accessory equipped motorcycle is subsequently sold.

Parts supplied: A9838029



1.	Fog light, LED	2 off	8.	Bolt, M6 x 25 mm	2 off
2.	Shroud, left hand	1 off	9.	Bolt, M6 x 16 mm	2 off
3.	Shroud, right hand	1 off	10.	Screw, M5 x 16 mm	4 off
4.	Bracket, left hand	1 off	11.	Grommet	2 off
5.	Bracket, right hand	1 off	12.	Flanged sleeve, 6.4 x 11 x 2.75 mm	4 off
6.	Screw, M5 x 12 mm	4 off	13.	Washer, M5	4 off
7.	Cable tie	4 off			

Parts supplied: A9828031



1.	Auxiliary switch	1 off	4.	Screw, M4 x 5 mm	2 off
2.	Clamp, clutch lever	1 off	5.	Screw, M4 x 8 mm	1 off
3.	Mount plate	1 off	6.	Rubber strap	2 off

Warning

The accessory kits covered in this instruction are designed for use on specific models of Triumph motorcycle. The accessory kits and the models applicable are listed at the start of the instruction. They should not be fitted to any other Triumph model or to any other manufacturer's motorcycle. Fitting an accessory kit to a Triumph model not listed, or to any other manufacturer's motorcycle will affect the performance, stability and handling of the motorcycle. This may affect the rider's ability to control the motorcycle and could cause an accident.

Warning

Always have Triumph approved parts, accessories and conversions fitted by a trained technician of an authorised Triumph dealer. The fitment of parts, accessories and conversions by a technician who is not of an authorised Triumph dealer may affect the handling, stability or other aspects of the motorcycle's operation which may result in loss of motorcycle control and an accident.

Warning

Always ensure that the newly installed wiring does not chafe against other parts of the motorcycle such that it may be rubbed through and cause an electrical problem. In addition, always ensure that the newly installed wiring will not restrict steering movement. Both conditions are hazardous and could give rise to a dangerous riding condition resulting in a fire, loss of motorcycle control and an accident.

Warning

Throughout this operation, ensure that the motorcycle is stabilised and adequately supported to prevent risk of injury from the motorcycle falling.

Warning

A torque wrench of known accurate calibration must be used when fitting this accessory kit. Failure to tighten any of the fasteners to the correct torque specification may affect motorcycle performance, handling and stability. This may result in loss of motorcycle control and an accident.

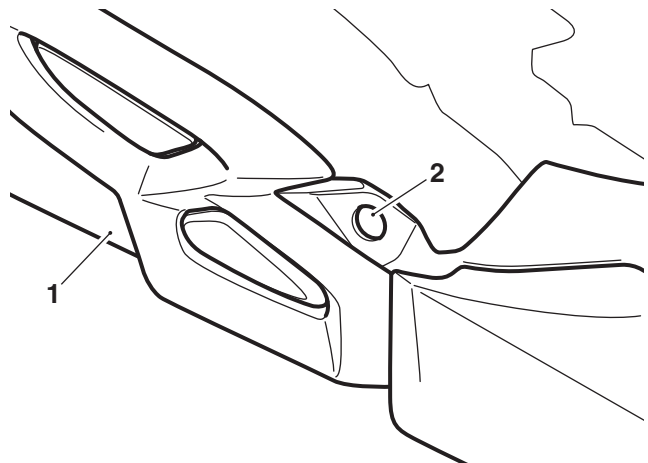
Note:

- Triumph offers a broad range of approved genuine accessories for your motorcycle. We cannot therefore cover all possible equipment variations in these instructions. For removal and installation of Triumph Genuine Accessories always refer to the instructions supplied with the respective accessory kit. To obtain additional copies of any Triumph accessory instructions, visit www.triumphinstructions.com or contact your authorised Triumph dealer.

- Remove the rider's seat as described in the Service Manual.
- Disconnect the battery, negative (black) lead first.
- Remove the cockpit assembly as described in the Service Manual.
- Remove the upper side panels and the radiator infill panels as described in the Service Manual.

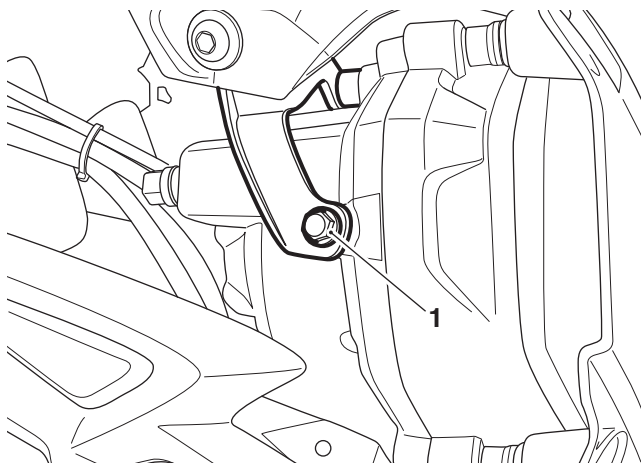
Fog Light Bracket Fitment

- Drill out the front hole in both cockpit panels to 12 mm diameter, to allow fitment of the flanged sleeves.



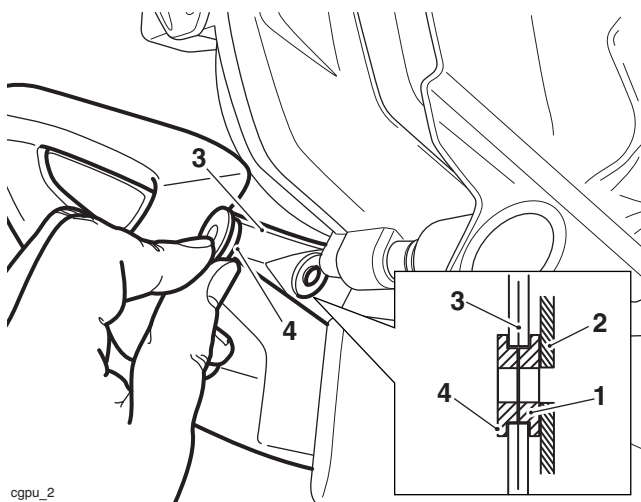
- Cockpit panel**
- Front hole - drill out to 12 mm**
- From the inside, fit a flanged sleeve to the two 12 mm holes drilled through cockpit panel at the previous step.
- Refit the cockpit panels, ensuring the flanged sleeves remain in position. Do not fit the front hole fixing at this stage.

- Remove the windscreen bracket lower fixings from the headlight. Retain the fixings if the motorcycle is to be returned to its original condition.



1. Windscreen bracket lower fixing

- Insert a second flanged sleeve into the outside of the 12 mm hole in the right hand cockpit panel.



cgpu_2

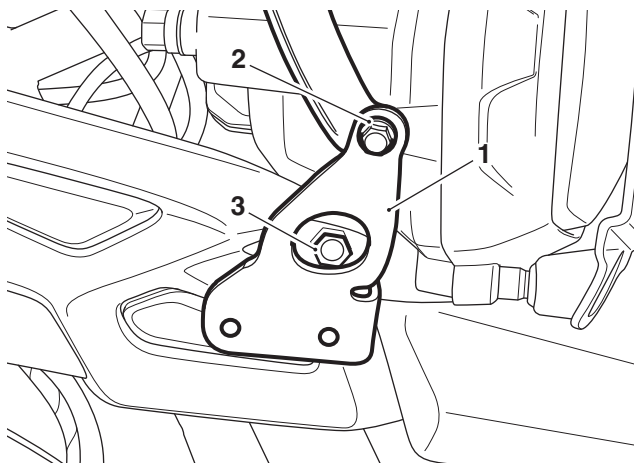
- Flanged sleeve (inner)
- Front subframe
- Cockpit panel
- Flanged sleeve (outer)

- Attach the right hand fog light bracket at the headlight using an M6 x 16 mm bolt. Do not tighten the fixing at this stage.

Note:

- Lock nuts can be reused, providing resistance can be felt when the locking portion passes over the thread of the bolt or stud.
- Always use the correct replacement lock nut as recommended in the Triumph parts catalogue.


- Attach the right hand fog light bracket to the front subframe panel through the flanged sleeve using an M6 x 25 mm bolt, and reusing the original lock nut.



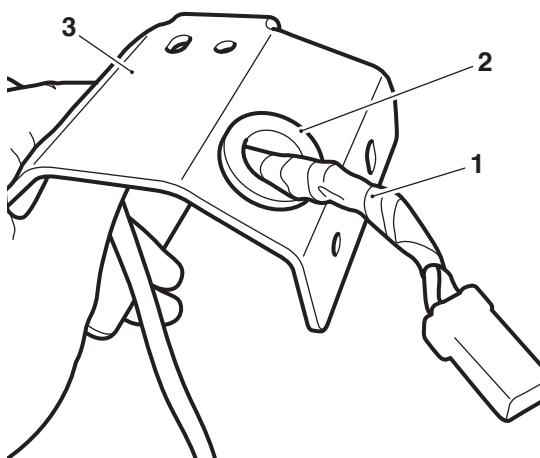
- Fog light bracket
- Upper bolt, M6 x 16 mm
- Lower bolt, M6 x 25 mm

- Tighten the upper bolt to **4 Nm** and the lower bolt to **9 Nm**.
- Repeat steps 4 to 8 for the left hand bracket.

Fog Light Fitment

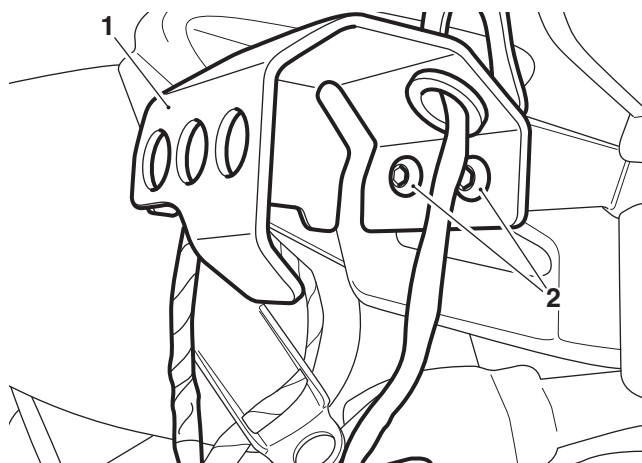
 Caution
<p>Do not allow the fog light to hang unsupported from the harness during installation. Allowing the fog light to hang from the harness will cause damage to the fog light.</p>

- Fit a grommet on to the right hand fog light harness.
- Fit the grommet through the cable hole in the right hand shroud.



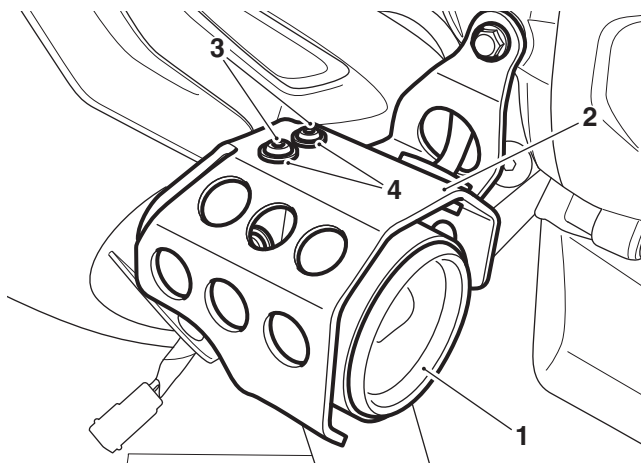
- Fog light harness (right hand shown)
- Grommet
- Shroud

- Attach the shroud to the right hand fog light bracket using the M5 x 16 mm screws. Do not tighten the fixings at this stage.



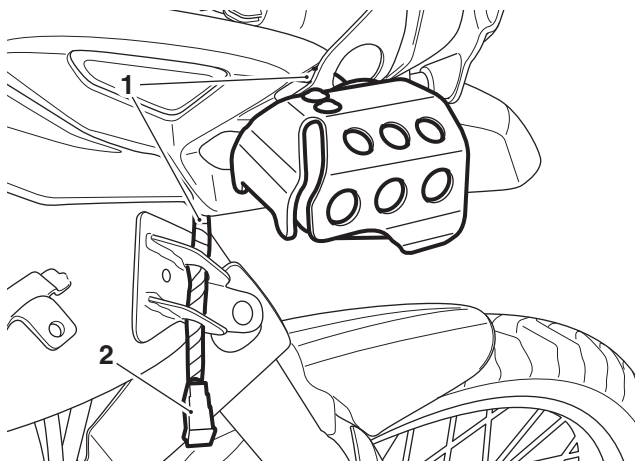
- Shroud (right hand shown)
- M5 x 16 mm screws

- Adjust the shroud until it is horizontal and tighten the screws to **6 Nm**.
- Fit the right hand fog light to the shroud using two M5 x 12 mm screws and M5 washers from the kit. Do not tighten the fixings at this stage.



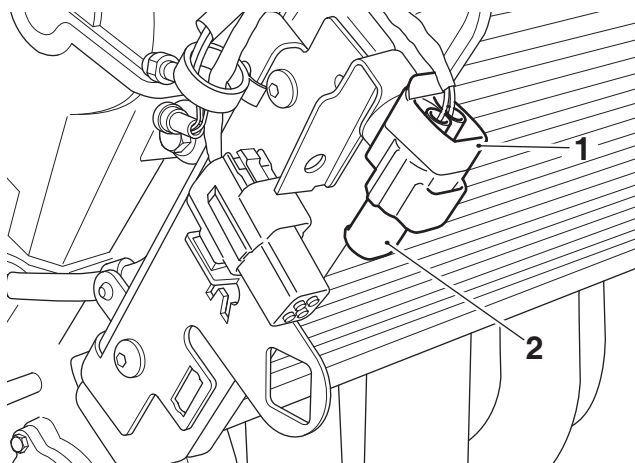
- Fog light (right hand shown)
- Shroud
- M5 x 12 mm screws
- Washers

- Route the fog light cable through the mounting bracket, around the cockpit moulding, under the fuel tank front bracket.



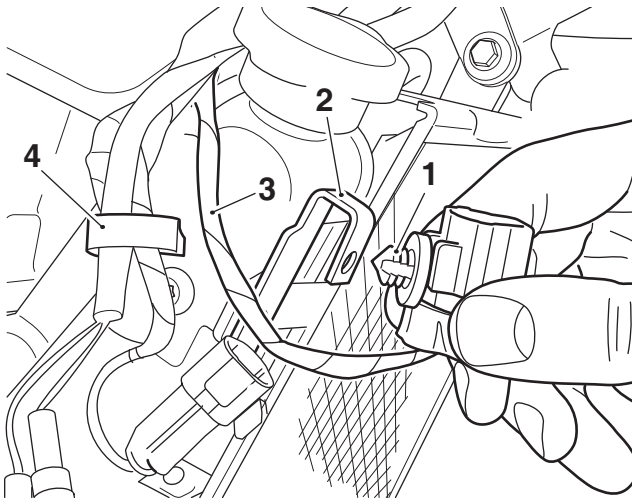
- Fog light harness (right hand shown)
- Fog light harness connector

- Repeat steps 1 to 6 for the left hand fog light and shroud, ensuring the left hand shroud aligns to the right hand shroud.
- Identify the right hand fog light connector on the main wiring harness (located at the right hand side of the radiator) and remove the blanking plug. Retain the blanking plug if the motorcycle is to be returned to its original condition.



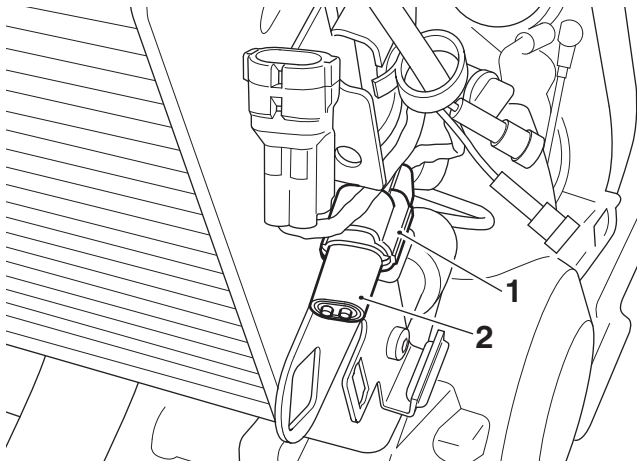
- Right hand fog light connector (main harness)
- Blanking plug (right hand fog light)

- Release the right hand fog light connector from the right hand radiator bracket and then unthread the fog light harness from the Omega clip.



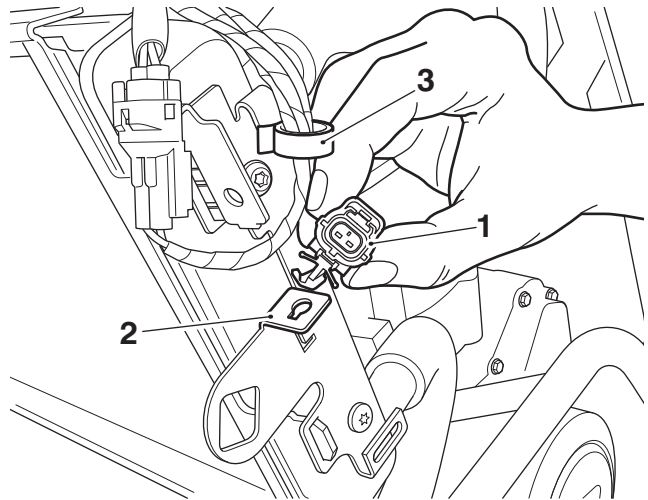
- Right hand fog light harness connector
- Radiator bracket (right hand)
- Harness
- Omega clip

- Identify the left hand fog light connector on the main wiring harness (located at the left hand side of the radiator) and remove the blanking plug. Retain the blanking plug if the motorcycle is to be returned to its original condition.



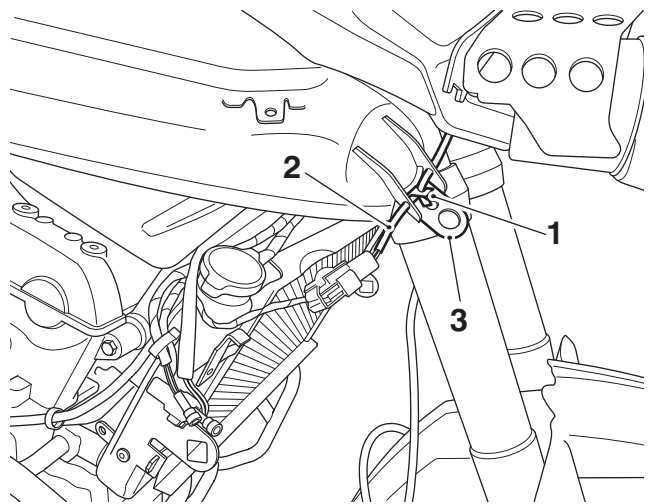
- Left hand fog light connector (main harness)
- Blanking plug (left hand fog light)

- Release the left hand fog light harness connector from the left hand radiator bracket and then unthread the harness from the Omega clip.



- Left hand fog light harness connector
- Radiator bracket (left hand)
- Omega clip

- Connect the left hand and right hand fog light connectors to the main harness connectors.
- Secure the left hand and right hand fog light harnesses to the upper fuel tank brackets with cable ties.



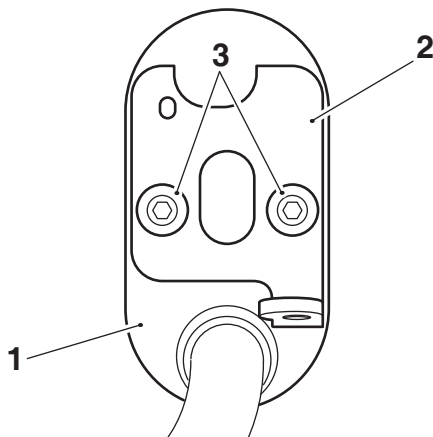
- Cable tie
- Fog light harness
- Fuel tank bracket, right hand side shown

Note:

- If heated grips are not fitted to the motorcycle, continue from step 1, Auxiliary Switch Fitment.
- If heated grips are fitted to the motorcycle, continue from step 13, Auxiliary Switch Fitment.

Auxiliary Switch Fitment

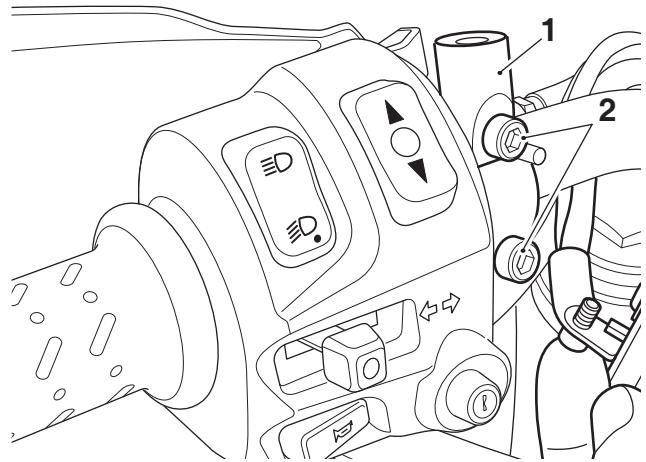
1. Align the auxiliary switch on the switch mount plate, as shown and secure with the two M4 x 5 mm screws. Tighten the screws to **3 Nm**.



1. Auxiliary switch
2. Switch mount plate
3. M4 x 5 mm screws

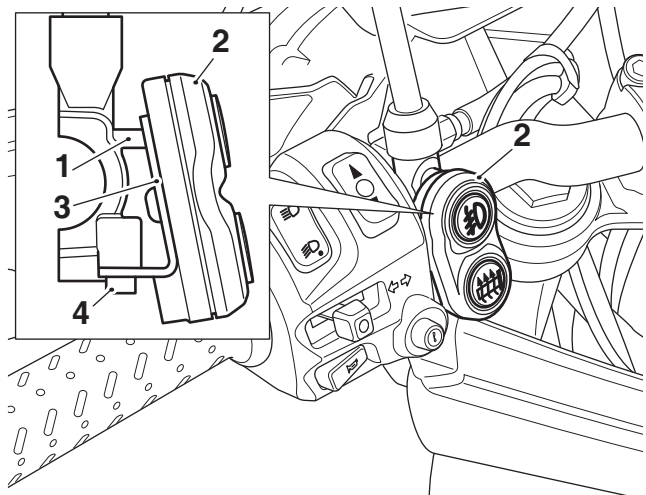
2. Slide the rubber boot up the left hand mirror stem to expose the mirror stem lock nut. Release the lock nut and remove the left hand mirror assembly. Retain the mirror assembly for reuse.
3. Support the clutch lever assembly and remove the two bolts. Retain the clamp if the motorcycle is to be returned to its original condition. Retain the two bolts for reuse.

4. Fit the clutch lever clamp provided in the kit, in the orientation shown. Secure with the original fixings. Do not fully tighten the fixings at this stage.



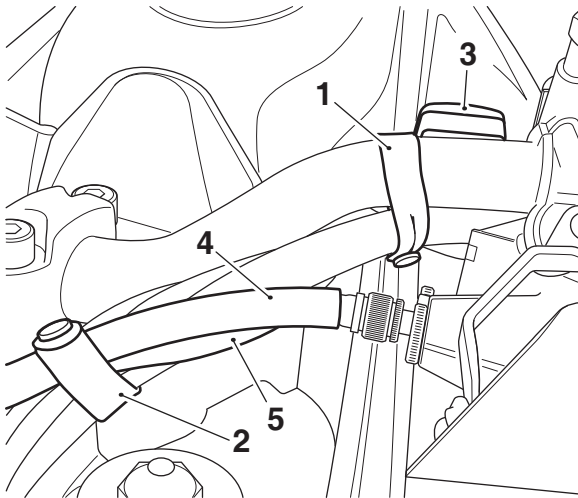
1. Clutch lever clamp
2. Fixings

5. Align the split line of the clutch lever with the alignment mark on the upper surface of the handlebar, then tighten the clamp bolts, upper first, to **12 Nm**.
6. Refit the left hand mirror assembly. Tighten the lock nut to **25 Nm** and slide the rubber boot down the mirror stem to cover the fixing.
7. Position the auxiliary switch and mount plate on the clutch lever clamp. Ensure the peg on the clutch lever clamp locates in the auxiliary switch mount plate, as shown. Secure the auxiliary switch mount plate to the underside of the clutch lever clamp with the M4 x 8 mm screw from the kit. Tighten the screw to **3 Nm**.



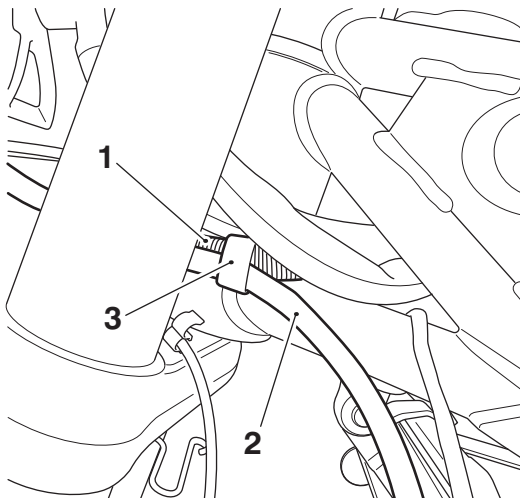
1. Peg, clutch lever clamp
2. Auxiliary switch
3. Auxiliary switch mount plate
4. Screw, M4 x 8 mm

- Following the route of the left hand switch harness, secure the auxiliary switch harness as shown below.



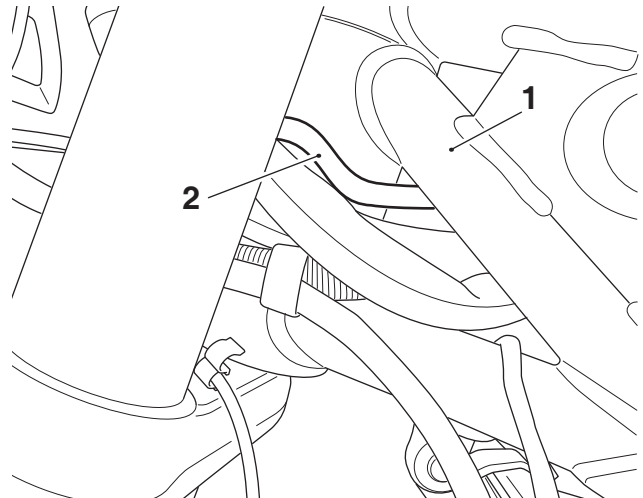
- Rubber strap, auxiliary switch cube kit
- Rubber strap, original
- Auxiliary switch
- Clutch cable
- Auxiliary switch harness

- Collect a rubber strap from the auxiliary switch kit and secure the heated grip switch harness to the main harness as shown below.



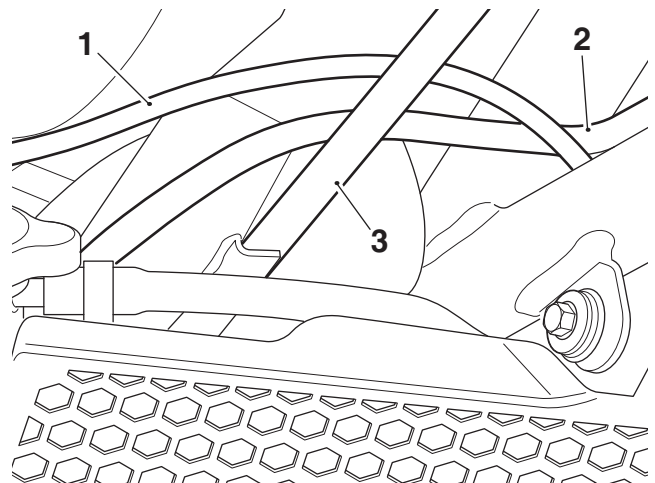
- Main harness
- Heated grip switch harness
- Rubber strap

- Pass the fog light switch harness through the frame, behind the right hand side of the headstock as shown.



- Motorcycle frame
- Fog light switch harness

- Route the fog light switch harness towards the right hand side of the radiator ensuring it is below the brake hose and above the clutch cable, as shown.

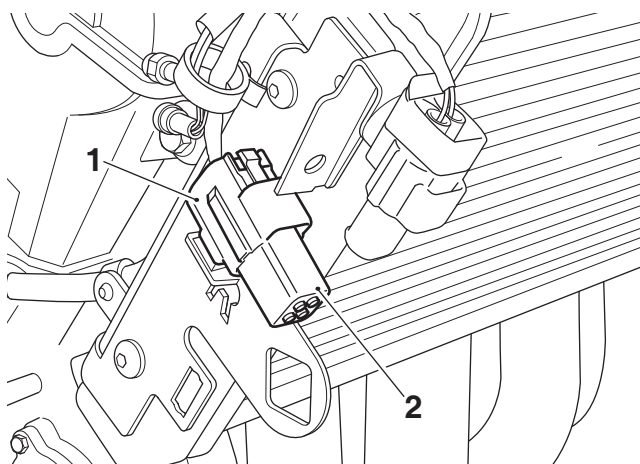


- Fog light switch harness
- Brake hose
- Clutch cable.

! Caution

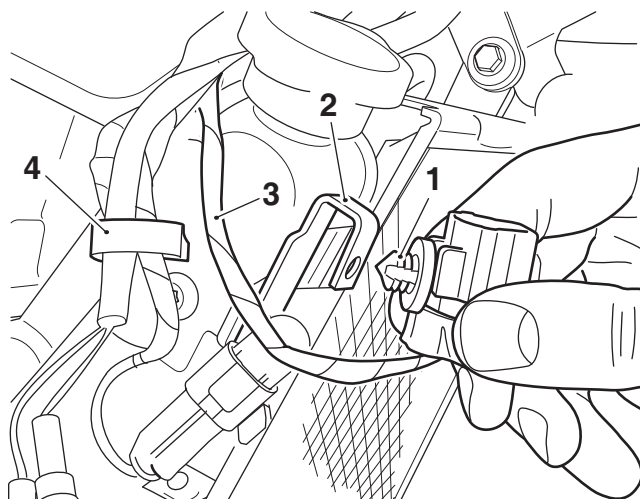
Blanking plugs are fitted to the harness connectors to prevent water ingress. If the blanking plugs are removed for any reason, they should always be refitted. The harness connectors should never be left exposed without the blanking plugs fitted as this may lead to a malfunction, or premature failure of components.

12. If accessory heated grips are not fitted to the motorcycle, locate and release the Omega clip on the right hand side of the radiator. Secure the heated grip section of the auxiliary switch harness using the Omega clip. Do not remove the blanking plug.
13. Identify the fog light switch harness connector on the main wiring harness (located at the right hand side of the radiator) and remove the blanking plug. Retain the blanking plug if the motorcycle is to be returned to its original condition.



1. Fog light switch connector (main harness)
2. Blanking plug (fog light switch)

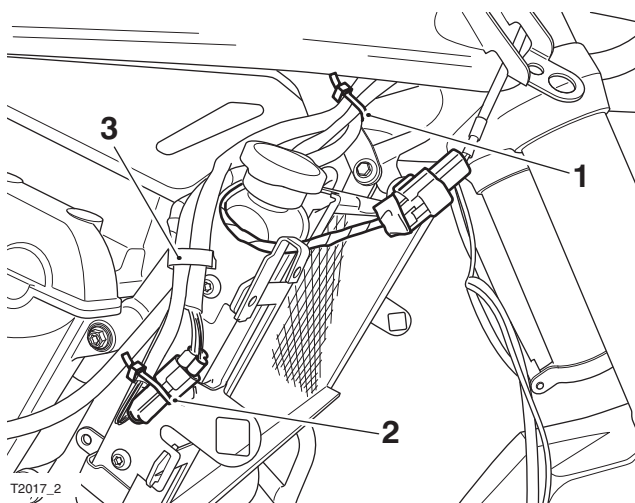
14. Release the main wiring harness fog light switch connector from the right hand radiator bracket and unthread the harness from the Omega clip.



1. Main harness fog light switch connector
2. Radiator bracket (right hand)
3. Harness
4. Omega clip

15. Remove the blanking plug from the fog light auxiliary switch harness connector and connect to the main wiring harness connector. Retain the blanking plug if the motorcycle is to be returned to its original condition.

16. Secure the fog light switch harness and the main harness using the Omega clip removed previously and then cable tie the harness to the connector as shown below.

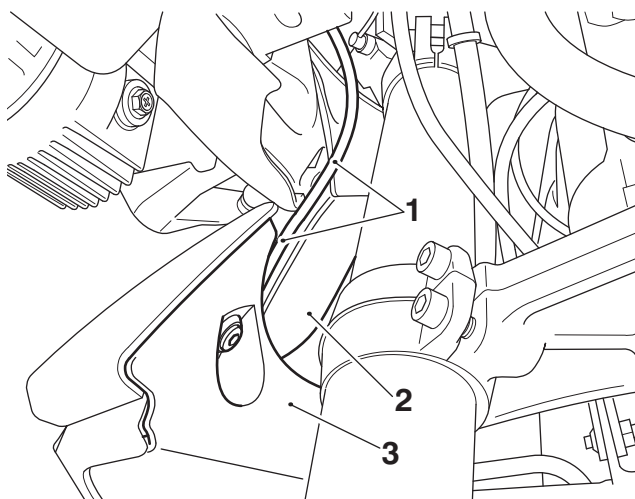


1. Cable tie (fog light switch harness)
2. Cable tie (fog light switch connectors)
3. Omega clip

Warning

Move the handlebars to the left and right full lock while checking that the cables and harness do not bind. A cable or harness that binds will restrict the steering and may cause loss of control and an accident.

17. Refit the upper side panels and the radiator infill panels as described in the Service Manual, taking care to route the fog light harnesses as shown below.



1. Fog light harness route (right hand shown)
2. Radiator infill panel upper
3. Radiator infill panel lower

18. Reconnect the battery, as described in the Service Manual.
19. Refit the rider's seat, as described in the Service Manual.

Fog Light System Testing

Note:

- **Fuse number 3 of the front fuse box protects the fog light circuit. Refer to the label in the fuse box lid for fuse amperage.**
1. Operate the switch and check that the fog lights come on when the switch is illuminated.
 2. Adjust fog lights to the required position and torque the fixings to **3 Nm**. Ensure that the fog light is adjusted so that it does not contact the shroud during operation.

Operation

1. The fog light button on the auxiliary switch has two operating modes and will change colour as described below:
 - OFF - white
 - ON - green.
2. The fog lights will remain on when the engine is turned off using the engine stop switch. When the engine is not running turn off the ignition, or switch the fog lights off from the auxiliary switch, to avoid draining the battery. The auxiliary switch will automatically reset to the OFF position whenever the ignition is switched off.



Warning

If, after fitment of this accessory kit, you have any doubt about the performance of any aspect of the motorcycle, contact an authorised Triumph dealer and do not ride the motorcycle until the authorised dealer has declared it fit for use. Riding a motorcycle when there is any doubt as to any aspect of the performance of the motorcycle may result in loss of control of the motorcycle leading to an accident.



Warning

Never ride an accessory equipped motorcycle at speeds above 80 mph (130 km/h).

The presence of accessories will cause changes in the stability and handling of the motorcycle. Failure to allow for changes in motorcycle stability may lead to loss of control or an accident.

Remember that the 80 mph (130 km/h) limit will be reduced by the fitting of non-approved accessories, incorrect loading, worn tyres, overall motorcycle condition and poor road or weather conditions.



Warning

The motorcycle must not be operated above the legal road speed limit except in closed-course conditions.



Warning

Only operate this Triumph motorcycle at high speed in closed-course, on-road competition or on closed-course racetracks. High-speed operation should only be attempted by riders who have been instructed in the techniques necessary for high speed riding and are familiar with the motorcycle's characteristics in all conditions.

High-speed operation in any other circumstances is dangerous and will lead to loss of motorcycle control and an accident.