



## Accessory Fitting Instructions

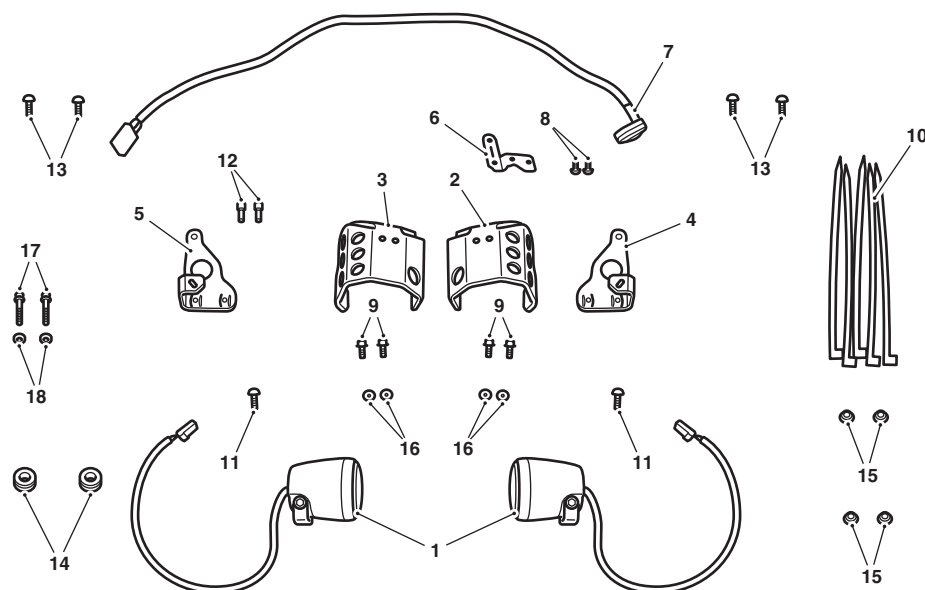
LED Fog Light Kit	
Kit number	Models Affected
A9838021	Tiger XR, Tiger XR <sub>x</sub> , Tiger XC, Tiger XC <sub>x</sub>

Thank you for choosing this Triumph genuine accessory kit. This accessory kit is the product of Triumph's use of proven engineering, exhaustive testing, and continuous striving for superior reliability, safety and performance.

Completely read all of these instructions before commencing the installation of the accessory kit in order to become thoroughly familiar with the kit's features and the installation process.

These instructions should be considered a permanent part of your accessory kit, and should remain with it even if your accessory equipped motorcycle is subsequently sold.

### Parts supplied



1. Fog light, LED	2 off	10. Cable tie	5 off
2. Shroud, left hand	1 off	11. Bolt, M6 x 25 mm	2 off
3. Shroud, right hand	1 off	12. Bolt, M6 x 16 mm	2 off
4. Bracket, left hand	1 off	13. Screw, M5 x 16 mm	4 off
5. Bracket, right hand	1 off	14. Grommet	2 off
6. Bracket, switch	1 off	15. Flanged sleeve, 6.4 x 11 x 2.75 mm	4 off
7. Switch, fog light	1 off	16. Washer, M5	4 off
8. Screw, M4 x 5 mm	2 off	17. Bolt, M6 x 35 mm	2 off
9. Screw, M5 x 12 mm	4 off	18. Spacer, 6.3 x 10 x 8 mm	2 off



### Warning

This accessory kit is designed for use on Triumph Tiger XR, Tiger XRx, Tiger XC, Tiger XCx motorcycles only and should not be fitted to any other Triumph model or to any other manufacturer's motorcycle. Fitting this accessory kit to any other Triumph model or to any other manufacturer's motorcycle, may interfere with the rider and could affect the stability and handling of the motorcycle, leading to loss of control and an accident.



### Warning

Always have Triumph approved parts, accessories and conversions fitted by a trained technician of an authorised Triumph dealer. The fitment of parts, accessories and conversions by a technician who is not of an authorised Triumph dealer may affect the handling, stability or other aspects of the motorcycle's operation which may result in loss of motorcycle control and an accident.



### Warning

Always ensure that the newly installed wiring does not chafe against other parts of the motorcycle such that it may be rubbed through and cause an electrical problem. In addition, always ensure that the newly installed wiring will not restrict steering movement. Both conditions are hazardous and could give rise to a dangerous riding condition resulting in a fire, loss of motorcycle control and an accident.



### Warning

Throughout this operation, ensure that the motorcycle is stabilised and adequately supported to prevent risk of injury from the motorcycle falling.



### Warning

A torque wrench of known accurate calibration must be used when fitting this accessory kit. Failure to tighten any of the fasteners to the correct torque specification may affect motorcycle performance, handling and stability. This may result in loss of motorcycle control and an accident.

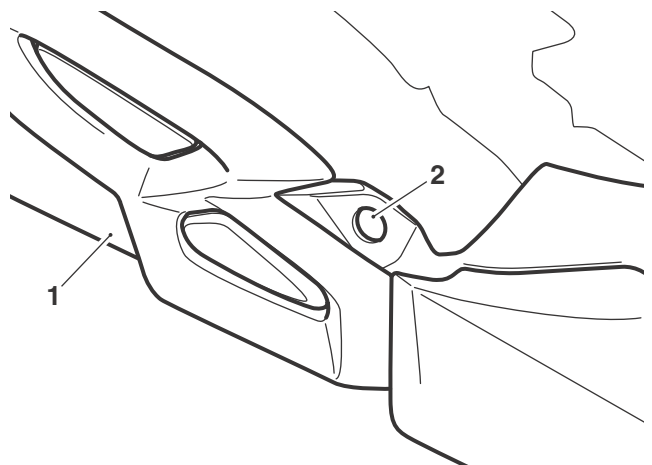
#### Note:

- Triumph offers a broad range of approved genuine accessories for your motorcycle. We cannot therefore cover all possible equipment variations in these instructions. For removal and installation of Triumph Genuine Accessories always refer to the instructions supplied with the respective accessory kit. To obtain additional copies of any Triumph accessory instructions, visit [www.triumphinstructions.com](http://www.triumphinstructions.com) or contact your authorised Triumph dealer.

1. Remove the rider's seat as described in the Service Manual.
2. Disconnect the battery, negative (black) lead first.
3. Remove the cockpit assembly as described in the Service Manual.
4. Remove the upper side panels and the radiator infill panels as described in the Service Manual.

#### Fog Light Bracket Fitment

1. Drill out the front hole in both cockpit panels to 12 mm diameter, to allow fitment of the flanged sleeves.

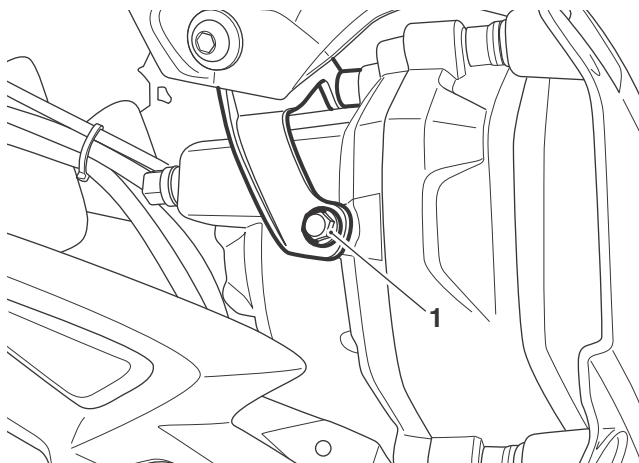


1. Cockpit panel

2. Front hole - drill out to 12 mm

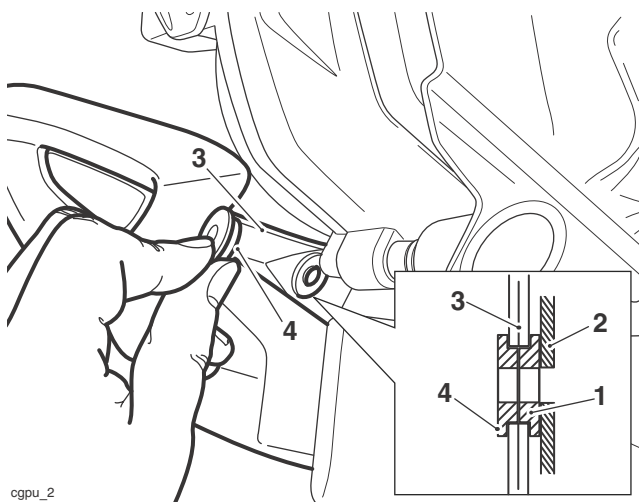
2. From the inside, fit a flanged sleeve to the two 12 mm holes drilled through cockpit panel at the previous step.
3. Refit the cockpit panels, ensuring the flanged sleeves remain in position. Do not fit the front hole fixing at this stage.

- Remove the windscreen bracket lower fixings from the headlight. Retain the fixings if the motorcycle is to be returned to its original condition.



**1. Windscreen bracket lower fixing**

- Insert a second flanged sleeve into the outside of the 12 mm hole in the right hand cockpit panel.



cgpu\_2

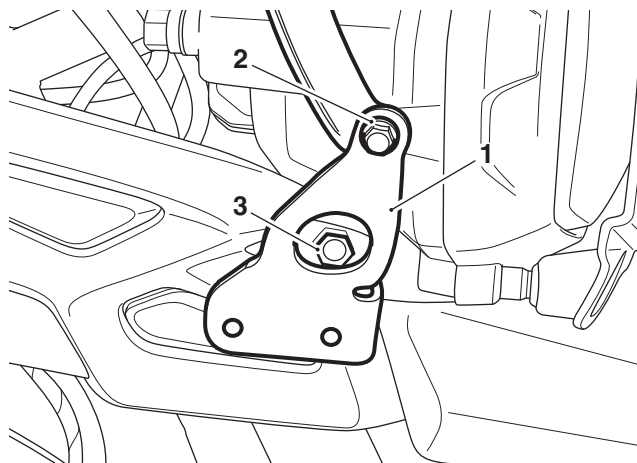
- Flanged sleeve (inner)
- Front subframe
- Cockpit panel
- Flanged sleeve (outer)

- Attach the right hand fog light bracket at the headlight using an M6 x 16 mm bolt. Do not tighten the fixing at this stage.

**Note:**

- Lock nuts can be reused, providing resistance can be felt when the locking portion passes over the thread of the bolt or stud.
- Always use the correct replacement lock nut as recommended in the Triumph parts catalogue.

- Attach the right hand fog light bracket to the front subframe panel through the flanged sleeve using an M6 x 25 mm bolt, and reusing the original lock nut.



**1. Fog light bracket**

**2. Upper bolt, M6 x 16 mm**

**3. Lower bolt, M6 x 25 mm**

- Tighten the upper bolt to **4 Nm** and lower bolt to **9 Nm**.

- Repeat steps 4 to 8 for the left hand bracket.

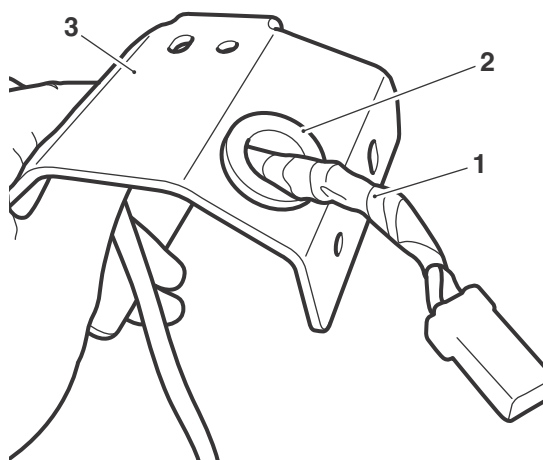
**Fog Light Fitment**



**Caution**

Do not allow the fog light to hang unsupported from the harness during installation. Allowing the fog light to hang from the harness will cause damage to the fog light.

- Fit a grommet on to the right hand fog light harness.
- Fit the grommet through the cable hole in the right hand shroud.

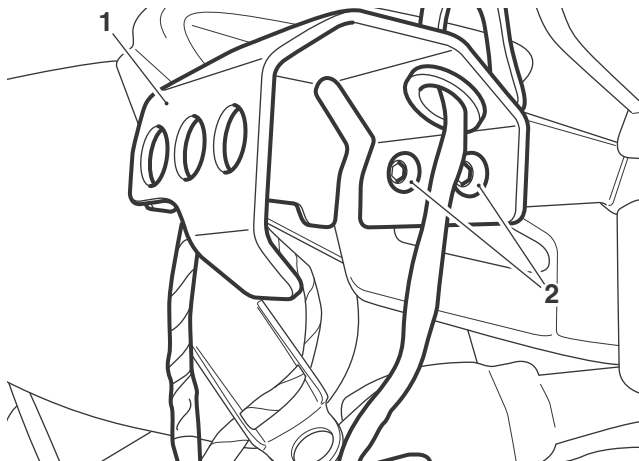


**1. Fog light harness (right hand shown)**

**2. Grommet**

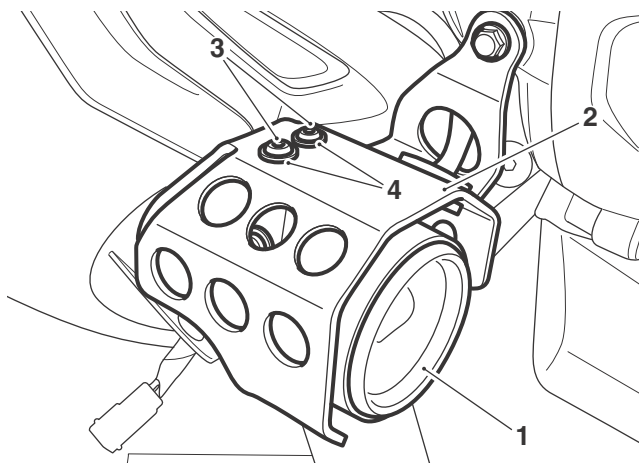
**3. Shroud**

3. Attach the shroud to the right hand fog light bracket using the M5 x 16 mm screws. Do not tighten the fixings at this stage.



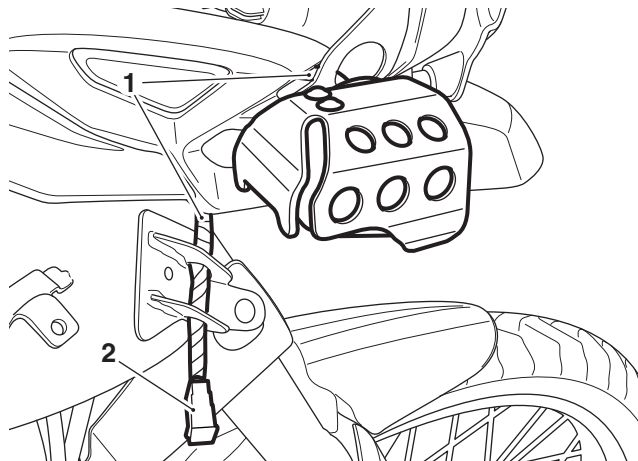
1. Shroud (right hand shown)
2. M5 x 16 mm screws

4. Adjust the shroud until it is horizontal and tighten the screws to **6 Nm**.
5. Fit the right hand fog light to the shroud using two M5 x 12 mm screws and M5 washers from the kit. Do not tighten the fixings at this stage.



1. Fog light (right hand shown)
2. Shroud
3. M5 x 12 mm screws
4. Washers

6. Route the fog light cable through the mounting bracket, around the cockpit moulding, under the fuel tank front bracket.

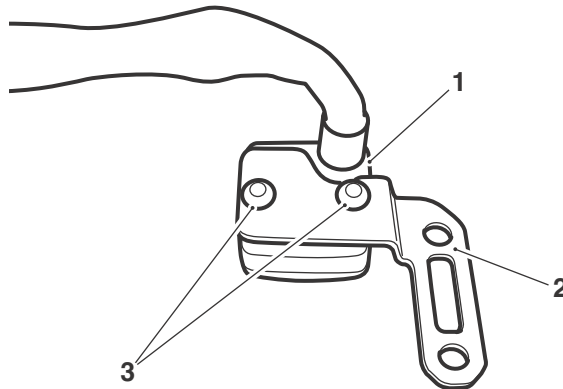


1. Fog light harness (right hand shown)
2. Fog light harness connector

7. Repeat steps 1 to 6 for the left hand fog light and shroud, ensuring the left hand shroud aligns to the right hand shroud.

### Switch Fitment

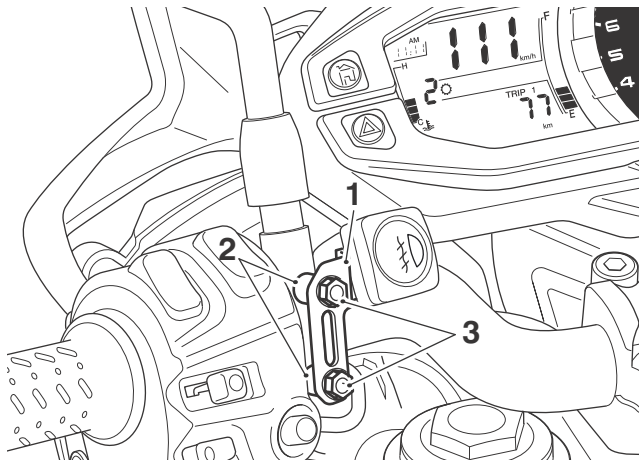
1. Align the fog light switch to the switch bracket and secure with the two M4 x 5 mm screws. Tighten to **3 Nm**.



1. Switch
2. Switch bracket
3. M4 x 5 mm screws

2. Support the clutch lever assembly and remove the two bolts. Retain the two bolts if the motorcycle is to be returned to its original condition. Retain the clamp for reuse.

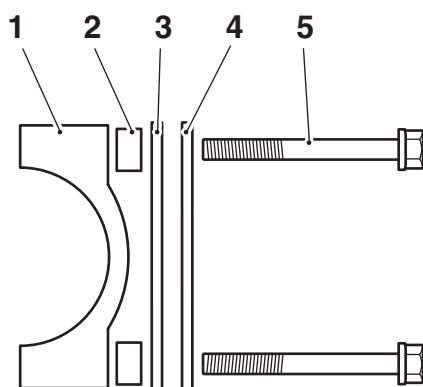
- Refit the clutch lever clamp ('UP' arrow pointing upwards), and install the two spacers and switch bracket. Secure with M6 x 35 mm bolts from the kit.



- Fog light switch bracket
- Spacers
- M6 x 35 mm bolts

**Note:**

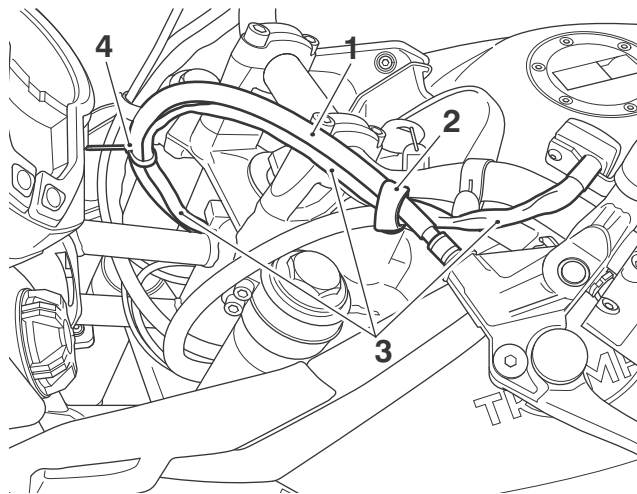
- If the Triumph heated grip kit is fitted with the fog light kit, the fog light switch bracket must be fitted before the heated grip switch bracket to ensure correct switch positioning.



- Clutch lever clamp
- Spacer
- Fog light switch bracket
- Heated grip switch bracket
- Bolt

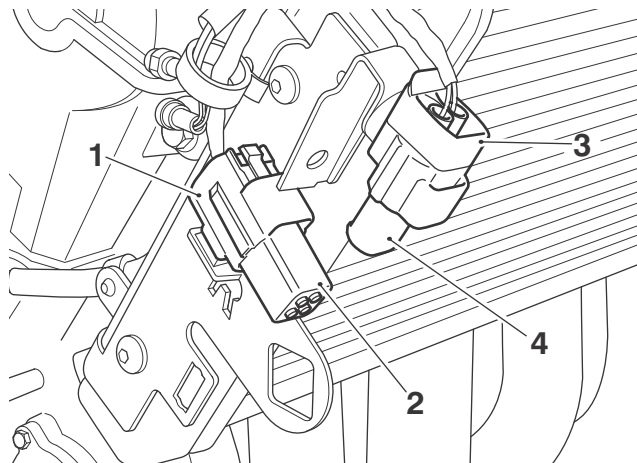
- Align the split line of the clutch lever with the '+' mark on the upper surface of the handlebar, then tighten the clamp bolts, upper first, to 12 Nm.

- Following the clutch cable, route the switch harness through to the right hand radiator cowling. Secure the harness to the clutch cable using a cable tie provided in the kit.



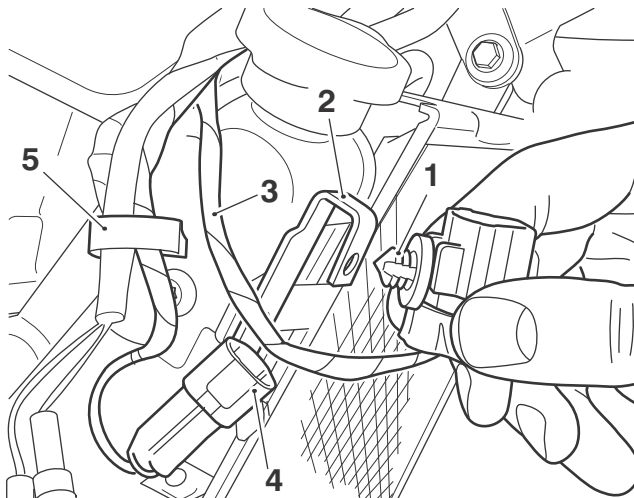
- Clutch cable
- Rubber strap
- Fog light switch harness
- Cable tie

- Identify the fog light switch harness connector and the right hand fog light connector on the main wiring harness (located at the right hand side of the radiator), remove the blanking plugs. Retain the blanking plugs if the motorcycle is to be returned to its original condition.



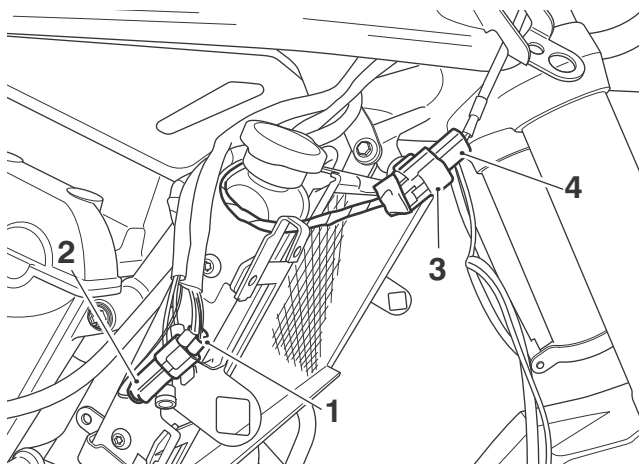
- Fog light switch connector (main harness)
- Blanking plug (fog light switch)
- Right hand fog light connector (main harness)
- Blanking plug (right hand fog light)

7. Release the right hand fog light harness connector and the fog light switch connector from the right hand radiator bracket, release the omega clip and unthread the fog light harness.



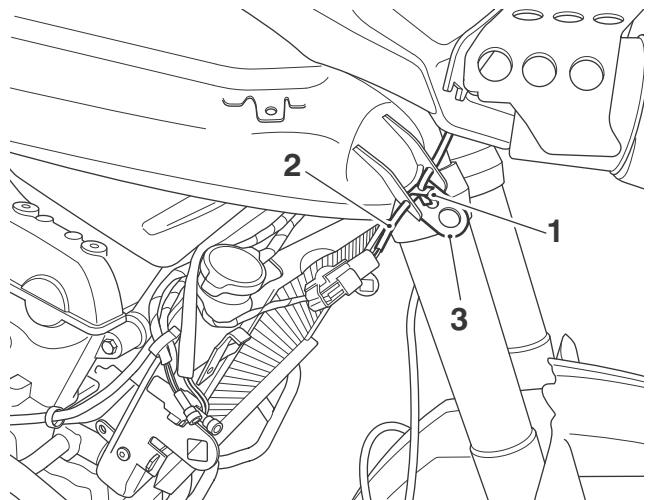
1. Right hand fog light harness connector
2. Radiator bracket (right hand)
3. Harness
4. Fog light switch harness connector
5. Omega clip

8. Fit both harness connectors as follows:
  - Connect the fog light switch connector to the main harness connector.
  - Connect the right hand fog light connector to the main harness connector.



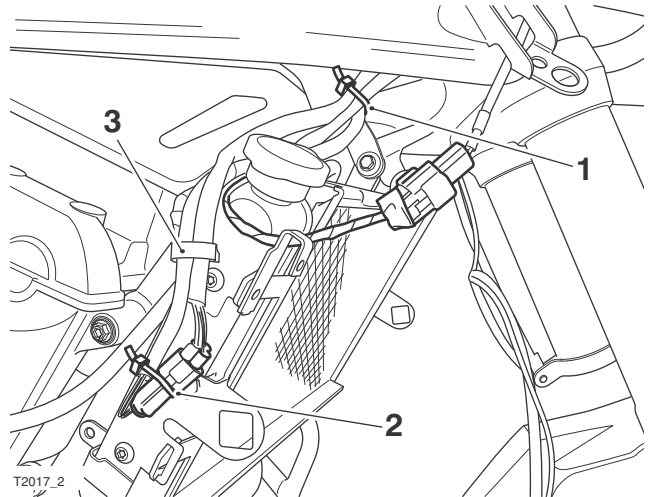
1. Connector (fog light switch harness)
2. Fog light switch connector (main harness)
3. Connector (right hand fog light harness)
4. Right hand fog light connector

9. Route the fog light harness along the edge of the fuel tank flange, securing with a cable tie to the upper bracket as you do so.



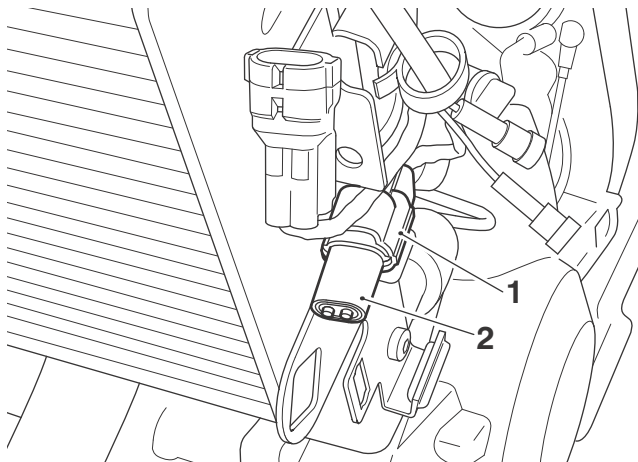
1. Cable tie
2. Fog light harness
3. Fuel tank bracket

10. Route the fog light switch harness to the front of the coolant expansion tank and secure using a cable tie.
11. Secure the fog light switch harness and the main harness using the omega clip removed previously and then cable tie the harness to the connector as shown below.



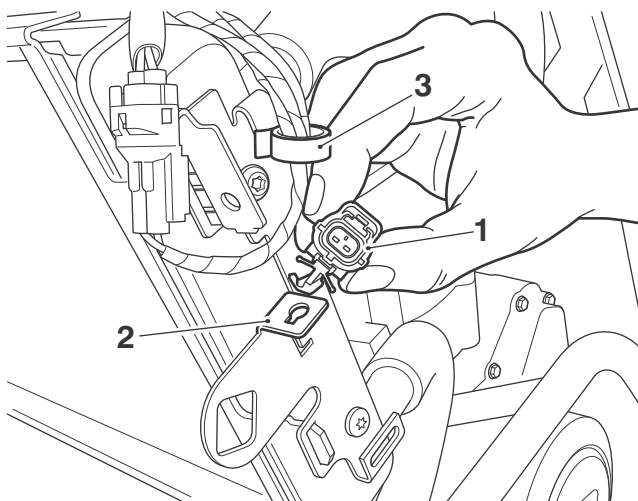
1. Cable tie (fog light switch harness)
2. Cable tie (fog light switch connectors)
3. Omega clip

12. Identify the connector on the main wiring harness (located at the left hand side of the radiator) and remove the blanking plug. Retain the blanking plug if the motorcycle is to be returned to its original condition.



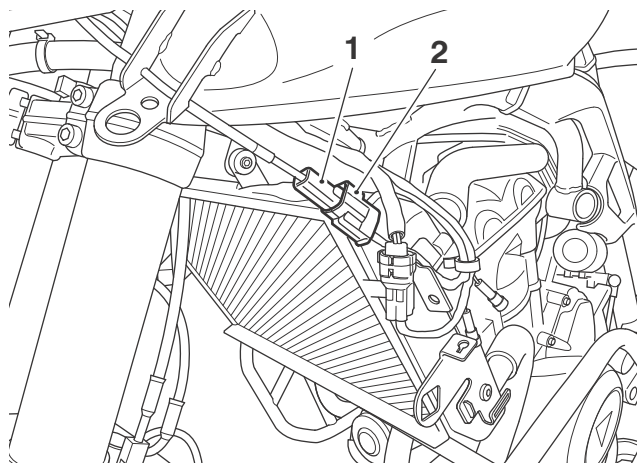
1. Left hand fog light connector (main harness)  
2. Blanking plug (left hand fog light)

13. Release the left hand fog light harness connector from the left hand radiator bracket and then unthread the harness from the omega clip.



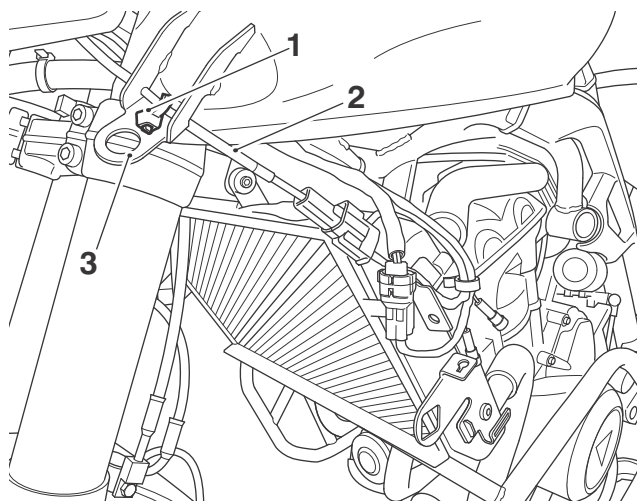
1. Left hand fog light harness connector  
2. Radiator bracket (left hand)  
3. Omega clip

14. Connect the left hand fog light connector to the corresponding connector on the wiring harness.



1. Connector (left hand fog light)  
2. Connector (main harness)

15. Route the fog light harness along the edge of the fuel tank flange, securing with a cable tie to the upper bracket as you do so.



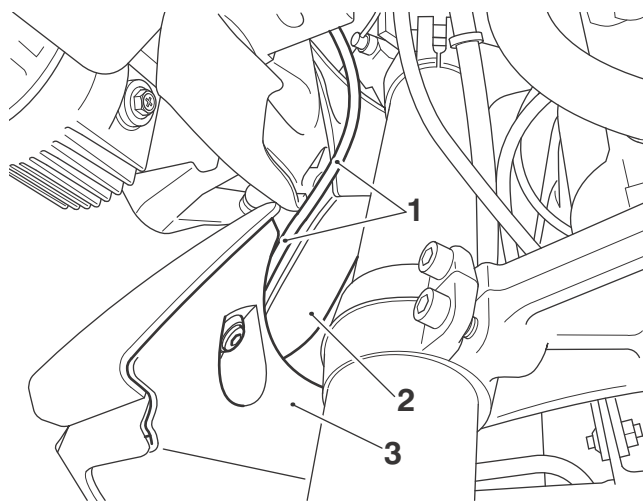
1. Cable tie  
2. Fog light harness  
3. Fuel tank bracket



### Warning

Move the handlebars to the left and right full lock while checking that the cables and harness do not bind. A cable or harness that binds will restrict the steering and may cause loss of control and an accident.

16. Refit the upper side panels and the radiator infill panels as described in the Service Manual, taking care to route the fog light harness as shown below.



1. Fog light harness route (right hand shown)
  2. Radiator infill panel upper
  3. Radiator infill panel lower
17. Reconnect the battery, positive (red) lead first and tighten the battery terminals to **4.5 Nm**.
  18. Refit the rider's seat, as described in the Service Manual.

### Fog Light System Testing

#### Note:

- **Fuse number 3 of the front fuse box protects the fog light circuit. Refer to the label in the fuse box lid for fuse amperage.**
1. Run the engine to avoid draining the battery.
  2. Operate the switch and check that the fog lights come on when the switch is illuminated.
  3. Adjust fog lights to the required position and torque the fixings to **3 Nm**. Ensure that the fog light is adjusted so that it does not contact the shroud during operation.

### Operation

1. The fog light switch has two operating modes and will change colour as described below:
  - OFF - white
  - ON - green.
2. The switch will automatically reset to the OFF position whenever the engine is started or stopped.



#### Warning

If, after fitment of this accessory kit, you have any doubt about the performance of any aspect of the motorcycle, contact an authorised Triumph dealer and do not ride the motorcycle until the authorised dealer has declared it fit for use. Riding a motorcycle when there is any doubt as to any aspect of the performance of the motorcycle may result in loss of control of the motorcycle leading to an accident.



#### Warning

Never ride an accessory equipped motorcycle at speeds above 80 mph (130 km/h).

The presence of accessories will cause changes in the stability and handling of the motorcycle. Failure to allow for changes in motorcycle stability may lead to loss of control or an accident.

Remember that the 80 mph (130 km/h) limit will be reduced by the fitting of non-approved accessories, incorrect loading, worn tyres, overall motorcycle condition and poor road or weather conditions.



#### Warning

The motorcycle must not be operated above the legal road speed limit except in closed-course conditions.



#### Warning

Only operate this Triumph motorcycle at high speed in closed-course, on-road competition or on closed-course racetracks. High-speed operation should only be attempted by riders who have been instructed in the techniques necessary for high speed riding and are familiar with the motorcycle's characteristics in all conditions.

High-speed operation in any other circumstances is dangerous and will lead to loss of motorcycle control and an accident.