



## Accessory Fitting Instructions

LED Fog Light Kit	
<b>Kit number</b>	<b>Models Affected</b>
A9838020	Explorer XR, Explorer XR <sub>x</sub> , Explorer XR <sub>T</sub> , Explorer XC, Explorer XC <sub>x</sub>
<b>To be fitted with</b>	
Auxiliary Switch Kit	
<b>Kit number</b>	<b>Models Affected</b>
A9638173	Explorer XR, Explorer XC

**Note:**

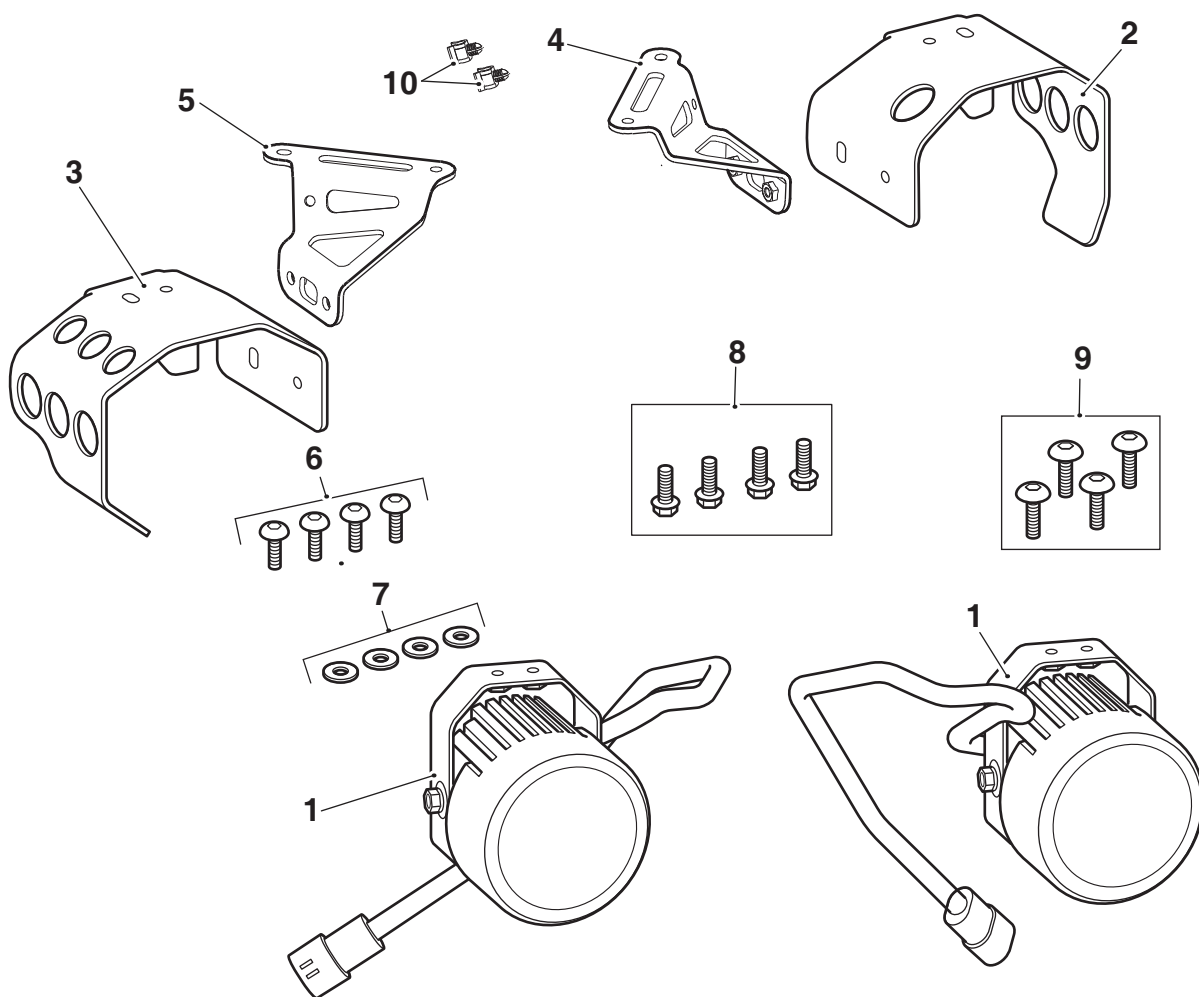
- **The LED fog light kit A9838020 can only be fitted to Explorer XR and Explorer XC models when used together with the auxiliary switch kit A9638173. If heated grips are fitted to Explorer XR and Explorer XC models, the auxiliary switch will already be installed.**

Thank you for choosing this Triumph genuine accessory kit. This accessory kit is the product of Triumph's use of proven engineering, exhaustive testing, and continuous striving for superior reliability, safety and performance.

Completely read all of these instructions before commencing the installation of the accessory kit in order to become thoroughly familiar with the kit's features and the installation process.

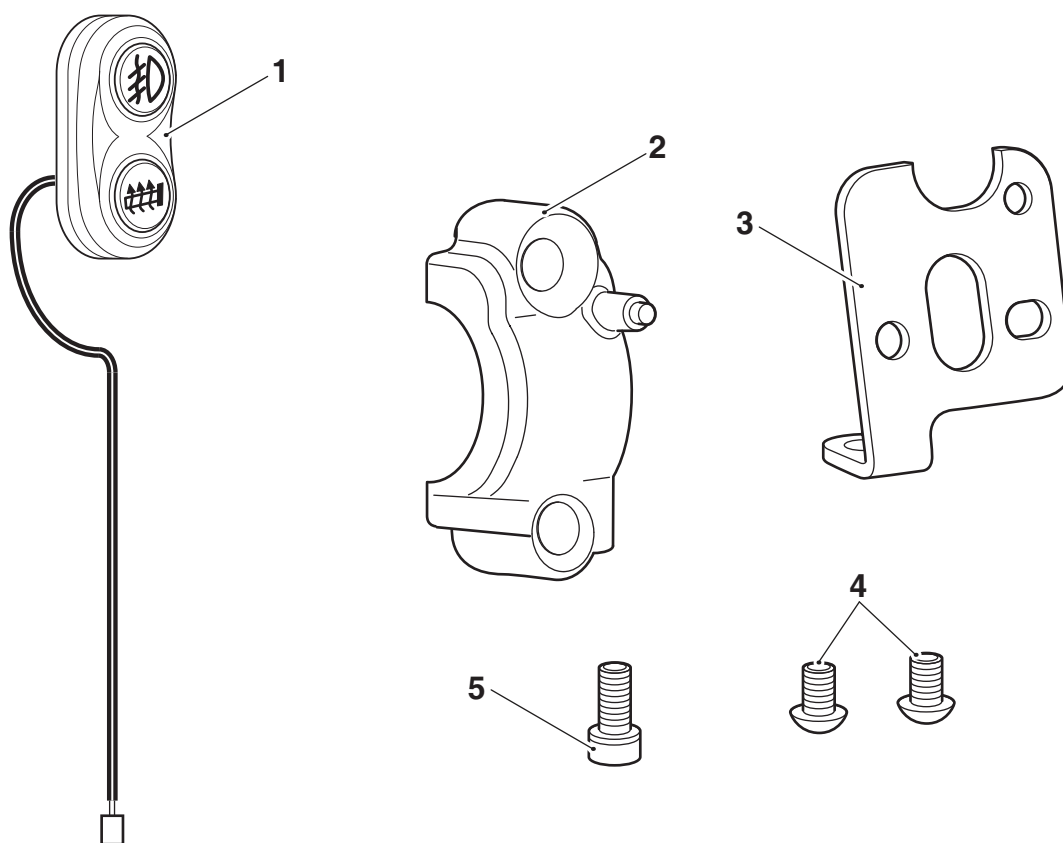
These instructions should be considered a permanent part of your accessory kit, and should remain with it even if your accessory equipped motorcycle is subsequently sold.

Parts supplied: A9838020



1.	Fog light, LED	2 off	6.	Screw, M5 x 12 mm	4 off
2.	Shroud, left hand	1 off	7.	Washer, M5	4 off
3.	Shroud, right hand	1 off	8.	Bolt, M6 x 20 mm	4 off
4.	Bracket, left hand	1 off	9.	Screw, M5 x 14 mm	4 off
5.	Bracket, right hand	1 off	10.	Cable clip	2 off

Parts supplied: A9638173



1. Auxiliary switch	1 off	4. Screw, M4 x 5 mm	2 off
2. Clamp, clutch lever	1 off	5. Screw, M4 x 8 mm	1 off
3. Mount plate	1 off		

**Warning**

The accessory kits covered in this instruction are designed for use on specific models of Triumph motorcycle. The accessory kits and the models applicable are listed at the start of the instruction. They should not be fitted to any other Triumph model or to any other manufacturer's motorcycle. Fitting an accessory kit to a Triumph model not listed, or to any other manufacturer's motorcycle will affect the performance, stability and handling of the motorcycle. This may affect the rider's ability to control the motorcycle and could cause an accident.

**Warning**

Always have Triumph approved parts, accessories and conversions fitted by a trained technician of an authorised Triumph dealer. The fitment of parts, accessories and conversions by a technician who is not of an authorised Triumph dealer may affect the handling, stability or other aspects of the motorcycle's operation which may result in loss of motorcycle control and an accident.

**Warning**

Always ensure that the newly installed wiring does not chafe against other parts of the motorcycle such that it may be rubbed through and cause an electrical problem. In addition, always ensure that the newly installed wiring will not restrict steering movement. Both conditions are hazardous and could give rise to a dangerous riding condition resulting in a fire, loss of motorcycle control and an accident.

**Warning**

Throughout this operation, ensure that the motorcycle is stabilised and adequately supported to prevent risk of injury from the motorcycle falling.

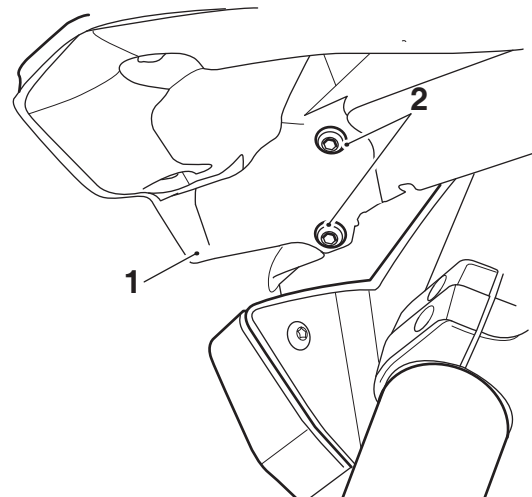
**Warning**

A torque wrench of known accurate calibration must be used when fitting this accessory kit. Failure to tighten any of the fasteners to the correct torque specification may affect motorcycle performance, handling and stability. This may result in loss of motorcycle control and an accident.

**Note:**

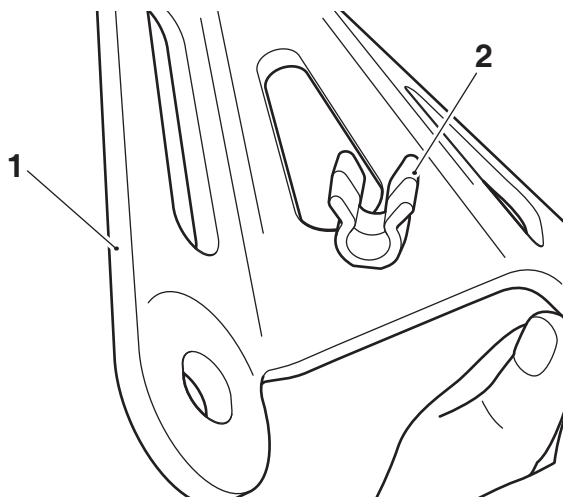
- Triumph offers a broad range of approved genuine accessories for your motorcycle. We cannot therefore cover all possible equipment variations in these instructions. For removal and installation of Triumph Genuine Accessories always refer to the instructions supplied with the respective accessory kit. To obtain additional copies of any Triumph accessory instructions, visit [www.triumphinstructions.com](http://www.triumphinstructions.com) or contact your authorised Triumph dealer.

- Remove the rider's seat as described in the Service Manual.
- Disconnect the battery, negative (black) lead first.
- Remove the two fixings from the right hand side front bodywork panel. Retain the fixings for reuse if the motorcycle is to be returned to its original condition.



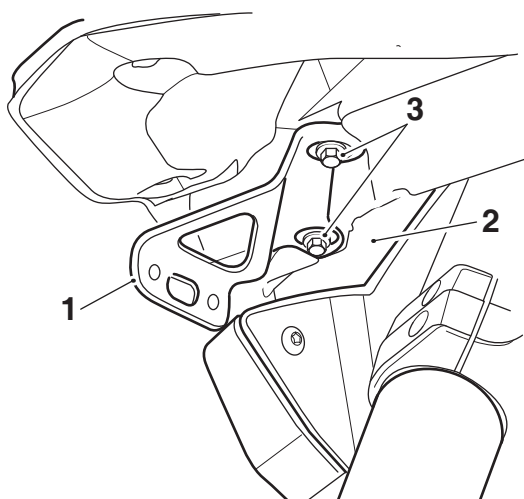
1. Front bodywork panel
2. Fixings

- Attach a cable clip provided in the kit to the right hand mounting bracket from the kit.



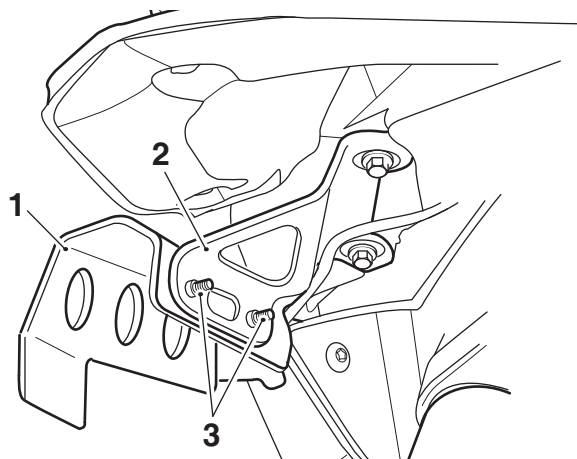
- Mounting bracket, right hand
- Cable clip

- Locate the right hand mounting bracket on the front right hand body panel and align the fixing holes. Fit two M6 x 20 fixings from the kit and tighten to **5 Nm**.



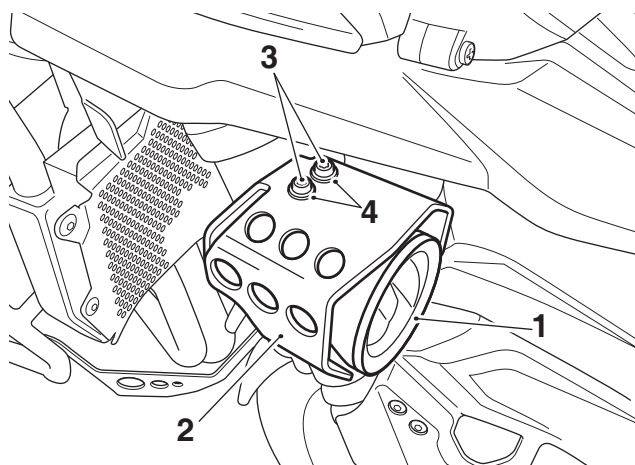
- Mounting bracket, right hand
- Front body panel, right hand
- Fixings, M6 x 20 mm

- Attach the right hand shroud from the kit to the right hand mounting bracket using two of the M5 x 14 mm screws from the kit. Do not tighten the fixings at this stage.



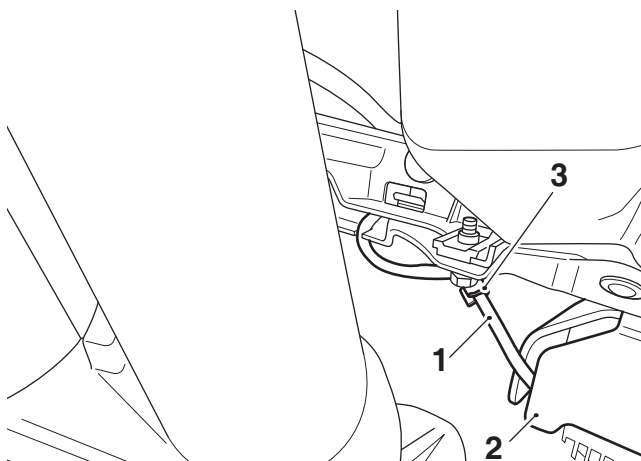
- Shroud, right hand
- Mounting bracket, right hand
- M5 x 14 mm screws

- Adjust the shroud until it is horizontal and tighten the screws to **6 Nm**.
- Fit the right hand fog light to the shroud using two M5 x 12 mm screws and M5 washers from the kit. Do not tighten the fixings at this stage.



- Fog light (right hand shown)
- Shroud (right hand shown)
- M5 x 12 mm screws
- Washers

- Route the fog light cable through the shroud and attach the cable to the cable clip on the bracket.



- Fog light harness (right hand shown)
- Shroud
- Cable clip

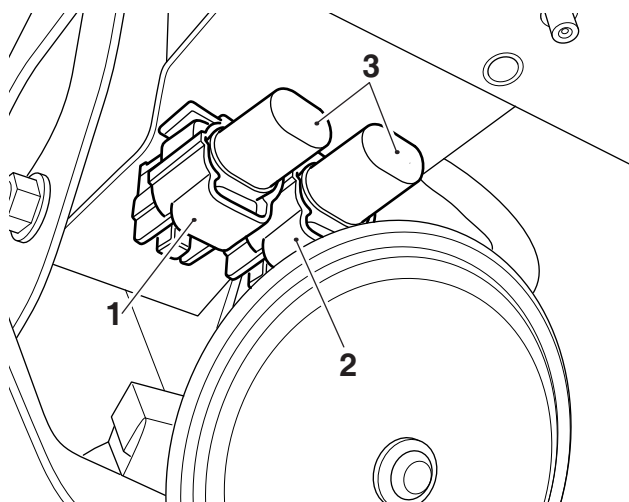
- Route the fog light harness through the body work to the sub-frame area above the horn.



### Caution

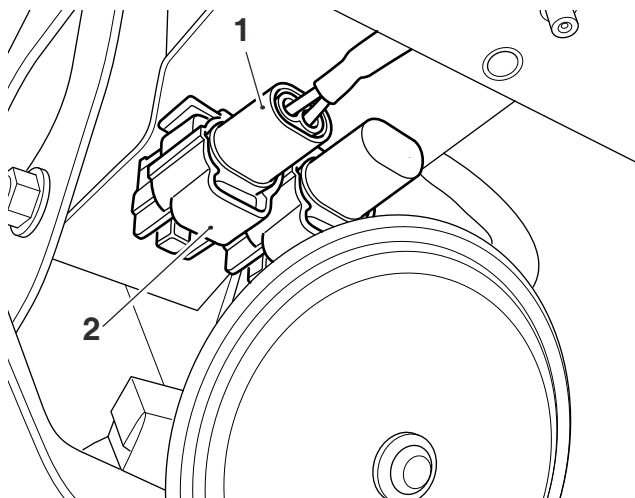
Blanking plugs are fitted to the harness connectors to prevent water ingress. If the blanking plugs are removed for any reason, they should always be refitted. The harness connectors should never be left exposed without the blanking plugs fitted as this may lead to a malfunction, or premature failure of components.

- Locate the fog light main harness connectors located on the sub-frame, above the horn. Remove the blanking plug from the right hand connector. Retain the blanking plug for reuse if the motorcycle is to be returned to its original condition.



- Main harness fog light connector, right hand
- Main harness fog light connector, left hand
- Blanking plugs

- Connect the right hand fog light harness connector to the right hand main harness connector, as shown.



- Fog light harness connector, right hand
- Main harness connector, right hand

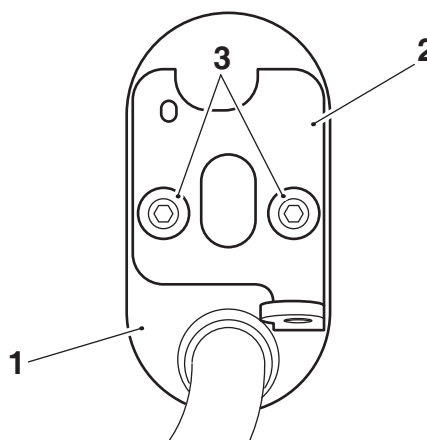
- Repeat steps 3 to 12 for the left hand side, ensuring the left hand shroud aligns to the right hand shroud.

#### Note:

- For Explorer XR and Explorer XC models only. If heated grips are not fitted to the motorcycle, continue from step 14, Auxiliary Switch Fitment. If heated grips are fitted to the motorcycle, continue from step 23.
- For Explorer XR<sub>x</sub>, Explorer XR<sub>T</sub> and Explorer XC<sub>x</sub> models continue from step 23.

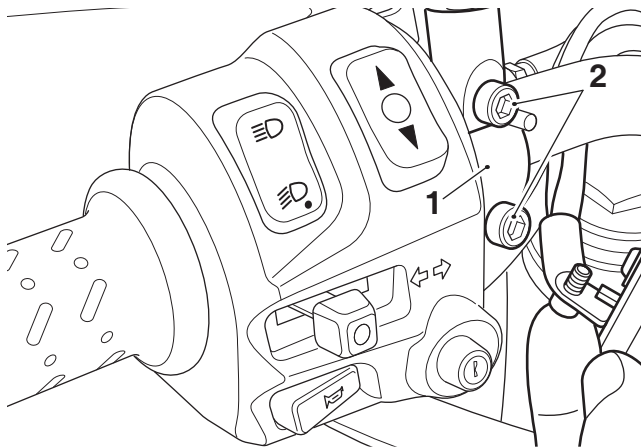
### Auxiliary Switch Fitment

- Align the auxiliary switch on the switch mount plate, as shown and secure with the two M4 x 5 mm screws. Tighten the screws to 3 Nm.



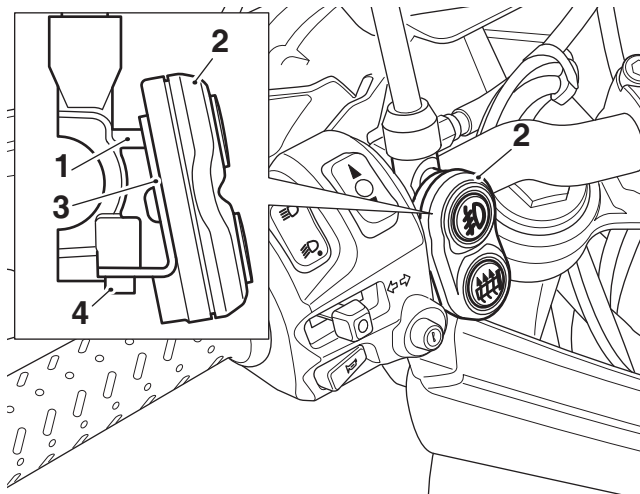
- Auxiliary switch
- Switch mount plate
- M4 x 5 mm screws

15. Support the clutch lever assembly and remove the two bolts. Retain the clamp if the motorcycle is to be returned to its original condition. Retain the two bolts for reuse.
16. Fit the clutch lever clamp provided in the kit, in the orientation shown. Secure with the original fixings. Do not fully tighten the fixings at this stage.



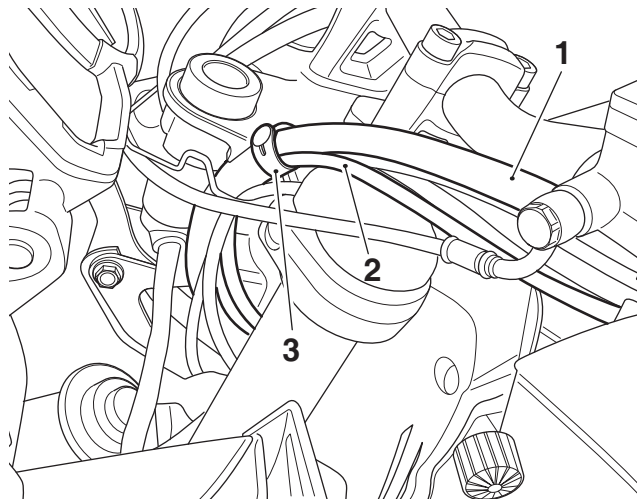
1. Clutch lever clamp
2. Fixings

17. Align the split line of the clutch lever with the alignment mark on the upper surface of the handlebar, then tighten the clamp bolts, upper first, to **12 Nm**.
18. Position the auxiliary switch and mount plate on the clutch lever clamp. Ensure the peg on the clutch lever clamp locates in the auxiliary switch mount plate, as shown. Secure the auxiliary switch mount plate to the underside of the clutch lever clamp with the M4 x 8 mm screw from the kit. Tighten the screw to **3 Nm**.



1. Peg, clutch lever clamp
2. Auxiliary switch
3. Auxiliary switch mount plate
4. Screw, M4 x 8 mm

19. Following the route of the left hand switch harness, secure the auxiliary switch harness to the main harness using the original rubber strap, as shown.



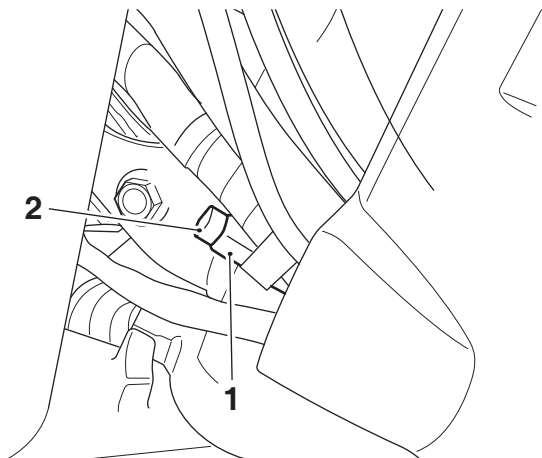
1. Main harness
2. Auxiliary switch harness
3. Rubber strap

20. Route the auxiliary switch harness to the left hand side of the headstock.

### Caution

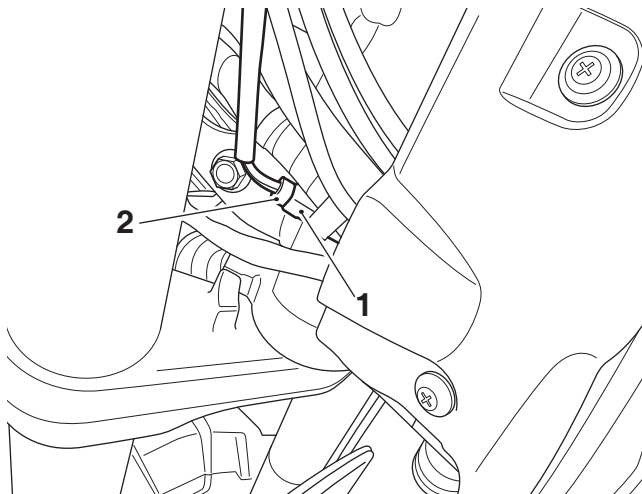
Blanking plugs are fitted to the harness connectors to prevent water ingress. If the blanking plugs are removed for any reason, they should always be refitted. The harness connectors should never be left exposed without the blanking plugs fitted as this may lead to a malfunction, or premature failure of components.

21. Identify the auxiliary switch harness connector on the main wiring harness (located at the left hand side of the headstock) and remove the blanking plug. Retain the blanking plug for reuse if the motorcycle is to be returned to its original condition.



1. Auxiliary switch connector (main harness)
2. Blanking plug

22. Connect the auxiliary switch harness connector to the main wiring harness connector.



1. Auxiliary switch connector (main harness)
2. Auxiliary switch connector (auxiliary switch harness)



### Warning

Move the handlebars to the left and right full lock while checking that the cables and harness do not bind. A cable or harness that binds will restrict the steering and may cause loss of control and an accident.

23. Reconnect the battery, positive (red) lead first and tighten the battery terminals to **4.5 Nm**.
24. Refit the rider's seat, as described in the Service Manual.

## Fog Light System Testing

### Note:

- The fog lights switch will only operate when the headlights are on.
- The fog lights switch will reset to OFF when the ignition is turned off, then on again.
- To turn the fog lights ON or OFF, with the headlights on, press and release the fog lights switch. When the fog lights are turned on the fog light indicator will illuminate in the tachometer.

1. Operate the fog lights switch and check that the fog lights come on.
2. Adjust fog lights to the required position and torque the fixings to **3 Nm**. Ensure that the fog lights are adjusted so that they do not contact the shrouds during operation.

## Operation

The fog lights will remain on when the engine is turned off using the engine stop switch. When the engine is not running turn off the ignition, or switch the fog lights off from the auxiliary switch, to avoid draining the battery.

The auxiliary switch will automatically reset to the OFF position whenever the ignition is switched off.

The fog lights are protected by a chassis ECM which will automatically cut power in the event of an overload.

Power can be restored to the fog lights by turning the ignition switch off, then on again, provided that the condition that caused the fault has been rectified.

In the event of a more serious overload, fuse number PS 3 protects the fog lights. Refer to the label in the fuse box lid for fuse amperage.





### Warning

If, after fitment of this accessory kit, you have any doubt about the performance of any aspect of the motorcycle, contact an authorised Triumph dealer and do not ride the motorcycle until the authorised dealer has declared it fit for use. Riding a motorcycle when there is any doubt as to any aspect of the performance of the motorcycle may result in loss of control of the motorcycle leading to an accident.



### Warning

Never ride an accessory equipped motorcycle at speeds above 80 mph (130 km/h).

The presence of accessories will cause changes in the stability and handling of the motorcycle. Failure to allow for changes in motorcycle stability may lead to loss of control or an accident.

Remember that the 80 mph (130 km/h) limit will be reduced by the fitting of non-approved accessories, incorrect loading, worn tyres, overall motorcycle condition and poor road or weather conditions.



### Warning

The motorcycle must not be operated above the legal road speed limit except in closed-course conditions.



### Warning

Only operate this Triumph motorcycle at high speed in closed-course, on-road competition or on closed-course racetracks. High-speed operation should only be attempted by riders who have been instructed in the techniques necessary for high-speed riding and are familiar with the motorcycle's characteristics in all conditions.

High-speed operation in any other circumstances is dangerous and will lead to loss of motorcycle control and an accident.