

English

Fitting Instructions:

America and Speedmaster

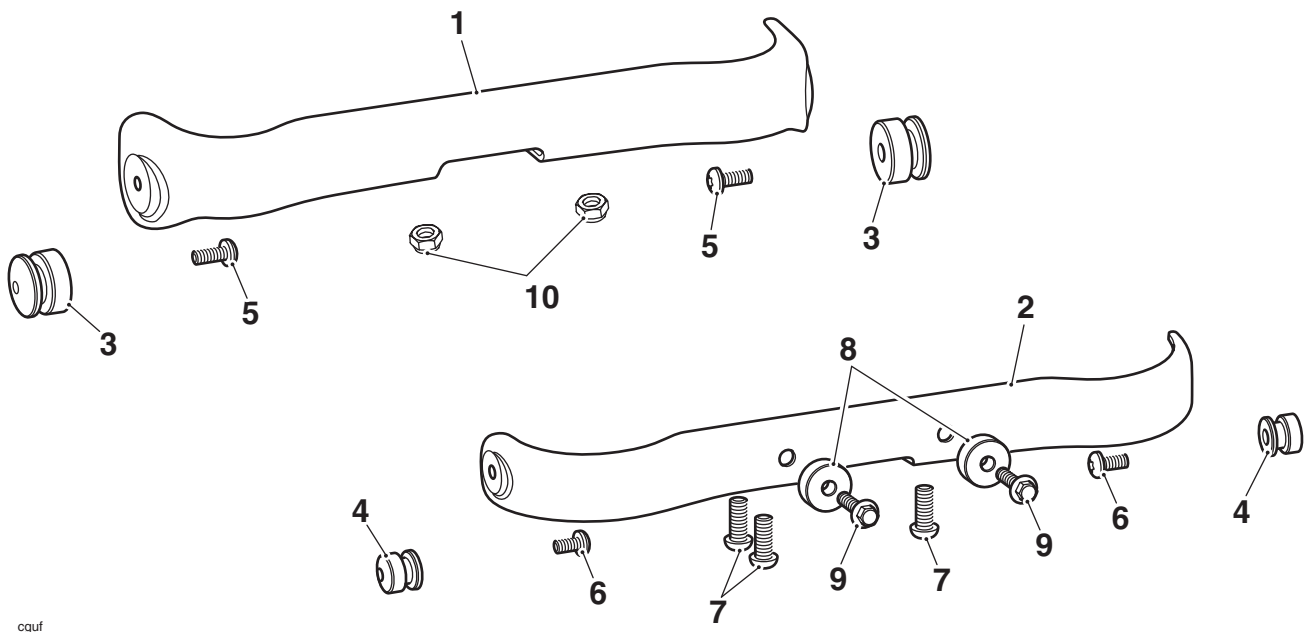
A9708237, A9708238, A9708250 and A9838004

Thank you for choosing this Triumph genuine accessory kit. This accessory kit is the product of Triumph's use of proven engineering, exhaustive testing, and continuous striving for superior reliability, safety and performance.

Completely read all of these instructions before commencing the installation of the accessory kit in order to become thoroughly familiar with the kit's features and the installation process.

These instructions should be considered a permanent part of your accessory kit, and should remain with it even if your accessory-equipped motorcycle is subsequently sold.

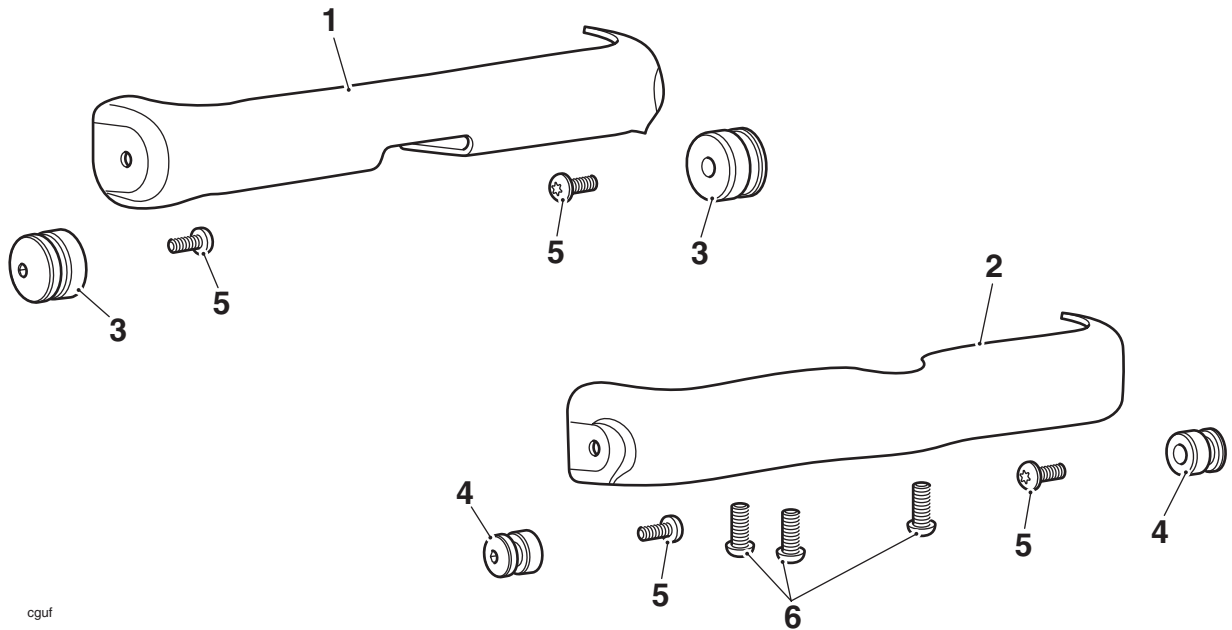
A9708237



Parts Supplied:

1. Bracket, upper	1 off	6. Screw, M6 x 12 mm	2 off
2. Bracket, lower	1 off	7. Screw, M8 x 20 mm	3 off
3. Spool, M6 x 22.6 mm	2 off	8. Spacer	2 off
4. Spool, M6 x 17.6 mm	2 off	9. Bolt, M6 x 25 mm	2 off
5. Screw, M6 x 16 mm	2 off	10. Locknut, M10	2 off

A9708238

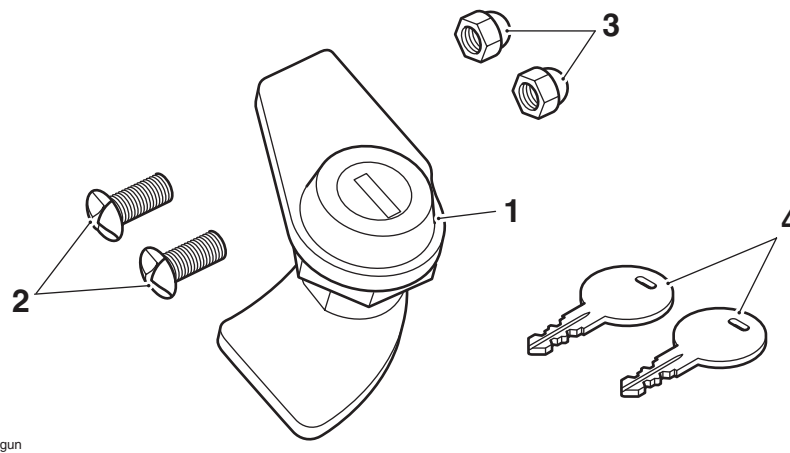


cguf

Parts Supplied:

1. Bracket, upper	1 off	4. Spool, M6 x 22.1 mm, only used with light bar kit A9838006	2 off
2. Bracket, lower	1 off	5. Screw, M6 x 16 mm	4 off
3. Spool, M6 x 22.6 mm	2 off	6. Screw, M8 x 20 mm	3 off

A9708250 (optional)

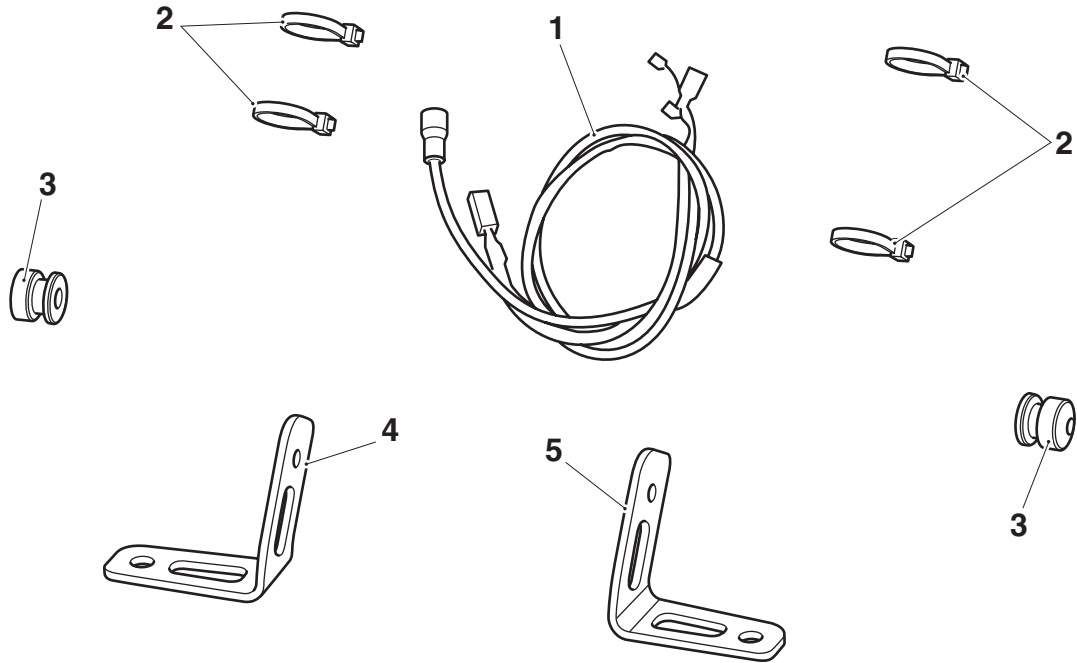


cgun

Parts Supplied:

1. Lock	1 off	3. Nut, domed	2 off
2. Screw, anti-tamper	2 off	4. Key	2 off

A9838004



cgul

Parts Supplied:

- | | | | |
|---------------------------------|-------|----------------------------------|-------|
| 1. Harness, direction indicator | 2 off | 4. Bracket, right hand indicator | 1 off |
| 2. Cable tie | 4 off | 5. Bracket, left hand indicator | 1 off |
| 3. Spool, M6 x 20 mm | 2 off | | |

Warning

This accessory kit is designed for use on Triumph America and Speedmaster motorcycles only and should not be fitted to any other Triumph model or to any other manufacturer's motorcycle. Fitting this accessory kit to any other Triumph model, or to any other manufacturer's motorcycle, may interfere with the rider and could affect the handling, stability or other aspects of the motorcycle's operation which may result in loss of motorcycle control and an accident.

Warning

Always have Triumph approved parts, accessories and conversions fitted by a trained technician of an authorised Triumph dealer. The fitment of parts, accessories and conversions by a technician who is not of an authorised Triumph dealer may affect the handling, stability or other aspects of the motorcycle's operation which may result in loss of motorcycle control and an accident.

Warning

Throughout this operation, ensure that the motorcycle is stabilised and adequately supported on a paddock stand to prevent risk of injury from the motorcycle falling.

Warning

A torque wrench of known accurate calibration must be used when fitting this accessory kit. Failure to tighten any of the fasteners to the correct torque specification may affect motorcycle performance, handling and stability. This may result in loss of motorcycle control and an accident.

Fitting Kit A9708237, A9708238 and A9838004

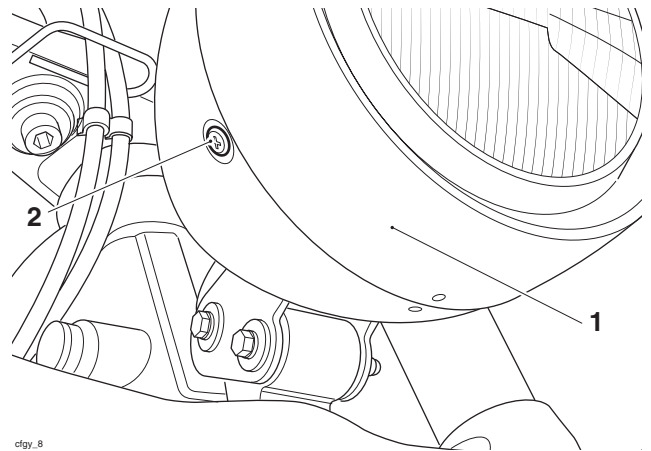
1. Disconnect the battery, negative (black) lead first.

Note:

- **For Triumph Speedmaster, continue from step 2 to step 18. Then continue from step 21.**
- **For Triumph America continue from step 19.**

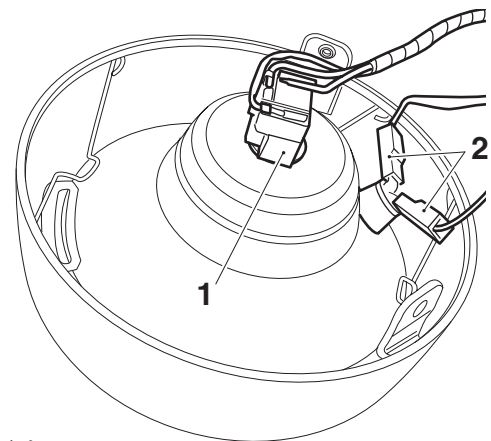
Triumph Speedmaster

2. Remove the screws securing the headlight to the headlight bowl.



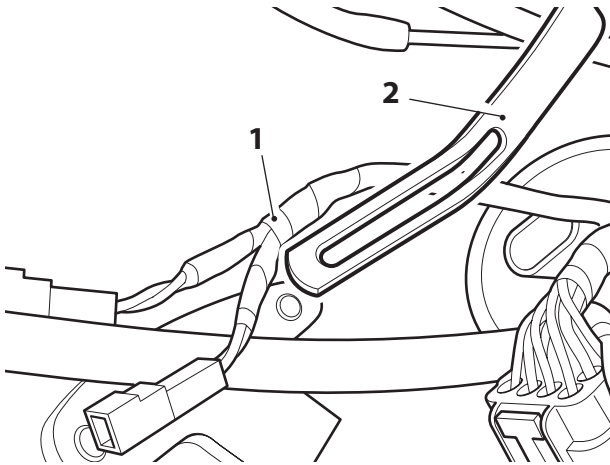
1. **Headlight**
2. **Screw (1 of 2)**

3. Detach the headlight from its bowl while supporting it to prevent the cables from being over extended.
4. Disconnect the headlight and position lamp electrical connectors.



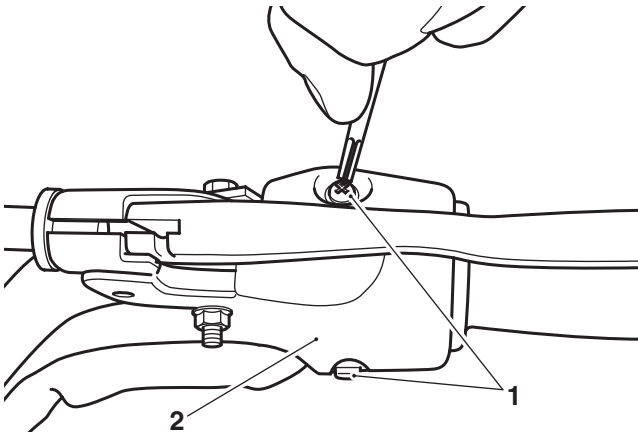
1. **Headlight connector**
2. **Position lamp connectors**

- Release the strap which may be retaining the indicator harness to the headlight bowl.



- Indicator harness
- Strap

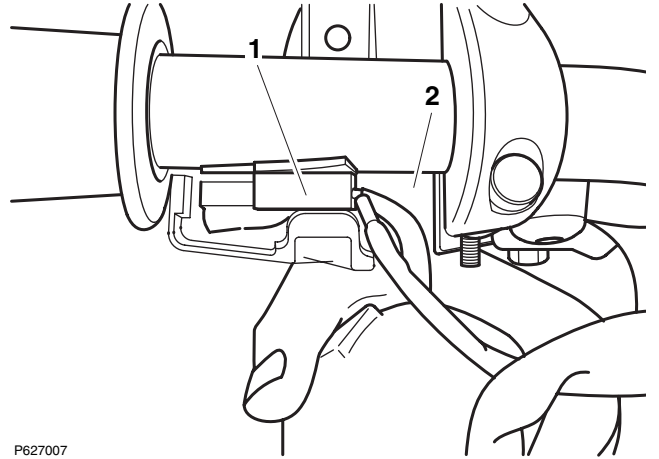
- Release the screws and detach the left hand switchgear.



T908.15.08_1

- Screws
- Switchgear

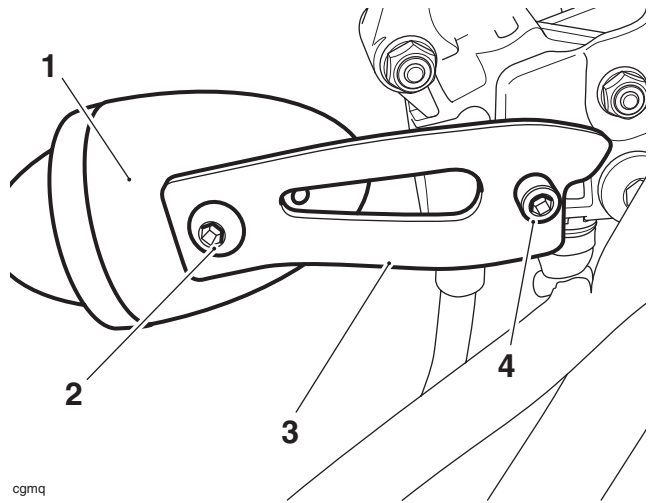
- Free the indicator wiring from the recess in the switchgear.



P627007

- Indicator connector, left hand side shown
- Recess

- Disconnect the indicator wiring connector.
- Release the screw securing the indicator to its bracket and remove the indicator. Retain the screw for re-use.

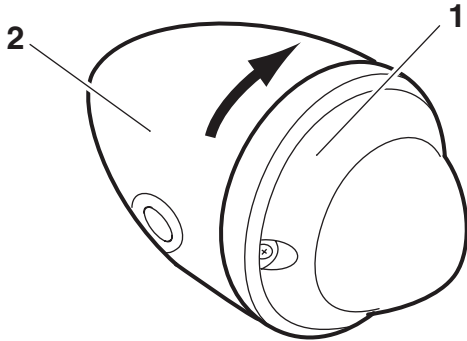


ogmq

- Indicator
- Screw
- Bracket
- Bolt

- Release the bolt and remove the indicator bracket. Retain the bolt and bracket if the motorcycle is to be returned to its original condition.
- Refit the switchgear and tighten the screws to **3 Nm**.

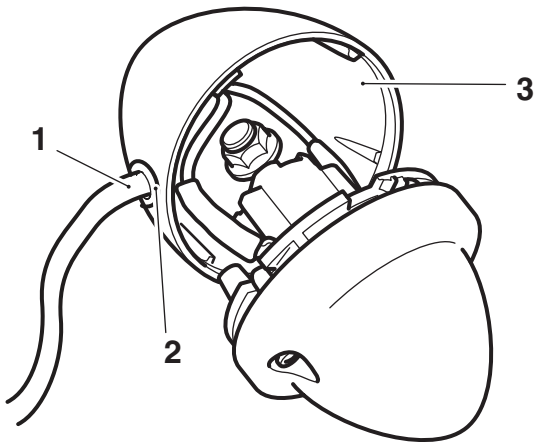
- Carefully rotate the indicator lens clockwise and gently pull forward to detach it from the indicator housing.



T908051_2

- Indicator lens
- Indicator housing

- Disconnect the connectors from the bulb housing and lens assembly.
- Remove the harness and grommet from the indicator housing. Retain the harness and grommet if the motorcycle is to be returned to its original condition.

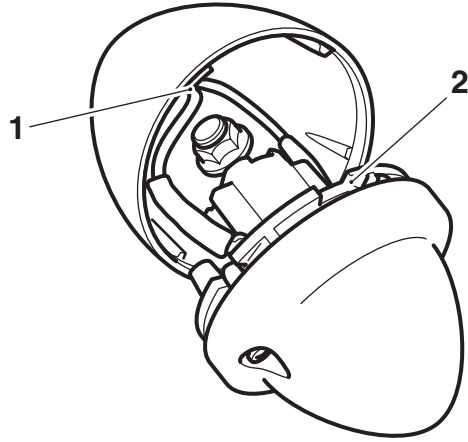


cgmo_1

- Harness
- Grommet
- Indicator housing

- Collect an indicator harness from the kit and feed it into the indicator housing and fit the grommet.
- Connect the connectors to the bulb housing and lens assembly.

- Align the locating slots in the bulb housing and lens assembly to the locating tangs on the indicator housing. Then turn anti-clockwise to lock the lens assembly into position. Ensure that the drain hole in the indicator lens is at the bottom.



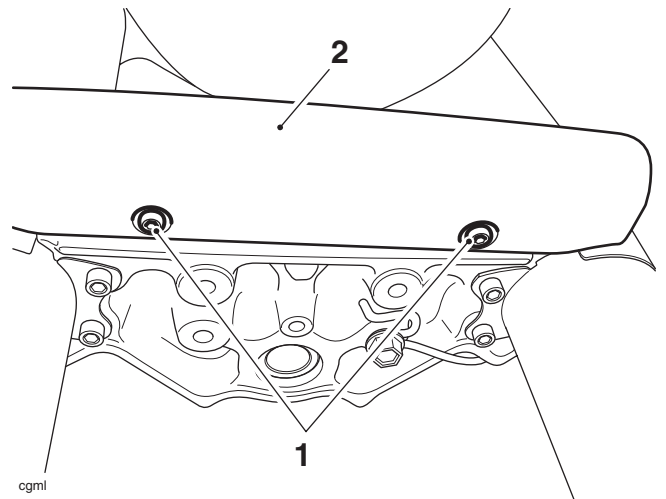
cgmo

- Locating slot, top shown
- Locating tang, top shown

- Repeat steps 6 to 17 for the right hand indicator.

Triumph America

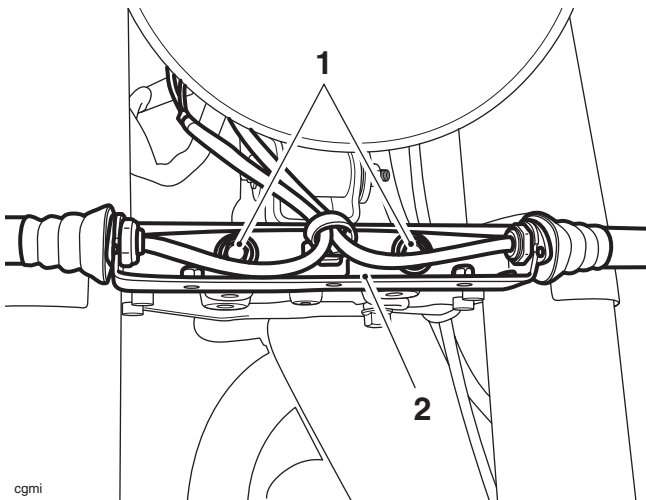
- Release the screws and remove the cover from the front indicator bracket. Retain the screws and the cover for re-use.



cgml

- Screws
- Cover

20. Release the bolts and remove the front indicators and bracket assembly. Support the indicator bracket to prevent damage the indicator harness. Retain the bolts if the motorcycle is to be returned to its original condition.



cgmi

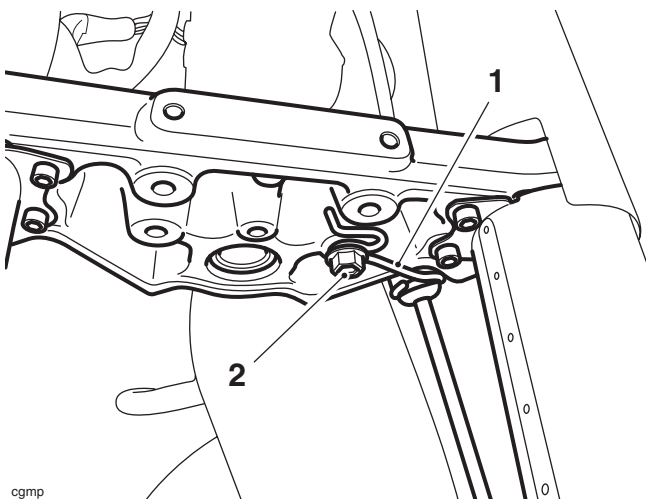
1. Bolts
2. Indicator bracket

All Models

Note:

- Note the position of the wire guide for installation.

21. Detach the wire guide from the lower yoke. Retain the bolt and wire guide for re-use.

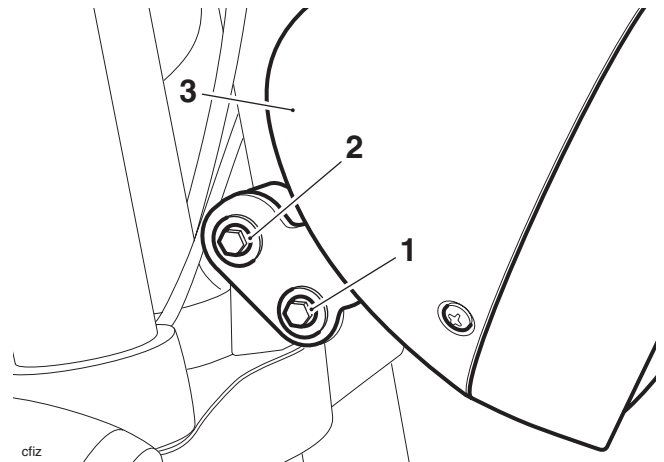


cgmp

1. Wire guide
2. Bolt

22. Remove the upper bolt from the headlight mounting. Retain the bolt for re-use.

23. Loosen the lower bolt for the headlight mounting and pivot the headlight down.



cfiz

1. Lower bolt
2. Upper bolt
3. Headlight

Note:

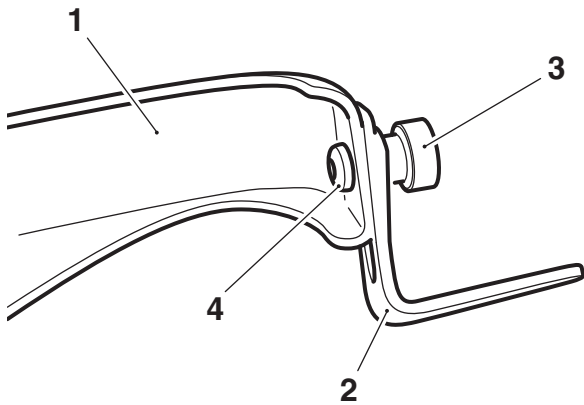
- For Triumph Speedmaster, continue from step 24 to step 30. Then continue from step 32.
- For Triumph America, continue from step 31.

Triumph Speedmaster

Note:

- If the light kit A9838006 is fitted or is to be fitted at the same time, omit steps 24 to 30 and refer to the light instructions for the fitting of the direction indicators. Then continue from step 32.
 - If the light kit A9838006 is not fitted and is not going to be fitted, continue from step 24.
24. Collect the right hand indicator bracket and a M6 x 20 mm spool from kit A9838004.

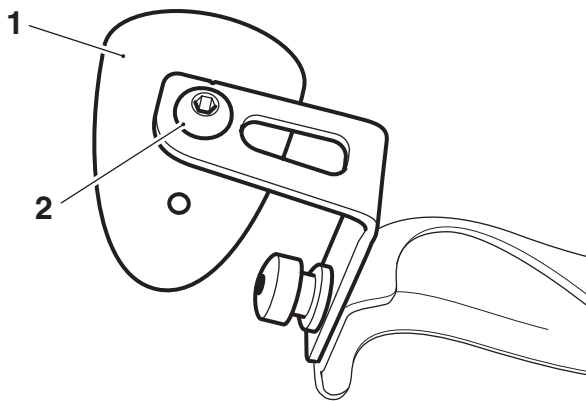
25. Align the indicator bracket to the lower mounting bracket as shown below. Secure in position using the spool and a M6 x 16 mm screw from kit A9708238, as shown below. Tighten the screw to **9 Nm**.



cgmm

- 1. Lower mounting bracket
- 2. Indicator bracket, right hand side shown
- 3. Spool
- 4. M6 screw

26. Repeat steps 24 and 25 for the left hand side.
 27. Fit one of the indicators to the top of the right hand bracket, secure with the original screw and tighten to **10 Nm**.



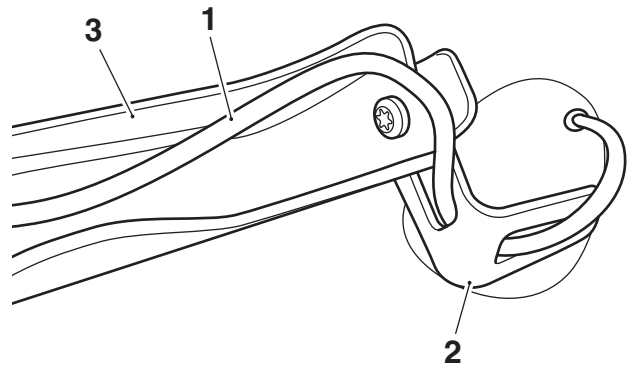
cgmm

- 1. Indicator
- 2. Screw

Warning

When securing electrical cables with cable ties, ensure they are fully tight. Ensure there is some free movement in the cables. Failure to do so may result in damage to the electrical cables which may lead to loss of motorcycle control and an accident.

28. Route the harness along the mounting brackets as shown below. The harness should exit at the centre of the lower bracket below the headlight. Secure the harness using two of the cable ties from the kit A9838004.



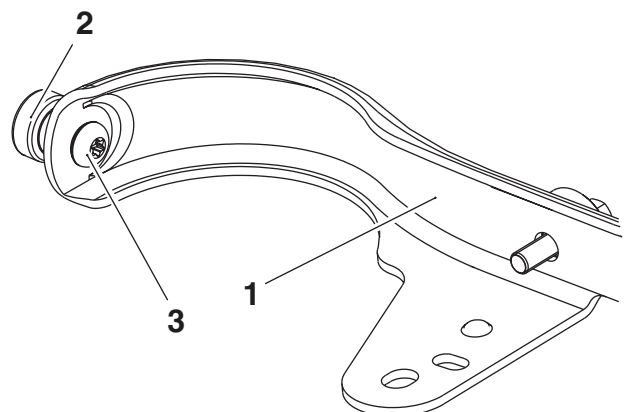
cgut

- 1. Harness
- 2. Indicator bracket
- 3. Lower mounting bracket

29. Mark the free end of the harness to identify it as the right hand side.
 30. Repeat steps 27 and 28 for the left hand side.

Triumph America

31. Fit the M6 x 17.6 mm spools from the kit to the lower mounting bracket and secure using the M6 x 12 mm screws and tighten to **9 Nm**.



cgum_2

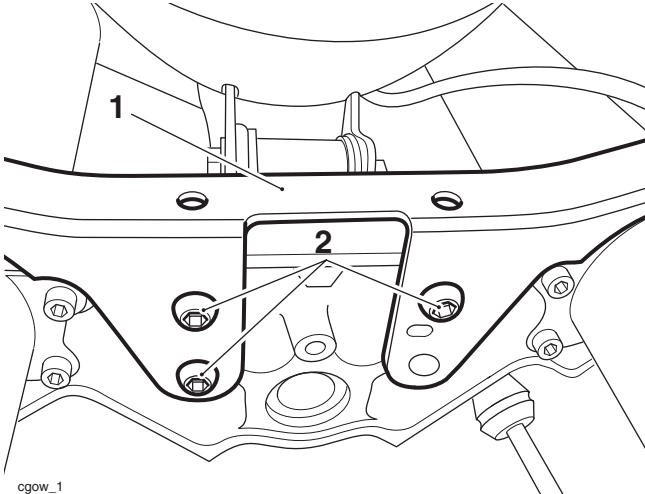
- 1. Lower mounting bracket
- 2. Spool
- 3. M6 x 12 mm screw

All Models

32. Align the lower mounting bracket assembly to the lower yoke and secure with the M8 x 20 mm screws from the kit.

For Triumph Speedmaster only: Tighten the screws to **18 Nm**.

For Triumph America only: Do not fully tighten the screws at this stage.



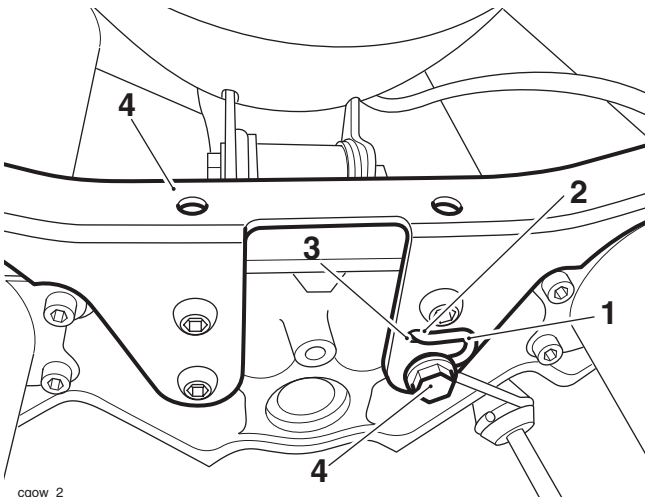
cgow_1

- 1. Lower bracket
- 2. M8 x 20 mm screw

33. Fit the cable guide as noted for removal, ensure its locating tang aligns with the front hole, fit the original bolt through the rear hole.

For Triumph Speedmaster only: Tighten to **20 Nm**.

For Triumph America only: Do not fully tighten the bolt at this stage.



cgow_2

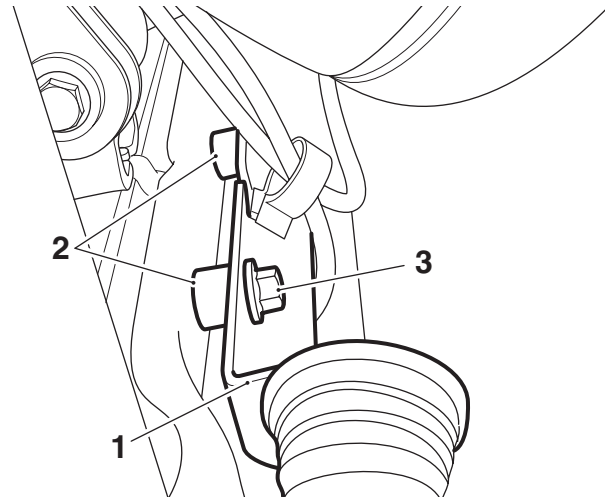
- 1. Cable guide
- 2. Locating tang
- 3. Front hole
- 4. Bolt

Note:

- **For Triumph America, continue from step 34 to step 37. Then continue from step 42.**
- **For Triumph Speedmaster, continue from step 38.**

Triumph America

34. Refit the indicator and bracket assembly using the spacers and M6 x 25 mm screws from the kit, as shown below. Tighten the screws to **10 Nm**.



cguo

- 1. Indicator bracket
- 2. Spacers
- 3. M6 x 25 mm screw, (1 of 2)

35. Tighten the lower mounting bracket screws to **18 Nm**.

36. Tighten the cable guide bolt to **20 Nm**.

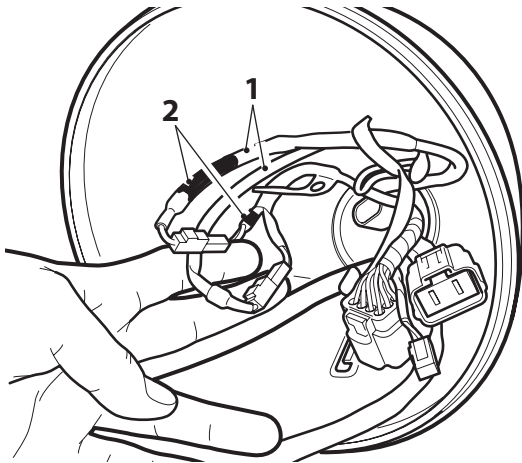
37. Refit the cover to the front of the indicator bracket and tighten the bolts to **5 Nm**.

Triumph Speedmaster

38. Route the direction indicator harnesses into the headlight bowl as noted for removal.

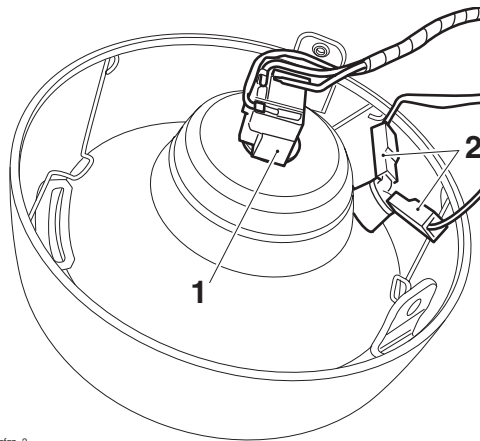
Note:

- **Note the right hand indicator harness is identified with a section of red tape.**
39. Connect the indicator harnesses to the main wiring harness inside the headlight bowl.



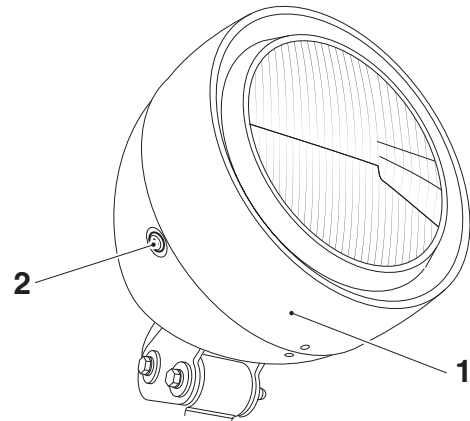
1. Indicator harness
2. Red tape, right hand indicator

40. Reconnect the headlight and position lamp electrical connectors.



1. Headlight connector
2. Position lamp connectors

41. Refit the headlight to the headlight bowl. Tighten the screws to **3 Nm**.

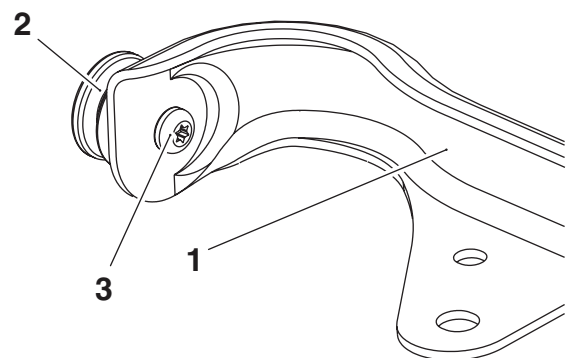


clgy_8

1. Headlight
2. Screws (1 of 2)

All Models

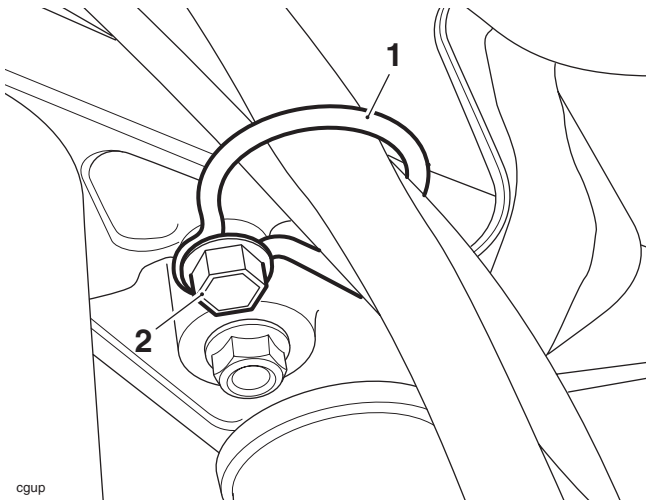
42. Fit the M6 x 22.6 mm spools to the upper mounting bracket from the kit and tighten the M6 x 16 mm screws to **9 Nm**.



cgum_1

1. Upper mounting bracket
2. Spool
3. M6 x 16 mm screw

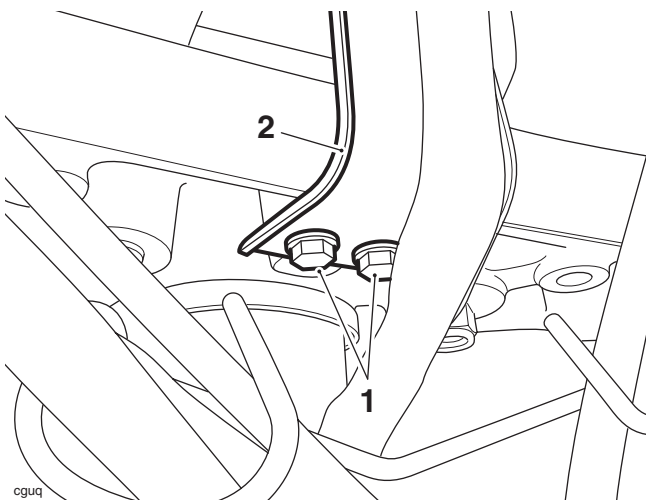
43. Release the fixings and detach the cable guide from the underside of the upper yoke.



cgup

- 1. Cable guide**
2. Fixing, 1 of 2 right hand side shown

44. Release the fixings, detach the instruments and bracket assembly from the upper yoke and carefully position aside.

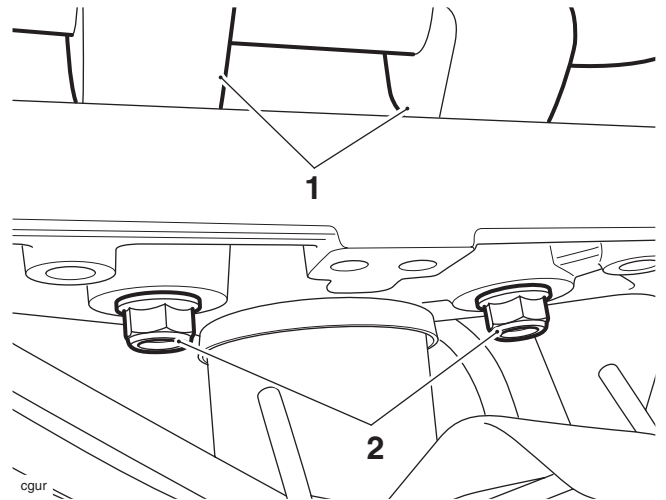


cgur

- 1. Fixings**
2. Instrument bracket

45. **For Triumph America Only:** Remove the handlebar, as described in the service manual.

46. Remove the fixings securing the handlebar risers to the upper yoke. For Triumph Speedmaster, have an assistant hold the handlebar.

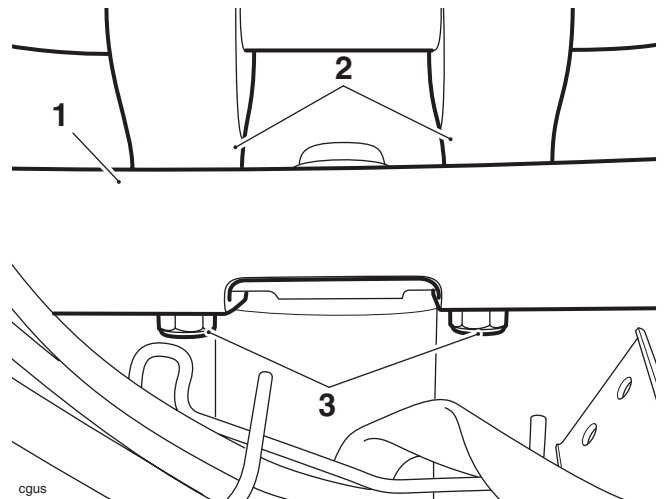


cgur

- 1. Risers**
2. Fixings, America shown

47. **For Triumph Speedmaster only:** Fit the upper mounting bracket assembly to the upper yoke. Refit the handlebar riser fixings but do not fully tighten at this stage.

48. **For Triumph America only:** Fit the upper mounting bracket assembly to the upper yoke. Fit the new M10 locknuts from the kit to the handlebar riser but do not fully tighten at this stage.



cgus

- 1. Upper mounting bracket**
2. Risers
3. Fixings, America shown

49. Refit the instruments and bracket assembly and tighten the fixings to **9 Nm**.

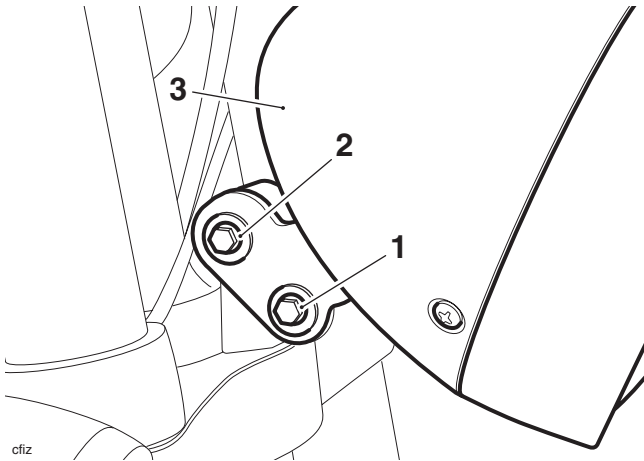
50. Attach the cable guide to the upper yoke and tighten the fixings to **20 Nm**.

51. Tighten the handlebar riser fixings to **45 Nm**.

52. **For Triumph America Only:** Refit the handlebar, as described in the service manual.

53. Reconnect the battery, positive (red) lead first.

54. Turn the ignition switch to ON and check that the headlight, indicators and horn operate correctly. Turn the ignition switch to OFF.
55. Raise the headlight and fit the upper bolt. Do not fully tighten the bolt at this stage.



1. Lower bolt
2. Upper bolt
3. Headlight

56. Check the headlight alignment, as described in the service manual.
57. Tighten the headlight vertical alignment bolts to **12 Nm**.
58. Check the routing of the wiring harnesses and ensure they are not trapped or stressed in any way.

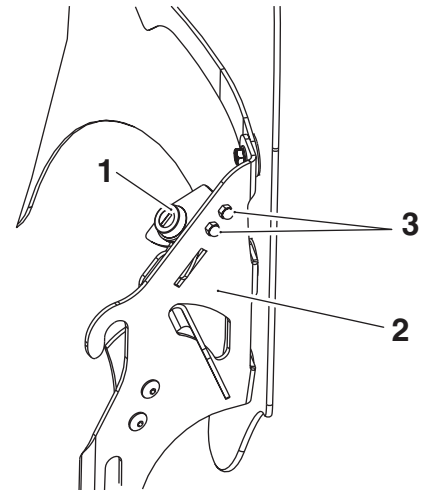


Warning

Move the handlebars to left and right full lock while checking that the cables or harnesses do not bind or restrict full lock operation. Any component, cables or harnesses that will restrict the steering may cause loss of control of the motorcycle and an accident.

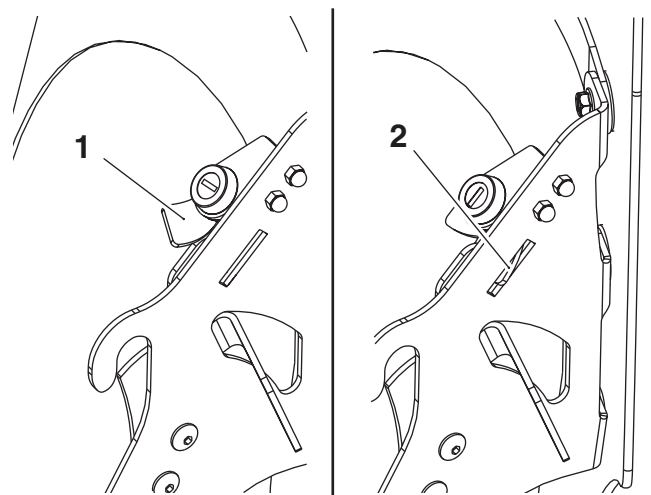
Fitting A9708250 to a Windscreen (optional)

1. Align the lock to the fixing holes in the right hand bracket of the windscreen.
2. Fit the screws through the bracket on the lock and the windscreen bracket. Fit the domed nuts but do not fully tighten at this stage.



1. Windscreen lock
2. Windscreen bracket
3. Domed nuts

3. To ensure a smooth operation of the lock, insert the key and turn anti-clockwise to the locked position.

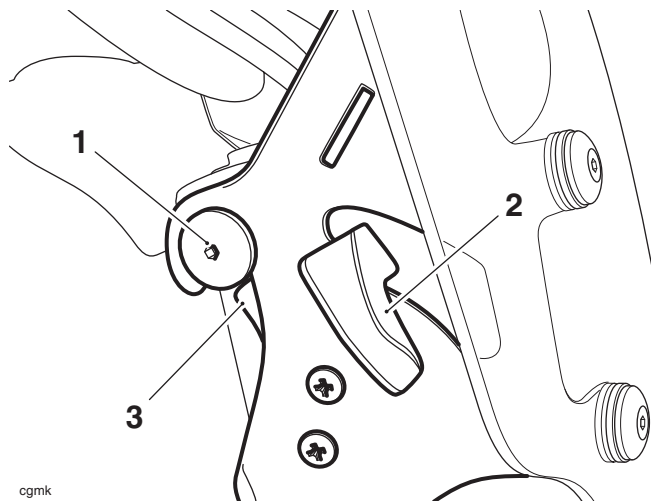


1. Unlocked
2. Locked

4. Tighten the domed nuts to **12 Nm**.

Fitting the Windscreen

1. If fitted, ensure the windscreen lock is in the unlocked position.
2. Align the windscreen mounting slots to the spools on the motorcycle.
3. Slide the windscreen down until the upper mountings are locked into position.



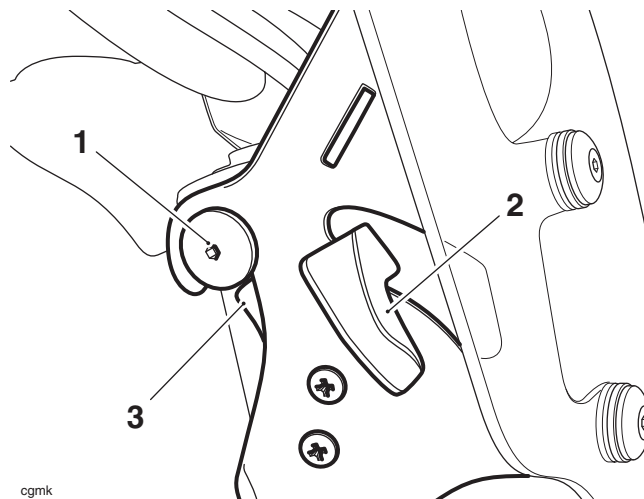
cgmk

1. Upper mounting
2. Handle
3. Handle latch

4. If fitted, turn the windscreen lock to the locked position.

Removing the Windscreen

1. If fitted, turn the windscreen lock to the unlocked position.
2. Stand astride the front wheel and pull the handles towards the windscreen to release the mountings.



cgmk

1. Upper mountings
2. Handle
3. Handle latch

3. Lift the windscreen up to disengage the mountings and completely remove from the motorcycle.



Warning

After fitting the accessory kit, the motorcycle will exhibit new handling characteristics. Operate the motorcycle in a safe area free from traffic to gain familiarity with any new characteristics. Operation of the motorcycle when not familiar with any new handling characteristics may result in loss of motorcycle control and an accident.



Warning

If, after fitment of this accessory kit, you have any doubt about the performance of any aspect of the motorcycle, contact an authorised Triumph dealer and do not ride the motorcycle until the authorised dealer has declared it fit for use. Riding a motorcycle when there is any doubt as to any aspect of the performance of the motorcycle may result in loss of control of the motorcycle leading to an accident.



Warning

Never ride an accessory equipped motorcycle at speeds above 80 mph (130 km/h).

The presence of accessories will cause changes in the stability and handling of the motorcycle. Failure to allow for changes in motorcycle stability may lead to loss of control or an accident.

Remember that the 80 mph (130 km/h) limit will be reduced by the fitting of non-approved accessories, incorrect loading, worn tyres, overall motorcycle condition and poor road or weather conditions.



Warning

The motorcycle must not be operated above the legal road speed limit except in closed course conditions.



Warning

Never attempt to clean or adjust the windscreen while riding the motorcycle. Removal of the rider's hands from the handlebars while riding the motorcycle will diminish the ability of the rider to maintain the control of the motorcycle. Attempting to clean or adjust the windscreen while riding the motorcycle may result in loss of control of the motorcycle and an accident.



Warning

The windscreen is no substitute for a safety helmet or eye protection. Windscreens are designed to provide wind protection and increased rider comfort. They are not designed to provide protection in the event of a collision with another vehicle, the road, birds or any other objects. When riding a motorcycle, both rider and passenger must always wear a safety helmet, eye protection, gloves, boots and trousers (close fitting around the knees and ankles). Although full protection is not possible, wearing the correct protective clothing can reduce the risk of serious injury when riding.