



Accessory Fitting Instructions

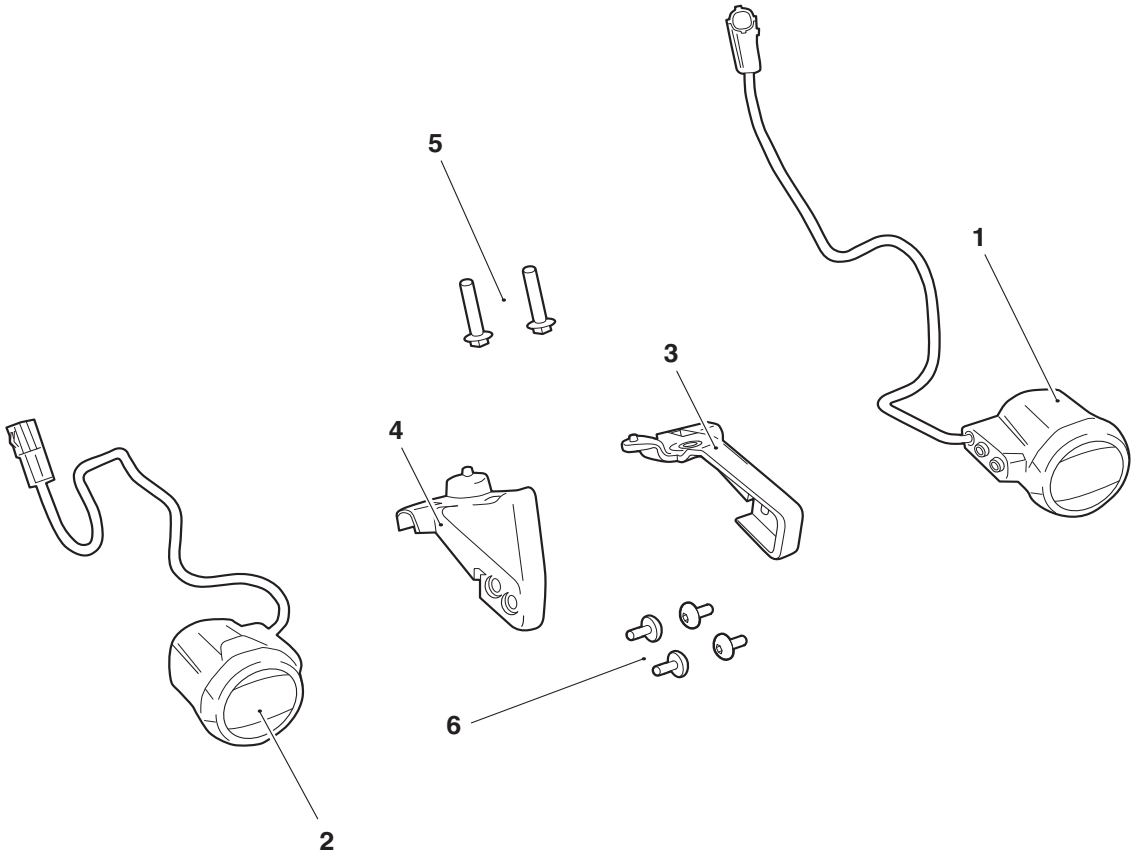
LED Fog Light Kit	
Kit Number	Models Affected
A9830208	Tiger 1200 GT

Thank you for choosing this Triumph genuine accessory kit. This accessory kit is the product of Triumph's use of proven engineering, exhaustive testing, and continuous striving for superior reliability, safety and performance.

Completely read all of these instructions before commencing the installation of the accessory kit in order to become thoroughly familiar with the kit's features and the installation process.

These instructions should be considered a permanent part of your accessory kit, and should remain with it even if your accessory equipped motorcycle is subsequently sold.

Parts Supplied



1. Fog light, LED, left hand	2 off	4. Mount moulding, right hand	2 off
2. Fog light, LED, right hand	1 off	5. Fixing, M6 x 28 mm	2 off
3. Mount moulding, left hand	1 off	6. Fixing, M5 x 10 mm	4 off



### Warning

Fit only genuine Triumph accessories to those models approved by Triumph as listed in the associated Triumph fitting instructions. The accessory kits covered in this instruction are designed for use on specific models of Triumph motorcycle. The accessory kits and the models applicable are listed at the start of the instruction. They should never be fitted to any other Triumph model or to any other manufacturer's motorcycle. Fitting an accessory kit to a Triumph model not listed, or to any other manufacturer's motorcycle will affect the performance, stability and handling of the motorcycle. This may affect the rider's ability to control the motorcycle and could result in an accident causing severe injuries or death.



### Warning

Always have Triumph approved parts, accessories and conversions fitted by a trained technician of an authorised Triumph dealer. The fitment of parts, accessories and conversions by a technician who is not of an authorised Triumph dealer may affect the handling, stability or other aspects of the motorcycle's operation which may result in loss of motorcycle control and an accident.



### Warning

Always make sure that the newly installed wiring does not chafe against other parts of the motorcycle such that it may be rubbed through and cause an electrical problem. In addition, always make sure that the newly installed wiring will not restrict steering movement. Both conditions are hazardous and could give rise to a dangerous riding condition resulting in a fire, loss of motorcycle control and an accident.



### Warning

Throughout this operation, make sure that the motorcycle is stabilised and adequately supported to prevent risk of injury from the motorcycle falling.



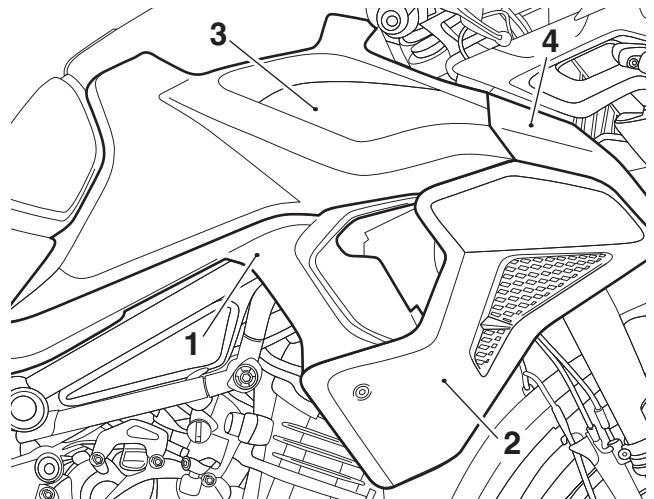
### Warning

A torque wrench of known accurate calibration must be used when fitting this accessory kit. Failure to tighten any of the fasteners to the correct torque specification may affect motorcycle performance, handling and stability. This may result in loss of motorcycle control and an accident.

#### Note:

- Triumph offers a broad range of approved genuine accessories for your motorcycle. We cannot therefore cover all possible equipment variations in these instructions. For removal and installation of Triumph Genuine Accessories always refer to the instructions supplied with the respective accessory kit. To obtain additional copies of any Triumph accessory instructions, visit [www.triumphinstructions.com](http://www.triumphinstructions.com) or contact your authorised Triumph dealer.

1. Remove the rider and passenger seats as described in the Service Manual.
2. Disconnect the battery, as described in the Service Manual.
3. Remove the deflector panel, side panel and fuel tank panels from both sides of the motorcycle as per the Service Manual.

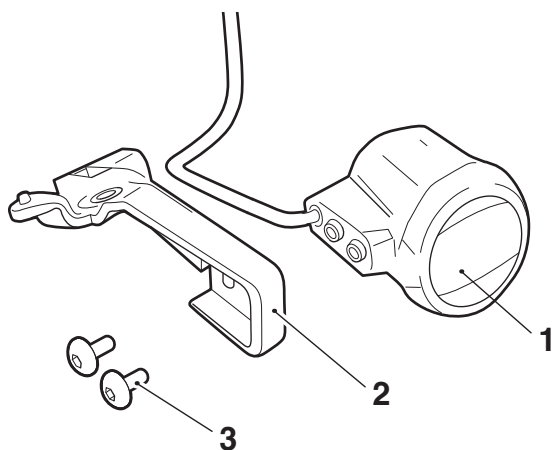


1. Deflector panel
2. Side panel
3. Fuel tank panel
4. Fuel tank panel

## Left Hand Side

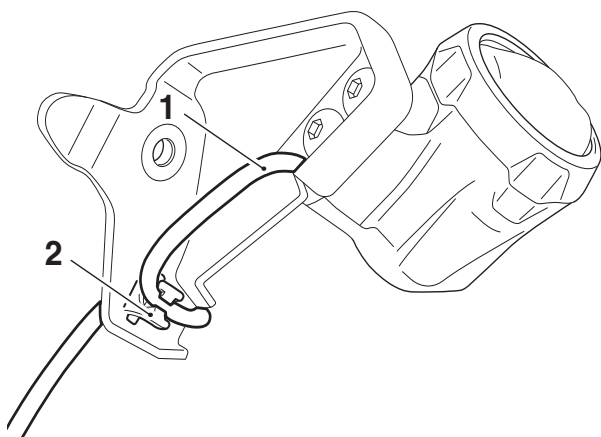
### Note:

- **Make sure the correct fog light is selected. The text on the fog light lens should be oriented correctly for both lights when fitted to the motorcycle.**
4. Mount the left hand fog light to the left hand mount moulding using two M5 x 10 mm fixings from the kit in the order shown. Do not fully tighten the fixings at this stage.



1. Fog light, left hand
2. Mount moulding, left hand
3. Fixing, M5 x 10 mm

5. Locate the fog light sub harness through the retaining feature in the mount moulding in the orientation shown.



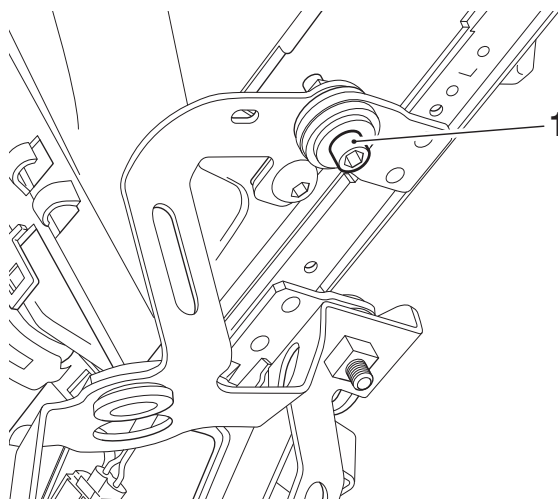
1. Fog light sub harness
2. Retaining feature



### Caution

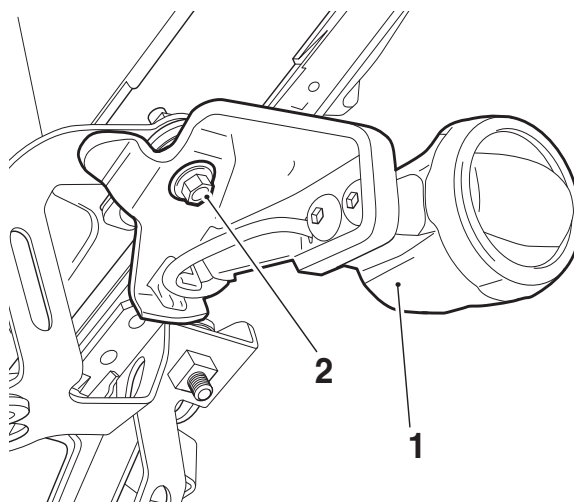
A wiring harness which becomes trapped or kinked during installation, or general motorcycle operation, may result in wiring harness damage and electrical malfunctions.

6. Remove the mount fixing from the underside of the radiator support bracket. Retain the fixing if the motorcycle is to be returned to its original condition.



1. Fixing

7. Fit the left hand fog light assembly to the motorcycle using one M6 x 28 mm fixing from the kit. Make sure that the locating feature on the mount moulding is correctly located into the hole on the radiator support bracket. Tighten the fixing to **8 Nm**.



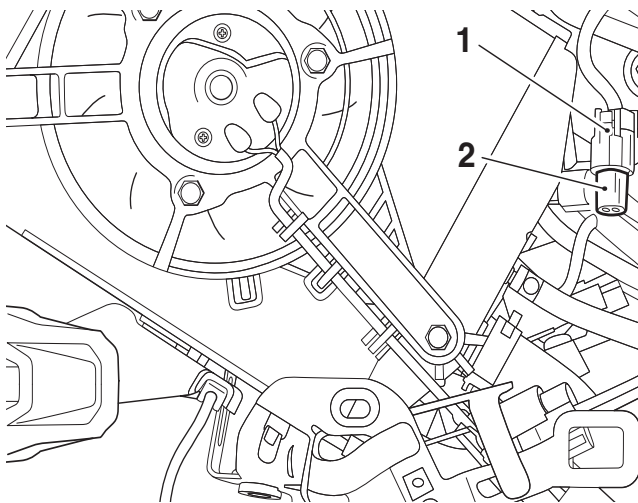
1. Fog light assembly
2. Fixing, M6 x 28 mm



### Caution

Blanking plugs are fitted to the harness electrical connectors to prevent water ingress. If the blanking plugs are removed for any reason, they should always be refitted. The harness electrical connectors should never be left exposed without the blanking plugs fitted as this may lead to a malfunction, or premature failure of components.

8. Locate the main harness fog light connector on the motorcycle, at the top rear corner of the radiator, retained on the radiator mount moulding. Remove the blanking plug. Retain the blanking plug if the motorcycle is to be returned to its original condition.



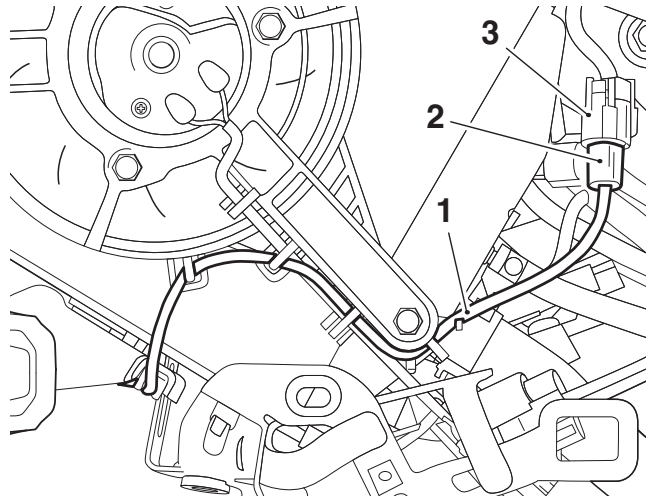
1. Main harness fog light connector
2. Blanking plug



### Caution

A wiring harness which becomes trapped or kinked during installation, or general motorcycle operation, may result in wiring harness damage and electrical malfunctions.

9. Route the left hand fog light sub harness as shown, making sure the cable is correctly retained in all of the retaining features on the radiator fan moulding. Connect the fog light sub harness connector to the fog light connector on the main wiring harness. Make sure the main harness connector is still retained on the radiator mount moulding.



1. Fog light sub harness
2. Fog light sub harness connector
3. Main harness fog light connector

#### Right Hand Side

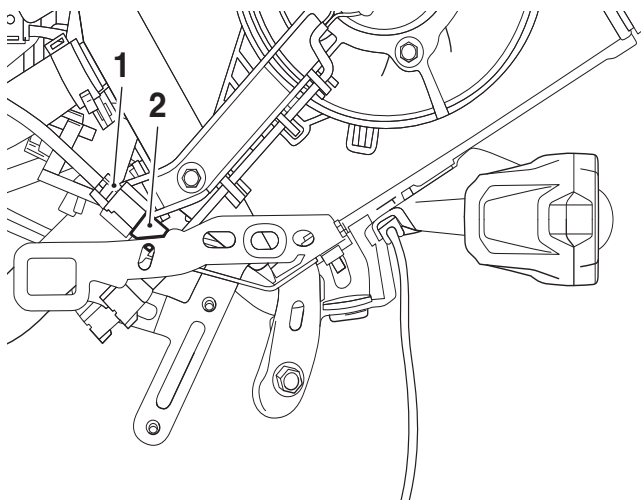
10. Repeat steps 4-7 on the right hand side of the motorcycle.



### Caution

Blanking plugs are fitted to the harness electrical connectors to prevent water ingress. If the blanking plugs are removed for any reason, they should always be refitted. The harness electrical connectors should never be left exposed without the blanking plugs fitted as this may lead to a malfunction, or premature failure of components.

11. Locate the main harness fog light connector on the motorcycle, at the bottom corner of the radiator, retained on the radiator fan moulding. Remove the blanking plug. Retain the blanking plug if the motorcycle is to be returned to its original condition.



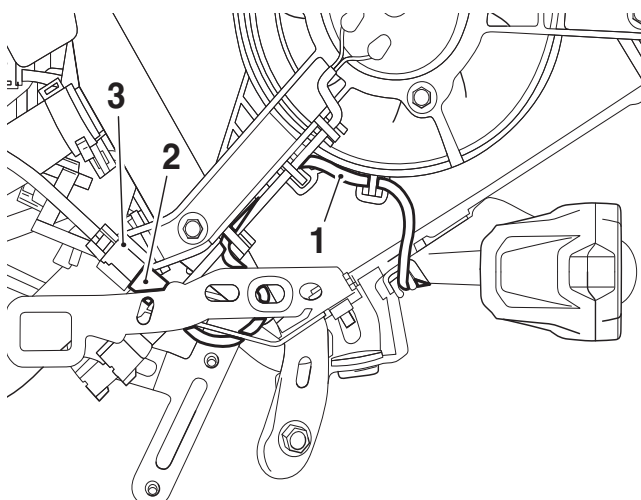
1. Main harness fog light connector
2. Blanking plug



### Caution

A wiring harness which becomes trapped or kinked during installation, or general motorcycle operation, may result in wiring harness damage and electrical malfunctions.

12. Route the right hand fog light sub harness as shown, making sure the cable is correctly retained in all of the retaining features on the radiator fan moulding. Connect the fog light sub harness connector to the fog light connector on the main wiring harness. Make sure the main harness connector is still retained on the radiator fan moulding.



1. Fog light sub harness
2. Fog light sub harness connector
3. Main harness fog light connector

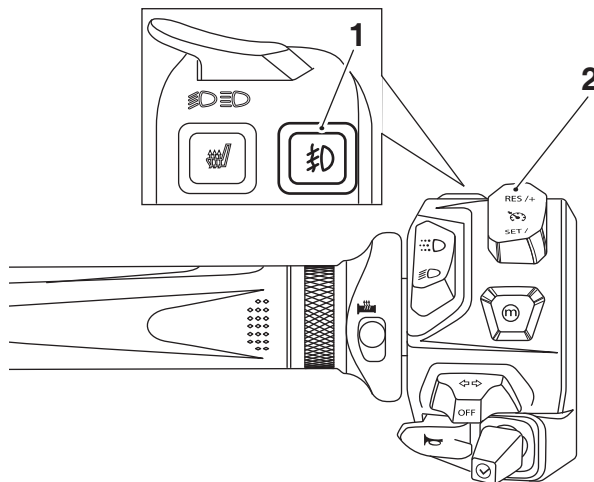
## Left Hand Side and Right Hand Side

13. Adjust the position of the left hand and right hand fog lights until the front face is vertical. Tighten the M5 x 10 mm fixings to **4 Nm**.
14. Refit the deflector panel, side panel and fuel tank panels to both sides of the motorcycle as per the Service Manual.
15. Reconnect the battery, as described in the Service Manual.
16. Refit the passenger and rider seats as described in the Service Manual.

## Fog Light System Testing

### Note:

- The fog lights switch is incorporated into the left hand switch housing, as shown.



1. Fog lights switch
2. Left hand switch housing

- The fog lights switch will only operate when the headlights are on.
- The fog lights switch will reset to OFF when the ignition is turned off, then on again.
- To turn the fog lights ON or OFF, with the headlights on, press and release the fog lights switch. When the fog lights are turned on the fog light indicator will illuminate in the multi-function display.

1. Operate the fog lights switch and check that the fog lights come on. While sitting on the motorcycle, check the fog light alignment against a wall. If the angle of the fog lights needs adjusting, repeat step 13.

## Operation

The fog lights will remain on when the engine is turned off using the engine stop switch. When the engine is not running turn off the ignition, or switch the fog lights off to avoid draining the battery.

The fog lights are protected by a chassis ECM which will automatically cut power in the event of an overload.

Power can be restored to the fog lights by turning the ignition switch off, then on again, provided that the condition that caused the fault has been rectified.

In the event of a more serious overload, fuse number PS1 protects the fog lights. Refer to the label in the fuse box lid for fuse amperage.



### Warning

If, after fitment of this accessory kit, you have any doubt about the performance of any aspect of the motorcycle, contact an authorised Triumph dealer and do not ride the motorcycle until the authorised dealer has declared it fit for use. Riding a motorcycle when there is any doubt as to any aspect of the performance of the motorcycle may result in loss of control of the motorcycle leading to an accident.



### Warning

Never ride an accessory equipped motorcycle at speeds above 80 mph (130 km/h).

The presence of accessories will cause changes in the stability and handling of the motorcycle. Failure to allow for changes in motorcycle stability may lead to loss of control or an accident.

Remember that the 80 mph (130 km/h) limit will be reduced by the fitting of non-approved accessories, incorrect loading, worn tyres, overall motorcycle condition and poor road or weather conditions.



### Warning

The motorcycle must not be operated above the legal road speed limit except in closed-course conditions.



### Warning

Only operate this Triumph motorcycle at high speed in closed-course, on-road competition or on closed-course racetracks. High-speed operation should only be attempted by riders who have been instructed in the techniques necessary for high speed riding and are familiar with the motorcycle's characteristics in all conditions.

High-speed operation in any other circumstances is dangerous and will lead to loss of motorcycle control and an accident.