

## Accessory Fitting Instructions

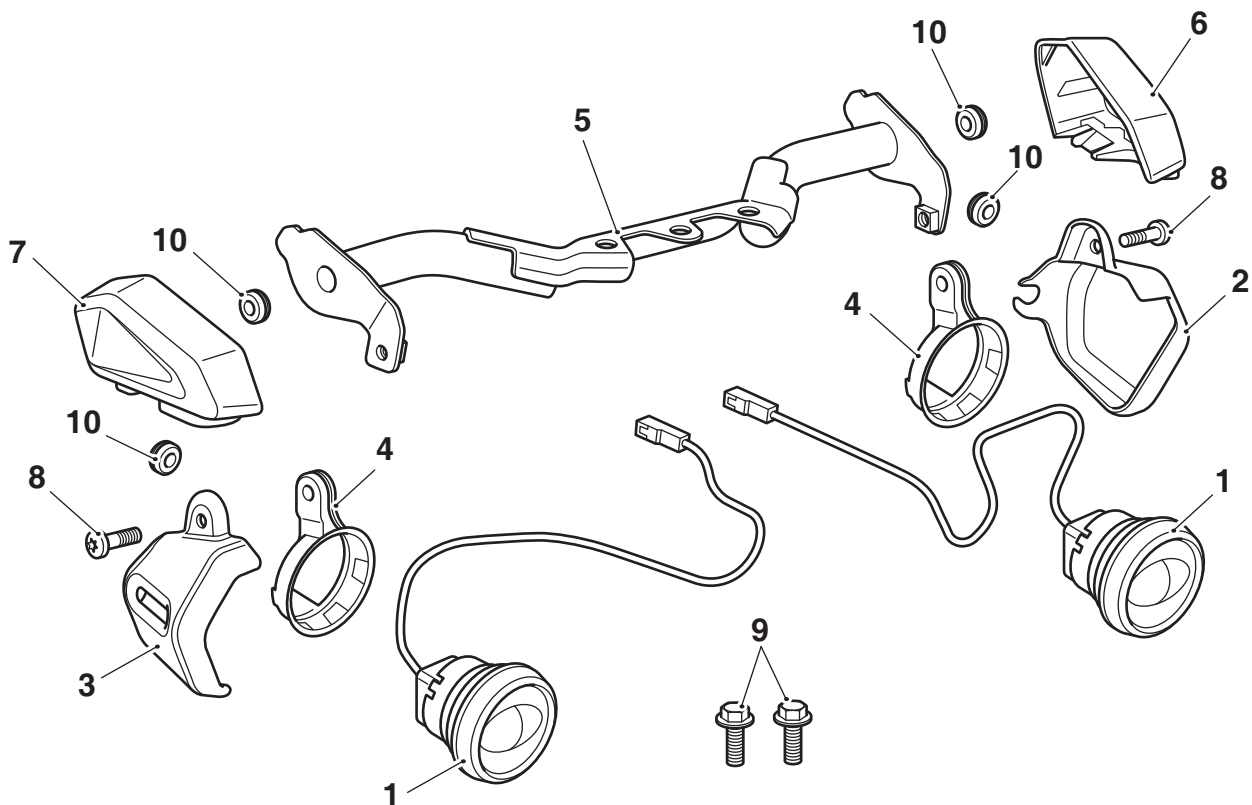
LED Fog Light Kit	
Kit Number	Models Affected
A9830200	Tiger 900 GT, Tiger 900 GT (LRH), Tiger 900 Rally

Thank you for choosing this Triumph genuine accessory kit. This accessory kit is the product of Triumph's use of proven engineering, exhaustive testing, and continuous striving for superior reliability, safety and performance.

Completely read all of these instructions before commencing the installation of the accessory kit in order to become thoroughly familiar with the kit's features and the installation process.

These instructions should be considered a permanent part of your accessory kit, and should remain with it even if your accessory equipped motorcycle is subsequently sold.

### Parts Supplied



1. Fog light, LED	2 off	6. End cap, left hand	1 off
2. Shroud, left hand	1 off	7. End cap, right hand	1 off
3. Shroud, right hand	1 off	8. Fixing, M5 x 20 mm	2 off
4. Plastic clamp	2 off	9. Fixing, M8 x 20 mm encapsulated	2 off
5. Mounting bar	1 off	10. Grommet	4 off

**Warning**

Fit only genuine Triumph accessories to those models approved by Triumph as listed in the associated Triumph fitting instructions. The accessory kits covered in this instruction are designed for use on specific models of Triumph motorcycle. The accessory kits and the models applicable are listed at the start of the instruction. They should never be fitted to any other Triumph model or to any other manufacturer's motorcycle. Fitting an accessory kit to a Triumph model not listed, or to any other manufacturer's motorcycle will affect the performance, stability and handling of the motorcycle. This may affect the rider's ability to control the motorcycle and could result in an accident causing severe injuries or death.

**Warning**

Always have Triumph approved parts, accessories and conversions fitted by a trained technician of an authorised Triumph dealer. The fitment of parts, accessories and conversions by a technician who is not of an authorised Triumph dealer may affect the handling, stability or other aspects of the motorcycle's operation which may result in loss of motorcycle control and an accident.

**Warning**

Always ensure that the newly installed wiring does not chafe against other parts of the motorcycle such that it may be rubbed through and cause an electrical problem. In addition, always ensure that the newly installed wiring will not restrict steering movement. Both conditions are hazardous and could give rise to a dangerous riding condition resulting in a fire, loss of motorcycle control and an accident.

**Warning**

Throughout this operation, ensure that the motorcycle is stabilised and adequately supported to prevent risk of injury from the motorcycle falling.

**Warning**

A torque wrench of known accurate calibration must be used when fitting this accessory kit. Failure to tighten any of the fasteners to the correct torque specification may affect motorcycle performance, handling and stability. This may result in loss of motorcycle control and an accident.

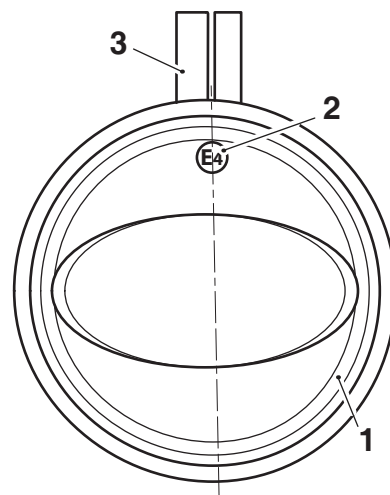
**Note:**

- **Triumph offers a broad range of approved genuine accessories for your motorcycle. We cannot therefore cover all possible equipment variations in these instructions. For removal and installation of Triumph Genuine Accessories always refer to the instructions supplied with the respective accessory kit. To obtain additional copies of any Triumph accessory instructions, visit [www.triumphinstructions.com](http://www.triumphinstructions.com) or contact your authorised Triumph dealer.**

1. Remove the rider and passenger seats as described in the Service Manual.
2. Disconnect the battery, as described in the Service Manual.
3. Collect the fog lights, plastic clamps, shrouds and mounting bar from the kit.

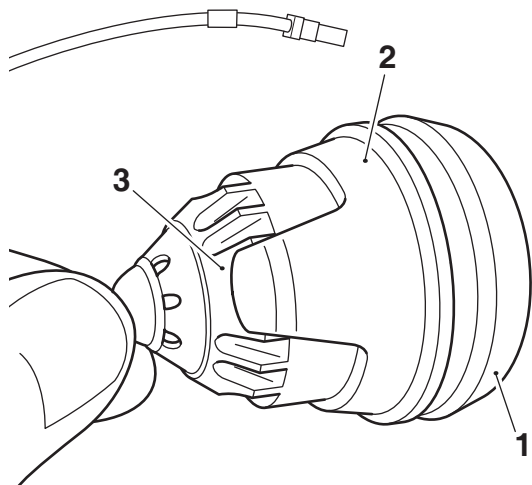
**Note:**

- **When fitting the plastic clamps to the fog lights the E marking on the fog light lens should always be positioned centrally at the top of the fog light, in line with the plastic clamp mounting, as shown below.**



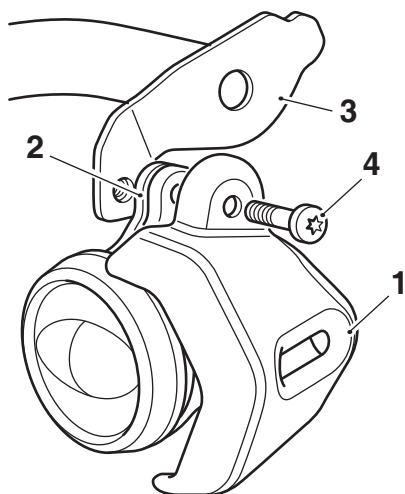
1. Fog light
2. E marking
3. Plastic clamp mounting

- Fit the plastic clamps onto the fog lights as shown ensuring the lower section of the plastic clamp locates in the recess in the underside of the fog light body.



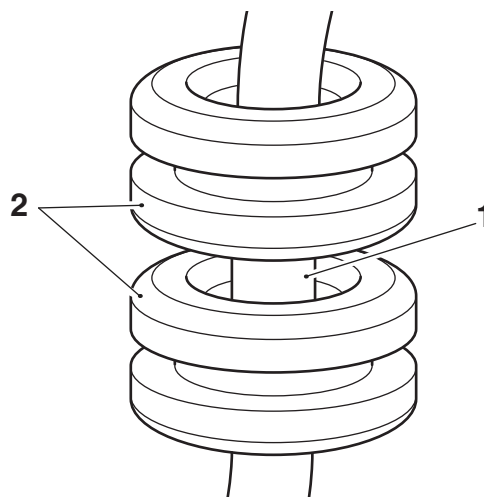
- Fog light
- Plastic clamp, lower section
- Recess, fog light body

- Align the fixing holes of the left hand fog light shroud, plastic clamp and left hand side of the mounting bar in the orientation shown and fit an M5 x 20 mm fixing from the kit. Do not fully tighten the fixing at this stage.



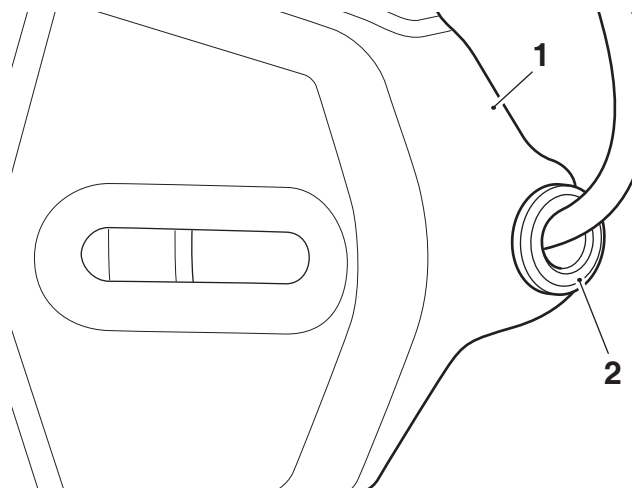
- Fog light shroud, left hand
- Plastic clamp
- Mounting bar
- Fixing, M5 x 20 mm

- Collect two grommets from the kit and place over the left hand fog light harness.



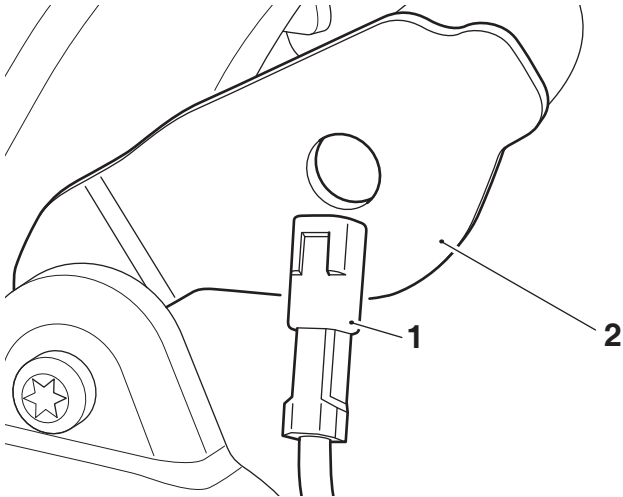
- Fog light harness
- Grommets

- Locate one grommet into the rear of the left hand fog light shroud, as shown.



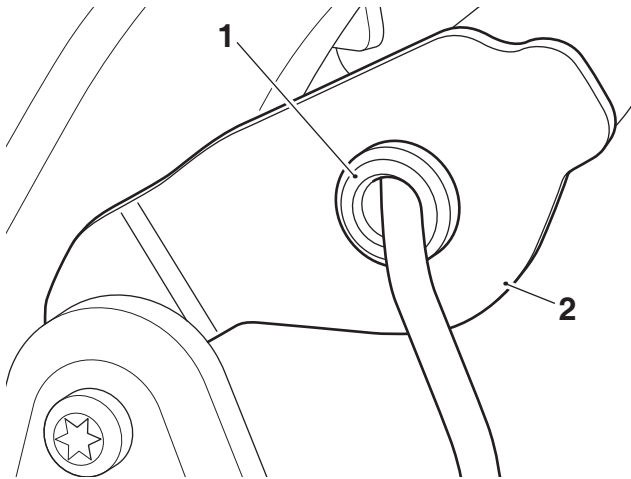
- Fog light shroud
- Grommet

8. Feed the left hand fog light harness through the hole in the end of the mounting bar.



1. Fog light harness, left hand  
2. Mounting bar

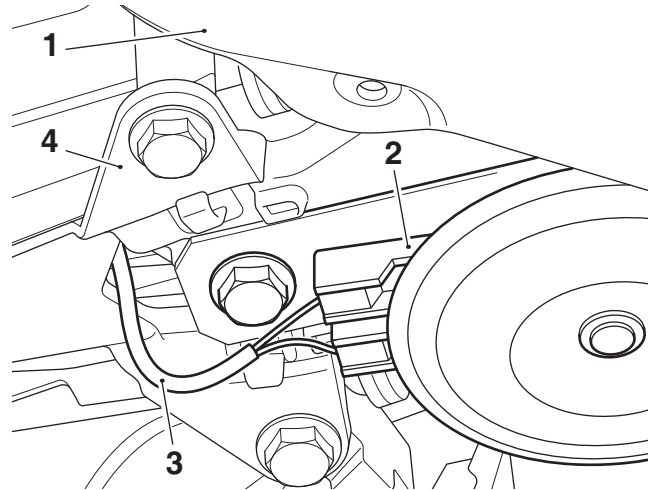
9. Locate the second grommet into the hole in the mounting bar as shown.



1. Grommet  
2. Mounting bar

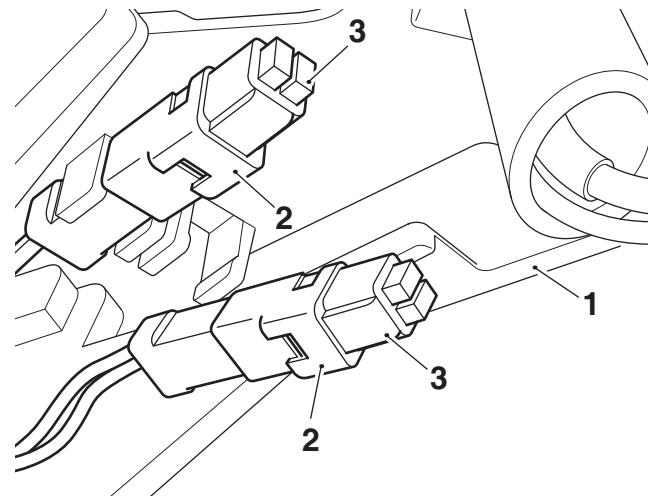
10. Repeat steps 5 to 9 for the right hand side.

11. Disconnect the horn harness from the horn which is located behind the beak.



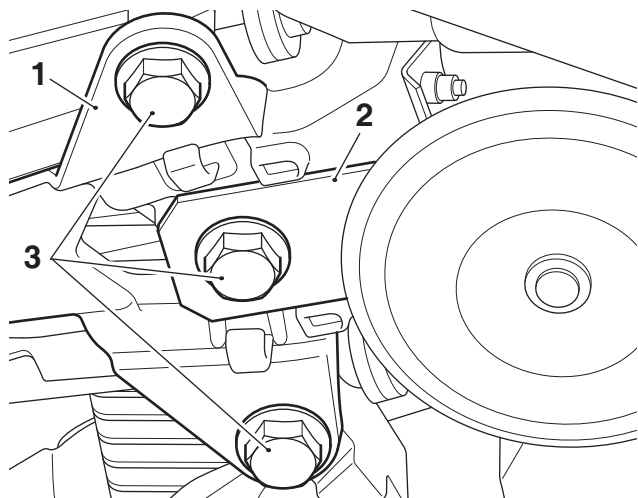
1. Beak  
2. Horn  
3. Horn harness  
4. Cable tidy moulding

12. Unclip the fog light connectors from the cable tidy moulding and remove the blanking plugs from the fog light connectors on the main wiring harness. Retain the blanking plugs for reuse if the motorcycle is to be returned to its original condition.



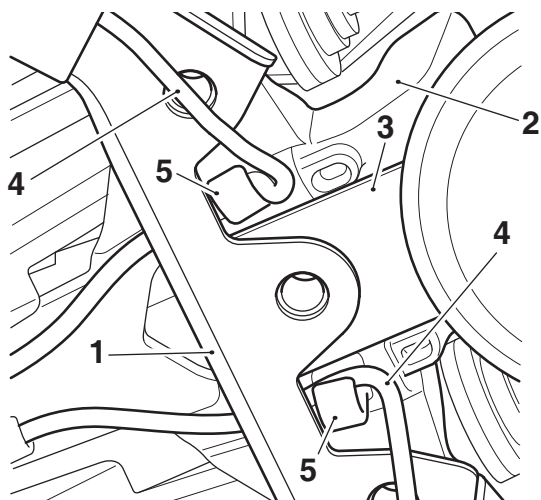
1. Cable tidy moulding  
2. Fog light connectors  
3. Blanking plugs

- Remove the three fixings securing the cable tidy moulding and horn bracket to the cockpit subframe. Retain the centre fixing for reuse, discard the outer fixings. Retain the horn bracket for reuse.



- Cable tidy moulding
- Horn bracket
- Fixings

- Position the mounting bar on to the cable tidy moulding, ensuring the horn bracket is refitted in its original position. Locate the harness from each fog light into the cable retaining features of the cable tidy moulding.

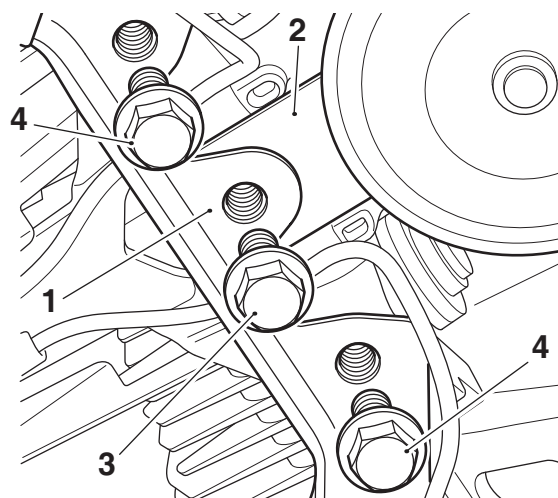


- Mounting bar
- Cable tidy moulding
- Horn bracket
- Fog light harnesses
- Retaining feature

### ! Caution

A wiring harness which becomes trapped or kinked during installation, or general motorcycle operation, may result in wiring harness damage and electrical malfunctions.

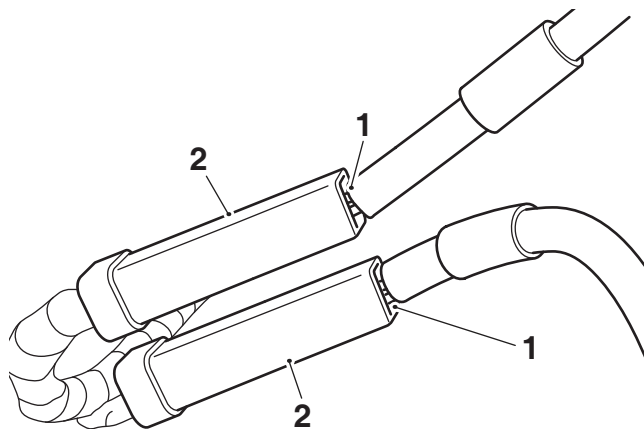
- Refit the original fixing to the mounting bar centre fixing and horn bracket. Fit the M8 x 20 mm encapsulated fixings from the kit into the mounting bar outer fixing positions. Ensure the fog light harnesses do not become trapped between the mounting bar and the cable tidy moulding.



- Mounting bar
- Horn bracket
- Original fixing
- Fixings M8 x 20 mm encapsulated

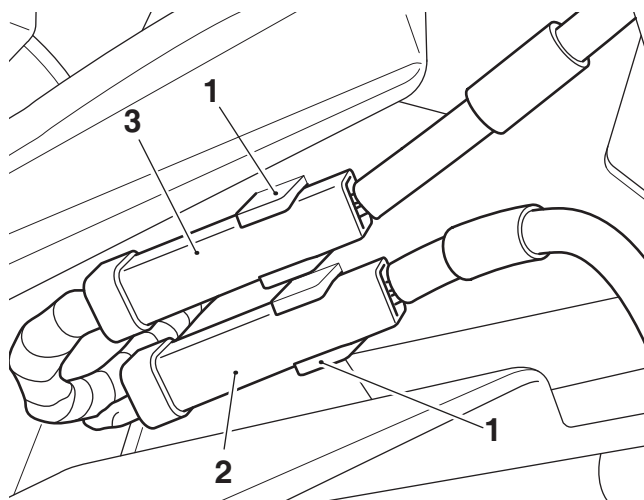
- Tighten the centre fixing to **18 Nm**. Tighten the outer fixings to **20 Nm**.

17. Connect the right hand fog light harness to the right hand connector on the main wiring harness and the left hand fog light harness to the left hand connector on the main wiring harness.



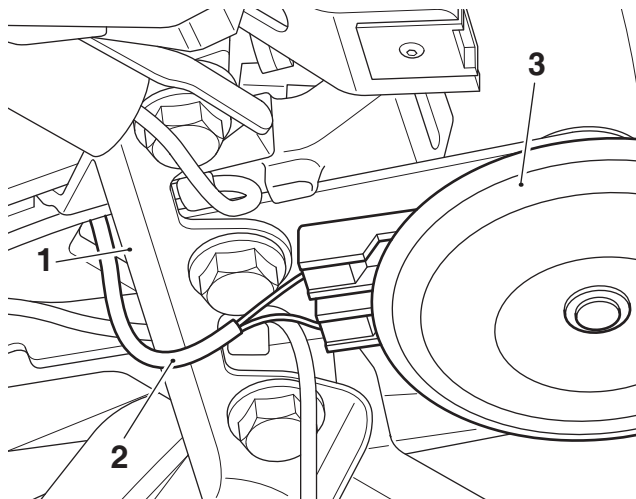
1. Fog light harness connector  
2. Main wiring harness connector

18. Place both fog light main wiring harness connectors back into the retaining features in the cable tidy moulding.



1. Retaining features, cable tidy moulding  
2. Fog light connector, left hand  
3. Fog light connector, right hand

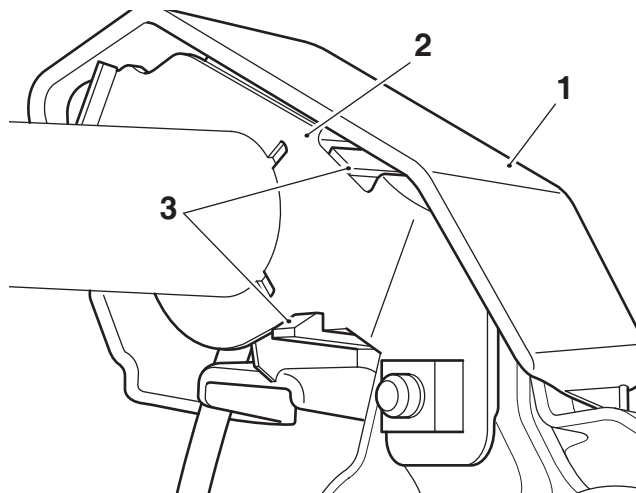
19. Reconnect the horn harness to the horn, noting the harness routing as shown below.



1. Mounting bar  
2. Horn harness  
3. Horn

20. Adjust the position of the left hand and right hand fog lights until the front face is vertical. Tighten the M5 x 20 mm fixings to **6 Nm**.

21. Collect the left hand end cap from the kit and fit it on to the mounting bar, as shown. Ensure the retaining features on the end cap have engaged correctly on the mounting bar.



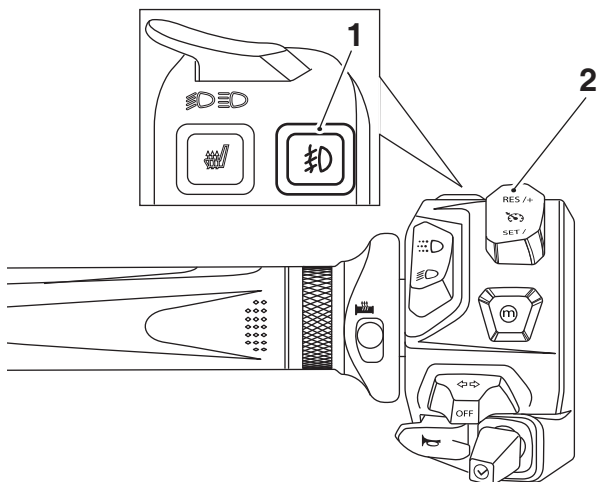
1. End cap, left hand  
2. Mounting bar  
3. Retaining features

22. Repeat step 21 for the right hand side.  
23. Reconnect the battery, as described in the Service Manual.  
24. Refit the rider and passenger seats, as described in the Service Manual.

## Fog Light System Testing

### Note:

- The fog lights switch is incorporated into the left hand switch housing, as shown.



1. Fog lights switch
2. Left hand switch housing

- The fog lights switch will only operate when the headlights are on.
- The fog lights switch will reset to OFF when the ignition is turned off, then on again.
- To turn the fog lights ON or OFF, with the headlights on, press and release the fog lights switch. When the fog lights are turned on the fog light indicator will illuminate in the multi-function display.

1. Operate the fog lights switch and check that the fog lights come on. While sitting on the motorcycle, check the fog light alignment against a wall. If the angle of the fog lights needs adjusting, repeat step 20.

## Operation

The fog lights will remain on when the engine is turned off using the engine stop switch. When the engine is not running turn off the ignition, or switch the fog lights off to avoid draining the battery.

The fog lights are protected by a chassis ECM which will automatically cut power in the event of an overload.

Power can be restored to the fog lights by turning the ignition switch off, then on again, provided that the condition that caused the fault has been rectified.

In the event of a more serious overload, fuse number PS1 protects the fog lights. Refer to the label in the fuse box lid for fuse amperage.



## Warning

If, after fitment of this accessory kit, you have any doubt about the performance of any aspect of the motorcycle, contact an authorised Triumph dealer and do not ride the motorcycle until the authorised dealer has declared it fit for use. Riding a motorcycle when there is any doubt as to any aspect of the performance of the motorcycle may result in loss of control of the motorcycle leading to an accident.



## Warning

Never ride an accessory equipped motorcycle at speeds above 80 mph (130 km/h).

The presence of accessories will cause changes in the stability and handling of the motorcycle. Failure to allow for changes in motorcycle stability may lead to loss of control or an accident.

Remember that the 80 mph (130 km/h) limit will be reduced by the fitting of non-approved accessories, incorrect loading, worn tyres, overall motorcycle condition and poor road or weather conditions.



## Warning

The motorcycle must not be operated above the legal road speed limit except in closed-course conditions.



## Warning

Only operate this Triumph motorcycle at high speed in closed-course, on-road competition or on closed-course racetracks. High-speed operation should only be attempted by riders who have been instructed in the techniques necessary for high speed riding and are familiar with the motorcycle's characteristics in all conditions.

High-speed operation in any other circumstances is dangerous and will lead to loss of motorcycle control and an accident.