



## Accessory Fitting Instructions

Thank you for choosing this Triumph genuine accessory kit. This accessory kit is the product of Triumph's use of proven engineering, exhaustive testing, and continuous striving for superior reliability, safety and performance.

Completely read all of these instructions before commencing the installation of the accessory kit in order to become thoroughly familiar with the kit's features and the installation process.

These instructions should be considered a permanent part of your accessory kit, and should remain with it even if your accessory equipped motorcycle is subsequently sold.

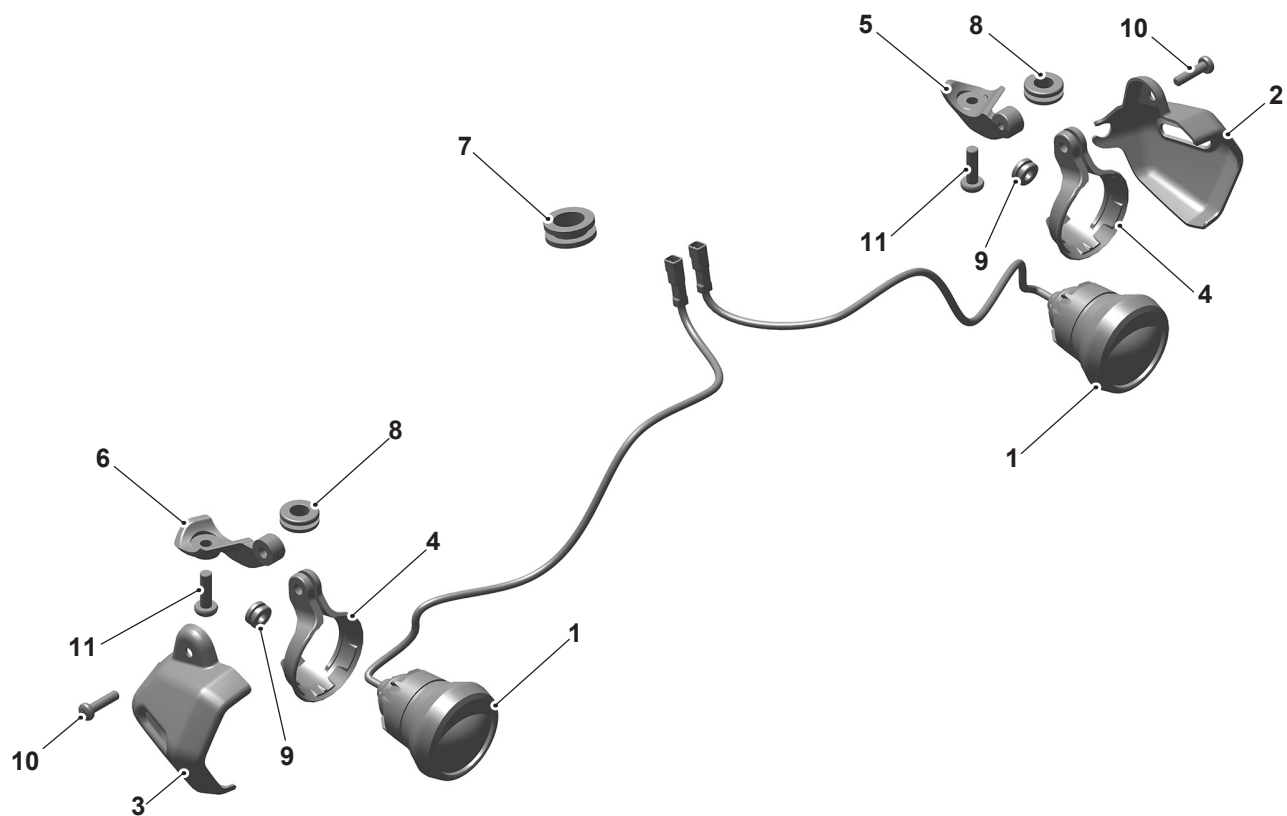
LED Fog Light Kits	
Kit Number	Models
LED Fog Light Kit	
A9830080	Tiger 900 GT to VIN BM5542, Tiger 900 GT Pro to VIN BM5558, Tiger 900 GT (LRH), Tiger 900 Rally, Tiger 900 Rally Pro to VIN BN8581
LED Fog Light Conversion Kit	
A9830210	Tiger 900 GT Pro to VIN BM5558, Tiger 900 Rally Pro to VIN BM8581, Tiger 900 Rally Aragon Edition

### NOTICE

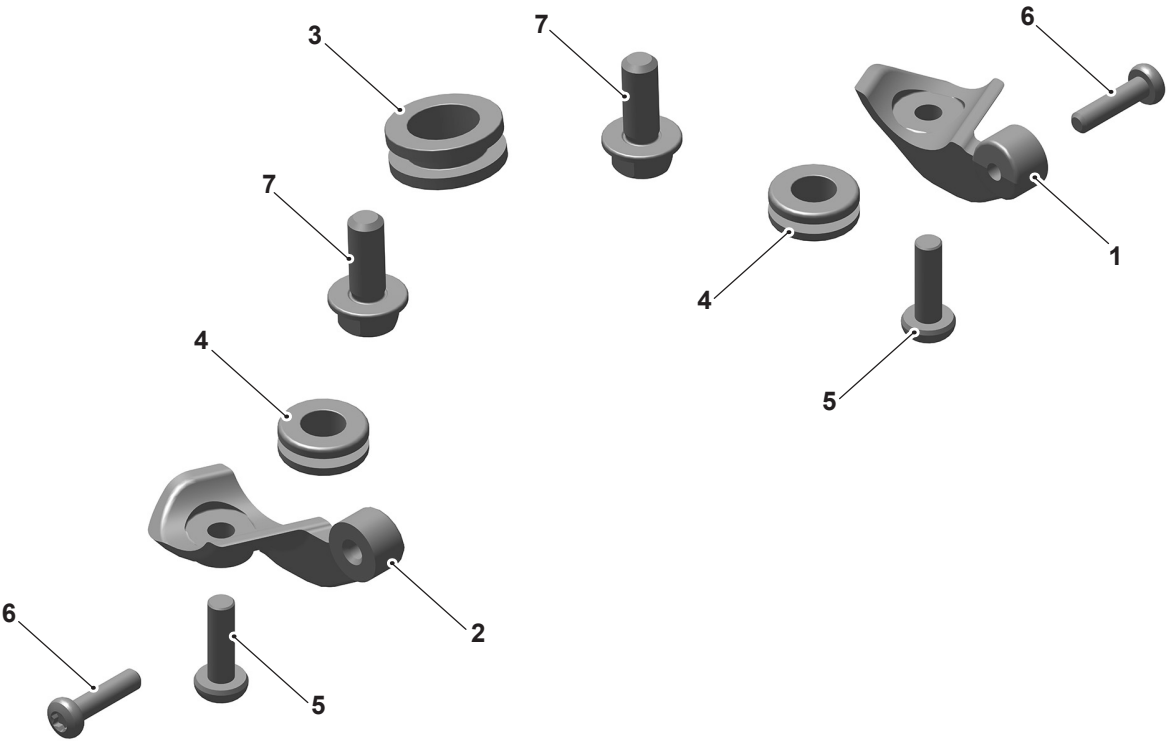
The LED Fog Light Conversion Kit can only be fitted when an accessory Upper Engine Bar Kit is fitted to the motorcycle.

Parts supplied

A9830080



1. Fog light, LED	1 off	7. Grommet, 26 mm	1 off
2. Shroud, left hand	1 off	8. Grommet, 20 mm	2 off
3. Shroud, right hand	1 off	9. Grommet, 13 mm	2 off
4. Plastic clamp	2 off	10. Fixing, M5 x 20 mm	2 off
5. Mounting clamp, left hand	1 off	11. Fixing, M6 x 20 mm	2 off
6. Mounting clamp, right hand	1 off		



1. Mounting clamp, left hand	1 off	5. Fixing, M6 x 20 mm	2 off
2. Mounting clamp, right hand	1 off	6. Fixing, M5 x 20 mm	2 off
3. Grommet, 26 mm	1 off	7. Fixing, M8 x 20 mm, encapsulated	2 off
4. Grommet, 20 mm	2 off		

### **⚠ WARNING**

Fit only genuine Triumph accessories to those models approved by Triumph as listed in the associated Triumph fitting instructions.

The accessory kits covered in this instruction are designed for use on specific models of Triumph motorcycle. The accessory kits and the models applicable are listed at the start of the instruction. They should never be fitted to any other Triumph model or to any other manufacturer's motorcycle.

Fitting an accessory kit to a Triumph model not listed, or to any other manufacturer's motorcycle, will affect the performance, stability and handling of the motorcycle.

Failure to follow the advice above may lead to loss of motorcycle control which could result in serious injury or death.

### **⚠ WARNING**

Always have Triumph approved parts, accessories and conversions fitted by a competent person with the specialist knowledge and technical understanding of motorcycles, such as an authorised Triumph dealer.

The fitment of parts, accessories and conversions by a person without the specialist knowledge and technical understanding of motorcycles may affect the handling, stability or other aspects of the motorcycle's operation.

Failure to follow the advice above may lead to loss of motorcycle control which could result in serious injury or death.

### **⚠ WARNING**

A torque wrench of known accurate calibration must be used when fitting this accessory kit.

Failure to tighten any of the fasteners to the correct torque specification may affect motorcycle performance, handling and stability.

Failure to follow the advice above may lead to loss of motorcycle control which could result in serious injury or death.

### **⚠ WARNING**

Make sure the motorcycle is stabilised and adequately supported.

Do not support the motorcycle on any ancillary component, the exhaust system or any other non structural parts of the motorcycle frame.

A correctly supported motorcycle will help prevent it from falling.

An unstable motorcycle may fall resulting in motorcycle damage, serious injury or death.

### **NOTICE**

Triumph offers a broad range of approved genuine accessories for your motorcycle.

We cannot therefore cover all possible equipment variations in these instructions. For removal and installation of Triumph Genuine Accessories, always refer to the instructions supplied with the respective accessory kit.

To obtain additional copies of any Triumph accessory instructions, visit [www.triumphinstructions.com](http://www.triumphinstructions.com) or contact your authorised Triumph dealer.

1. Remove the rider and passenger seats as described in the Service Manual.
2. Disconnect the battery, as described in the Service Manual.
3. Remove the front beak as described in the Service Manual.

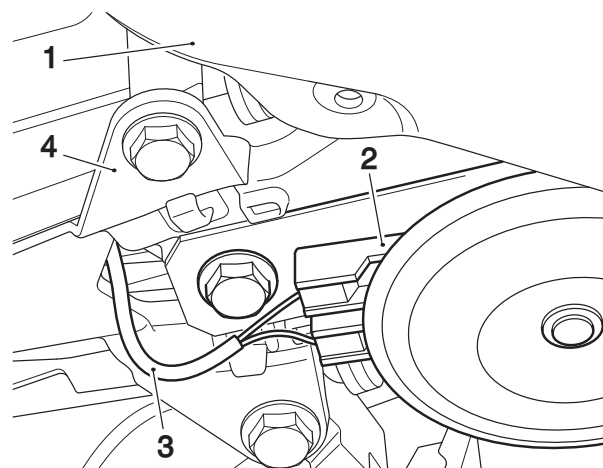
### **NOTICE**

If fitting the Fog Light Conversion Kit A9830210 continue from step 4.

### **NOTICE**

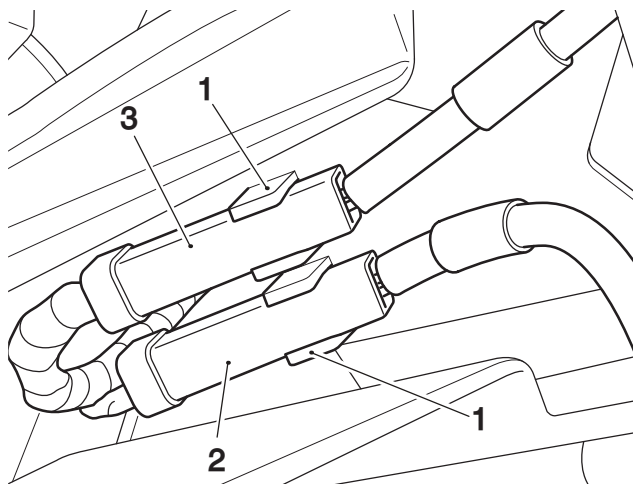
If not fitting the Fog Light Conversion Kit A9830210 continue from the note after step 14.

4. Disconnect the horn harness from the horn which is located behind the beak.



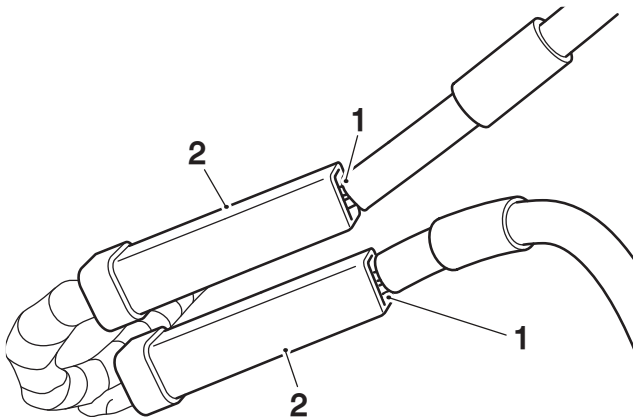
1. Beak
2. Horn
3. Horn harness
4. Cable tidy moulding

5. Detach the fog light connectors from the cable tidy moulding, located rearward of the horn.



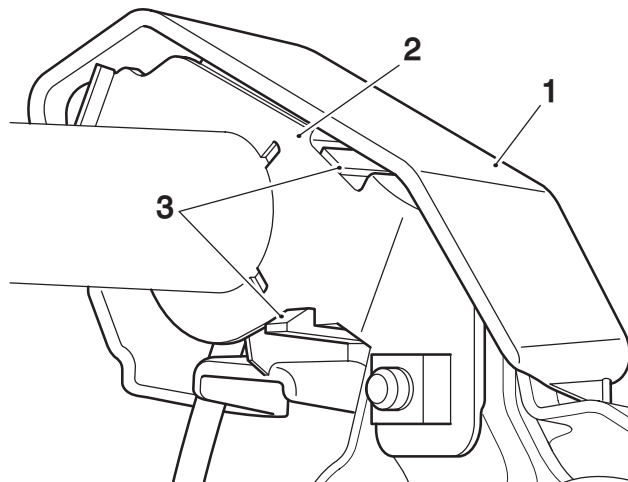
1. Cable tidy moulding  
2. Fog light connector, left hand  
3. Fog light connector, right hand

6. Disconnect the left and right hand fog lights from the main wiring harness connectors.



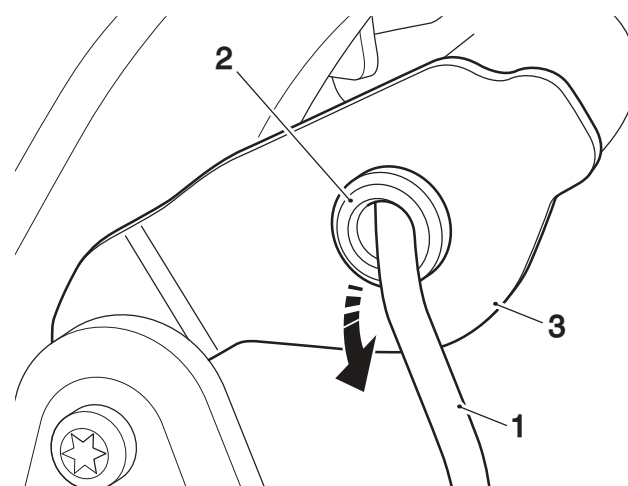
1. Fog light harness connector  
2. Main wiring harness connector

7. Remove the left hand end cap from the mounting bar by carefully levering back the retaining features on the end cap to disengage them from the mounting bar.



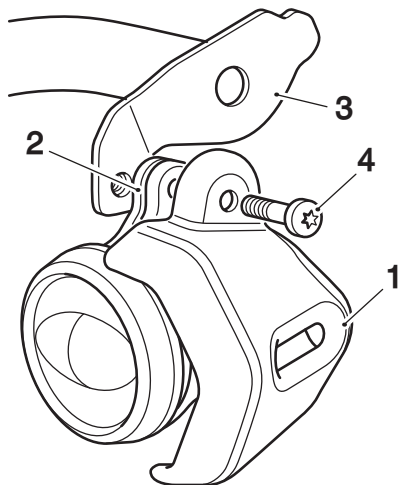
1. End cap, left hand  
2. Mounting bar  
3. Retaining features

8. Carefully pull the left hand fog light harness through the grommet and out of the mounting bar.



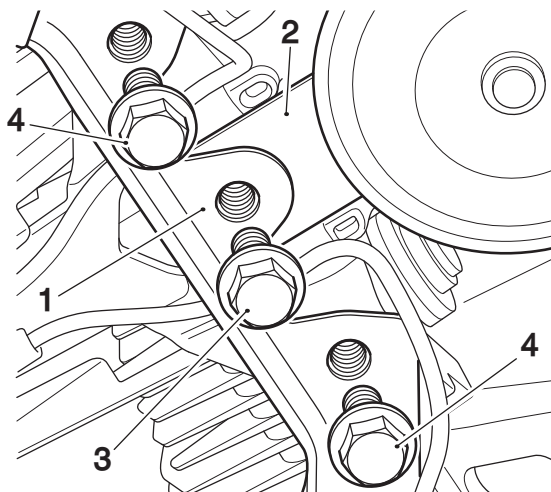
1. Fog light harness, left hand  
2. Grommet  
3. Mounting bar

9. Remove the left hand fog light shroud, plastic clamp and fog light from the mounting bar. Retain the fog light, plastic clamp and shroud for reuse, discard the fixing.



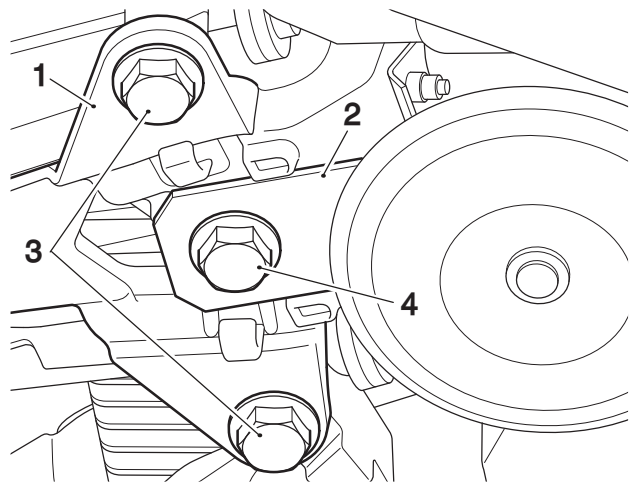
1. Fog light harness, left hand
2. Plastic clamp
3. Mounting bar
4. Fixing

10. Repeat steps 7 to 9 for the right hand side.
11. Remove the fog light mounting bar and horn bracket from the motorcycle. Retain the mounting bar for reuse if the motorcycle is to be returned to its original condition. Retain the horn and centre fixing for reuse, discard the outer fixings.



1. Mounting bar
2. Horn bracket
3. Centre fixing
4. Outer fixings

12. Collect the M8 x 20 mm encapsulated fixings from the kit and fit into the outer mounting points, as shown. Refit the horn bracket with the original centre fixing.



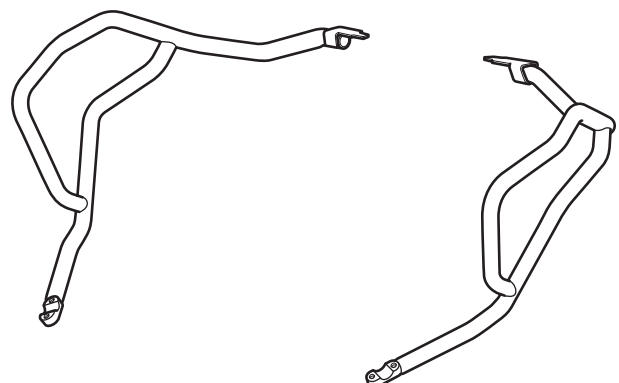
1. Cable tidy moulding
2. Horn bracket
3. Fixings, M8 x 20 mm, encapsulated
4. Outer fixings

13. Tighten the centre fixing to **18 Nm**. Tighten the outer fixings to **20 Nm**.
14. Reconnect the horn harness to the horn.

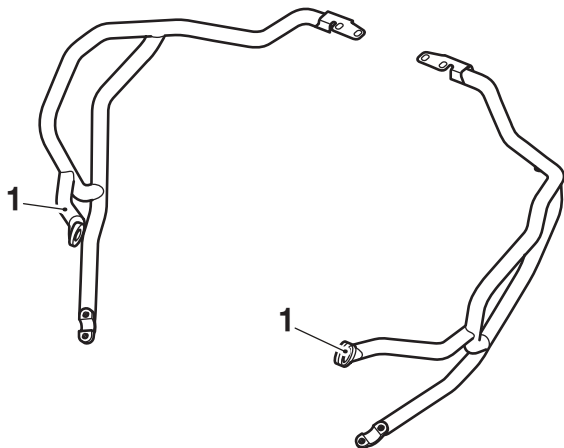
### NOTICE

There are two types of Accessory Upper Engine Bar Kits available. The kit may include upper engine bars without cylinder head third mounts, or with cylinder head third mounts as shown below.

### Upper Engine Bars without Cylinder Head Third Mounts



## Upper Engine Bars with Cylinder Head Third Mounts

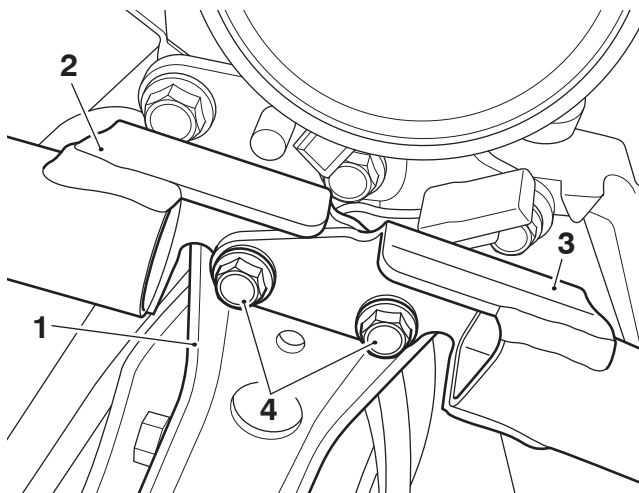


1. Engine bar third mount

### NOTICE

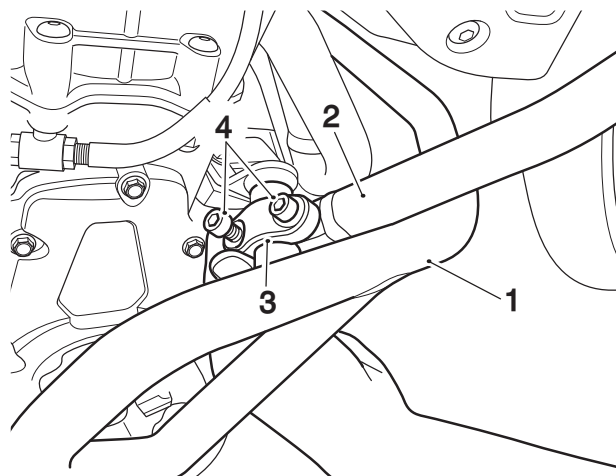
If upper engine bars are fitted to the motorcycle, continue from step 15. If upper engine bars are being fitted along with the fog light kit, continue from step 20.

15. Remove the fixings securing the upper engine bars to the front mounting bracket. Retain fixings for reuse.



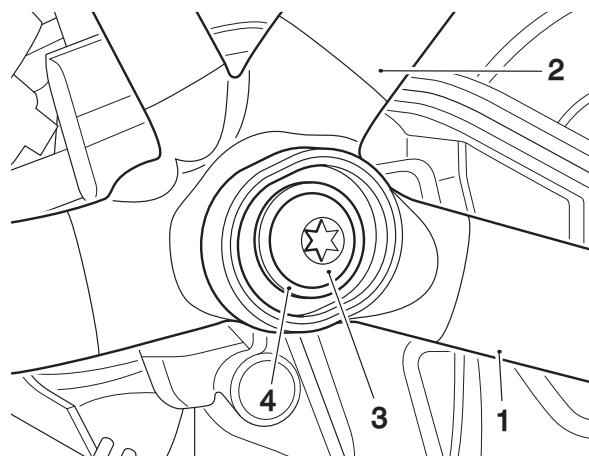
1. Front mounting bracket  
2. Upper engine bar, right hand  
3. Upper engine bar, left hand  
4. Fixings

16. Remove the front and rear clamp bolts securing the right hand side upper engine bar to the lower engine bar. Remove upper engine bar and retain with the fixings for reuse. Repeat for the left hand side.



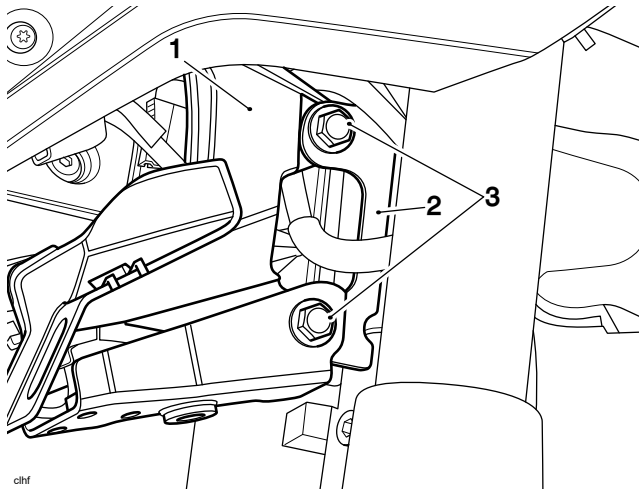
1. Lower engine bar  
2. Upper engine bar, right hand  
3. Clamp  
4. Fixings

17. If the engine bars fitted to the motorcycle include cylinder head third mounts, remove the M8 x 20 mm fixings and M8 washers from the left hand and right hand side of the motorcycle. Retain the fixings and washers for reuse.



1. Engine bar third mount (right hand side shown)  
2. Fixing, M8 x 20 mm  
3. Washer, M8

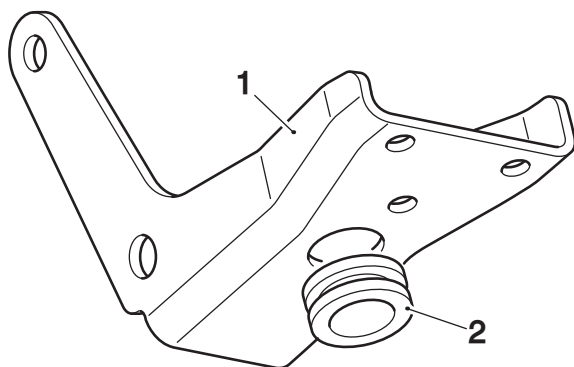
18. Remove the fixings securing the front mounting bracket and remove the mounting bracket. Retain mounting bracket and fixings for reuse.



1. Subframe mounting
2. Front mounting bracket
3. Fixings

#### Upper Engine Bars without Cylinder Head Third Mounts Only

19. Fit the Ø26 mm grommet from the kit into the front mounting bracket from the upper engine bar kit, as shown. Continue from step 26.

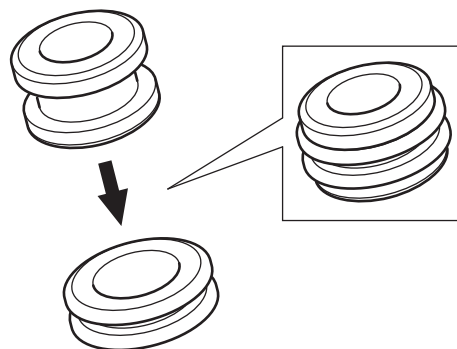


1. Front mounting bracket
2. Grommet, Ø26 mm

#### Upper Engine Bars with Cylinder Head Third Mounts Only

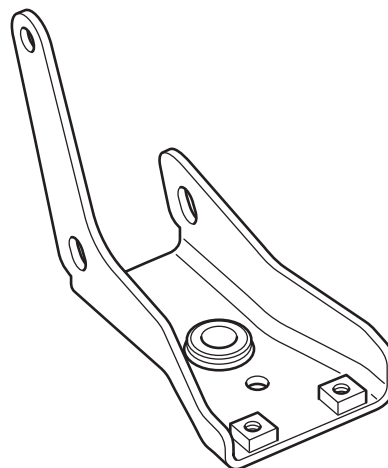
20. Do not use the Ø26 mm grommet from the fog light kit. Use the Ø 22 mm x 6 mm grommet and Ø 20 mm x 12 mm grommet, from the engine bar kit, as described below.

21. Making sure it locates correctly, fit the Ø 22 mm x 6 mm grommet on to the Ø 20 mm x 12 mm grommet, as shown.



1. Grommet, Ø22 mm x 6 mm
2. Grommet, Ø20 mm x 12 mm

22. Fit the grommet assembly into the large hole in the front mounting bracket, as shown. Make sure the Ø 22 mm x 6 mm grommet locates correctly in the mounting bracket.



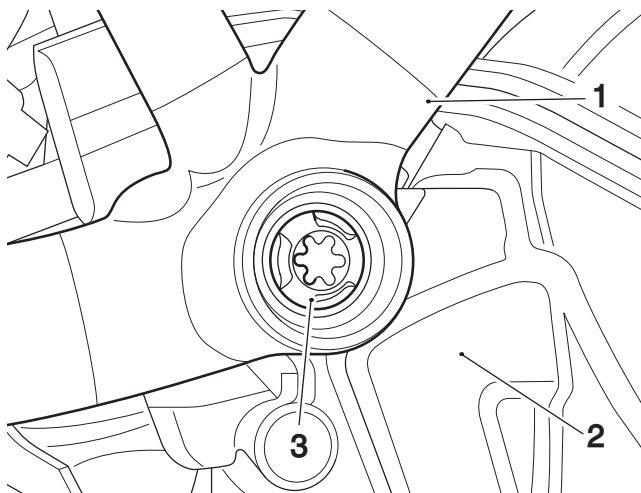
1. Front mounting bracket
2. Grommet, Ø 22 mm x 6 mm

#### NOTICE

If fitting the upper engine bar kit for the first time continue from step 23. If the upper engine bar kit has previously been fitted continue from step 26.

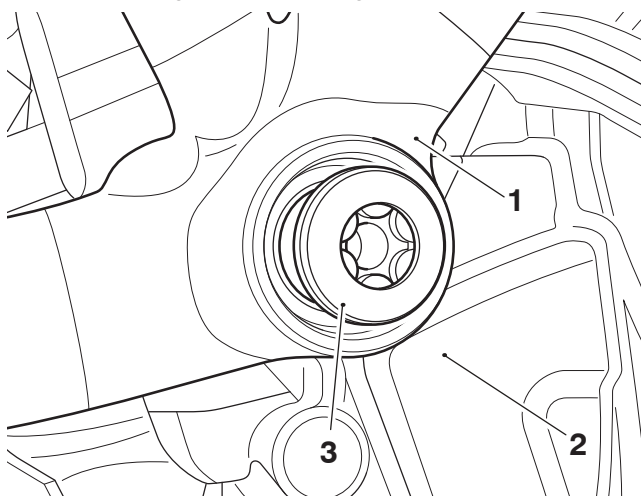


23. Remove the right hand side rear cylinder head fixing. Retain the fixing for reuse if the motorcycle is to be returned to its original condition.



1. Motorcycle frame  
2. Cylinder head  
3. Fixing

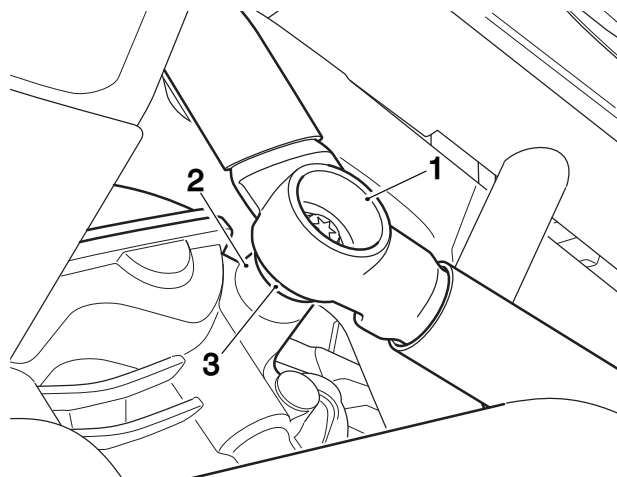
24. Fit one of the M10 x 35 mm shouldered fixings from the engine bar kit through the frame in to the threaded boss on the cylinder head, as shown. Tighten the fixing to **48 Nm**.



1. Motorcycle frame  
2. Cylinder head  
3. Fixing, M10 x 35 mm (shouldered)

## NOTICE

When removing the left hand side rear cylinder head fixing, if the spacer fitted between the motorcycle frame and cylinder head becomes displaced it must be repositioned correctly as shown below, before fitting the M10 x 35 mm shouldered fixing from the kit.

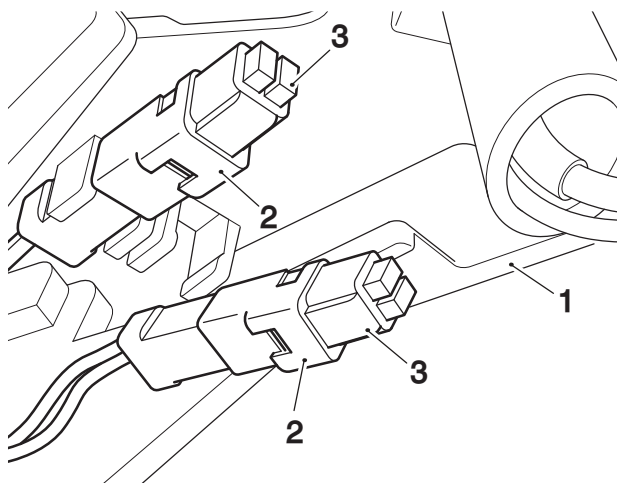


1. Motorcycle frame  
2. Cylinder head  
3. Spacer

25. Repeat steps 23 and 24 for the left hand side rear cylinder head fixing.

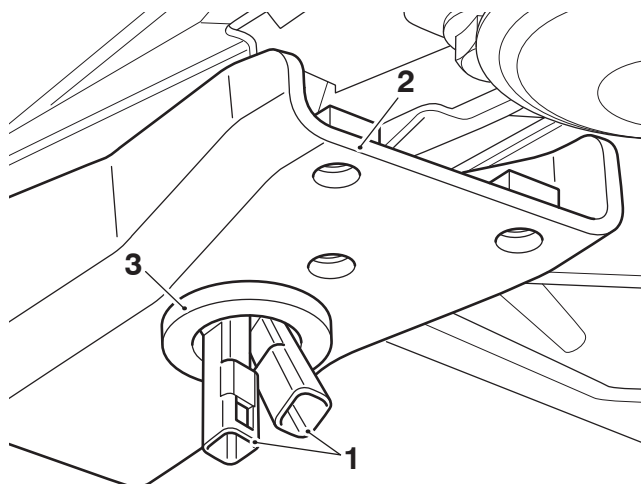
### Both Types Of Upper Engine Bars

26. Unclip the fog light connectors from the cable tidy moulding located rearward of the horn and remove the blanking plugs from the fog light connectors on the main wiring harness. Retain the blanking plugs for reuse if the motorcycle is to be returned to its original condition.



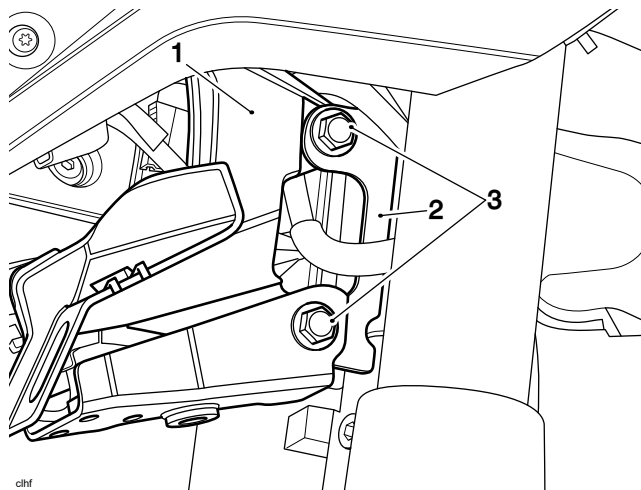
1. Cable tidy moulding  
2. Fog light connectors  
3. Blanking plugs

27. Route both fog light harness connectors through the grommet/s in the mounting bracket.



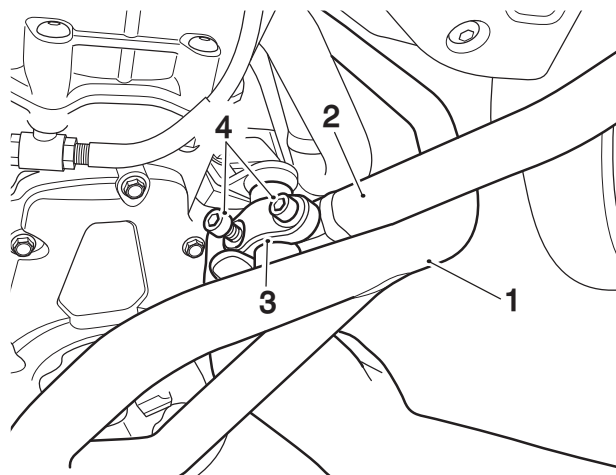
- 1. Fog light harness connectors
- 2. Mounting bracket
- 3. Grommet, (single Ø26 mm shown)

28. Fit the front mounting bracket onto the subframe mounting as shown. Secure with the original fixings and lock nuts. Tighten the fixings to **30 Nm**.



- 1. Sub-frame mounting
- 2. Mounting bracket
- 3. Fixings

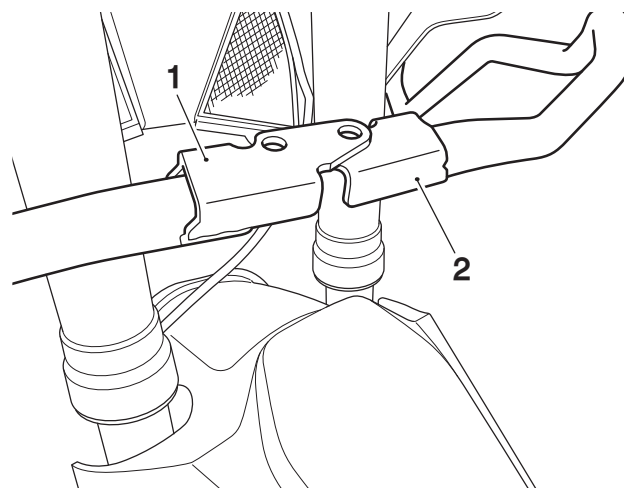
29. Position the right hand upper engine bar on to the lower engine bar on the right hand side of the motorcycle as shown below. Fit a clamp and two original M8 x 30 mm fixings to retain the upper engine bar. Do not fully tighten the fixings at this stage.



- 1. Lower engine bar
- 2. Upper engine bar, right hand
- 3. Clamp
- 4. Fixings, M8 x 30 mm

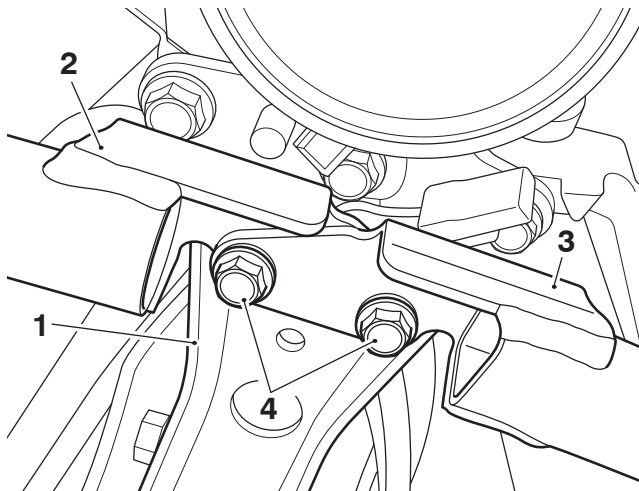
30. Repeat step 29 for the left hand upper engine bar.

31. Position the left hand upper engine bar front mounting under the right hand upper engine bar front mounting, as shown.



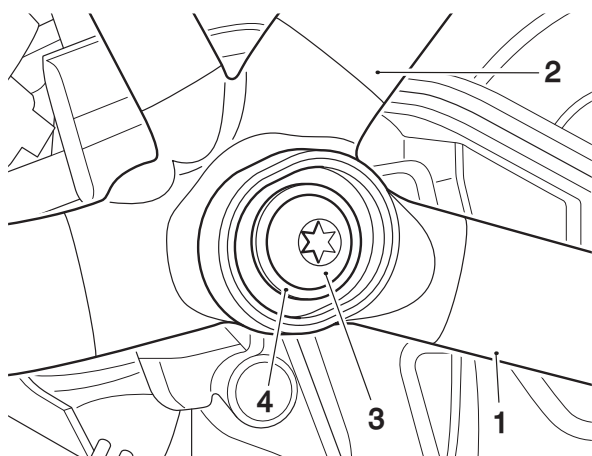
- 1. Upper engine bar, right hand
- 2. Upper engine bar, left hand

32. Align the right hand and left hand upper engine bars with the front mounting bracket and fit the original M6 x 20 mm fixings. Do not fully tighten the fixings at this stage.



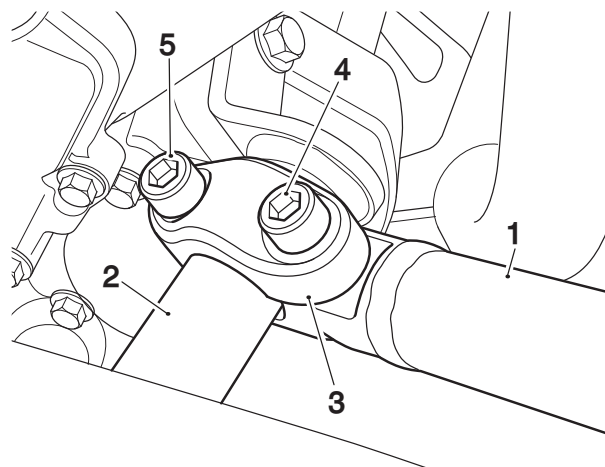
- 1. Front mounting bracket
- 2. Upper engine bar, right hand
- 3. Upper engine bar, left hand
- 4. Fixings, M6 x 20 mm

33. If the upper engine bar includes cylinder head third mounting positions, align the right hand side and left hand side engine bar third mounts with the rear cylinder head mountings on the motorcycle frame and fit either the original fixings and washers, or accessory engine bar kit M8 x 20 mm fixings and M8 washers. Do not fully tighten the fixings at this stage.



- 1. Engine bar third mount (right hand side shown)
- 2. Motorcycle frame
- 3. Fixing, M8 x 20 mm
- 4. Washer, M8

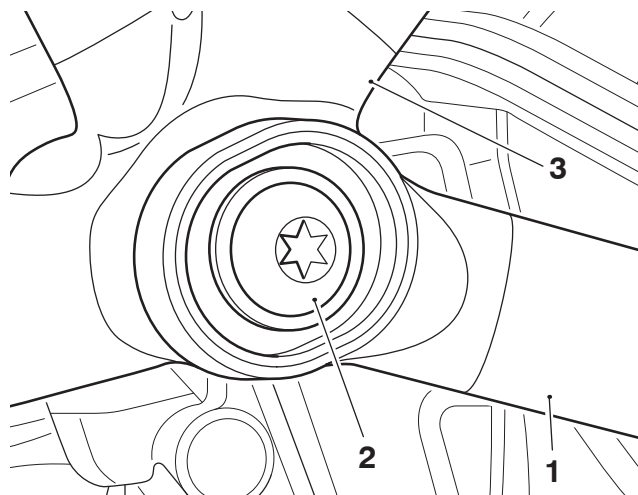
34. Tighten the right hand engine bar clamp front fixing first to **20 Nm**, then tighten the clamp rear fixing to **20 Nm**. Repeat for the left hand side.



- 1. Upper engine bar
- 2. Lower engine bar
- 3. Clamp
- 4. Fixing, front
- 5. Fixing, rear

35. Tighten the upper engine bars front mounting bracket fixings to **14 Nm**.

36. If the accessory upper engine bar includes cylinder head third mounting positions tighten the right hand and left hand side engine bar third mount M8 x 20 mm fixings to **25 Nm**.



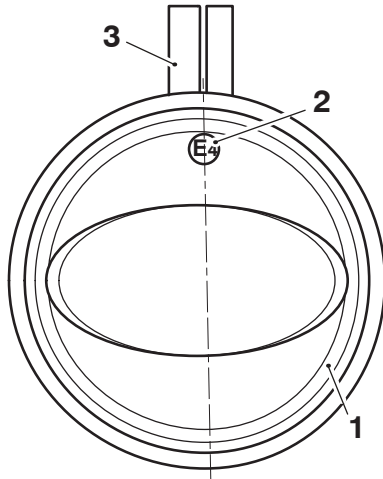
- 1. Engine bar third mount (right hand side shown)
- 2. Fixing, M8 x 20 mm
- 3. Motorcycle frame

#### Fitment of the Fog Light Kit A9830080

37. Collect the fog lights and plastic clamps from the kit.

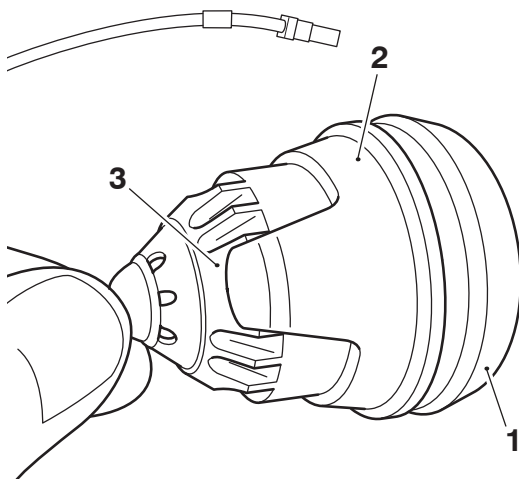
## NOTICE

When fitting the plastic clamps to the fog lights the E marking on the fog light lens should always be positioned centrally at the top of the fog light, in line with the plastic clamp mounting, as shown below.



- 1. Fog light
- 2. E marking
- 3. Plastic clamp mounting

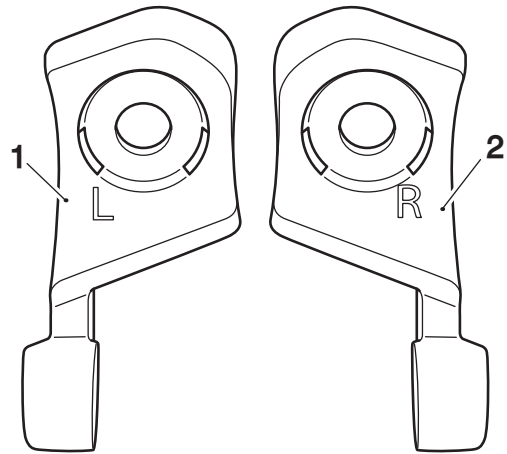
38. Fit the plastic clamps onto the fog lights as shown making sure the lower section of the plastic clamp locates in the recess in the underside of the fog light body.



- 1. Fog light
- 2. Plastic clamp, lower section
- 3. Recess, fog light body

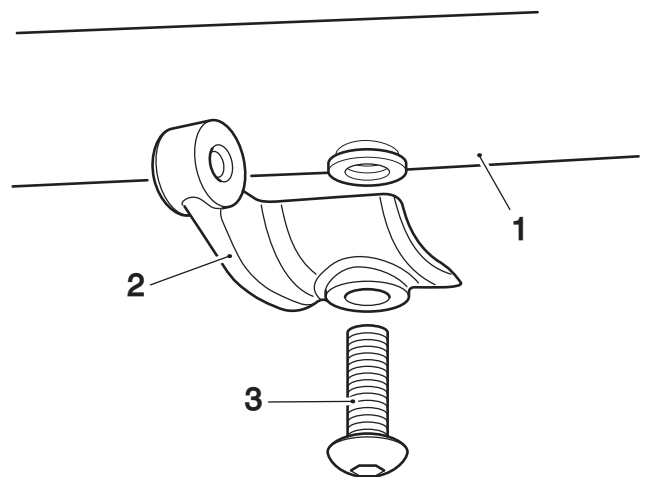
## NOTICE

The mounting clamps are marked with L (left hand) and R (right hand)



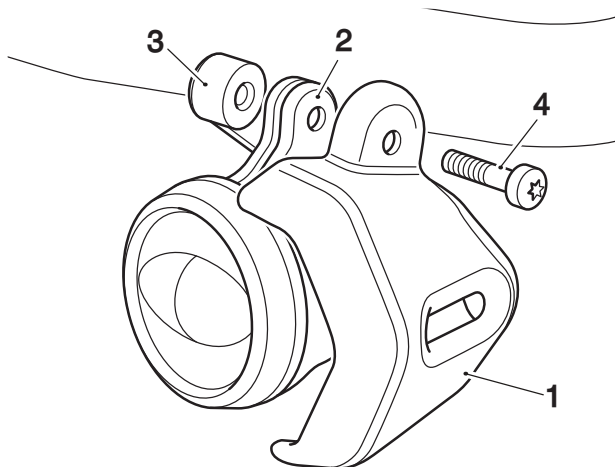
- 1. Mounting clamp, left hand
- 2. Mounting clamp, right hand

39. Fit the left hand mounting clamp from the kit to the left hand upper engine bar as shown. Fit an M6 x 20 mm fixing from the kit. Tighten to 8 Nm.



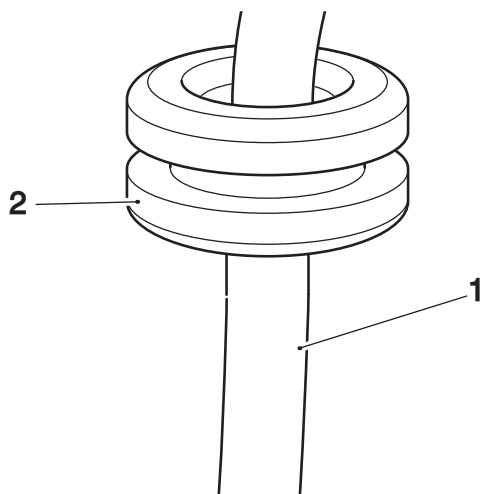
- 1. Upper engine bar, left hand
- 2. Mounting clamp, right hand
- 3. Fixing, M6 x 20 mm

40. Align the fixing holes of the left hand fog light shroud, plastic clamp and left hand mounting clamp in the orientation shown and fit an M5 x 20 mm fixing from the kit. Do not fully tighten the fixing at this stage.



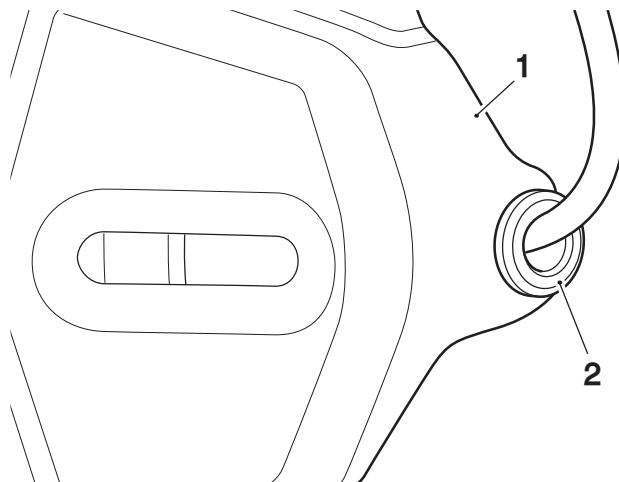
- 1. Fog light shroud, left hand
- 2. Plastic clamp
- 3. Mounting clamp
- 4. Fixing, M5 x 20 mm

41. Collect a Ø13 mm grommet from the kit and place over the left hand fog light harness.



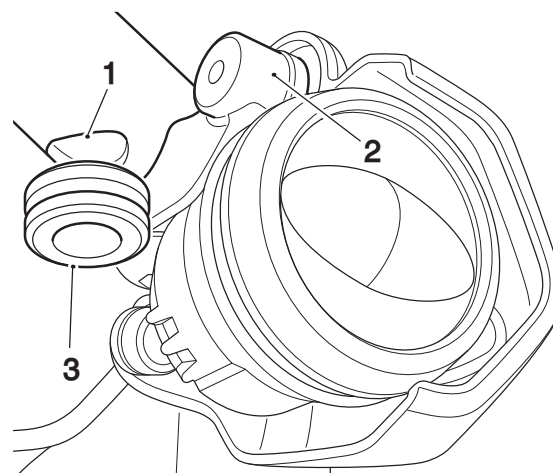
- 1. Fog light harness
- 2. Grommet, Ø13 mm

42. Locate the grommet into the rear of the left hand fog light shroud, as shown.



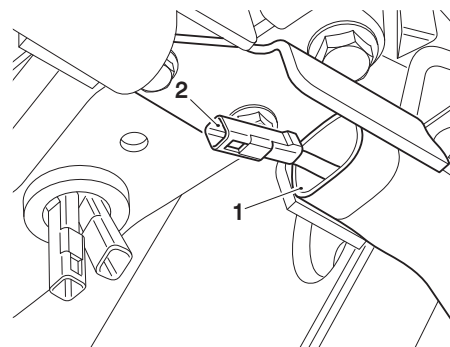
- 1. Fog light shroud
- 2. Grommet

43. Collect a Ø20 mm grommet from the kit and locate it into the hole in the upper engine bar next to the left hand fog light mounting clamp.



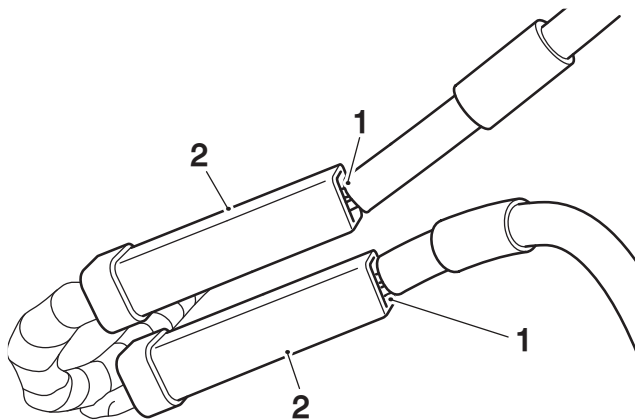
- 1. Hole, upper engine bar
- 2. Mounting clamp
- 3. Grommet, Ø20 mm

44. Route the left hand fog light harness through the grommet in the upper engine bar until it exits the open end of the engine bar as shown.



- 1. Upper engine bar, left hand
- 2. Fog light harness, left hand

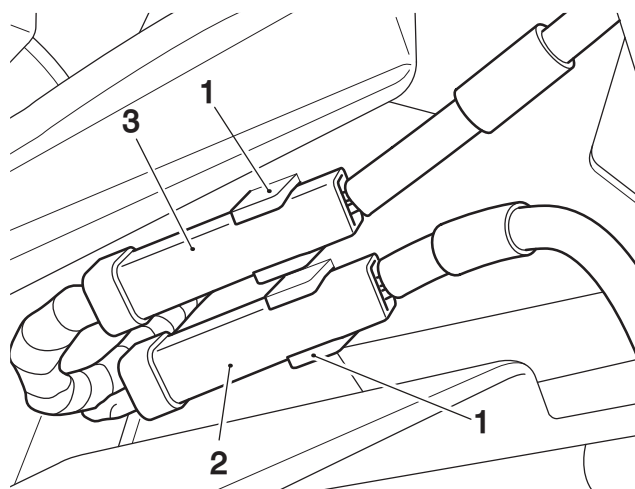
45. Repeat steps 39 to 44 for the right hand side.
46. Connect the right hand fog light harness to the right hand connector on the main wiring harness and the left hand fog light harness to the left hand connector on the main wiring harness.



1. Fog light harness connector
2. Main wiring harness connector

#### Upper Engine Bars without Cylinder Head Third Mounts Only

47. Place both fog light main wiring harness connectors back into the retaining features in the cable tidy moulding.

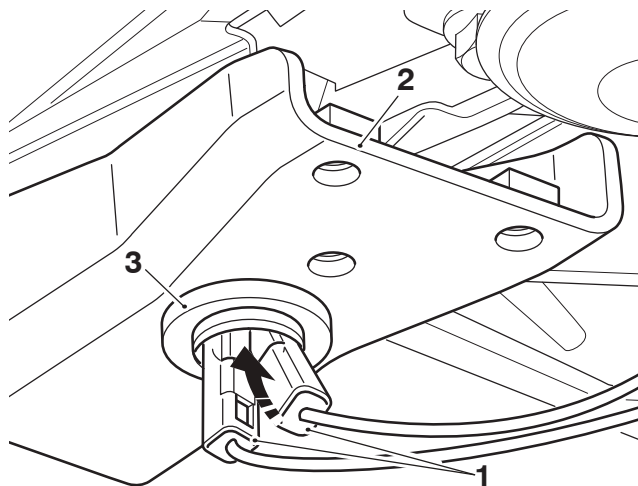


1. Retaining features, cable tidy moulding
2. Fog light connector, left hand
3. Fog light connector, right hand

48. Feed the excess fog light harness back through the grommet in the front mounting bracket.

#### Upper Engine Bars with Cylinder Head Third Mounts Only

49. Feed the excess fog light harness and both fog light main wiring harness connectors back through the grommet assembly in the front mounting bracket. Note, the engine bars are not shown for clarity.



1. Main wiring harness connector
2. Front mounting bracket
3. Grommet assembly

#### Both Types Of Upper Engine Bars

50. Adjust the position of the left hand and right hand fog lights until the front face is vertical. Tighten the M5 x 20 mm fixings to **6 Nm**.
51. Refit the beak assembly as described in the Service Manual.
52. Reconnect the battery, as described in the Service Manual.
53. Refit the rider and passenger seats, as described in the Service Manual.

#### Fog Light System Testing



## NOTICE

### Fog Light System Testing

The fog light switch will only operate when the headlights are on.

The fog light switch will reset to OFF when the ignition is turned off, then on again.

To turn the fog lights ON or OFF, with the headlights on, press and release the fog light switch. When the fog lights are turned on the fog light indicator will illuminate in the multi-function display.



1. Fog light switch
2. Left hand switch housing

Operate the fog light switch and check that the fog lights come on. While sitting on the motorcycle, check the fog light alignment against a wall. If the angle of the fog lights needs adjusting, repeat step 50.

### Operation

The fog lights will remain on when the engine is turned off using the engine stop switch. When the engine is not running turn off the ignition, or switch the fog lights off to avoid draining the battery.

The fog lights are protected by a chassis ECM which will automatically cut power in the event of an overload.

Power can be restored to the fog lights by turning the ignition switch off, then on again, provided that the condition that caused the fault has been rectified.

In the event of a more serious overload, fuse number PS 1 protects the fog lights. Refer to the label in the fuse box lid for fuse amperage.

## ⚠ WARNING

After fitting the accessory kit the motorcycle will exhibit new handling characteristics.

Operate the motorcycle in a safe area free from traffic to gain familiarity with any new characteristics.

Operation of the motorcycle when not familiar with any new handling characteristics may lead to loss of motorcycle control which could result in serious injury or death.

## ⚠ WARNING

If, after fitting this accessory kit, you have any doubt about the performance of any aspect of the motorcycle, contact a competent person with the specialist knowledge and technical understanding of motorcycles, such as an authorised Triumph dealer.

Riding a motorcycle when there is any doubt as to any aspect of the performance of the motorcycle may lead to loss of motorcycle control which could result in serious injury or death.

## ⚠ WARNING

Never ride an accessory-equipped motorcycle at speeds above 80 mph (130 km/h).

Remember that the 80 mph (130 km/h) limit will be reduced by the fitting of non-approved accessories, incorrect loading, worn tyres, overall motorcycle condition and poor road or weather conditions.

The presence of accessories will cause changes in the stability and handling of the motorcycle. Failure to allow for changes in motorcycle stability may lead to loss of motorcycle control which could result in serious injury or death.

## ⚠ WARNING

High-speed operation should only be attempted by riders who have been instructed in the techniques necessary for high-speed riding and are familiar with the motorcycle's characteristics in all conditions.

Only operate this Triumph motorcycle at high speed in closed-course, on-road competition or on closed-course racetracks.

High-speed operation in any other circumstances is dangerous and may lead to loss of motorcycle control which could result in serious injury or death.

---

***NOTICE***

The motorcycle must not be operated above the legal road speed limit except in closed-course conditions.