



## Accessory Fitting Instructions

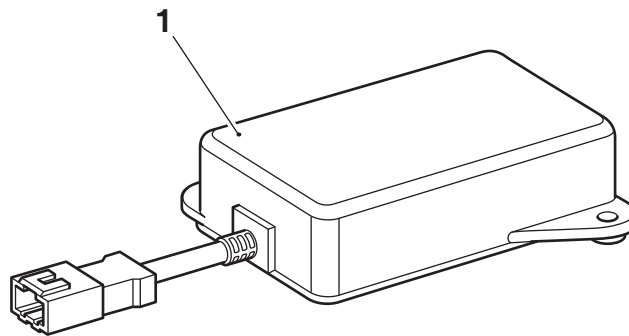
My Triumph Connectivity Module	
Kit Number	Models Affected
A9820200	Street Triple RS from VIN 966534 up to VIN BF0949
To be used with the following fitting kit.	
Fitting Kit	
Kit Number	Models Affected
A9828051	Street Triple RS from VIN 966534 up to VIN BF0949

Thank you for choosing this Triumph genuine accessory kit. This accessory kit is the product of Triumph's use of proven engineering, exhaustive testing, and continuous striving for superior reliability, safety and performance.

Completely read all of these instructions before commencing the installation of the accessory kit in order to become thoroughly familiar with the kit's features and the installation process.

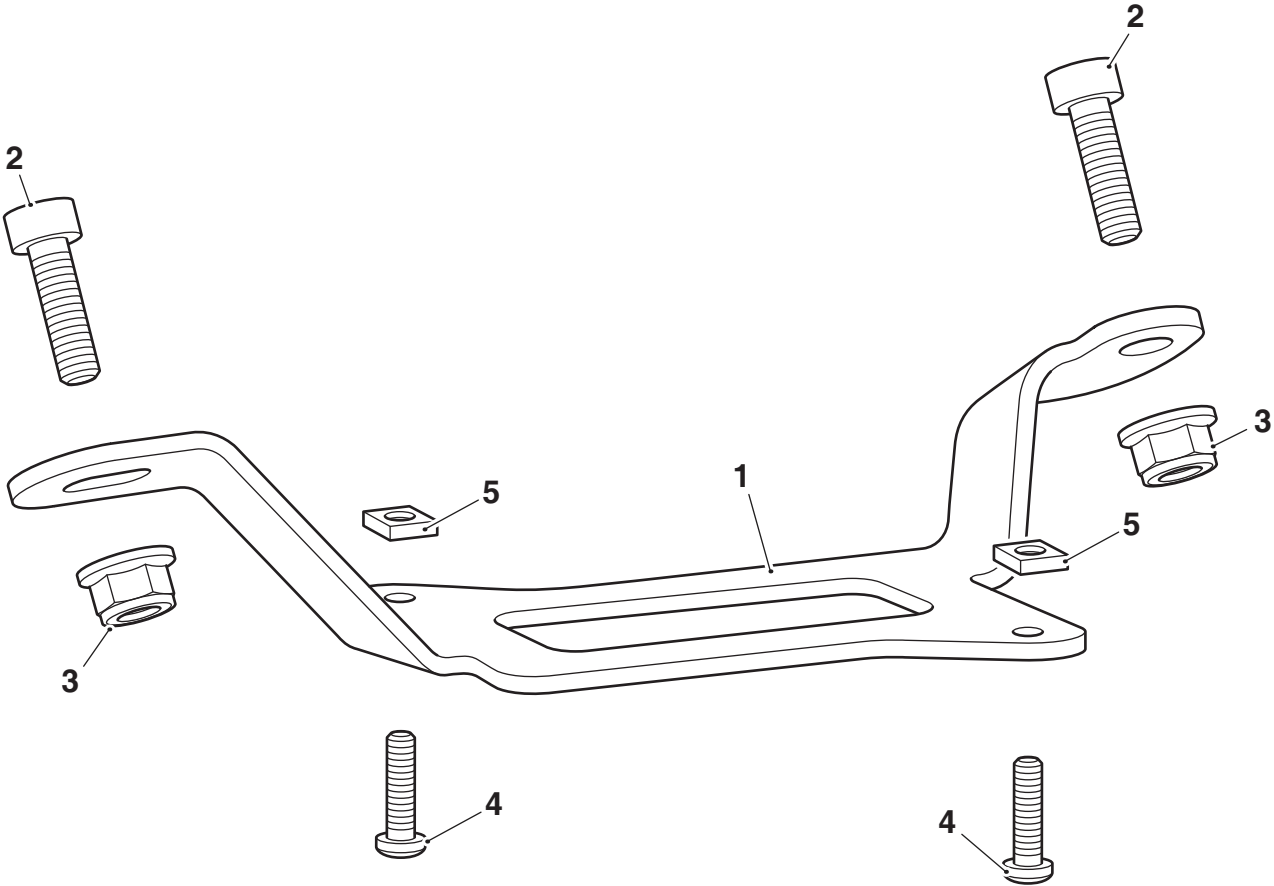
These instructions should be considered a permanent part of your accessory kit, and should remain with it even if your accessory equipped motorcycle is subsequently sold.

### Parts Supplied: A9820200



1. Connectivity module	1 off		
------------------------	-------	--	--

Parts Supplied: A9828051



1. Mounting bracket	1 off	4. Fixing, M3 x 12 mm	2 off
2. Fixing, M5	2 off	5. Nut, M3	2 off
3. Lock nut, M5	2 off		



## Warning

The accessory kits covered in this instruction are designed for use on specific models of Triumph motorcycle. The accessory kits and the models applicable are listed at the start of the instruction. They should not be fitted to any other Triumph model or to any other manufacturer's motorcycle. Fitting an accessory kit to a Triumph model not listed, or to any other manufacturer's motorcycle will affect the performance, stability and handling of the motorcycle. This may affect the rider's ability to control the motorcycle and could cause an accident.



## Warning

Always have Triumph approved parts, accessories and conversions fitted by a trained technician of an authorised Triumph dealer. The fitment of parts, accessories and conversions by a technician who is not of an authorised Triumph dealer may affect the handling, stability or other aspects of the motorcycle's operation which may result in loss of motorcycle control and an accident.



## Warning

A torque wrench of known accurate calibration must be used when fitting this accessory kit. Failure to tighten any of the fasteners to the correct torque specification may result in loss of motorcycle control and an accident.



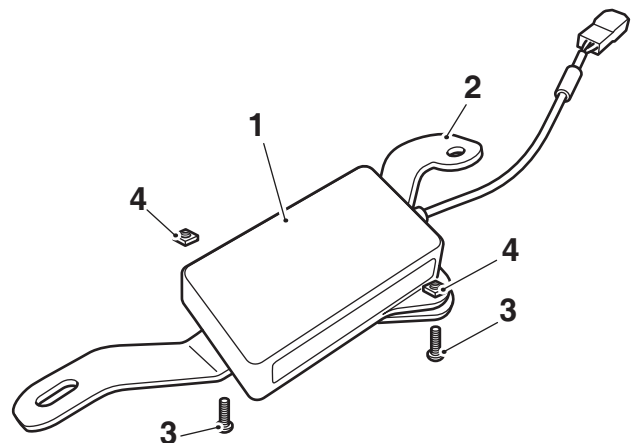
## Warning

Make sure the motorcycle is stabilised and adequately supported. Do not support the motorcycle on any ancillary component, the exhaust system or any other non structural parts of the motorcycle frame. A correctly supported motorcycle will help prevent it from falling. An unstable motorcycle may fall, causing injury to the operator or damage to the motorcycle.

### Note:

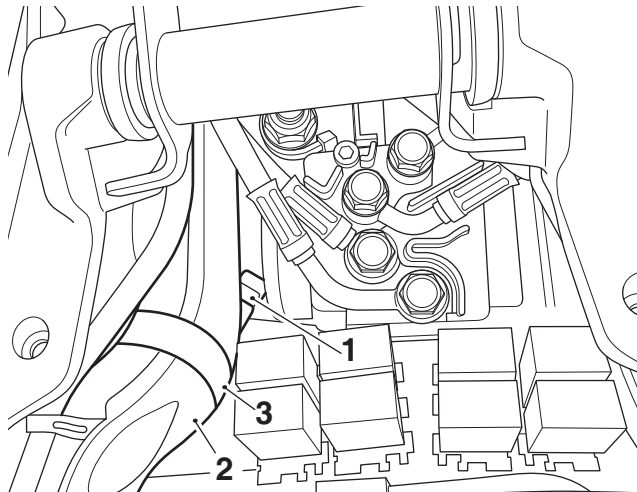
- Triumph offers a broad range of approved genuine accessories for your motorcycle. We cannot therefore cover all possible equipment variations in these instructions. For removal and installation of Triumph Genuine Accessories, always refer to the instructions supplied with the respective accessory kit. To obtain additional copies of any Triumph accessory instructions, visit [www.triumphinstructions.com](http://www.triumphinstructions.com) or contact your authorised Triumph dealer.

- Remove the rider and passenger seats, or seat cowl where fitted, as described in the Service Manual.
- Disconnect the battery, as described in the Service Manual.
- Fit the connectivity module on to the mounting bracket in the orientation shown. Fit the M3 x 12 mm fixings and M3 nuts provided making sure the fixings are fitted from the underside of the mounting bracket, as shown. Tighten the fixings to **1 Nm**.



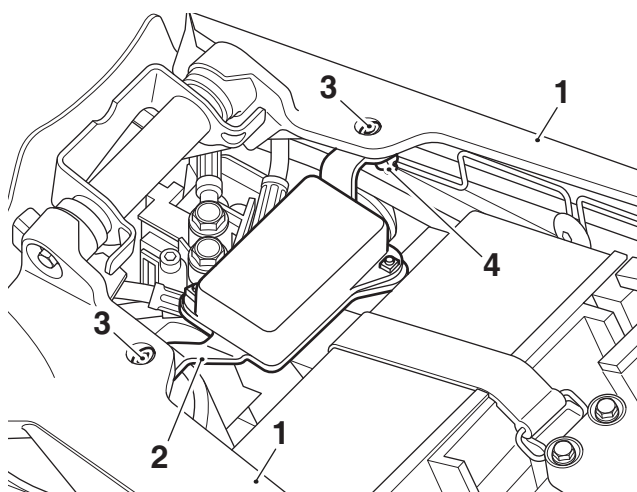
- Connectivity module
- Mounting bracket
- Fixings, M3 x 12 mm
- Nuts, M3

4. The main wiring harness connectivity module connector is taped to the harness conduit on the left hand side of the motorcycle. Remove the tape to access the connector. Remove the blanking plug from the connector. Retain the blanking plug for reuse if the motorcycle is to be returned to its original condition.



1. Connectivity module connector, main wiring harness
2. Harness conduit
3. Tape

5. Connect the connectivity module wiring connector to the main wiring harness connector.
6. Fit the connectivity module mounting bracket to the motorcycle rear subframe in the position and orientation shown. Fit the M5 fixings and M5 lock nuts provided. Tighten the fixings to **3 Nm**.



1. Motorcycle rear subframe
2. Connectivity module mounting bracket
3. Fixings, M5
4. Lock nuts, M5 (right hand side shown)

7. Reconnect the battery, as described in the Service Manual.

8. Refit the rider and passenger seats, or seat cowl where fitted, as described in the Service Manual.
9. Refer to appendix A for software installation.
10. Print out appendix B and hand to the customer.



### Warning

Never ride an accessory equipped motorcycle at speeds above 80 mph (130 km/h).

The presence of accessories will cause changes in the stability and handling of the motorcycle. Failure to allow for changes in motorcycle stability may lead to loss of control or an accident.

Remember that the 80 mph (130 km/h) limit will be reduced by the fitting of non-approved accessories, incorrect loading, worn tyres, overall motorcycle condition and poor road or weather conditions.



### Warning

The motorcycle must not be operated above the legal road speed limit except in closed course conditions.



### Warning

Only operate this Triumph motorcycle at high speed in closed course, on-road competition or on closed course racetracks. High speed operation should only be attempted by riders who have been instructed in the techniques necessary for high speed riding and are familiar with the motorcycle's characteristics in all conditions.

High speed operation in any other circumstances is dangerous and will lead to loss of motorcycle control and an accident

---

## Appendix A - Connectivity Module Software Installation and Setup

### **Caution**

Do not interrupt or cancel calibration downloads before they have completed.

If a calibration download is cancelled or interrupted before it has completed, the Electronic Control Module (ECM) will not operate in the normal way. This is because the operating system has been erased from ECM memory and has not yet been fully replaced. Under these circumstances, it will not be possible to use Automatic Model Detection when restarting the calibration download.

Turn the motorcycle ignition off for at least 60 seconds to allow the electronic systems to power down, then restart the calibration download using Manual Model Selection.

If a calibration download fails to restart, it may be necessary to follow a specific recovery process.

### **Introduction**

The connectivity module software installation and setup process must be completed using the Triumph Diagnostic Tool.

The instruction below details the steps necessary to complete the software installation and setup process.

### **Preparation**

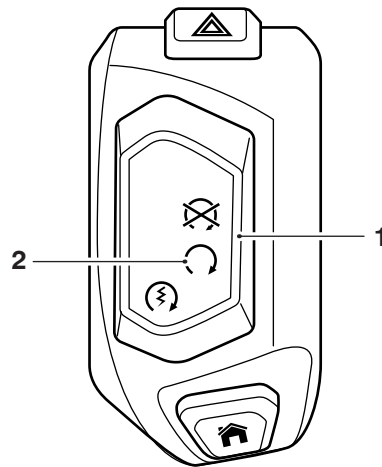
Download and install the latest version of the Triumph Diagnostic Tool to your computer as described in the Triumph Diagnostic Tool Installation Guide.

### **Note:**

- **It can take up to 50 minutes to complete this procedure depending on the Connectivity Module and Instrument calibration updates required.**
  - **Please take the following precautions to avoid accidental disruption of the calibration downloads performed during this process.**
1. If using a laptop computer to run the diagnostic software, make sure the laptop battery is fully charged. Connect a charger to avoid draining the laptop battery.
  2. Disable any sleep and screen saver settings. The PC/laptop must remain turned on and awake for the duration of the process.
  3. Make sure all other PC/laptop applications (including Internet browsers) are closed down.
  4. Make sure the motorcycle battery is fully charged (battery voltage of at least 12.8 Volts). Connect an approved battery charger (suitable for use with maintenance free batteries) to maintain the battery charge during this process.
  5. During calibration download, DO NOT do the following unless instructed to do so by the diagnostic tool:
    - Turn the ignition OFF.
    - Switch the engine stop switch to a different position.
    - Disconnect the diagnostic interface.

### Preliminary Steps

1. Install the connectivity module as described in the Accessory Fitting Instructions.
2. Connect the Triumph diagnostic tool to the motorcycle and turn the ignition ON.
3. Make sure the engine stop switch is in the RUN (ON) position.



1. **Engine stop switch**
2. **RUN (ON) position**

### Core activity

1. Navigate to CHASSIS DIAGNOSTICS - INSTRUMENT DIAGNOSTICS - Adjust
2. Click **Enable Connectivity System**.

**INSTRUMENT DIAGNOSTICS**

Set Interval

Configure

Current Data

Adjust

Set

Build Data

Chassis Menu

Main Menu

**Adjust**

Headlight Position Adjustment

Undefined

Increase

Decrease

Clock Set

13:21:52

Synchronise to PC

Date Set

04/11/2020

Sync to PC

Enable Connectivity System

Disable Connectivity System

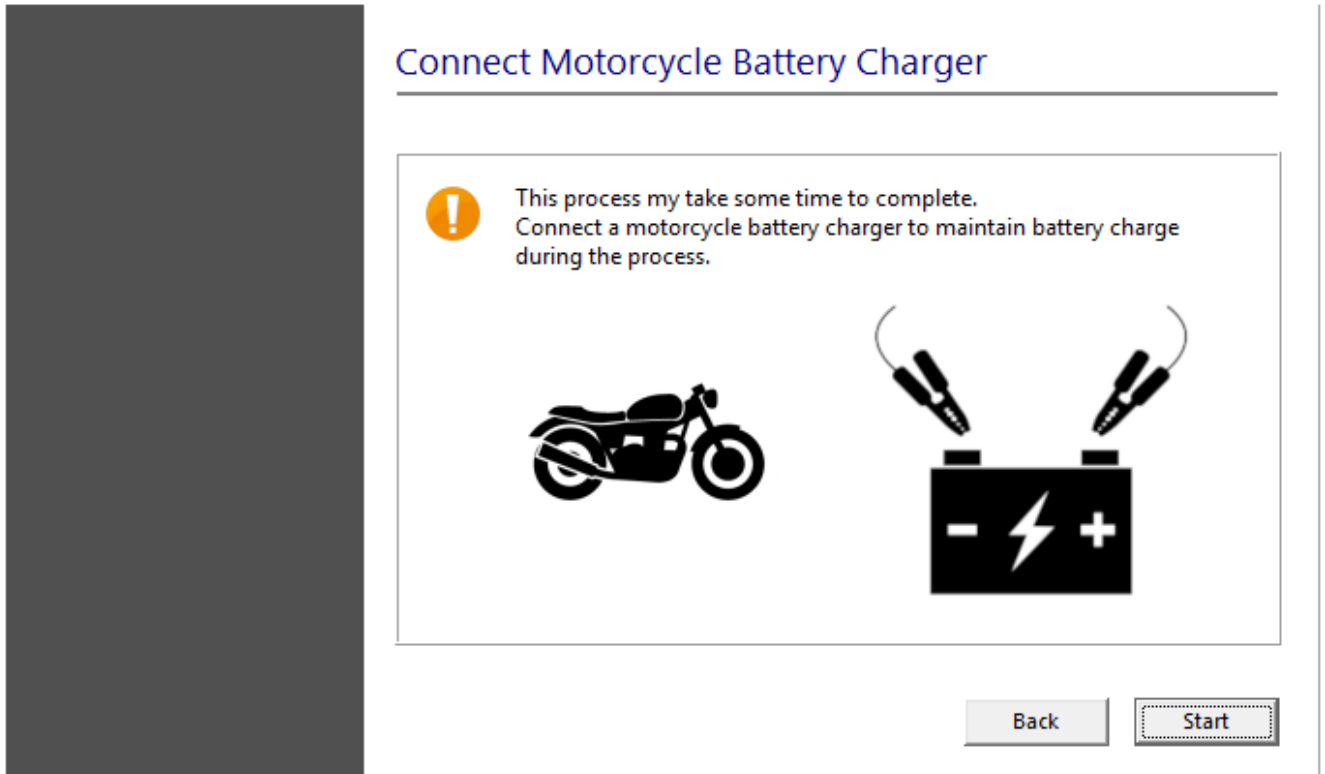
Waiting to adjust settings

Instruments connected

3. Enter the download password and click Next.

**Note:**

- The current password for all downloads can be found at [www.triumphonline.net](http://www.triumphonline.net).
4. The diagnostic tool will prompt you to connect a motorcycle battery charger to maintain power during the process. Click Start to continue



5. The diagnostic tool will start a wizard to automatically complete the necessary calibration updates and enable the connectivity features. The wizard will perform the following:
  - Connectivity Module Check/Update.
  - Instrument Check/Update
  - Instrument VIN Check/Update
  - Enable Connectivity System.

**Connectivity Module Check/Update**

The wizard will check the Connectivity Module for an up to date calibration. The calibration will be automatically updated if necessary.

### Procedure Running

Do not switch OFF the motorcycle ignition during this process.

Connectivity Module Check/Update...	
Instrument Check/Update...	
Instrument VIN Check/Update...	
Enable Connectivity System...	

Performing Connectivity Module Check/Update (Stage 1 of 4)

The wizard will automatically progress to the next stage when the Connectivity Module is up to date.



## Instrument Check/Update

The wizard will check the instruments for an up to date calibration. The calibration will be updated if necessary.


If a calibration update is required, the diagnostic tool will display a selection menu listing the instrument calibrations available for the connected motorcycle.

Select the correct instrument calibration for your region and click Next.

Check the details of the selected calibration are correct before clicking Confirm to start the download.





### Note:

- The instrument update can take up to 45 minutes to complete depending on the update required.



### Procedure Running

Do not switch OFF the motorcycle ignition during this process.

Connectivity Module Check/Update...	
Instrument Check/Update...	
Instrument VIN Check/Update...	
Enable Connectivity System...	

6 %

Download 2 of 3. Gen1b patch application

Performing instrument check/update (stage 2 of 4)

The wizard will automatically progress to the next stage when the instrument calibration is up to date.

---

### Instrument VIN Check/Update

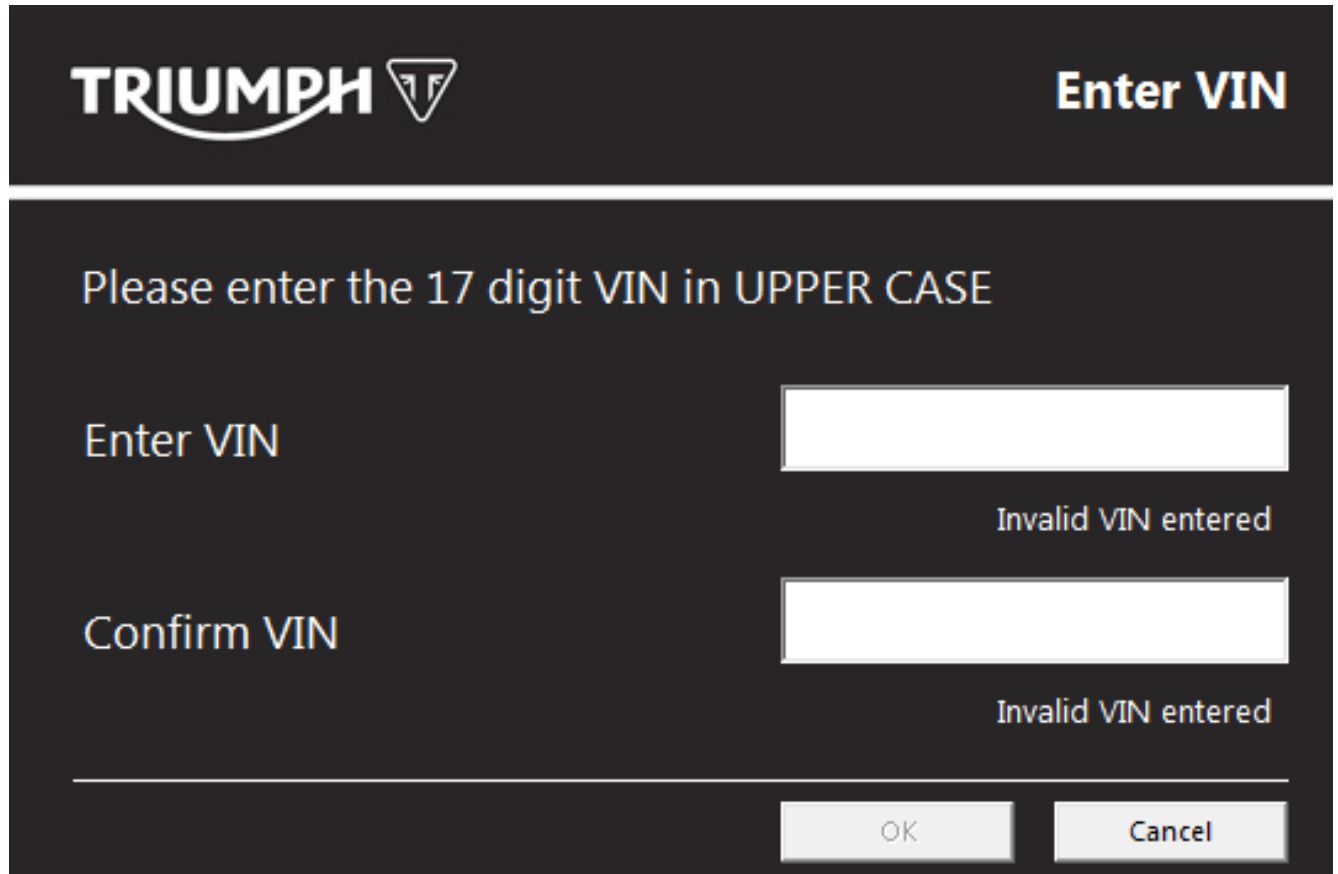
The wizard will check that the instruments have been programmed with the motorcycle VIN.


If no VIN has been programmed, the diagnostic tool will attempt to obtain the VIN details automatically from the Engine ECM before programming them to the instruments.

#### Note:

- The engine stop switch must be in the RUN (ON) position to allow the diagnostic tool to communicate with the engine ECM.

If a VIN cannot be obtained from the engine ECM, a manual VIN entry screen will be displayed.

The image shows a screenshot of a diagnostic tool's 'Enter VIN' screen. At the top, there is a dark header bar with the 'TRIUMPH' logo on the left and the text 'Enter VIN' on the right. Below the header, the main area has a dark background with white text. It says 'Please enter the 17 digit VIN in UPPER CASE'. There are two input fields, each with a label to its left. The first input field is labeled 'Enter VIN' and has the text 'Invalid VIN entered' below it. The second input field is labeled 'Confirm VIN' and also has the text 'Invalid VIN entered' below it. At the bottom of the screen, there are two buttons: 'OK' and 'Cancel'.

**TRIUMPH**  **Enter VIN**

Please enter the 17 digit VIN in UPPER CASE

Enter VIN  Invalid VIN entered

Confirm VIN  Invalid VIN entered

If this screen is displayed, enter the motorcycle's 17 digit VIN. Alphabetical characters must be entered in upper case.

Re-enter the VIN to confirm it is correct before clicking OK.

The wizard will automatically progress to the next stage when the instruments are programmed with the motorcycle VIN.

### Procedure Running

Do not switch OFF the motorcycle ignition during this process.

Connectivity Module Check/Update...	✓
Instrument Check/Update...	✓
Instrument VIN Check/Update...	✓
Enable Connectivity System...	...

Performing instrument VIN check/update (Stage 3 of 4)

#### Enable Connectivity System

When the system updates described above have been completed, the wizard will enable the connectivity system.

### Procedure Running

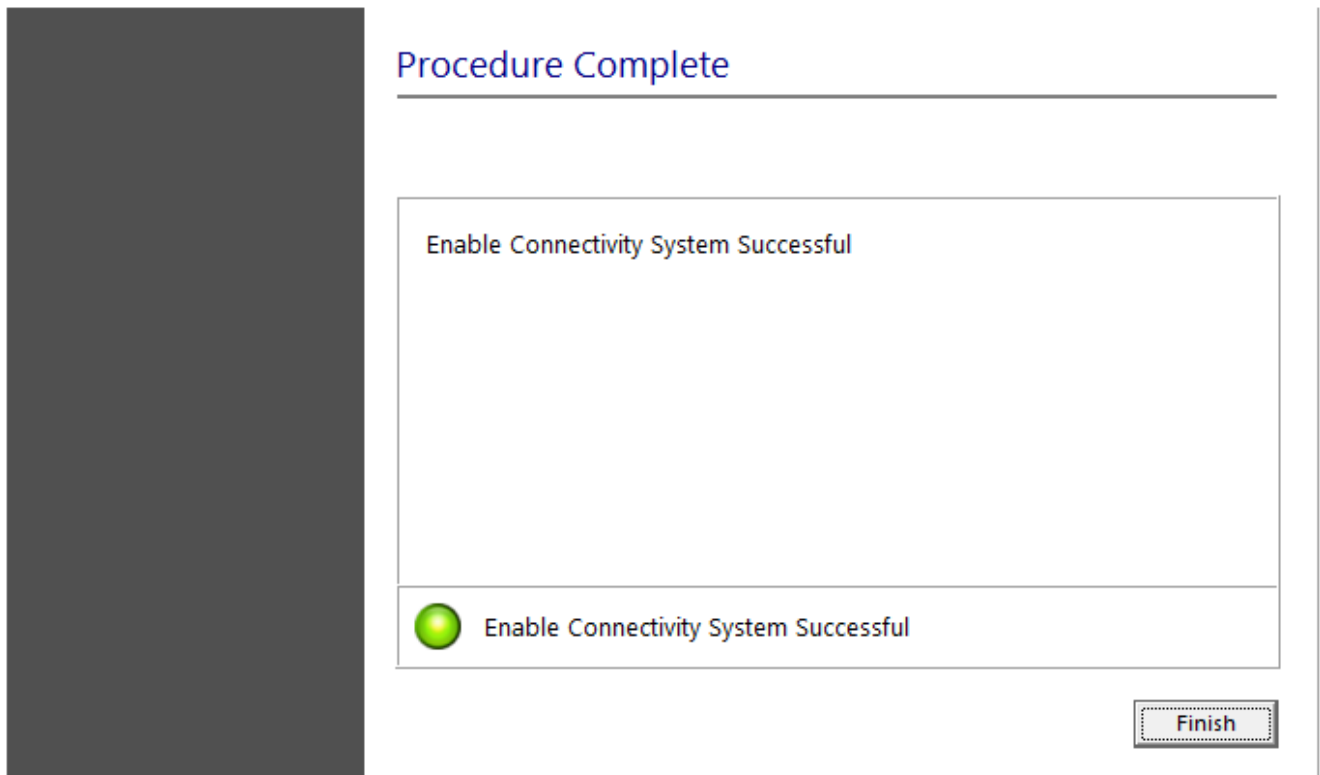
Do not switch OFF the motorcycle ignition during this process.

Connectivity Module Check/Update...	✓
Instrument Check/Update...	✓
Instrument VIN Check/Update...	✓
Enable Connectivity System...	✓

Enabling Connectivity System (Stage 4 of 4)

---

A screen will be displayed to confirm that the connectivity system has been successfully enabled. Click Finish to return to the Instrument Diagnostics area.



**Note:**

- It is normal for DTCs to be stored after this process has completed. This is due to the calibration downloads interrupting CAN communications between the ECUs.
- After this process has completed, you will be prompted to check all ECUs for stored DTCs and erase them as necessary.

## Appendix B - Connectivity Module Handover

This page must be printed and handed to the customer at the time of motorcycle handover.

The My Triumph Connectivity Handbook can be downloaded from:

<https://www.triumphinstructions.com/>

Enter the part number 'A9820200' into the search field to access the handbook.



Part No. **A9820200**

Search



09/03/15

 Welcome to Triumphinstructions.com, your online resource for Triumph Genuine Accessory Instructions. To begin your search, please enter the part number printed on the bar code label of your Triumph Genuine Accessory into the search box and click the search button.

 Bienvenue sur Triumphinstructions.com, votre site en ligne pour les instructions des accessoires Triumph. Pour commencer votre recherche, merci d'entrer la référence que vous trouverez sur l'emballage d'origine de votre accessoire dans le moteur de recherche, et cliquez sur Recherche.

 Willkommen bei Triumphinstructions.com, der Online Information für Anbauanleitungen von Triumph Original Zubehörartikeln. Um Ihre Suche zu starten, geben Sie bitte die Bestellnummer des betreffenden Zubehörartikels ein. Sie finden sie auf dem Bar Code Aufkleber mit "A..." beginnend.

 Benvenuti su Triumphinstructions.com, il sito online dedicato alle istruzioni sugli accessori originali Triumph. Per iniziare la vostra ricerca, inserite nell'apposito spazio il codice prodotto stampato sul codice a barre applicato sulla confezione dell'accessorio e cliccate il bottone di ricerca.

 Welkom bij Triumphinstructions.com, uw online databank voor alle originele Triumph accessoire instructies. Om de instructie op te zoeken, dient u het onderdeelnummer in de zoekbalk in te voeren en op 'search' te klikken. Het nummer vindt u op het barcode label op uw accessoire verpakking.

 Välkommen till Triumphinstructions.com! Din väg att online hitta instruktioner till Triumph:s original tillbehör. För att börja sökningen: knappa in artikelnumret på tillbehöret i sökfältet, och klicka på söknappen.

 ようこそトライアンフインストラクション.comへ こちらでは純正アクセサリーのインストラクションマニュアルをご覧頂けます。インストラクションマニュアルの検索は商品へ貼付されているバーコードに記載の商品番号を検索ボックスへ入力頂きsearchボタンをクリックして下さい。

 Bienvenido a Triumphinstructions.com, tu manual de instrucciones online para accesorios originales Triumph. Para comenzar tu búsqueda, introduce el número de referencia impresa en el código de barras de tu accesorio original Triumph y presiona el botón de búsqueda.

 Bem Vindos ao Triumphinstructions.com, seu recurso ONLINE para instruções dos Acessórios Originais Triumph. Para iniciar sua busca, favor adicionar o número da peça impresso na etiqueta do código de barras de seu Acessório Original Triumph no campo busca e em seguida clique no botão Buscar.

 ยินดีต้อนรับสู่ Triumphinstructions.com ซึ่งเป็นแหล่งข้อมูลออนไลน์สำหรับคำแนะนำในส่วนของคุณโปรดตกแต่งของ Triumph เพื่อเริ่มต้นการค้นหาข้อมูล, กรุณาใส่หมายเลข part number ที่ปรากฏอยู่บนฉลากบาร์โค้ดของคุณโปรดตกแต่งของ Triumph ของคุณลงในช่องค้นหาและหลังจากนั้นให้คลิกที่ปุ่มค้นหาเพื่อทำการค้นหา

 欢迎来到 Triumphinstructions.com, 在线开启对凯旋原装配件指南的探索。您只需在凯旋原装配件的条形码标签上找到配件号, 并将其输入搜索框, 然后点击搜索按钮即可开始。

[Terms & Conditions](#)

[Triumph Worldwide](#)