



Accessory Fitting Instructions

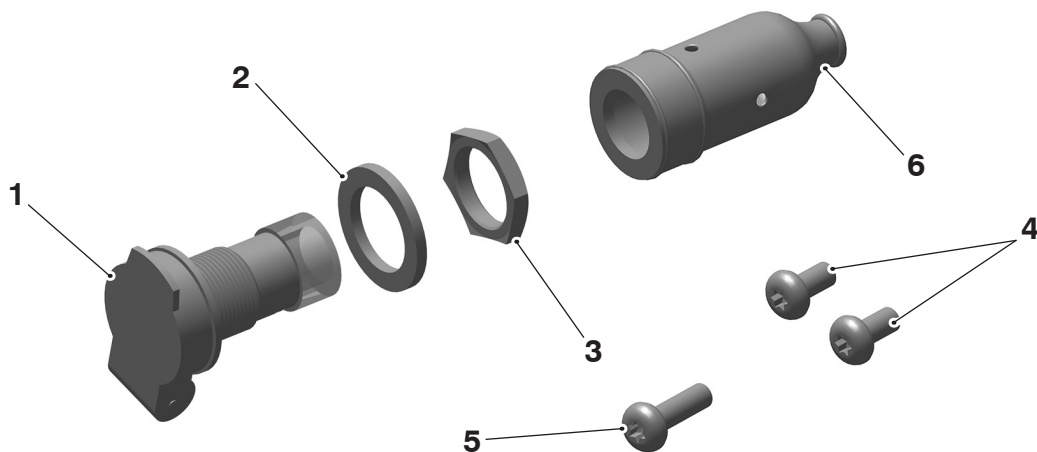
Thank you for choosing this Triumph genuine accessory kit. This accessory kit is the product of Triumph's use of proven engineering, exhaustive testing, and continuous striving for superior reliability, safety and performance.

Completely read all of these instructions before commencing the installation of the accessory kit in order to become thoroughly familiar with the kit's features and the installation process.

These instructions should be considered a permanent part of your accessory kit, and should remain with it even if your accessory equipped motorcycle is subsequently sold.

Auxiliary Power Socket Kit	
Kit Number	Models
A9828050	Street Triple S 660cc from VIN 967907, Street Triple R from VIN 982752 up to VIN BF0949, Street Triple RS from VIN 966534 up to VIN BF0949

Parts supplied



1. Socket, auxiliary power	1 off	4. Fixing, M6 x 12 mm	2 off
2. Plastic washer, M18	1 off	5. Fixing, M6 x 20 mm	1 off
3. Nut, auxiliary power socket	1 off	6. Rubber cover	1 off

⚠ WARNING

Fit only genuine Triumph accessories to those models approved by Triumph as listed in the associated Triumph fitting instructions.

The accessory kits covered in this instruction are designed for use on specific models of Triumph motorcycle. The accessory kits and the models applicable are listed at the start of the instruction. They should never be fitted to any other Triumph model or to any other manufacturer's motorcycle.

Fitting an accessory kit to a Triumph model not listed, or to any other manufacturer's motorcycle, will affect the performance, stability and handling of the motorcycle.

Failure to follow the advice above may lead to loss of motorcycle control which could result in serious injury or death.

⚠ WARNING

Always have Triumph approved parts, accessories and conversions fitted by a competent person with the specialist knowledge and technical understanding of motorcycles, such as an authorised Triumph dealer.

The fitment of parts, accessories and conversions by a person without the specialist knowledge and technical understanding of motorcycles may affect the handling, stability or other aspects of the motorcycle's operation.

Failure to follow the advice above may lead to loss of motorcycle control which could result in serious injury or death.

⚠ WARNING

A torque wrench of known accurate calibration must be used when fitting this accessory kit.

Failure to tighten any of the fasteners to the correct torque specification may affect motorcycle performance, handling and stability.

Failure to follow the advice above may lead to loss of motorcycle control which could result in serious injury or death.

⚠ WARNING

Make sure the motorcycle is stabilised and adequately supported.

Do not support the motorcycle on any ancillary component, the exhaust system or any other non structural parts of the motorcycle frame.

A correctly supported motorcycle will help prevent it from falling.

An unstable motorcycle may fall resulting in motorcycle damage, serious injury or death.

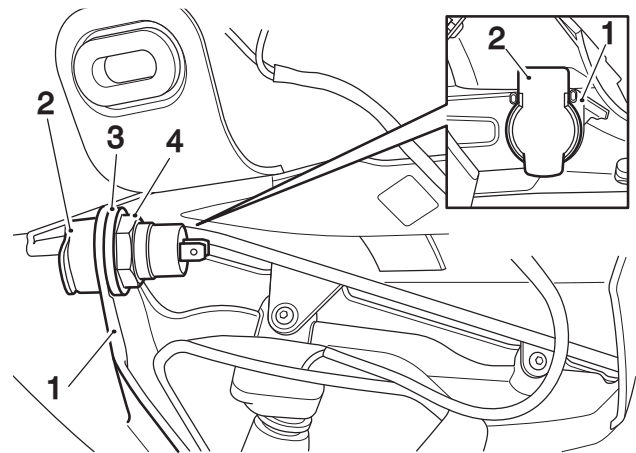
NOTICE

Triumph offers a broad range of approved genuine accessories for your motorcycle.

We cannot therefore cover all possible equipment variations in these instructions. For removal and installation of Triumph Genuine Accessories, always refer to the instructions supplied with the respective accessory kit.

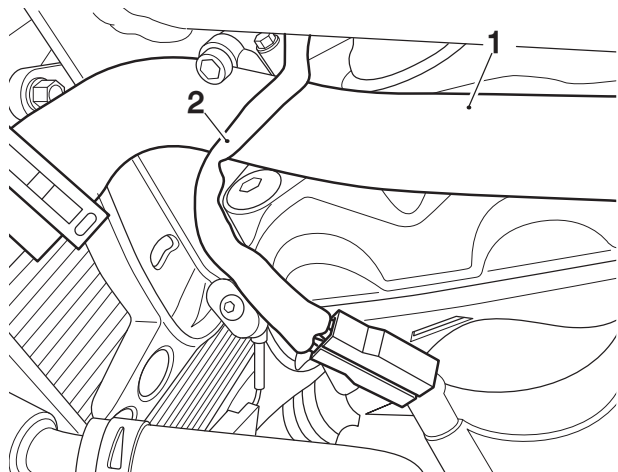
To obtain additional copies of any Triumph accessory instructions, visit www.triumphinstructions.com or contact your authorised Triumph dealer.

1. Remove the seat, as described in the Service Manual.
2. Disconnect the battery as described in the Service Manual.
3. Remove the left hand side radiator cowl and disconnect the left hand indicator connections, as described in the Service Manual. Discard the radiator cowl fixings.
4. Collect the auxiliary power socket from the kit and remove the large nut from the socket. Retain the nut for reuse.
5. Fit the auxiliary power socket into the left hand radiator cowl in the orientation shown. Make sure the drain hole is located at the bottom of the bracket.
6. Fit the plastic washer from the kit and secure with the large auxiliary power socket nut. Tighten the nut to **2 Nm**.



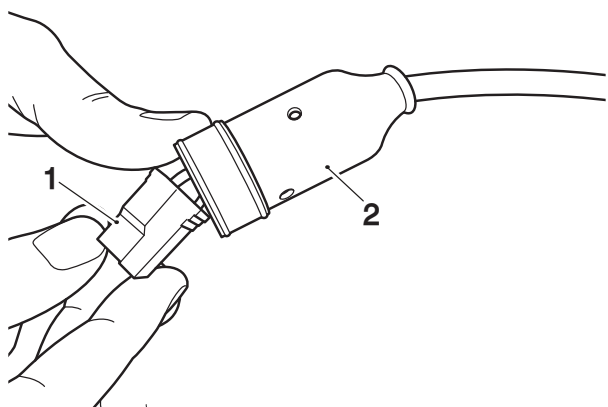
1. Radiator cowl
2. Auxiliary power socket
3. Plastic washer, M18
4. Auxiliary power socket nut

7. Locate the auxiliary power socket wiring harness connector which is located under the fuel tank on the left hand side of the motorcycle. Pull the auxiliary power socket harness and connector out from below the fuel tank. Route the auxiliary power socket connector above the radiator hose, as shown.



1. Radiator hose
2. Auxiliary power socket harness

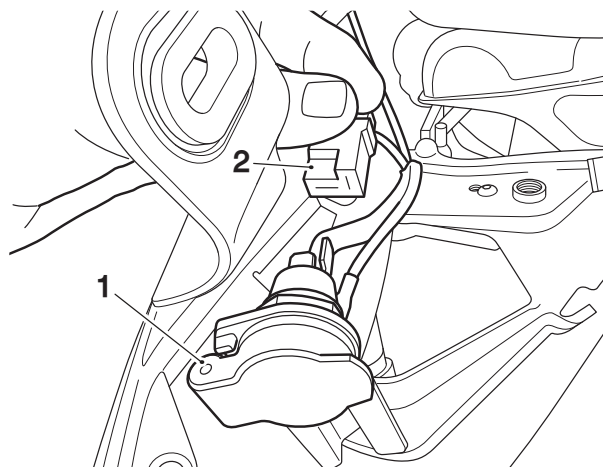
8. Remove the protective film from the auxiliary power socket wiring connector and feed the auxiliary power socket wiring connector through the rubber cover from the kit, as shown.



1. Auxiliary power socket connector
2. Rubber cover

9. Reconnect the left hand indicator as described in the Service Manual.

10. Connect the auxiliary power socket wiring harness connector to the auxiliary power socket.



1. Auxiliary power socket
2. Auxiliary power socket wiring harness connector

11. Slide the rubber cover over the rear of the auxiliary power socket.
12. Make sure the auxiliary power socket wiring harness is positioned such that it will not chafe any adjacent pipes or hoses.
13. Refit the left hand side radiator cowl as described in the Service Manual using the new encapsulated fixings provided in the kit.
14. Reconnect the battery as described in the Service Manual.
15. Refit the seat as described in the Service Manual.

Auxiliary Power Socket

Secondary fuse box, fuse number 1 (10 Amps) labelled ACC protects the auxiliary power socket. The recommended maximum current that should be drawn through the auxiliary socket is 10 Amps @ 12 Volts.

⚠ WARNING

After fitting the accessory kit the motorcycle will exhibit new handling characteristics.

Operate the motorcycle in a safe area free from traffic to gain familiarity with any new characteristics.

Operation of the motorcycle when not familiar with any new handling characteristics may lead to loss of motorcycle control which could result in serious injury or death.

⚠ WARNING

If, after fitting this accessory kit, you have any doubt about the performance of any aspect of the motorcycle, contact a competent person with the specialist knowledge and technical understanding of motorcycles, such as an authorised Triumph dealer.

Riding a motorcycle when there is any doubt as to any aspect of the performance of the motorcycle may lead to loss of motorcycle control which could result in serious injury or death.

⚠ WARNING

Never ride an accessory-equipped motorcycle at speeds above 80 mph (130 km/h).

Remember that the 80 mph (130 km/h) limit will be reduced by the fitting of non-approved accessories, incorrect loading, worn tyres, overall motorcycle condition and poor road or weather conditions.

The presence of accessories will cause changes in the stability and handling of the motorcycle. Failure to allow for changes in motorcycle stability may lead to loss of motorcycle control which could result in serious injury or death.

⚠ WARNING

High-speed operation should only be attempted by riders who have been instructed in the techniques necessary for high-speed riding and are familiar with the motorcycle's characteristics in all conditions.

Only operate this Triumph motorcycle at high speed in closed-course, on-road competition or on closed-course racetracks.

High-speed operation in any other circumstances is dangerous and may lead to loss of motorcycle control which could result in serious injury or death.

NOTICE

The motorcycle must not be operated above the legal road speed limit except in closed-course conditions.