

Accessory Fitting Instructions

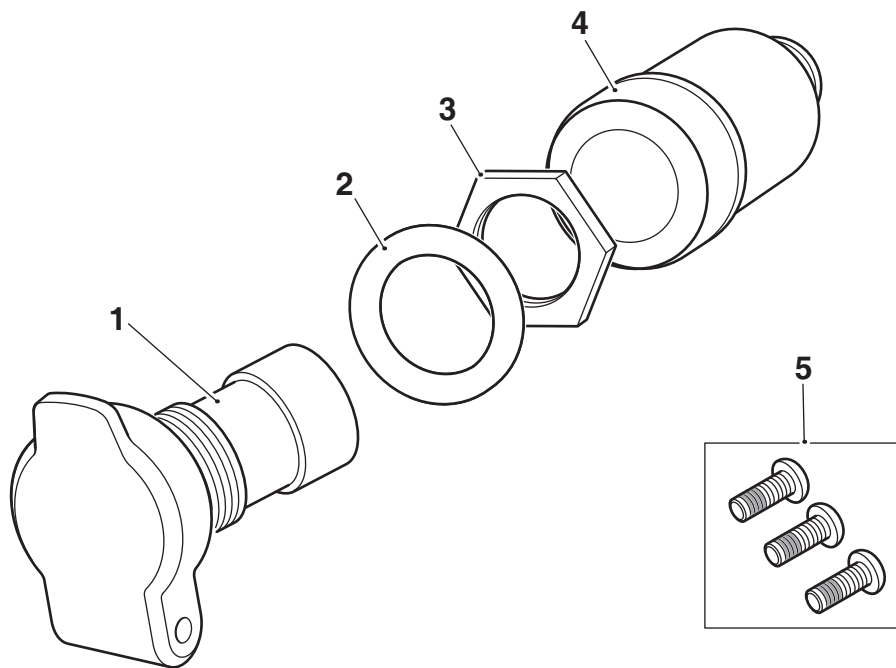
Auxiliary Power Socket Kit	
Kit Number	Models Affected
A9828041	Scrambler 1200 XC, Scrambler 1200 XE to VIN BN8495

Thank you for choosing this Triumph genuine accessory kit. This accessory kit is the product of Triumph's use of proven engineering, exhaustive testing, and continuous striving for superior reliability, safety and performance.

Completely read all of these instructions before commencing the installation of the accessory kit in order to become thoroughly familiar with the kit's features and the installation process.

These instructions should be considered a permanent part of your accessory kit, and should remain with it even if your accessory equipped motorcycle is subsequently sold.

Parts Supplied



1. Socket, auxiliary power	1 off	4. Rubber cover	1 off
2. Plastic washer, M18	1 off	5. Fixing, M5 x 16 mm	3 off
3. Nut	1 off		

Warning

The accessory kits covered in this instruction are designed for use on specific models of Triumph motorcycle. The accessory kits and the models applicable are listed at the start of the instruction. They should not be fitted to any other Triumph model or to any other manufacturer's motorcycle. Fitting an accessory kit to a Triumph model not listed, or to any other manufacturer's motorcycle will affect the performance, stability and handling of the motorcycle. This may affect the rider's ability to control the motorcycle and may result in loss of motorcycle control and an accident.

Warning

Always have Triumph approved parts, accessories and conversions fitted by a trained technician of an authorised Triumph dealer. The fitment of parts, accessories and conversions by a technician who is not of an authorised Triumph dealer may affect the handling, stability or other aspects of the motorcycle's operation which may result in loss of motorcycle control and an accident.

Warning

Throughout this operation, ensure that the motorcycle is stabilised and adequately supported to prevent risk of injury from the motorcycle falling.

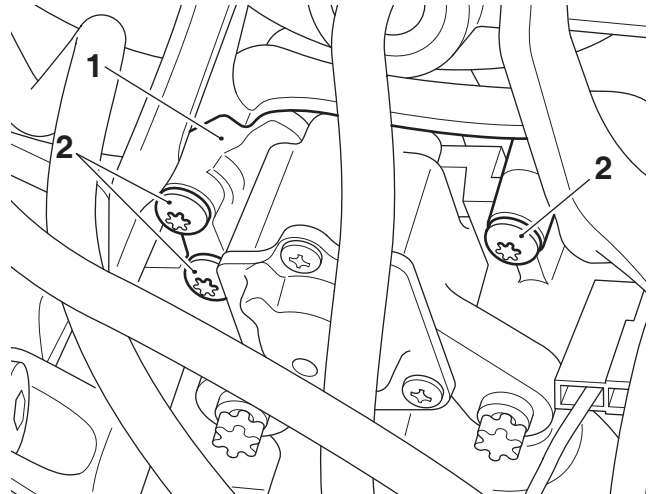
Warning

A torque wrench of known accurate calibration must be used when fitting this accessory kit. Failure to tighten any of the fasteners to the correct torque specification may affect motorcycle performance, handling and stability. This may result in loss of motorcycle control and an accident.

Note:

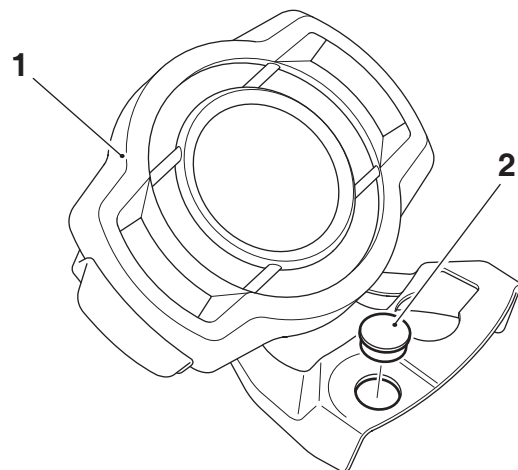
- **Triumph offers a broad range of approved genuine accessories for your motorcycle. We cannot therefore cover all possible equipment variations in these instructions. For removal and installation of Triumph Genuine Accessories, always refer to the instructions supplied with the respective accessory kit. To obtain additional copies of any Triumph accessory instructions, visit www.triumphinstructions.com or contact your authorised Triumph dealer.**

1. Remove the seat, as described in the Service Manual.
2. Disconnect the battery, as described in the Service Manual.
3. Remove the headlight, as described in the Service Manual.
4. Remove the headlight bowl, as described in the Service Manual.
5. Remove the three fixings securing the instrument panel mounting bracket and move the instrument panel and mounting bracket clear from upper yoke. Discard the fixings.



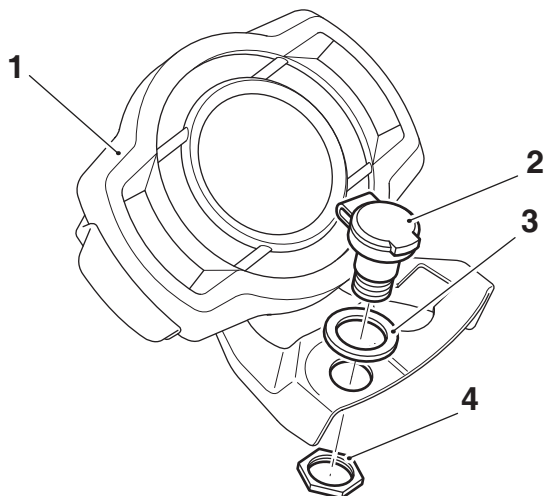
1. Instrument panel mounting bracket
2. Fixings

6. Remove the blanking plug from the instrument panel mounting bracket. Retain the blanking plug for reuse if the motorcycle is to be returned to its original condition.



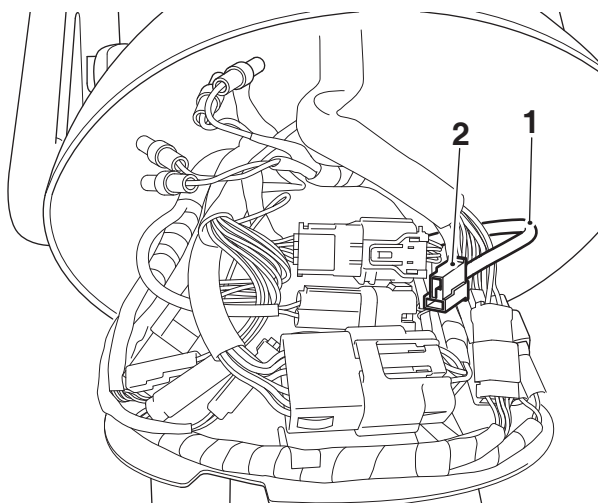
1. Instrument panel mounting bracket
2. Blanking plug

- Fit the auxiliary power socket into the instrument panel mounting bracket in the orientation shown. Fit the plastic washer and secure with the large auxiliary power socket nut as shown. Tighten the nut to **2 Nm**.



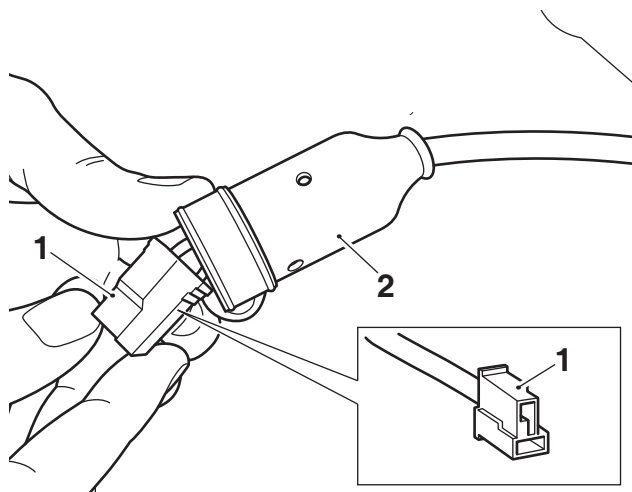
- Instrument panel mounting bracket
- Auxiliary power socket
- Plastic washer, M18
- Auxiliary power socket nut

- Locate the auxiliary power socket harness connector in the headlight bowl and remove the harness and connector from the headlight bowl.



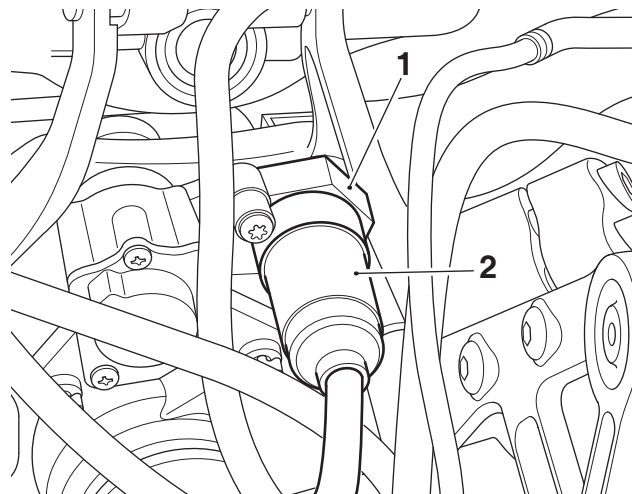
- Auxiliary power socket harness
- Auxiliary power socket connector

- Feed the auxiliary power socket connector on the harness through the rubber cover from the kit, as shown.



- Auxiliary power socket connector
- Rubber cover

- Connect the sub-harness auxiliary power socket connector to the auxiliary power socket. Slide the rubber cover over the rear of the auxiliary power socket, as shown below.



- Auxiliary power socket
- Rubber cover

Caution

A wiring harness which becomes trapped or kinked during installation, or general motorcycle operation, may result in wiring harness damage and electrical malfunctions.

- Refit the instrument panel and mounting bracket ensuring the auxiliary power socket harness does not become trapped or kinked at any point, and secure with the M5 x 16 mm fixings from the kit. Tighten the fixings to **5 Nm**.

12. Refit the headlight bowl as described in the Service Manual.
13. Refit and align the headlight as described in the Service Manual.
14. Reconnect the battery, as described in the Service Manual.
15. Refit the seat, as described in the Service Manual.

Power Supply

Note:

- **The auxiliary power socket provides a continuous 12 Volt power supply regardless of the ignition being switched on or off. Use of the auxiliary socket with the ignition switched off will drain the motorcycle battery.**

The auxiliary power socket will provide a 12 Volt electrical supply.

Items with a current draw greater than 5 Amps (60 Watts) must not be plugged into the auxiliary power socket.

The auxiliary socket is protected by a 10 Amp fuse. Refer to the Service Manual for the fuse location.

Warning

When connecting any electrical device to the auxiliary power socket ensure the wiring of the device is routed correctly and cannot contact any hot surfaces of the motorcycle or interfere with any of the motorcycle controls. Contact with a hot surface may result in wiring harness damage and electrical malfunctions. Any interference with the motorcycle controls may result in loss of motorcycle control and an accident.

Warning

If, after fitting this accessory kit, you have any doubt about the performance of any aspect of the motorcycle, contact an authorised Triumph dealer and do not ride the motorcycle until the authorised dealer has declared it fit for use. Riding a motorcycle when there is any doubt as to any aspect of the performance of the motorcycle may result in loss of motorcycle control and an accident.

Warning

Never ride an accessory-equipped motorcycle at speeds above 80 mph (130 km/h).

The presence of accessories will cause changes in the stability and handling of the motorcycle. Failure to allow for changes in motorcycle stability may result in loss of motorcycle control and an accident.

Remember that the 80 mph (130 km/h) limit will be reduced by the fitting of non-approved accessories, incorrect loading, worn tyres, overall motorcycle condition and poor road or weather conditions.

Warning

The motorcycle must not be operated above the legal road speed limit except in closed-course conditions.

Warning

Only operate this Triumph motorcycle at high speed in closed-course, on-road competition or on closed-course racetracks. High-speed operation should only be attempted by riders who have been instructed in the techniques necessary for high speed riding and are familiar with the motorcycle's characteristics in all conditions.

High-speed operation in any other circumstances is dangerous and may result in loss of motorcycle control and an accident.