



Accessory Fitting Instructions

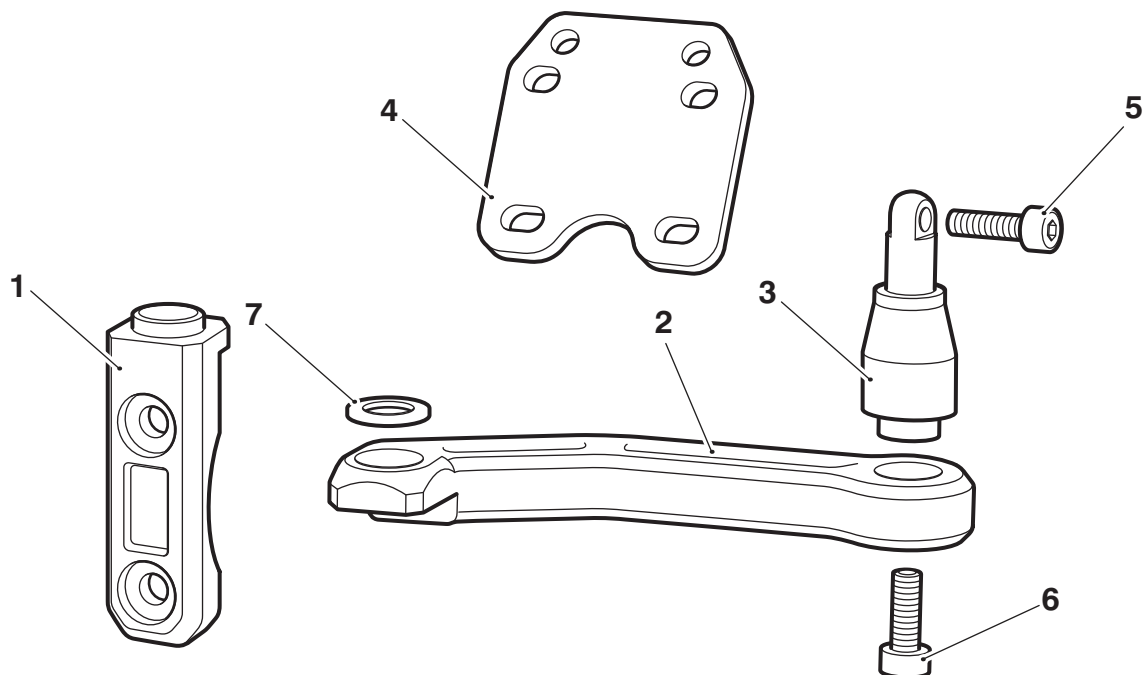
GPS Mounting Kit	
Kit number	Models Affected
A9820021	Tiger 800, Tiger 800XC
A9828038	Tiger Sport up to VIN AD1190
	Speed Triple 1050 from VIN 461332 and Speed Triple R 1050

Thank you for choosing this Triumph genuine accessory kit. This accessory kit is the product of Triumph's use of proven engineering, exhaustive testing, and continuous striving for superior reliability, safety and performance.

Completely read all of these instructions before commencing the installation of the accessory kit in order to become thoroughly familiar with the kit's features and the installation process.

These instructions should be considered a permanent part of your accessory kit, and should remain with it even if your accessory equipped motorcycle is subsequently sold.

Parts supplied



1. Clutch lever clamp	1 off	5. Screw, M5 x 20 mm	1 off
2. Arm	1 off	6. Screw, M6 x 16 mm	1 off
3. Stem	1 off	7. Washer, M10	1 off
4. Mount plate	1 off		

Note:

- The GPS Mounting Kit must not be fitted to a motorcycle when Mobile Phone Holder Kit A9510289, A9510290, A9510291 are fitted.



Warning

Fit only genuine Triumph accessories to those models approved by Triumph as listed in the associated Triumph fitting instructions. The accessory kits covered in this instruction are designed for use on specific models of Triumph motorcycle. The accessory kits and the models applicable are listed at the start of the instruction. They should never be fitted to any other Triumph model or to any other manufacturer's motorcycle. Fitting an accessory kit to a Triumph model not listed, or to any other manufacturer's motorcycle will affect the performance, stability and handling of the motorcycle. This may affect the rider's ability to control the motorcycle and could result in an accident causing severe injuries or death.



Warning

Always have Triumph approved parts, accessories and conversions fitted by a trained technician of an authorised Triumph dealer. The fitment of parts, accessories and conversions by a technician who is not of an authorised Triumph dealer may affect the handling, stability or other aspects of the motorcycle's operation which may result in loss of motorcycle control and an accident.



Warning

Make sure the motorcycle is supported. A correctly supported motorcycle will help prevent it from falling. An unstable motorcycle may fall, causing injury to the operator or damage to the motorcycle.



Warning

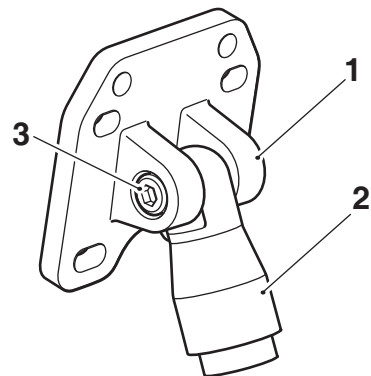
A torque wrench of known accurate calibration must be used when fitting this accessory kit. Failure to tighten any of the fasteners to the correct torque specification may affect motorcycle performance, handling and stability. This may result in loss of motorcycle control and an accident.

Note:

- Triumph offers a broad range of approved genuine accessories for your motorcycle. We cannot therefore cover all possible equipment variations in these instructions. For removal and installation of Triumph Genuine Accessories, always refer to the instructions supplied with the respective accessory kit. To obtain additional copies of any Triumph accessory instructions, visit www.triumphinstructions.com or contact your authorised Triumph dealer.

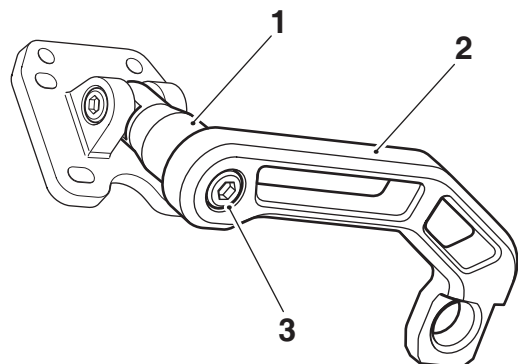
GPS Mounting Arm Assembly

- Assemble the mount plate to the stem using the M5 x 20 mm screw. Do not fully tighten at this stage.



- Mount plate
- Stem
- M5 x 20 mm screw

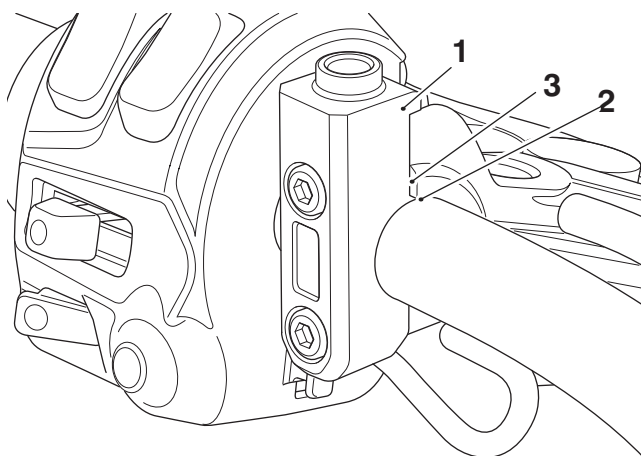
- Assemble the stem and mount plate assembly to the arm using the M6 x 16 mm screw. Do not fully tighten at this stage.



- Stem and mount plate assembly
- Arm
- M6 x 16 mm screw

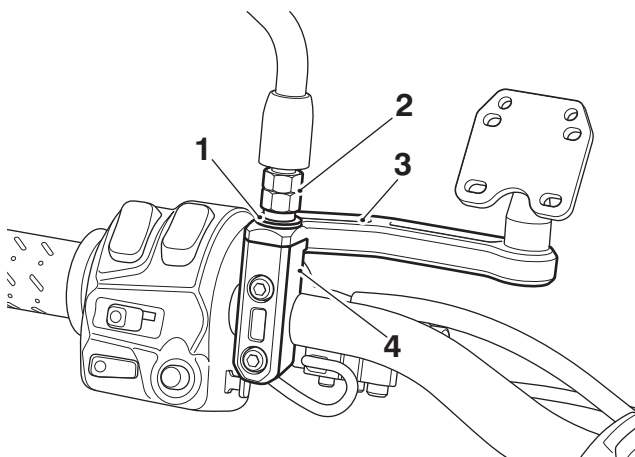
GPS Mounting Arm Installation

1. Remove the left hand mirror assembly. Retain for reuse.
2. Whilst supporting the clutch lever, remove the two bolts and the original clutch lever clamp. Retain the bolts for reuse. Retain the clamp for reuse if the motorcycle is to be returned to its original condition.
3. Install the accessory clutch lever clamp from the kit, with the mirror mounting facing upwards and secure with the bolts removed previously.
4. Align the split line of the clutch lever with the alignment mark on the upper surface of the handlebar, then tighten the clamp bolts, upper first, to **12 Nm**.



1. Clutch lever clamp
2. Etched cross mark
3. Split line

5. Attach the GPS mounting arm assembly to the accessory clutch lever clamp as shown and secure using the M10 washer from the kit and the original mirror. Tighten the mirror to **25 Nm** and re-adjust as necessary.



1. Washer
2. Mirror
3. GPS mounting arm assembly
4. Clutch lever clamp



Danger

Do not use a mobile phone while you ride.

Do not text while you ride.

Do not attempt to adjust any GPS device while you ride.

Telephone calls, texting or any attempt to use your mobile device for any purpose will distract you, this will cause accidents that can seriously injure or kill riders, passengers, occupants in other vehicles and pedestrians.

6. Install the GPS unit (not supplied) to the mount following the GPS unit manufacturer's instructions.
7. Adjust the GPS unit as required and tighten the mounting arm M5 fixing to **4 Nm** and the M6 fixing to **6 Nm**.



Warning

Move the handlebars to left and right full lock while checking that the GPS mounting or GPS unit do not restrict full lock operation. Check cables or harnesses do not bind or restrict full lock operation. Any component, cables or harnesses that will restrict the steering may result in loss of motorcycle control and an accident.



Caution

Move the handlebar to the left and right full lock while checking that the GPS mounting or GPS unit do not contact the fuel tank, screen, tank bag (if fitted) or any other part of the motorcycle. This will result in damage to the fuel tank, screen or other parts of the motorcycle. Adjust the GPS mounting as required to make sure the GPS mounting or GPS unit do not contact any part of the motorcycle.



Warning

After fitting the accessory kit the motorcycle will exhibit new handling characteristics. Operate the motorcycle in a safe area free from traffic to gain familiarity with any new characteristics. Operation of the motorcycle when not familiar with any new handling characteristics may result in loss of motorcycle control and an accident.



Warning

If, after fitting this accessory kit, you have any doubt about the performance of any aspect of the motorcycle, contact an authorised Triumph dealer and do not ride the motorcycle until the authorised dealer has declared it fit for use. Riding a motorcycle when there is any doubt as to any aspect of the performance of the motorcycle may result in loss of motorcycle control and an accident.



Warning

When mounting a GPS unit to the mounting kit, make sure the view to the instruments is not impaired.

If the view to the instruments is impaired, the rider may not be in full control which may result in loss of motorcycle control and an accident.



Warning

The accessory GPS mounting kit should not be fitted with a GPS unit, including its holder, weighing more than 0.370 kg (11.9 oz.).

If a GPS assembly weighing more than 0.370 kg (11.9 oz.) is fitted, it may affect the stability of the motorcycle, which may result in loss of motorcycle control and an accident.



Warning

Never ride an accessory-equipped motorcycle at speeds above 80 mph (130 km/h).

The presence of accessories will cause changes in the stability and handling of the motorcycle. Failure to allow for changes in motorcycle stability may result in loss of motorcycle control and an accident.

Remember that the 80 mph (130 km/h) limit will be reduced by the fitting of non-approved accessories, incorrect loading, worn tyres, overall motorcycle condition and poor road or weather conditions.



Warning

The motorcycle must not be operated above the legal road speed limit except in closed-course conditions.



Warning

Only operate this Triumph motorcycle at high speed in closed-course, on-road competition or on closed-course racetracks. High-speed operation should only be attempted by riders who have been instructed in the techniques necessary for high speed riding and are familiar with the motorcycle's characteristics in all conditions.

High-speed operation in any other circumstances is dangerous and may result in loss of motorcycle control and an accident.