



Accessory Fitting Instructions

GPS Mounting Kit	
Kit Number	Models Affected
A9828035	Tiger XR, Tiger XR _x , Tiger XC, Tiger XC _x Tiger 800 XR, Tiger 800 XR _x , Tiger 800 XR _x LRH, Tiger 800 XC _x , Tiger 800 XR _T , Tiger 800 XC _A Tiger 1200 XR, Tiger 1200 XR _x , Tiger 1200 XR _x LRH, Tiger 1200 XC _x , Tiger 1200 XR _T , Tiger 1200 XC _A

Note:

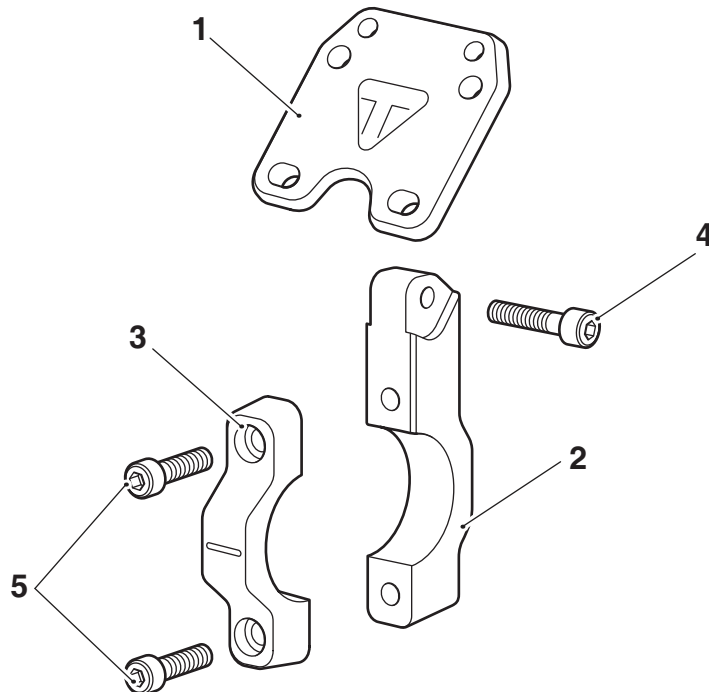
- **The GPS Mounting Kit must not be fitted to a motorcycle when a Tank Bag has been fitted.**

Thank you for choosing this Triumph genuine accessory kit. This accessory kit is the product of Triumph's use of proven engineering, exhaustive testing, and continuous striving for superior reliability, safety and performance.

Completely read all of these instructions before commencing the installation of the accessory kit in order to become thoroughly familiar with the kit's features and the installation process.

These instructions should be considered a permanent part of your accessory kit, and should remain with it even if your accessory equipped motorcycle is subsequently sold.

Parts Supplied



1. Mounting plate	1 off	4. Screw, M5 x 20 mm	1 off
2. Clamp, front	1 off	5. Screw, M5 x 16 mm	2 off
3. Clamp, rear	1 off		

Warning

The accessory kits covered in this instruction are designed for use on specific models of Triumph motorcycle. The accessory kits and the models applicable are listed at the start of the instruction. They should not be fitted to any other Triumph model or to any other manufacturer's motorcycle. Fitting an accessory kit to a Triumph model not listed, or to any other manufacturer's motorcycle will affect the performance, stability and handling of the motorcycle. This may result in loss of motorcycle control and an accident.

Warning

Always have Triumph approved parts, accessories and conversions fitted by a trained technician of an authorised Triumph dealer. The fitment of parts, accessories and conversions by a technician who is not of an authorised Triumph dealer may affect the handling, stability or other aspects of the motorcycle's operation which may result in loss of motorcycle control and an accident.

Warning

Throughout this operation, ensure that the motorcycle is stabilised and adequately supported to prevent risk of injury from the motorcycle falling.

Warning

A torque wrench of known accurate calibration must be used when fitting this accessory kit. Failure to tighten any of the fasteners to the correct torque specification may affect motorcycle performance, handling and stability. This may result in loss of motorcycle control and an accident.

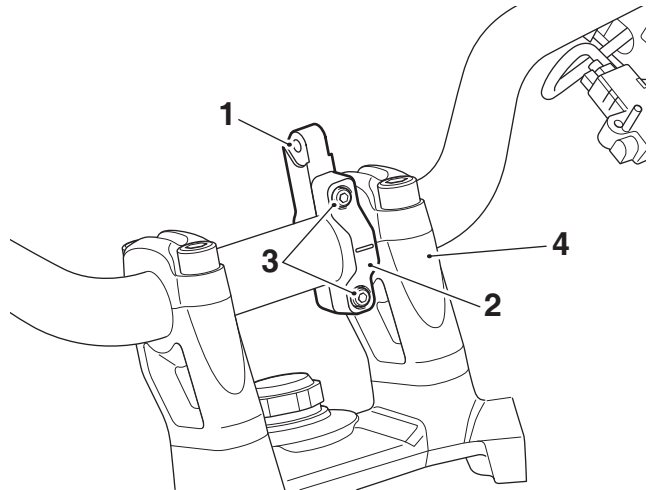
Note:

- Triumph offers a broad range of approved genuine accessories for your motorcycle. We cannot therefore cover all possible equipment variations in these instructions. For removal and installation of Triumph Genuine Accessories, always refer to the instructions supplied with the respective accessory kit. To obtain additional copies of any Triumph accessory instructions, visit www.triumphinstructions.com or contact your authorised Triumph dealer.

Installation

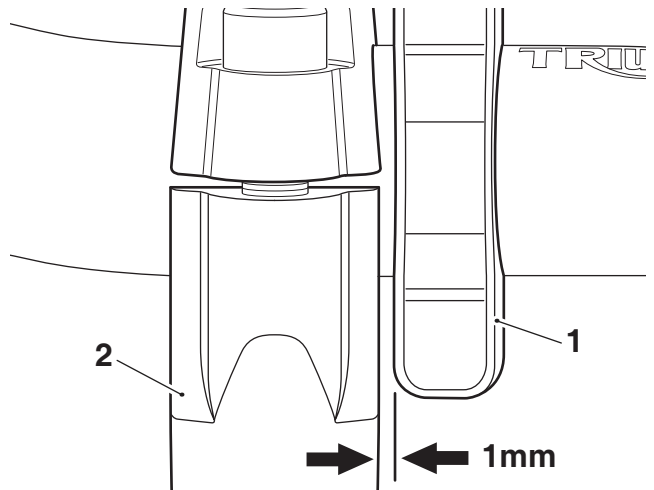
Tiger and Tiger 800 Models Only

- Fit the front and rear clamps to the handlebars next to the left hand riser, as shown. Fit the two M5 x 16 mm screws, do not fully tighten at this stage.



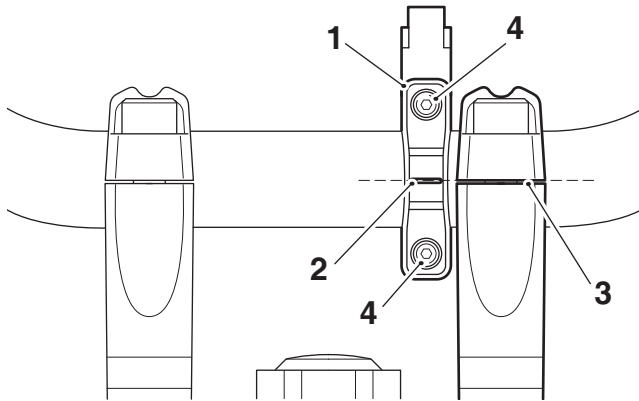
- Clamp, front
- Clamp, rear
- Screw, M5 x 16 mm
- Riser, left hand

- Using a suitable shim, if necessary, position the clamp assembly 1 mm from the left hand riser.



- Clamp assembly
- Riser, left hand

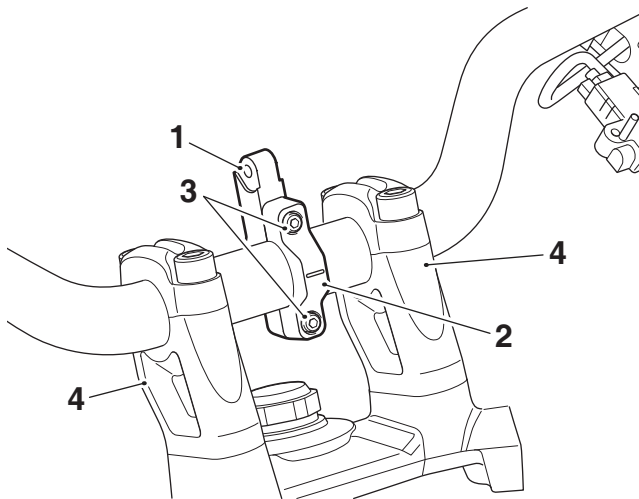
- Align the slot in the rear clamp with the handlebar riser split line, as shown. Ensure the 1 mm clearance between the clamp assembly and riser is maintained. Tighten the top M5 fixing first, to **5 Nm**, then tighten the bottom fixing to **5 Nm**.



- Clamp, rear
- Slot
- Split line
- Fixing, M5

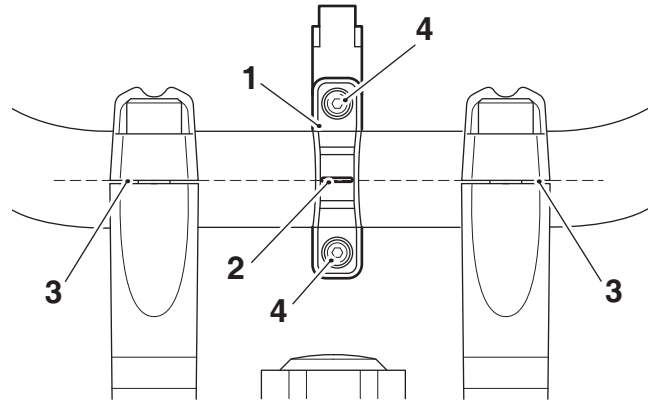
Tiger 1200 Models Only

- Fit the front and rear clamps to the centre of the handlebars between the risers, as shown. Fit the two M5 x 16 mm screws, do not fully tighten at this stage.



- Clamp, front
- Clamp, rear
- Screw, M5 x 16 mm
- Risers

- Align the slot in the rear clamp with the split lines of the handlebar risers, as shown. Tighten the top M5 fixing first, to **5 Nm**, then tighten the bottom fixing to **5 Nm**.

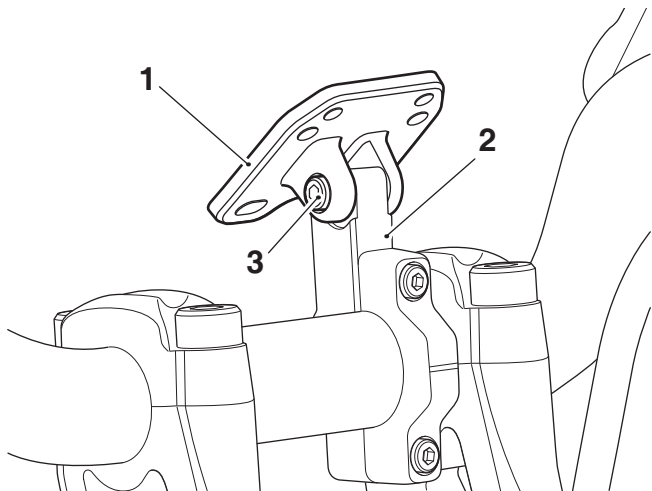


- Clamp, rear
- Slot
- Split line
- Fixing, M5

GPS Mounting Plate

All Models

- Assemble the mount plate to the clamp using the M5 x 20 mm screw. Do not fully tighten at this stage.



- Mount plate (Tiger and Tiger 800 shown)
- Clamp
- M5 x 20 mm screw



Danger

Do not use a mobile phone while you ride. Do not text while you ride. Do not attempt to adjust any GPS device while you ride. Telephone calls, texting or any attempt to use your mobile device for any purpose will distract you, this will cause accidents that can seriously injury or kill riders, passengers, occupants in other vehicles and pedestrians.

7. Install the GPS unit (not supplied) to the mount following the GPS unit manufacturer's instructions.
8. Adjust the GPS unit as required and tighten the M5 fixing to **5 Nm**.



Warning

Move the handlebars to left and right full lock while checking that the GPS mounting or GPS unit do not restrict full lock operation. Check cables or harnesses do not bind or restrict full lock operation. Any component, cables or harnesses that will restrict the steering may cause loss of control of the motorcycle and an accident.



Caution

Move the handlebars to left and right full lock while checking that the GPS mounting or GPS unit do not contact the fuel tank, screen, or any other part of the motorcycle. This will result in damage to the fuel tank, screen or other parts of the motorcycle. Adjust the GPS mounting as required to ensure the GPS mounting or GPS unit do not contact any part of the motorcycle.



Warning

After fitting the accessory kit the motorcycle will exhibit new handling characteristics. Operate the motorcycle in a safe area free from traffic to gain familiarity with any new characteristics. Operation of the motorcycle when not familiar with any new handling characteristics may result in loss of motorcycle control and an accident.



Warning

When mounting a GPS unit to the mounting kit, ensure the view to the instruments is not impaired.

If the view to the instruments is impaired, the rider may not be in full control of the motorcycle which could lead to an accident.



Warning

If, after fitting this accessory kit, you have any doubt about the performance of any aspect of the motorcycle, contact an authorised Triumph dealer and do not ride the motorcycle until the authorised dealer has declared it fit for use. Riding a motorcycle when there is any doubt as to any aspect of the performance of the motorcycle may result in loss of control of the motorcycle leading to an accident.



Warning

The accessory GPS mounting kit should not be fitted with a GPS unit, including its holder, weighing more than 0.370 kg (11.9 oz.).

If a GPS assembly weighing more than 0.370 kg (11.9 oz.) is fitted, it may affect the stability of the motorcycle, leading to loss of motorcycle control and an accident.



Warning

Never ride an accessory-equipped motorcycle at speeds above 80 mph (130 km/h).

The presence of accessories will cause changes in the stability and handling of the motorcycle. Failure to allow for changes in motorcycle stability may lead to loss of control or an accident.

Remember that the 80 mph (130 km/h) limit will be reduced by the fitting of non-approved accessories, incorrect loading, worn tyres, overall motorcycle condition and poor road or weather conditions.



Warning

The motorcycle must not be operated above the legal road speed limit except in closed-course conditions.



Warning

Only operate this Triumph motorcycle at high speed in closed-course, on-road competition or on closed-course racetracks. High-speed operation should only be attempted by riders who have been instructed in the techniques necessary for high-speed riding and are familiar with the motorcycle's characteristics in all conditions.

High-speed operation in any other circumstances is dangerous and will lead to loss of motorcycle control and an accident.