



## Accessory Fitting Instructions

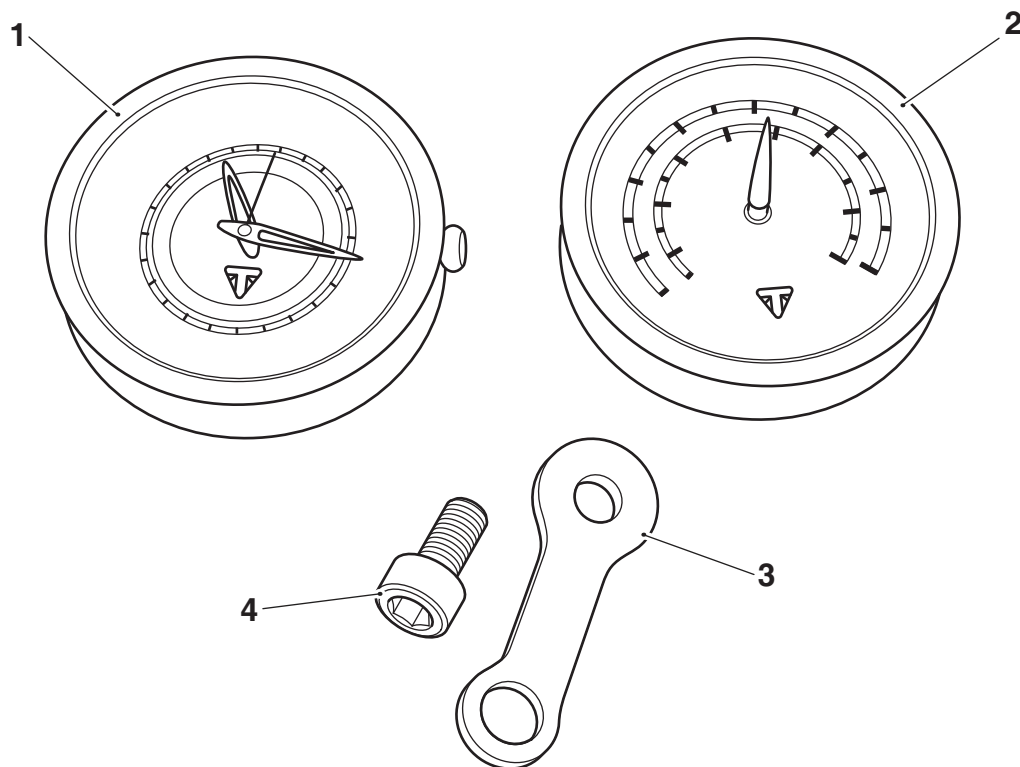
Clock, Auxiliary Instrument Kit	
Kit number	Models Affected
A9828028	Bonneville Bobber, Bonneville Bobber Black, Bonneville Bobber TFC, Bonneville Speedmaster from VIN 739143
Temperature Gauge, Auxiliary Instrument Kit	
Kit number	Models Affected
A9828029	Bonneville Bobber, Bonneville Bobber Black, Bonneville Bobber TFC, Bonneville Speedmaster from VIN 739143

Thank you for choosing this Triumph genuine accessory kit. This accessory kit is the product of Triumph's use of proven engineering, exhaustive testing, and continuous striving for superior reliability, safety and performance.

Completely read all of these instructions before commencing the installation of the accessory kit in order to become thoroughly familiar with the kit's features and the installation process.

These instructions should be considered a permanent part of your accessory kit, and should remain with it even if your accessory equipped motorcycle is subsequently sold.

**Parts supplied: A9828028, A9828029**



1. Clock (A9828028 only)	1 off	3. Mounting bracket	1 off
2. Temperature gauge (A9828029 only)	1 off	4. Fixing	1 off



## Warning

The accessory kits covered in this instruction are designed for use on specific models of Triumph motorcycle. The accessory kits and the models applicable are listed at the start of the instruction. They should not be fitted to any other Triumph model or to any other manufacturer's motorcycle. Fitting an accessory kit to a Triumph model not listed, or to any other manufacturer's motorcycle will affect the performance, stability and handling of the motorcycle. This may affect the rider's ability to control the motorcycle and may result in loss of motorcycle control and an accident.



## Warning

Always have Triumph approved parts, accessories and conversions fitted by a trained technician of an authorised Triumph dealer. The fitment of parts, accessories and conversions by a technician who is not of an authorised Triumph dealer may affect the handling, stability or other aspects of the motorcycle's operation which may result in loss of motorcycle control and an accident.



## Warning

Throughout this operation, ensure that the motorcycle is stabilised and adequately supported to prevent risk of injury from the motorcycle falling.



## Warning

A torque wrench of known accurate calibration must be used when fitting this accessory kit. Failure to tighten any of the fasteners to the correct torque specification may affect motorcycle performance, handling and stability. This may result in loss of motorcycle control and an accident.

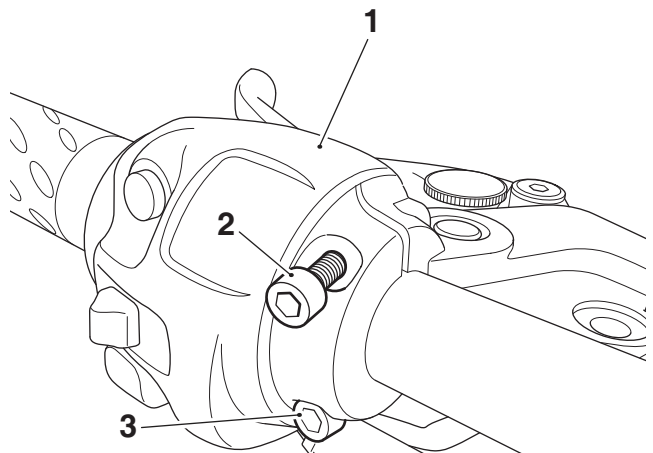
### Note:

- Triumph offers a broad range of approved genuine accessories for your motorcycle. We cannot therefore cover all possible equipment variations in these instructions. For removal and installation of Triumph Genuine Accessories, always refer to the instructions supplied with the respective accessory kit. To obtain additional copies of any Triumph accessory instructions, visit [www.triumphinstructions.com](http://www.triumphinstructions.com) or contact your authorised Triumph dealer.

## Installation

### Note:

- The auxiliary instruments can be fitted to the left hand or right hand side upper switch housing fixing, with one instrument at each side.
  - The fitting procedure is the same for both left hand and right hand side. This instruction details fitment to the left hand side upper switch housing fixing.
- Remove the upper switch housing fixing. Retain the fixing for reuse. Loosen the lower switch housing fixing, do not remove the fixing.



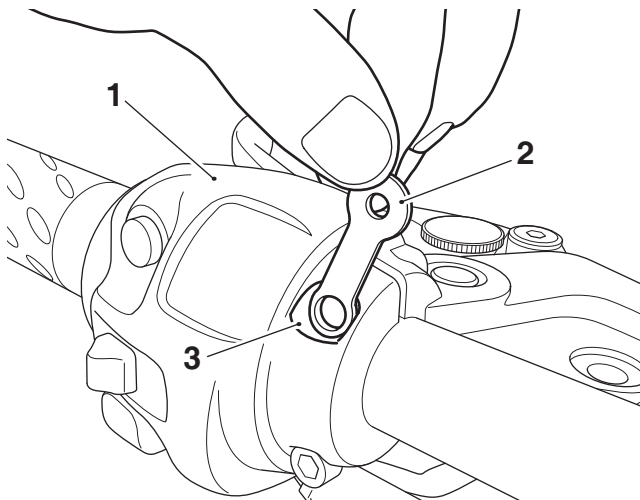
- Switch housing, left hand shown
- Upper fixing
- Lower fixing



## Caution

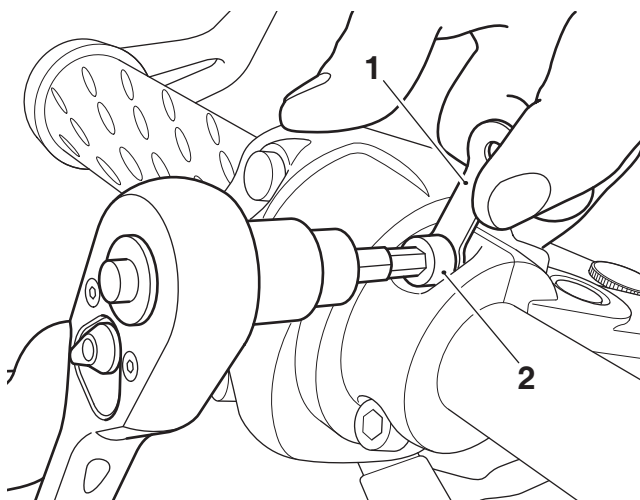
When fitting the mounting bracket to the switch housing ensure the bracket locates correctly in the switch housing fixing recess and flat against the fixing point. If the mounting bracket is not located correctly in the switch housing fixing recess it could result in damage to the switch housing when tightening the fixing.

2. Position the mounting bracket with the smaller head profile correctly located in the switch housing upper fixing recess, as shown. Ensure the mounting bracket is flat against the fixing point.



1. Switch housing (left hand shown)
2. Mounting bracket
3. Recess, upper fixing

3. Refit the upper switch housing fixing. Support the mounting bracket and ensure it remains correctly in the switch housing fixing recess. Tighten the fixing to **12 Nm**.



1. Fixing
2. Mounting bracket

4. Tighten the lower switch housing fixing to **12 Nm**.

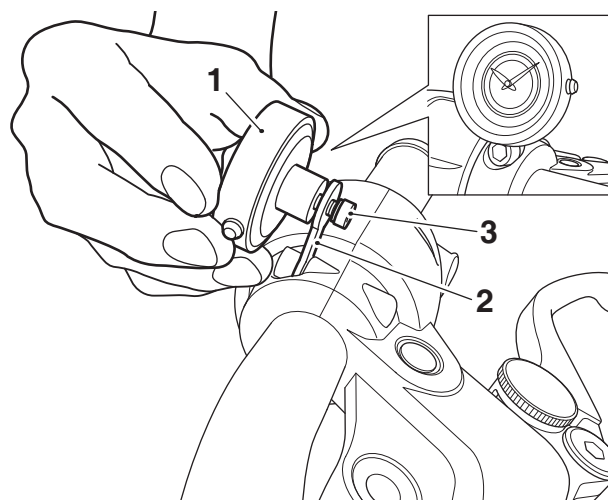


## Warning

When fitting auxiliary instruments, ensure the view to the instruments, warning lights and motorcycle controls is not impaired.

If the view to the instruments, warning lights and motorcycle controls is impaired, the rider may not be in full control of the motorcycle which may result in loss of motorcycle control and an accident.

5. Fit the auxiliary instrument to the mounting bracket. Ensure the orientation of the auxiliary instrument is correct and secure with the fixing provided in the kit. Tighten the fixing to **4 Nm**.



1. Auxiliary instrument
2. Mounting bracket
3. Fixing



## Caution

Move the handlebar to the left and right full lock while checking that the auxiliary instruments do not contact the fuel tank or any other part of the motorcycle. This will result in damage to the fuel tank or other parts of the motorcycle.



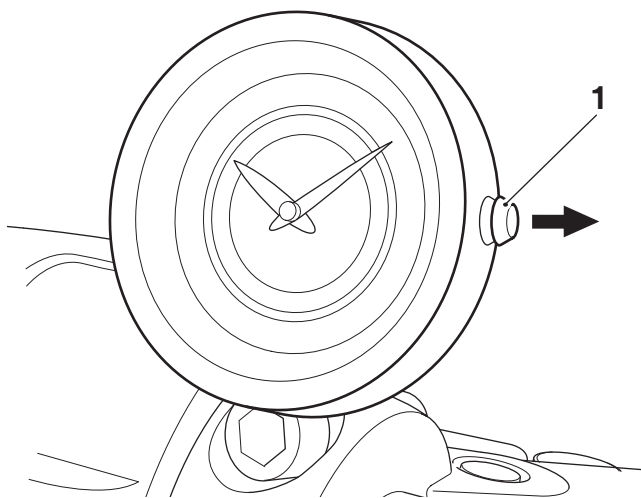
## Warning

Move the handlebars to left and right full lock while checking that the auxiliary instruments do not restrict full lock operation. Any component that will restrict the steering may result in loss of motorcycle control and an accident.

## Auxiliary Clock

### Setting the Time

1. Pull the clock adjuster stem out until it clicks once.



1. **Clock adjuster stem**
2. Turn the clock adjuster stem clockwise, or anti-clockwise to set the correct time.
3. Push the clock adjuster stem in to restart the clock.

### Battery Replacement

1. For battery replacement take the auxiliary clock to a local watch repair shop.

#### **Warning**

After fitting the accessory kit the motorcycle will exhibit new handling characteristics. Operate the motorcycle in a safe area free from traffic to gain familiarity with any new characteristics. Operation of the motorcycle when not familiar with any new handling characteristics may result in loss of motorcycle control and an accident.

#### **Warning**

If, after fitting this accessory kit, you have any doubt about the performance of any aspect of the motorcycle, contact an authorised Triumph dealer and do not ride the motorcycle until the authorised dealer has declared it fit for use. Riding a motorcycle when there is any doubt as to any aspect of the performance of the motorcycle may result in loss of motorcycle control and an accident.

#### **Warning**

Never ride an accessory-equipped motorcycle at speeds above 80 mph (130 km/h).

The presence of accessories will cause changes in the stability and handling of the motorcycle. Failure to allow for changes in motorcycle stability may result in loss of motorcycle control and an accident.

Remember that the 80 mph (130 km/h) limit will be reduced by the fitting of non-approved accessories, incorrect loading, worn tyres, overall motorcycle condition and poor road or weather conditions.

#### **Warning**

The motorcycle must not be operated above the legal road speed limit except in closed-course conditions.

#### **Warning**

Only operate this Triumph motorcycle at high speed in closed-course, on-road competition or on closed-course racetracks. High-speed operation should only be attempted by riders who have been instructed in the techniques necessary for high speed riding and are familiar with the motorcycle's characteristics in all conditions.

High-speed operation in any other circumstances is dangerous and may result in loss of motorcycle control and an accident.