



## Accessory Fitting Instructions

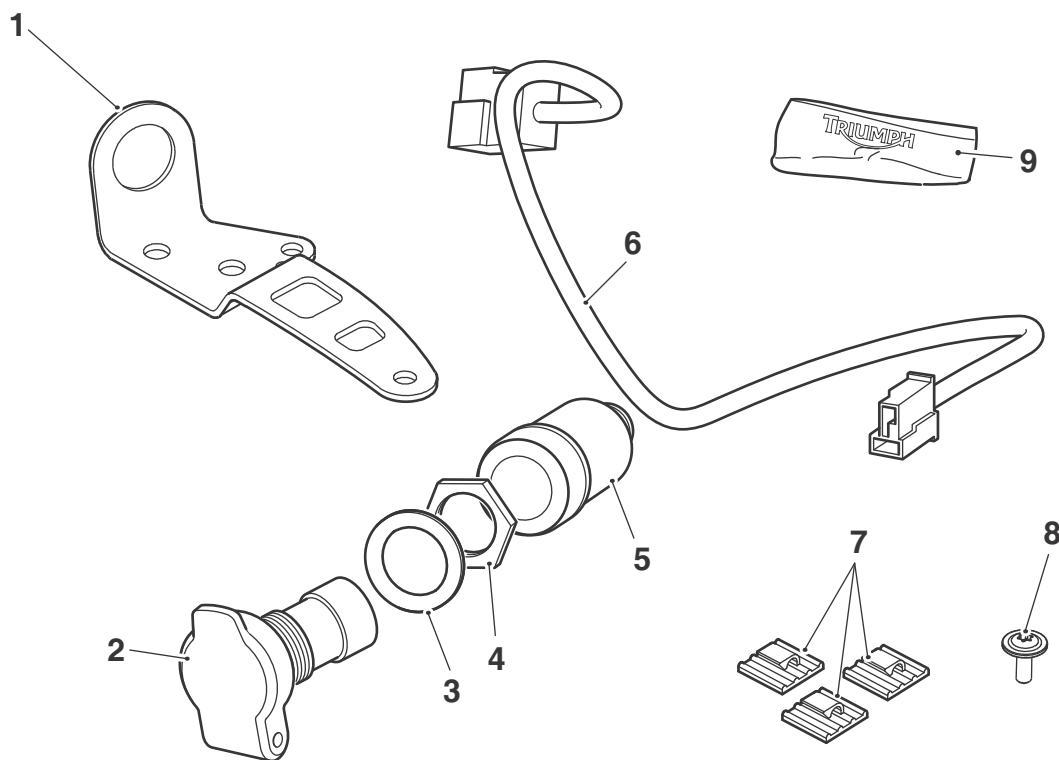
Auxiliary Power Socket Kit	
Kit number	Models Affected
A9828027	Street Triple S, Street Triple S 660cc, Street Triple R from VIN 793032, Street Triple R LRH (Low Ride Height), Street Triple RS

Thank you for choosing this Triumph genuine accessory kit. This accessory kit is the product of Triumph's use of proven engineering, exhaustive testing, and continuous striving for superior reliability, safety and performance.

Completely read all of these instructions before commencing the installation of the accessory kit in order to become thoroughly familiar with the kit's features and the installation process.

These instructions should be considered a permanent part of your accessory kit, and should remain with it even if your accessory equipped motorcycle is subsequently sold.

### Parts supplied



1. Mounting bracket	1 off	6. Wiring sub-harness	1 off
2. Socket, auxiliary power	1 off	7. Cable clip	3 off
3. Plastic washer, M18	1 off	8. Fixing, M4 x 11 mm	1 off
4. Nut	1 off	9. Cleaning wipe	1 off
5. Rubber cover	1 off		

## Warning

The accessory kits covered in this instruction are designed for use on specific models of Triumph motorcycle. The accessory kits and the models applicable are listed at the start of the instruction. They should not be fitted to any other Triumph model or to any other manufacturer's motorcycle. Fitting an accessory kit to a Triumph model not listed, or to any other manufacturer's motorcycle will affect the performance, stability and handling of the motorcycle. This may affect the rider's ability to control the motorcycle and may result in loss of motorcycle control and an accident.

## Warning

Always have Triumph approved parts, accessories and conversions fitted by a trained technician of an authorised Triumph dealer. The fitment of parts, accessories and conversions by a technician who is not of an authorised Triumph dealer may affect the handling, stability or other aspects of the motorcycle's operation which may result in loss of motorcycle control and an accident.

## Warning

Throughout this operation, ensure that the motorcycle is stabilised and adequately supported to prevent risk of injury from the motorcycle falling.

## Warning

A torque wrench of known accurate calibration must be used when fitting this accessory kit. Failure to tighten any of the fasteners to the correct torque specification may affect motorcycle performance, handling and stability. This may result in loss of motorcycle control and an accident.

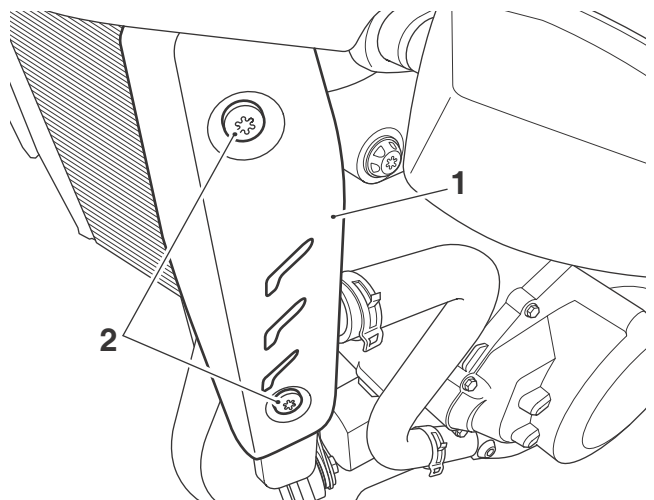
## Warning

If the engine has recently been running, the exhaust system will be hot. Before working on or near the exhaust system, allow sufficient time for the system to cool, as touching any part of a hot exhaust could cause burn injuries.

### Note:

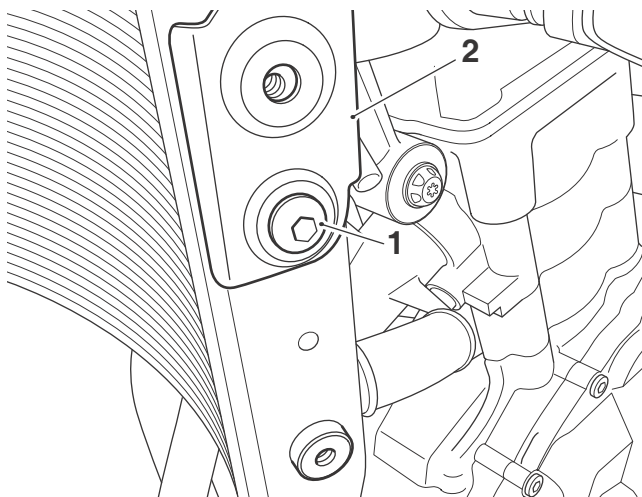
- Triumph offers a broad range of approved genuine accessories for your motorcycle. We cannot therefore cover all possible equipment variations in these instructions. For removal and installation of Triumph Genuine Accessories, always refer to the instructions supplied with the respective accessory kit. To obtain additional copies of any Triumph accessory instructions, visit [www.triumphinstructions.com](http://www.triumphinstructions.com) or contact your authorised Triumph dealer.

- Remove the seat, as described in the Service Manual.
- Disconnect the battery, negative (black) lead first.
- Remove the fuel tank, as described in the Service Manual.
- Remove the airbox, as described in the Service Manual.
- Disconnect the left hand indicator harness connector from the main harness connector. Note the routing of the indicator harness for installation.
- Remove the left hand radiator cowl finisher. Retain the finisher and fixings for reuse.



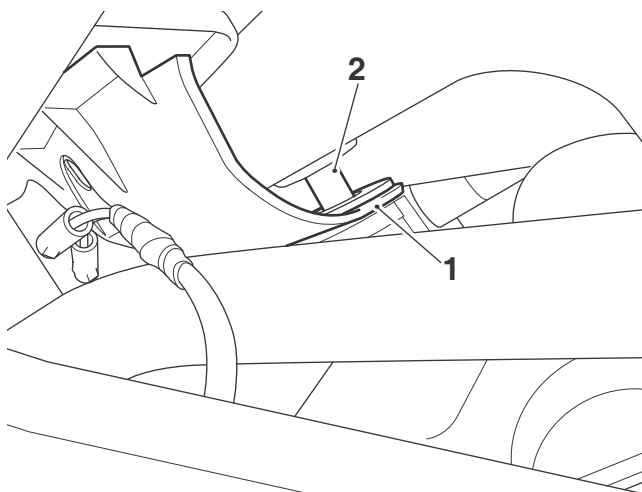
- Radiator cowl finisher
- Fixings

7. Remove the left hand radiator cowl fixing. Retain the fixing for reuse.



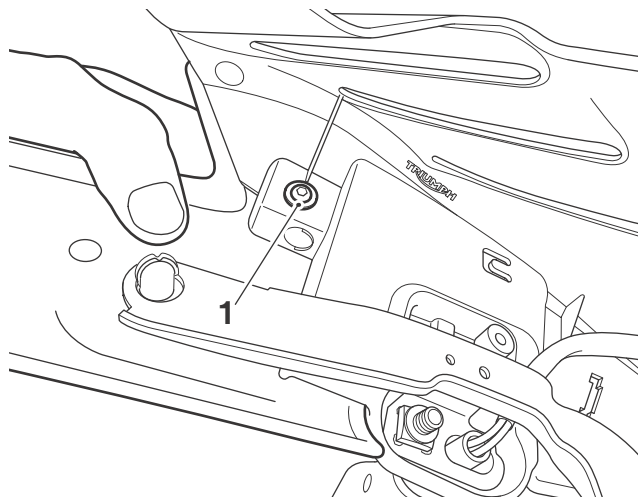
1. Fixing  
2. Radiator cowl

8. Release the left hand bodywork panel from the stem on the headstock infill panel and remove the bodywork panel and indicator assembly.



1. Body work panel, left hand  
2. Stem, headstock infill panel

9. Remove the inner radiator cowl rear fixing. Retain the fixing for reuse.



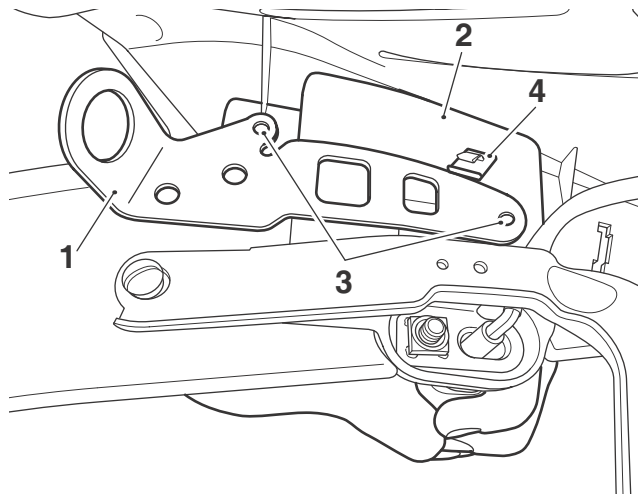
1. Fixing

10. Remove the indicator harness from the cable clips on the inner radiator cowl.

**Note:**

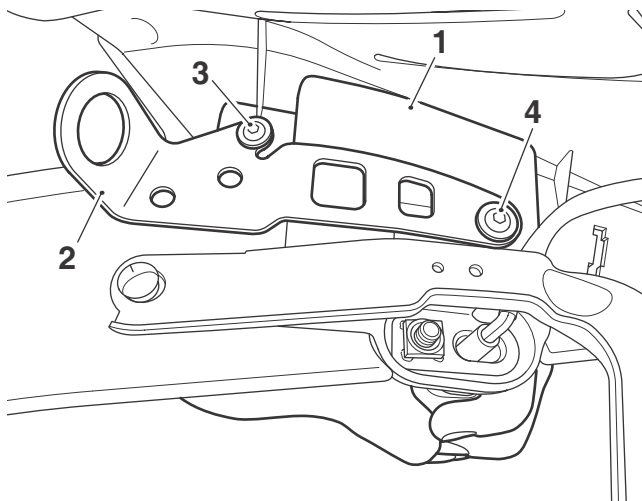
- If the cable clip, shown below, prevents the mounting bracket from aligning correctly with the fixing positions in the inner radiator cowl, remove and discard the cable clip.

11. Position the mounting bracket from the kit on to the inner radiator cowl in the orientation shown.



1. Mounting bracket  
2. Inner radiator cowl  
3. Fixing positions  
4. Cable clip

12. Fit the original fixing and new M4 x 11 mm fixing from the kit to secure the mounting bracket to the inner radiator cowl. Tighten the fixings to **1.5 Nm**.



1. Inner radiator cowl
2. Mounting bracket
3. Fixing, original
4. Fixing, M4 x 11 mm

13. Collect the cable clips from the kit.

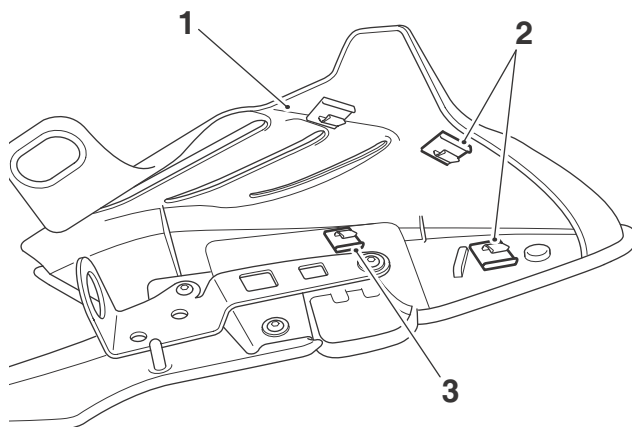
**Note:**

- Read the warning notices printed on the cleaning wipe packet provided in the kit.
- The inner radiator cowl surface to which the cable clips are affixed must be clean and dry to ensure that the adhesive has a sound base to adhere to. Use the cleaning wipe supplied for this purpose.

**Note:**

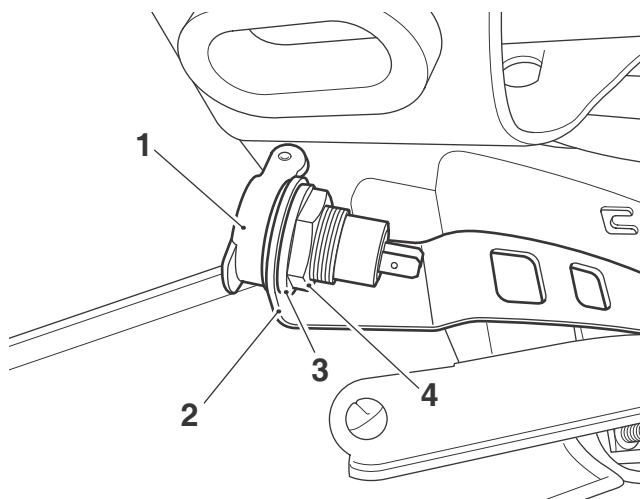
- The indicator harness cable clip shown below is only required if the original cable clip was removed to allow correct alignment of the mounting bracket.

14. Remove the protective tape from the cable clips and attach them to the inner radiator cowl in the positions shown below.



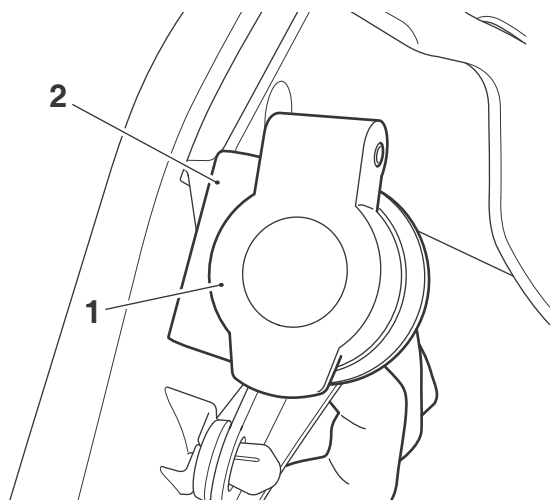
1. Inner radiator cowl
2. Cable clips
3. Cable clip, indicator harness

15. Fit the auxiliary power socket into the mounting bracket. Fit the plastic washer and the large auxiliary power socket nut. Do not fully tighten the auxiliary power socket nut at this stage



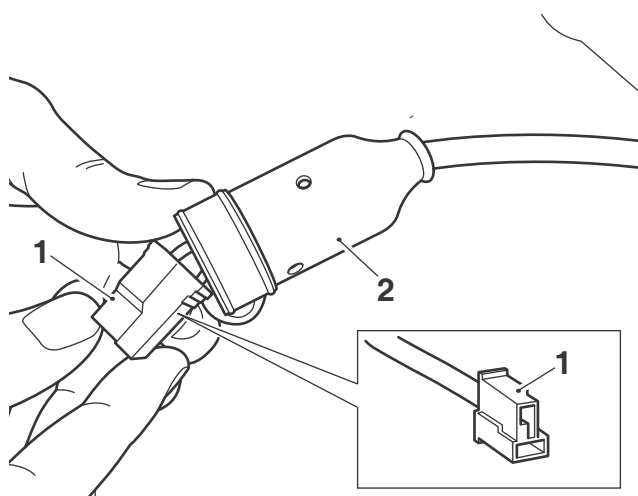
1. Auxiliary power socket
2. Mounting bracket
3. Plastic washer
4. Nut

16. Ensure the auxiliary power socket is positioned in the orientation shown below. Tighten the large auxiliary power socket nut to **5 Nm**.



1. Auxiliary power socket  
2. Mounting bracket

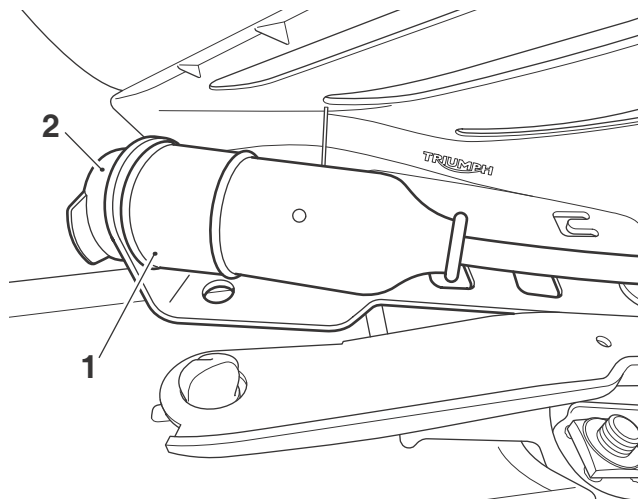
17. Collect the wiring sub-harness and rubber cover from the kit.  
18. Feed the auxiliary power socket connector on the sub-harness through the rubber cover, as shown.



1. Auxiliary power socket connector  
2. Rubber cover

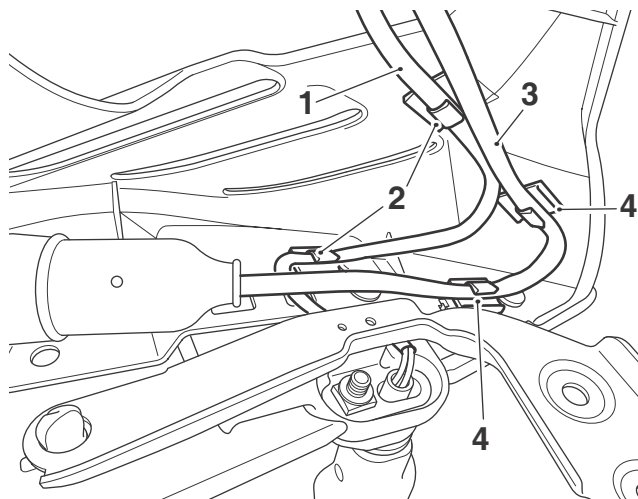
19. Connect the sub-harness socket connector to the auxiliary power socket.

20. Slide the rubber cover over the rear of the auxiliary power socket, as shown below.



1. Rubber cover  
2. Auxiliary power socket

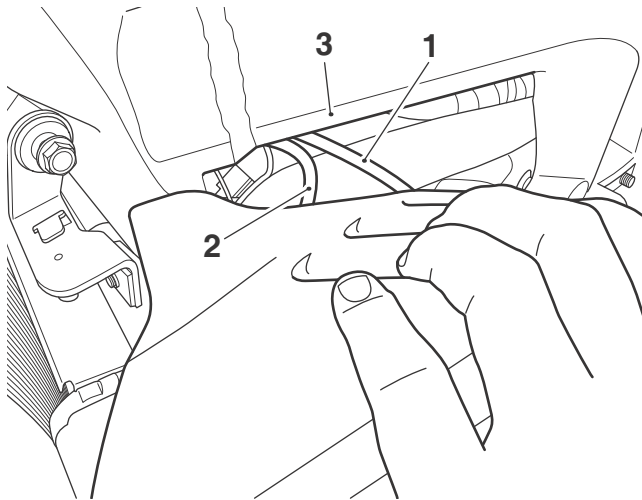
21. Secure the indicator harness to the two cable clips, as shown below. Route the auxiliary power socket sub-harness around the inner radiator cowl and secure in the two additional cable clips as shown below.



1. Indicator harness  
2. Cable clips, indicator harness  
3. Auxiliary power socket sub-harness  
4. Cable clips, sub-harness

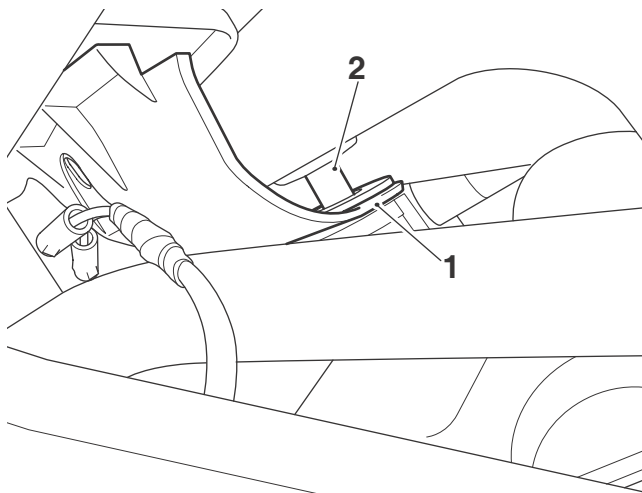
22. Route the left hand indicator harness through the motorcycle frame as noted on removal and reconnect the indicator harness connector to the main harness connector.

23. Route the auxiliary power socket sub-harness through the motorcycle frame to the area below the airbox, following the routing of the left hand indicator harness.



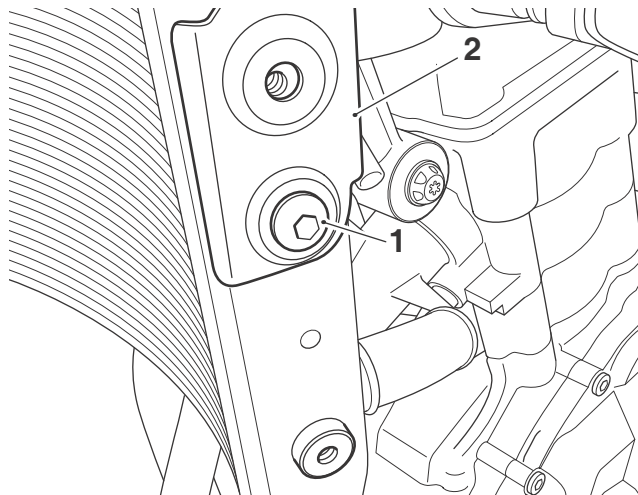
1. Indicator harness  
2. Auxiliary power socket sub-harness  
3. Motorcycle frame

24. Refit the left hand bodywork panel and indicator assembly ensuring the grommet locates correctly on the stem on the headstock infill panel as shown.



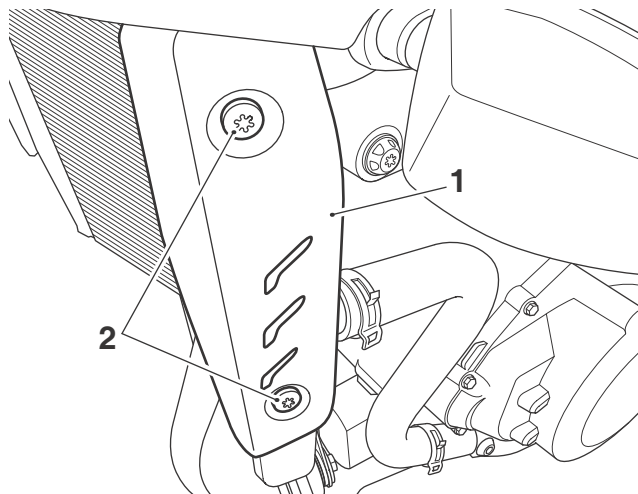
1. Grommet, body work panel  
2. Stem, headstock infill panel

25. Refit the left hand radiator cowl fixing. Tighten to **8 Nm**.



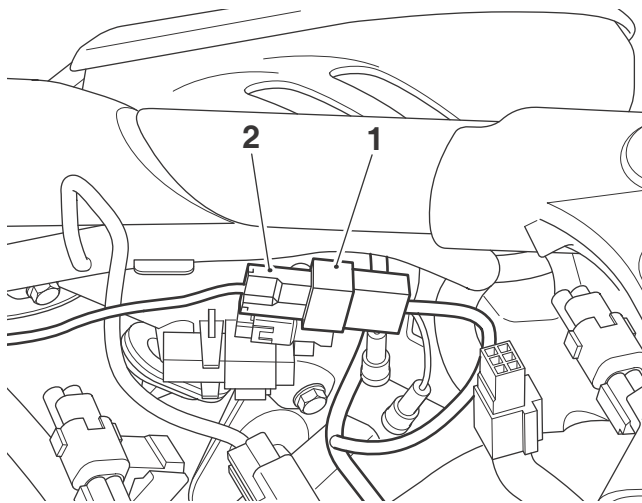
1. Fixing  
2. Radiator cowl

26. Refit the left hand radiator cowl finisher with the original fixings. Tighten the fixings to **4 Nm**.



1. Finisher  
2. Fixings

27. Locate the main wiring harness auxiliary power socket connector in the area under the airbox on the left hand side of the motorcycle. Connect the auxiliary power socket sub-harness connector to the main wiring harness connector.



1. Auxiliary power socket sub-harness connector  
2. Main wiring harness connector



### Caution

A wiring harness which becomes trapped or kinked during installation, or general motorcycle operation, may result in wiring harness damage and electrical malfunctions.

28. Check the routing of the auxiliary socket sub-harness and ensure the harness is not kinked at any point from the auxiliary power socket to the main harness connection. Ensure any bends in the harness follow a smooth curve.
29. Refit the airbox, as described in the Service Manual.
30. Refit the fuel tank, as described in the Service Manual.
31. Reconnect the battery, positive (red) lead first and tighten the battery terminals to **4.5 Nm**.
32. Refit the seat, as described in the Service Manual.

## Power Supply

### Note:

- **The auxiliary power socket provides a continuous 12 Volt power supply regardless of the ignition being switched on or off. Use of the auxiliary socket with the ignition switched off will drain the motorcycle battery.**

The auxiliary power socket will provide a 12 Volt electrical supply.

The auxiliary power socket is protected by a 10 Amp fuse, therefore items with a current draw greater than 10 Amps (120 Watts) must not be plugged in to the auxiliary power socket.

Refer to the Service Manual for the fuse location.



### Warning

When connecting any electrical device to the auxiliary power socket ensure the wiring of the device is routed correctly and cannot contact any hot surfaces of the motorcycle or interfere with any of the motorcycle controls. Contact with a hot surface may result in wiring harness damage and electrical malfunctions. Any interference with the motorcycle controls may result in loss of motorcycle control and an accident.



 **Warning**

If, after fitting this accessory kit, you have any doubt about the performance of any aspect of the motorcycle, contact an authorised Triumph dealer and do not ride the motorcycle until the authorised dealer has declared it fit for use. Riding a motorcycle when there is any doubt as to any aspect of the performance of the motorcycle may result in loss of motorcycle control and an accident.

 **Warning**

Never ride an accessory-equipped motorcycle at speeds above 80 mph (130 km/h).

The presence of accessories will cause changes in the stability and handling of the motorcycle. Failure to allow for changes in motorcycle stability may result in loss of motorcycle control and an accident.

Remember that the 80 mph (130 km/h) limit will be reduced by the fitting of non-approved accessories, incorrect loading, worn tyres, overall motorcycle condition and poor road or weather conditions.

 **Warning**

The motorcycle must not be operated above the legal road speed limit except in closed-course conditions.

 **Warning**

Only operate this Triumph motorcycle at high speed in closed-course, on-road competition or on closed-course racetracks. High-speed operation should only be attempted by riders who have been instructed in the techniques necessary for high-speed riding and are familiar with the motorcycle's characteristics in all conditions.

High-speed operation in any other circumstances is dangerous and may result in loss of motorcycle control and an accident.