

## Accessory Fitting Instructions

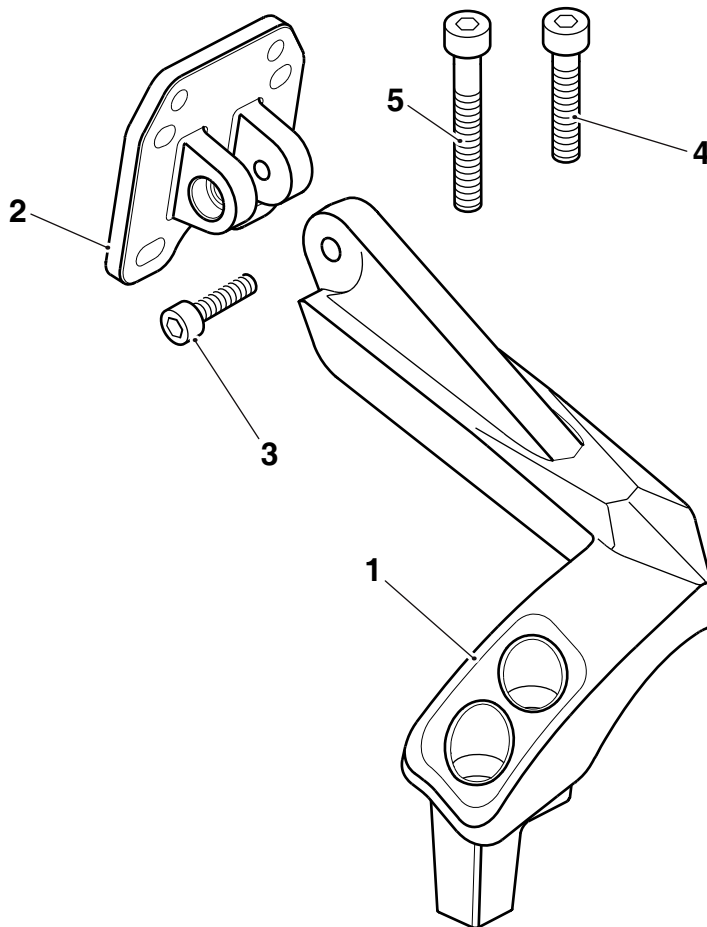
GPS Mounting Kit	
Kit number	Models Affected
A9828022	Tiger Explorer XR, Tiger Explorer XR <sub>x</sub> , Tiger Explorer XR <sub>T</sub> , Tiger Explorer XC, Tiger Explorer XC <sub>x</sub> , Tiger Explorer XC <sub>A</sub>

Thank you for choosing this Triumph genuine accessory kit. This accessory kit is the product of Triumph's use of proven engineering, exhaustive testing, and continuous striving for superior reliability, safety and performance.

Completely read all of these instructions before commencing the installation of the accessory kit in order to become thoroughly familiar with the kit's features and the installation process.

These instructions should be considered a permanent part of your accessory kit, and should remain with it even if your accessory equipped motorcycle is subsequently sold.

### Parts supplied



1. Mounting arm	1 off	4. Fixing, M6 x 30 mm	1 off
2. Mounting plate, GPS unit	1 off	5. Fixing, M6 x 40 mm	1 off
3. Fixing, M5 x 20 mm	1 off		

**Warning**

The accessory kits covered in this instruction are designed for use on specific models of Triumph motorcycle. The accessory kits and the models applicable are listed at the start of the instruction. They should not be fitted to any other Triumph model or to any other manufacturer's motorcycle. Fitting an accessory kit to a Triumph model not listed, or to any other manufacturer's motorcycle will affect the performance, stability and handling of the motorcycle. This may affect the rider's ability to control the motorcycle and could cause an accident.

**Warning**

Always have Triumph approved parts, accessories and conversions fitted by a trained technician of an authorised Triumph dealer. The fitment of parts, accessories and conversions by a technician who is not of an authorised Triumph dealer may affect the handling, stability or other aspects of the motorcycle's operation which may result in loss of motorcycle control and an accident.

**Warning**

Throughout this operation, ensure that the motorcycle is stabilised and adequately supported to prevent risk of injury from the motorcycle falling.

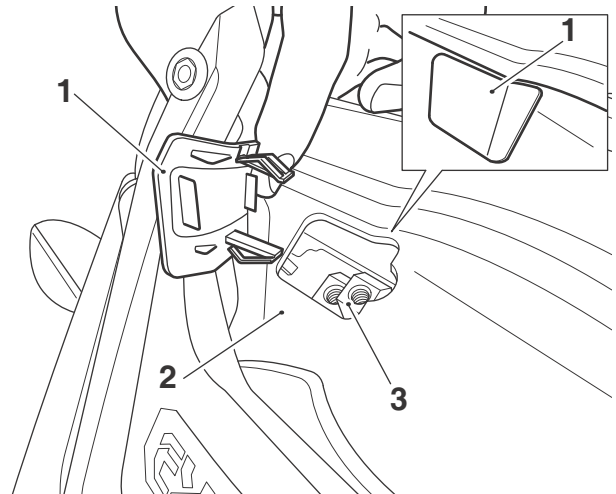
**Warning**

A torque wrench of known accurate calibration must be used when fitting this accessory kit. Failure to tighten any of the fasteners to the correct torque specification may affect motorcycle performance, handling and stability. This may result in loss of motorcycle control and an accident.

**Note:**

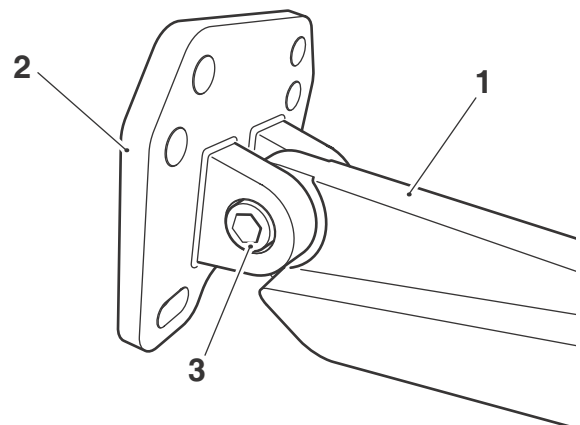
- **Triumph offers a broad range of approved genuine accessories for your motorcycle. We cannot therefore cover all possible equipment variations in these instructions. For removal and installation of Triumph Genuine Accessories, always refer to the instructions supplied with the respective accessory kit. To obtain additional copies of any Triumph accessory instructions, visit [www.triumphinstructions.com](http://www.triumphinstructions.com) or contact your authorised Triumph dealer.**

1. Remove the windscreen, as described in the Service Manual.
2. Remove the blanking cover from the top of the instrument cowl to expose the mounting lugs beneath taking care not to damage the blanking cover or instrument cowl. Retain the blanking cover for reuse if the motorcycle is to be returned to its original condition.



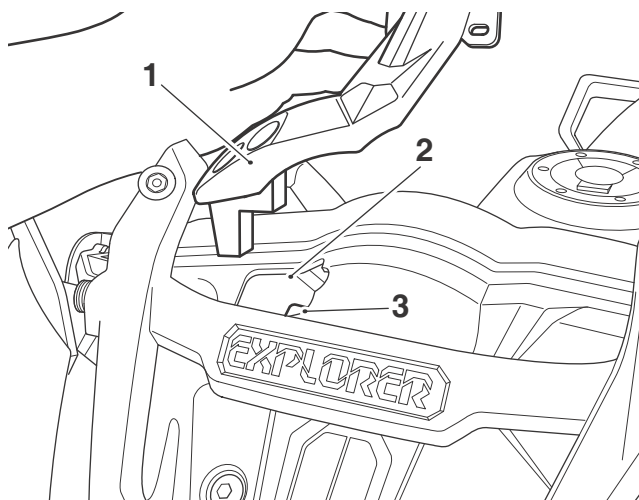
1. Blanking cover
2. Instrument cowl
3. Mounting lugs

3. Fit the mounting plate to the mounting arm with the M5 x 20 mm fixing provided, as shown. Do not fully tighten at this stage.



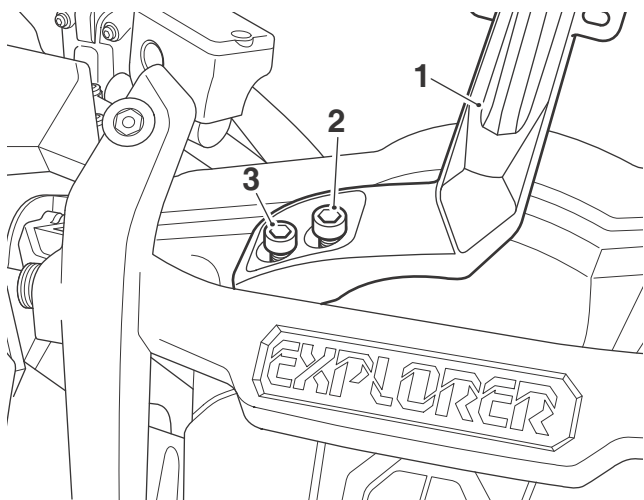
1. GPS mounting arm
2. GPS mounting plate
3. Fixing, M5 x 20 mm

- Fit the mounting arm through the aperture in the instrument cowl in the orientation shown and locate the arm on to the mounting lugs.



- GPS mounting arm
- Aperture, instrument cowl
- Mounting lugs

- Fit the M6 x 30 mm and M6 x 40 mm fixings in the positions shown below. Tighten the fixings to **7 Nm**.



- GPS mounting arm
- Fixing, M6 x 30 mm
- Fixing, M6 x 40 mm

### Warning

The accessory GPS mounting kit should not be fitted with a GPS unit, including its holder, weighing more than 0.370 kg (11.9 oz.).

If a GPS assembly weighing more than 0.370 kg (11.9 oz.) is fitted, it may affect the stability of the motorcycle, leading to loss of motorcycle control and an accident.

### Warning

Always ensure that the newly installed wiring does not chafe against other parts of the motorcycle such that it may be rubbed through and cause an electrical problem. In addition, always ensure that the newly installed wiring will not restrict steering movement. Both conditions are hazardous and could give rise to a dangerous riding condition resulting in a fire, loss of motorcycle control and an accident.

- Install the GPS unit (not supplied) to the mount following the GPS manufacturers instructions.
- Refit the windscreen, as described in the Service Manual.
- Adjust the angle of the GPS mounting plate to the preferred position. Tighten the M5 x 20 mm fixing to **4 Nm**.

### Warning

When mounting a GPS unit to the mounting kit, ensure the view to the instruments is not impaired.

If the view to the instruments is impaired, the rider may not be in full control of the motorcycle which could lead to an accident.

### Warning

Move the handlebars to left and right full lock while checking that the GPS mounting or GPS unit do not restrict full lock operation. Check cables or harnesses do not bind or restrict full lock operation. Any component, cables or harnesses that will restrict the steering may cause loss of control of the motorcycle and an accident.

### Caution

Move the handlebar to the left and right full lock while checking that the GPS mounting or GPS unit do not contact the fuel tank, screen, tank bag (if fitted) or any other part of the motorcycle. This will result in damage to the fuel tank, screen or other parts of the motorcycle.

### Caution

Adjust the windscreen through its range of travel and check that there is no contact between the windscreen and the GPS mount or GPS unit components. This will result in damage to the windscreen, GPS mount or GPS unit.

9. Adjust the GPS mounting as required to ensure the GPS mounting or GPS unit do not contact any part of the motorcycle. Tighten the M5 x 20 mm fixing to **4 Nm**.



### Warning

Do not use a mobile phone when you ride.

Do not text while you ride.

Do not attempt to adjust any GPS device while you ride.

Telephone calls, texting or any attempt to use your mobile device for any purpose will distract you. This will cause accidents that can seriously injure or kill riders, passengers, occupants in other vehicles and pedestrians.



### Warning

After fitting the accessory kit the motorcycle will exhibit new handling characteristics. Operate the motorcycle in a safe area free from traffic to gain familiarity with any new characteristics. Operation of the motorcycle when not familiar with any new handling characteristics may result in loss of motorcycle control and an accident.



### Warning

If, after fitting this accessory kit, you have any doubt about the performance of any aspect of the motorcycle, contact an authorised Triumph dealer and do not ride the motorcycle until the authorised dealer has declared it fit for use. Riding a motorcycle when there is any doubt as to any aspect of the performance of the motorcycle may result in loss of control of the motorcycle leading to an accident.



### Warning

Never ride an accessory-equipped motorcycle at speeds above 80 mph (130 km/h).

The presence of accessories will cause changes in the stability and handling of the motorcycle. Failure to allow for changes in motorcycle stability may lead to loss of control or an accident.

Remember that the 80 mph (130 km/h) limit will be reduced by the fitting of non-approved accessories, incorrect loading, worn tyres, overall motorcycle condition and poor road or weather conditions.



### Warning

The motorcycle must not be operated above the legal road speed limit except in closed-course conditions.



### Warning

Only operate this Triumph motorcycle at high speed in closed-course, on-road competition or on closed-course racetracks. High-speed operation should only be attempted by riders who have been instructed in the techniques necessary for high-speed riding and are familiar with the motorcycle's characteristics in all conditions.

High-speed operation in any other circumstances is dangerous and will lead to loss of motorcycle control and an accident.