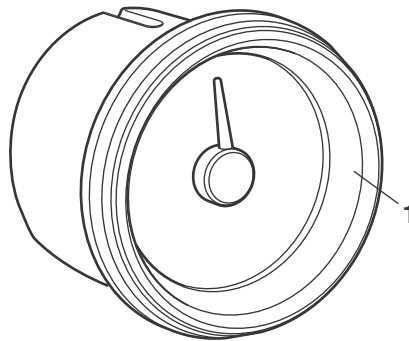


Fitting Instructions: Bonneville America A9828006

Thank you for choosing this Triumph genuine accessory kit. This accessory kit is the product of Triumph's use of proven engineering, exhaustive testing, and continuous striving for superior reliability, safety and performance.

Completely read all of these instructions before commencing the installation of the accessory kit in order to become thoroughly familiar with the kit's features and the installation process.

These instructions should be considered a permanent part of your accessory kit, and should remain with it even if your accessory-equipped motorcycle is subsequently sold.



Parts Supplied:

- | | |
|---------------|-------|
| 1. Tachometer | 1 off |
|---------------|-------|



Warning

This accessory kit is designed for use on Triumph Bonneville America motorcycles only and should not be fitted to any other Triumph model or to any other manufacturer's motorcycle. Fitting this accessory kit to any other Triumph model or to any other manufacturer's motorcycle, may interfere with the rider and could affect the stability and handling of the motorcycle leading to loss of control and an accident.



Warning

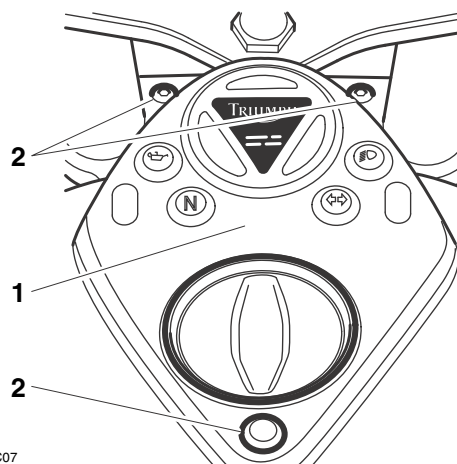
Always have Triumph approved parts, accessories and conversions fitted by a trained technician of an authorised Triumph dealer. The fitment of parts, accessories and conversions by a technician who is not of an authorised Triumph dealer may affect the handling, stability or other aspects of the motorcycles operation which may result in loss of motorcycle control and an accident.



Warning

Throughout this operation, ensure that the motorcycle is stabilised and adequately supported to prevent risk of injury from the motorcycle falling.

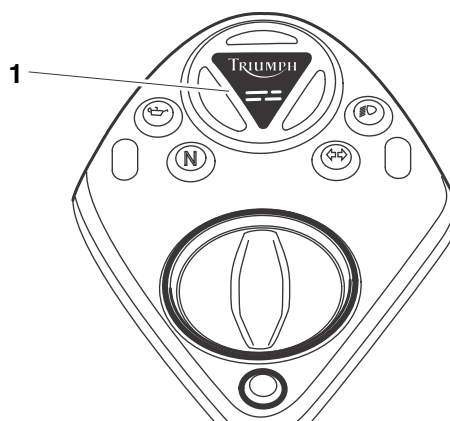
1. Remove the seat, as described in the service manual.
2. Disconnect the battery, negative (black) lead first.
3. Release the screws securing the warning light panel to the fuel tank. Retain the screws for re-use.



T908.PIC07

1. Warning light panel
2. Screws

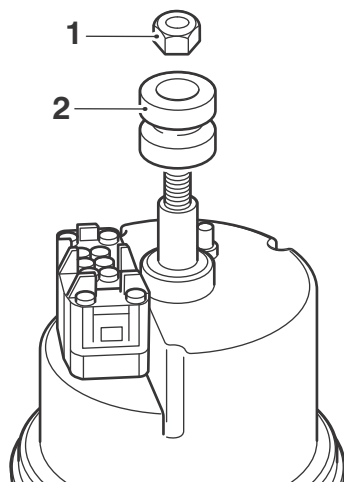
4. Raise the panel and disconnect the warning light sub-harness from the main wiring harness.
5. From the underside of the warning light panel, push out the tachometer blanking plug. Retain the blanking plug if the motorcycle is to be returned to its original condition.



T908_1

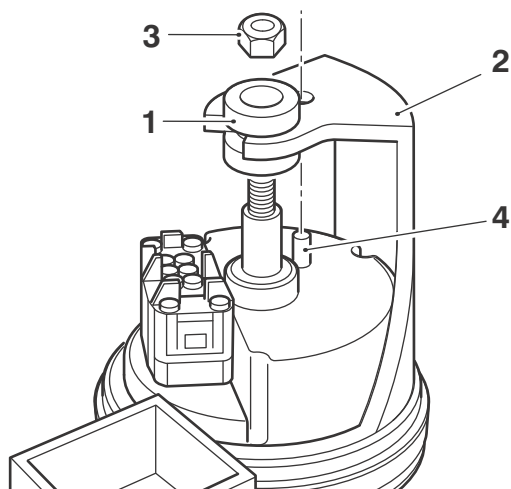
1. Blanking plug

6. Remove the nut and grommet from the tachometer. Retain the nut and grommet for re-use.



1. Nut
2. Grommet

7. Fit the grommet to the tachometer mounting post on the underside of the warning light panel as shown below.
8. Align the tachometer locating peg with the hole in the mounting post and secure with the original M5 nut. Tighten the nut to **3 Nm**.



1. Grommet
2. Mounting post
3. Nut, M5
4. Locating peg

9. Position the warning light panel to the fuel tank and reconnect the sub-harness to the main wiring harness.
10. The main harness connector for the tachometer is located in the area under the warning light panel.
11. Connect the tachometer harness to the main wiring harness.
12. Reconnect the battery, positive (red) lead first.
13. Check for correct operation of all warning lights, instruments illumination, lights and direction indicators.
14. Install the seat, as described in the service manual.



Warning

If, after fitment of this accessory kit, you have any doubt about the performance of any aspect of the motorcycle, contact an authorised Triumph dealer and do not ride the motorcycle until the authorised Triumph dealer has declared it fit for use. Riding a motorcycle when there is any doubt as to any aspect of the performance of the motorcycle may result in loss of control of the motorcycle leading to an accident.