



Accessory Fitting Instructions

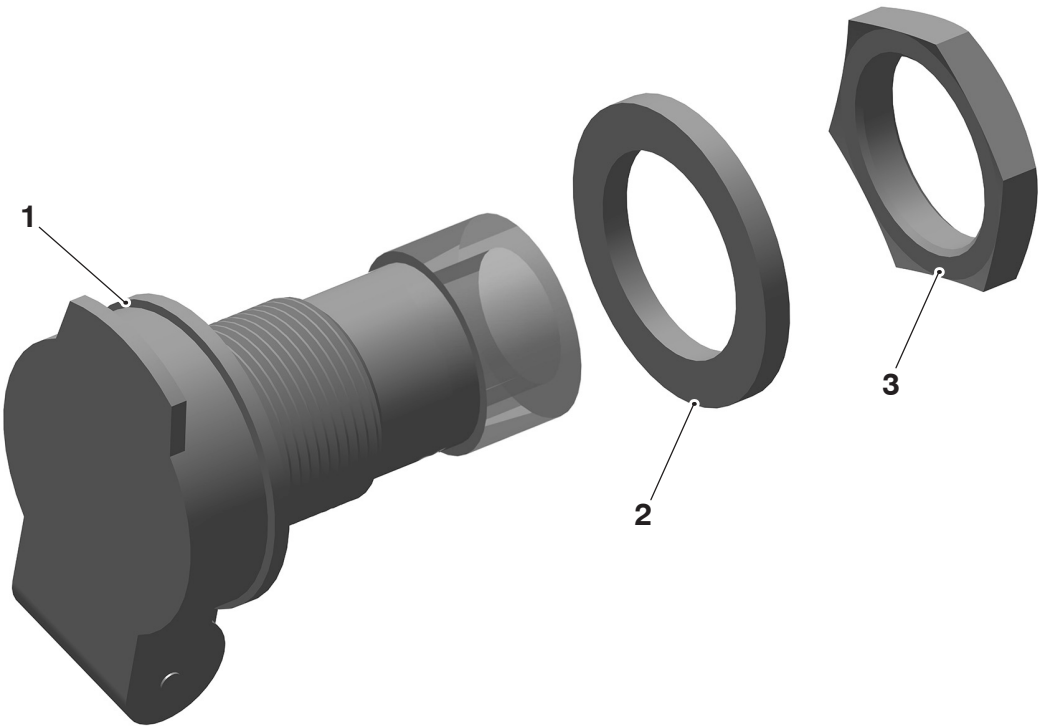
Thank you for choosing this Triumph genuine accessory kit. This accessory kit is the product of Triumph's use of proven engineering, exhaustive testing, and continuous striving for superior reliability, safety and performance.

Completely read all of these instructions before commencing the installation of the accessory kit in order to become thoroughly familiar with the kit's features and the installation process.

These instructions should be considered a permanent part of your accessory kit, and should remain with it even if your accessory equipped motorcycle is subsequently sold.

Auxiliary Power Socket Kit	
Kit Number	Models
A9828005	Tiger XR, Tiger XC, Tiger 800, Tiger 800 XC, Tiger 800 XCx, Tiger 800 XR, Tiger 800 XRx, Tiger 800 XRx LRH, Tiger 900, Tiger 850 Sport, Tiger Sport from VIN AU7774, Tiger Explorer, Tiger Explorer XC, Explorer XR, Explorer XC, Tiger 1200 XR, Trophy Rocket III, Rocket III Classic, Rocket III Touring and America

Parts supplied



1. Auxiliary power socket	1 off	3. Nut	1 off
2. Washer	1 off		

⚠ WARNING

Fit only genuine Triumph accessories to those models approved by Triumph as listed in the associated Triumph fitting instructions.

The accessory kits covered in this instruction are designed for use on specific models of Triumph motorcycle. The accessory kits and the models applicable are listed at the start of the instruction. They should never be fitted to any other Triumph model or to any other manufacturer's motorcycle.

Fitting an accessory kit to a Triumph model not listed, or to any other manufacturer's motorcycle, will affect the performance, stability and handling of the motorcycle.

Failure to follow the advice above may lead to loss of motorcycle control which could result in serious injury or death.

⚠ WARNING

Always have Triumph approved parts, accessories and conversions fitted by a competent person with the specialist knowledge and technical understanding of motorcycles, such as an authorised Triumph dealer.

The fitment of parts, accessories and conversions by a person without the specialist knowledge and technical understanding of motorcycles may affect the handling, stability or other aspects of the motorcycle's operation.

Failure to follow the advice above may lead to loss of motorcycle control which could result in serious injury or death.

⚠ WARNING

A torque wrench of known accurate calibration must be used when fitting this accessory kit.

Failure to tighten any of the fasteners to the correct torque specification may affect motorcycle performance, handling and stability.

Failure to follow the advice above may lead to loss of motorcycle control which could result in serious injury or death.

⚠ WARNING

Make sure the motorcycle is stabilised and adequately supported.

Do not support the motorcycle on any ancillary component, the exhaust system or any other non structural parts of the motorcycle frame.

A correctly supported motorcycle will help prevent it from falling.

An unstable motorcycle may fall resulting in motorcycle damage, serious injury or death.

NOTICE

Triumph offers a broad range of approved genuine accessories for your motorcycle.

We cannot therefore cover all possible equipment variations in these instructions. For removal and installation of Triumph Genuine Accessories, always refer to the instructions supplied with the respective accessory kit.

To obtain additional copies of any Triumph accessory instructions, visit www.triumphinstructions.com or contact your authorised Triumph dealer.

Auxiliary Power Supply

⚠ WARNING

When connecting any electrical device to the auxiliary power socket ensure the wiring of the device is routed correctly and cannot contact any hot surfaces of the motorcycle or interfere with any of the motorcycle controls.

Contact with a hot surface may result in wiring harness damage and electrical malfunctions.

Any interference with the motorcycle controls may lead to loss of motorcycle control which could result in serious injury or death.

NOTICE

The auxiliary power socket is protected by a fuse. Refer to the Service Manual or Owner Manual for the fuse location.

Items with a current draw greater than the limit of the fuse must not be plugged in to the auxiliary power socket.

Refer to the label in the fuse box lid for fuse amperage.

NOTICE

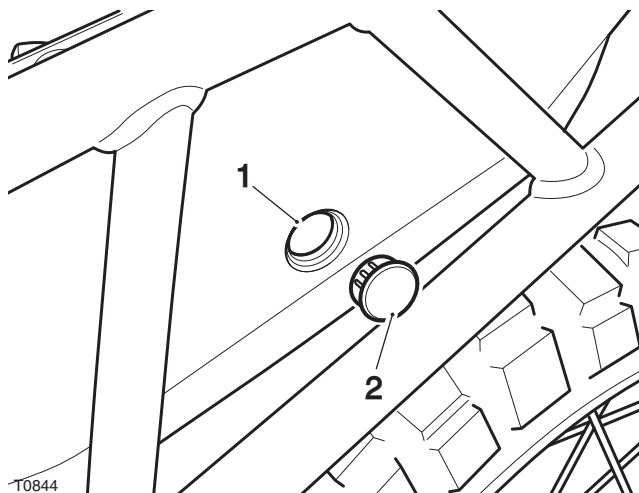
The auxiliary power socket provides a continuous 12 Volt power supply regardless of the ignition being switched on or off.

Use of the auxiliary socket with the ignition switched off will drain the motorcycle battery.

Tiger XR, Tiger XC, Tiger 800, Tiger 800 XC, Tiger 800 XCx, Tiger 800 XR, Tiger 800 XRx, Tiger 800 XRx LRH, Tiger 900, Tiger 850 Sport

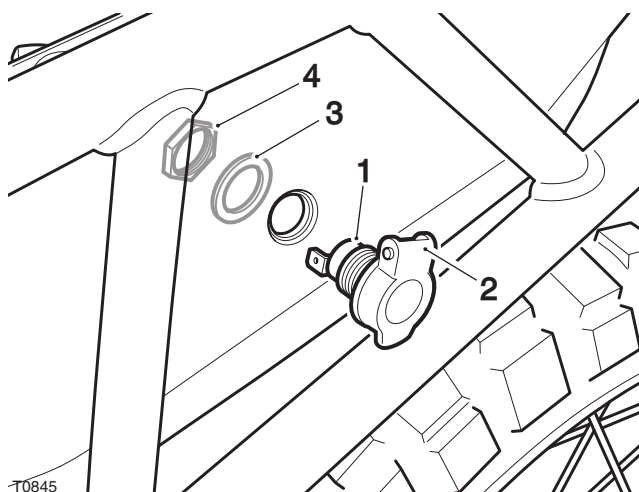
1. Position the motorcycle on a paddock stand.
2. Remove the rider's seat as described in the Owner's Handbook.
3. Disconnect the battery, as described in the Service Manual.

4. Remove the blanking plug from the opening in the left hand side of the battery tray. Retain the blanking plug if the motorcycle is to be returned to its original condition.



1. Battery tray opening
2. Blanking plug

5. Fit the auxiliary power socket to the battery tray, making sure the cover hinge is at the top and the drain hole is closest to the ground. Fit the washer and nut, tightening to **2 Nm**.



1. Auxiliary power socket
2. Cover hinge
3. Washer
4. Nut

6. Locate the auxiliary power socket connector which is taped to the main harness adjacent to the power socket opening in the battery tray.
7. Connect the electrical connector to the power socket.
8. Reconnect the battery as described in the Service Manual.
9. Refit the rider's seat as described in the Owner's Handbook.
10. Remove the paddock stand and place the motorcycle on its side stand.

NOTICE

The auxiliary power socket drain hole must be positioned at the bottom most point in the socket cover. This must be closest point to the ground when the motorcycle is on the side stand.

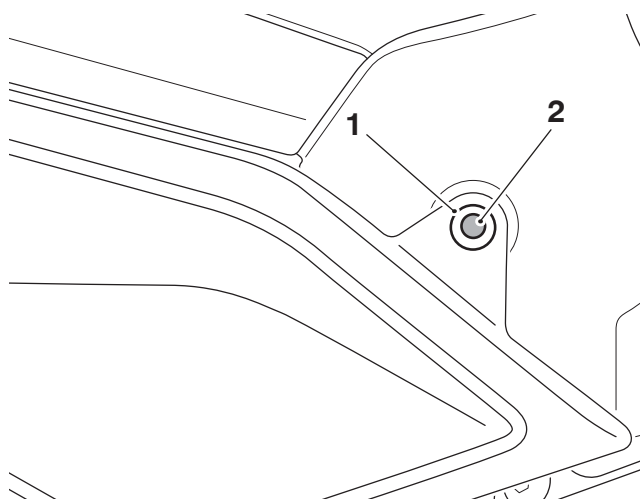
Tiger Sport from VIN AU7774

1. Position the motorcycle on a paddock stand.
2. Remove the seat, as described in the Service Manual.
3. Disconnect the battery, as described in the Service Manual.

NOTICE

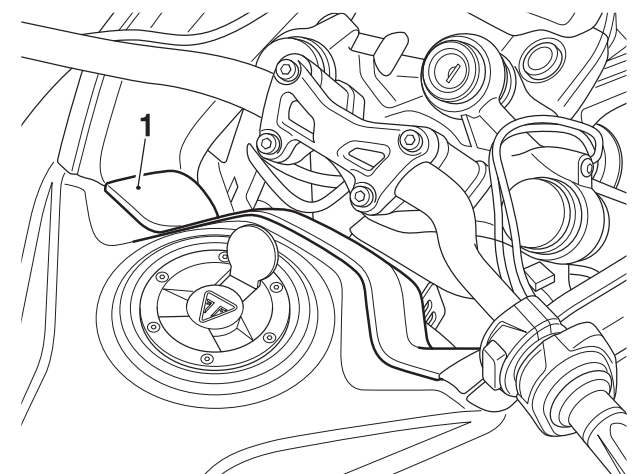
Plastic scrivets are used throughout the motorcycle to retain infill panels, mouldings and body panels.

To release a scrivit carefully press the centre section of the scrivit head in.



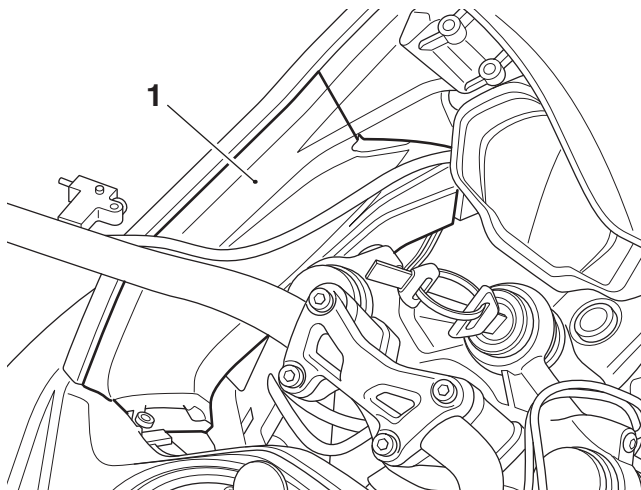
1. Scrivit head
2. Centre section

4. Remove the fuel tank centre infill panel, as described in the Service Manual.



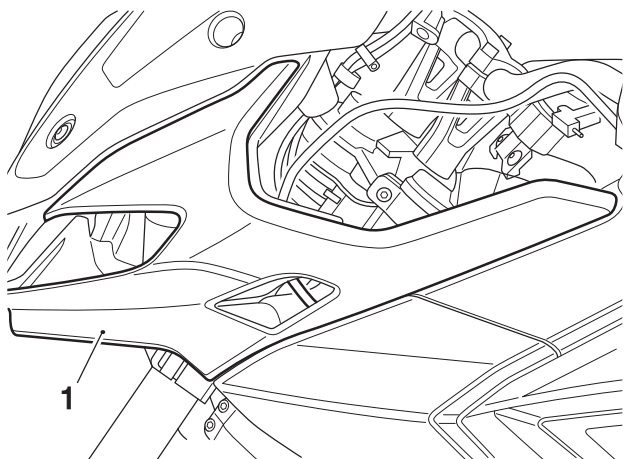
1. Fuel tank centre infill panel

5. Remove the left hand side cockpit infill panel, as described in the Service Manual.



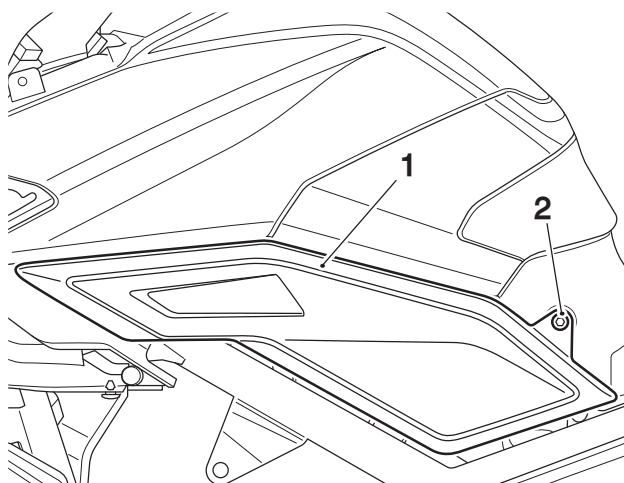
1. Cockpit infill panel, left hand side

6. Remove the left hand side cockpit body panel, as described in the Service Manual.



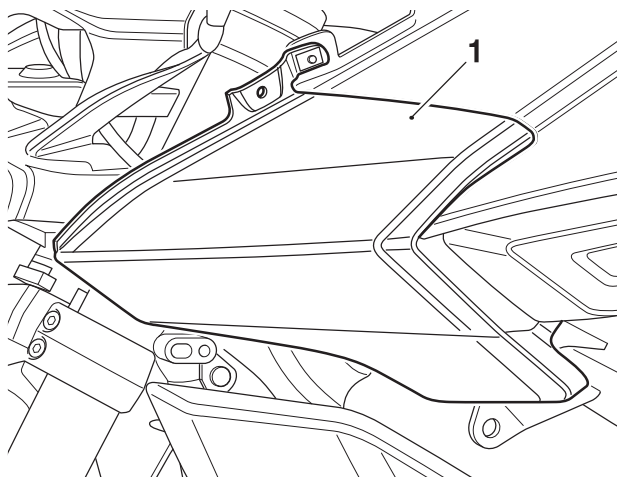
1. Cockpit body panel, left hand side

7. Remove the left hand side fuel tank side panel, as described in the Service Manual.



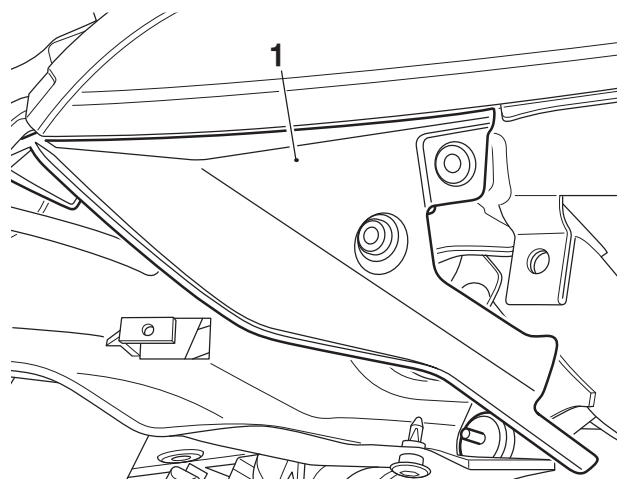
1. Fuel tank side panel, left hand side
2. Scrivit

8. Remove the left hand side upper fairing panel and fairing infill moulding assembly, as described in the Service Manual.



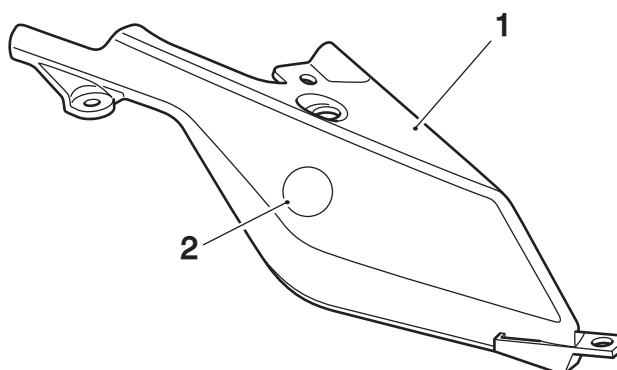
1. Upper fairing panel, left hand side

9. Remove the left hand side fairing infill moulding from the upper fairing panel, as described in the Service Manual.



1. Fairing infill moulding, left hand side

10. Locate the cut out marking on the inner face of the fairing infill moulding.



1. Fairing infill moulding
2. Cut out marking

NOTICE

Care must be taken when cutting the 18 mm hole in the fairing infill moulding.

Make sure the fairing infill moulding is supported correctly if using power tools to drill the hole.

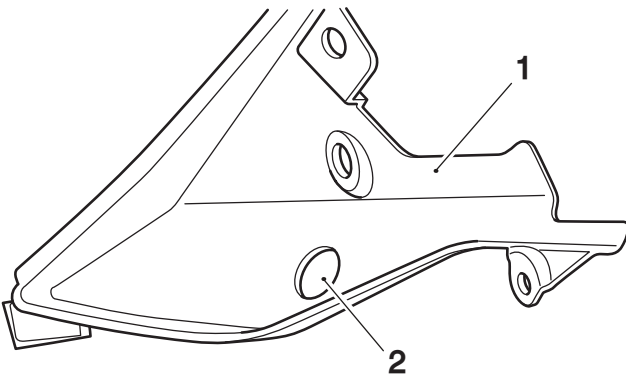
Improper handling, or the use of unsuitable tools could result in damage to the fairing infill moulding.

NOTICE

The recommended method to cut the 18 mm hole in the fairing infill moulding is to use a suitable hole cutter.

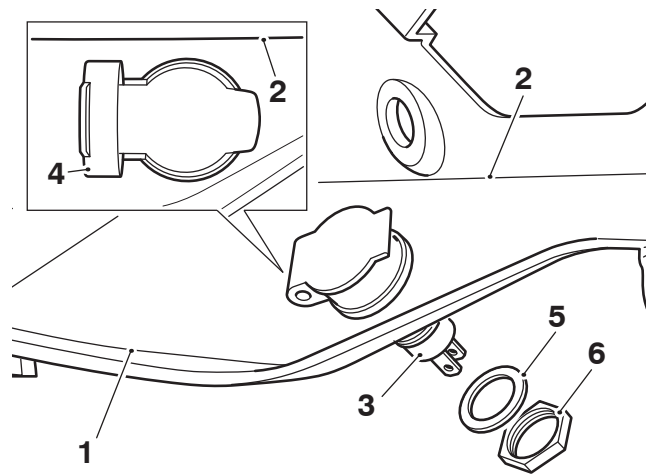
If using power tools to drill the 18 mm hole make sure the fairing infill moulding is correctly supported.

11. Carefully cut an 18 mm hole in the fairing infill moulding at the marked position.



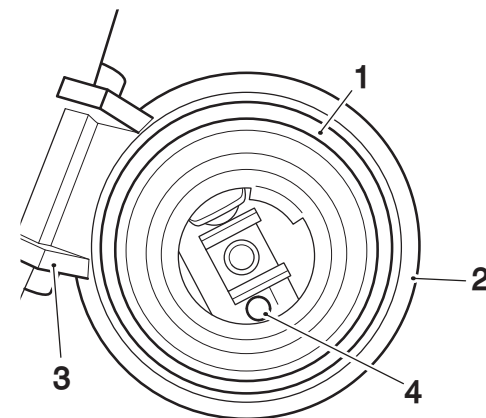
1. Fairing infill panel
2. 18 mm hole

12. Fit the auxiliary power socket in to the fairing infill moulding with the hinge section of the lid perpendicular to the crease line in the infill moulding, as shown. Fit the washer and nut, do not fully tighten the nut at this stage.



1. Fairing infill moulding
2. Crease line
3. Auxiliary power socket
4. Auxiliary power socket hinge
5. Washer
6. Nut

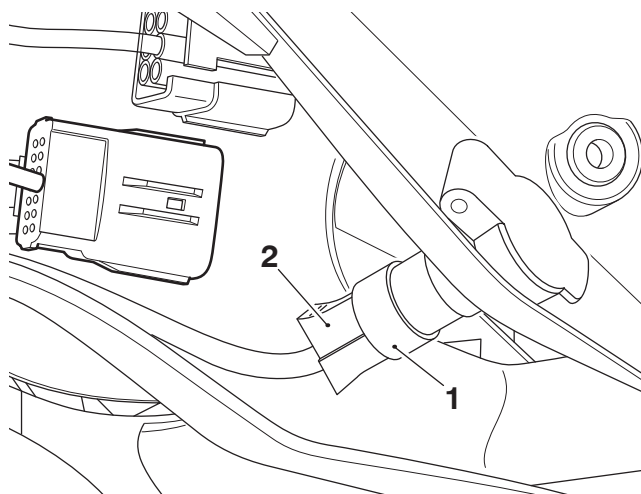
13. With the auxiliary socket lid in the correct orientation, rotate the auxiliary socket body if necessary to make sure the drain hole in the body is positioned, as shown below. Tighten the retaining nut to **2 Nm**.



1. Auxiliary socket body
2. Auxiliary socket cover
3. Cover hinge
4. Drain hole

14. Refit the left hand side fairing infill moulding to the upper fairing panel, as described in the Service Manual using the original self-tapping fixings. Tighten the self-tapping fixings to **1 Nm**.

15. Locate the two-pin electrical connector marked with blue tape in the main wiring harness. The connector is situated in the area which was covered by the left hand fairing infill moulding. Connect the main wiring harness connector to the auxiliary power socket.



1. Auxiliary power socket
2. Main wiring harness connector

NOTICE

When refitting the left hand side upper fairing and infill moulding assembly, route cables to follow the main wiring harness and make sure no cables can be trapped by the infill panel.

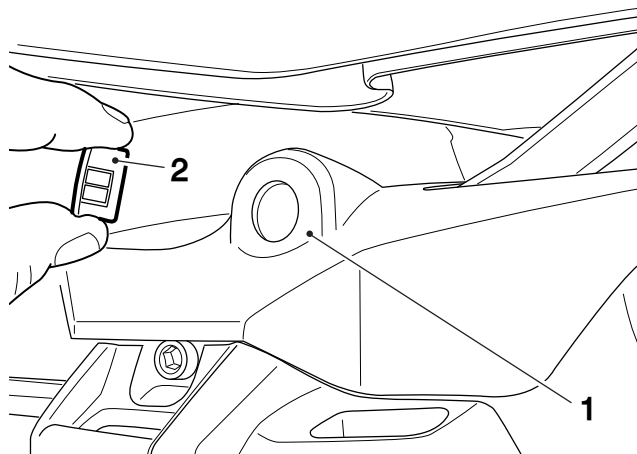
This may result in short circuits, a burnt out wiring harness and the possibility of fire.

16. Refit the left hand side upper fairing panel and infill moulding assembly as described in the Service Manual.
17. Refit the left hand side fuel tank side panel as described in the Service Manual.
18. Refit the left hand side cockpit body panel as described in the Service Manual.
19. Refit the left hand side cockpit infill panel as described in the Service Manual.
20. Refit the fuel tank centre infill panel as described in the Service Manual.
21. Reconnect the battery as described in the Service Manual.
22. Refit the seat as described in the Service Manual.
23. Remove the paddock stand and place the motorcycle on its side stand.

Tiger Explorer, Tiger Explorer XC, Explorer XR, Explorer XC, Tiger 1200 XR

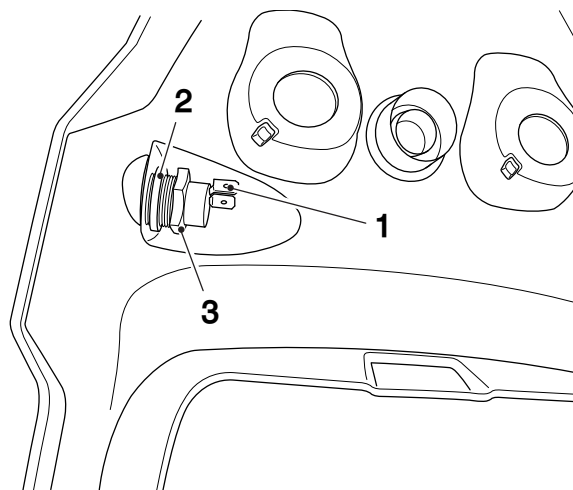
1. Position the motorcycle on a paddock stand.
2. Remove the rider's seat as described in the Owner's Handbook.

3. Disconnect the battery, as described in the Service Manual.
4. Remove the blanking plug from the opening in the left hand side of the battery tray. Retain the blanking plug if the motorcycle is to be returned to its original condition.



1. Rear bodywork
2. Blanking plug

5. Remove the rear bodywork as described in the Service Manual.
6. Install the auxiliary power socket to the rear bodywork and rotate the socket until the cover hinge is facing to the front. Make sure the drain hole is closest to the ground. Fit the washer and nut, tightening to **2 Nm**.



1. Auxiliary power socket
2. Washer
3. Nut

7. Locate the auxiliary power socket connector taped to the main harness in the battery tray adjacent to the power socket opening in the rear bodywork.
8. Connect the electrical connector to the power socket.
9. Refit the rear bodywork as described in the Service Manual.

10. Reconnect the battery, as described in the Service Manual.
11. Refit the rider's seat as described in the Owner's Handbook.
12. Remove the paddock stand and place the motorcycle on its side stand.

Trophy

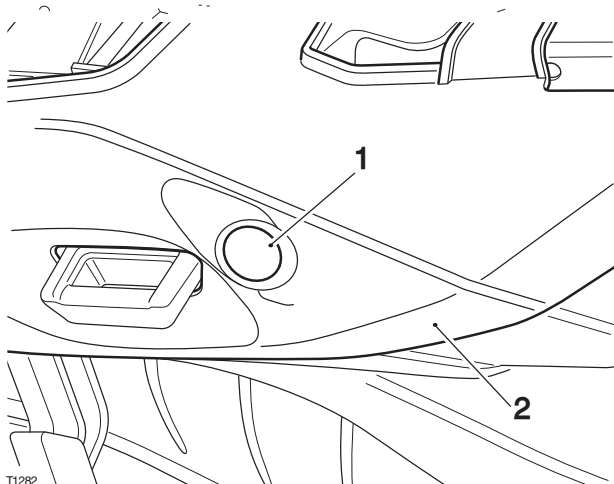
1. Position the motorcycle on a paddock stand.
2. Remove the luggage rack, as described in the Service Manual.
3. Disconnect the battery, as described in the Service Manual.
4. Remove the left hand rear panel, as described in the Service Manual

NOTICE

Do not use any form of sharp implement to remove the blanking plug from the rear panel.

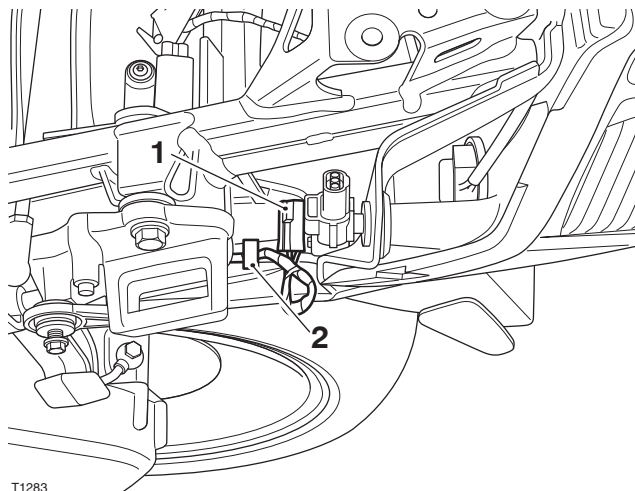
Always push the blanking plug out from the rear of the panel.

5. Remove the blanking plug from the rear panel. Retain the blanking plug if the motorcycle is to be returned to its original condition.



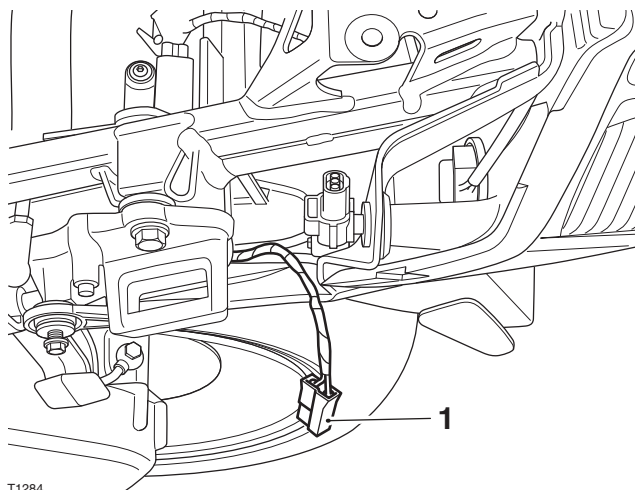
1. Blanking plug
2. Rear panel

6. Locate the auxiliary power socket connector on the main harness. A green tab on the connector wiring is provided to aid identification.



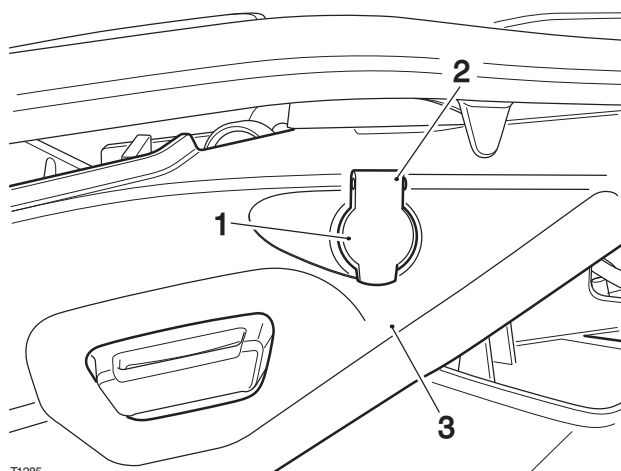
1. Auxiliary power socket connector
2. Green identification tab

7. Remove the identification tab, this will release the auxiliary power socket connector from the main wiring harness.



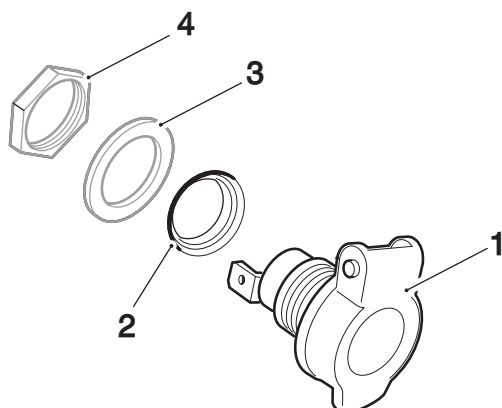
1. Auxiliary power socket connector

8. Fit the auxiliary power socket to the rear panel in the orientation shown below. Make sure the drain hole is closest to the ground.



1. Auxiliary power socket
2. Cover hinge
3. Rear panel

9. Secure the auxiliary power socket to the rear panel with the washer and nut. Tighten the nut to **2 Nm**.



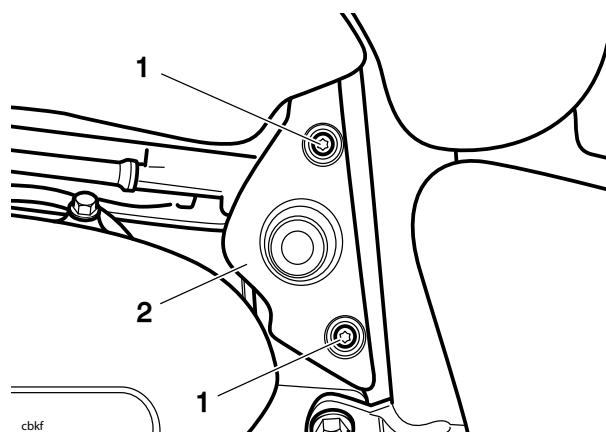
1. Fuel tank side panel, left hand side
2. Scrivit

10. Connect the electrical connector to the auxiliary power socket.
11. Refit the left hand rear panel, as described in the Service Manual.
12. Refit the luggage rack, as described in the Service Manual.
13. Reconnect the battery, positive (red) lead first, as described in the Service Manual.

14. Remove the paddock stand and place the motorcycle on its side stand.

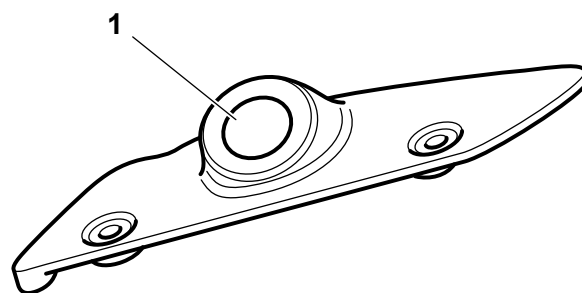
Rocket III, Rocket III Classic and Rocket III Touring

1. Position the motorcycle on a paddock stand.
2. Remove the rider's seat as described in the Service Manual.
3. Disconnect the battery, as described in the Service Manual.
4. Remove the fixings securing the left hand frame infill panel to the motorcycle and remove the infill panel from the motorcycle, as shown below.



1. Fixing
2. Infill panel

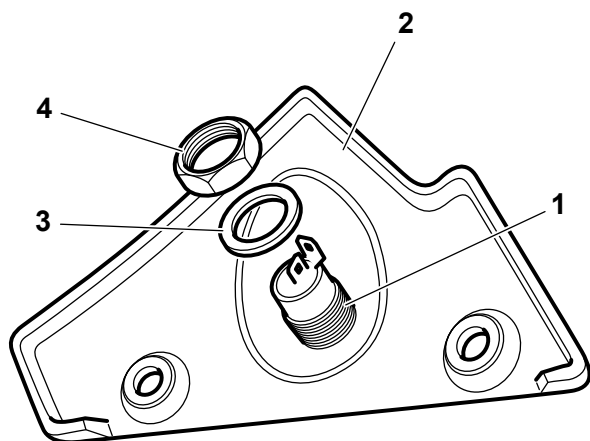
5. Push the blanking plug out of the infill panel. Retain the blanking plug for reuse should the motorcycle be returned to its original condition.



cbkg

1. Blanking plug

- Fit the auxiliary power socket to the infill panel as shown below. Make sure the drain hole is closest to the ground. Tighten the nut to **2 Nm**.



cbkh

- Auxiliary power socket
- Infill panel
- Washer
- Nut

- Locate the two-pin electrical connector marked with blue tape in the main wiring harness. The connector is situated in the area which was covered by the left hand frame infill panel. Fit the connector to the back of the auxiliary power socket.
- Refit the left hand frame infill panel to the motorcycle. Tighten the two fixings to 4 Nm.

NOTICE

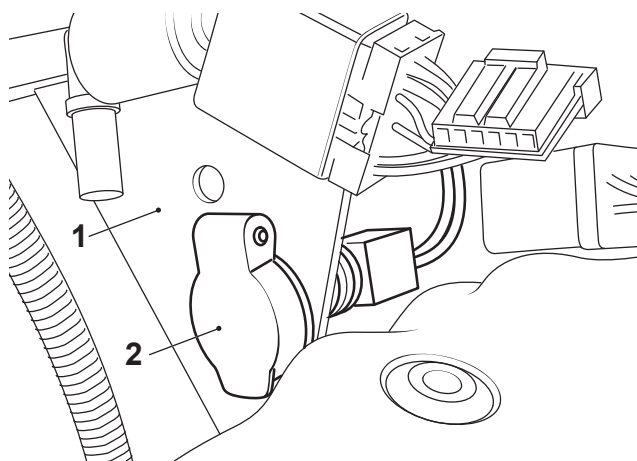
When refitting the left hand frame infill panel, route cables to follow the main wiring harness and make sure no cables can be trapped by the infill panel. Failure to observe this caution may result in short circuits, a burnt out wiring harness and the possibility of fire.

- Reconnect the battery as described in the Service Manual.
- Refit the seat as described in the Service Manual.
- Remove the paddock stand and place the motorcycle on its side stand.

America

- Position the motorcycle on a paddock stand.
- Remove the seats as described in the Service Manual.
- Disconnect the battery as described in the Service Manual.

- Remove the fuel tank as described in the Service Manual.
- Locate the power socket mounting bracket to the rear of the camshaft cover and on the right hand side of the motorcycle.
- Fit the auxiliary power socket to the bracket using the nut provided. Make sure the drain hole is closest to the ground and tighten the nut to **5 Nm**.
- Locate the harness connector on the left hand side of the motorcycle taped to the harness with blue tape and push onto the terminals at the rear of the auxiliary power socket.



casx_1

- Bracket
- Auxiliary power socket

- Refit the fuel tank as described in the Service Manual.
- Reconnect the battery, positive (red) lead first as described in the Service Manual.
- Refit the seats as described in the Service Manual.
- Remove the paddock stand and place the motorcycle on its side stand.

⚠ WARNING

After fitting the accessory kit the motorcycle will exhibit new handling characteristics.

Operate the motorcycle in a safe area free from traffic to gain familiarity with any new characteristics.

Operation of the motorcycle when not familiar with any new handling characteristics may lead to loss of motorcycle control which could result in serious injury or death.

⚠ WARNING

If, after fitting this accessory kit, you have any doubt about the performance of any aspect of the motorcycle, contact a competent person with the specialist knowledge and technical understanding of motorcycles, such as an authorised Triumph dealer.

Riding a motorcycle when there is any doubt as to any aspect of the performance of the motorcycle may lead to loss of motorcycle control which could result in serious injury or death.

⚠ WARNING

Never ride an accessory-equipped motorcycle at speeds above 80 mph (130 km/h).

Remember that the 80 mph (130 km/h) limit will be reduced by the fitting of non-approved accessories, incorrect loading, worn tyres, overall motorcycle condition and poor road or weather conditions.

The presence of accessories will cause changes in the stability and handling of the motorcycle. Failure to allow for changes in motorcycle stability may lead to loss of motorcycle control which could result in serious injury or death.

⚠ WARNING

High-speed operation should only be attempted by riders who have been instructed in the techniques necessary for high-speed riding and are familiar with the motorcycle's characteristics in all conditions.

Only operate this Triumph motorcycle at high speed in closed-course, on-road competition or on closed-course racetracks.

High-speed operation in any other circumstances is dangerous and may lead to loss of motorcycle control which could result in serious injury or death.

NOTICE

The motorcycle must not be operated above the legal road speed limit except in closed-course conditions.