

Accessory Fitting Instructions

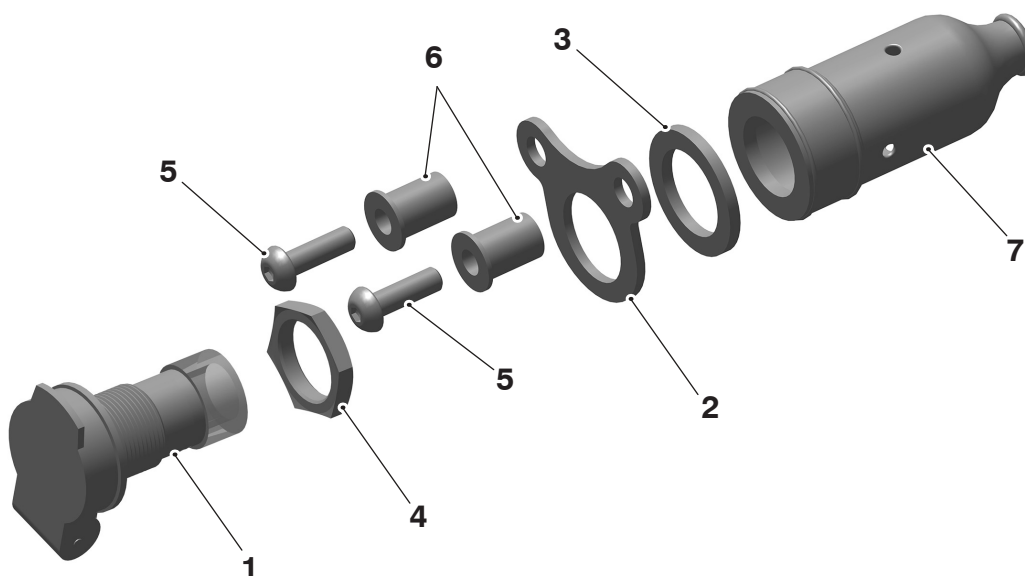
Thank you for choosing this Triumph genuine accessory kit. This accessory kit is the product of Triumph's use of proven engineering, exhaustive testing, and continuous striving for superior reliability, safety and performance.

Completely read all of these instructions before commencing the installation of the accessory kit in order to become thoroughly familiar with the kit's features and the installation process.

These instructions should be considered a permanent part of your accessory kit, and should remain with it even if your accessory equipped motorcycle is subsequently sold.

Auxiliary Power Socket Kit	
Kit Number	Models
A9820089	Rocket 3 R, Rocket 3 R Black, Rocket 3 R Storm, Rocket 3 TFC, Rocket 3 GT, Rocket 3 GT Triple Black, Rocket 3 GT Storm

Parts supplied



1. Socket, auxiliary power	1 off	5. Fixing, M5 x 16 mm	2 off
2. Mounting bracket	1 off	6. Well nut, M5	2 off
3. Plastic washer, M18	1 off	7. Rubber cover	1 off
4. Nut, auxiliary power socket	1 off		

⚠ WARNING

Fit only genuine Triumph accessories to those models approved by Triumph as listed in the associated Triumph fitting instructions.

The accessory kits covered in this instruction are designed for use on specific models of Triumph motorcycle. The accessory kits and the models applicable are listed at the start of the instruction. They should never be fitted to any other Triumph model or to any other manufacturer's motorcycle.

Fitting an accessory kit to a Triumph model not listed, or to any other manufacturer's motorcycle, will affect the performance, stability and handling of the motorcycle.

Failure to follow the advice above may lead to loss of motorcycle control which could result in serious injury or death.

⚠ WARNING

Always have Triumph approved parts, accessories and conversions fitted by a competent person with the specialist knowledge and technical understanding of motorcycles, such as an authorised Triumph dealer.

The fitment of parts, accessories and conversions by a person without the specialist knowledge and technical understanding of motorcycles may affect the handling, stability or other aspects of the motorcycle's operation.

Failure to follow the advice above may lead to loss of motorcycle control which could result in serious injury or death.

⚠ WARNING

A torque wrench of known accurate calibration must be used when fitting this accessory kit.

Failure to tighten any of the fasteners to the correct torque specification may affect motorcycle performance, handling and stability.

Failure to follow the advice above may lead to loss of motorcycle control which could result in serious injury or death.

⚠ WARNING

Make sure the motorcycle is stabilised and adequately supported.

Do not support the motorcycle on any ancillary component, the exhaust system or any other non structural parts of the motorcycle frame.

A correctly supported motorcycle will help prevent it from falling.

An unstable motorcycle may fall resulting in motorcycle damage, serious injury or death.

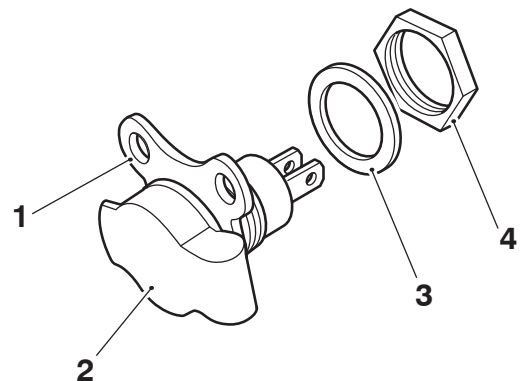
NOTICE

Triumph offers a broad range of approved genuine accessories for your motorcycle.

We cannot therefore cover all possible equipment variations in these instructions. For removal and installation of Triumph Genuine Accessories, always refer to the instructions supplied with the respective accessory kit.

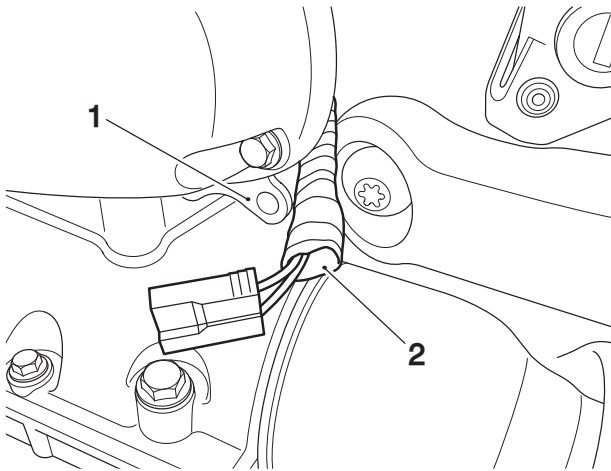
To obtain additional copies of any Triumph accessory instructions, visit www.triumphinstructions.com or contact your authorised Triumph dealer.

1. Remove the seat, as described in the Service Manual.
2. Disconnect the battery, negative (black) lead first.
3. Collect the auxiliary power socket from the kit and remove the large nut from the socket. Retain the nut for reuse.
4. Fit the auxiliary power socket into the mounting bracket in the orientation shown. Make sure the drain hole is located at the bottom of the bracket.



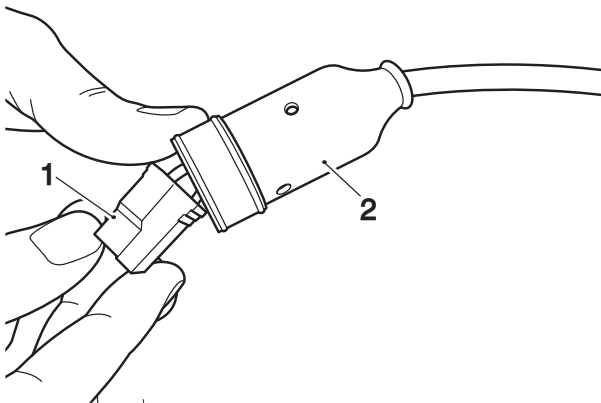
1. **Mounting bracket**
2. **Auxiliary power socket**
3. **Plastic washer, M18**
4. **Auxiliary power socket nut**
5. Fit the plastic washer from the kit and secure with the large auxiliary power socket nut. Tighten the nut to **2 Nm**.

6. Locate the auxiliary power socket wiring harness connector which is taped to the main wiring harness under the airbox on the left hand side of the motorcycle. Pull the auxiliary power socket harness and connector out from below the airbox.



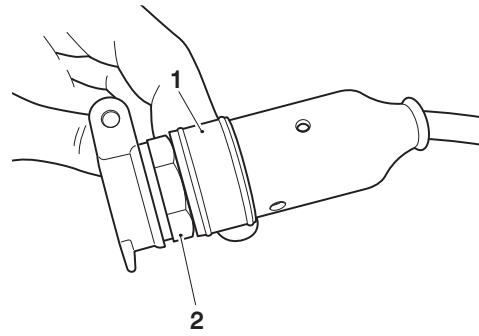
1. Airbox
2. Auxiliary power socket harness

7. Feed the auxiliary power socket wiring connector through the rubber cover from the kit, as shown.



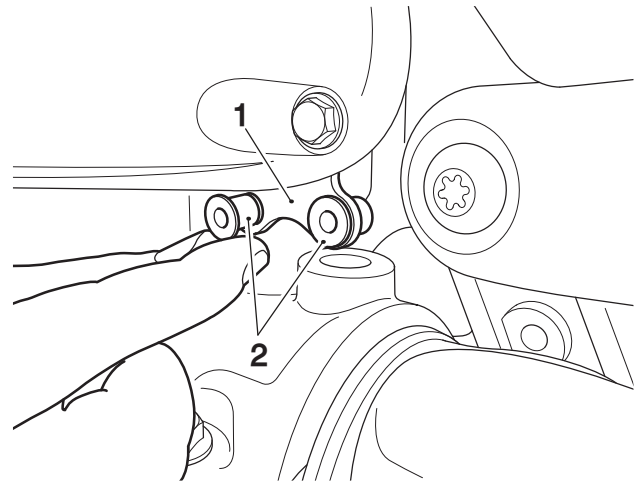
1. Auxiliary power socket connector
2. Rubber cover

8. Connect the auxiliary power socket wiring connector to the auxiliary power socket.



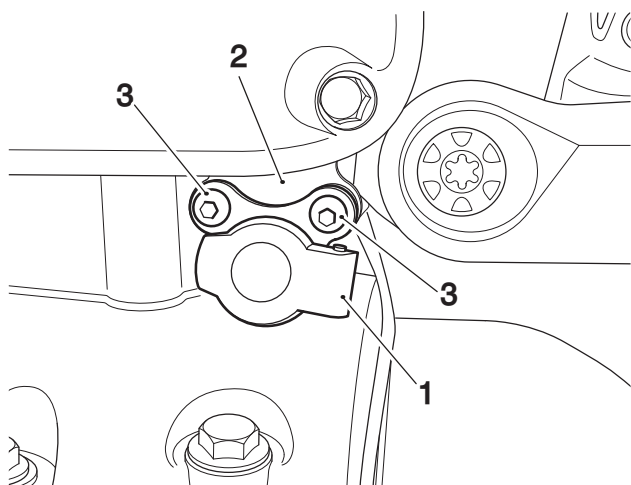
1. Rubber cover
2. Auxiliary power socket

9. Fit the M5 well nuts from the kit into the airbox bracket on the left hand side of the motorcycle, as shown.



1. Airbox bracket
2. Well nuts, M5

- Fit the auxiliary power socket and mounting bracket assembly onto the airbox bracket, as shown below. Fit the two M5 x 16 mm fixings from the kit. Tighten the fixings to **1 Nm**.



- Auxiliary power socket and bracket assembly**
- Airbox**
- Fixings, M5 x 16 mm**

- Ensure the auxiliary power socket wiring harness is positioned such that it will not chafe any adjacent pipes or hoses.
- Reconnect the battery, positive (red) lead first and tighten the battery terminals to **4.5 Nm**.
- Refit the seat as described in the Service Manual.

Auxiliary Power Socket

Primary fuse box, fuse number 6 (20 Amps) labelled ACC protects the auxiliary power sockets, USB charger and heated grips on the motorcycle. The recommended maximum current that should be drawn through the auxiliary socket is 20 Amps @ 12 Volts.

⚠ WARNING

When connecting any electrical device to the auxiliary power socket ensure the wiring of the device is routed correctly and cannot contact any hot surfaces of the motorcycle or interfere with any of the motorcycle controls.

Contact with a hot surface may result in wiring harness damage and electrical malfunctions.

Any interference with the motorcycle controls may lead to loss of motorcycle control which could result in serious injury or death.

⚠ CAUTION

The auxiliary power socket is protected by a fuse. Refer to the Service Manual for the fuse location.

Items with a current draw greater than the limit of the fuse must not be plugged in to the auxiliary power socket. Refer to the label in the fuse box lid for fuse amperage.

NOTICE

The auxiliary power socket provides a continuous 12 Volt power supply regardless of the ignition being switched on or off.

Use of the auxiliary socket with the ignition switched off will drain the motorcycle battery.

⚠ WARNING

After fitting the accessory kit the motorcycle will exhibit new handling characteristics.

Operate the motorcycle in a safe area free from traffic to gain familiarity with any new characteristics.

Operation of the motorcycle when not familiar with any new handling characteristics may lead to loss of motorcycle control which could result in serious injury or death.

⚠ WARNING

If, after fitting this accessory kit, you have any doubt about the performance of any aspect of the motorcycle, contact a competent person with the specialist knowledge and technical understanding of motorcycles, such as an authorised Triumph dealer.

Riding a motorcycle when there is any doubt as to any aspect of the performance of the motorcycle may lead to loss of motorcycle control which could result in serious injury or death.

⚠ WARNING

Never ride an accessory-equipped motorcycle at speeds above 80 mph (130 km/h).

Remember that the 80 mph (130 km/h) limit will be reduced by the fitting of non-approved accessories, incorrect loading, worn tyres, overall motorcycle condition and poor road or weather conditions.

The presence of accessories will cause changes in the stability and handling of the motorcycle. Failure to allow for changes in motorcycle stability may lead to loss of motorcycle control which could result in serious injury or death.

⚠ WARNING

High-speed operation should only be attempted by riders who have been instructed in the techniques necessary for high-speed riding and are familiar with the motorcycle's characteristics in all conditions.

Only operate this Triumph motorcycle at high speed in closed-course, on-road competition or on closed-course racetracks.

⚠ WARNING Continued

High-speed operation in any other circumstances is dangerous and may lead to loss of motorcycle control which could result in serious injury or death.

NOTICE

The motorcycle must not be operated above the legal road speed limit except in closed-course conditions.