

Accessory Fitting Instructions

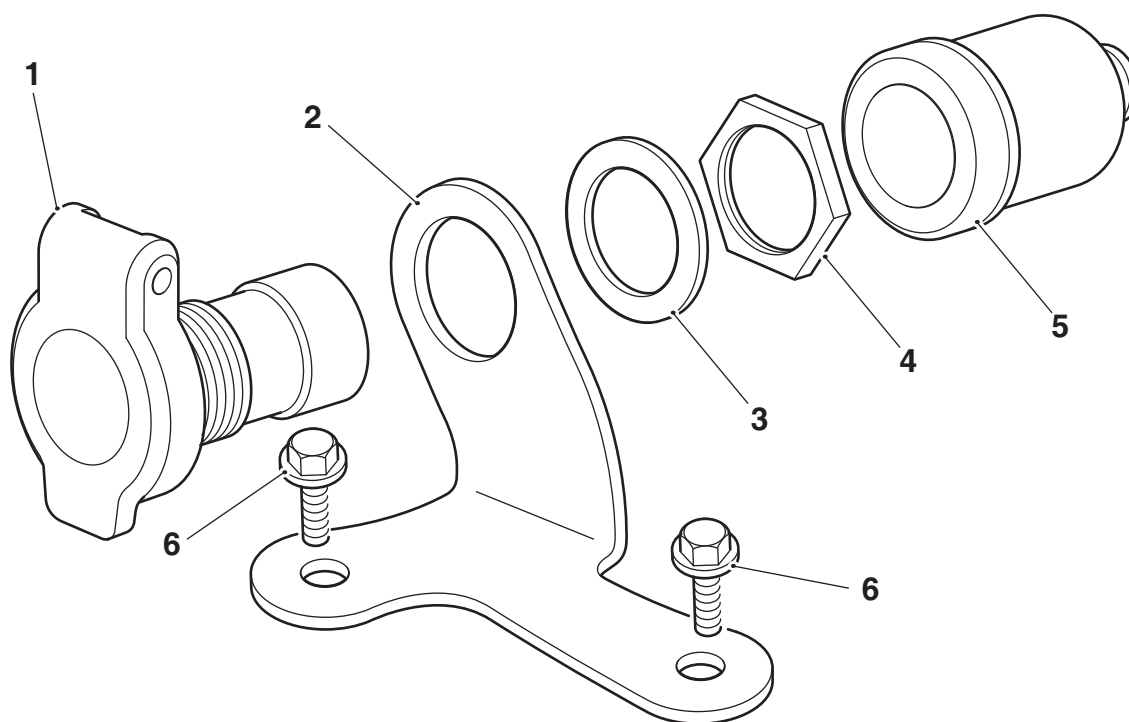
Auxiliary Power Socket Kit	
Kit number	Models Affected
A9820031	Bonneville Bobber, Bonneville Bobber Black, Bonneville Bobber TFC, Bonneville Speedmaster from VIN 739143

Thank you for choosing this Triumph genuine accessory kit. This accessory kit is the product of Triumph's use of proven engineering, exhaustive testing, and continuous striving for superior reliability, safety and performance.

Completely read all of these instructions before commencing the installation of the accessory kit in order to become thoroughly familiar with the kit's features and the installation process.

These instructions should be considered a permanent part of your accessory kit, and should remain with it even if your accessory equipped motorcycle is subsequently sold.

Parts supplied



1. Socket, auxiliary power	1 off	4. Nut (auxiliary socket)	1 off
2. Mounting bracket	1 off	5. Rubber cover	1 off
3. Plastic washer, M18	1 off	6. Fixing, M6 x 20 mm	2 off

Warning

The accessory kits covered in this instruction are designed for use on specific models of Triumph motorcycle. The accessory kits and the models applicable are listed at the start of the instruction. They should not be fitted to any other Triumph model or to any other manufacturer's motorcycle. Fitting an accessory kit to a Triumph model not listed, or to any other manufacturer's motorcycle, will affect the performance, stability and handling of the motorcycle. This may affect the rider's ability to control the motorcycle and may result in loss of motorcycle control and an accident.

Warning

Always have Triumph approved parts, accessories and conversions fitted by a trained technician of an authorised Triumph dealer. The fitment of parts, accessories and conversions by a technician who is not of an authorised Triumph dealer may affect the handling, stability or other aspects of the motorcycle's operation which may result in loss of motorcycle control and an accident.

Warning

Throughout this operation, ensure that the motorcycle is stabilised and adequately supported to prevent risk of injury from the motorcycle falling.

Warning

A torque wrench of known accurate calibration must be used when fitting this accessory kit. Failure to tighten any of the fasteners to the correct torque specification may affect motorcycle performance, handling and stability. This may result in loss of motorcycle control and an accident.

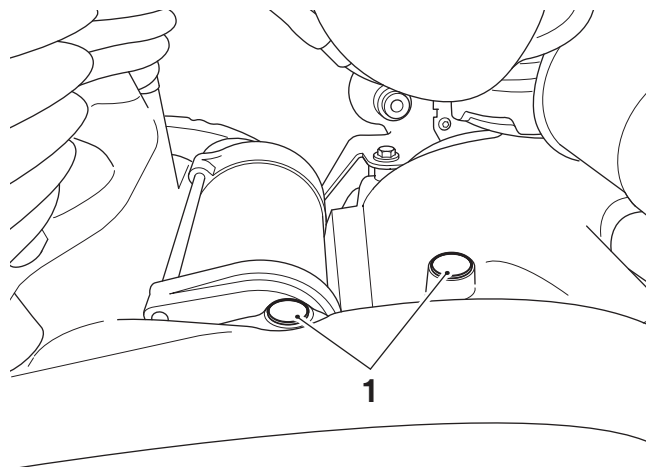
Warning

If the engine has recently been running, the exhaust system will be hot. Before working on or near the exhaust system, allow sufficient time for the system to cool, as touching any part of a hot exhaust could cause burn injuries.

Note:

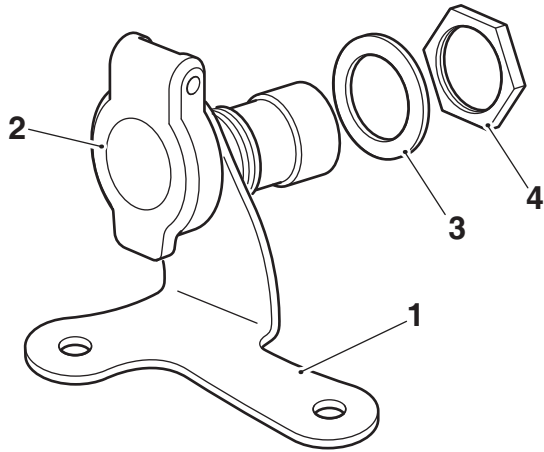
- Triumph offers a broad range of approved genuine accessories for your motorcycle. We cannot therefore cover all possible equipment variations in these instructions. For removal and installation of Triumph Genuine Accessories, always refer to the instructions supplied with the respective accessory kit. To obtain additional copies of any Triumph accessory instructions, visit www.triumphinstructions.com or contact your authorised Triumph dealer.

1. Disconnect the battery, negative (black) lead first.
2. Remove the fuel tank rear fixings, as described in the Service Manual. Retain the fixings for reuse.
3. Collect the auxiliary power socket from the kit and remove the large nut from the socket. Retain the nut for reuse.
4. Remove the two fir tree plugs from the crankcase on the left hand side of the motorcycle, as shown. Retain the fir tree plugs for reuse if the motorcycle is to be returned to its original condition.



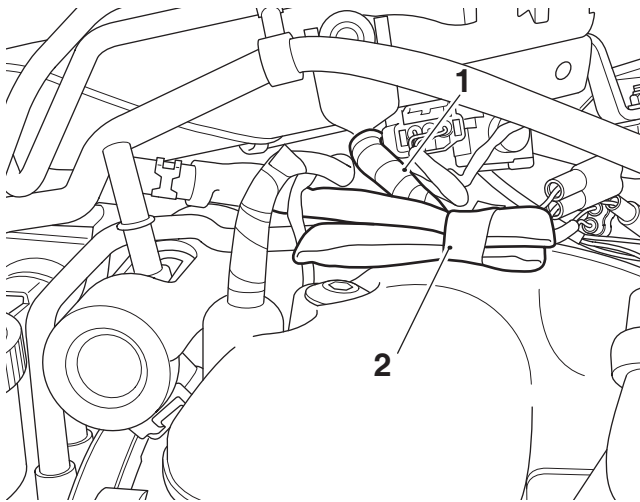
1. Fir tree plug

- Fit the auxiliary power socket into the mounting bracket in the orientation shown. Fit the plastic washer from the kit on to the auxiliary socket at the rear of the bracket and secure with the large auxiliary power socket nut. Tighten the nut to **2 Nm**.



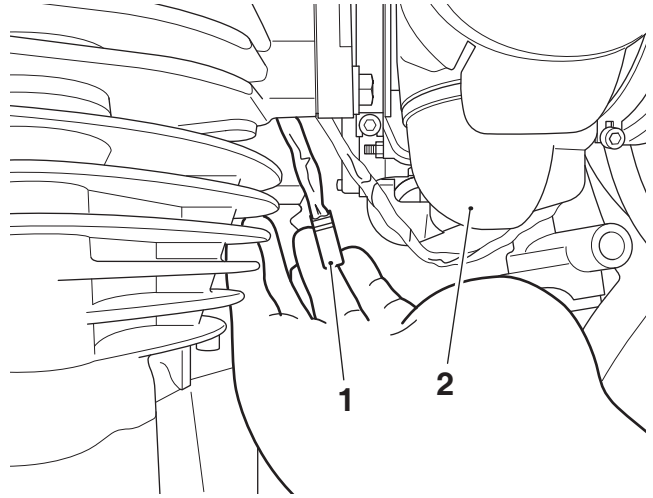
- Mounting bracket
- Auxiliary power socket
- Plastic washer
- Nut, auxiliary power socket

- Raise the rear of the fuel tank and locate the auxiliary power socket harness connector which is taped to the main wiring harness in the area under the fuel tank on the right hand side of the motorcycle.



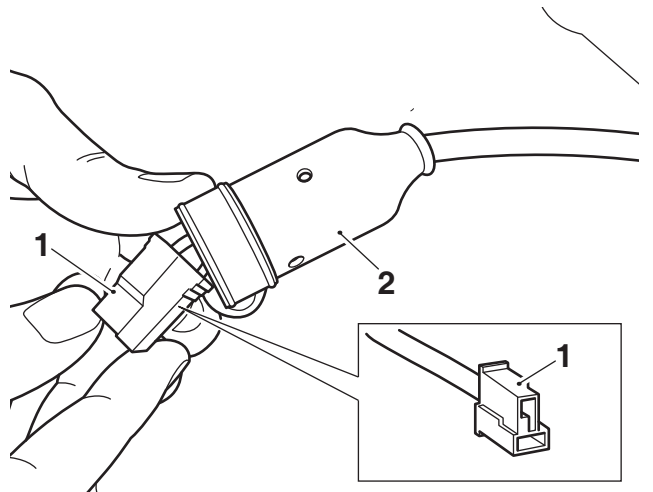
- Main wiring harness
- Auxiliary power socket harness connector

- Remove the tape securing the auxiliary power socket harness connector to the main wiring harness and route the auxiliary power socket harness between the throttle bodies and the cylinder barrels at the centre of the motorcycle, as shown.



- Auxiliary power socket harness
- Throttle bodies

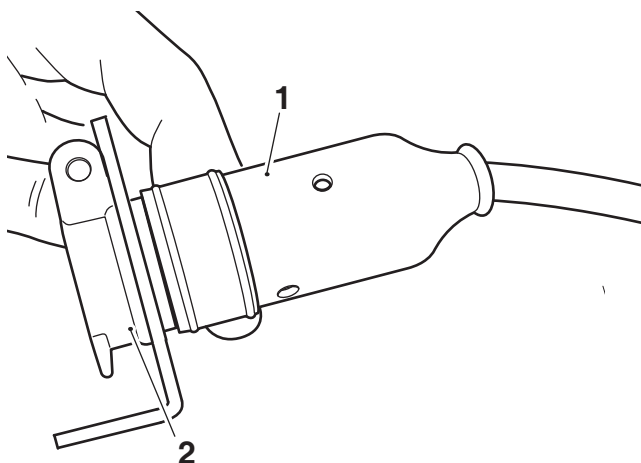
- Remove the protective film from the auxiliary power socket wiring connector and feed the connector through the rubber cover from the kit, as shown.



- Auxiliary power socket connector
- Rubber cover

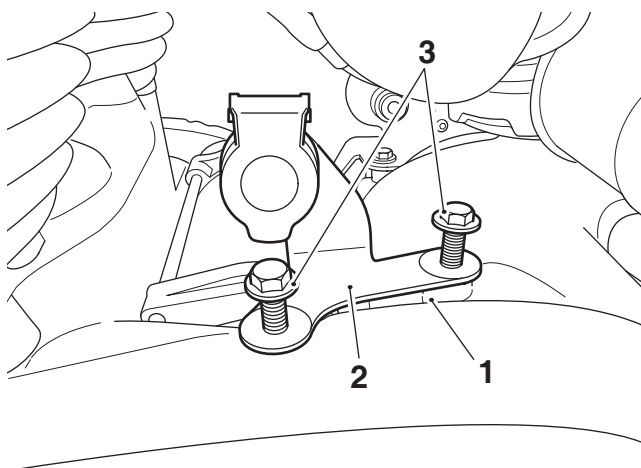
- Connect the auxiliary power socket connector to the auxiliary power socket.

10. Slide the rubber cover over the rear of the auxiliary power socket, as shown below.



1. Rubber cover
2. Auxiliary power socket

11. Position the mounting bracket and auxiliary power socket assembly onto the crankcase, as shown. Align the mounting bracket with the fixing positions in the crankcase and fit the M6 x 20 mm fixings from the kit. Tighten the fixings to **7 Nm**.



1. Crankcase
2. Auxiliary power socket and bracket
3. Fixing, M6 x 20 mm

12. Refit the fuel tank rear fixings, as described in the Service Manual.
13. Reconnect the battery, positive (red) lead first and tighten the battery terminals to **4.5 Nm**.

Power Supply

Note:

- The auxiliary power socket provides a continuous 12 Volt power supply regardless of the ignition being switched on or off. Use of the auxiliary socket with the ignition switched off will drain the motorcycle battery.

The auxiliary power socket will provide a 12 Volt electrical supply.

The auxiliary power socket is protected by a 5 Amp fuse, therefore items with a current draw greater than 5 Amps (60 Watts) must not be plugged in to the auxiliary power socket.

Refer to the Service Manual for the fuse location.



Warning

When connecting any electrical device to the auxiliary power socket ensure the wiring of the device is routed correctly and cannot contact any hot surfaces of the motorcycle or interfere with any of the motorcycle controls. Contact with a hot surface may result in wiring harness damage and electrical malfunctions. Any interference with the motorcycle controls may result in loss of motorcycle control and an accident.



Warning

If, after fitting this accessory kit, you have any doubt about the performance of any aspect of the motorcycle, contact an authorised Triumph dealer and do not ride the motorcycle until the authorised dealer has declared it fit for use. Riding a motorcycle when there is any doubt as to any aspect of the performance of the motorcycle may result in loss of motorcycle control and an accident.



Warning

Never ride an accessory-equipped motorcycle at speeds above 80 mph (130 km/h).

The presence of accessories will cause changes in the stability and handling of the motorcycle. Failure to allow for changes in motorcycle stability may result in loss of motorcycle control and an accident.

Remember that the 80 mph (130 km/h) limit will be reduced by the fitting of non-approved accessories, incorrect loading, worn tyres, overall motorcycle condition and poor road or weather conditions.



Warning

Only operate this Triumph motorcycle at high speed in closed-course, on-road competition or on closed-course racetracks. High-speed operation should only be attempted by riders who have been instructed in the techniques necessary for high speed riding and are familiar with the motorcycle's characteristics in all conditions.

High-speed operation in any other circumstances is dangerous and may result in loss of motorcycle control and an accident.



Warning

The motorcycle must not be operated above the legal road speed limit except in closed-course conditions.