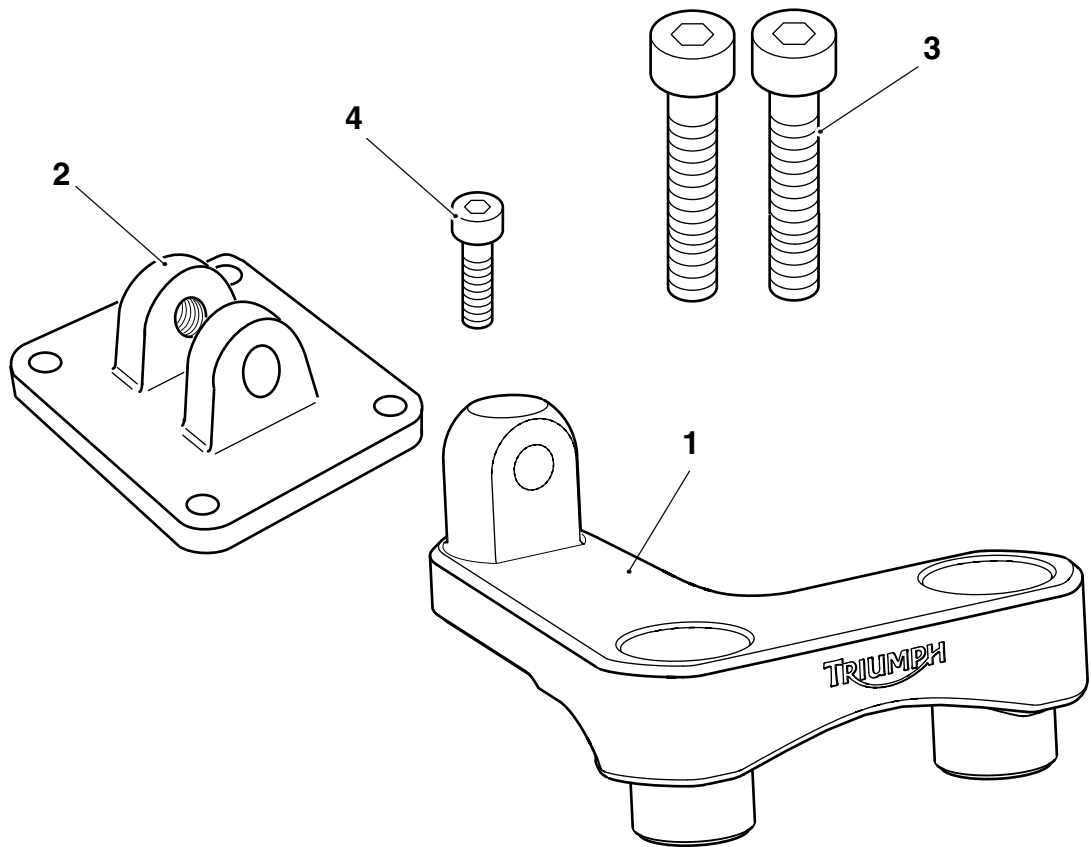


Fitting Instructions:
Street Triple Rx, Street Triple from VIN 560477 and
Street Triple R from VIN 560477
A9820012

Thank you for choosing this Triumph genuine accessory kit. This accessory kit is the product of Triumph's use of proven engineering, exhaustive testing, and continuous striving for superior reliability, safety and performance.

Completely read all of these instructions before commencing the installation of the accessory kit in order to become thoroughly familiar with the kit's features and the installation process.

These instructions should be considered a permanent part of your accessory kit, and should remain with it even if your accessory-equipped motorcycle is subsequently sold.



T1289

Parts Supplied:

1. GPS mount	1 off	3. Screw, M8 x 45 mm	2 off
2. GPS plate	1 off	4. Screw, M5 x 20 mm	1 off



Warning

This accessory kit is designed for use on Triumph Street Triple Rx, Street Triple from VIN 560477 and Street Triple R from VIN 560477 motorcycles only and should not be fitted to any other Triumph model or to any other manufacturer's motorcycle. Fitting this accessory kit to any other Triumph model or to any other manufacturer's motorcycle will affect the performance, stability and handling of the motorcycle. This may affect the rider's ability to control the motorcycle and could cause an accident.



Warning

Always have Triumph approved parts, accessories and conversions fitted by a trained technician of an authorised Triumph dealer. The fitment of parts, accessories and conversions by a technician who is not of an authorised Triumph dealer may affect the handling, stability or other aspects of the motorcycle's operation which may result in loss of motorcycle control and an accident.



Warning

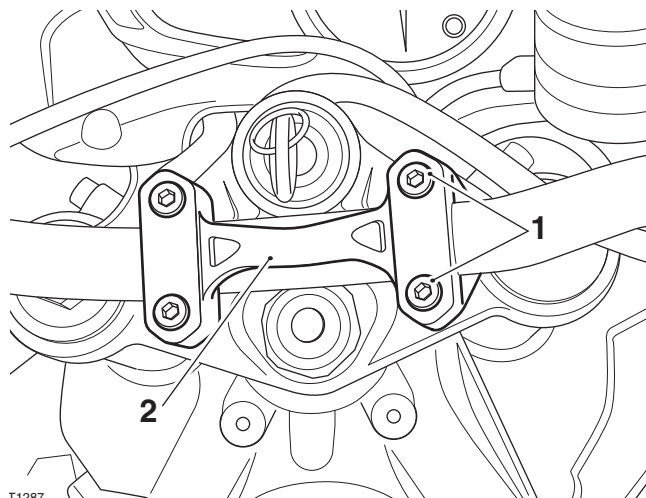
Throughout this operation, ensure that the motorcycle is stabilised and adequately supported to prevent risk of injury from the motorcycle falling.



Warning

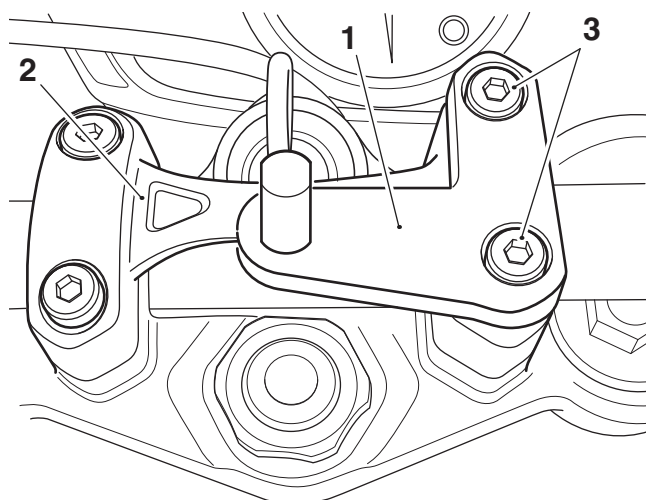
A torque wrench of known accurate calibration must be used when fitting this accessory kit. Failure to tighten any of the fasteners to the correct torque specification may result in loss of motorcycle control and an accident.

1. Remove the right-hand side handlebar clamp fixing bolts. Retain the fixing bolts for use if the motorcycle is returned to original condition.



1. Handlebar clamp fixing bolts, right-hand side
2. Handlebar clamp

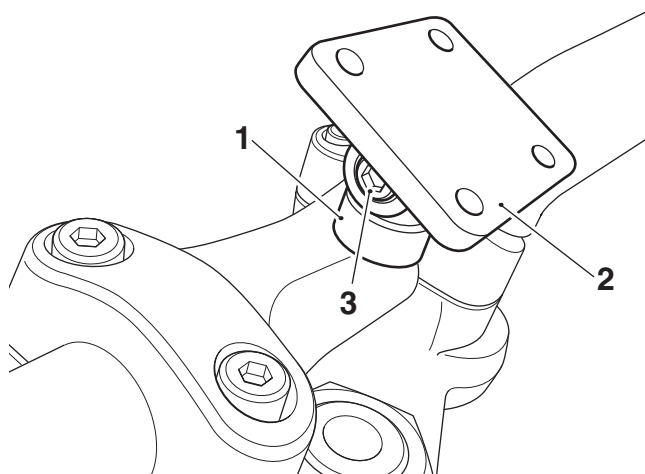
2. Position the GPS mount provided on to the handlebar clamp in the orientation shown below. Align the fixing holes in the GPS mount with the fixing holes in the handlebar clamp and fit the two M8 x 45 mm screws provided. Hand tighten the screws at this stage.



1. GPS mount
2. Handlebar clamp
3. Screw, M8 x 45 mm

3. Tighten the front M8 x 45 mm screw to **26 Nm**, then the rear to **26 Nm**.
4. Attach the GPS cradle, supplied with the GPS unit, to the GPS plate. Secure with the fixings provided with the GPS cradle and tighten the fixings to the torque recommended by the GPS cradle manufacturer.

5. Locate the GPS plate on to the GPS mount, in the orientation shown below. Align the fixing hole in the base of the plate with the GPS mount and fit the M5 x 20 mm screw provided. Adjust the position of the GPS plate to the desired angle and tighten the fixing screw to **4 Nm**.



1. GPS Mount
2. GPS Plate
3. Screw, M5 x 20 mm



Danger

Do not use a mobile phone while you ride. Do not text while you ride. Do not attempt to adjust any GPS device while you ride. Telephone calls, texting or any attempt to use your mobile device for any purpose will distract you. This will cause accidents that can seriously injury or kill riders, passengers, occupants in other vehicles and pedestrians.



Warning

Always ensure that the newly installed wiring does not chafe against other parts of the motorcycle such that it may be rubbed through and cause an electrical problem. In addition, always ensure that the newly installed wiring will not restrict steering movement. Both conditions are hazardous and could give rise to a dangerous riding condition resulting in a fire, loss of motorcycle control and an accident.



Warning

If an accessory tank bag is fitted, move the handlebar to the left and right full lock while checking that the GPS mount does not restrict the steering by contacting the tank bag.

Do not ride a motorcycle with restricted steering. Operation of the motorcycle with restricted steering may result in loss of motorcycle control and an accident.



Warning

After fitting the accessory kit the motorcycle will exhibit new handling characteristics. Operate the motorcycle in a safe area free from traffic to gain familiarity with any new characteristics. Operation of the motorcycle when not familiar with any new handling characteristics may result in loss of motorcycle control and an accident.



Warning

If, after fitment of this accessory kit, you have any doubt about the performance of any aspect of the motorcycle, contact an authorised Triumph dealer and do not ride the motorcycle until the authorised dealer has declared it fit for use. Riding a motorcycle when there is any doubt as to any aspect of the performance of the motorcycle may result in loss of control of the motorcycle leading to an accident.



Warning

Never ride an accessory-equipped motorcycle at speeds above 80 mph (130 km/h).

The presence of accessories will cause changes in the stability and handling of the motorcycle. Failure to allow for changes in motorcycle stability may lead to loss of control or an accident.

Remember that the 80 mph (130 km/h) limit will be reduced by the fitting of non-approved accessories, incorrect loading, worn tyres, overall motorcycle condition and poor road or weather conditions.



Warning

The motorcycle must not be operated above the legal road speed limit except in closed course conditions.



Warning

Only operate this Triumph motorcycle at high speed in closed course on road competition or on closed course race tracks. High speed operation should only be attempted by riders who have been instructed in the techniques necessary for high speed riding and are familiar with the motorcycle's characteristics in all conditions. High speed operation in any other circumstances is dangerous and will lead to loss of motorcycle control and an accident.