



Accessory Fitting Instructions

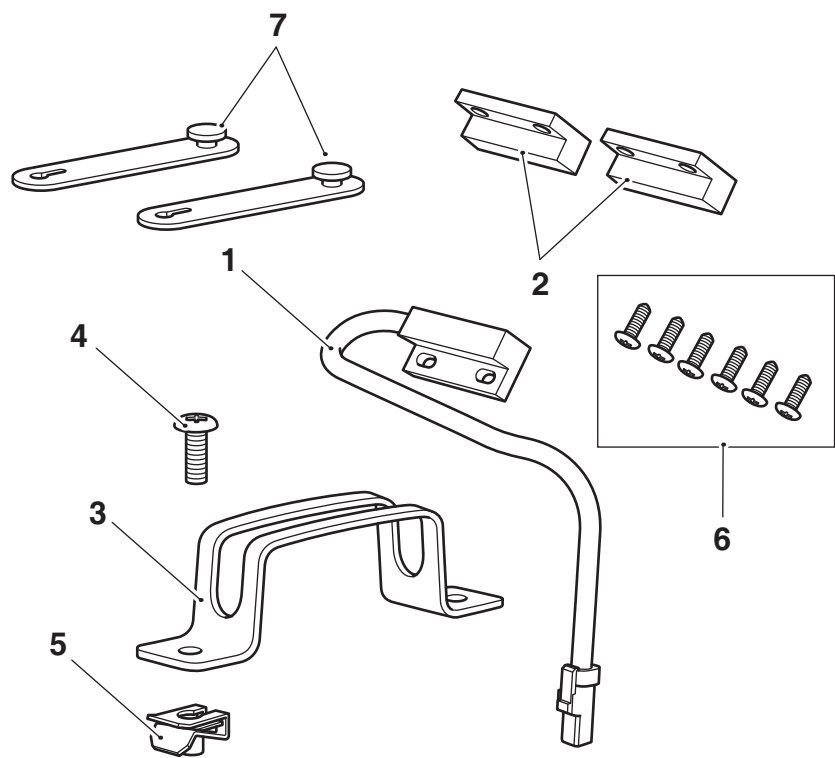
Alarm Fitting Kit	
Kit Number	Models Affected
A9808128	Street Triple S 660cc from VIN 967907, Street Triple R from VIN 982752 up to VIN BF0949, Street Triple RS from VIN 966534 up to VIN BF0949
To be used with the alarm kit listed below.	
Alarm Kit	
Kit Number	Models Affected
A9800100	Street Triple S 660cc from VIN 967907, Street Triple R from VIN 982752 up to VIN BF0949, Street Triple RS from VIN 966534 up to VIN BF0949

Thank you for choosing this Triumph genuine accessory kit. This accessory kit is the product of Triumph's use of proven engineering, exhaustive testing, and continuous striving for superior reliability, safety and performance.

Completely read all of these instructions before commencing the installation of the accessory kit in order to become thoroughly familiar with the kit's features and the installation process.

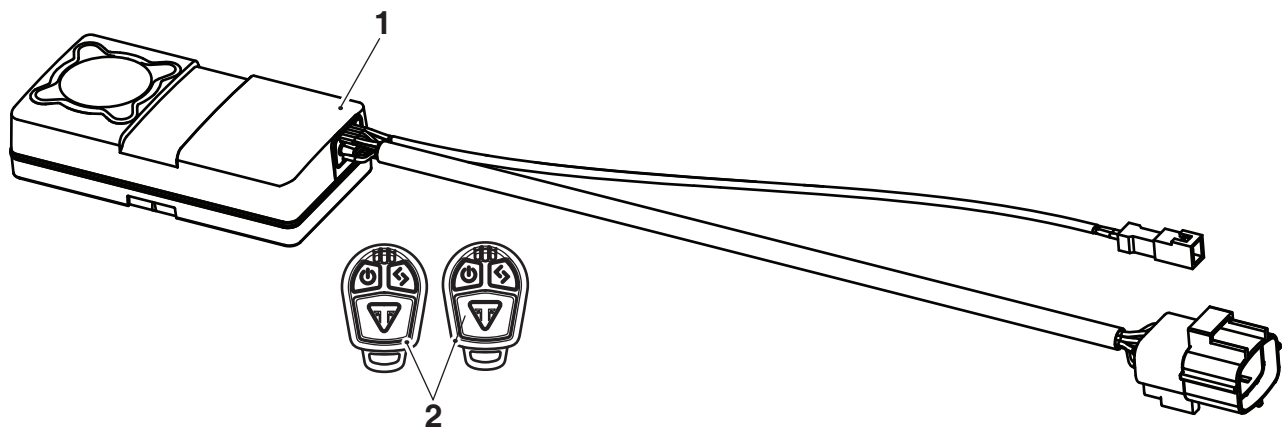
These instructions should be considered a permanent part of your accessory kit, and should remain with it even if your accessory equipped motorcycle is subsequently sold.

Parts Supplied: A9808128



1. Reed-switch	1 off	5. Captive nut	1 off
2. Reed-switch magnet	2 off	6. Self-tapping screw, 8 mm	6 off
3. Bracket	1 off	7. Rubber strap	2 off
4. Fixing, M5 x 12 mm	1 off		

Parts Supplied: A9800100



1. Alarm unit	1 off	3. Quick reference guide (not shown)	1 off
2. Key fob	2 off		



Warning

Fit only genuine Triumph accessories to those models approved by Triumph as listed in the associated Triumph fitting instructions. The accessory kits covered in this instruction are designed for use on specific models of Triumph motorcycle. The accessory kits and the models applicable are listed at the start of the instruction. They should never be fitted to any other Triumph model or to any other manufacturer's motorcycle. Fitting an accessory kit to a Triumph model not listed, or to any other manufacturer's motorcycle will affect the performance, stability and handling of the motorcycle. This may affect the rider's ability to control the motorcycle and could result in an accident causing severe injuries or death.



Warning

Always have Triumph approved parts, accessories and conversions fitted by a trained technician of an authorised Triumph dealer. The fitment of parts, accessories and conversions by a technician who is not of an authorised Triumph dealer may affect the handling, stability or other aspects of the motorcycle's operation which may result in loss of motorcycle control and an accident.



Warning

A torque wrench of known accurate calibration must be used when fitting this accessory kit. Failure to tighten any of the fasteners to the correct torque specification may result in loss of motorcycle control and an accident.



Warning

Make sure the motorcycle is stabilised and adequately supported. Do not support the motorcycle on any ancillary component, the exhaust system or any other non structural parts of the motorcycle frame. A correctly supported motorcycle will help prevent it from falling. An unstable motorcycle may fall, causing injury to the operator or damage to the motorcycle.



Warning

Prolonged storage of the machine with the alarm armed will result in battery drain. Excessive battery drain will cause permanent damage to the battery. The machine should be connected to an appropriate battery conditioner to maintain good battery condition.

Note:

- **Triumph offers a broad range of approved genuine accessories for your motorcycle. We cannot therefore cover all possible equipment variations in these instructions. For removal and installation of Triumph Genuine Accessories, always refer to the instructions supplied with the respective accessory kit. To obtain additional copies of any Triumph accessory instructions, visit www.triumphinstructions.com or contact your authorised Triumph dealer.**

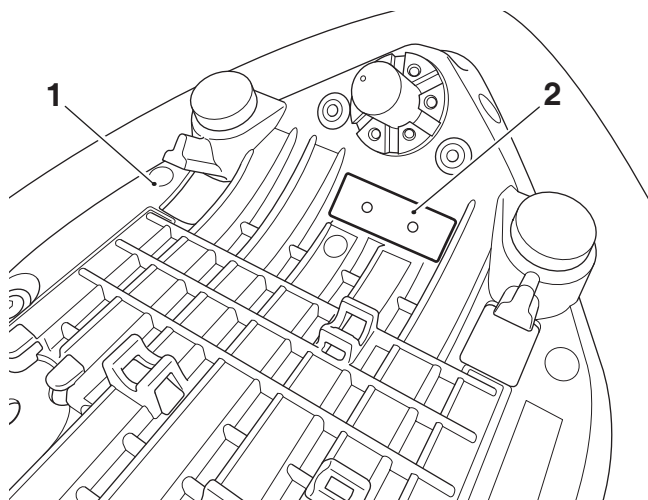
Note:

- **Power supply voltage range - 12 volt DC negative earth.**
 - **System current consumption <2.5 mA in armed condition.**
 - **Once the alarm unit has been fitted, it will become an integral part of the motorcycle and cannot be removed.**
 - **Completely read all of the instructions before commencing the installation and set up of the accessory kit in order to become thoroughly familiar with the kit's features and the installation process.**
 - **Prior to installation, record the serial number from the underside of the alarm unit on the alarm installation certificate.**
1. Remove the rider and passenger seats, or where applicable the seat cowl, as described in the Service Manual.
 2. Disconnect the battery as described in the Service Manual.

Reed-Switch Magnet Fitment

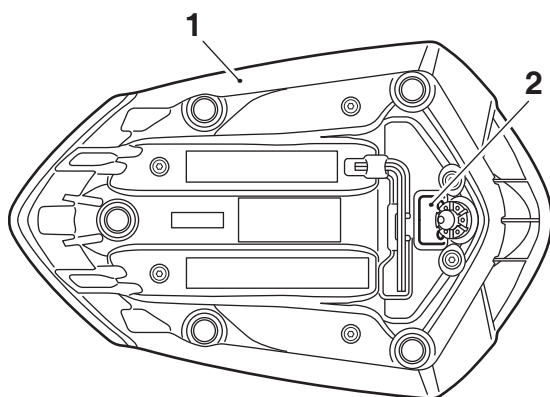
- Place the passenger seat, or seat cowl on a clean non-abrasive surface and locate the reed-switch magnet mounting area on the underside of the seat or seat cowl as shown below. Note the pre-drilled reed-switch magnet fixing holes.

Passenger Seat



- Seat base
- Mounting area, reed-switch magnet

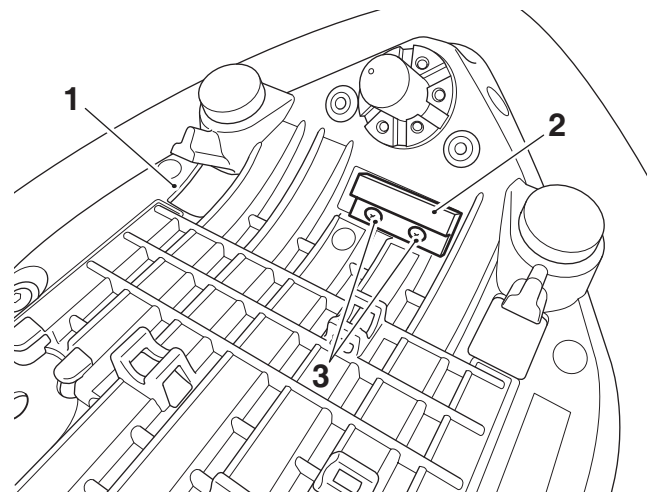
Seat Cowl



- Seat cowl
- Mounting area, reed-switch magnet

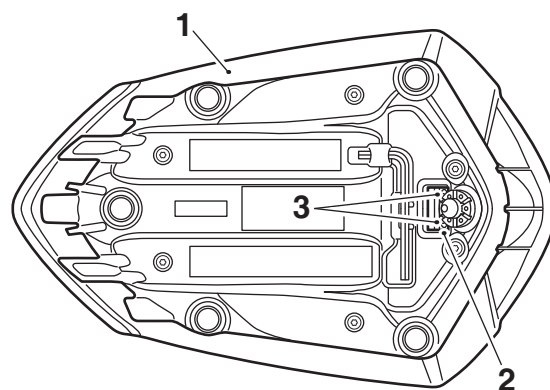
- Peel off the backing strip from the adhesive pad on the reed-switch magnet.
- Align the reed-switch magnet to the fixing holes on the underside of the seat or seat cowl, in the orientation shown. Apply firm and even pressure to the magnet to make sure a good bond is achieved. Secure using the self-tapping screws provided, tighten to **1 Nm**.

Passenger Seat



- Seat base
- Reed-switch magnet
- Self-tapping screws

Seat Cowl



- Seat cowl
- Reed-switch magnet
- Self-tapping screws



Caution

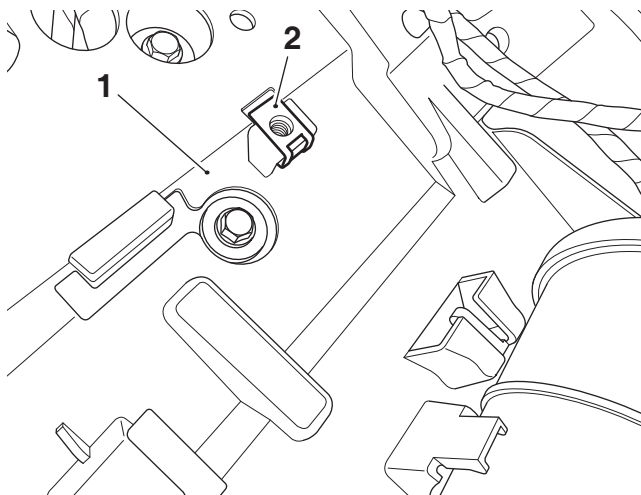
When fitting self-adhesive parts, care must be taken to make sure positioning is correct and accurate. Once the adhesive has been attached to the mounting surface, there is no satisfactory method of removal or re-positioning if incorrectly aligned. Initial bonding is instant, full bonding is achieved after 72 hours.

Alarm Unit Fitment

Note:

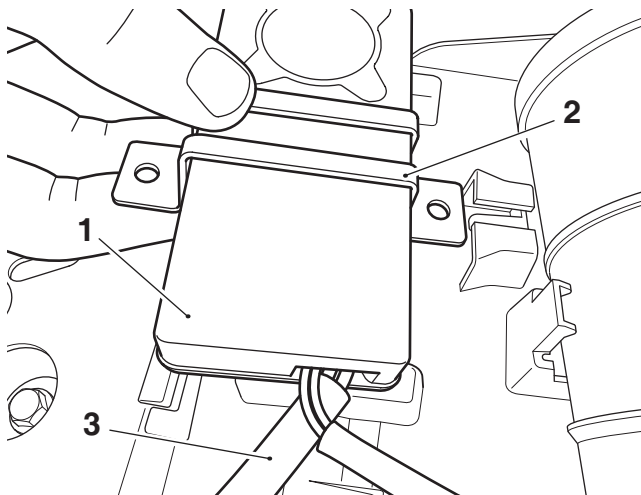
- The following illustrations show the seat bridge removed for clarity.

6. Fit the captive nut provided on to the undertray moulding, in the orientation shown below.



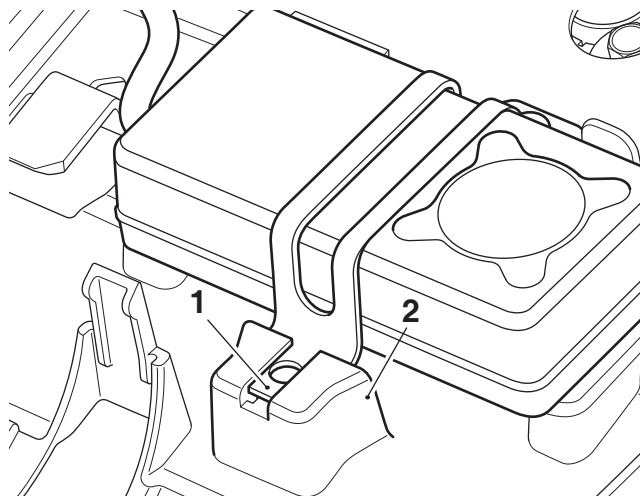
1. Undertray moulding
2. Captive nut

7. Fit the alarm unit and mounting bracket into the undertray moulding with the alarm harness positioned on the right hand side of the motorcycle, as shown.



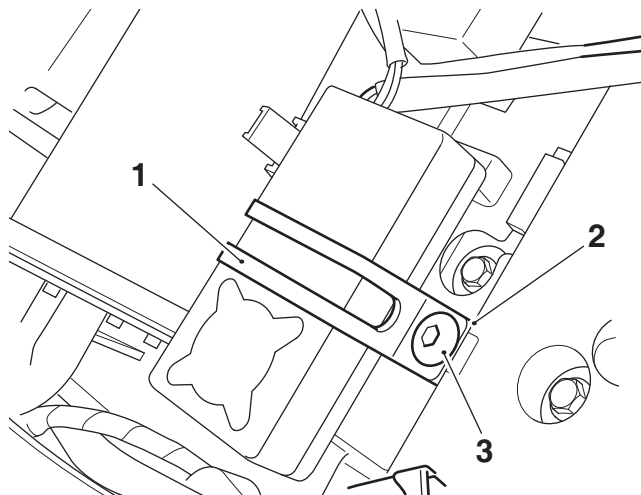
1. Alarm Unit
2. Mounting bracket
3. Alarm Unit wiring

8. Make sure the front section of the mounting bracket locates in the retaining clip on the undertray moulding, as shown.



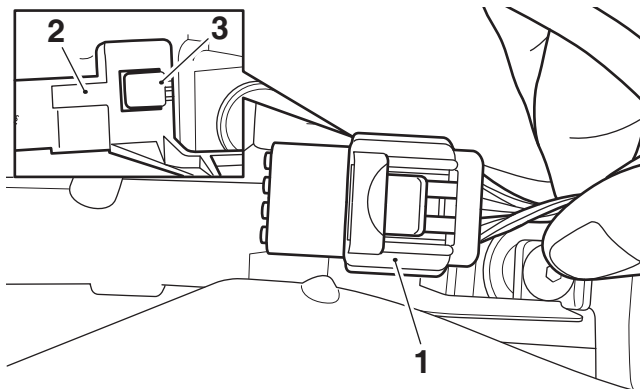
1. Mounting bracket
2. Retaining clip

9. Align the mounting bracket with the captive nut. Fit the M5 x 12 mm fixing provided. Tighten the fixing to **5 Nm**.



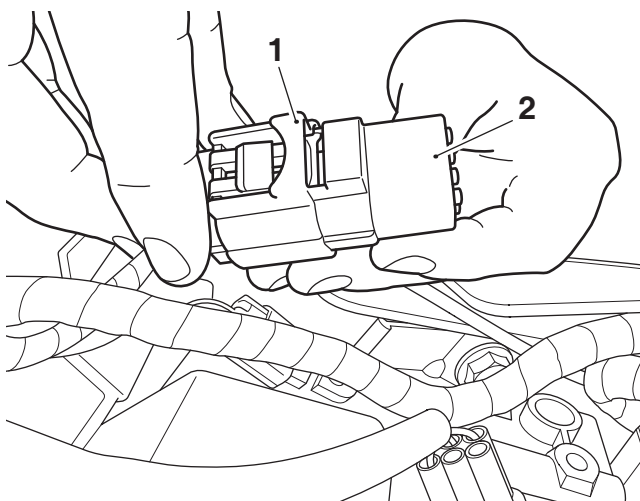
1. Mounting bracket
2. Captive nut
3. Fixing, M5 x 12 mm

10. Locate the alarm connector on the main wiring harness which is attached to a retaining tab on the underseat moulding at the left hand side of the motorcycle.



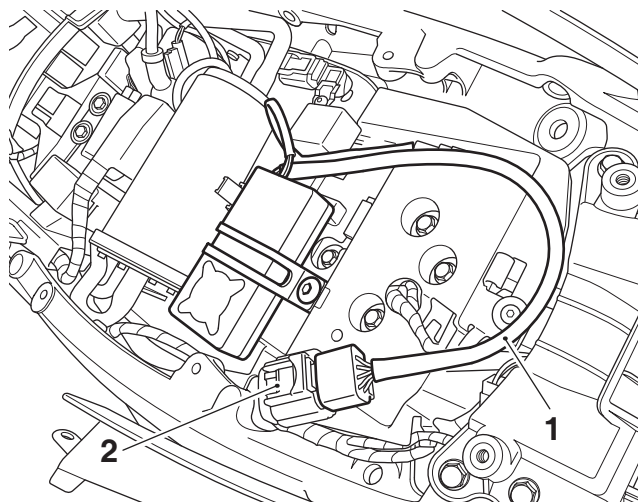
1. Alarm connector, main wiring harness
2. Underseat moulding
3. Retaining tab

11. Remove the blanking plug from the alarm connector. Retain the blanking plug for reuse if the motorcycle is to be returned to its original condition.



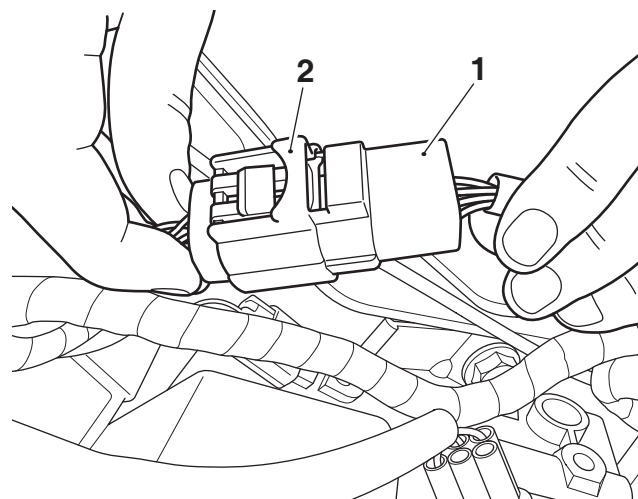
1. Alarm connector
2. Blanking plug

12. Route the alarm wiring harness across to the main wiring harness alarm connector on the left hand side of the motorcycle.



1. Alarm Unit wiring
2. Main wiring harness alarm connector

13. Connect the alarm unit wiring to the main wiring harness alarm connector.

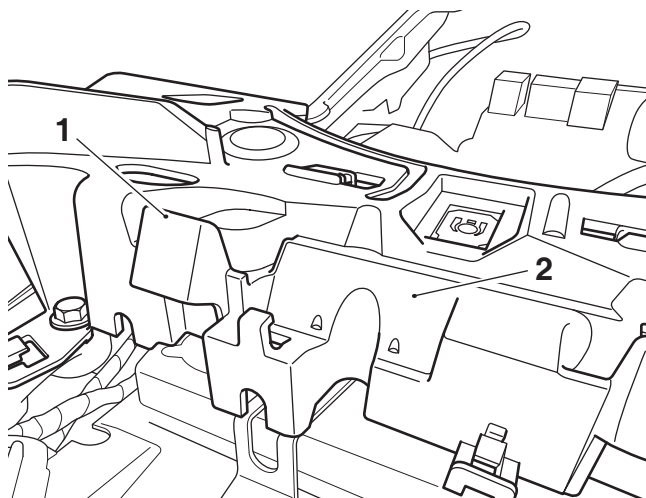


1. Alarm Unit wiring connector
2. Main wiring harness alarm connector

14. Re-attach the alarm unit wiring harness connector to the retaining tab on the underseat moulding.

Reed-Switch Fitment

15. Locate the reed-switch mounting area on the seat bridge moulding below the passenger seat. Note the pre-drilled reed-switch fixing holes.



1. Seat bridge moulding
2. Mounting area, reed-switch

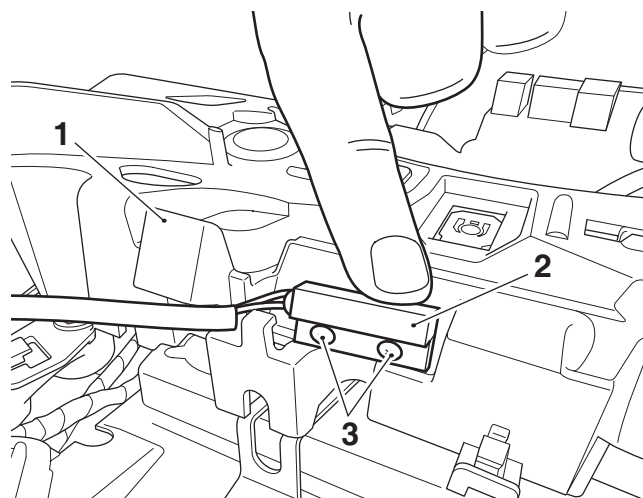


Caution

When fitting self-adhesive parts, care must be taken to make sure positioning is correct and accurate. Once the adhesive has been attached to the mounting surface, there is no satisfactory method of removal or re-positioning if incorrectly aligned. Initial bonding is instant, full bonding is achieved after 72 hours.

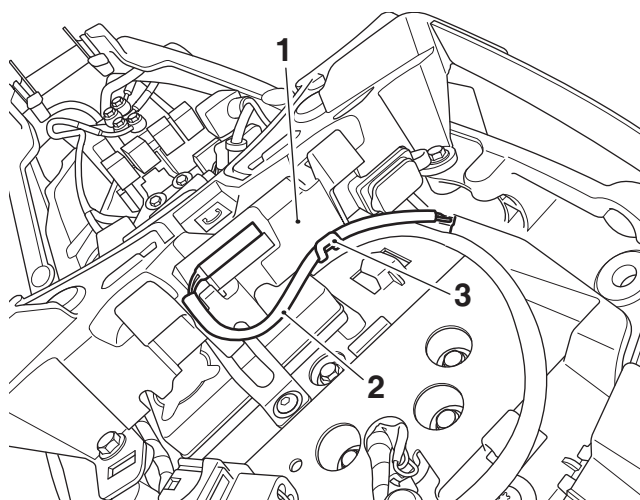
16. Peel off the backing strip from the adhesive pad on the reed-switch.

17. Attach the reed-switch to the seat bridge moulding, aligning the fixing holes in the orientation shown. Apply firm and even pressure to the reed-switch to make sure a good bond is achieved. Secure using the self-tapping screws supplied, tighten to **1 Nm**.



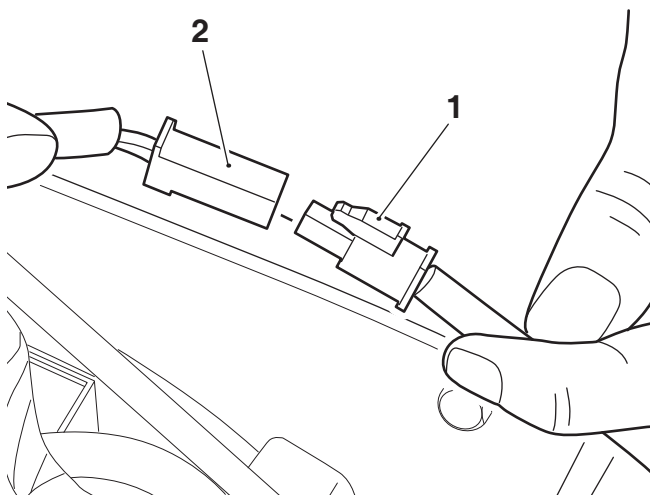
1. Seat bridge moulding
2. Reed-switch
3. Self-tapping screws

18. Route the reed-switch harness across to the right hand side of the motorcycle and attach the harness to the clip on the seat bridge moulding, as shown.



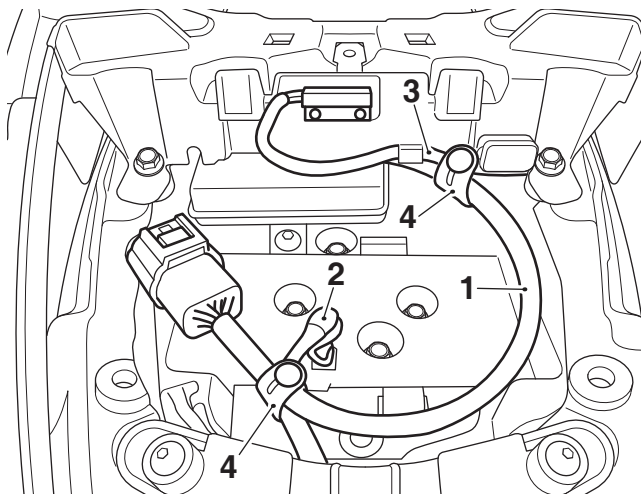
1. Seat bridge moulding
2. Reed-switch harness
3. Clip

19. Connect the reed-switch wiring to the alarm unit wiring harness.



1. Reed-switch wiring connector
2. Alarm Unit wiring connector

20. Make sure the reed-switch harness is secured to the alarm unit wiring harness and the alarm unit wiring harness is secured to the main wiring harness with the rubber straps from the kit, as shown.



1. Alarm Unit wiring harness
2. Main wiring harness
3. Reed-switch harness
4. Rubber straps

21. Reconnect the battery as described in the Service Manual.
22. Refit the rider and passenger seats, or where applicable the seat cowl and check all the functions of the alarm, as detailed in the user guide.

Note:

- The alarm unit is protected by fuse number 1 (10 Amp.) in the motorcycle fuse box.

Post Installation Checks

Check all the functions of the alarm, as described in the User Guide.

The checks and adjustments will reduce the possibility of false alarm activation.

Installation Certificate

The installation certificate is issued by the Triumph dealer and can be used as certification for UK insurance policies. Dealer to visit the English language website: www.TriumphProtectPlus.com

The dealer should click the link to 'Apply for Dealer Access' the first time visiting the website.

The installation certificate will be emailed to the customer. The certificate must be retained by the customer as proof of alarm fitment.



Warning

Never ride an accessory equipped motorcycle at speeds above 80 mph (130 km/h).

The presence of accessories will cause changes in the stability and handling of the motorcycle. Failure to allow for changes in motorcycle stability may result in loss of motorcycle control and an accident.

Remember that the 80 mph (130 km/h) limit will be reduced by the fitting of non-approved accessories, incorrect loading, worn tyres, overall motorcycle condition and poor road or weather conditions.



Warning

The motorcycle must not be operated above the legal road speed limit except in closed-course conditions.



Warning

Only operate this Triumph motorcycle at high speed in closed-course, on-road competition or on closed-course racetracks. High-speed operation should only be attempted by riders who have been instructed in the techniques necessary for high-speed riding and are familiar with the motorcycle's characteristics in all conditions.

High-speed operation in any other circumstances is dangerous and may lead to loss of motorcycle control and an accident.