



Accessory Fitting Instructions

Thank you for choosing this Triumph genuine accessory kit. This accessory kit is the product of Triumph's use of proven engineering, exhaustive testing, and continuous striving for superior reliability, safety and performance.

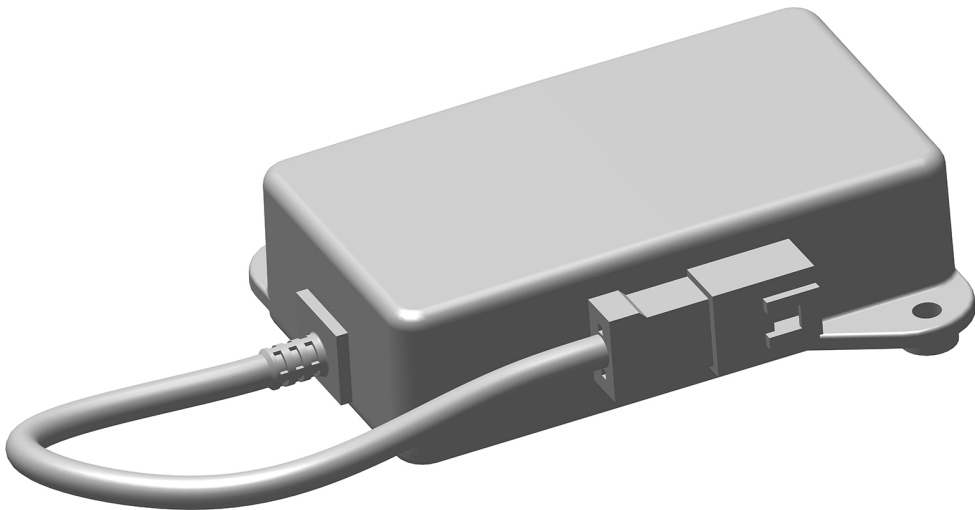
Completely read all of these instructions before commencing the installation of the accessory kit in order to become thoroughly familiar with the kit's features and the installation process.

These instructions should be considered a permanent part of your accessory kit, and should remain with it even if your accessory equipped motorcycle is subsequently sold.

My Triumph Connectivity Module	
Kit Number	Models
A9820200	Rocket 3 R, Rocket 3 R Storm, Rocket 3 GT, Rocket 3 GT Storm, Rocket 3 TFC
To be used with the following fitting kit.	
Fitting Kit	
A9801015	Rocket 3 R, Rocket 3 R Storm, Rocket 3 GT, Rocket 3 GT Storm, Rocket 3 TFC

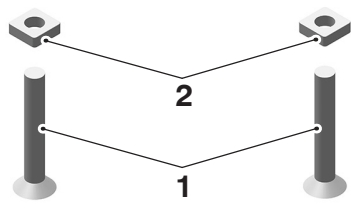
Parts supplied

A9820200



1. Connectivity module	1 off
------------------------	-------

A9801015



1. Fixing, M3 x 20 mm	2 off	2. Bolt, M3	2 off
-----------------------	-------	-------------	-------

⚠ WARNING

Fit only genuine Triumph accessories to those models approved by Triumph as listed in the associated Triumph fitting instructions.

The accessory kits covered in this instruction are designed for use on specific models of Triumph motorcycle. The accessory kits and the models applicable are listed at the start of the instruction. They should never be fitted to any other Triumph model or to any other manufacturer's motorcycle.

Fitting an accessory kit to a Triumph model not listed, or to any other manufacturer's motorcycle, will affect the performance, stability and handling of the motorcycle.

Failure to follow the advice above may lead to loss of motorcycle control which could result in serious injury or death.

⚠ WARNING

Always have Triumph approved parts, accessories and conversions fitted by a competent person with the specialist knowledge and technical understanding of motorcycles, such as an authorised Triumph dealer.

The fitment of parts, accessories and conversions by a person without the specialist knowledge and technical understanding of motorcycles may affect the handling, stability or other aspects of the motorcycle's operation.

Failure to follow the advice above may lead to loss of motorcycle control which could result in serious injury or death.

⚠ WARNING

A torque wrench of known accurate calibration must be used when fitting this accessory kit.

Failure to tighten any of the fasteners to the correct torque specification may affect motorcycle performance, handling and stability.

Failure to follow the advice above may lead to loss of motorcycle control which could result in serious injury or death.

⚠ WARNING

Make sure the motorcycle is stabilised and adequately supported.

Do not support the motorcycle on any ancillary component, the exhaust system or any other non structural parts of the motorcycle frame.

A correctly supported motorcycle will help prevent it from falling.

An unstable motorcycle may fall resulting in motorcycle damage, serious injury or death.

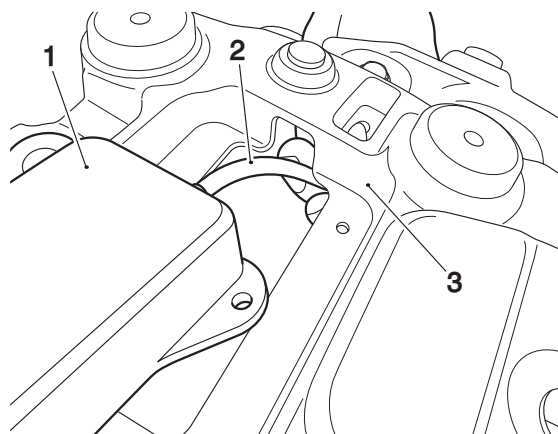
NOTICE

Triumph offers a broad range of approved genuine accessories for your motorcycle.

We cannot therefore cover all possible equipment variations in these instructions. For removal and installation of Triumph Genuine Accessories, always refer to the instructions supplied with the respective accessory kit.

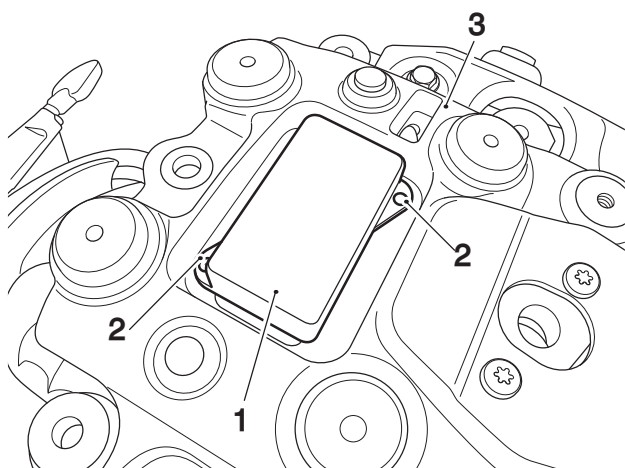
To obtain additional copies of any Triumph accessory instructions, visit www.triumphinstructions.com or contact your authorised Triumph dealer.

1. Remove the rider and passenger seats as described in the Service Manual.
2. Disconnect the battery as described in the Service Manual.
3. If fitted remove the pannier rails as described in the appropriate Triumph Accessories Instruction.
4. Remove the following components as described in the Service Manual.
 - ▼ Rear mudguard undertray.
 - ▼ Storage compartment.
 - ▼ Backrest assembly, where fitted.
 - ▼ Rear mudguard and tail light assembly.
5. Route the connectivity module harness through the aperture in the subframe, in the orientation shown.



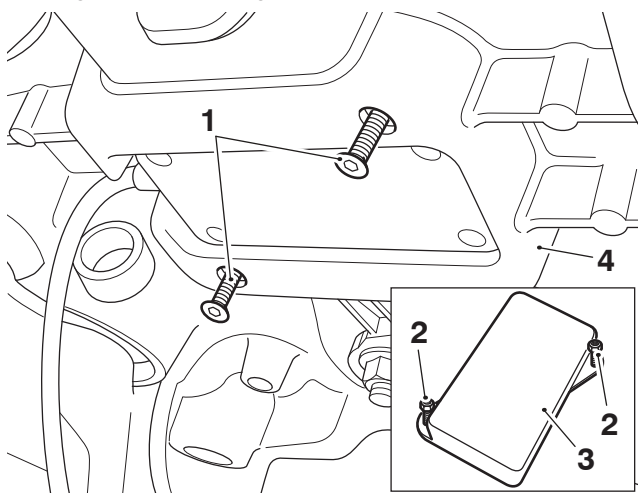
1. Connectivity module
2. Harness
3. Subframe

6. Position the connectivity module in the subframe and align the fixing holes.



1. Connectivity module
2. Fixing holes
3. Subframe

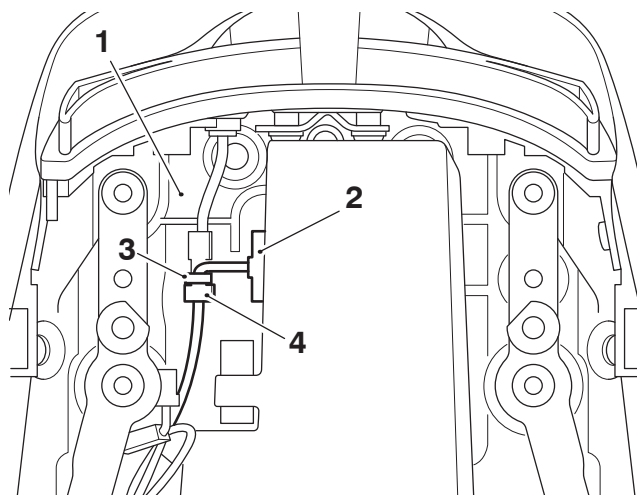
7. Fit the M3 x 20 mm fixings from the fitting kit through the fixing holes from the underside of the subframe, as shown. Fit the M3 bolts from the kit to secure the connectivity module and tighten the fixings to **1 Nm**.



1. Fixings, M3
2. Bolts, M3
3. Connectivity module
4. Subframe

8. On the underside of the subframe at the left hand side of the motorcycle, locate the connectivity module connector on the main wiring harness and remove the blanking plug. Retain the blanking plug if the motorcycle is to be returned to its original condition.

9. Connect the connectivity module harness connector to the main wiring harness connectivity module connector.



1. Subframe
2. Connectivity module
3. Connectivity module harness connector
4. Main wiring harness connectivity module connector

10. Refit the following components as described in the Service Manual.
 - ▼ Rear mudguard undertray.
 - ▼ Storage compartment.
 - ▼ Backrest assembly, where fitted.
 - ▼ Rear mudguard and tail light assembly
11. Where applicable, refit the pannier rails as described in the appropriate Triumph Accessories Instruction.
12. Reconnect the battery, as described in the Service Manual.
13. Refit the rider and passenger seats as described in the Service Manual.
14. Refer to appendix A for software installation.
15. Print out appendix B and hand to the customer.

⚠ WARNING

After fitting the accessory kit the motorcycle will exhibit new handling characteristics.

Operate the motorcycle in a safe area free from traffic to gain familiarity with any new characteristics.

Operation of the motorcycle when not familiar with any new handling characteristics may lead to loss of motorcycle control which could result in serious injury or death.

⚠ WARNING

If, after fitting this accessory kit, you have any doubt about the performance of any aspect of the motorcycle, contact a competent person with the specialist knowledge and technical understanding of motorcycles, such as an authorised Triumph dealer.

Riding a motorcycle when there is any doubt as to any aspect of the performance of the motorcycle may lead to loss of motorcycle control which could result in serious injury or death.

⚠ WARNING

Never ride an accessory-equipped motorcycle at speeds above 80 mph (130 km/h).

Remember that the 80 mph (130 km/h) limit will be reduced by the fitting of non-approved accessories, incorrect loading, worn tyres, overall motorcycle condition and poor road or weather conditions.

The presence of accessories will cause changes in the stability and handling of the motorcycle. Failure to allow for changes in motorcycle stability may lead to loss of motorcycle control which could result in serious injury or death.

⚠ WARNING

High-speed operation should only be attempted by riders who have been instructed in the techniques necessary for high-speed riding and are familiar with the motorcycle's characteristics in all conditions.

Only operate this Triumph motorcycle at high speed in closed-course, on-road competition or on closed-course racetracks.

High-speed operation in any other circumstances is dangerous and may lead to loss of motorcycle control which could result in serious injury or death.

NOTICE

The motorcycle must not be operated above the legal road speed limit except in closed-course conditions.