



Accessory Fitting Instructions

Thank you for choosing this Triumph genuine accessory kit. This accessory kit is the product of Triumph's use of proven engineering, exhaustive testing, and continuous striving for superior reliability, safety and performance.

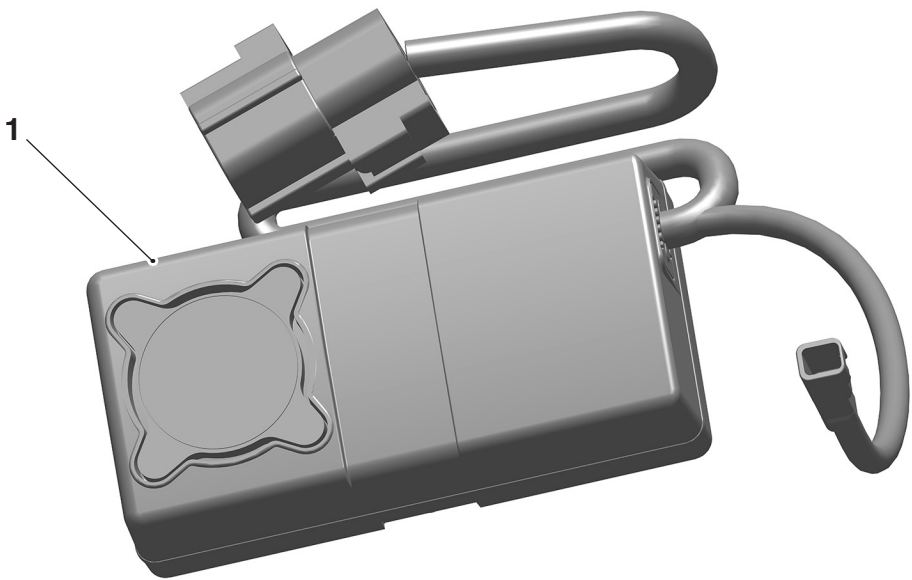
Completely read all of these instructions before commencing the installation of the accessory kit in order to become thoroughly familiar with the kit's features and the installation process.

These instructions should be considered a permanent part of your accessory kit, and should remain with it even if your accessory equipped motorcycle is subsequently sold.

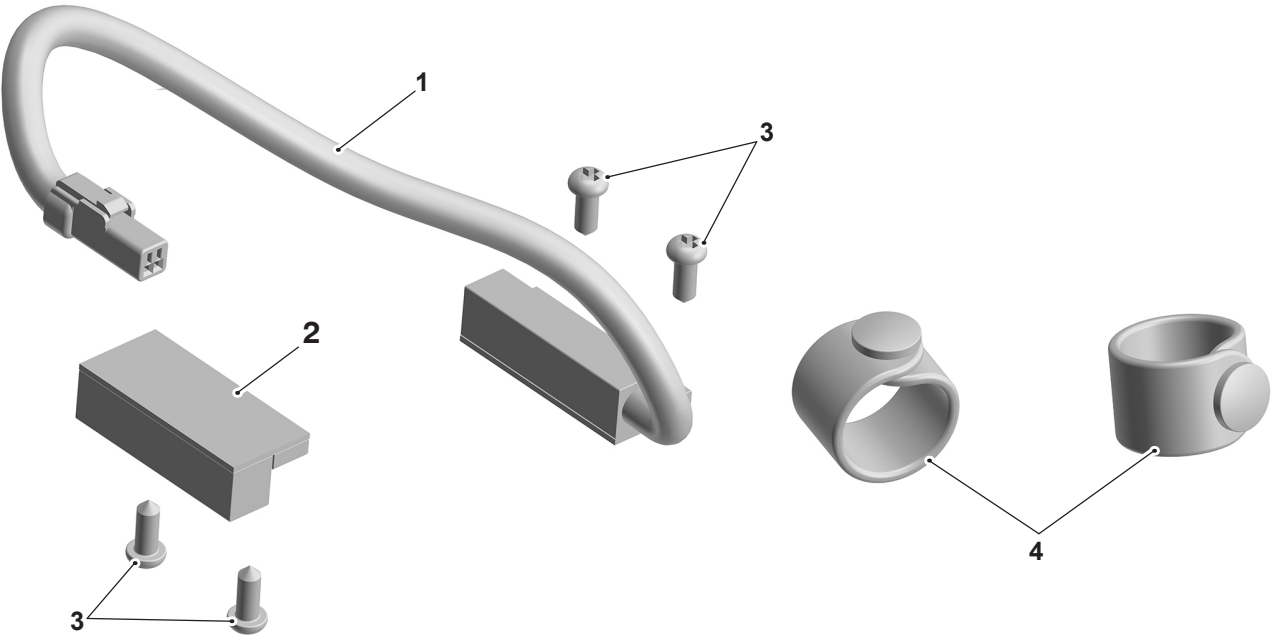
Alarm Kit	
Kit Number	Models
A9800100	Rocket 3 R, Rocket 3 R Black, Rocket 3 R Storm, Rocket 3 GT, Rocket 3 TFC, Rocket 3 GT Triple Black, Rocket 3 GT Storm
To be used with the alarm fitting kit listed below.	
Alarm Fitting Kit	
A9801012	Rocket 3 R, Rocket 3 R Black, Rocket 3 R Storm, Rocket 3 GT, Rocket 3 TFC, Rocket 3 GT Triple Black, Rocket 3 GT Storm

Parts supplied

A9800100



1. Alarm kit	1 off	3. Quick reference guide (not shown)	1 off
2. Key fob (not shown)	1 off		



1. Reed switch	1 off	3. Screws, self tapping	4 off
2. Reed switch magnet	1 off	4. Rubber band	2 off

⚠ WARNING

Fit only genuine Triumph accessories to those models approved by Triumph as listed in the associated Triumph fitting instructions.

The accessory kits covered in this instruction are designed for use on specific models of Triumph motorcycle. The accessory kits and the models applicable are listed at the start of the instruction. They should never be fitted to any other Triumph model or to any other manufacturer's motorcycle.

Fitting an accessory kit to a Triumph model not listed, or to any other manufacturer's motorcycle, will affect the performance, stability and handling of the motorcycle.

Failure to follow the advice above may lead to loss of motorcycle control which could result in serious injury or death.

⚠ WARNING

Always have Triumph approved parts, accessories and conversions fitted by a competent person with the specialist knowledge and technical understanding of motorcycles, such as an authorised Triumph dealer.

The fitment of parts, accessories and conversions by a person without the specialist knowledge and technical understanding of motorcycles may affect the handling, stability or other aspects of the motorcycle's operation.

Failure to follow the advice above may lead to loss of motorcycle control which could result in serious injury or death.

⚠ WARNING

A torque wrench of known accurate calibration must be used when fitting this accessory kit.

Failure to tighten any of the fasteners to the correct torque specification may affect motorcycle performance, handling and stability.

Failure to follow the advice above may lead to loss of motorcycle control which could result in serious injury or death.

⚠ WARNING

Make sure the motorcycle is stabilised and adequately supported.

Do not support the motorcycle on any ancillary component, the exhaust system or any other non structural parts of the motorcycle frame.

A correctly supported motorcycle will help prevent it from falling.

An unstable motorcycle may fall resulting in motorcycle damage, serious injury or death.

NOTICE

Triumph offers a broad range of approved genuine accessories for your motorcycle.

We cannot therefore cover all possible equipment variations in these instructions. For removal and installation of Triumph Genuine Accessories, always refer to the instructions supplied with the respective accessory kit.

To obtain additional copies of any Triumph accessory instructions, visit www.triumphinstructions.com or contact your authorised Triumph dealer.

NOTICE

Prolonged storage of the machine with the alarm armed will result in battery drain.

Excessive battery drain will cause permanent damage to the battery.

The machine should be connected to an appropriate battery conditioner to maintain good battery condition.

NOTICE

Once the alarm unit has been fitted, it will become an integral part of the motorcycle and cannot be removed.

Prior to installation, record the serial number from the underside of the alarm unit on the alarm installation certificate.

NOTICE

Power supply voltage range - 12 volt DC negative earth.

System current consumption <2.5 mA in armed condition.

NOTICE

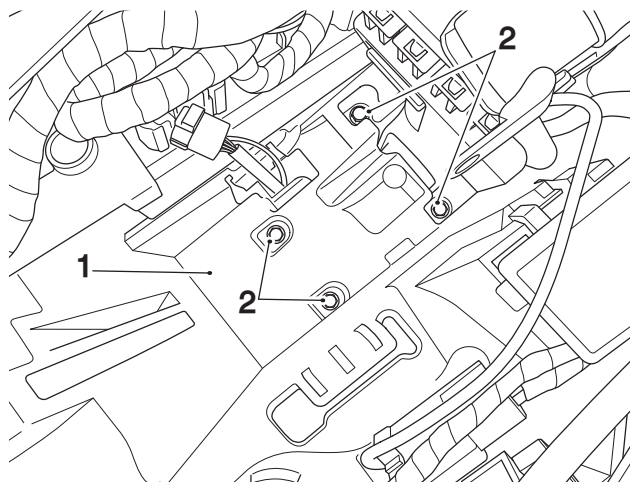
Completely read all of the instructions before commencing the installation and set up of the accessory kit in order to become thoroughly familiar with the kit's features and the installation process.

NOTICE

Prior to installation, record the serial number from the underside of the alarm or tracker unit on the installation certificate.

1. Remove the rider and passenger seats, as described in the Service Manual.
2. Disconnect the battery, negative (black) lead first.
3. Remove the battery as described in the Service Manual.

4. Remove the tool kit.
5. Remove the four fixings in the base of the battery tray to release the alarm mounting panel. Retain the fixings for reuse.

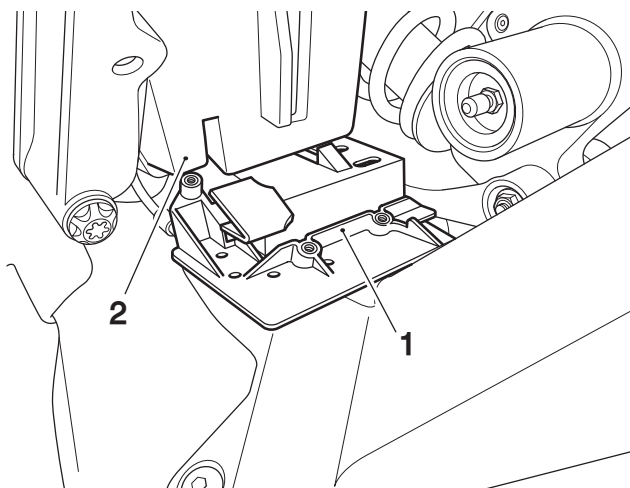


1. Battery tray
2. Fixings

NOTICE

If necessary, to allow easier access for the removal and refitting of the alarm mounting panel, jack up the motorcycle and allow the swing arm to lower slightly.

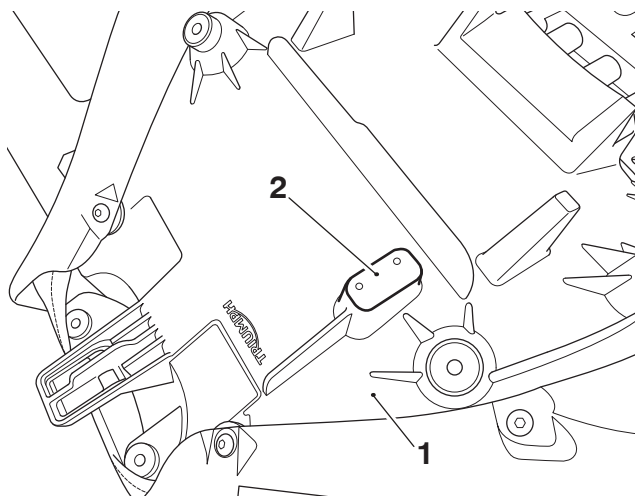
6. Remove the alarm mounting panel from the underside of the battery tray on the left hand side of the motorcycle.



1. Alarm mounting panel
2. Battery tray

Reed Switch Magnet Fitment

7. Place the seats on a clean non-abrasive surface and locate the reed switch magnet mounting area on the underside of the rider seat. Note, the reed switch magnet mounting holes are pre-drilled.



1. Rider seat base
2. Mounting area, reed switch magnet

NOTICE

When fitting self-adhesive parts care must be taken to make sure positioning is correct and accurate.

Once the adhesive has been attached to the mounting surface, there is no satisfactory method of removal and re-positioning if incorrectly aligned.

Initial bonding is instant, full bonding is achieved after 72 hours.

NOTICE

Read the warning notices printed on the cleaning wipe packet in the fitting kit

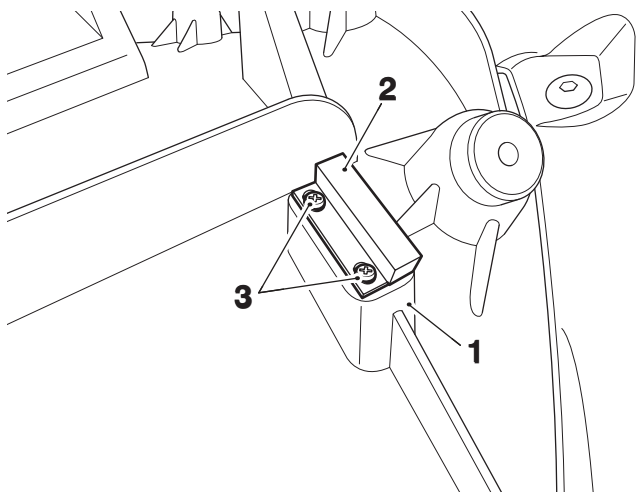
NOTICE

The surface to which the reed switch magnet is affixed must be clean and dry to ensure that the adhesive has a sound base to adhere to.

Use the cleaning wipe supplied for this purpose.

8. Peel off the backing strip from the adhesive pad on the reed switch magnet.

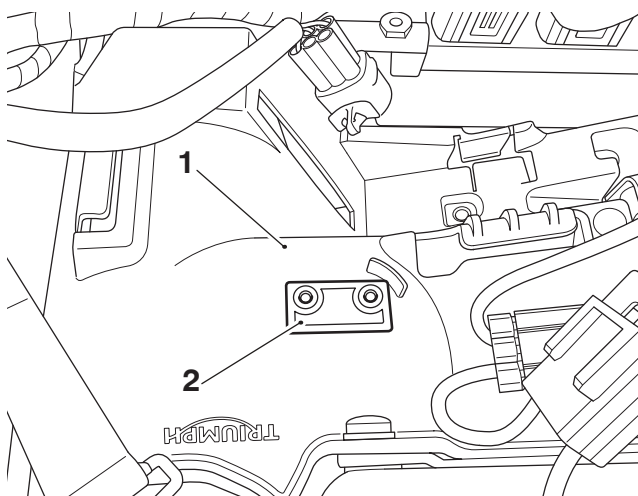
9. Align the reed switch magnet to the fixing holes on the underside of the rider seat, in the orientation shown. Apply firm and even pressure to the magnet to ensure a good bond is achieved. Secure using the self-tapping screws provided.



1. Seat base
2. Reed switch magnet
3. Screw, self tapping

Reed Switch Fitment

10. Locate the reed switch mounting area on the right hand side of the underseat moulding. Note the pre-drilled reed switch fixing holes.



1. Underseat moulding
2. Mounting area, reed switch

NOTICE

When fitting self-adhesive parts care must be taken to make sure positioning is correct and accurate.

Once the adhesive has been attached to the mounting surface, there is no satisfactory method of removal and re-positioning if incorrectly aligned.

Initial bonding is instant, full bonding is achieved after 72 hours.

NOTICE

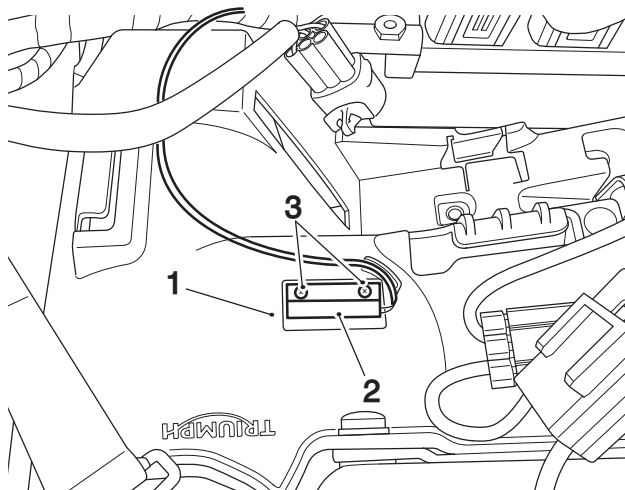
Read the warning notices printed on the cleaning wipe packet in the fitting kit

NOTICE

The surface to which the reed switch magnet is affixed must be clean and dry to ensure that the adhesive has a sound base to adhere to.

Use the cleaning wipe supplied for this purpose.

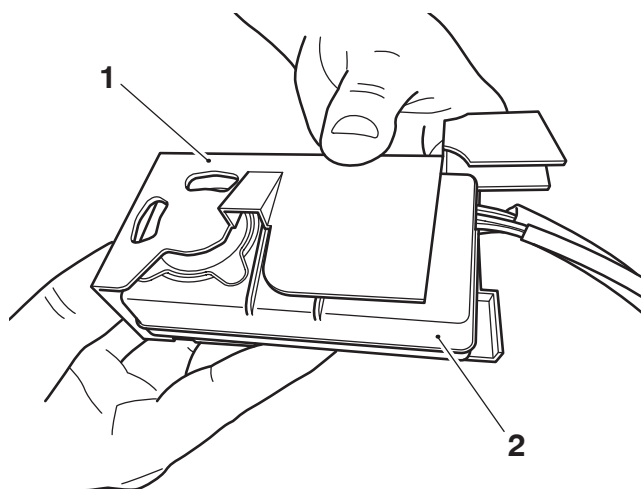
11. Peel off the backing strip from the adhesive pad on the reed switch.
12. Attach the reed switch to the underseat moulding, aligning the fixing holes in the orientation shown. Apply firm and even pressure to the reed switch to ensure a good bond is achieved. Secure using the self-tapping screws provided.



1. Underseat moulding
2. reed switch
3. Screw, self tapping

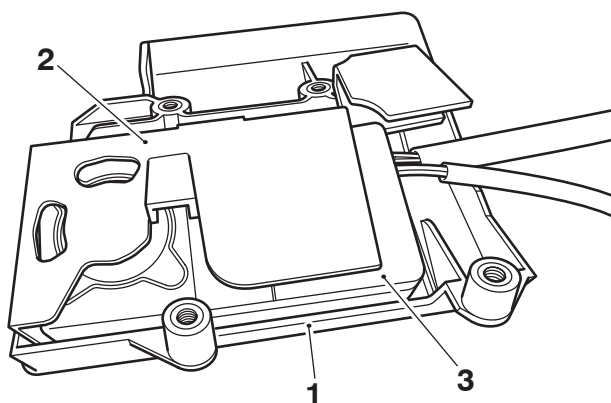
Alarm Unit Fitment

13. Remove the alarm unit holder from the alarm mounting panel. Fit the alarm unit in to the holder in the orientation shown.



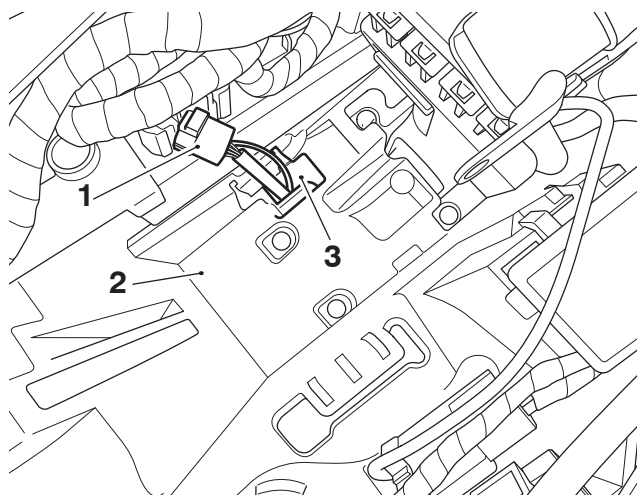
1. Alarm unit holder
2. Alarm unit

14. Fit the alarm unit holder and alarm unit in to the alarm mounting panel in the orientation shown.



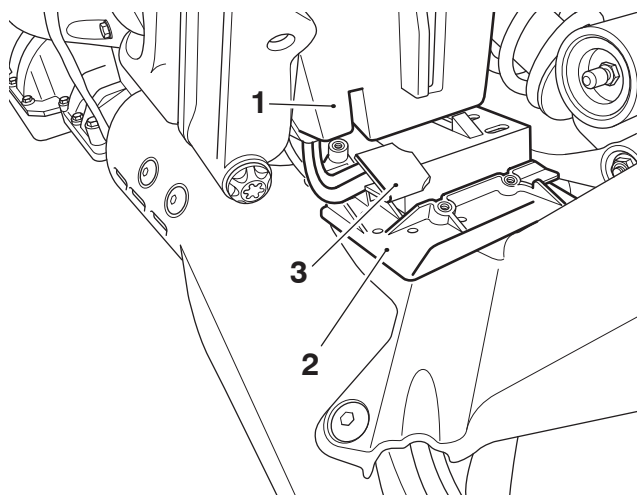
1. Alarm mounting panel
2. Alarm unit holder
3. Alarm unit

15. Route the alarm wiring harness through the aperture in the bottom of the battery tray on the left hand side of the motorcycle, as shown.



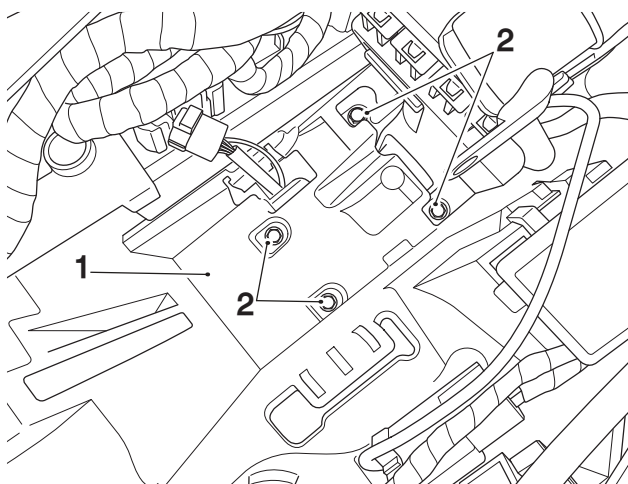
1. Alarm wiring harness
2. Battery tray
3. Aperture

16. From the left hand side of the motorcycle refit the alarm mounting panel to the underside of the battery tray in the orientation shown.



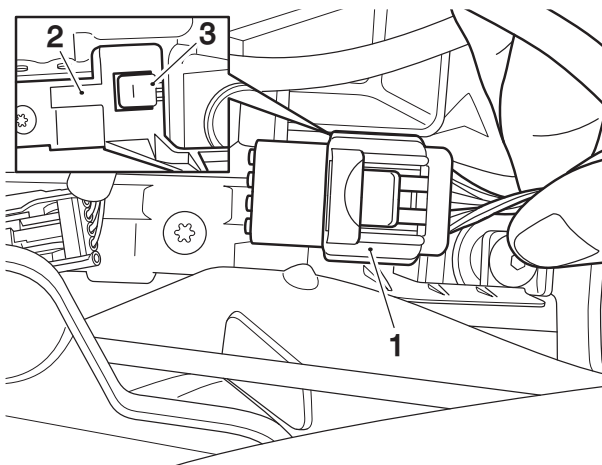
1. Battery tray
2. Alarm mounting panel
3. Alarm unit holder

17. Refit the four original fixings through the base of the battery tray to secure the alarm mounting panel. Tighten the fixings to **3 Nm**.



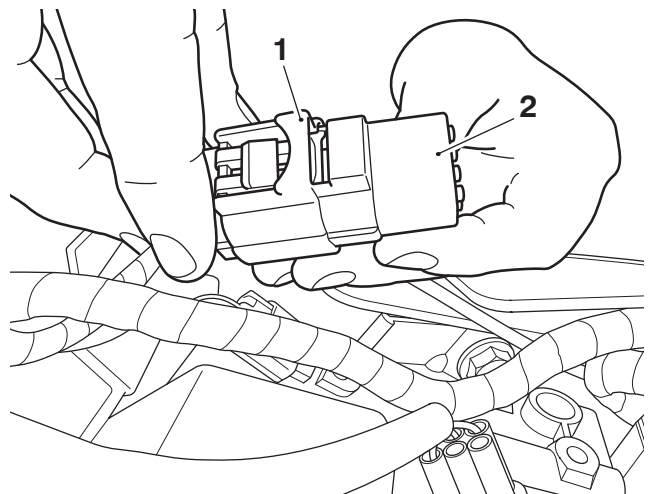
- 1. Battery tray**
2. Fixings

18. Locate the alarm connector on the main wiring harness which is attached to a retaining tab on the underseat moulding at the left hand side of the motorcycle.



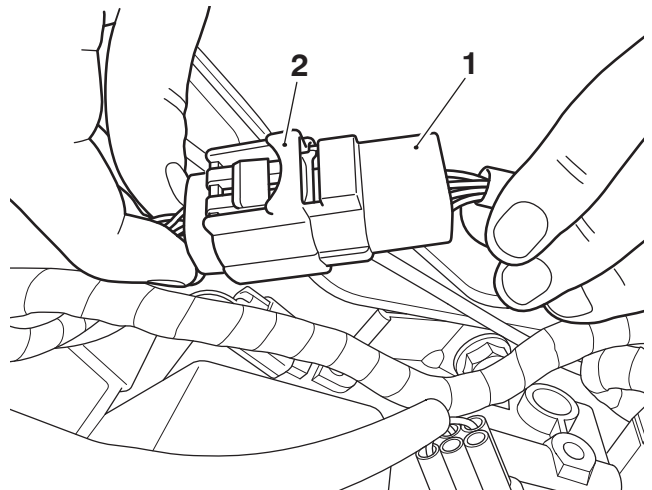
- 1. Alarm connector, main wiring harness**
2. Underseat moulding
3. Retaining tab

19. Slide the alarm connector off the retaining tab on the underseat moulding. Remove the blanking plug from the alarm connector. Retain the blanking plug for reuse if the motorcycle is to be returned to its original condition.



- 1. Alarm connector**
2. Blanking plug

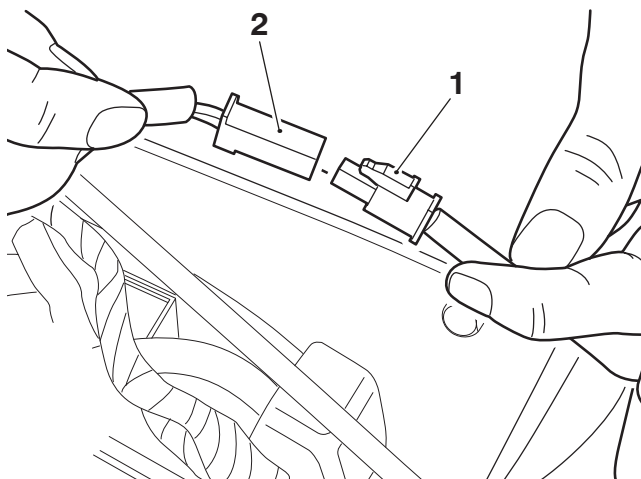
20. Connect the alarm wiring harness connector to the main wiring harness connector.



- 1. Alarm unit harness connector**
2. Main wiring harness connector

21. Refit the alarm connector to the retaining tab on the underseat moulding.
22. Route the reed switch harness around the rear of the battery tray area of the underseat moulding to the left hand side of the motorcycle.

23. Connect the reed switch wiring connector to the alarm unit wiring harness connector.



1. Reed switch wiring connector
2. Alarm unit wiring connector

24. Refit the battery as described in the Service Manual.
25. Reconnect the battery, positive (red) lead first.
26. Refit the tool kit.
27. Refit the rider and passenger seats, as described in the Service Manual and check all the functions of the alarm, as detailed in the user guide.
28. Complete the certificate supplied with the alarm kit and return to the customer. The certificate of installation must be retained by the customer as proof of alarm fitment.

NOTICE

The alarm unit is protected by fuse number 1 (7.5 Amp.) in the motorcycle fuse box.

All Models

Post Installation Checks

Check all the functions of the alarm as described in the User Guide. The Triumph Protect+ User Guide is available online at www.triumphinstructions.com using reference A9800100.

The checks and adjustments will reduce the possibility of false alarm activation.

Installation Certificate

The installation certificate is issued by the Triumph dealer. Dealer to visit: www.TriumphProtectPlus.com

The dealer should click the link to 'Apply for Dealer Access' the first time visiting the website.

The installation certificate will be emailed to the customer. The certificate must be retained by the customer as proof of alarm fitment.

⚠ WARNING

After fitting the accessory kit the motorcycle will exhibit new handling characteristics.

Operate the motorcycle in a safe area free from traffic to gain familiarity with any new characteristics.

Operation of the motorcycle when not familiar with any new handling characteristics may lead to loss of motorcycle control which could result in serious injury or death.

⚠ WARNING

If, after fitting this accessory kit, you have any doubt about the performance of any aspect of the motorcycle, contact a competent person with the specialist knowledge and technical understanding of motorcycles, such as an authorised Triumph dealer.

Riding a motorcycle when there is any doubt as to any aspect of the performance of the motorcycle may lead to loss of motorcycle control which could result in serious injury or death.

⚠ WARNING

Never ride an accessory-equipped motorcycle at speeds above 80 mph (130 km/h).

Remember that the 80 mph (130 km/h) limit will be reduced by the fitting of non-approved accessories, incorrect loading, worn tyres, overall motorcycle condition and poor road or weather conditions.

The presence of accessories will cause changes in the stability and handling of the motorcycle. Failure to allow for changes in motorcycle stability may lead to loss of motorcycle control which could result in serious injury or death.

⚠ WARNING

High-speed operation should only be attempted by riders who have been instructed in the techniques necessary for high-speed riding and are familiar with the motorcycle's characteristics in all conditions.

Only operate this Triumph motorcycle at high speed in closed-course, on-road competition or on closed-course racetracks.

High-speed operation in any other circumstances is dangerous and may lead to loss of motorcycle control which could result in serious injury or death.

NOTICE

The motorcycle must not be operated above the legal road speed limit except in closed-course conditions.