



Accessory Fitting Instructions

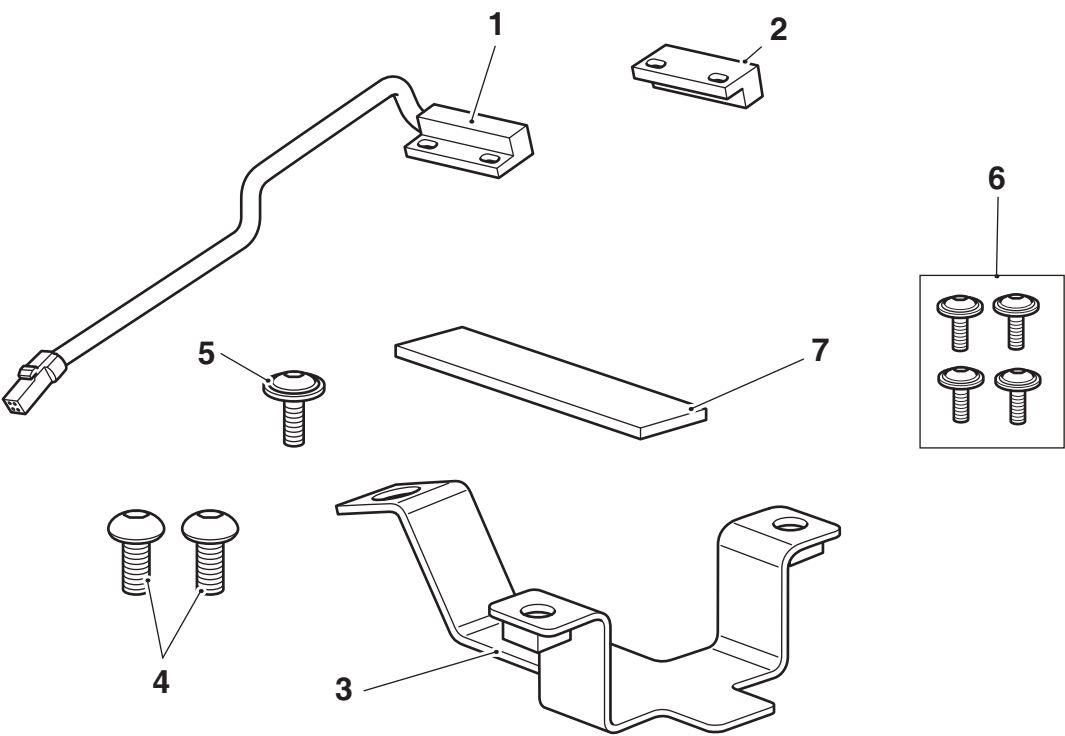
Alarm Fitting Kit	
Kit Number	Models Affected
A9800115	Tiger 900, Tiger 900 GT, Tiger 900 GT (LRH), Tiger 900 GT Pro, Tiger 900 GT Aragon Edition, Tiger 900 Rally, Tiger 900 Rally Pro, Tiger 900 Rally Aragon Edition, Tiger 850 Sport
To be used with the alarm kit listed below.	
Alarm Kit	
Kit Number	Models Affected
A9800100	Tiger 900, Tiger 900 GT, Tiger 900 GT (LRH), Tiger 900 GT Pro, Tiger 900 GT Aragon Edition, Tiger 900 Rally, Tiger 900 Rally Pro, Tiger 900 Rally Aragon Edition, Tiger 850 Sport

Thank you for choosing this Triumph genuine accessory kit. This accessory kit is the product of Triumph's use of proven engineering, exhaustive testing, and continuous striving for superior reliability, safety and performance.

Completely read all of these instructions before commencing the installation of the accessory kit in order to become thoroughly familiar with the kit's features and the installation process.

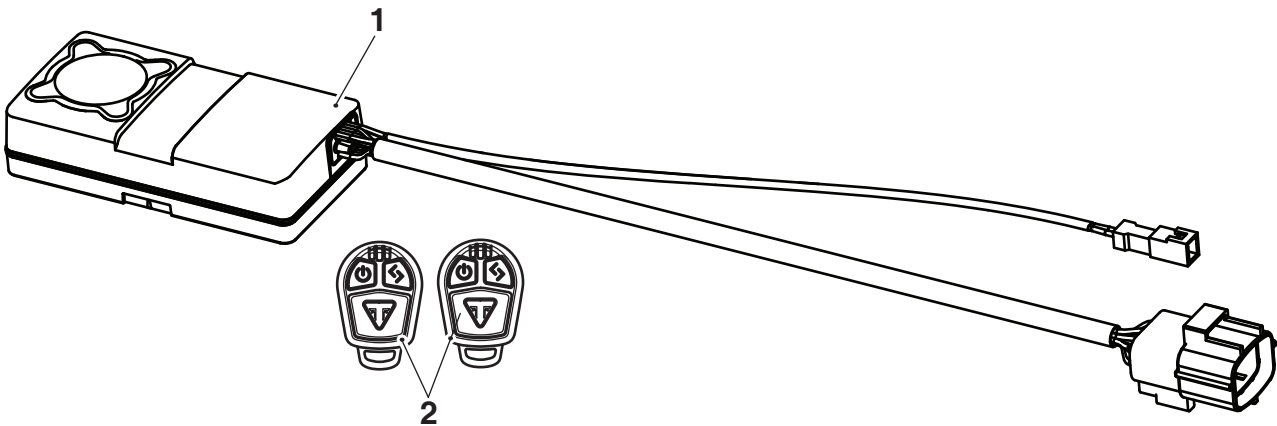
These instructions should be considered a permanent part of your accessory kit, and should remain with it even if your accessory equipped motorcycle is subsequently sold.

Part Supplied: A9800115



1. Reed-switch	1 off	5. Self-tapping screw, 11 mm	1 off
2. Reed-switch magnet	1 off	6. Self-tapping screw, 8 mm	4 off
3. Alarm bracket	1 off	7. Foam pad	1 off
4. Fixing, M6 x 12 mm	2 off	8. Cleaning wipe (not shown)	1 off

Parts Supplied: A9800100



1. Alarm unit	1 off	3. Quick reference guide (not shown)	1 off
2. Key fob	2 off		



Warning

Fit only genuine Triumph accessories to those models approved by Triumph as listed in the associated Triumph fitting instructions. The accessory kits covered in this instruction are designed for use on specific models of Triumph motorcycle. The accessory kits and the models applicable are listed at the start of the instruction. They should never be fitted to any other Triumph model or to any other manufacturer's motorcycle. Fitting an accessory kit to a Triumph model not listed, or to any other manufacturer's motorcycle will affect the performance, stability and handling of the motorcycle. This may affect the rider's ability to control the motorcycle and could result in an accident causing severe injuries or death.



Warning

Always have Triumph approved parts, accessories and conversions fitted by a trained technician of an authorised Triumph dealer. The fitment of parts, accessories and conversions by a technician who is not of an authorised Triumph dealer may affect the handling, stability or other aspects of the motorcycle's operation which may result in loss of motorcycle control and an accident.



Warning

A torque wrench of known accurate calibration must be used when fitting this accessory kit. Failure to tighten any of the fasteners to the correct torque specification may result in loss of motorcycle control and an accident.



Warning

Throughout this operation, ensure that the motorcycle is stabilised and adequately supported to prevent risk of injury from the motorcycle falling.



Warning

Prolonged storage of the machine with the alarm armed will result in battery drain. Excessive battery drain will cause permanent damage to the battery. The machine should be connected to an appropriate battery conditioner to maintain good battery condition.

Note:

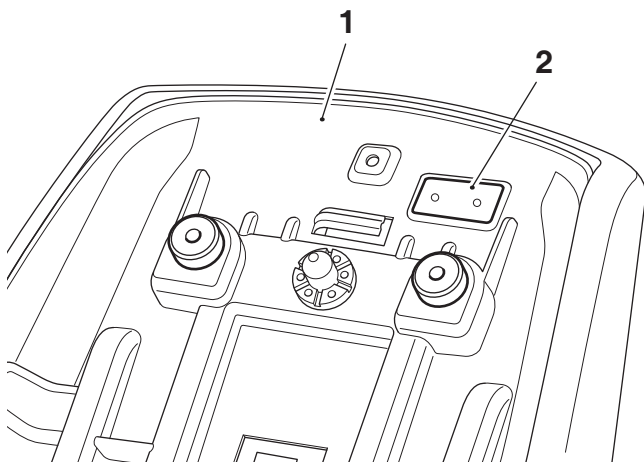
- Triumph offers a broad range of approved genuine accessories for your motorcycle. We cannot therefore cover all possible equipment variations in these instructions. For removal and installation of Triumph Genuine Accessories, always refer to the instructions supplied with the respective accessory kit. To obtain additional copies of any Triumph accessory instructions, visit www.triumphinstructions.com or contact your authorised Triumph dealer.

Note:

- Power supply voltage range - 12 volt DC negative earth.
 - System current consumption <2.5 mA in armed condition.
 - Once the alarm has been fitted, it will become an integral part of the motorcycle and cannot be removed.
 - Completely read all of the instructions before commencing the installation and set up of the accessory kit in order to become thoroughly familiar with the kit's features and the installation process.
 - Prior to installation, record the serial number from the underside of the alarm unit on the installation certificate.
- Remove the rider and passenger seats, as described in the Service Manual.
 - Disconnect the battery, as described in the Service Manual.

Reed-Switch Magnet Fitment

1. Place the passenger seat on a clean non-abrasive surface and locate the reed-switch magnet mounting area on the underside of the seat. Note, the reed-switch magnet mounting holes are pre-drilled.



1. Seat base
2. Mounting area, reed-switch magnet



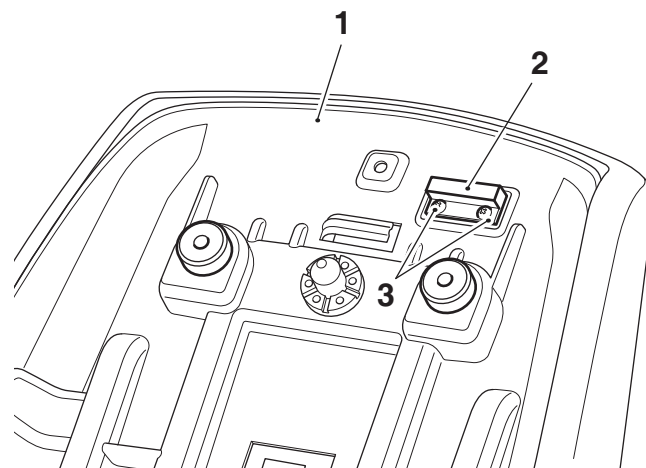
Caution

When fitting self-adhesive parts, care must be taken to ensure positioning is correct and accurate. Once the adhesive has been attached to the mounting surface, there is no satisfactory method of removal or re-positioning if incorrectly aligned. Initial bonding is instant, full bonding is achieved after 72 hours.

Note:

- Read the warning notices printed on the cleaning wipe packet in the fitting kit.
 - The surface to which the reed-switch magnet is affixed must be clean and dry to ensure that the adhesive has a sound base to adhere to. Use the cleaning wipe supplied for this purpose.
2. Peel off the backing strip from the adhesive pad on the reed-switch magnet.

3. Align the reed-switch magnet to the fixing holes on the underside of the seat, in the orientation shown. Apply firm and even pressure to the magnet to ensure a good bond is achieved. Secure using the 8 mm self-tapping screws provided. Tighten to **1 Nm**.

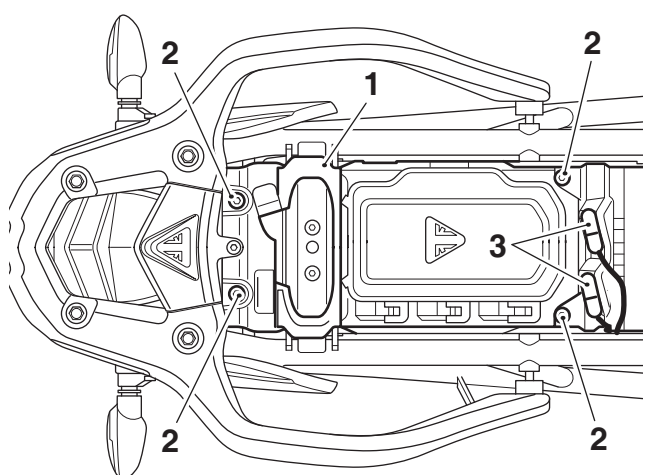


1. Seat base
2. Reed-switch magnet
3. Self-tapping screws, 8 mm

Alarm Unit Fitment

Tiger 900 GT, Tiger 900 GT (LRH), Tiger 900 GT Pro, Tiger 900 GT Aragon Edition, Tiger 900 Rally, Tiger 900 Rally Pro, Tiger 900 Rally Aragon Edition

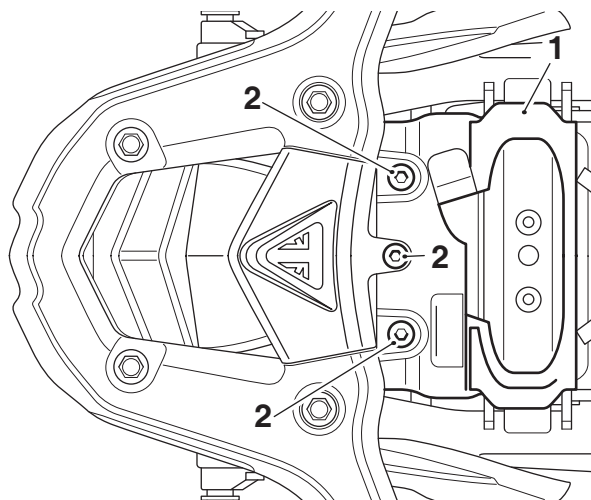
4. Remove the phone tray from the motorcycle. Retain fixings and phone tray for reuse. In order to remove phone tray fully, disconnect USB connector and unclip the heated seat connectors.



1. Phone tray
2. Fixings
3. Heated seat connectors

Tiger 900, Tiger 850 Sport Models Only

5. Remove inner mudguard moulding. Retain the moulding and fixings for reuse.



1. Inner mudguard moulding
2. Fixings

All Models

6. Remove the rear rack as described in the Service Manual. Retain all fixings for reuse.



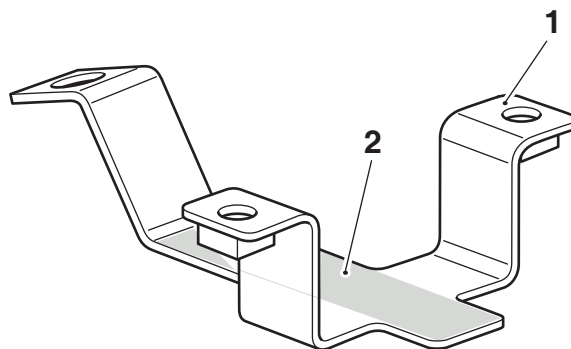
Caution

When fitting self-adhesive parts, care must be taken to ensure positioning is correct and accurate. Once the adhesive has been attached to the mounting surface, there is no satisfactory method of removal or re-positioning if incorrectly aligned. Initial bonding is instant, full bonding is achieved after 72 hours.

Note:

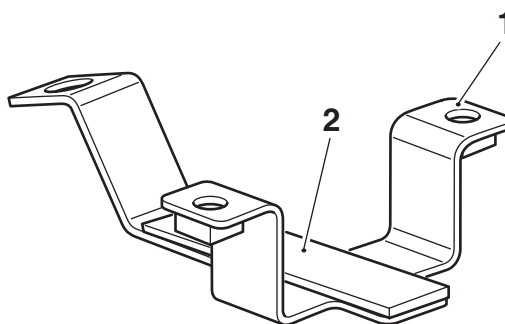
- Read the warning notices printed on the cleaning wipe packet in the fitting kit.
- The surface to which the foam pad is affixed must be clean and dry to ensure that the adhesive has a sound base to adhere to. Use the cleaning wipe supplied for this purpose.

7. Collect the alarm bracket from the kit and clean the area shown below.



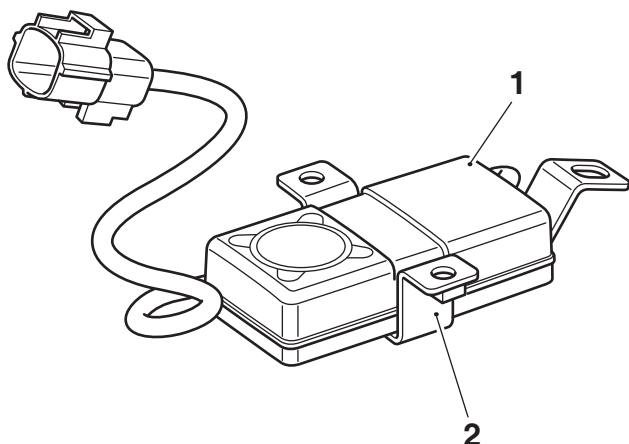
1. Alarm bracket
2. Cleaning area

8. Peel off the backing strip from the foam pad.
9. Fit the foam pad onto the alarm bracket in the position shown and apply firm and even pressure to ensure a good bond is achieved.



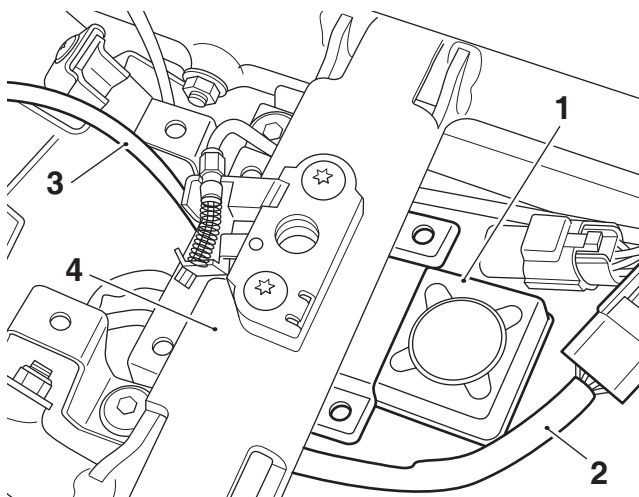
1. Alarm bracket
2. Foam pad

10. Collect the alarm unit and position it onto alarm bracket in orientation shown.



1. Alarm unit
2. Alarm bracket

11. Feed the alarm and alarm bracket under the seat bridge with the alarm unit harness positioned towards the front of the motorcycle and the reed-switch connector towards the rear of the motorcycle, as shown.



1. Alarm unit
2. Alarm harness
3. Alarm reed-switch harness
4. Seat bridge



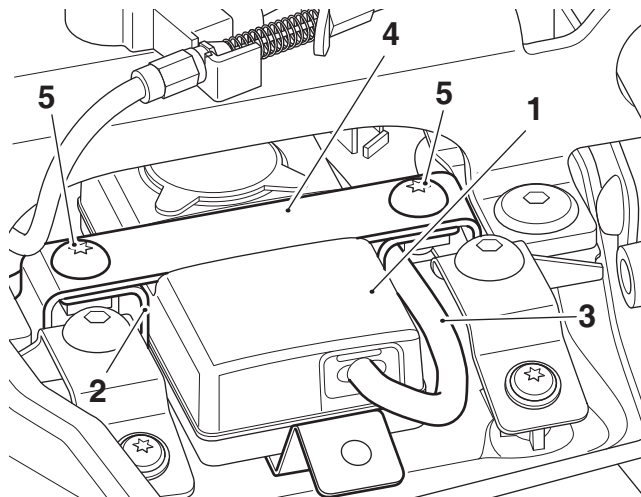
Caution

A wiring harness which becomes trapped or kinked during installation, or general motorcycle operation, may result in wiring harness damage and electrical malfunctions.

Note:

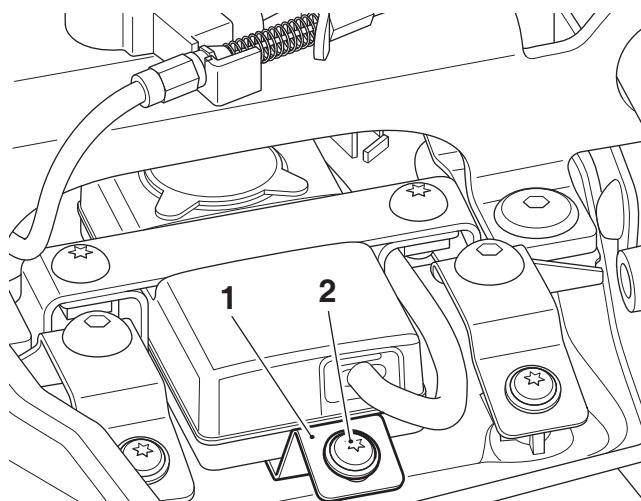
- The illustrations for steps 12 and 13 show the rear bodywork removed for clarity.

12. Position the alarm bracket below the rear mudguard bracket as shown. Collect the two M6 x 12 mm fixings from the kit and secure the alarm bracket to the rear mudguard bracket. Do not fully tighten the fixings at this stage. Note: the alarm harness is routed alongside the alarm unit as shown.



1. Alarm unit
2. Alarm bracket
3. Alarm harness
4. Rear mudguard bracket
5. Fixings, M6 x 12 mm

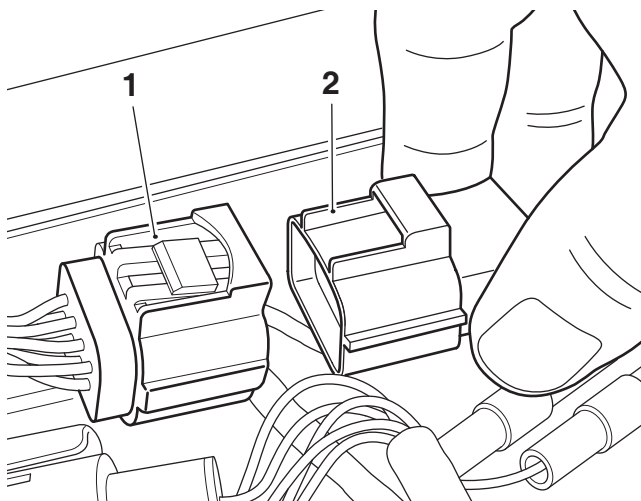
13. Fit the 11 mm self-tapping screw from the kit to the alarm bracket rear fixing position into the rear mudguard. Tighten to **1 Nm**.



1. Alarm bracket
2. Self-tapping screw, 11 mm

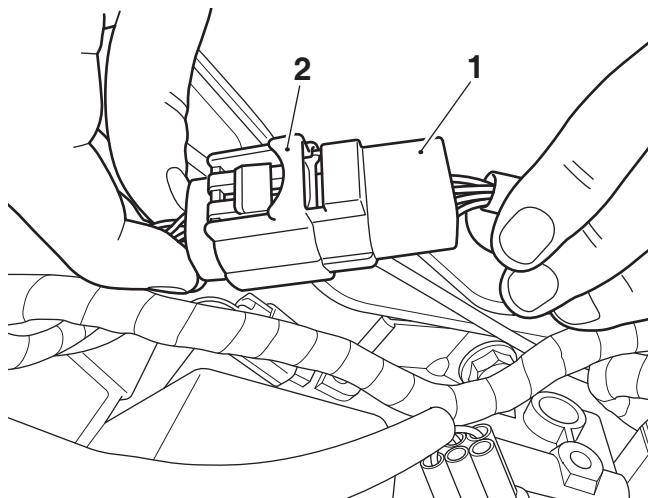
14. Tighten the M6 x 12 mm fixings to **12 Nm**.

15. Locate the alarm connector on the main wiring harness which is positioned on the right hand side of the motorcycle. Remove the blanking plug from the alarm connector. Retain the blanking plug for reuse if the motorcycle is to be returned to its original condition.



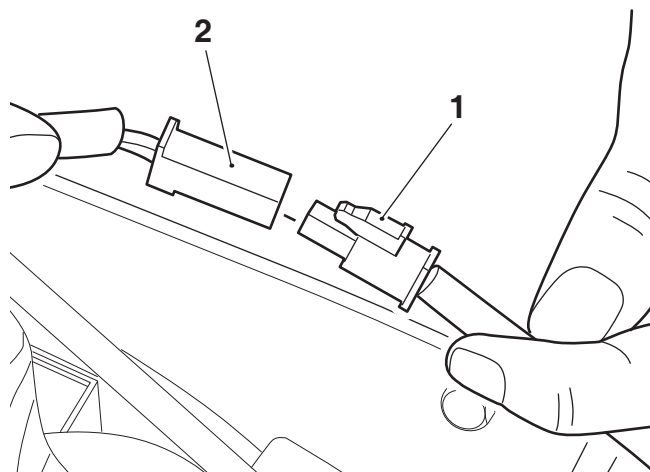
1. Alarm connector
2. Blanking plug

16. Connect the alarm unit wiring harness connector to the main wiring harness connector.



1. Alarm unit harness connector
2. Main wiring harness connector

17. Collect the reed-switch from the kit and connect the reed-switch wiring connector to the alarm unit wiring harness connector.



1. Reed-switch wiring connector
2. Alarm unit wiring connector

18. Refit the rear rack with the original fixings, as described in the Service Manual.

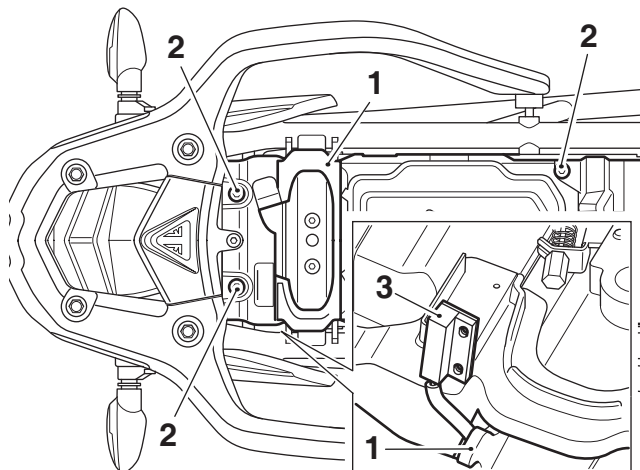


Caution

A wiring harness which becomes trapped or kinked during installation, or general motorcycle operation, may result in wiring harness damage and electrical malfunctions.

Tiger 900 GT, Tiger 900 GT (LRH), Tiger 900 GT Pro, Tiger 900 GT Aragon Edition, Tiger 900 Rally, Tiger 900 Rally Pro, Tiger 900 Rally Aragon Edition

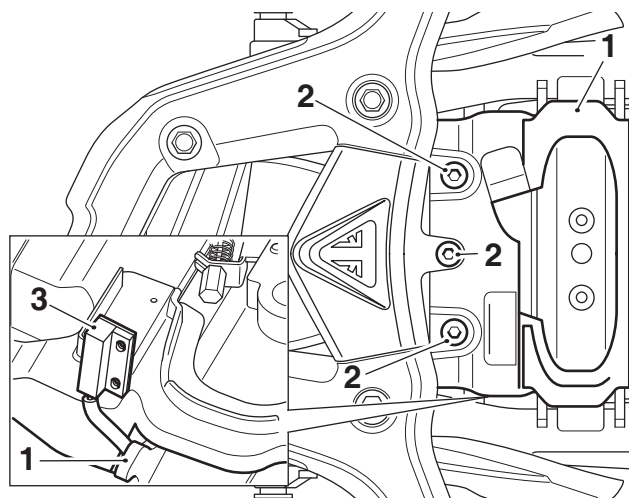
19. Reconnect the USB connector and refit the phone tray with the original fixings ensuring the reed-switch harness is routed through the right hand side of the phone tray in the location shown below. Tighten the fixings to **3 Nm**. Clip the heated seat connectors to the phone tray.



1. Phone tray
2. Fixings
3. Reed-switch harness

Tiger 900, Tiger 850 Sport Models only

20. Refit inner mudguard moulding with the original fixings ensuring the reed-switch harness is routed through the right hand side of the moulding in the location shown below. Tighten the fixings to **3 Nm**.



1. Inner mudguard moulding
2. Fixings
3. Reed-switch harness

All Models



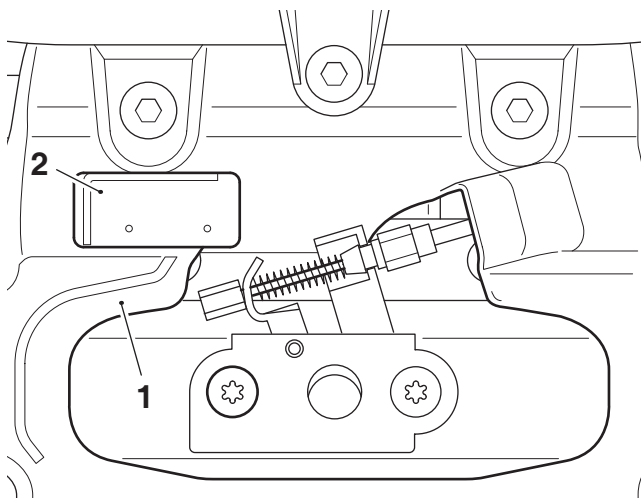
Caution

When fitting self-adhesive parts, care must be taken to ensure positioning is correct and accurate. Once the adhesive has been attached to the mounting surface, there is no satisfactory method of removal or re-positioning if incorrectly aligned. Initial bonding is instant, full bonding is achieved after 72 hours.

Note:

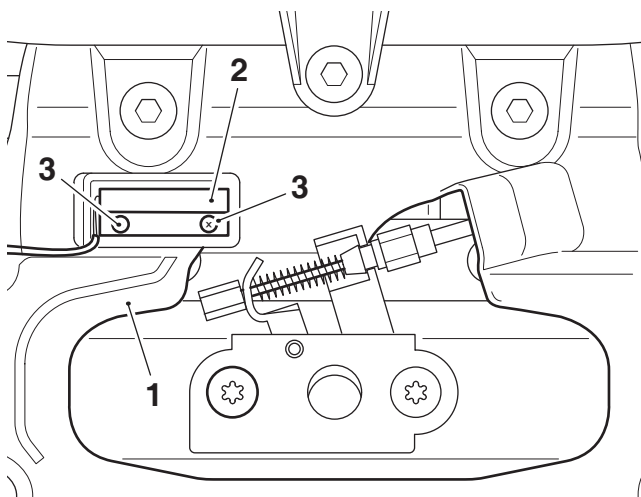
- Read the warning notices printed on the cleaning wipe packet in the fitting kit.
- The surface to which the reed-switch is affixed must be clean and dry to ensure that the adhesive has a sound base to adhere to. Use the cleaning wipe supplied for this purpose.

21. Clean the reed-switch mounting area on the phone tray or inner mudguard moulding, depending on model.



1. Phone tray shown
2. Cleaning area

22. Peel off the backing strip from the adhesive pad on the reed-switch.
23. Align the reed-switch to the fixing holes in the phone tray (inner mudguard moulding for Tiger 900, Tiger 850 Sport models), in the orientation shown. Apply firm and even pressure to the reed-switch to ensure a good bond is achieved. Secure using the 8 mm self-tapping screws from the kit, tighten to **1 Nm**.



1. Phone tray shown
2. Reed-switch
3. Self-tapping screws, 8 mm

24. Reconnect the battery, as described in the Service manual.
25. Refit the rider and passenger seats, as described in the Service Manual and check all the functions of the alarm, as detailed in the User Guide.

Note:

- The alarm unit is protected by fuse number 9 (5 Amp.) in the motorcycle fuse box.

Post Installation Checks

Check all the functions of the alarm, as described in the User Guide.

The checks and adjustments will reduce the possibility of false alarm activation.

Installation Certificate

The installation certificate is issued by the Triumph dealer and can be used as certification for UK insurance policies. Dealer to visit the English language website: www.TriumphProtectPlus.com

The dealer should click the link to 'Apply for Dealer Access' when visiting the website for the first time.

The installation certificate will be emailed to the customer. The certificate must be retained by the customer as proof of alarm fitment.



Warning

Never ride an accessory equipped motorcycle at speeds above 80 mph (130 km/h).

The presence of accessories will cause changes in the stability and handling of the motorcycle. Failure to allow for changes in motorcycle stability may lead to loss of control or an accident.

Remember that the 80 mph (130 km/h) limit will be reduced by the fitting of non-approved accessories, incorrect loading, worn tyres, overall motorcycle condition and poor road or weather conditions.



Warning

The motorcycle must not be operated above the legal road speed limit except in closed-course conditions.



Warning

Only operate this Triumph motorcycle at high speed in closed-course, on-road competition or on closed-course racetracks. High-speed operation should only be attempted by riders who have been instructed in the techniques necessary for high-speed riding and are familiar with the motorcycle's characteristics in all conditions.

High-speed operation in any other circumstances is dangerous and will lead to loss of motorcycle control and an accident.