



Accessory Fitting Instructions

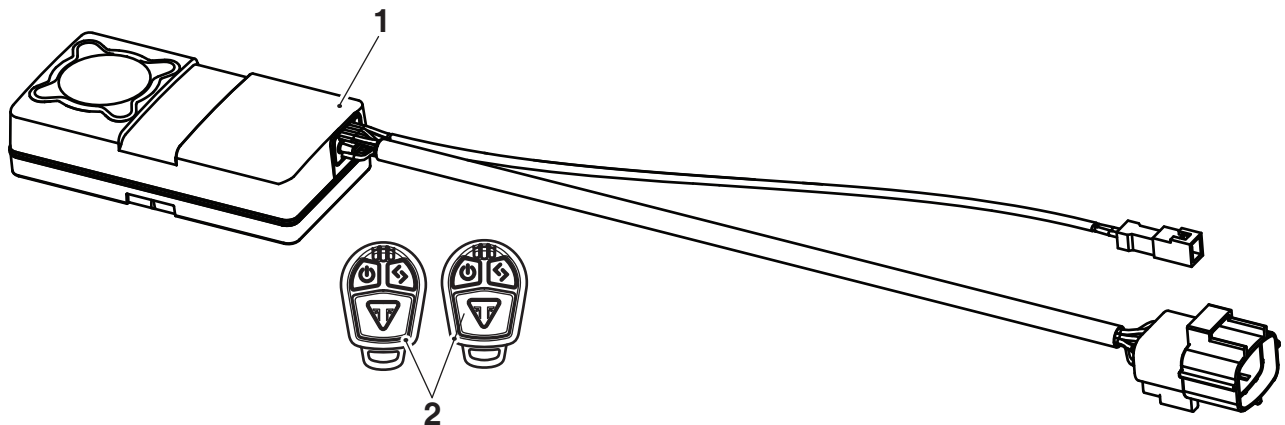
Alarm Kit	
Kit Number	Models Affected
A9800100	Trident from VIN AC6898
To be used with the alarm fitting kit listed below.	
Alarm Fitting Kit	
Kit Number	Models Affected
A9800094	Trident from VIN AC6898

Thank you for choosing this Triumph genuine accessory kit. This accessory kit is the product of Triumph's use of proven engineering, exhaustive testing, and continuous striving for superior reliability, safety and performance.

Completely read all of these instructions before commencing the installation of the accessory kit in order to become thoroughly familiar with the kit's features and the installation process.

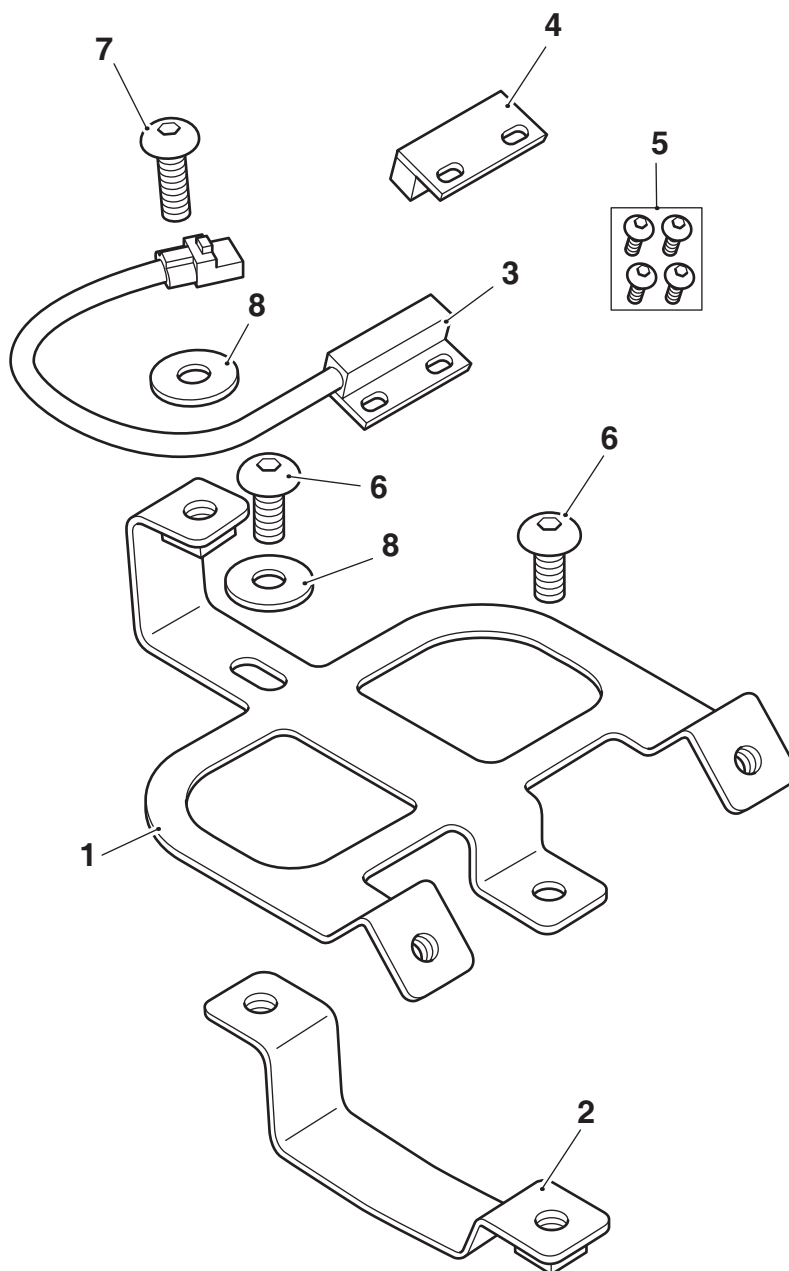
These instructions should be considered a permanent part of your accessory kit, and should remain with it even if your accessory equipped motorcycle is subsequently sold.

Parts Supplied: A9800100



1. Alarm unit	1 off	3. Quick reference guide (not shown)	1 off
2. Key fob	2 off		

Parts Supplied: A9800094



1. Bracket, upper	1 off	6. Fixing, M6 x 12 mm (encapsulated)	2 off
2. Bracket, lower	1 off	7. Fixing, M6 x 16 mm (encapsulated)	1 off
3. Reed-switch	1 off	8. Washer, M6	2 off
4. Reed-switch magnet	1 off	9. Cleaning wipe (not shown)	1 off
5. Self-tapping screw (not used)	4 off		

 **Warning**

Fit only genuine Triumph accessories to those models approved by Triumph as listed in the associated Triumph fitting instructions. The accessory kits covered in this instruction are designed for use on specific models of Triumph motorcycle. The accessory kits and the models applicable are listed at the start of the instruction. They should never be fitted to any other Triumph model or to any other manufacturer's motorcycle. Fitting an accessory kit to a Triumph model not listed, or to any other manufacturer's motorcycle will affect the performance, stability and handling of the motorcycle. This may affect the rider's ability to control the motorcycle and could result in an accident causing severe injuries or death.

 **Warning**

Always have Triumph approved parts, accessories and conversions fitted by a trained technician of an authorised Triumph dealer. The fitment of parts, accessories and conversions by a technician who is not of an authorised Triumph dealer may affect the handling, stability or other aspects of the motorcycle's operation which may result in loss of motorcycle control and an accident.

 **Warning**

A torque wrench of known accurate calibration must be used when fitting this accessory kit. Failure to tighten any of the fasteners to the correct torque specification may result in loss of motorcycle control and an accident.

 **Warning**

Make sure the motorcycle is supported. A correctly supported motorcycle will help prevent it from falling. An unstable motorcycle may fall, causing injury to the operator or damage to the motorcycle.

 **Warning**

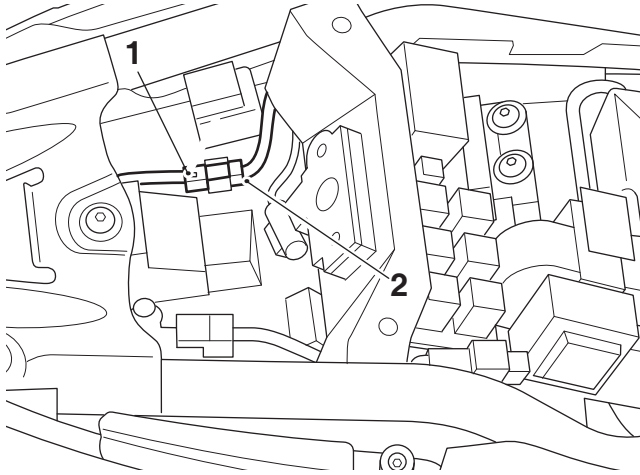
Prolonged storage of the machine with the alarm armed will result in battery drain. Excessive battery drain will cause permanent damage to the battery. The machine should be connected to an appropriate battery conditioner to maintain good battery condition.

Note:

- Triumph offers a broad range of approved genuine accessories for your motorcycle. **We cannot therefore cover all possible equipment variations in these instructions. For removal and installation of Triumph Genuine Accessories, always refer to the instructions supplied with the respective accessory kit. To obtain additional copies of any Triumph accessory instructions, visit www.triumphinstructions.com or contact your authorised Triumph dealer.**
 - **An alarm user guide is available online. Please visit: www.triumphinstructions.com User Guide: 9800100.**
 - **Power supply voltage range - 12 volt DC negative earth.**
 - **System current consumption <2.5 mA in armed condition.**
 - **Once the alarm unit has been fitted, it will become an integral part of the motorcycle and cannot be removed.**
 - **Completely read all of the instructions before commencing the installation and set up of the accessory kit in order to become thoroughly familiar with the kit's features and the installation process.**
 - **Prior to installation, record the serial number from the underside of the alarm unit on the alarm installation certificate.**
1. Remove the seat, as described in the Service Manual.
 2. Disconnect the battery as described in the Service Manual.

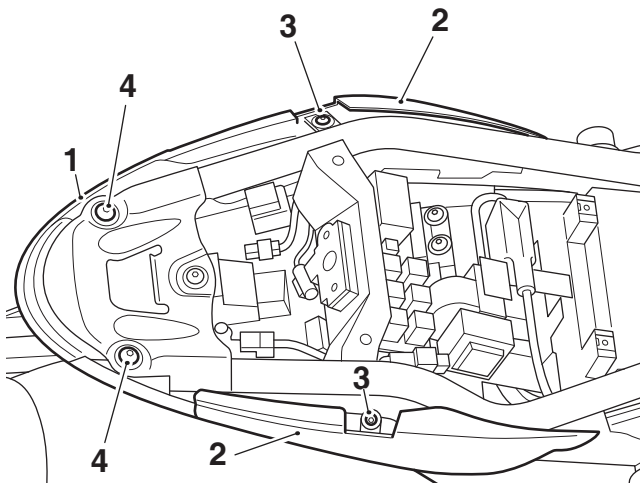
Alarm Unit Fitment

3. Disconnect the rear light harness connector from the main wiring harness connector.



1. Rear light harness connector
2. Main harness connector

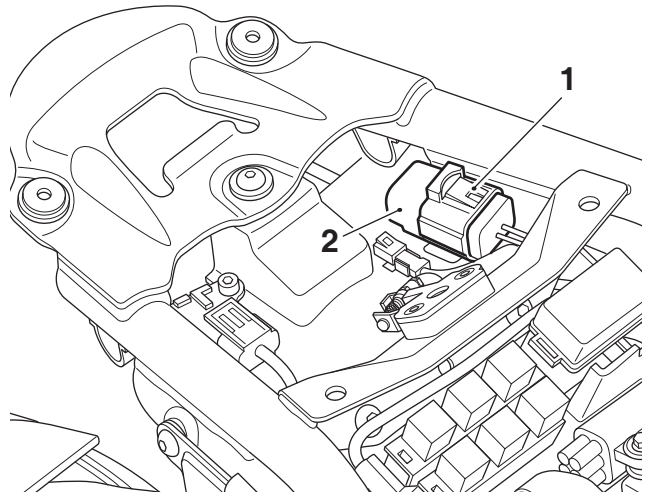
4. Remove the two rear body work plastic rivets that secure the under tray infill panels to the under tray mounting brackets. Remove the two undertray fixings, retain the fixings for reuse.



1. Undertray moulding
2. Undertray infill panels
3. Plastic rivets
4. Fixings

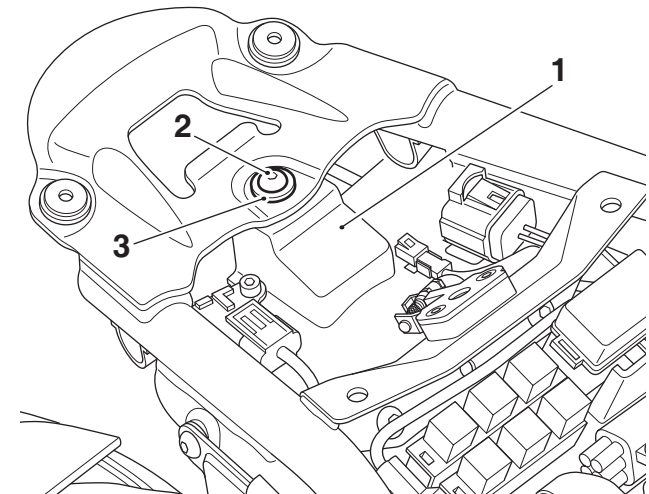
5. Carefully remove the undertray and rear light assembly by pulling down slightly and rearwards off the rubber grommets on the left hand and right hand mounting brackets. Note, the infill panels will deflect around the frame slightly.

6. Remove the blanking plug from the alarm connector. Retain the blanking plug for reuse if the motorcycle is to be returned to its original condition.



1. Alarm connector
2. Blanking plug

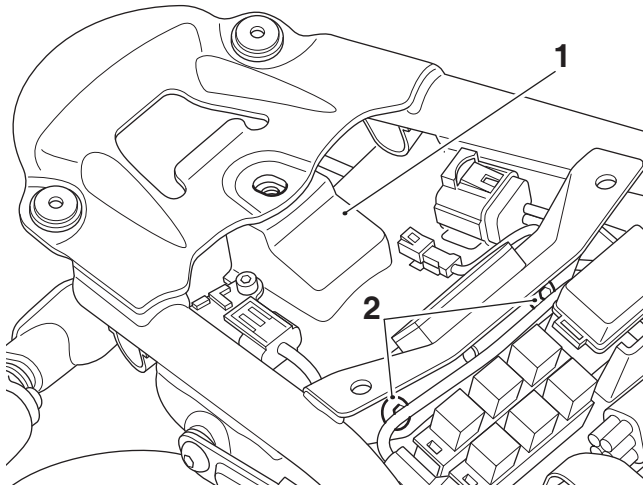
7. Remove the rear battery tray moulding fixing, washer and captive nut. Retain the fixing, washer and captive nut for reuse if the motorcycle is to be returned to its original condition.



1. Battery tray moulding
2. Fixing
3. Washer

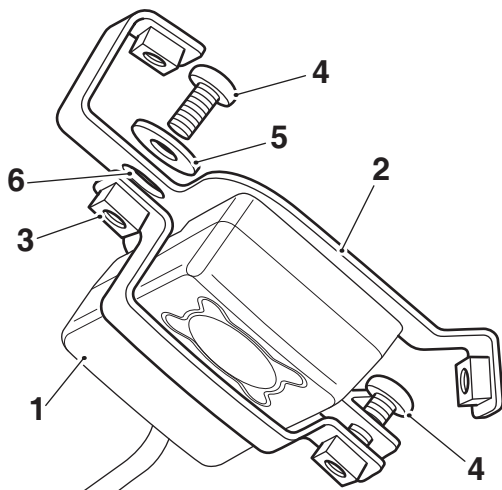
Note:

- **It may be necessary to move the fuse box and main harness aside to gain access to the battery tray moulding fixings.**
8. Remove the two battery tray moulding fixings shown below. Remove the two captive nuts from the battery tray. Retain the fixings for reuse. Retain the captive nuts for reuse if the motorcycle is to be returned to its original condition.



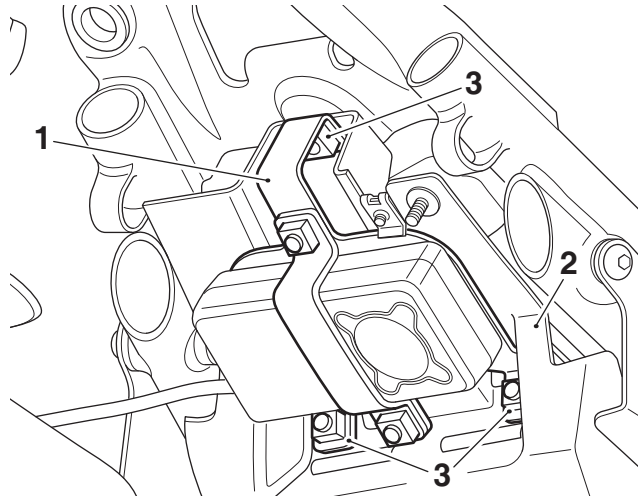
1. Battery tray moulding
2. Fixings

9. Position the alarm unit between the upper and lower brackets from the kit, in the orientation shown. Fit the two M6 x 12 mm fixings with one of the M6 washers at the slotted hole location in the upper bracket, as shown. Tighten the fixings to **7 Nm**.



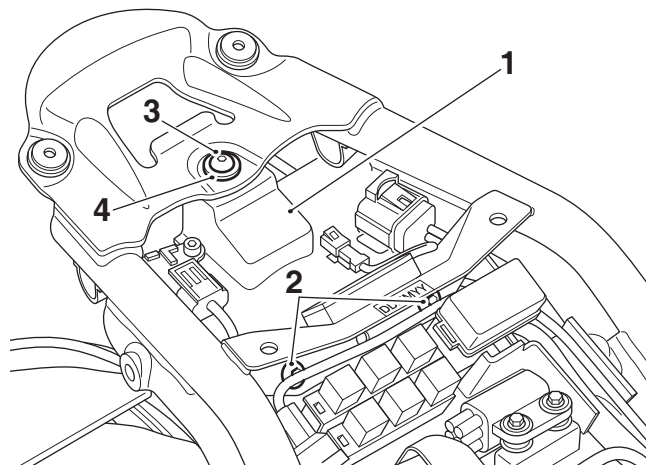
1. Alarm unit
2. Upper bracket
3. Lower bracket
4. Fixings, M6 x 12 mm
5. Washer, M6
6. Slotted hole

10. Position the alarm and bracket assembly to the underside of the battery tray moulding, in the orientation shown. Align the upper bracket with the three battery tray fixing positions.



1. Alarm and bracket assembly
2. Battery tray moulding
3. Fixing positions

11. Refit the two original battery tray moulding fixings and the M6 x 16 mm fixing and one of the M6 washers from the kit, as shown below. Tighten the fixings to **7 Nm**.

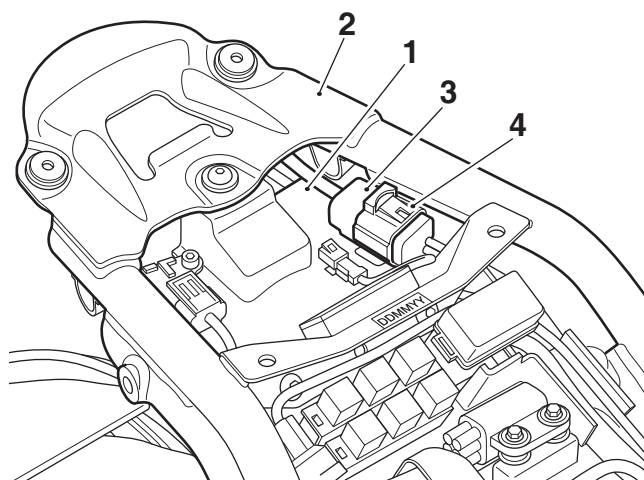


1. Battery tray moulding
2. Original fixings
3. Fixing, M6 x 16 mm
4. Washer, M6

Note:

- **If moved aside at step 8, refit the fuse box to its original location.**

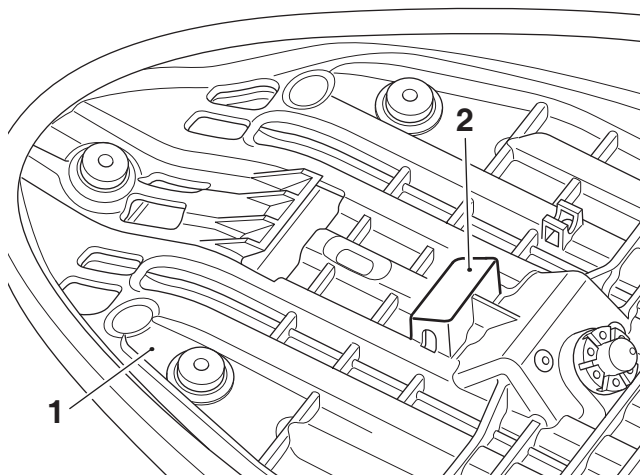
- Route the alarm unit harness connector through the gap between the frame and the battery tray moulding on the left side of the motorcycle and connect to the main wiring harness alarm connector, as shown.



- Battery tray moulding
- Motorcycle frame
- Alarm unit harness connector
- Main wiring harness alarm connector

Reed-Switch Magnet Fitment

- Place the seat on a clean non-abrasive surface and locate the reed-switch magnet mounting area on the underside of the seat.



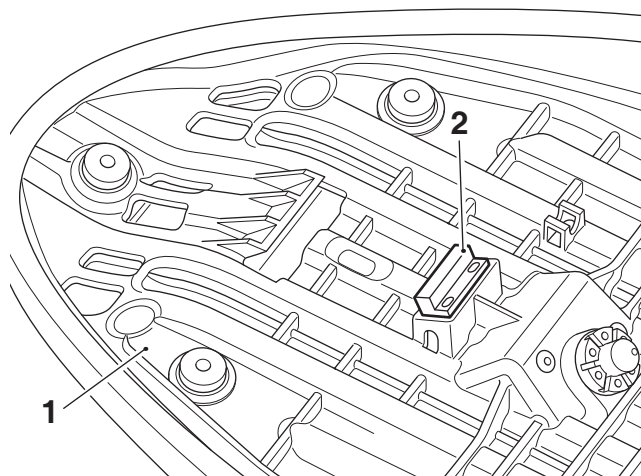
- Seat base
- Mounting area, reed-switch magnet

Caution

When fitting self-adhesive parts, care must be taken to make sure positioning is correct and accurate. Once the adhesive has been attached to the mounting surface, there is no satisfactory method of removal or re-positioning if incorrectly aligned. Initial bonding is instant, full bonding is achieved after 72 hours.

Note:

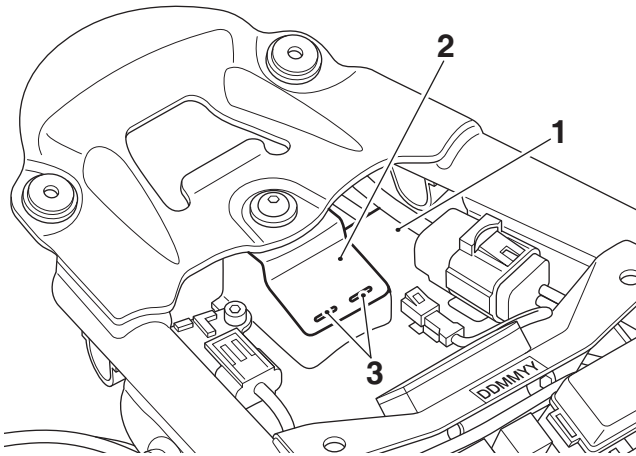
- Read the warning notices printed on the cleaning wipe packet in the fitting kit.
 - The surface to which the reed-switch magnet is affixed must be clean and dry to make sure that the adhesive has a sound base to adhere to. Use the cleaning wipe supplied for this purpose.
- Peel off the backing strip from the adhesive pad on the reed-switch magnet.
 - Position the reed-switch magnet onto the mounting area on the underside of the seat, in the orientation shown. Apply firm and even pressure to the magnet to make sure a good bond is achieved.



- Seat base
- Reed-switch magnet

Reed-Switch Fitment

4. Locate the reed-switch mounting area on the battery tray moulding. Note the location pips.



1. Battery tray moulding
2. Mounting area, reed-switch
3. Location pips



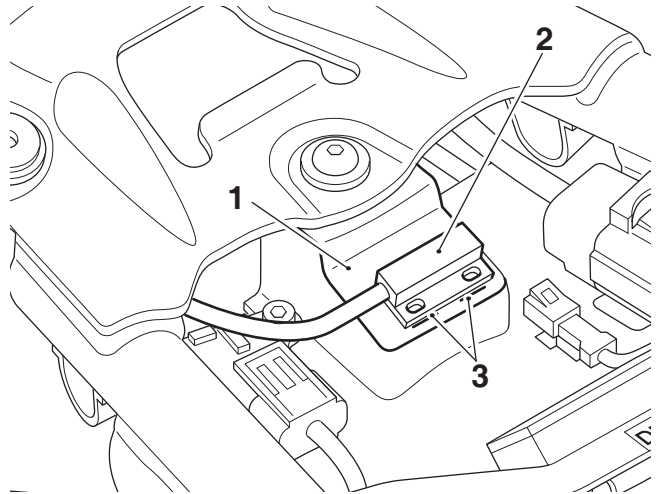
Caution

When fitting self-adhesive parts, care must be taken to make sure positioning is correct and accurate. Once the adhesive has been attached to the mounting surface, there is no satisfactory method of removal or re-positioning if incorrectly aligned. Initial bonding is instant, full bonding is achieved after 72 hours.

Note:

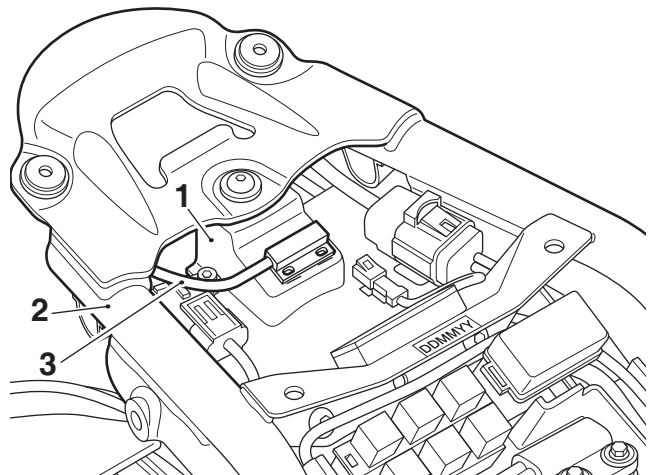
- Read the warning notices printed on the cleaning wipe packet in the fitting kit.
 - The surface to which the reed-switch magnet is affixed must be clean and dry to make sure that the adhesive has a sound base to adhere to. Use the cleaning wipe supplied for this purpose.
5. Peel off the backing strip from the adhesive pad on the reed-switch.

6. Attach the reed-switch to the battery tray moulding, aligning it against the location pips in the orientation shown. Apply firm and even pressure to the reed-switch to make sure a good bond is achieved.



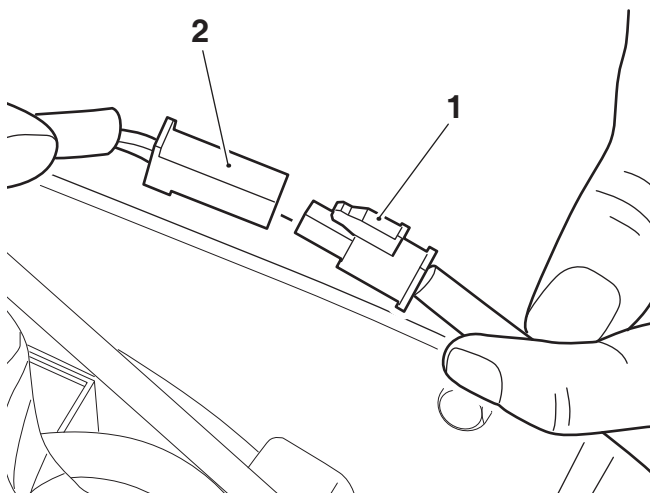
1. Battery tray moulding
2. Reed-switch
3. Location pips

7. Route the reed-switch harness through the gap between the battery tray moulding and motorcycle frame on the right hand side of the motorcycle towards the alarm unit, as shown.



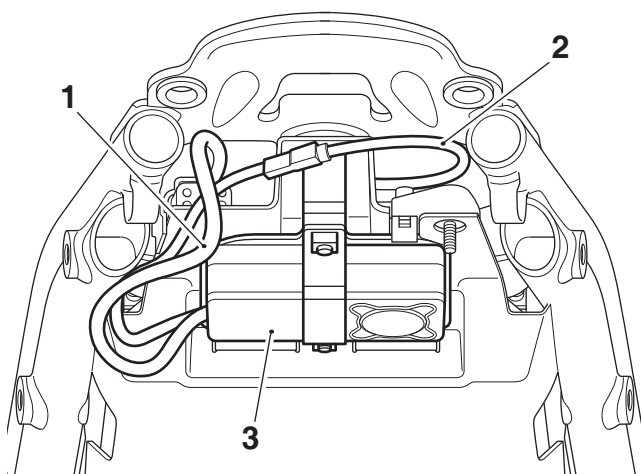
1. Battery tray moulding
2. Motorcycle frame
3. Reed-switch harness

- Connect the reed-switch wiring to the alarm unit wiring harness.



- Reed-switch wiring connector
- Alarm unit wiring connector

- Collect excess alarm wiring harness in the area next to the alarm unit, as shown.



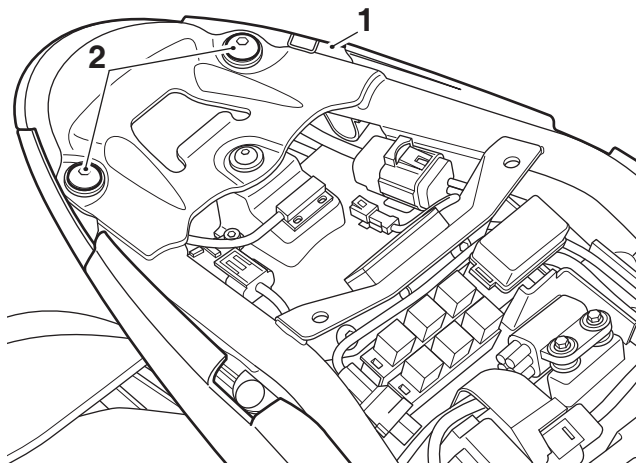
- Alarm unit wiring harness
- Reed-switch harness
- Alarm unit



Caution

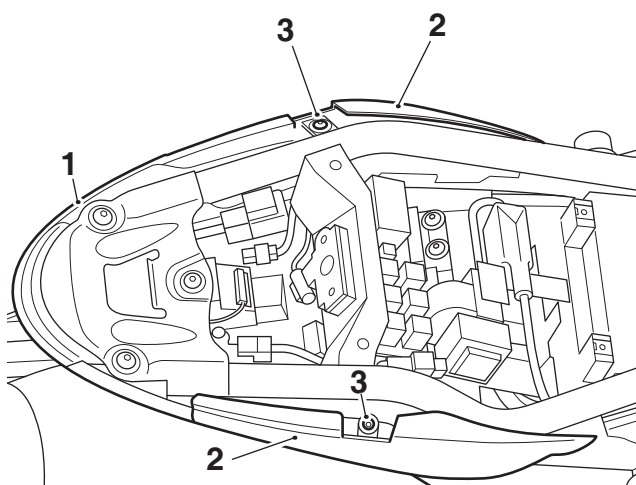
A wiring harness which becomes trapped or kinked during installation, or general motorcycle operation, may result in wiring harness damage and electrical malfunctions.

- Refit the undertray moulding and rear light assembly on to the grommets on the left hand and right hand mounting brackets, and raise the rear of the undertray into position taking care not to trap any excess alarm harness. Fit the original undertray moulding fixings. Tighten the fixings to **3 Nm**.



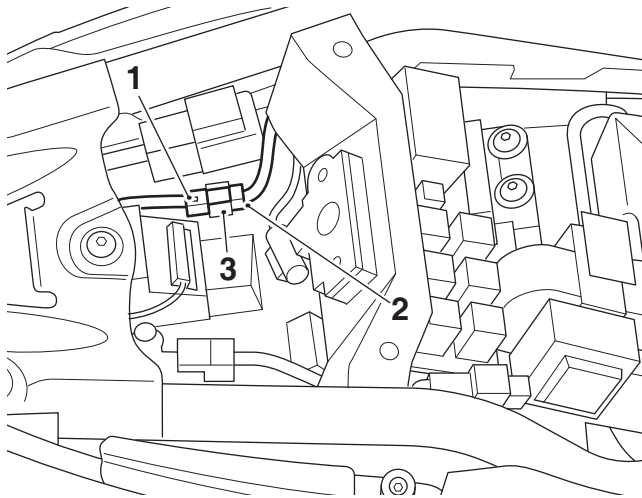
- Undertray moulding
- Fixings

- Refit the two rear body work plastic rivets that secure the under tray infill panels to the under tray mounting brackets.



- Undertray moulding
- Undertray infill panels
- Plastic rivets

12. Reconnect the rear light harness connector to the main harness connector. Make sure the rear light harness is positioned in the cable retaining clip feature as shown.



1. Rear light harness connector
2. Main harness connector
3. Cable clip

13. Reconnect the battery as described in the Service Manual.
14. Refit the seat and check all the functions of the alarm, as detailed in the user guide.

Note:

- **The alarm unit is protected by fuses number 2 and 6 in the motorcycle main fuse box.**

Notice

Before returning the motorcycle to the customer, make sure to download the latest instruments software using the current version of the Triumph diagnostic software.

Post Installation Checks

Check all the functions of the alarm, as described in the User Guide.

The checks and adjustments will reduce the possibility of false alarm activation.

Installation Certificate

The installation certificate is issued by the Triumph dealer and can be used as certification for UK insurance policies. Dealer to visit the English language website: www.TriumphProtectPlus.com

The dealer should click the link to 'Apply for Dealer Access' the first time visiting the website.

The installation certificate will be emailed to the customer. The certificate must be retained by the customer as proof of alarm fitment.



Warning

Never ride an accessory equipped motorcycle at speeds above 80 mph (130 km/h).

The presence of accessories will cause changes in the stability and handling of the motorcycle. Failure to allow for changes in motorcycle stability may result in loss of motorcycle control and an accident.

Remember that the 80 mph (130 km/h) limit will be reduced by the fitting of non-approved accessories, incorrect loading, worn tyres, overall motorcycle condition and poor road or weather conditions.



Warning

The motorcycle must not be operated above the legal road speed limit except in closed-course conditions.



Warning

Only operate this Triumph motorcycle at high speed in closed-course, on-road competition or on closed-course racetracks. High-speed operation should only be attempted by riders who have been instructed in the techniques necessary for high-speed riding and are familiar with the motorcycle's characteristics in all conditions.

High-speed operation in any other circumstances is dangerous and may lead to loss of motorcycle control and an accident.