



Accessory Fitting Instructions

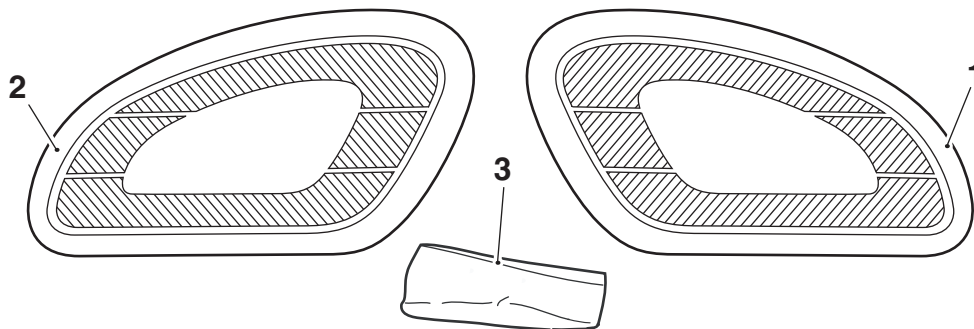
Knee Pad Kit	
Kit Number	Models Affected
A2402026 A2402054	Street Twin, Speed Twin 900, Street Cup, Bonneville T100, Bonneville T120, Speed Twin, Bonneville Bobber, Bonneville Speedmaster
A9790146	Street Scrambler, Scrambler 900

Thank you for choosing this Triumph genuine accessory kit. This accessory kit is the product of Triumph's use of proven engineering, exhaustive testing, and continuous striving for superior reliability, safety and performance.

Completely read all of these instructions before commencing the installation of the accessory kit in order to become thoroughly familiar with the kit's features and the installation process.

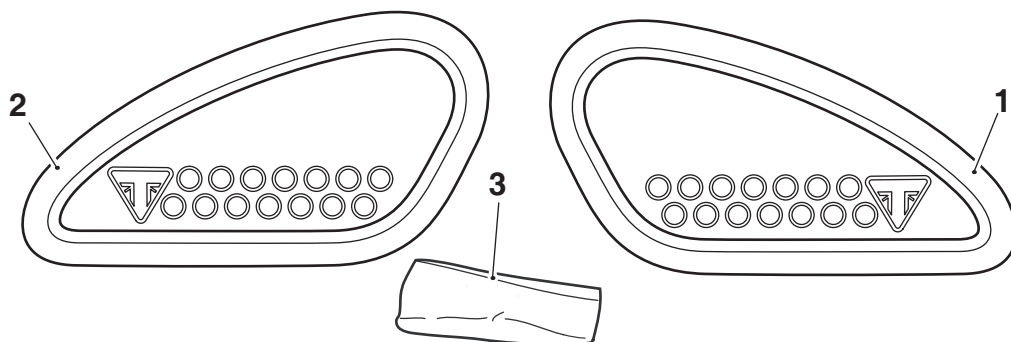
These instructions should be considered a permanent part of your accessory kit, and should remain with it even if your accessory equipped motorcycle is subsequently sold.

Parts Supplied: A2402026, A2402054



1. Knee pad, left hand	1 off	3. Cleaning wipe	1 off
2. Knee pad, right hand	1 off		

Parts Supplied: A9790146



1. Knee pad, left hand	1 off	3. Cleaning wipe	1 off
2. Knee pad, right hand	1 off		

Warning

Fit only genuine Triumph accessories to those models approved by Triumph as listed in the associated Triumph fitting instructions. The accessory kits covered in this instruction are designed for use on specific models of Triumph motorcycle. The accessory kits and the models applicable are listed at the start of the instruction. They should never be fitted to any other Triumph model or to any other manufacturer's motorcycle. Fitting an accessory kit to a Triumph model not listed, or to any other manufacturer's motorcycle will affect the performance, stability and handling of the motorcycle. This may affect the rider's ability to control the motorcycle and could result in an accident causing severe injuries or death.

Warning

Always have Triumph approved parts, accessories and conversions fitted by a trained technician of an authorised Triumph dealer. The fitment of parts, accessories and conversions by a technician who is not of an authorised Triumph dealer may affect the handling, stability or other aspects of the motorcycle's operation which may result in loss of motorcycle control and an accident.

Warning

Make sure the motorcycle is supported. A correctly supported motorcycle will help prevent it from falling. An unstable motorcycle may fall, causing injury to the operator or damage to the motorcycle

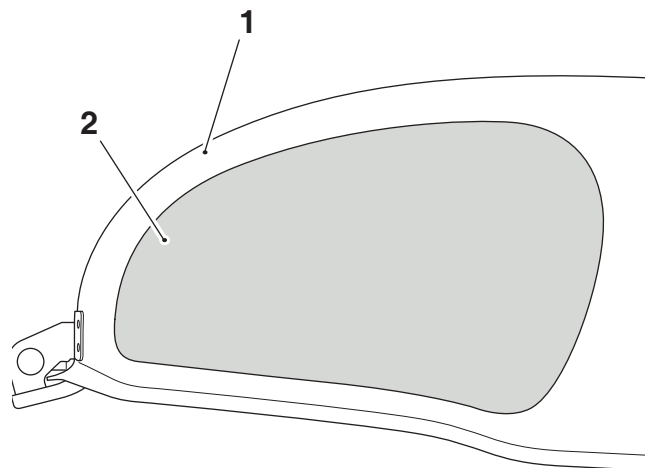
Note:

- Once the knee pads have been fitted, they will become an integral part of the fuel tank and cannot be removed.

Note:

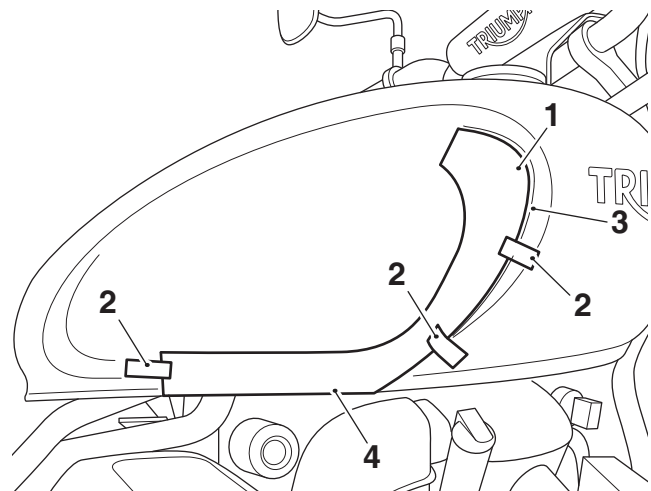
- Read the warning notices printed on the cleaning wipe packet.
- The surface to which the knee pads are affixed must be clean and dry to make sure that the adhesive has a sound base to adhere to. Use the cleaning wipe supplied for this purpose.

1. Using the cleaning wipe provided, clean the areas on the side of the fuel tank shown below.



1. Fuel tank
2. Cleaning area, right hand side shown

2. Depending on the motorcycle model, print out the corresponding template on pages 4 to 6. This template is required for correct positioning of the accessory knee pads.
3. Carefully cut out the template.
4. Attach the template to the right hand side of the fuel tank with masking tape, aligning the template with the inner recess radius and bottom edge of the fuel tank as shown. Street Scrambler shown for reference.



1. Template
2. Masking tape
3. Inner recess radius, fuel tank
4. Bottom edge, fuel tank



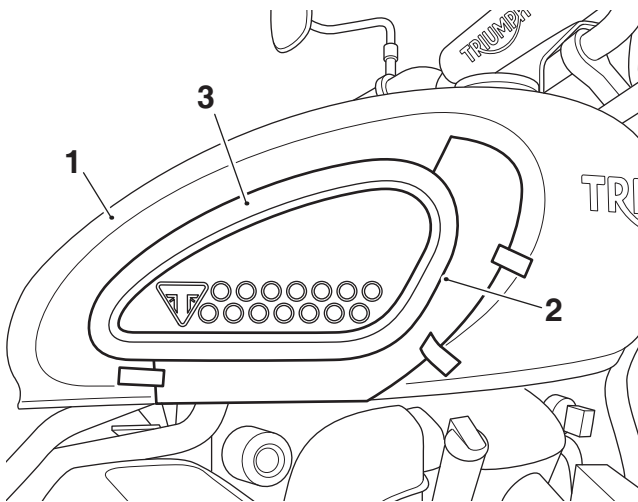
Caution

When fitting self-adhesive parts, care must be taken to make sure positioning is correct and accurate. Once the adhesive has been attached to the mounting surface, there is no satisfactory method of removal and repositioning if incorrectly aligned. Initial bonding is instant, full bonding is achieved after 72 hours.

5. Collect the right hand knee pad from the kit.

Note:

- **The minimum application temperature for the knee pad adhesive is 10°C.**
6. Peel away the adhesive backing strips from the right hand knee pad.
 7. Carefully position the right hand knee pad on to the fuel tank aligned with the inner cut out section of the template, in the orientation shown. Apply firm and even hand pressure across the whole knee pad surface for one minute to make sure a good bond is achieved. Street Scrambler shown for reference.



1. Fuel Tank

2. Alignment template, inner cut out section

3. Knee pad, right hand

8. Carefully remove the template from the fuel tank.

Note:

- **If the template becomes damaged when it is removed from the fuel tank repeat steps 2 and 3 to produce a new template.**
9. Repeat steps 4 to 8 for the left hand knee pad.



Warning

If, after fitment of this accessory kit, you have any doubt about the performance of any aspect of the motorcycle, contact an authorised Triumph dealer and do not ride the motorcycle until the authorised dealer has declared it fit for use. Riding a motorcycle when there is any doubt as to any aspect of the performance of the motorcycle may result in loss of control of the motorcycle, leading to an accident.



Warning

Only operate this Triumph motorcycle at high speed in closed-course, on-road competition or on closed-course racetracks. High-speed operation should only be attempted by riders who have been instructed in the techniques necessary for high-speed riding and are familiar with the motorcycle's characteristics in all conditions.

High-speed operation in any other circumstances is dangerous and will lead to loss of motorcycle control and an accident.



Warning

The motorcycle must not be operated above the legal road speed limit except in closed-course conditions.



