



Accessory Fitting Instructions

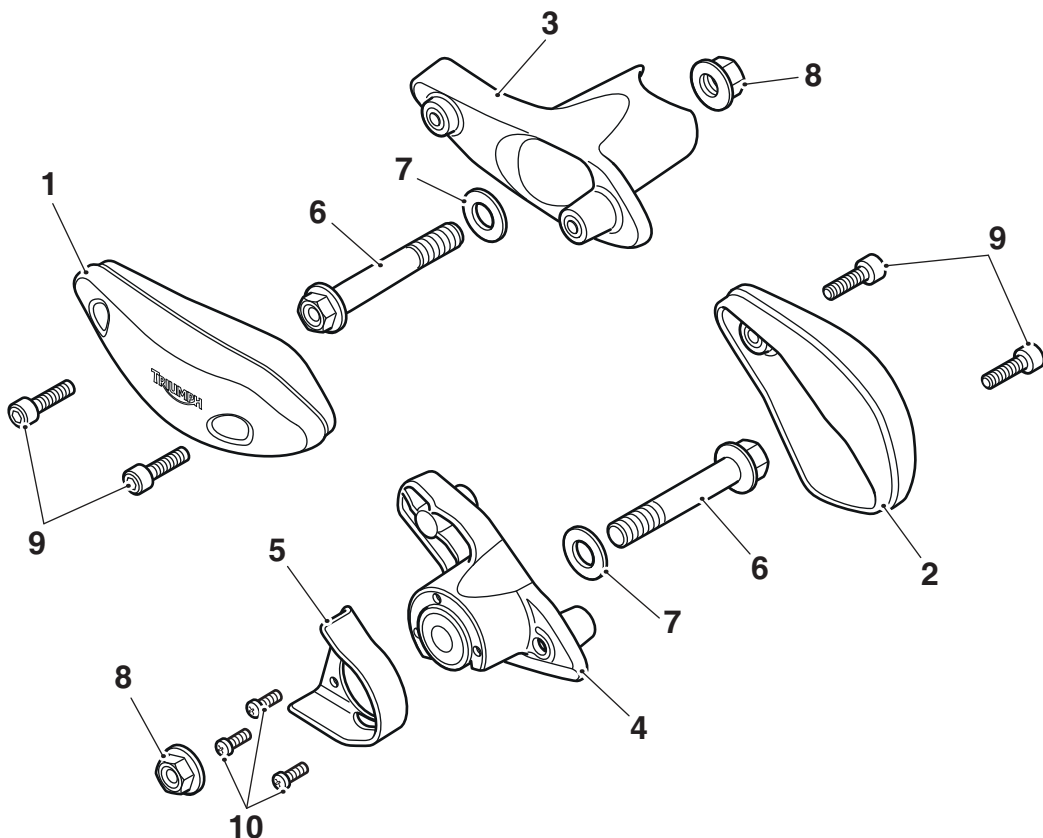
Frame Protector Kit	
Kit Number	Models Affected
A9788016	Speed Triple S, Speed Triple R, Speed Triple RS

Thank you for choosing this Triumph genuine accessory kit. This accessory kit is the product of Triumph's use of proven engineering, exhaustive testing, and continuous striving for superior reliability, safety and performance.

Completely read all of these instructions before commencing the installation of the accessory kit in order to become thoroughly familiar with the kit's features and the installation process.

These instructions should be considered a permanent part of your accessory kit, and should remain with it even if your accessory equipped motorcycle is subsequently sold.

Parts Supplied



1.	Frame protector cover, right hand	1 off	6.	Bolt, M12 x 85 mm	2 off
2.	Frame protector cover, left hand	1 off	7.	Washer, M12	2 off
3.	Frame protector support, right hand	1 off	8.	Lock nut, M12	2 off
4.	Frame protector support, left hand	1 off	9.	Screw, M6 x 25 mm	4 off
5.	Frame protector locator	1 off	10.	Screw, self-tapping	3 off

Warning

The accessory kits covered in this instruction are designed for use on specific models of Triumph motorcycle. The accessory kits and the models applicable are listed at the start of the instruction. They should not be fitted to any other Triumph model or to any other manufacturer's motorcycle. Fitting an accessory kit to a Triumph model not listed, or to any other manufacturer's motorcycle will affect the performance, stability and handling of the motorcycle. This may affect the rider's ability to control the motorcycle and could cause an accident.

Warning

Always have Triumph approved parts, accessories and conversions fitted by a trained technician of an authorised Triumph dealer. The fitment of parts, accessories and conversions by a technician who is not of an authorised Triumph dealer may affect the handling, stability or other aspects of the motorcycle's operation which may result in loss of motorcycle control and an accident.

Warning

Throughout this operation, ensure that the motorcycle is stabilised and adequately supported to prevent risk of injury from the motorcycle falling.

Warning

A torque wrench of known accurate calibration must be used when fitting this accessory kit. Failure to tighten any of the fasteners to the correct torque specification may affect motorcycle performance, handling and stability. This may result in loss of motorcycle control and an accident.

Warning

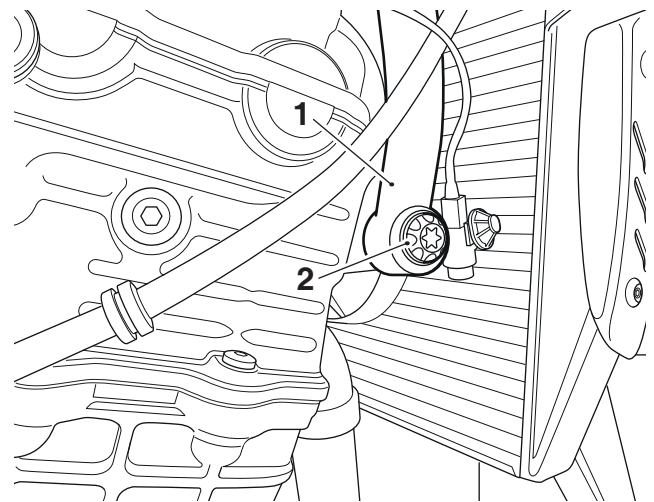
If the engine has recently been running, the exhaust system will be hot. Before working on or near the exhaust system, allow sufficient time for the system to cool, as touching any part of a hot exhaust could cause burn injuries.

Note:

- Triumph offers a broad range of approved genuine accessories for your motorcycle. We cannot therefore cover all possible equipment variations in these instructions. For removal and installation of Triumph Genuine Accessories, always refer to the instructions supplied with the respective accessory kit. To obtain additional copies of any Triumph accessory instructions, visit www.triumphinstructions.com or contact your authorised Triumph dealer.

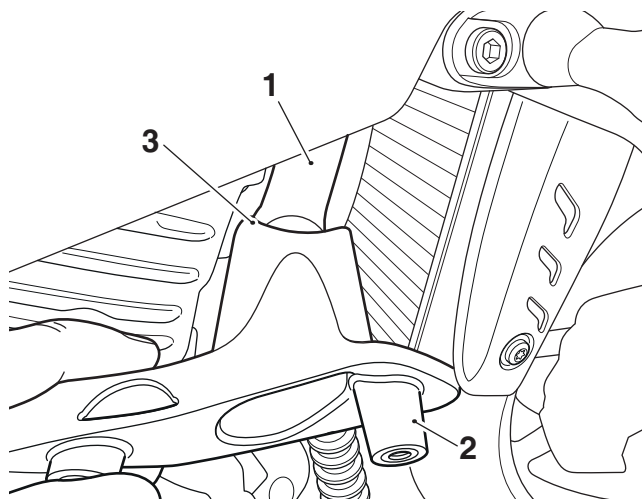
Right Hand Side

- Remove the screw and lock nut from the upper front engine mounting. Retain the screw for use if the motorcycle is to be returned to its original condition. Discard the lock nut.



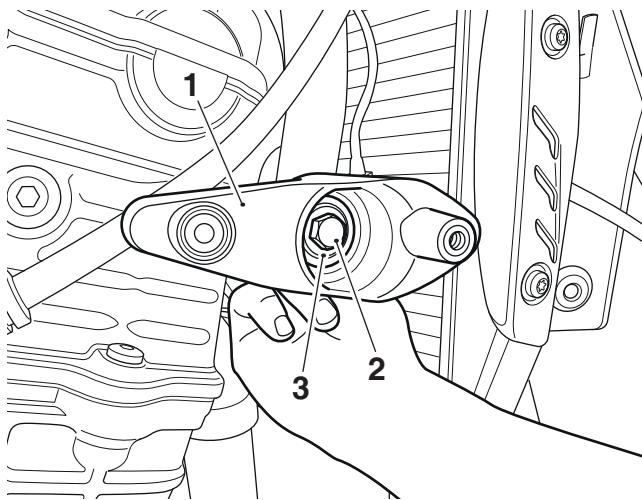
1. Front engine mounting
2. Screw

2. Fit the right hand frame protector support to align with the upper front engine mounting position on the motorcycle frame, in the orientation shown. Ensure the curved profile of the protector support locates correctly on the frame.



1. Front engine mounting
2. Frame protector support
3. Curved profile

3. Secure the frame protector support to the motorcycle frame with an M12 x 85 mm bolt, M12 washer and M12 lock nut provided in the kit.

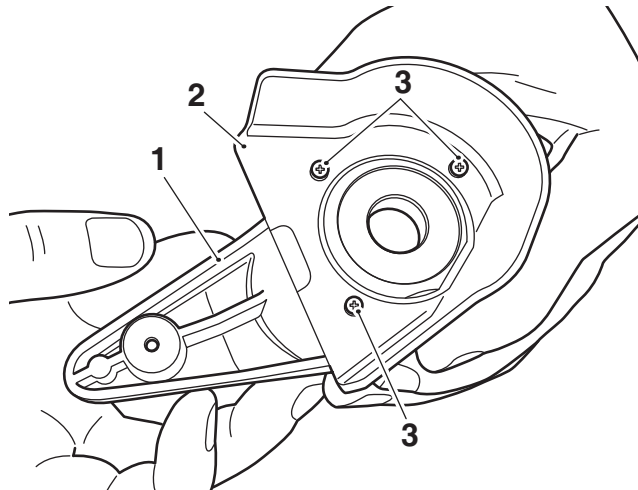


1. Frame protector support
2. Bolt, M12 x 85 mm
3. Washer, M12

4. Tighten the frame protector support fixings to **80 Nm**.

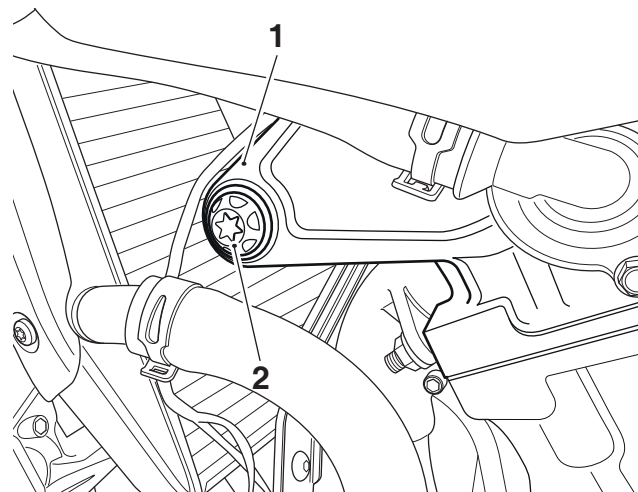
Left Hand Side

1. Collect the left hand frame protector support, frame protector locator and three self-tapping screws from the kit. Fit the frame protector locator onto the frame protector support in the orientation shown and secure with the three self-tapping screws, as shown below



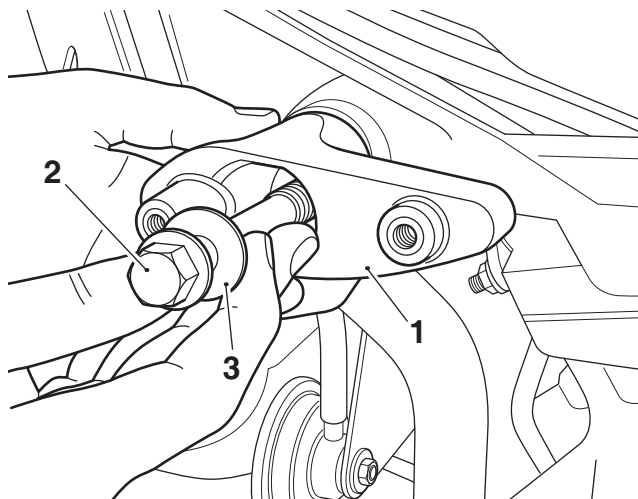
1. Frame protector support
2. Frame protector locator
3. Self-tapping screws

2. Remove the screw and lock nut from the upper front engine mounting. Retain the screw for use if the motorcycle is to be returned to its original condition. Discard the lock nut.



1. Front engine mounting
2. Screw

- Fit the frame protector support to align with the upper front engine mounting position on the motorcycle frame, in the orientation shown. Secure the frame protector support to the motorcycle frame with an M12 x 85 mm bolt, M12 washer and M12 lock nut provided in the kit.

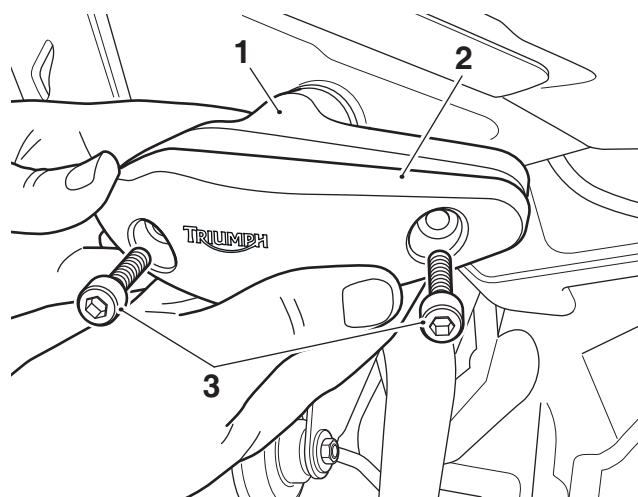


- Frame protector support
- Bolt, M12 x 85 mm
- Washer, M12

- Tighten the frame protector support fixings to **80 Nm**.

Both Sides

- Fit the frame protector covers to the frame protector supports. Ensure the covers align correctly on the supports. Retain the covers with two M6 x 25 mm screws provided. Tighten the screws to **9 Nm**.



- Frame protector support, left hand shown
- Frame protector cover, left hand shown
- Screw, M6 x 25 mm

Warning

After fitting the accessory kit the motorcycle will exhibit new handling characteristics. Operate the motorcycle in a safe area free from traffic to gain familiarity with any new characteristics. Operation of the motorcycle when not familiar with any new handling characteristics may result in loss of motorcycle control and an accident.

Warning

If, after fitting this accessory kit, you have any doubt about the performance of any aspect of the motorcycle, contact an authorised Triumph dealer and do not ride the motorcycle until the authorised dealer has declared it fit for use. Riding a motorcycle when there is any doubt as to any aspect of the performance of the motorcycle may result in loss of control of the motorcycle leading to an accident.

Warning

Never ride an accessory-equipped motorcycle at speeds above 80 mph (130 km/h).

The presence of accessories will cause changes in the stability and handling of the motorcycle. Failure to allow for changes in motorcycle stability may lead to loss of control or an accident.

Remember that the 80 mph (130 km/h) limit will be reduced by the fitting of non-approved accessories, incorrect loading, worn tyres, overall motorcycle condition and poor road or weather conditions.

Warning

The motorcycle must not be operated above the legal road speed limit except in closed-course conditions.

Warning

Only operate this Triumph motorcycle at high speed in closed-course, on-road competition or on closed-course racetracks. High-speed operation should only be attempted by riders who have been instructed in the techniques necessary for high-speed riding and are familiar with the motorcycle's characteristics in all conditions.

High-speed operation in any other circumstances is dangerous and will lead to loss of motorcycle control and an accident.