



## Accessory Fitting Instructions

Thank you for choosing this Triumph genuine accessory kit. This accessory kit is the product of Triumph's use of proven engineering, exhaustive testing, and continuous striving for superior reliability, safety and performance.

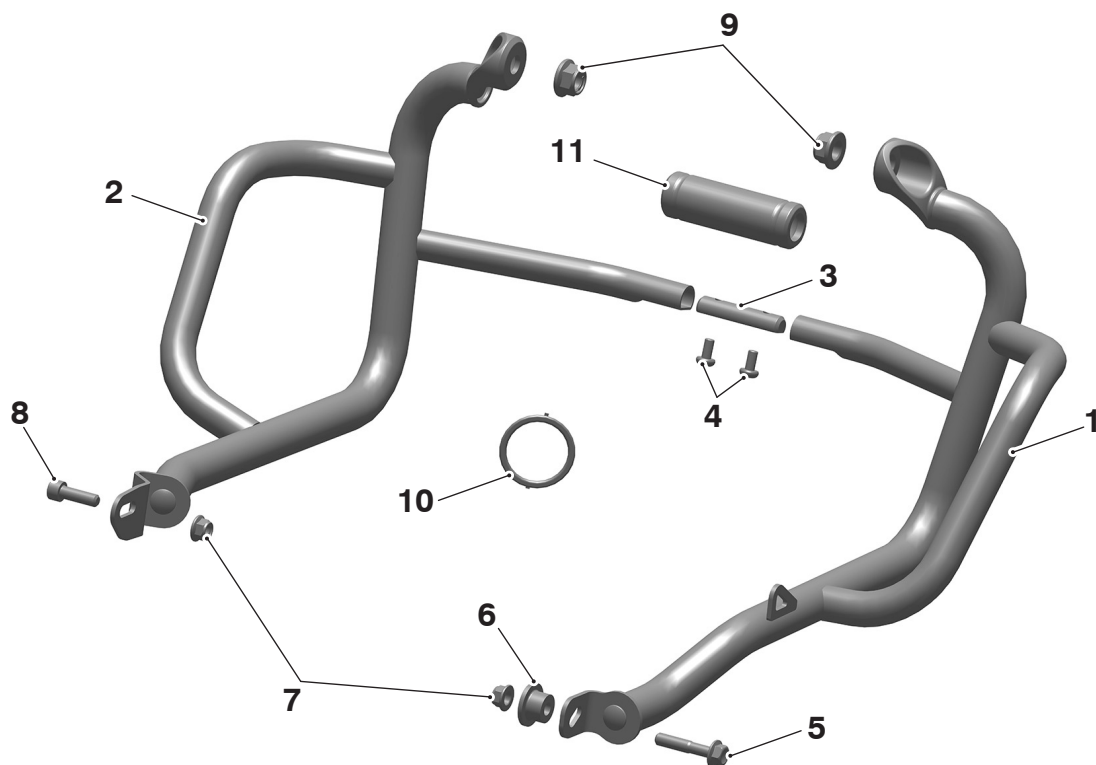
Completely read all of these instructions before commencing the installation of the accessory kit in order to become thoroughly familiar with the kit's features and the installation process.

These instructions should be considered a permanent part of your accessory kit, and should remain with it even if your accessory equipped motorcycle is subsequently sold.

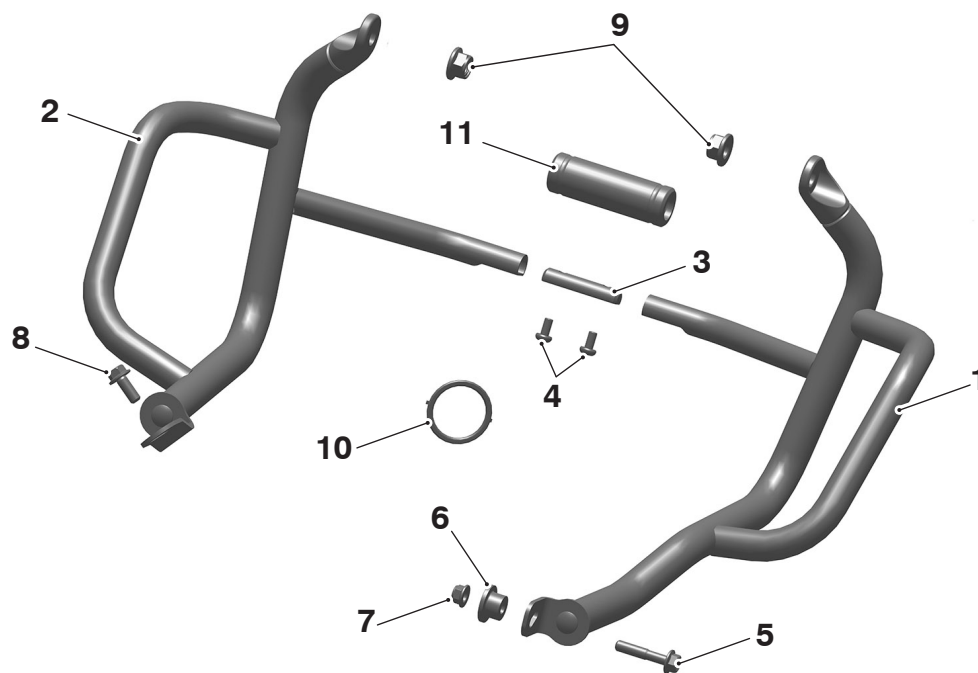
<b>Dresser Bar Kits</b>	
<b>Kit Number</b>	<b>Models</b>
<b>Dresser Bar Kit, Black</b>	
A9788025	Street Scrambler, Scrambler 900
<b>Dresser Bar Kit, Graphite</b>	
A9788026	Street Scrambler, Scrambler 900
<b>Dresser Bar Kit, Stainless Steel</b>	
A9788055	Scrambler 1200 XC to VIN AD7675, Scrambler 1200 XE to VIN AB6805
A9780119	Scrambler 1200 XC, Scrambler 1200 XE from VIN BP0885, Scrambler 1200 X

Parts supplied

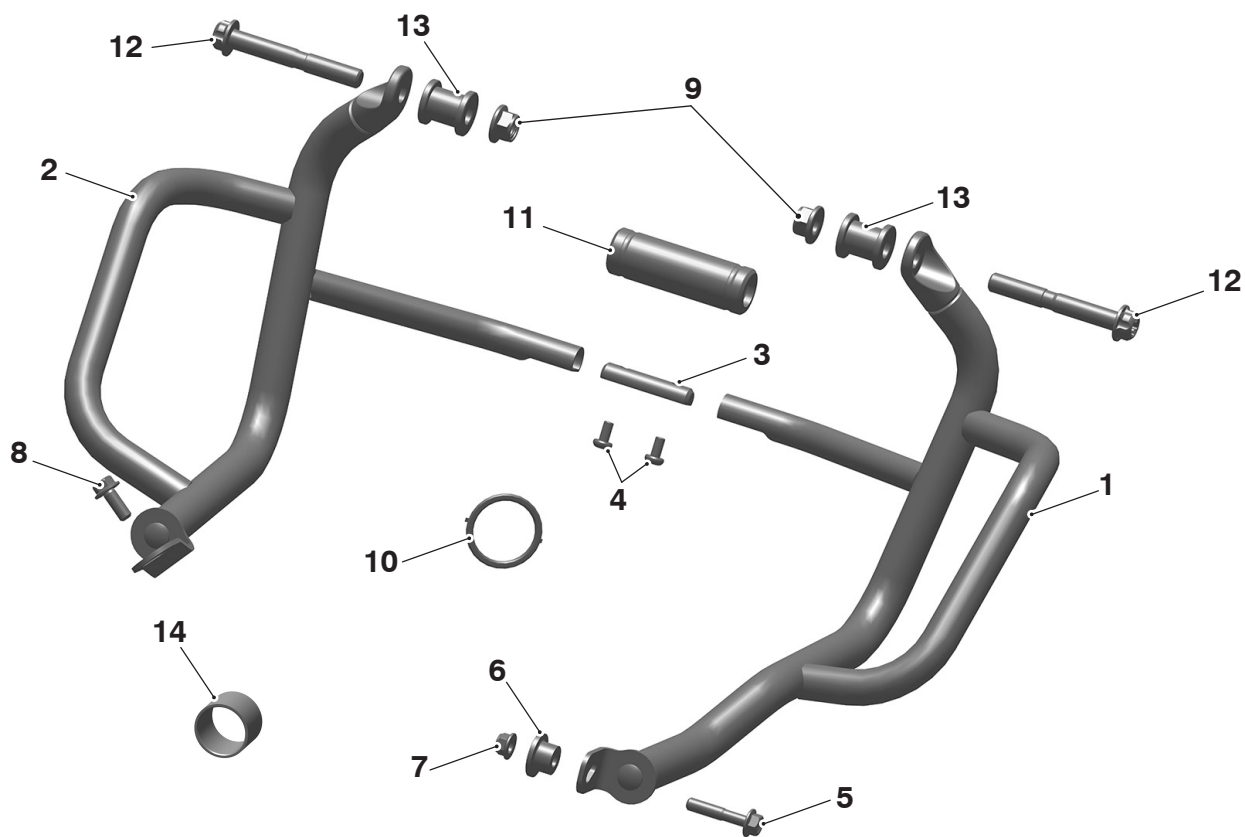
A9788025, A9788026



1. Dresser bar, right hand	1 off	7. Lock nut, M8	2 off
2. Dresser bar, left hand	1 off	8. Fixing, M8 x 25 mm	1 off
3. Insert	1 off	9. Lock nut, M12	2 off
4. Fixing, M6 x 12 mm	2 off	10. Header Gasket	1 off
5. Fixing, M8 x 40 mm	1 off	11. Rubber cover (if provided)	1 off
6. Flanged sleeve	1 off		



1. Dresser bar, right hand	1 off	7. Lock nut, M8	1 off
2. Dresser bar, left hand	1 off	8. Fixing, M8 x 20 mm	1 off
3. Insert	1 off	9. Lock nut, M12	2 off
4. Fixing, M6 x 12 mm	2 off	10. Header gasket	2 off
5. Fixing, M8 x 40 mm	1 off	11. Rubber cover	1 off
6. Flanged sleeve	1 off		



1. Dresser bar, right hand	1 off	8. Fixing, M8 x 20 mm	1 off
2. Dresser bar, left hand	1 off	9. Lock nut, M12	2 off
3. Insert	1 off	10. Header Gasket	2 off
4. Fixing, M6 x 12 mm	2 off	11. Rubber cover	1 off
5. Fixing, M8 x 40 mm	1 off	12. Fixing, M12 x 85 mm	2 off
6. Flanged sleeve	1 off	13. Engine spacer	2 off
7. Lock nut, M8	1 off	14. Exhaust gasket	1 off

### **⚠ WARNING**

Fit only genuine Triumph accessories to those models approved by Triumph as listed in the associated Triumph fitting instructions.

The accessory kits covered in this instruction are designed for use on specific models of Triumph motorcycle. The accessory kits and the models applicable are listed at the start of the instruction. They should never be fitted to any other Triumph model or to any other manufacturer's motorcycle.

Fitting an accessory kit to a Triumph model not listed, or to any other manufacturer's motorcycle, will affect the performance, stability and handling of the motorcycle.

Failure to follow the advice above may lead to loss of motorcycle control which could result in serious injury or death.

### **⚠ WARNING**

Always have Triumph approved parts, accessories and conversions fitted by a competent person with the specialist knowledge and technical understanding of motorcycles, such as an authorised Triumph dealer.

The fitment of parts, accessories and conversions by a person without the specialist knowledge and technical understanding of motorcycles may affect the handling, stability or other aspects of the motorcycle's operation.

Failure to follow the advice above may lead to loss of motorcycle control which could result in serious injury or death.

### **⚠ WARNING**

A torque wrench of known accurate calibration must be used when fitting this accessory kit.

Failure to tighten any of the fasteners to the correct torque specification may affect motorcycle performance, handling and stability.

Failure to follow the advice above may lead to loss of motorcycle control which could result in serious injury or death.

### **⚠ WARNING**

Make sure the motorcycle is stabilised and adequately supported.

Do not support the motorcycle on any ancillary component, the exhaust system or any other non structural parts of the motorcycle frame.

A correctly supported motorcycle will help prevent it from falling.

An unstable motorcycle may fall resulting in motorcycle damage, serious injury or death.

### **NOTICE**

Triumph offers a broad range of approved genuine accessories for your motorcycle.

We cannot therefore cover all possible equipment variations in these instructions. For removal and installation of Triumph Genuine Accessories, always refer to the instructions supplied with the respective accessory kit.

To obtain additional copies of any Triumph accessory instructions, visit [www.triumphinstructions.com](http://www.triumphinstructions.com) or contact your authorised Triumph dealer.

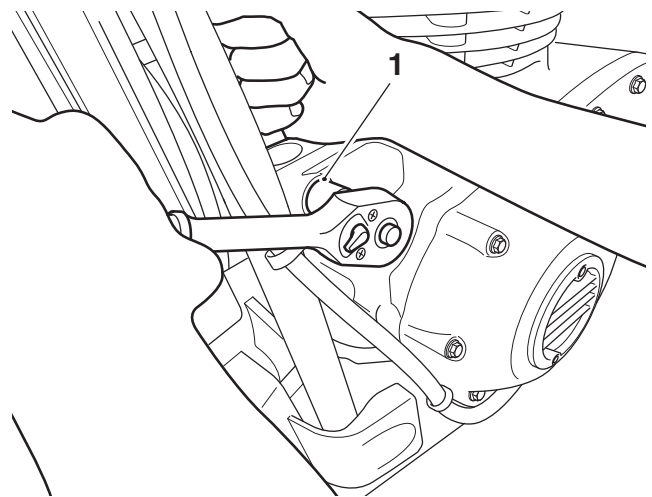
#### **Fitment of Dresser Bars**

1. Disconnect the battery, as described in the Service Manual.
2. Remove the left hand header pipe, as described in the Service Manual. Retain the header pipe and fixings for reuse. Discard the header gasket and exhaust gasket.

#### **Left Hand Side**

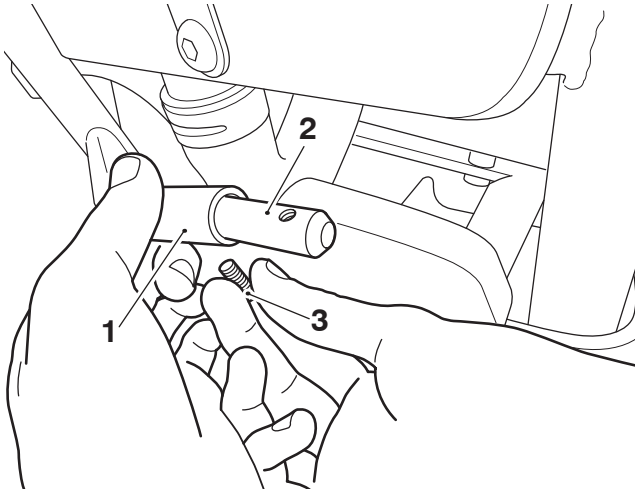
**Street Scrambler, Scrambler 900 Scrambler 1200 XC up to VIN AD7675, Scrambler 1200 XE up to VIN AC6805 Models Only**

3. Remove the front top engine mounting fixings. Retain the screw for reuse, discard the lock nut.



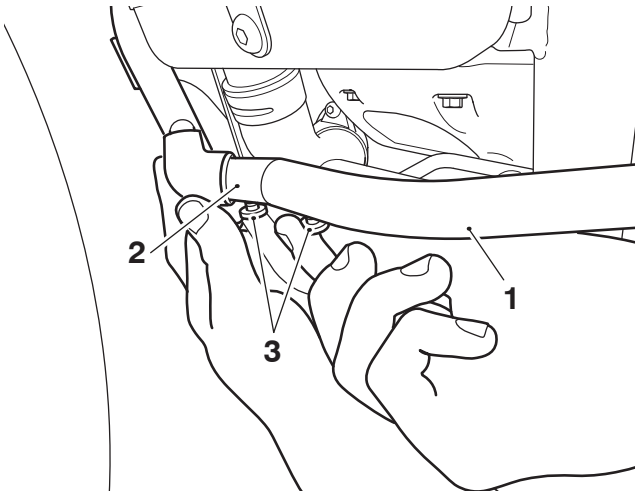
1. Fixing, top engine mount

- Fit the insert from the kit into the cross tube of the dresser bar in the orientation shown. Fit an M6 x 12 mm fixing. Do not fully tighten the fixing at this stage.



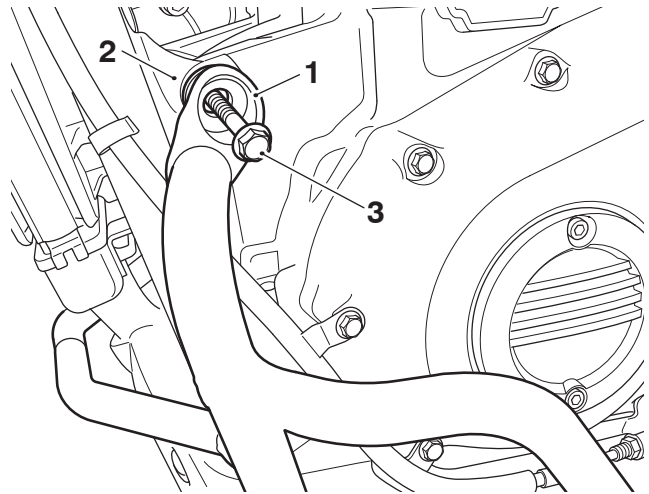
- Right hand dresser bar
- Insert
- Fixing, M6 x 12 mm

- If provided, slide the rubber cover onto the cross tube of the dresser bar past the insert fixing.
- Fit the cross tube of the dresser bar onto the insert fitted to the right hand dresser bar. Fit an M6 x 12 mm fixing. Do not fully tighten the fixings at this stage.



- Left hand dresser bar
- Right hand dresser bar
- Fixing, M6 x 12 mm

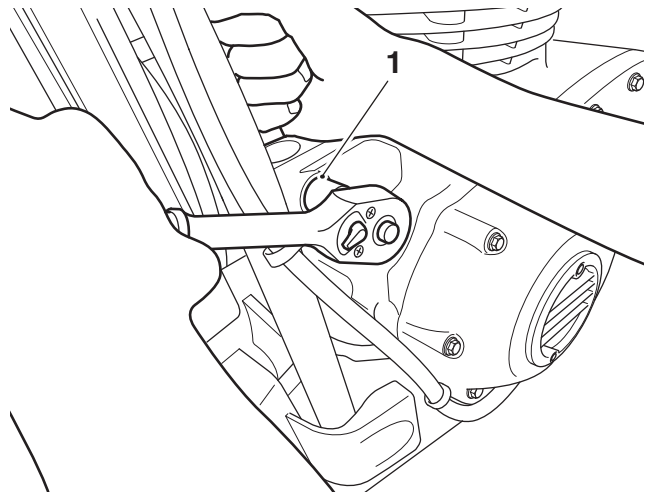
- Align the top bracket of the left hand dresser bar with the top engine mounting. Fit the original fixing screw and a new lock nut from the kit. Do not fully tighten the fixing at this stage.



- Left hand dresser bar
- Engine mounting, top
- Fixing, top engine mount

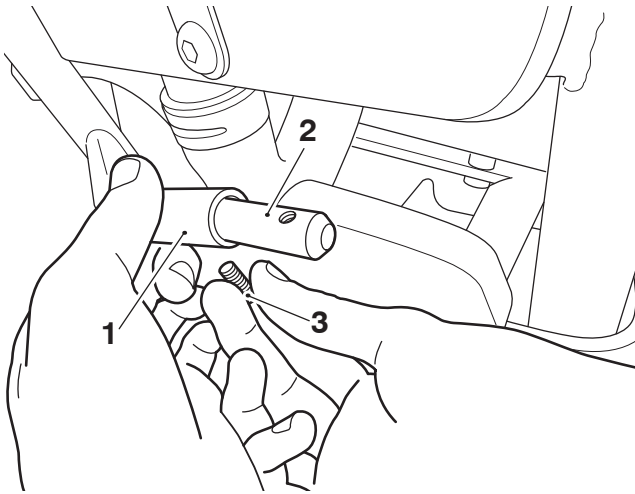
**Scrambler 1200 XC from VIN AD7675, Scrambler 1200 XE from VIN AC8499, Scrambler 1200 X Models Only**

- Remove the front top engine mounting fixings. Retain the screw for reuse if the motorcycle is to be returned to its original condition, discard the lock nut.



- Fixing, top engine mount

9. Fit the insert from the kit into the cross tube of the dresser bar in the orientation shown. Fit an M6 x 12 mm fixing. Do not fully tighten the fixing at this stage.

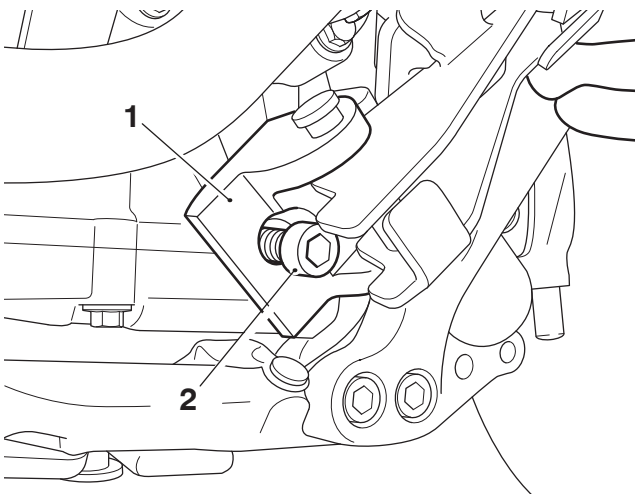


1. Right hand dresser bar  
2. Insert  
3. Fixing, M6 x 12 mm

10. If provided, slide the rubber cover onto the cross tube of the dresser bar past the insert fixing.

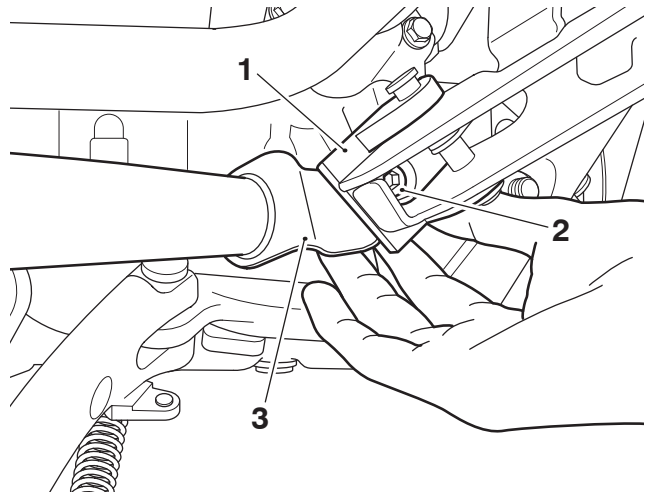
**Street Scrambler, Scrambler 900 Models Only**

11. Fold back the front footrest and fit the M8 x 25 mm fixing from the kit into the hole in the front footrest mounting, as shown.



1. Mounting, front footrest  
2. Fixing, M8 x 25 mm

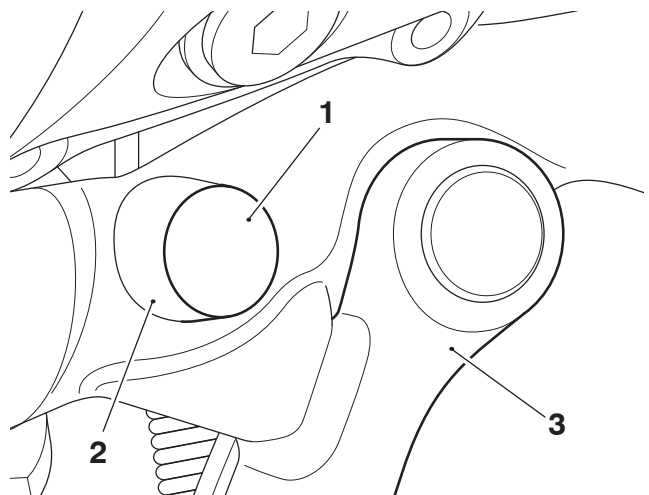
12. While holding the M8 x 25 mm fixing fit the dresser bar rear bracket on to the fixing, behind the footrest mounting as shown. Fit an M8 lock nut from the kit to the fixing. Do not fully tighten the fixing at this stage.



1. Front footrest  
2. Fixing, M8 x 25 mm  
3. Dresser bar rear bracket

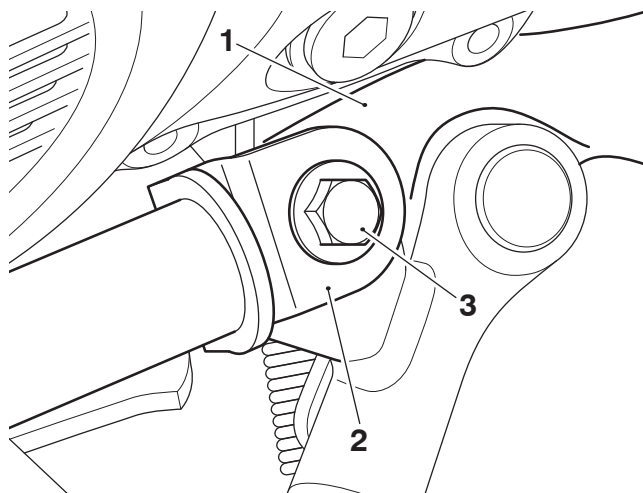
**Scrambler 1200 XC, Scrambler 1200 XE, Scrambler 1200 X Models Only**

13. Remove the blanking plug from the mounting on the left hand side of the motorcycle frame, positioned next to the side stand mounting. Retain the blanking plug for reuse if the motorcycle is to be returned to its original condition.



1. Blanking plug  
2. Mounting  
3. Side stand

14. Align the left hand dresser bar rear mounting bracket with the mounting hole in the motorcycle frame. Fit the M8 x 20 mm fixing from the kit. Do not fully tighten the fixing at this stage.

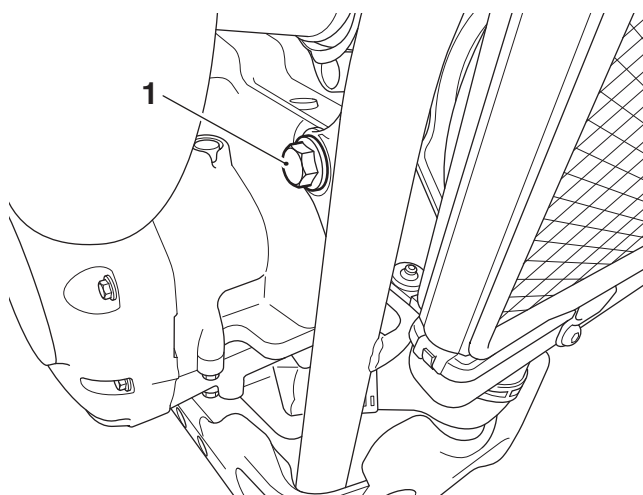


- 1. Motorcycle frame
- 2. Left hand dresser bar
- 3. Fixing, M8 x 20 mm

### Right Hand Side Fitment

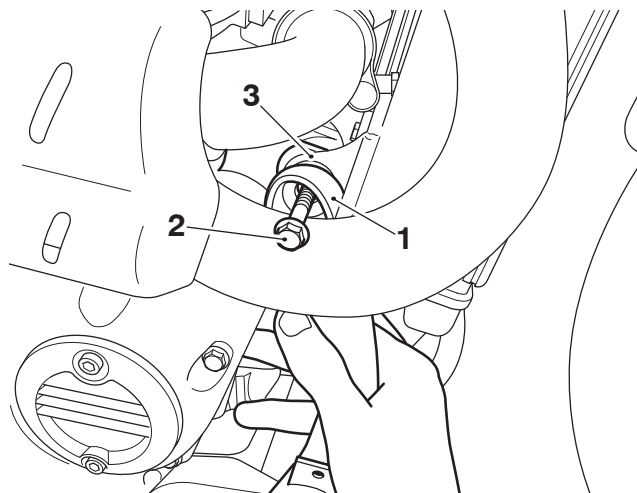
**Street Scrambler, Scrambler 900, Scrambler 1200 XC up to VIN AD7675, Scrambler 1200 XE up to VIN AC6805 Models Only**

15. Remove the front top engine mounting fixings, as shown. Retain the screw for reuse, discard the lock nut.



- 1. Fixing, top engine mount

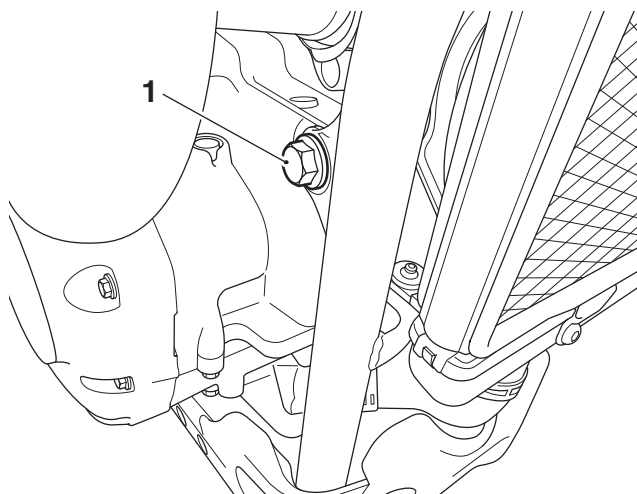
16. Align the top bracket of the right hand dresser bar with the top engine mounting. Fit the original fixing and a new lock nut from the kit. Do not fully tighten the fixings at this stage.



- 1. Right hand dresser bar
- 2. Fixing, top engine mount
- 3. Engine mounting, top

**Scrambler 1200 XC from VIN AD7675, Scrambler 1200 XE from VIN AC8499, Scrambler 1200 X Models Only**

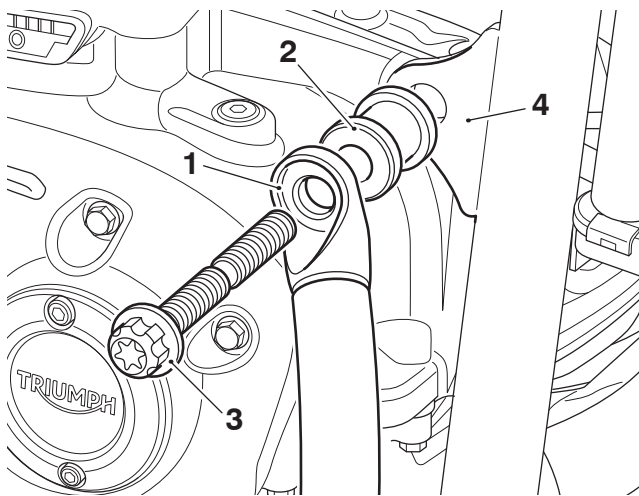
17. Remove the front top engine mounting fixings, as shown. Retain the screw for reuse if the motorcycle is to be returned to its original condition, discard the lock nut.



- 1. Fixing, top engine mount



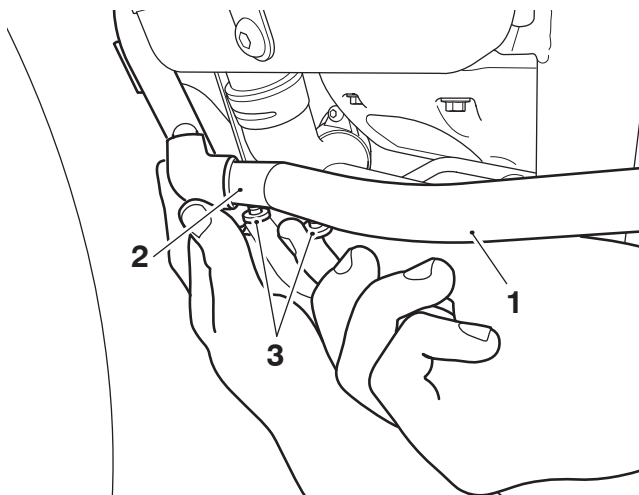
18. Align the top bracket of the right hand dresser bar with the top engine mounting along with an engine spacer from the kit as shown. Fit a M12 x 85 mm fixing and a new lock nut from the kit. Do not fully tighten the fixings at this stage.



- 1. Right hand dresser bar
- 2. Engine spacer
- 3. Fixing, M12 x 85 mm
- 4. Engine mounting, top

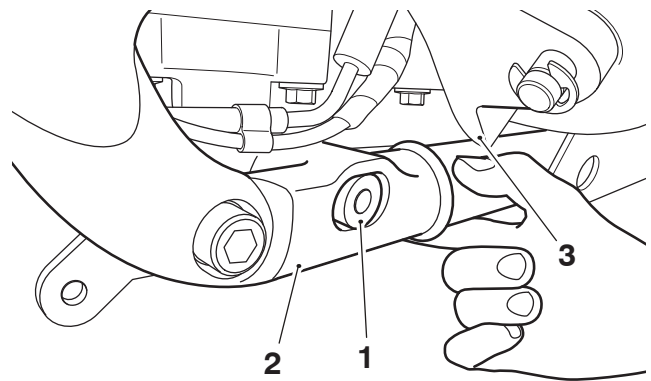
**All Models**

19. Fit the cross tube of the dresser bar onto the insert fitted to the right hand dresser bar. Fit an M6 x 12 mm fixing. Do not fully tighten the fixings at this stage.



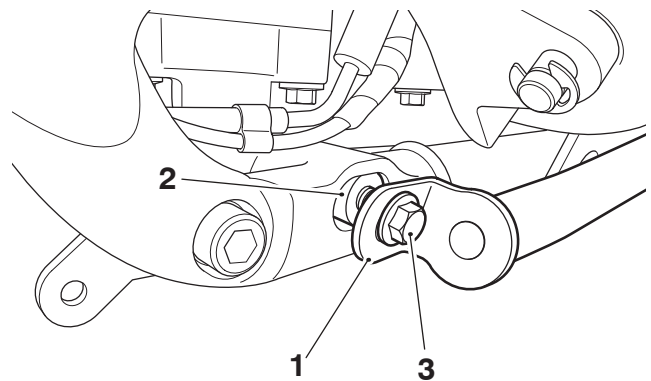
- 1. Left hand dresser bar
- 2. Right hand dresser bar
- 3. Fixing, M6 x 12 mm

20. Fit the flanged sleeve from the kit into the hole in the motorcycle frame below the front footrest mounting, in the orientation shown.



- 1. Flanged sleeve
- 2. Motorcycle frame
- 3. Footrest mounting

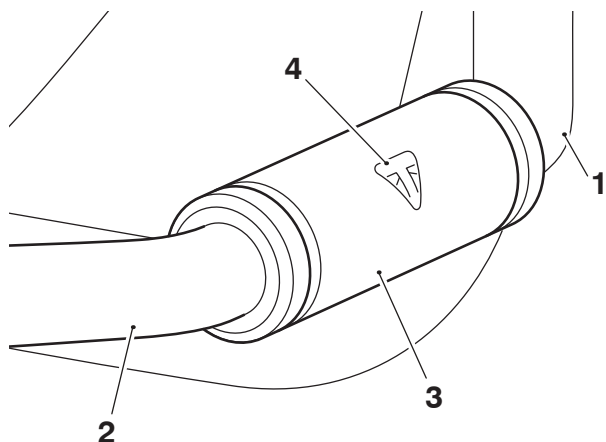
21. Align the bottom bracket of the dresser bar with the flanged sleeve. Fit the M8 x 40 mm fixing as shown. Fit an M8 lock nut to the fixing. Do not fully tighten the fixing at this stage.



- 1. Bottom bracket, dresser bar
- 2. Motorcycle frame
- 3. Fixing, M8 x 40 mm

22. While holding the new lock nuts with a suitable spanner, tighten the top fixings first to **105 Nm**. Using the same procedure tighten the rear fixings to **20 Nm**.
23. Tighten the insert fixings to **8 Nm**.
24. Refit the left hand header pipe with the new header gasket, where provided, as described in the Service Manual.

25. If provided, position the rubber cover centrally over the join between the left hand and right hand dresser bar cross tubes. Orientate the rubber cover to position the logo at the front, as shown.



1. Dresser bar cross tube, left hand
2. Dresser bar cross tube, right hand
3. Rubber cover
4. Logo

26. Reconnect the battery, as described in the Service Manual.

### **⚠ WARNING**

After fitting the accessory kit the motorcycle will exhibit new handling characteristics.

Operate the motorcycle in a safe area free from traffic to gain familiarity with any new characteristics.

Operation of the motorcycle when not familiar with any new handling characteristics may lead to loss of motorcycle control which could result in serious injury or death.

### **⚠ WARNING**

If, after fitting this accessory kit, you have any doubt about the performance of any aspect of the motorcycle, contact a competent person with the specialist knowledge and technical understanding of motorcycles, such as an authorised Triumph dealer.

Riding a motorcycle when there is any doubt as to any aspect of the performance of the motorcycle may lead to loss of motorcycle control which could result in serious injury or death.

### **⚠ WARNING**

Never ride an accessory-equipped motorcycle at speeds above 80 mph (130 km/h).

Remember that the 80 mph (130 km/h) limit will be reduced by the fitting of non-approved accessories, incorrect loading, worn tyres, overall motorcycle condition and poor road or weather conditions.

The presence of accessories will cause changes in the stability and handling of the motorcycle. Failure to allow for changes in motorcycle stability may lead to loss of motorcycle control which could result in serious injury or death.

### **⚠ WARNING**

High-speed operation should only be attempted by riders who have been instructed in the techniques necessary for high-speed riding and are familiar with the motorcycle's characteristics in all conditions.

Only operate this Triumph motorcycle at high speed in closed-course, on-road competition or on closed-course racetracks.

High-speed operation in any other circumstances is dangerous and may lead to loss of motorcycle control which could result in serious injury or death.

### **NOTICE**

The motorcycle must not be operated above the legal road speed limit except in closed-course conditions.