



Accessory Fitting Instructions

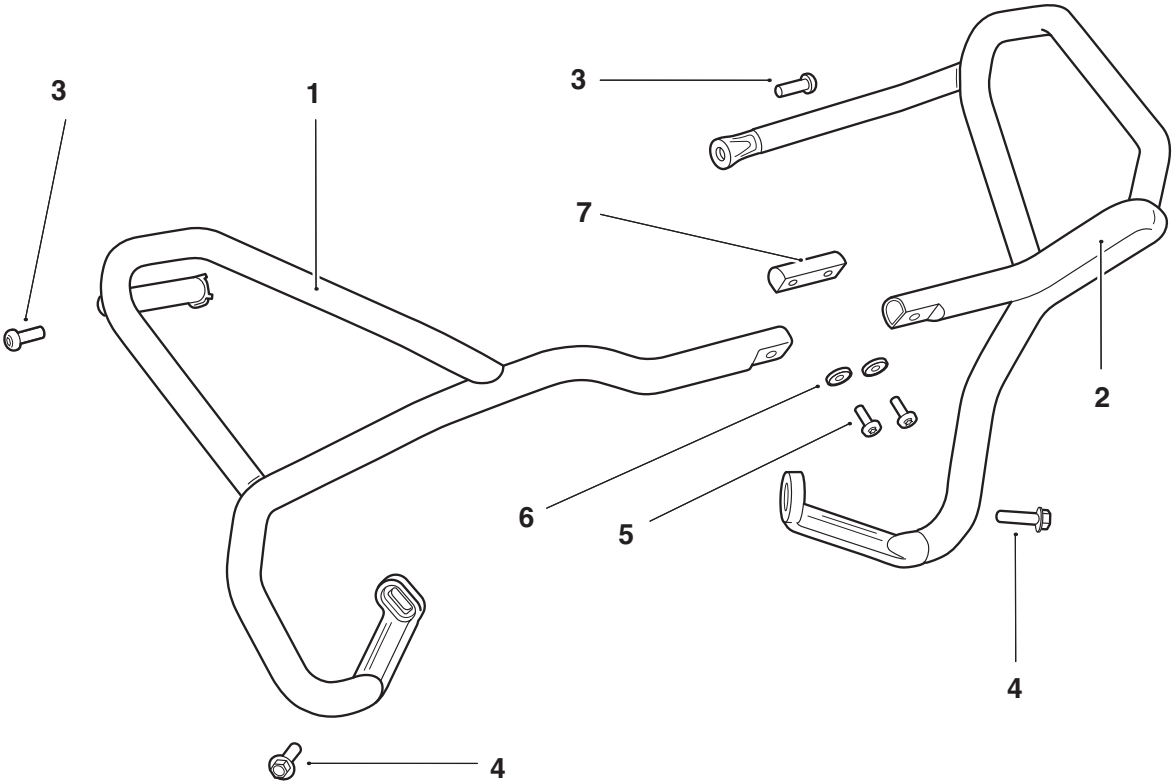
| Upper Bar Kit | |
|---------------|--|
| Kit Number | Models Affected |
| A9780107 | Tiger 1200 GT, Tiger 1200 GT Pro, Tiger 1200 Rally Pro |

Thank you for choosing this Triumph genuine accessory kit. This accessory kit is the product of Triumph's use of proven engineering, exhaustive testing, and continuous striving for superior reliability, safety and performance.

Completely read all of these instructions before commencing the installation of the accessory kit in order to become thoroughly familiar with the kit's features and the installation process.

These instructions should be considered a permanent part of your accessory kit, and should remain with it even if your accessory equipped motorcycle is subsequently sold.

Parts Supplied:



| | | | |
|--------------------------|-------|-----------------------|-------|
| 1. Upper bar, right hand | 1 off | 5. Fixing, M6 x 16 mm | 2 off |
| 2. Upper bar, left hand | 1 off | 6. Washer, 2 mm | 2 off |
| 3. Fixing, M8 x 25 mm | 2 off | 7. Link insert | 1 off |
| 4. Fixing, M8 x 30 mm | 2 off | | |



Warning

Fit only genuine Triumph accessories to those models approved by Triumph as listed in the associated Triumph fitting instructions. The accessory kits covered in this instruction are designed for use on specific models of Triumph motorcycle. The accessory kits and the models applicable are listed at the start of the instruction. They should never be fitted to any other Triumph model or to any other manufacturer's motorcycle. Fitting an accessory kit to a Triumph model not listed, or to any other manufacturer's motorcycle will affect the performance, stability and handling of the motorcycle. This may affect the rider's ability to control the motorcycle and could result in an accident causing severe injuries or death.



Warning

Always have Triumph approved parts, accessories and conversions fitted by a trained technician of an authorised Triumph dealer. The fitment of parts, accessories and conversions by a technician who is not of an authorised Triumph dealer may affect the handling, stability or other aspects of the motorcycle's operation which may result in loss of motorcycle control and an accident.



Warning

Throughout this operation, make sure that the motorcycle is stabilised and adequately supported to prevent risk of injury from the motorcycle falling.



Warning

A torque wrench of known accurate calibration must be used when fitting this accessory kit. Failure to tighten any of the fasteners to the correct torque specification may affect motorcycle performance, handling and stability. This may result in loss of motorcycle control and an accident.



Warning

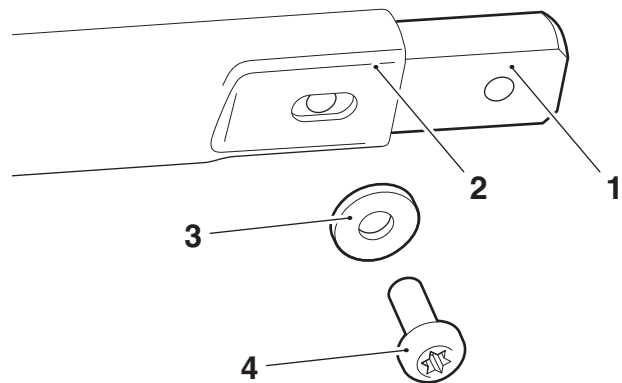
If the engine has recently been running, the exhaust system will be hot. Before working on or near the exhaust system, allow sufficient time for the system to cool, as touching any part of a hot exhaust could cause burn injuries.

Note:

- Triumph offers a broad range of approved genuine accessories for your motorcycle. We cannot therefore cover all possible equipment variations in these instructions. For removal and installation of Triumph Genuine Accessories, always refer to the instructions supplied with the respective accessory kit. To obtain additional copies of any Triumph accessory instructions, visit www.triumphinstructions.com or contact your authorised Triumph dealer.

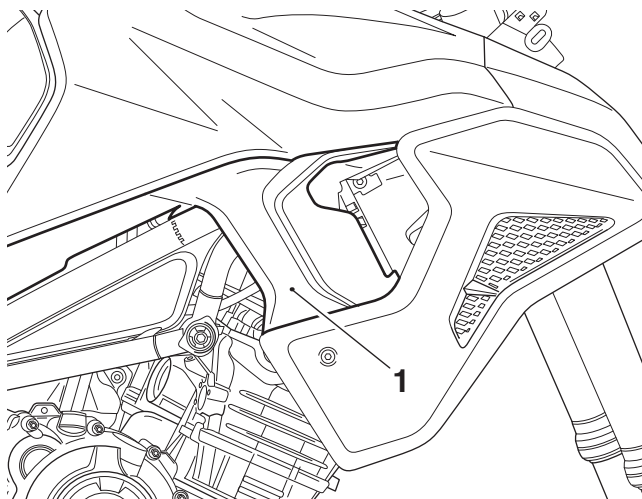
Right Hand Side

- Fit the link insert to the right hand upper bar with a washer and a M6 x 16 mm fixing from the kit. Do not fully tighten the fixings at this stage.



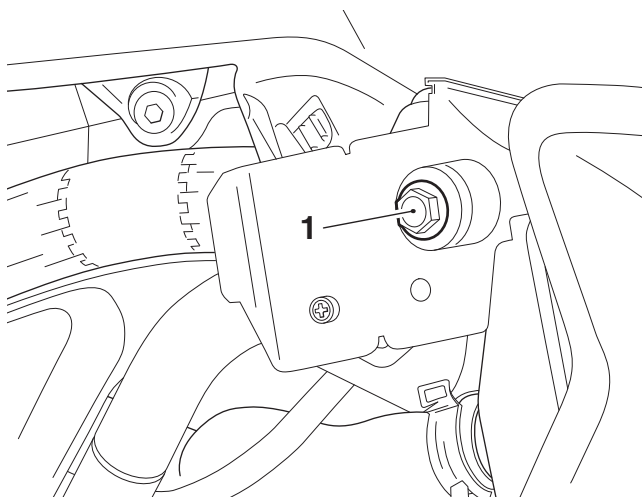
1. Link insert
2. Upper bar, right hand
3. Washer
4. Fixing, M6 x 16 mm

2. Remove the deflector bodywork panel, shown below, as described in the Service Manual.



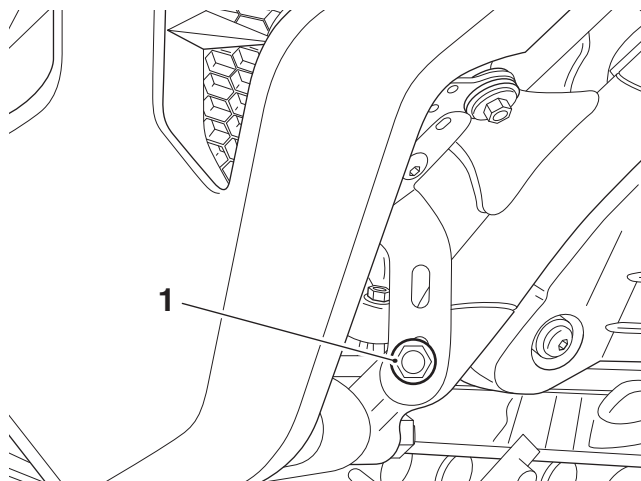
1. Deflector bodywork panel

3. Fold back the rubber shroud to reveal the upper rear mounting. Remove the M8 x 20 mm fixing. Retain the fixing for reuse if the motorcycle is to be returned to its original condition.



1. Fixing, M8 x 20 mm

4. Remove the M8 x 16 mm fixing mounting the lower radiator bracket to the frame. Retain the fixing for reuse if the motorcycle is to be returned to its original condition.



1. Fixing, M8 x 16 mm

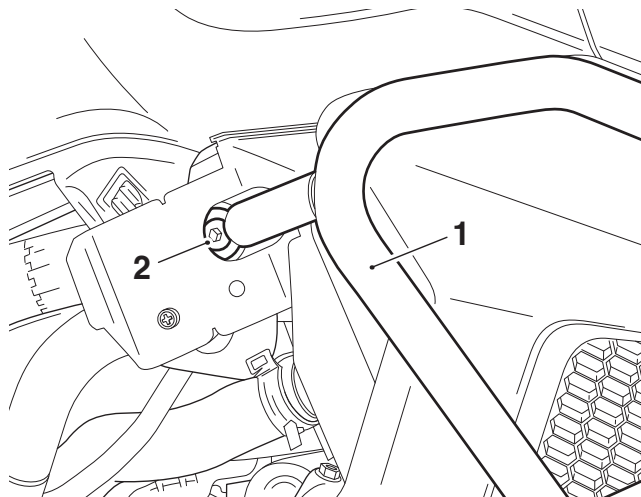


Caution

Make sure the rubber shroud is not clamped between the upper bar and the motorcycle.

Route the link bar under the beak and forwards of the forks. The upper bar routes through the hole in the rubber shroud at the rear mounting.

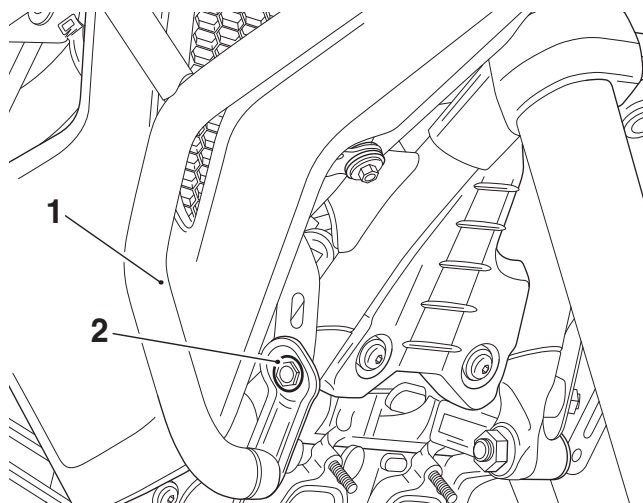
5. Align the right hand upper bar to the mountings on the motorcycle as shown. Fit the M8 x 25 mm fixing from the kit through the rear upper bar mounting, upper radiator mounting bracket sleeve and into the frame. Do not fully tighten the fixings at this stage.



1. Upper bar

2. Fixing, M8 x 25 mm

6. Fit the M8 x 30 mm fixing from the kit through the upper bar lower mounting, lower radiator mounting bracket and into the frame. Do not fully tighten the fixings at this stage.



1. Upper bar
2. Fixing, M8 x 30 mm

Left Hand Side

7. Repeat steps 2 - 4 on the left hand side of the motorcycle.

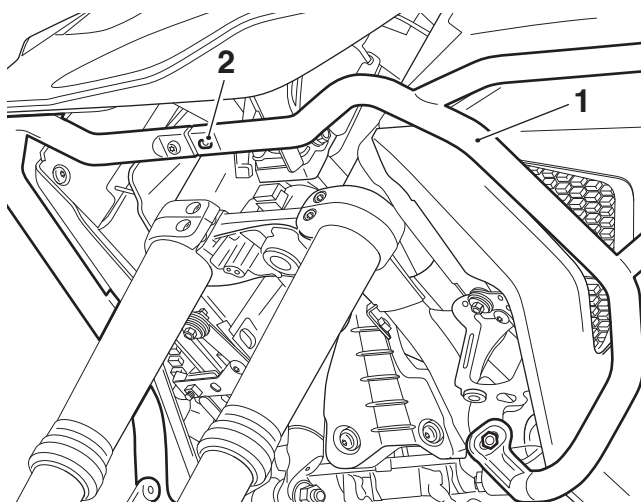


Caution

Make sure the rubber shroud is not clamped between the upper bar and the motorcycle.

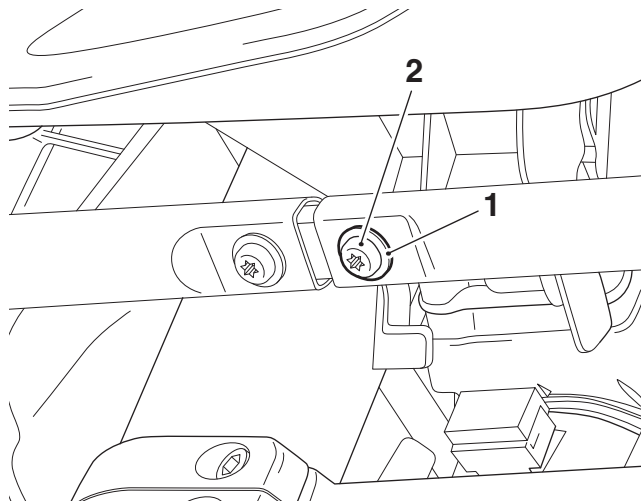
Route the link bar under the beak and forwards of the forks. The upper bar routes through the hole in the rubber shroud at the rear mounting.

8. Align the left hand upper bar to the mountings on the motorcycle as shown below.



1. Upper bar
2. Link insert

9. Fit the M8 x 25 mm fixing from the kit through the rear upper bar mounting, upper radiator mounting bracket sleeve and into the frame. Do not fully tighten the fixings at this stage.
10. Fit the M8 x 30 mm fixing from the kit through the upper bar lower mounting, lower radiator mounting bracket and into the frame. Do not fully tighten the fixings at this stage.
11. Fit the M6 x 16 mm fixing with a washer from the kit through the upper bar and into the link insert. Do not fully tighten the fixings at this stage.



1. Washer
2. Fixing, M6 x 16 mm

Left Hand and Right Hand Side

12. Tighten the left hand M8 x 25 mm and M8 x 30 mm fixings to **19 Nm**.
13. Tighten the right hand M8 x 25 mm and M8 x 30 mm fixings to **19 Nm**.
14. Tighten the link bar M6 x 16 mm fixings to **8 Nm**.
15. Refit the left and right hand deflector bodywork panels, as described in the Service Manual.



Warning

After fitting the accessory kit the motorcycle will exhibit new handling characteristics. Operate the motorcycle in a safe area free from traffic to gain familiarity with any new characteristics. Operation of the motorcycle when not familiar with any new handling characteristics may result in loss of motorcycle control and an accident.



Warning

If, after fitting this accessory kit, you have any doubt about the performance of any aspect of the motorcycle, contact an authorised Triumph dealer and do not ride the motorcycle until the authorised dealer has declared it fit for use. Riding a motorcycle when there is any doubt as to any aspect of the performance of the motorcycle may result in loss of motorcycle control and an accident.



Warning

Never ride an accessory-equipped motorcycle at speeds above 80 mph (130 km/h).

The presence of accessories will cause changes in the stability and handling of the motorcycle. Failure to allow for changes in motorcycle stability may result in loss of motorcycle control and an accident.

Remember that the 80 mph (130 km/h) limit will be reduced by the fitting of non-approved accessories, incorrect loading, worn tyres, overall motorcycle condition and poor road or weather conditions.



Warning

The motorcycle must not be operated above the legal road speed limit except in closed-course conditions.



Warning

Only operate this Triumph motorcycle at high speed in closed-course, on-road competition or on closed-course racetracks. High-speed operation should only be attempted by riders who have been instructed in the techniques necessary for high-speed riding and are familiar with the motorcycle's characteristics in all conditions.

High-speed operation in any other circumstances is dangerous and may result in loss of motorcycle control and an accident.