

English

Fitting Instructions:

**Tiger XR, Tiger XR_T, Tiger XR_x, Tiger XC, Tiger 800, Tiger 800 XC
A9788004**

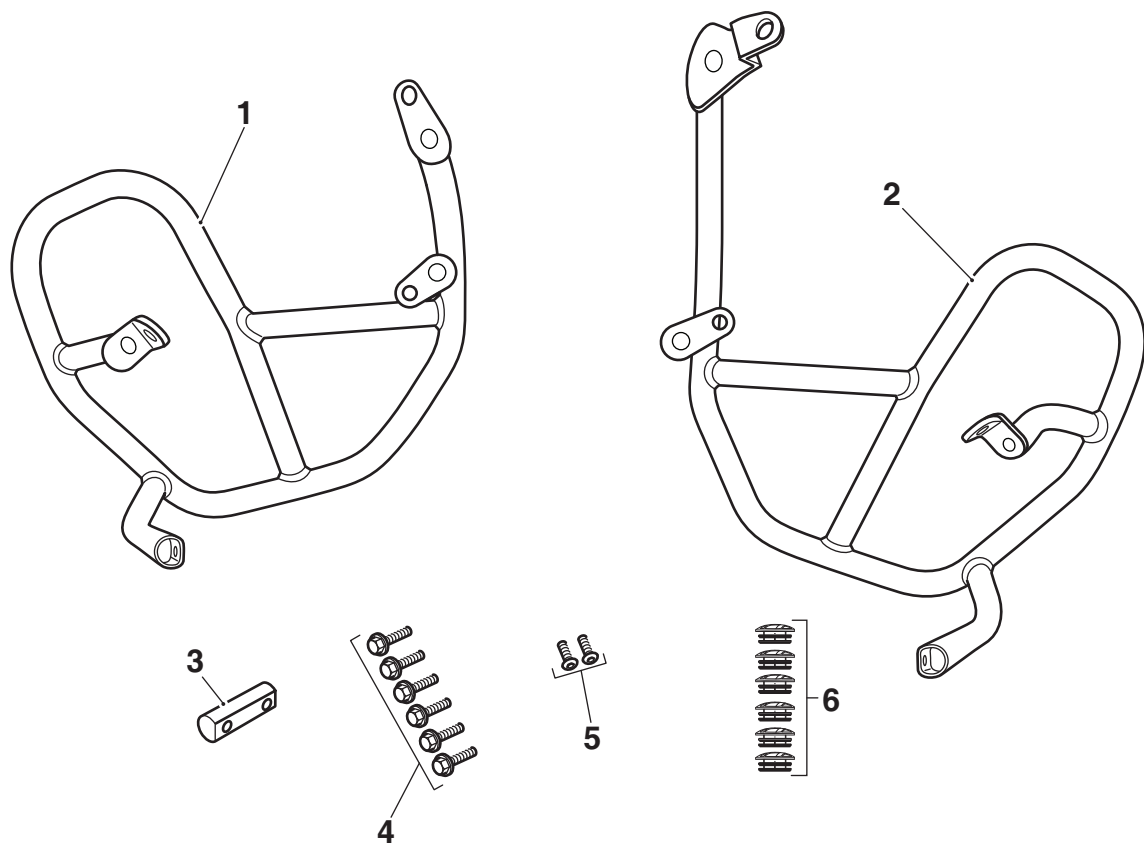
**Tiger 800 XC_x, Tiger 800 XC_A, Tiger 800 XR, Tiger 800 XR_x,
Tiger 800 XR_x LRH, Tiger 800 XR_T
A9780072, A9780111**

**Tiger 800 XR, Tiger 800 XR_x, Tiger 800 XR_x LRH, Tiger 800 XR_T
A9780090, A9780112**

Thank you for choosing this Triumph genuine accessory kit. This accessory kit is the product of Triumph's use of proven engineering, exhaustive testing, and continuous striving for superior reliability, safety and performance.

Completely read all of these instructions before commencing the installation of the accessory kit in order to become thoroughly familiar with the kit's features and the installation process.

These instructions should be considered a permanent part of your accessory kit, and should remain with it even if your accessory-equipped motorcycle is subsequently sold.



Parts Supplied:

1.	Engine bar, RH	1 off	4.	Bolt, M8 x 20 mm	6 off
2.	Engine bar, LH	1 off	5.	Screw, M6 x 12 mm	2 off
3.	Centre bar	1 off	6.	Plastic cap 12 mm	6 off

Warning

The accessory kits covered in this instruction are designed for use on specific models of Triumph motorcycle. The accessory kits and the models applicable are listed at the start of the instruction. They should not be fitted to any other Triumph model or to any other manufacturer's motorcycle. Fitting an accessory kit to a Triumph model not listed, or to any other manufacturer's motorcycle will affect the performance, stability and handling of the motorcycle. This may affect the rider's ability to control the motorcycle and could cause an accident.

Warning

Always have Triumph approved parts, accessories and conversions fitted by a trained technician of an authorised Triumph dealer. The fitment of parts, accessories and conversions by a technician who is not of an authorised Triumph dealer may affect the handling, stability or other aspects of the motorcycle's operation which may result in loss of motorcycle control and an accident.

Warning

Throughout this operation, ensure that the motorcycle is stabilised and adequately supported to prevent risk of injury from the motorcycle falling.

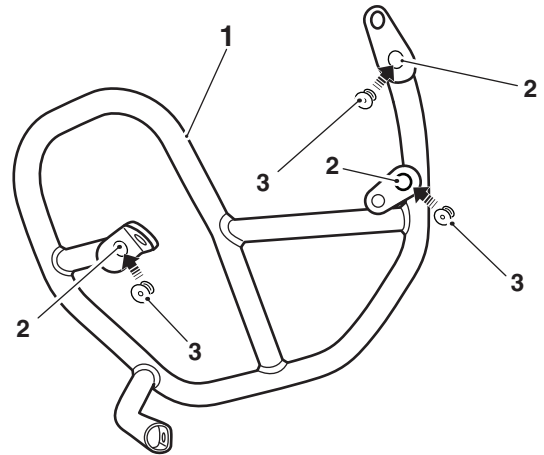
Warning

If the engine has recently been running, the exhaust system will be hot. Before working on or near the exhaust system, allow sufficient time for the exhaust system to cool as touching any part of a hot exhaust system could cause burn injuries.

Warning

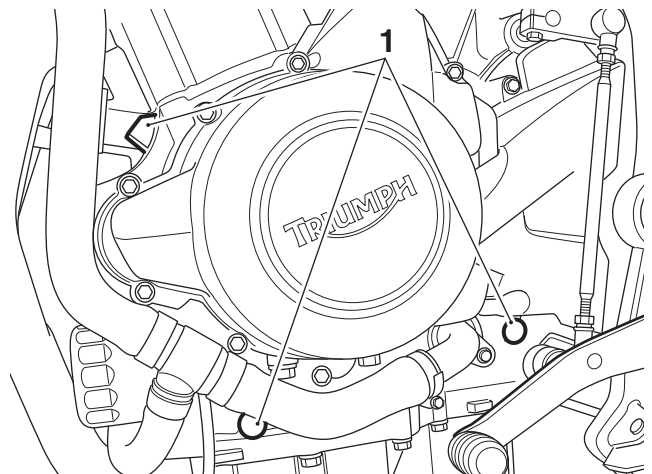
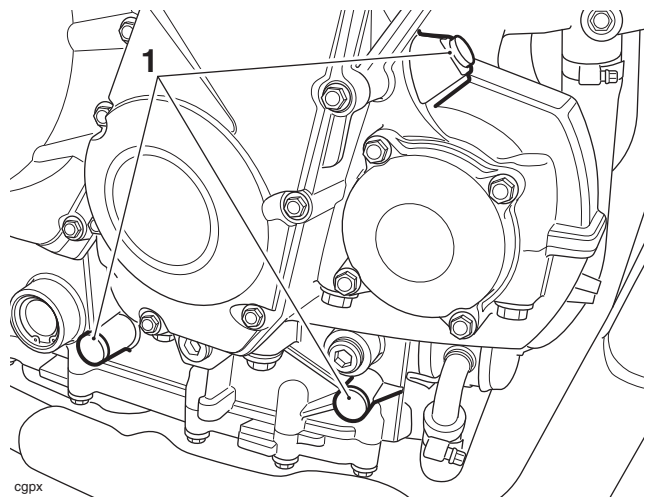
A torque wrench of known accurate calibration must be used when fitting this accessory kit. Failure to tighten any of the fasteners to the correct torque specification may affect motorcycle performance, handling and stability. This may result in loss of motorcycle control and an accident.

1. Collect the six 12 mm plastic caps from the parts kit, locate the caps into the left hand and right hand engine bar drain holes as shown below.



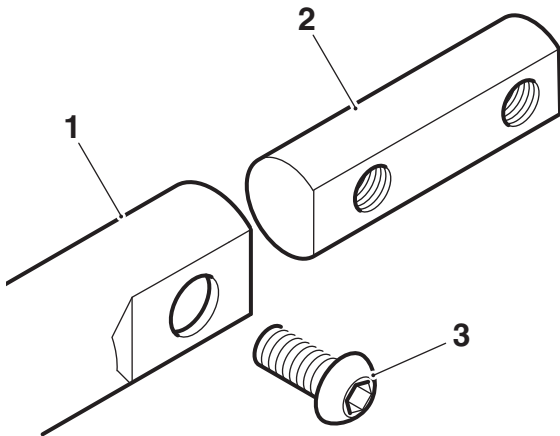
- 1. Engine bar (right hand shown)
- 2. Drain holes
- 3. Plastic cap 12 mm

2. Remove the six crankcase blanking plugs. Retain the plugs for re-use if the motorcycle is to be returned to its original condition.



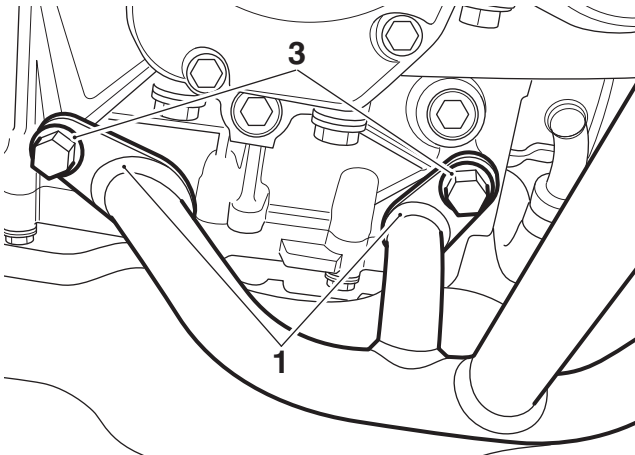
- 1. Blanking plug locations

3. Install the centre bar to the right hand engine bar and secure using the M6 x 12 mm screw. Do not tighten the screw at this stage.

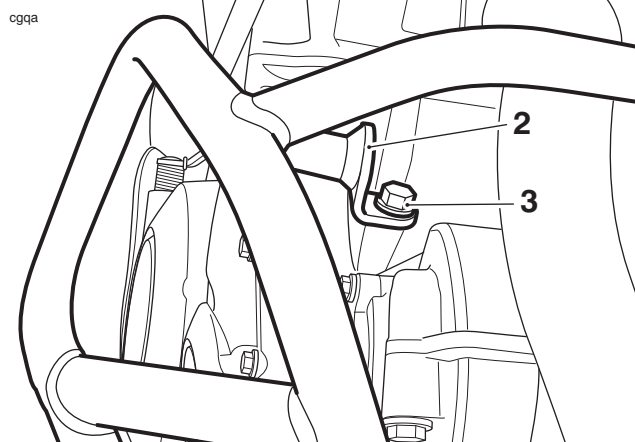


1. Right hand engine bar
2. Centre bar
3. M6 x 12 mm screw

4. Position the right hand engine bar to the crankcase mounting bosses and secure using three M8 x 20 mm bolts. Do not tighten the bolts at this stage.

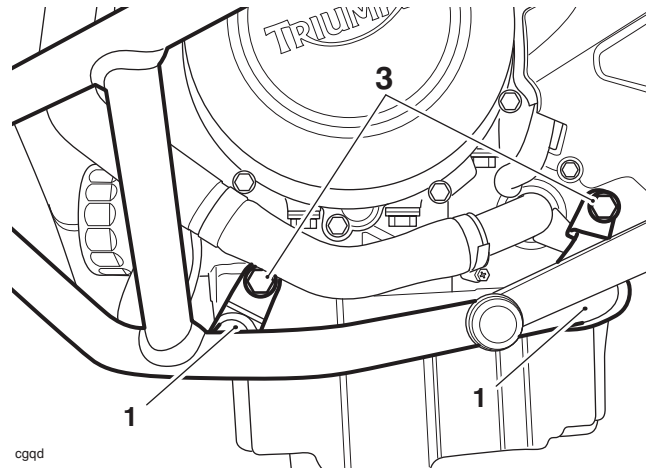


cgqa

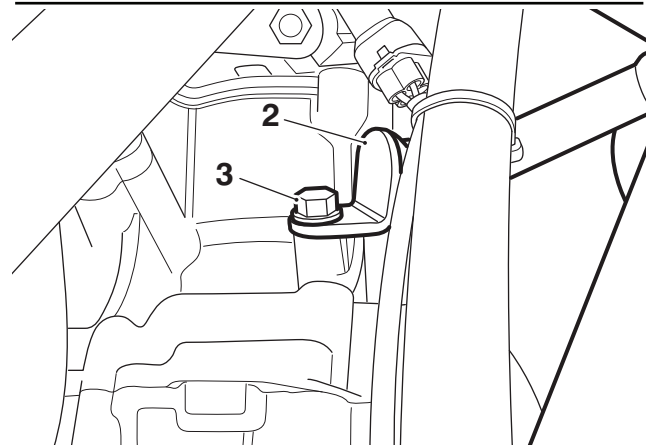


1. Engine bar lower mountings (right hand)
2. Engine bar upper mounting (right hand)
3. M8 x 20 mm bolts

5. Slide the left hand engine bar over the centre bar and position to the crankcase mounting bosses. Secure using three M8 x 20 mm bolts. Do not tighten the bolts at this stage.

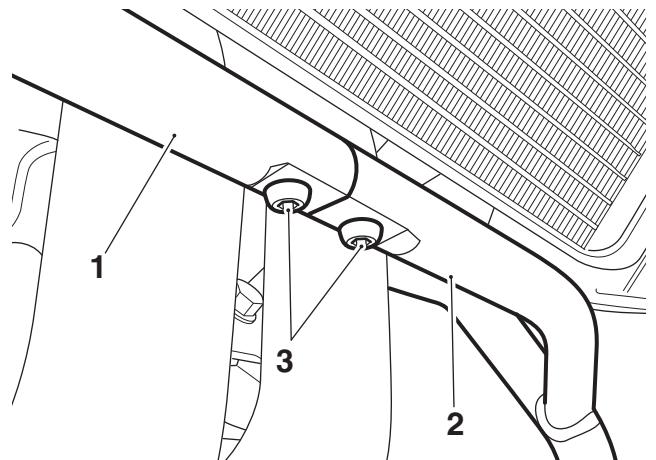


ogqd



1. Engine bar lower mountings (left hand)
2. Engine bar upper mounting (left hand)
3. M8 x 20 mm bolts

6. Secure the left hand engine bar to the centre bar using the M6 x 12 mm screw. Do not tighten the screw at this stage.



1. Right hand engine bar
2. Left hand engine bar
3. M6 x 12 mm screws

7. Tighten the right hand engine bar bolts to **20 Nm**.
8. Tighten the left hand engine bar bolts to **20 Nm**.
9. Tighten the centre bar screws to **8 Nm**.



Warning

After fitting the accessory kit the motorcycle will exhibit new handling characteristics. Operate the motorcycle in a safe area free from traffic to gain familiarity with any new characteristics. Operation of the motorcycle when not familiar with any new handling characteristics may result in loss of motorcycle control and an accident.



Warning

If, after fitting this accessory kit, you have any doubt about the performance of any aspect of the motorcycle, contact an authorised Triumph dealer and do not ride the motorcycle until the authorised dealer has declared it fit for use. Riding a motorcycle when there is any doubt as to any aspect of the performance of the motorcycle may result in loss of control of the motorcycle leading to an accident.



Warning

Never ride an accessory equipped motorcycle at speeds above 80 mph (130 km/h).

The presence of accessories will cause changes in the stability and handling of the motorcycle. Failure to allow for changes in motorcycle stability may lead to loss of control or an accident.

Remember that the 80 mph (130 km/h) limit will be reduced by the fitting of non-approved accessories, incorrect loading, worn tyres, overall motorcycle condition and poor road or weather conditions.



Warning

The motorcycle must not be operated above the legal road speed limit except in closed-course conditions.



Warning

Only operate this Triumph motorcycle at high speed in closed-course, on-road competition or on closed-course racetracks. High-speed operation should only be attempted by riders who have been instructed in the techniques necessary for high-speed riding and are familiar with the motorcycle's characteristics in all conditions.

High-speed operation in any other circumstances is dangerous and will lead to loss of motorcycle control and an accident.