



Accessory Fitting Instructions

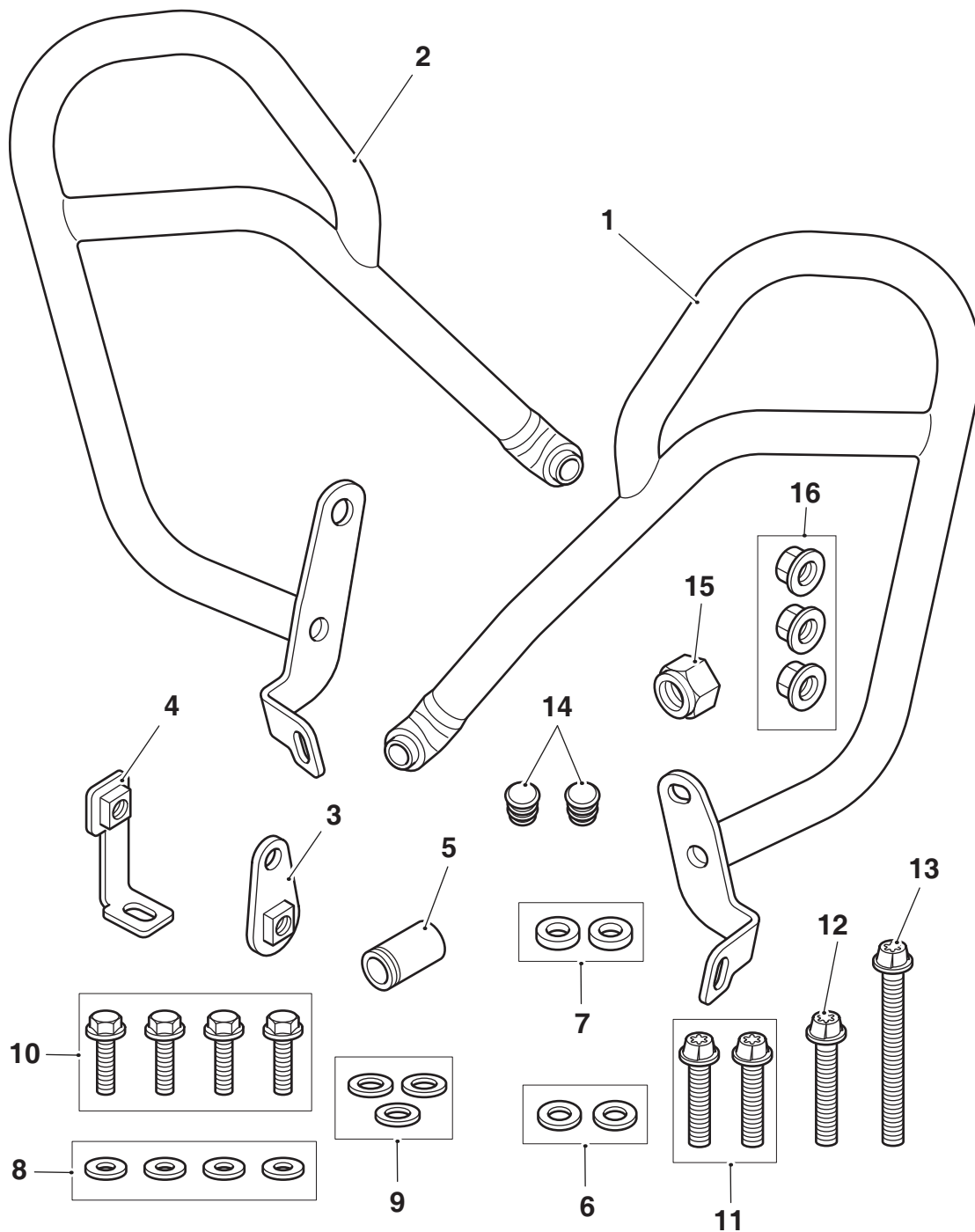
Fuel Tank Protection Bars	
Kit Number	Models Affected
A9780062	Tiger 800 XR, Tiger 800 XR _x , Tiger 800 XR _x LRH, Tiger 800 XR _T , Tiger 800 XC _x , Tiger 800 XCA
A9780065	Tiger 800 XR, Tiger 800 XR _x , Tiger 800 XR _x LRH, Tiger 800 XR _T , Tiger 800 XC _x , Tiger 800 XCA

Thank you for choosing this Triumph genuine accessory kit. This accessory kit is the product of Triumph's use of proven engineering, exhaustive testing, and continuous striving for superior reliability, safety and performance.

Completely read all of these instructions before commencing the installation of the accessory kit in order to become thoroughly familiar with the kit's features and the installation process.

These instructions should be considered a permanent part of your accessory kit, and should remain with it even if your accessory equipped motorcycle is subsequently sold.

Parts Supplied



1. Fuel tank protection bar, right hand	1 off	9. Washer, M10	3 off
2. Fuel tank protection bar, left hand	1 off	10. Fixing, M8 x 25 mm	4 off
3. Upper bracket	1 off	11. Fixing, M10 x 45 mm	2 off
4. Lower bracket	1 off	12. Fixing, M10 x 65 mm	1 off
5. Spacer, 22 mm x 33 mm long	1 off	13. Fixing, M10 x 100 mm	1 off
6. Spacer, M8 x 4 mm	2 off	14. Plastic cap	2 off
7. Spacer, M10 x 5 mm	2 off	15. Lock nut, M16	1 off
8. Washer, M8	4 off	16. Lock nut, M10	3 off

Warning

The accessory kits covered in this instruction are designed for use on specific models of Triumph motorcycle. The accessory kits and the models applicable are listed at the start of the instruction. They should not be fitted to any other Triumph model or to any other manufacturer's motorcycle. Fitting an accessory kit to a Triumph model not listed, or to any other manufacturer's motorcycle will affect the performance, stability and handling of the motorcycle. This may affect the rider's ability to control the motorcycle and could cause an accident.

Warning

Always have Triumph approved parts, accessories and conversions fitted by a trained technician of an authorised Triumph dealer. The fitment of parts, accessories and conversions by a technician who is not of an authorised Triumph dealer may affect the handling, stability or other aspects of the motorcycle's operation which may result in loss of motorcycle control and an accident.

Warning

Throughout this operation, ensure that the motorcycle is stabilised and adequately supported to prevent risk of injury from the motorcycle falling.

Warning

A torque wrench of known accurate calibration must be used when fitting this accessory kit. Failure to tighten any of the fasteners to the correct torque specification may affect motorcycle performance, handling and stability. This may result in loss of motorcycle control and an accident.

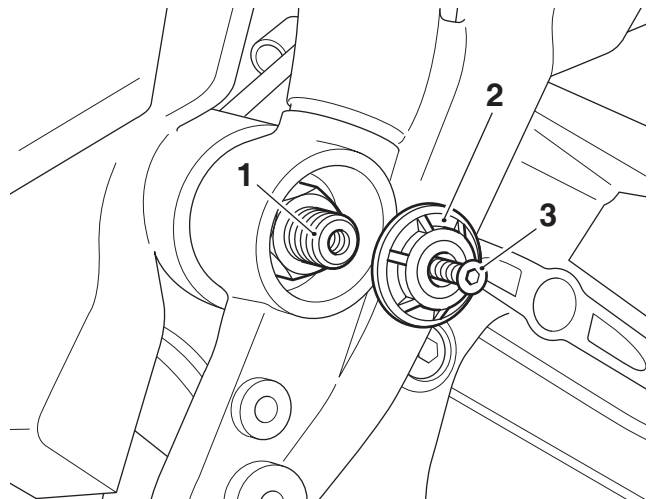
Warning

If the engine has recently been running, the exhaust system will be hot. Before working on or near the exhaust system, allow sufficient time for the system to cool, as touching any part of a hot exhaust could cause burn injuries.

Note:

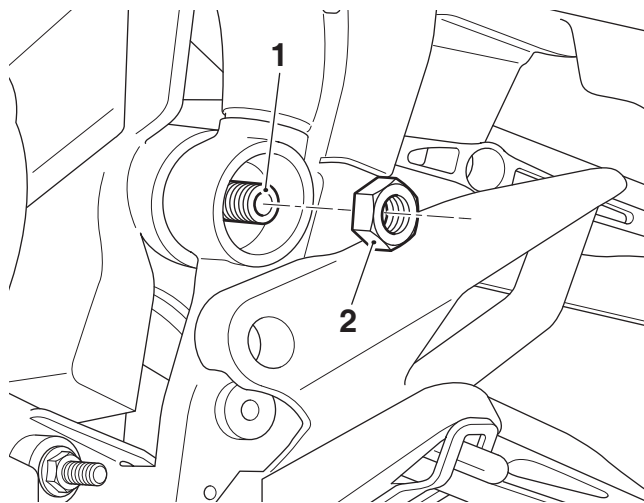
- Triumph offers a broad range of approved genuine accessories for your motorcycle. We cannot therefore cover all possible equipment variations in these instructions. For removal and installation of Triumph Genuine Accessories, always refer to the instructions supplied with the respective accessory kit. To obtain additional copies of any Triumph accessory instructions, visit www.triumphinstructions.com or contact your authorised Triumph dealer.
- Ensure that the motorcycle Service Manual is available for reference during the fitting of this accessory kit.

1. Remove the front side panels from the right hand and left hand side of the motorcycle, as described in the Service Manual.
2. Remove the swinging arm spindle finishers from the left hand and right hand side of the motorcycle. Retain the finishers and fixings for reuse.



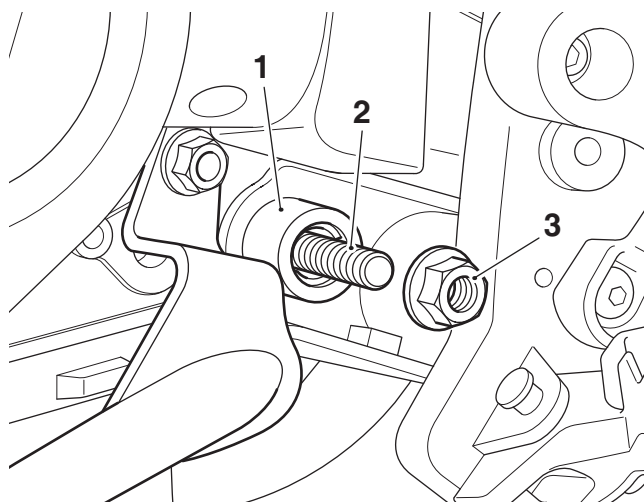
1. Swinging arm spindle
2. Finisher, left hand side shown
3. Fixing

- Remove the lock nut from the swinging arm spindle on the left hand side of the motorcycle. Do not remove the washer or swinging arm spindle. Discard the lock nut.



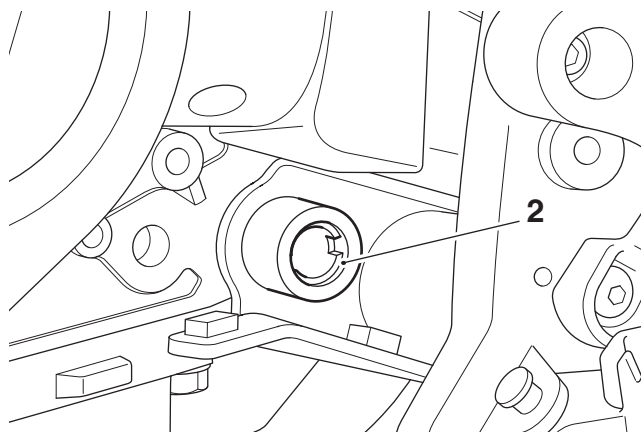
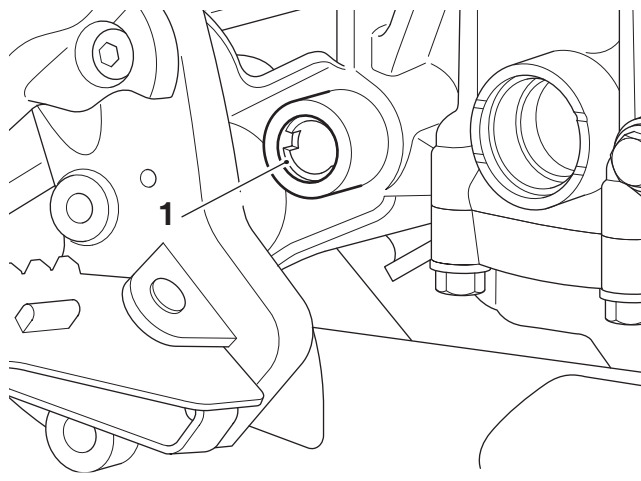
- Swinging arm spindle
- Lock nut

- Remove the lock nut from the lower rear gearbox mounting fixing. Remove the fixing and washers. Retain the fixing and washers for reuse, discard the lock nut.



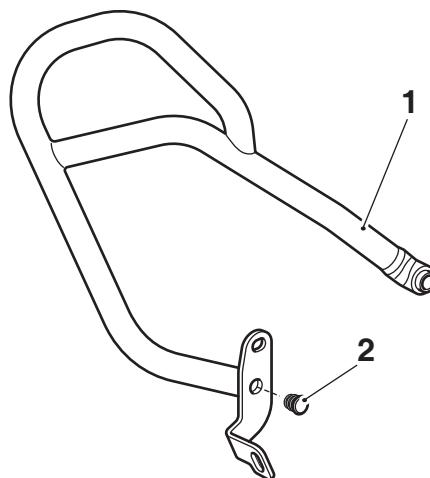
- Lower rear gearbox mounting
- Fixing
- Lock nut

- Using the Triumph Service Tool T3880103, loosen the right hand and left hand frame adjusters. Unscrew the frame adjusters fully to allow clearance between the engine and frame.



- Frame adjuster, right hand
- Frame adjuster, left hand

- Collect the left hand and right hand fuel tank protection bars and two plastic caps from the kit.
- Fit the plastic caps into the fuel protection bars, as shown.



- Fuel tank protection bar, right hand shown
- Plastic cap

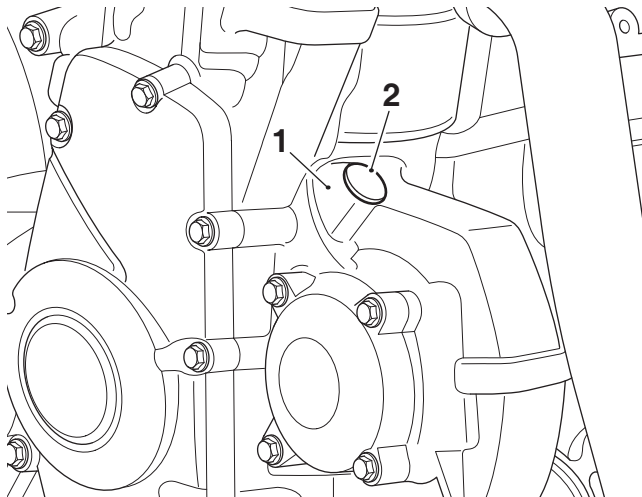
Right Hand Side

Note:

- For motorcycles without Lower Dresser Bars fitted follow steps 8 and 9, then continue from step 12. For motorcycles with Lower Dresser Bars fitted continue from step 10.

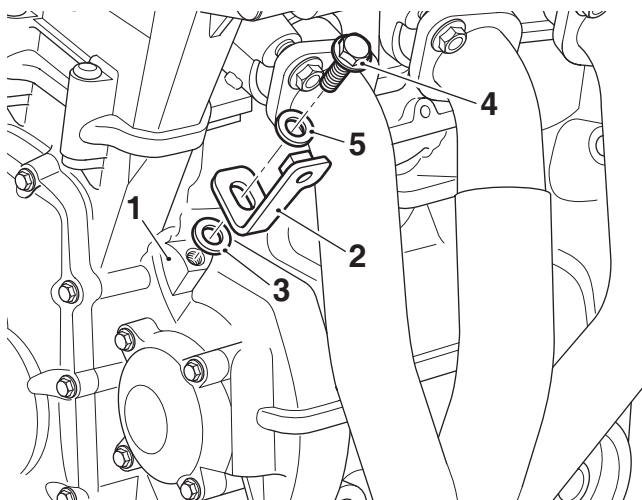
Motorcycles Without Lower Dresser Bars Fitted

8. Remove the blanking plug from the crankcase. Retain the blanking plug for reuse if the motorcycle is to be returned to its original condition.



1. Crankcase
2. Blanking plug

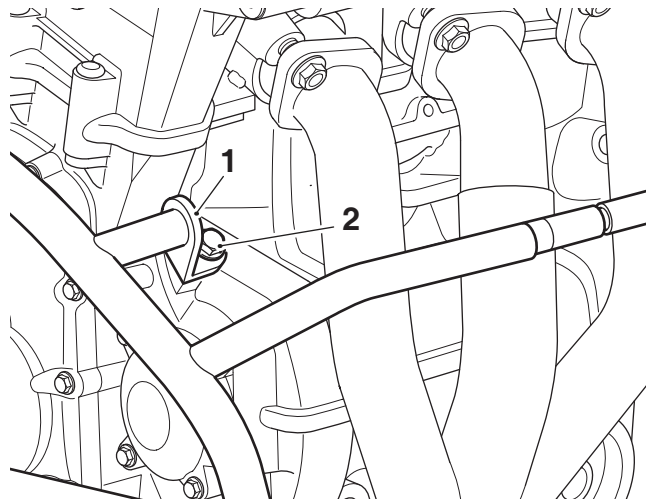
9. Position the lower bracket from the kit together with an M8 x 4 mm spacer onto the crankcase mounting in the orientation shown. Fit an M8 x 25 mm fixing and M8 washer from the kit. Do not fully tighten the fixing at this stage.



1. Crankcase mounting
2. Lower bracket
3. Spacer, M8 x 4 mm
4. Fixing, M8 x 25 mm
5. Washer, M8

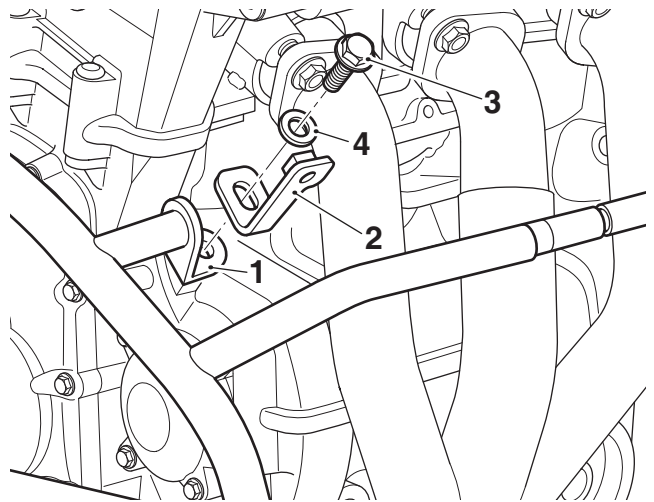
Motorcycles With Lower Dresser Bars Fitted

10. Remove the fixing from the lower dresser bar front mounting. Retain the fixing for reuse if the motorcycle is to be returned to its original condition.



1. Lower dresser bar front mounting
2. Fixing

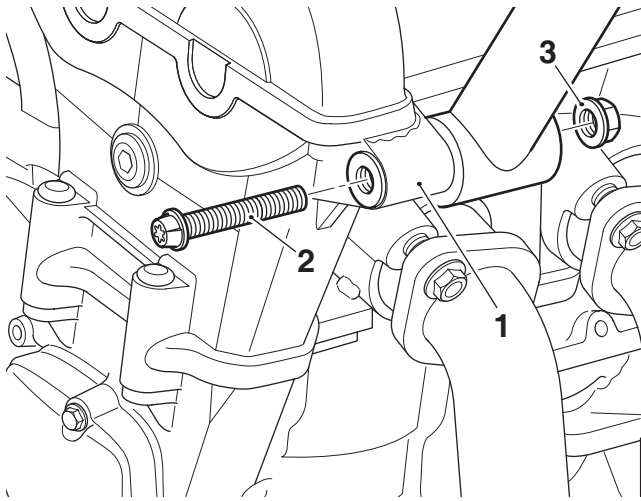
11. Position the lower bracket from the kit onto the lower dresser bar front mounting in the orientation shown. Fit an M8 x 25 mm fixing and M8 washer from the kit. Do not fully tighten the fixing at this stage.



1. Lower dresser bar front mounting
2. Lower bracket
3. Fixing, M8 x 25 mm
4. Washer, M8

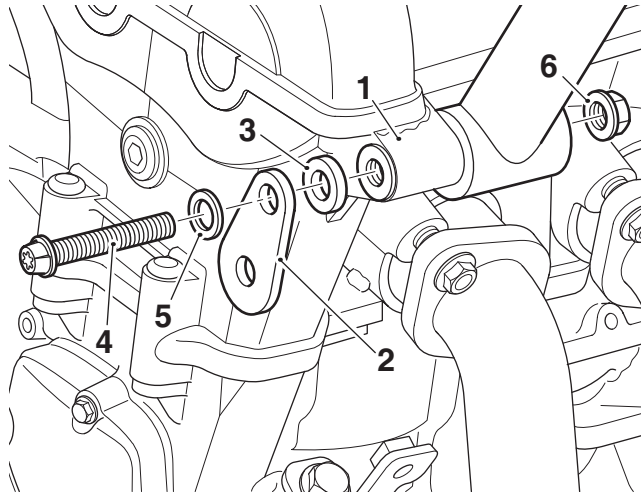
All Motorcycles

12. Remove the front engine mounting fixing and lock nut. Retain the fixing for reuse if the motorcycle is to be returned to its original condition. Discard the lock nut.



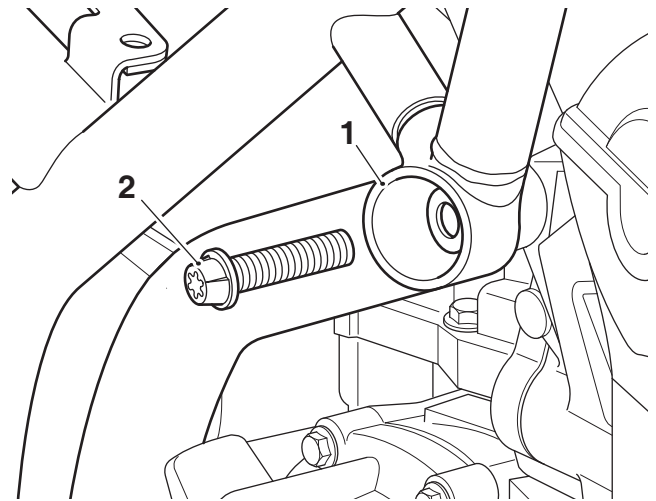
1. Front engine mounting
2. Fixing
3. Lock nut

13. Fit the upper bracket, M10 x 5 mm spacer, M10 x 65 mm fixing, M10 washer and M10 lock nut from the kit to the front engine mounting position in the orientation shown. Do not fully tighten the fixing at this stage.



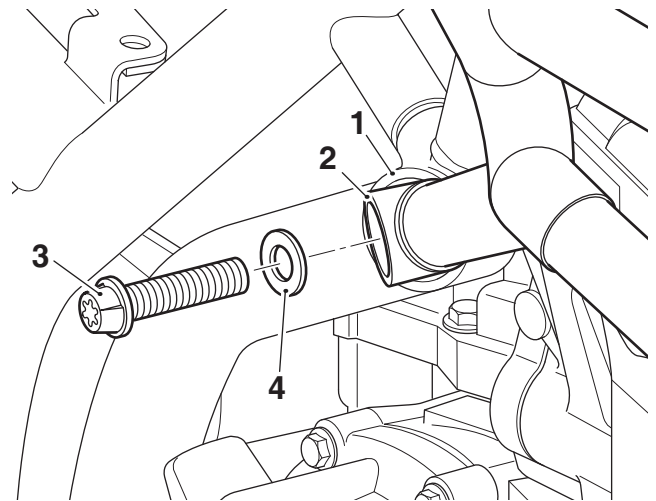
1. Front engine mounting position
2. Upper bracket
3. Spacer, M10 x 5 mm
4. Fixing, M10 x 65 mm
5. Washer, M10
6. Lock nut, M10

14. Remove the rear engine mounting fixing. Retain the fixing for reuse if the motorcycle is to be returned to its original condition.



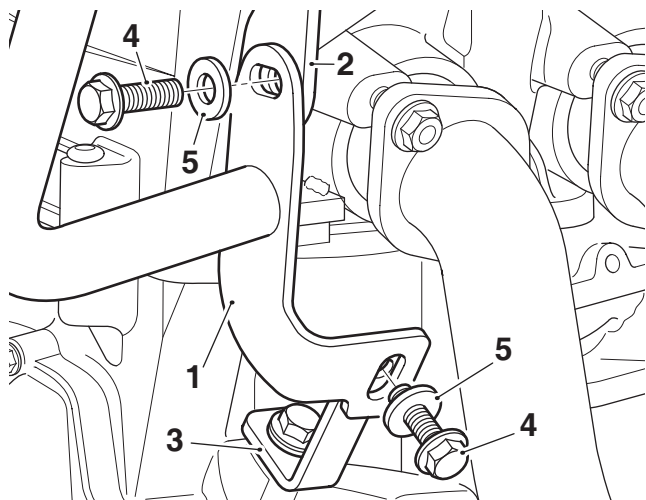
1. Rear engine mounting
2. Fixing

15. Align the rear mounting of the right hand fuel tank protection bar with the rear engine mounting. Fit an M10 x 45 mm fixing and M10 washer from the kit. Do not fully tighten the fixing at this stage.



1. Rear engine mounting
2. Rear mounting, fuel tank protection bar
3. Fixing, M10 x 45 mm
4. Washer, M10

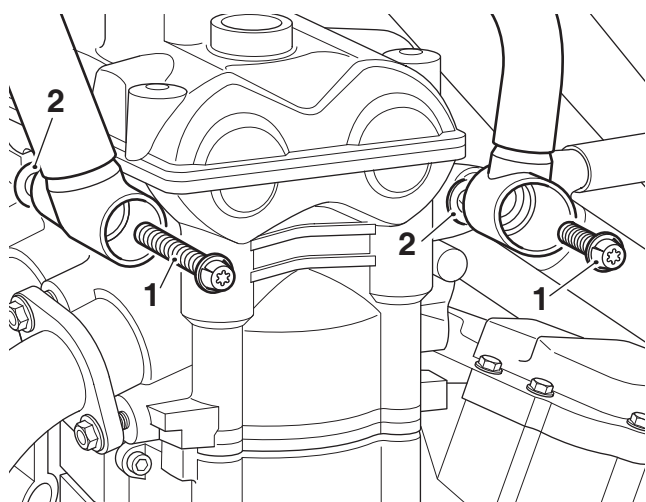
16. Align the front mountings of the fuel tank protection bar with the upper and lower mounting brackets, as shown. Fit M8 x 25 mm fixings and M8 washers from the kit. Do not fully tighten the fixings at this stage.



1. Front mountings, fuel tank protection bar
2. Upper mounting bracket
3. Lower mounting bracket
4. Fixing, M8 x 25 mm
5. Washer, M8

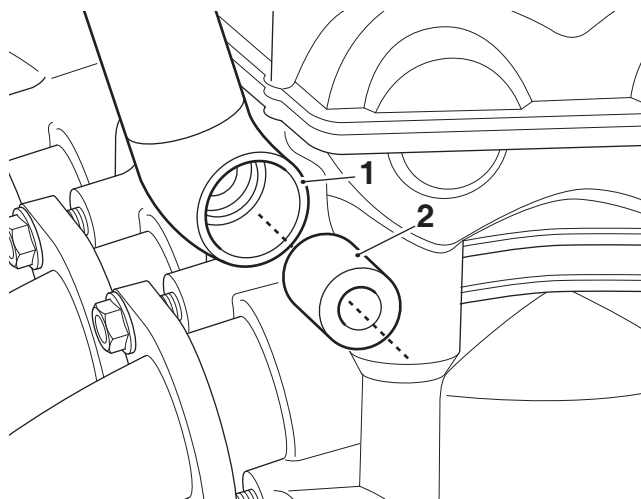
Left Hand Side

17. Remove the front and rear frame to cylinder head fixings, as described in the Service Manual. Retain the fixing for reuse if the motorcycle is to be returned to its original condition. Retain the frame spacers, which are located between the frame and the cylinder head, for reuse. Discard the lock nut.



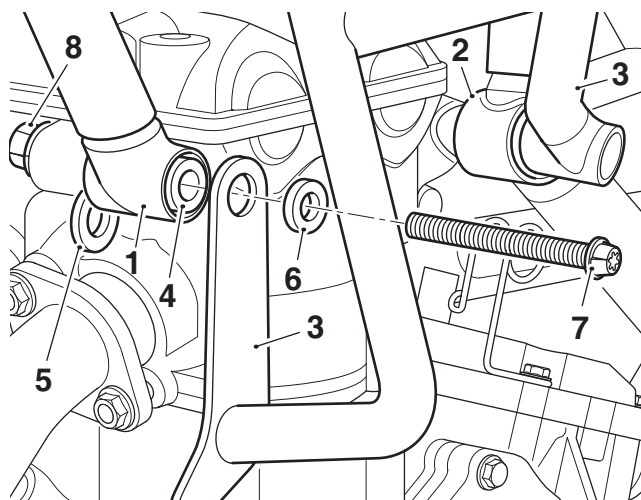
1. Fixings
2. Frame spacers

18. Fit the 22 mm diameter x 33 mm long spacer from the kit into the front frame mounting.



1. Front frame mounting
2. Spacer, 22 mm diameter x 33 mm long

19. Align the left hand fuel tank protection bar upper mountings with the front and rear frame mountings as shown, ensuring the fuel tank protection bar rear mounting locates correctly in the rear frame mount. Fit an M10 x 5 mm spacer, and M10 x 100 mm fixing and an M10 lock nut from the kit together with the original frame spacer to the front mounting position, as shown. Do not fully tighten the fixing at this stage.



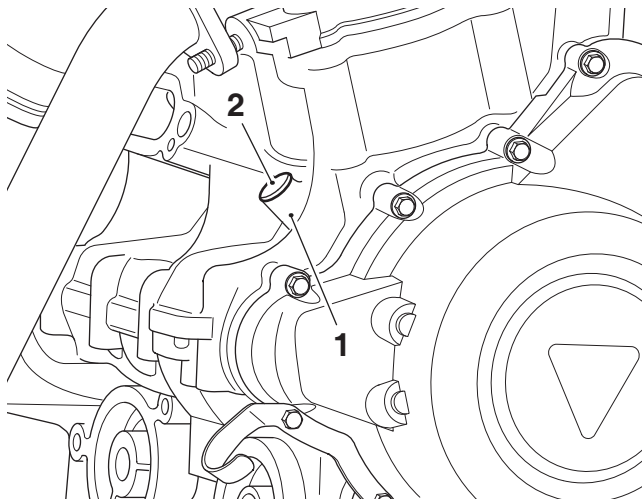
1. Front frame mounting
2. Rear frame mounting
3. Fuel tank protection bar, left hand
4. Spacer 22 mm diameter x 33 mm long
5. Frame spacer
6. Spacer, M10 x 5 mm
7. Fixing, M10 x 100 mm
8. Lock nut, M10

Note:

- For motorcycles without Lower Dresser Bars fitted follow step 20 and 21, then continue from step 24. For motorcycles with Lower Dresser Bars fitted continue from step 22.

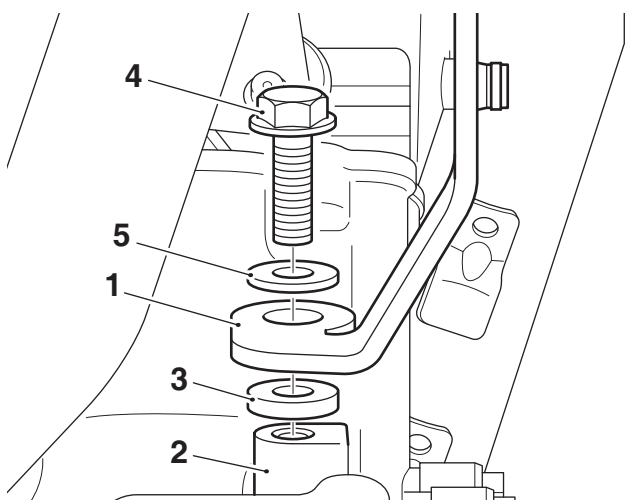
Motorcycles Without Lower Dresser Bars Fitted

20. Remove the blanking plug from the crankcase. Retain the blanking plug for reuse if the motorcycle is to be returned to its original condition.



1. Crankcase
2. Blanking plug

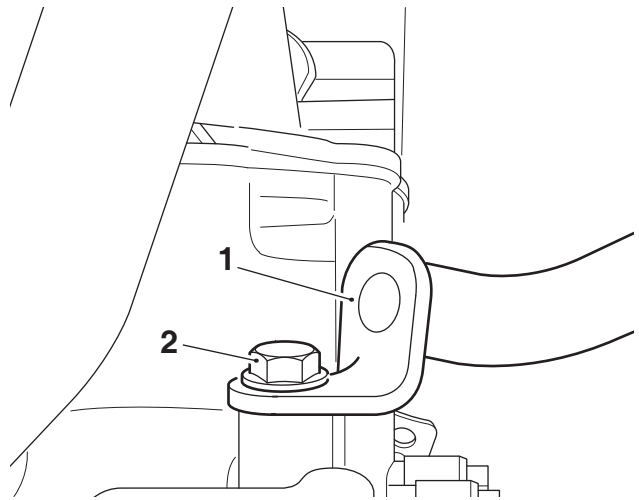
21. Align the fuel tank protection bar lower mounting with the fixing position on the crankcase and fit an M8 x 4 mm spacer from the kit between the protection bar mounting and crankcase, as shown. Fit an M8 x 25 mm fixing and M8 washer from the kit. Do not fully tighten the fixing at this stage.



1. Lower mounting, fuel protection bar
2. Crankcase
3. Spacer, M8 x 4 mm
4. Fixing, M8 x 25 mm
5. Washer

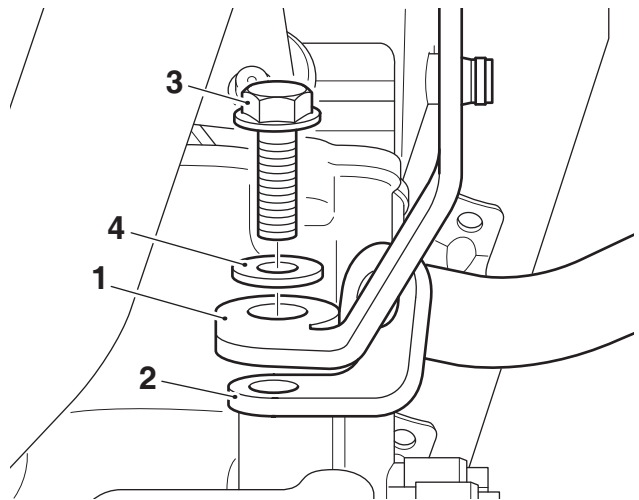
Motorcycles With Lower Dresser Bars Fitted

22. Remove the fixing from the lower dresser bar front mounting. Retain the fixing for reuse if the motorcycle is to be returned to its original condition.



1. Lower dresser bar front mounting
2. Fixing

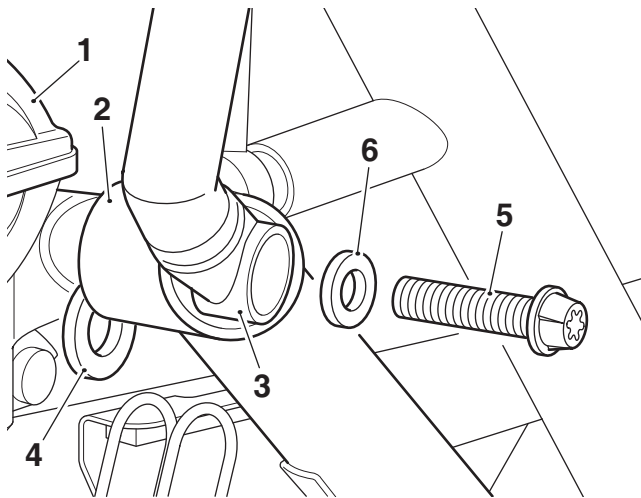
23. Align the fuel tank protection bar lower mounting with the fixing position of the lower dresser bar on the crankcase. Fit an M8 x 25 mm fixing and M8 washer from the kit. Do not fully tighten the fixing at this stage.



1. Lower mounting, fuel protection bar
2. Lower dresser bar
3. Fixing, M8 x 25 mm
4. Washer, M8

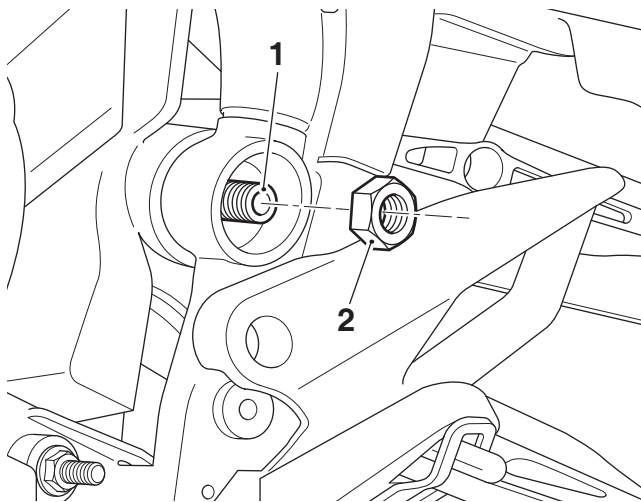
All Motorcycles

24. Fit an M10 x 45 mm and M10 washer from the kit together with the original frame spacer to the rear fuel tank protection bar mounting, as shown. Do not fully tighten the fixing at this stage.



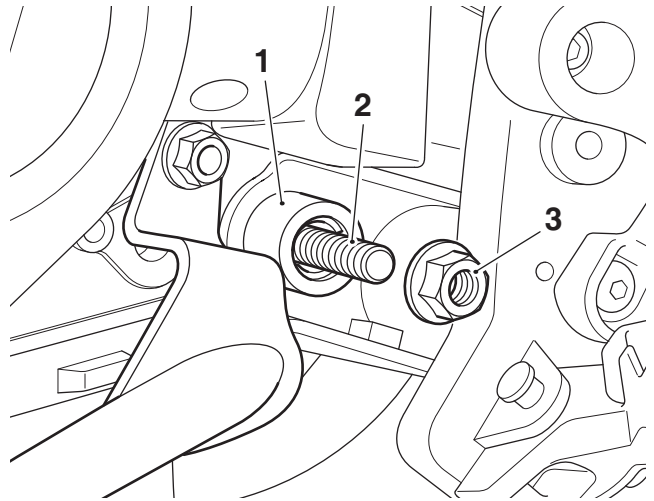
1. Cylinder head
2. Rear frame mounting
3. Fuel tank protection bar rear mounting
4. Frame spacer
5. Fixing, M10 x 45 mm
6. Washer, M10

25. Fit the M16 lock nut from the kit on to the swinging arm spindle. Do not fully tighten the lock nut at this stage.



1. Swinging arm spindle
2. Lock nut, M16

26. Refit the original fixing and washer to the right hand side of the rear lower gearbox mounting and fit the M10 lock nut from the kit to the fixing. Do not fully tighten the fixing at this stage.



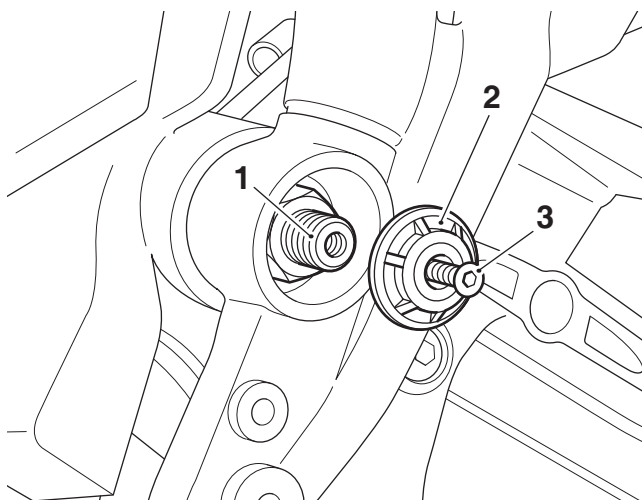
1. Lower rear gearbox mounting
2. Fixing
3. Lock nut, M10

27. Ensure the fuel tank protection bars are aligned correctly on the motorcycle and follow the tightening sequence below for all fixings.

Tightening Sequence:

- Hold the swing arm spindle to prevent rotation and tighten the M16 lock nut to **110 Nm**.
- Tighten the right hand rear cylinder head fixing, M10 x 45 mm to **48 Nm**.
- Tighten the right hand front cylinder head fixing, M10 x 65 mm to **48 Nm**.
- Tighten the left hand rear cylinder head fixing, M10 x 45 mm to **48 Nm**.
- Tighten the left hand front cylinder head fixing, M10 x 100 mm to **48 Nm**.
- Using Triumph Service Tool T3880103, tighten the left hand frame adjuster to **3 Nm**.
- Using Triumph Service Tool T3880103, tighten the right hand frame adjuster to **3 Nm**.
- While holding the lock nut, tighten the rear lower gearbox mounting fixing to **48 Nm**.
- Tighten the M8 x 25 mm fixings to **20 Nm**.

28. Using the original fixings, refit the swinging arm spindle finishers. Tighten the fixings to **3 Nm**.



1. **Swinging arm spindle**
2. **Finisher, left hand side shown**
3. **Fixing**

29. Refit the front side panels to the right hand and left hand side of the motorcycle, as described in the Service Manual.



Warning

If, after fitting this accessory kit, you have any doubt about the performance of any aspect of the motorcycle, contact an authorised Triumph dealer and do not ride the motorcycle until the authorised dealer has declared it fit for use. Riding a motorcycle when there is any doubt as to any aspect of the performance of the motorcycle may result in loss of control of the motorcycle leading to an accident.



Warning

Never ride an accessory-equipped motorcycle at speeds above 80 mph (130 km/h).

The presence of accessories will cause changes in the stability and handling of the motorcycle. Failure to allow for changes in motorcycle stability may lead to loss of control or an accident.

Remember that the 80 mph (130 km/h) limit will be reduced by the fitting of non-approved accessories, incorrect loading, worn tyres, overall motorcycle condition and poor road or weather conditions.



Warning

The motorcycle must not be operated above the legal road speed limit except in closed-course conditions.



Warning

Only operate this Triumph motorcycle at high speed in closed-course, on-road competition or on closed-course racetracks. High-speed operation should only be attempted by riders who have been instructed in the techniques necessary for high-speed riding and are familiar with the motorcycle's characteristics in all conditions.

High-speed operation in any other circumstances is dangerous and will lead to loss of motorcycle control and an accident.