



Accessory Fitting Instructions

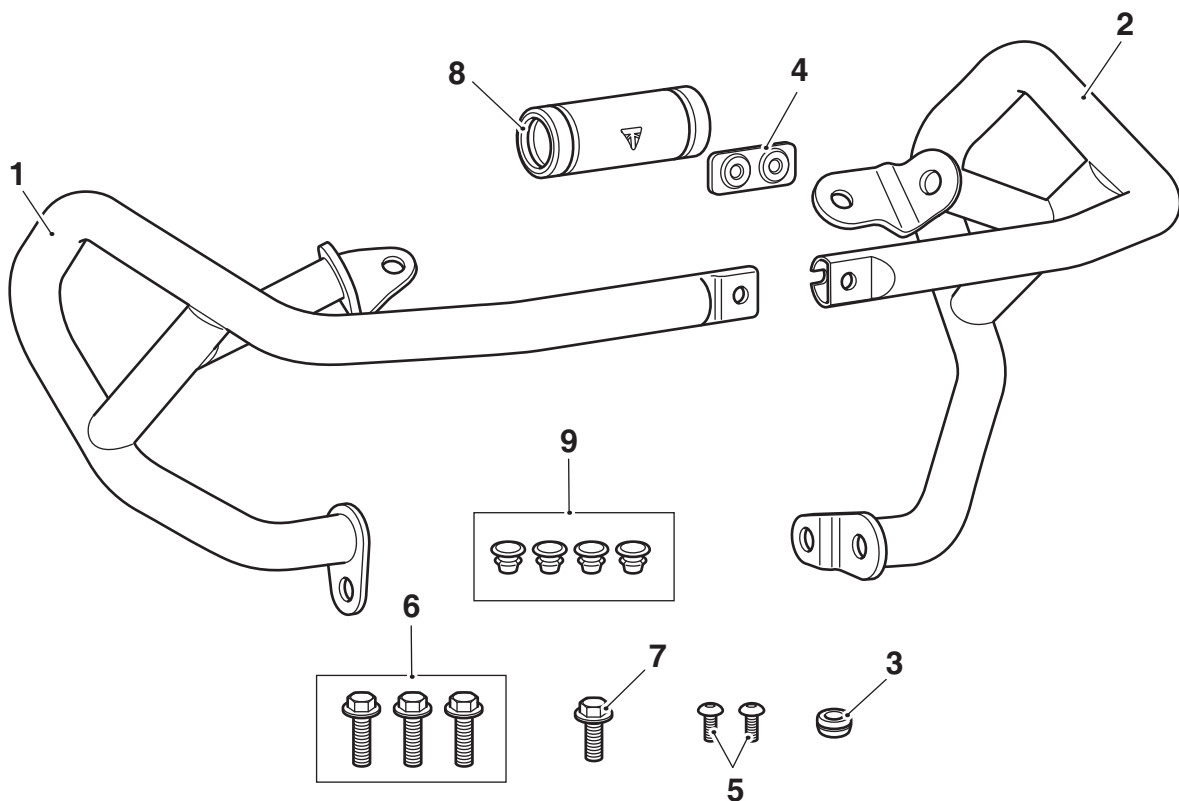
Lower Engine Bar Kit	
Kit Number	Models Affected
A9780053	Tiger 900, Tiger 900 GT, Tiger 900 GT Pro, Tiger 900 GT (LRH), Tiger 900 Rally, Tiger 850 Sport

Thank you for choosing this Triumph genuine accessory kit. This accessory kit is the product of Triumph's use of proven engineering, exhaustive testing, and continuous striving for superior reliability, safety and performance.

Completely read all of these instructions before commencing the installation of the accessory kit in order to become thoroughly familiar with the kit's features and the installation process.

These instructions should be considered a permanent part of your accessory kit, and should remain with it even if your accessory equipped motorcycle is subsequently sold.

Parts Supplied:



1. Engine bar, right hand	1 off	6. Fixing, M8 x 25 mm	3 off
2. Engine bar, left hand	1 off	7. Fixing, M8 x 20 mm	1 off
3. Spacer	1 off	8. Rubber sleeve	1 off
4. Centre bar	1 off	9. Plastic cap, 12 mm	4 off
5. Fixing, M6 x 12 mm	2 off		



Warning

Fit only genuine Triumph accessories to those models approved by Triumph as listed in the associated Triumph fitting instructions. The accessory kits covered in this instruction are designed for use on specific models of Triumph motorcycle. The accessory kits and the models applicable are listed at the start of the instruction. They should never be fitted to any other Triumph model or to any other manufacturer's motorcycle. Fitting an accessory kit to a Triumph model not listed, or to any other manufacturer's motorcycle will affect the performance, stability and handling of the motorcycle. This may affect the rider's ability to control the motorcycle and could result in an accident causing severe injuries or death.



Warning

Always have Triumph approved parts, accessories and conversions fitted by a trained technician of an authorised Triumph dealer. The fitment of parts, accessories and conversions by a technician who is not of an authorised Triumph dealer may affect the handling, stability or other aspects of the motorcycle's operation which may result in loss of motorcycle control and an accident.



Warning

Throughout this operation, ensure that the motorcycle is stabilised and adequately supported to prevent risk of injury from the motorcycle falling.



Warning

A torque wrench of known accurate calibration must be used when fitting this accessory kit. Failure to tighten any of the fasteners to the correct torque specification may affect motorcycle performance, handling and stability. This may result in loss of motorcycle control and an accident.



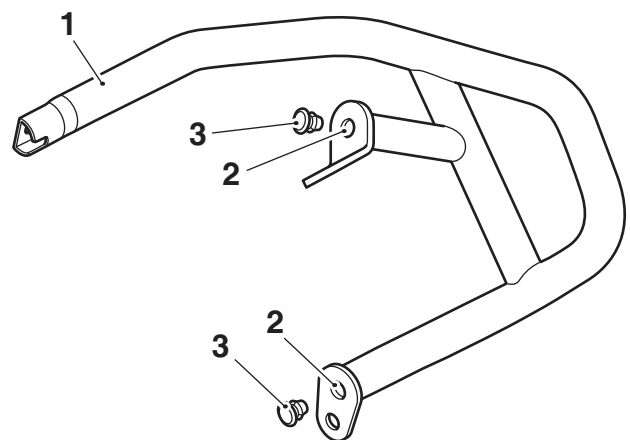
Warning

If the engine has recently been running, the exhaust system will be hot. Before working on or near the exhaust system, allow sufficient time for the system to cool, as touching any part of a hot exhaust could cause burn injuries.

Note:

- Triumph offers a broad range of approved genuine accessories for your motorcycle. We cannot therefore cover all possible equipment variations in these instructions. For removal and installation of Triumph Genuine Accessories, always refer to the instructions supplied with the respective accessory kit. To obtain additional copies of any Triumph accessory instructions, visit www.triumphinstructions.com or contact your authorised Triumph dealer.

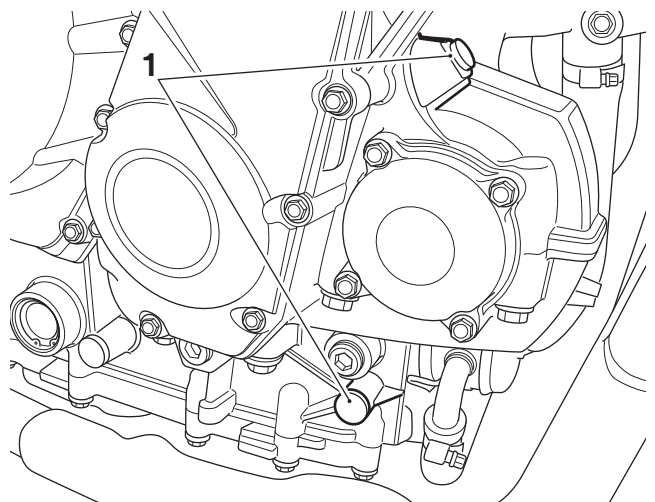
- Collect the four 12 mm plastic caps from the kit, locate the caps into the left hand and right hand engine bar drain holes as shown below.



- Engine bar, right hand shown
- Drain holes
- Plastic caps, 12 mm

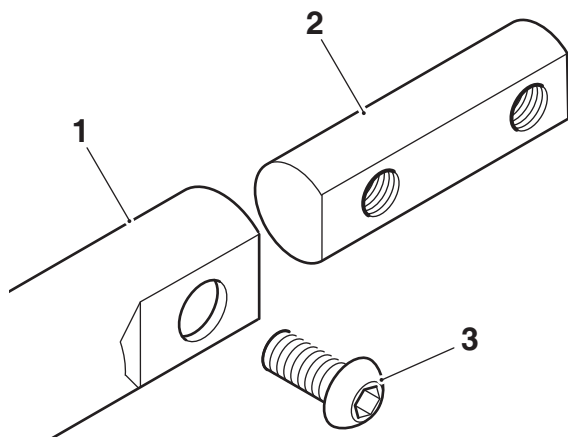
Right Hand Side

- Remove the two crankcase blanking plugs shown. Retain the blanking plugs for re-use if the motorcycle is to be returned to its original condition.



- Blanking plugs

3. Install the centre bar to the right hand engine bar and secure using an M6 x 12 mm fixing. Do not fully tighten the fixing at this stage.

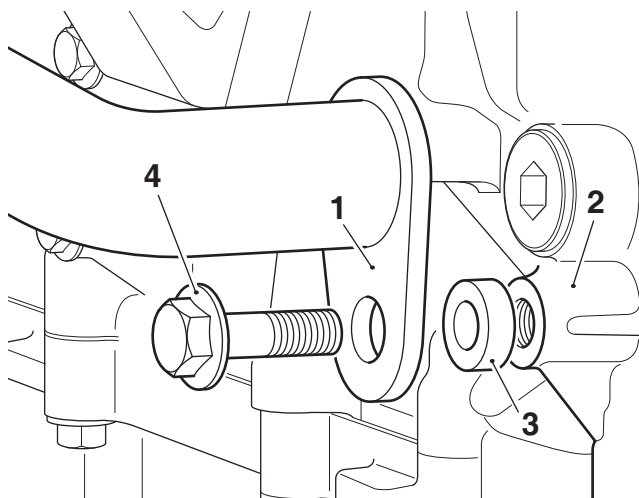


1. Engine bar, right hand

2. Centre bar

3. Fixing, M6 x 12 mm

4. Collect the spacer from the kit and place in between the engine bar lower mounting and the crankcase mounting boss. Secure the engine bar lower mounting using an M8 x 25 mm fixing from the kit. Do not fully tighten the fixing at this stage.



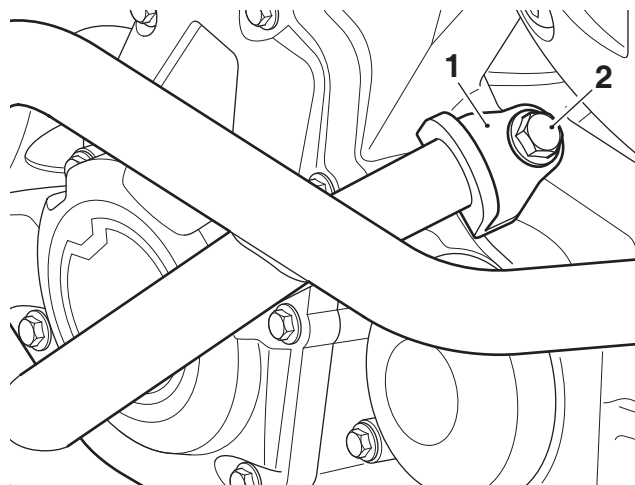
1. Engine bar lower mounting

2. Crankcase mounting boss

3. Spacer

4. Fixing, M8 x 25 mm

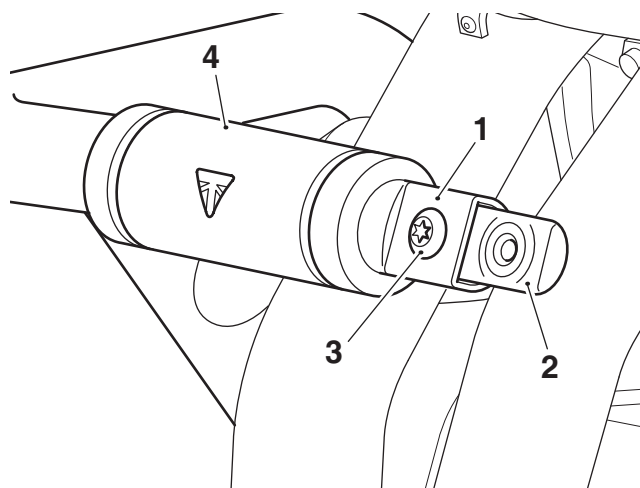
5. Align the engine bar upper mounting to the crankcase mounting boss and secure using an M8 x 25 mm fixing from the kit. Do not fully tighten the fixing at this stage.



1. Engine bar upper mounting

2. Fixing, M8 x 25 mm

6. Slide the rubber sleeve from the kit onto the centre bar past the M6 x 12 mm fixing.



1. Engine bar

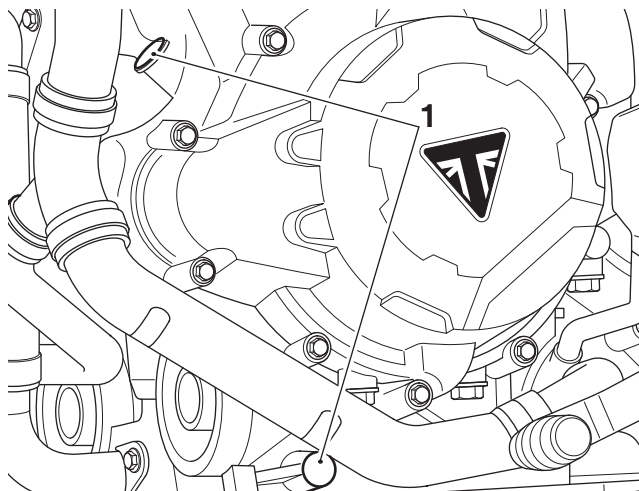
2. Centre bar

3. Fixing, M6 x 12 mm

4. Rubber sleeve

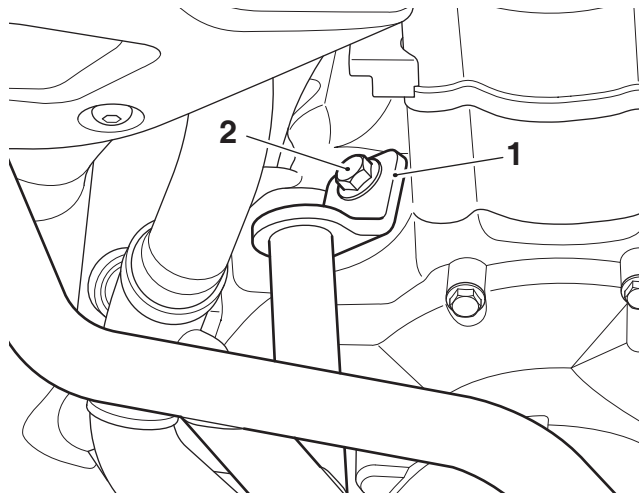
Left Hand Side

7. Remove the two crankcase blanking plugs shown. Retain the blanking plugs for re-use if the motorcycle is to be returned to its original condition.



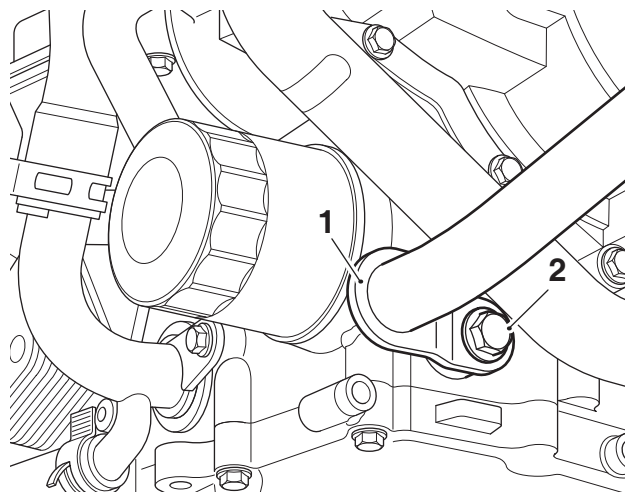
1. Blanking plugs

8. Slide the left hand engine bar over the centre bar and position to the crankcase mounting bosses. Secure the engine bar upper mounting with an M8 x 25 mm fixing from the kit. Do not fully tighten the fixing at this stage.



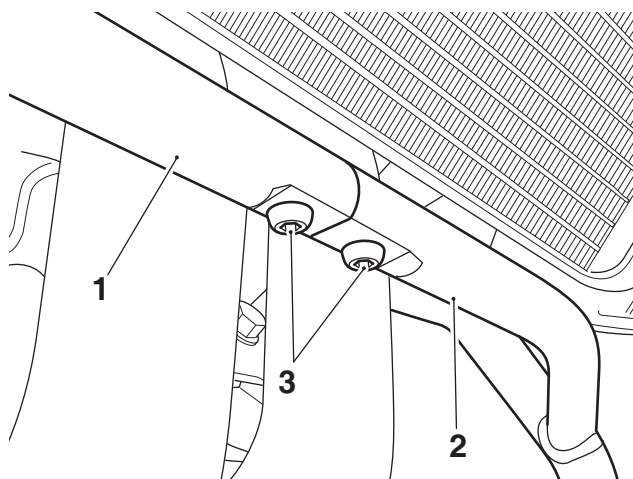
1. Engine bar upper mounting
2. Fixing, M8 x 25 mm

9. Secure the engine bar lower mounting with the M8 x 20 mm fixing from the kit. Do not fully tighten the fixing at this stage.



1. Engine bar lower mounting
2. Fixing, M8 x 20 mm

10. Secure the left hand engine bar to the centre bar using an M6 x 12 mm fixing from the kit. Do not fully tighten the fixing at this stage.

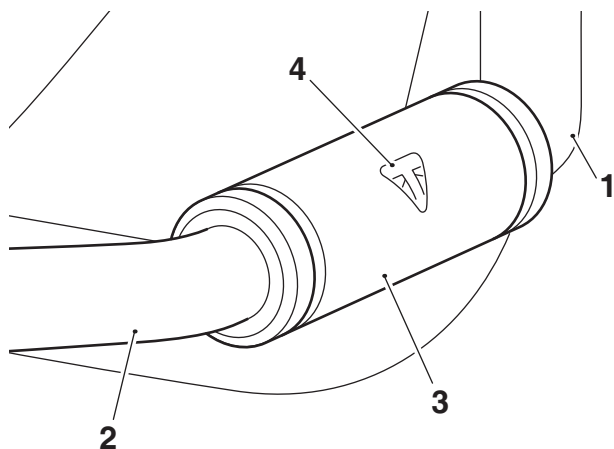


1. Right hand engine bar
2. Left hand engine bar
3. Fixing, M6 x 12 mm

Left Hand and Right Hand Side

11. Tighten the right hand engine bar M8 x 25 mm fixings to **15 Nm**.
12. Tighten the left hand engine bar M8 x 25 mm and M8 x 20 mm fixings to **15 Nm**.
13. Tighten the centre bar M6 x 12 mm fixings to **6 Nm**.

14. Position the rubber sleeve centrally over the join between the left hand and right hand dresser bar cross tubes. Orientate the rubber cover to position the logo at the front, as shown.



- 1. Dresser bar cross tube, left hand
- 2. Dresser bar cross tube, right hand
- 3. Rubber sleeve
- 4. Logo



Warning

After fitting the accessory kit the motorcycle will exhibit new handling characteristics. Operate the motorcycle in a safe area free from traffic to gain familiarity with any new characteristics. Operation of the motorcycle when not familiar with any new handling characteristics may result in loss of motorcycle control and an accident.



Warning

If, after fitting this accessory kit, you have any doubt about the performance of any aspect of the motorcycle, contact an authorised Triumph dealer and do not ride the motorcycle until the authorised dealer has declared it fit for use. Riding a motorcycle when there is any doubt as to any aspect of the performance of the motorcycle may result in loss of motorcycle control and an accident.



Warning

Never ride an accessory-equipped motorcycle at speeds above 80 mph (130 km/h).

The presence of accessories will cause changes in the stability and handling of the motorcycle. Failure to allow for changes in motorcycle stability may result in loss of motorcycle control and an accident.

Remember that the 80 mph (130 km/h) limit will be reduced by the fitting of non-approved accessories, incorrect loading, worn tyres, overall motorcycle condition and poor road or weather conditions.



Warning

The motorcycle must not be operated above the legal road speed limit except in closed-course conditions.



Warning

Only operate this Triumph motorcycle at high speed in closed-course, on-road competition or on closed-course racetracks. High-speed operation should only be attempted by riders who have been instructed in the techniques necessary for high-speed riding and are familiar with the motorcycle's characteristics in all conditions.

High-speed operation in any other circumstances is dangerous and may result in loss of motorcycle control and an accident.