



## Accessory Fitting Instructions

Upper Engine Bar Kit	
Kit Number	Models Affected
A9780051	Tiger 900, Tiger 900 GT, Tiger 900 GT Pro, Tiger 900 GT (LRH), Tiger 900 Rally, Tiger 900 Rally Pro

**Note:**

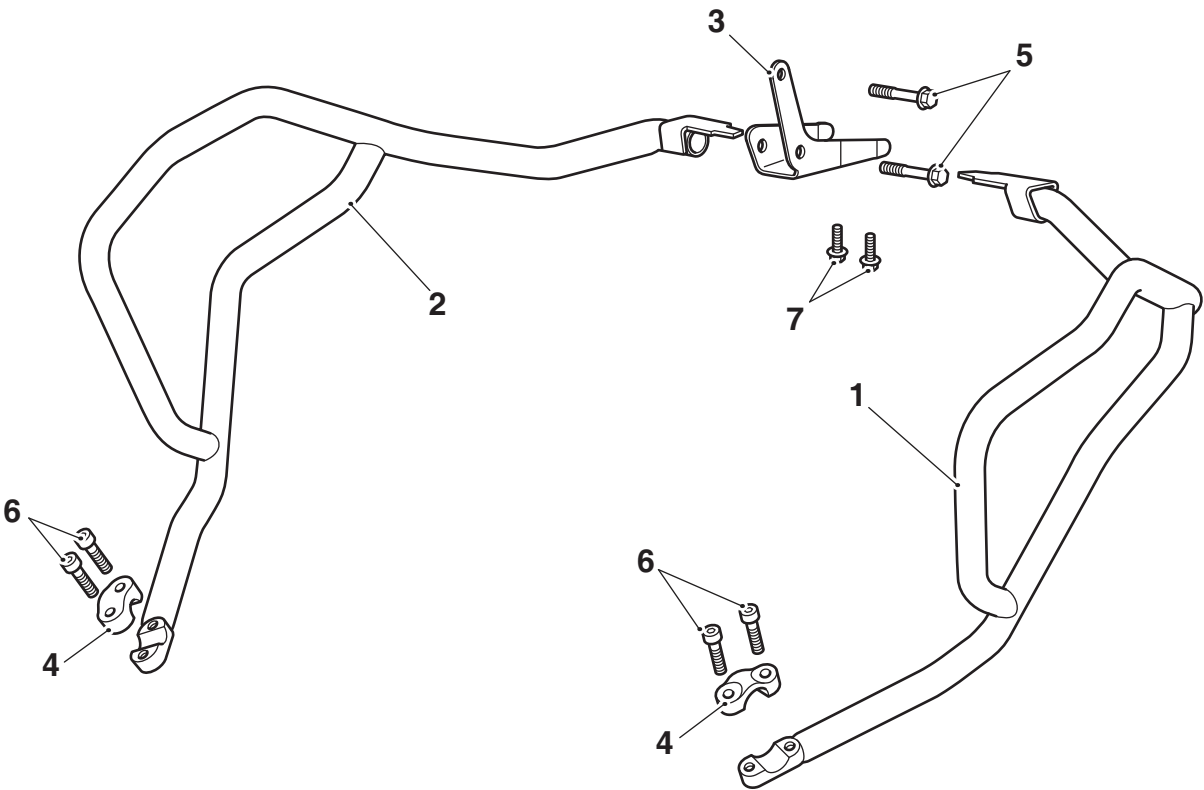
- **The Upper Engine Bar Kit list above can only be fitted to motorcycles which have lower engine bars installed.**

Thank you for choosing this Triumph genuine accessory kit. This accessory kit is the product of Triumph's use of proven engineering, exhaustive testing, and continuous striving for superior reliability, safety and performance.

Completely read all of these instructions before commencing the installation of the accessory kit in order to become thoroughly familiar with the kit's features and the installation process.

These instructions should be considered a permanent part of your accessory kit, and should remain with it even if your accessory equipped motorcycle is subsequently sold.

Parts Supplied



1. Engine bar, right hand	1 off	5. Fixing, M8 x 55 mm	2 off
2. Engine bar, left hand	1 off	6. Fixing, M8 x 30 mm	4 off
3. Front mounting bracket	1 off	7. Fixing, M6 x 20 mm	2 off
4. Clamp	2 off		



## Warning

The accessory kits covered in this instruction are designed for use on specific models of Triumph motorcycle. The accessory kits and the models applicable are listed at the start of the instruction. They should not be fitted to any other Triumph model or to any other manufacturer's motorcycle. Fitting an accessory kit to a Triumph model not listed, or to any other manufacturer's motorcycle will affect the performance, stability and handling of the motorcycle. This may affect the rider's ability to control the motorcycle and could cause an accident.



## Warning

Always have Triumph approved parts, accessories and conversions fitted by a trained technician of an authorised Triumph dealer. The fitment of parts, accessories and conversions by a technician who is not of an authorised Triumph dealer may affect the handling, stability or other aspects of the motorcycle's operation which may result in loss of motorcycle control and an accident.



## Warning

Throughout this operation, ensure that the motorcycle is stabilised and adequately supported to prevent risk of injury from the motorcycle falling.



## Warning

A torque wrench of known accurate calibration must be used when fitting this accessory kit. Failure to tighten any of the fasteners to the correct torque specification may affect motorcycle performance, handling and stability. This may result in loss of motorcycle control and an accident.



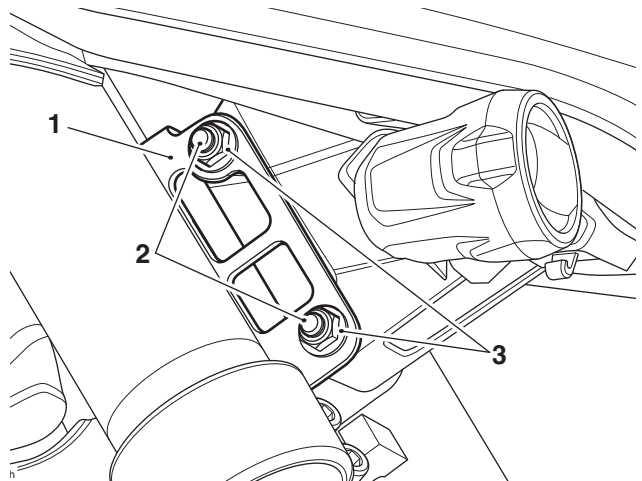
## Warning

If the engine has recently been running, the exhaust system will be hot. Before working on or near the exhaust system, allow sufficient time for the system to cool, as touching any part of a hot exhaust could cause burn injuries.

### Note:

- Triumph offers a broad range of approved genuine accessories for your motorcycle. We cannot therefore cover all possible equipment variations in these instructions. For removal and installation of Triumph Genuine Accessories, always refer to the instructions supplied with the respective accessory kit. To obtain additional copies of any Triumph accessory instructions, visit [www.triumphinstructions.com](http://www.triumphinstructions.com) or contact your authorised Triumph dealer.
- Ensure that the motorcycle Service Manual is available for reference during the fitting of this accessory kit.

- Remove the front beak as described in the Service Manual.
- Remove the two lock nuts and fixings from the front subframe mounting. Retain the lock nuts for reuse. Retain the fixings for reuse if the motorcycle is to be returned to its original condition.

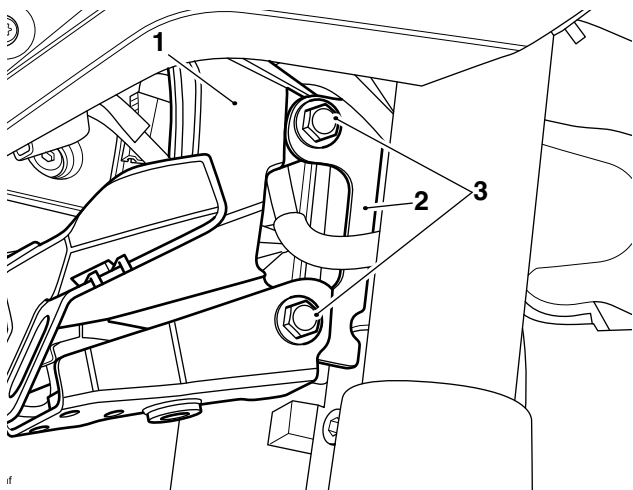


1. Front subframe mounting
2. Fixings
3. Lock nuts

### Note:

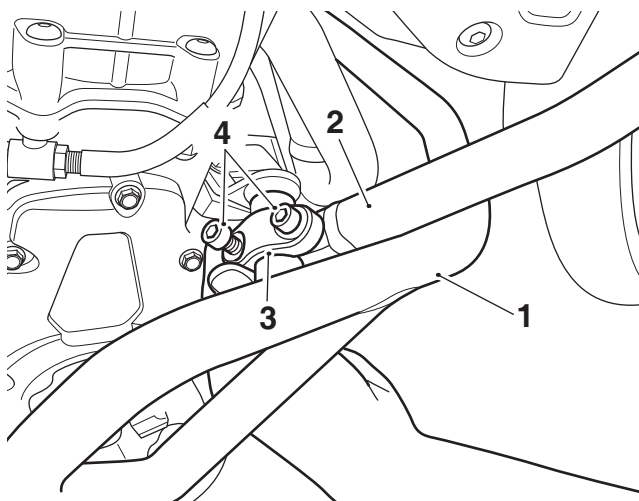
- Lock nuts can be re-used providing resistance can be felt when the locking portion passes over the thread of the fixing. Always use the correct replacement lock nut as recommended in the Triumph parts catalogue.

- Position the front mounting bracket on to the subframe mounting as shown. Fit the two M8 x 55 mm fixings from the kit with the original lock nuts. Tighten the fixings to **30 Nm**.



- Subframe mounting
- Front mounting bracket
- Fixings M8 x 55 mm

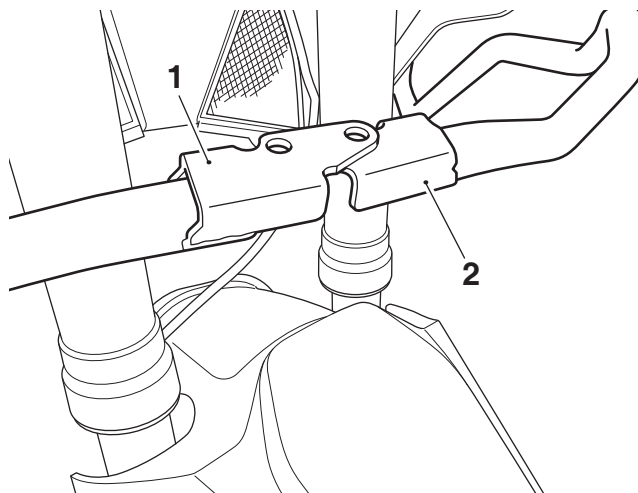
- Position the right hand upper engine bar on to the lower engine bar on the right hand side of the motorcycle as shown below. Fit a clamp and two M8 x 30 mm fixings from the kit to retain the upper engine bar. Do not fully tighten the fixings at this stage.



- Lower engine bar
- Upper engine bar, right hand
- Clamp
- Fixings, M8 x 30 mm

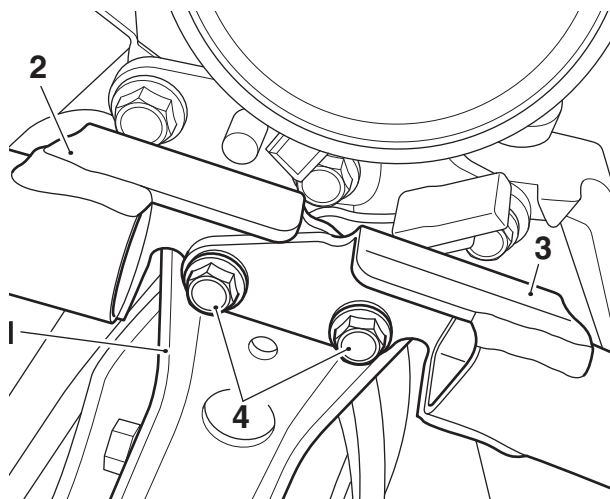
- Repeat step 4 for the left hand upper engine bar.

- Position the left hand upper engine bar front mounting under the right hand upper engine bar front mounting, as shown.



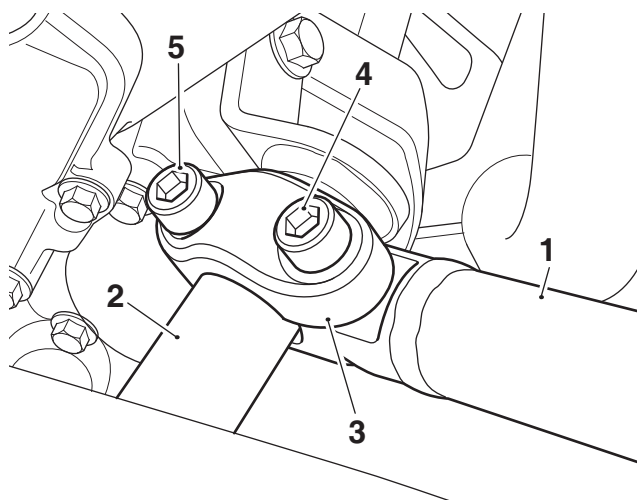
- Upper engine bar, right hand
- Upper engine bar, left hand

- Align the right hand and left hand upper engine bars with the front mounting bracket and fit the M6 x 20 mm fixings from the kit. Tighten the fixings to **14 Nm**.



- Front mounting bracket
- Upper engine bar, right hand
- Upper engine bar, left hand
- Fixings, M6 x 20 mm

8. Tighten the right hand engine bar clamp front fixing first to **20 Nm**, then tighten the clamp rear fixing to **20 Nm**.



- 1. Upper engine bar
- 2. Lower engine bar
- 3. Clamp
- 4. Fixing, front
- 5. Fixing, rear

9. Repeat step 8 for the left hand engine bar clamp fixings.
10. Refit the front beak, as described in the Service Manual.



### Warning

If, after fitting this accessory kit, you have any doubt about the performance of any aspect of the motorcycle, contact an authorised Triumph dealer and do not ride the motorcycle until the authorised dealer has declared it fit for use. Riding a motorcycle when there is any doubt as to any aspect of the performance of the motorcycle may result in loss of control of the motorcycle leading to an accident.



### Warning

Never ride an accessory-equipped motorcycle at speeds above 80 mph (130 km/h).

The presence of accessories will cause changes in the stability and handling of the motorcycle. Failure to allow for changes in motorcycle stability may lead to loss of control or an accident.

Remember that the 80 mph (130 km/h) limit will be reduced by the fitting of non-approved accessories, incorrect loading, worn tyres, overall motorcycle condition and poor road or weather conditions.



### Warning

The motorcycle must not be operated above the legal road speed limit except in closed-course conditions.



### Warning

Only operate this Triumph motorcycle at high speed in closed-course, on-road competition or on closed-course racetracks. High-speed operation should only be attempted by riders who have been instructed in the techniques necessary for high-speed riding and are familiar with the motorcycle's characteristics in all conditions.

High-speed operation in any other circumstances is dangerous and will lead to loss of motorcycle control and an accident.