



## Accessory Fitting Instructions

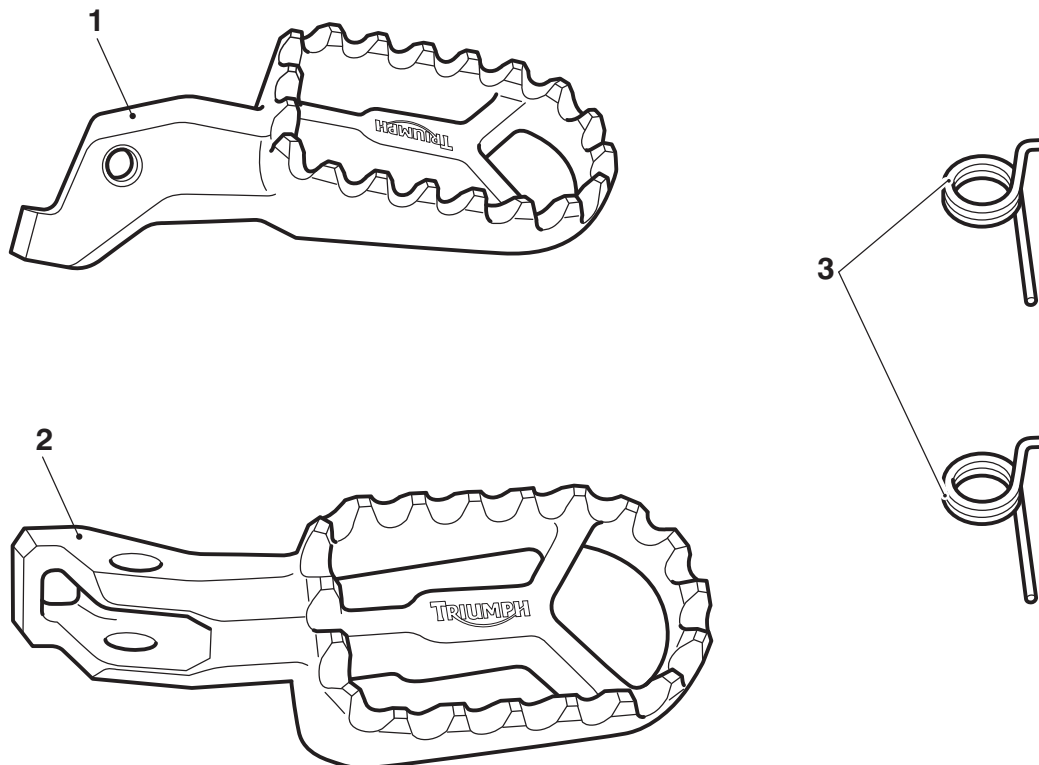
CNC Machined Footpegs - Grey	
Kit Number	Models Affected
A9770172	Street Scrambler, Scrambler 900
A9770240 A9770243 A9770251	Tiger 1200 GT, Tiger 1200 GT Pro, Tiger 1200 Rally Pro, Tiger 1200 GT Explorer, Tiger 1200 Rally Explorer, Tiger 900, Tiger 900 GT, Tiger 900 GT Pro, Tiger 900 GT (LRH), Tiger 900 GT Aragon Edition, Tiger 900 Rally, Tiger 900 Rally Pro, Tiger 900 Rally Aragon Edition, Tiger 850 Sport, Scrambler 1200 XC from VIN AE9098, Scrambler 1200 XE from VIN AC8499

Thank you for choosing this Triumph genuine accessory kit. This accessory kit is the product of Triumph's use of proven engineering, exhaustive testing, and continuous striving for superior reliability, safety and performance.

Completely read all of these instructions before commencing the installation of the accessory kit in order to become thoroughly familiar with the kit's features and the installation process.

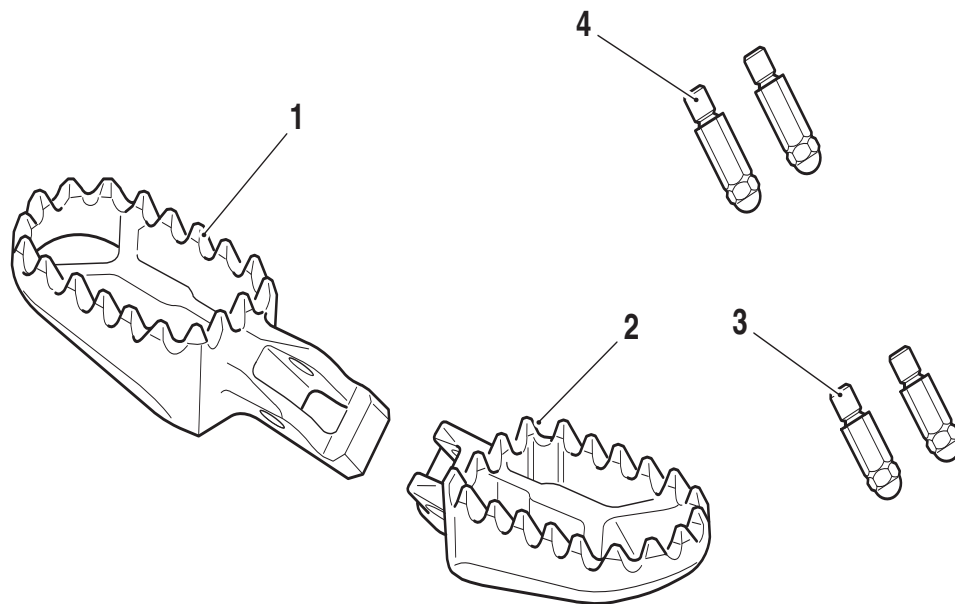
These instructions should be considered a permanent part of your accessory kit, and should remain with it even if your accessory equipped motorcycle is subsequently sold.

### Parts Supplied: A9770172



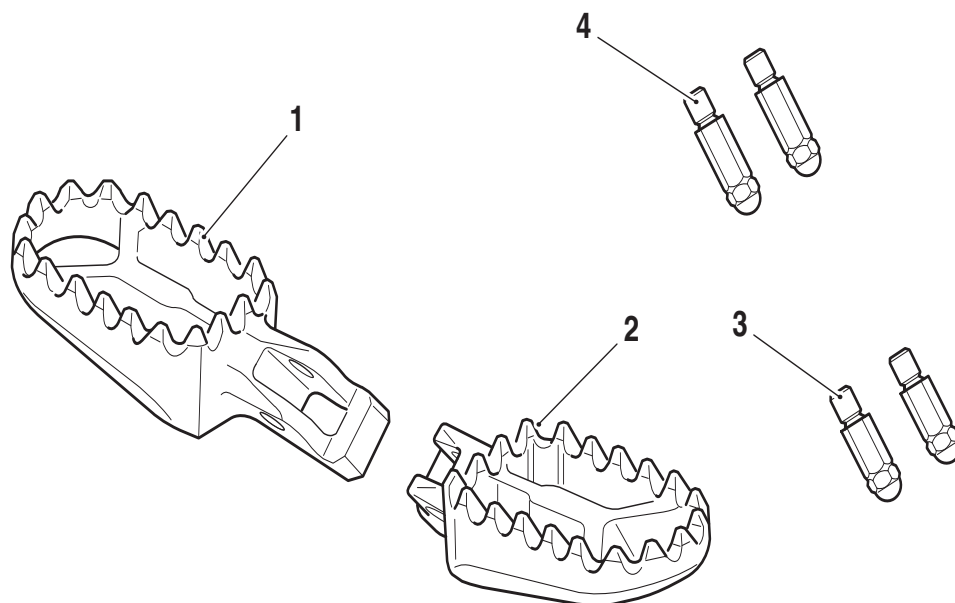
1. Footpeg, left hand	1 off	3. Return spring	2 off
2. Footpeg, right hand	1 off		

**Parts Supplied: A9770240, A9770243**



1. Footpeg, left hand	1 off	3. Bank angle indicator, 25mm	2 off
2. Footpeg, right hand	1 off	4. Bank angle indicator, 30mm	2 off

**Parts Supplied: A9770251**



1. Footpeg, left hand	1 off	3. Bank angle indicator, 20mm	2 off
2. Footpeg, right hand	1 off	4. Bank angle indicator, 25mm	2 off



## Warning

Fit only genuine Triumph accessories to those models approved by Triumph as listed in the associated Triumph fitting instructions. The accessory kits covered in this instruction are designed for use on specific models of Triumph motorcycle. The accessory kits and the models applicable are listed at the start of the instruction. They should never be fitted to any other Triumph model or to any other manufacturer's motorcycle. Fitting an accessory kit to a Triumph model not listed, or to any other manufacturer's motorcycle will affect the performance, stability and handling of the motorcycle. This may affect the rider's ability to control the motorcycle and could result in an accident causing severe injuries or death.



## Warning

Always have Triumph approved parts, accessories and conversions fitted by a trained technician of an authorised Triumph dealer. The fitment of parts, accessories and conversions by a technician who is not of an authorised Triumph dealer may affect the handling, stability or other aspects of the motorcycle's operation which may result in loss of motorcycle control and an accident.



## Warning

Make sure the motorcycle is supported. A correctly supported motorcycle will help prevent it from falling. An unstable motorcycle may fall, causing injury to the operator or damage to the motorcycle.



## Warning

A torque wrench of known accurate calibration must be used when fitting this accessory kit. Failure to tighten any of the fasteners to the correct torque specification may affect motorcycle performance, handling and stability. This may result in loss of motorcycle control and an accident.

### Note:

- Triumph offers a broad range of approved genuine accessories for your motorcycle. We cannot therefore cover all possible equipment variations in these instructions. For removal and installation of Triumph Genuine Accessories, always refer to the instructions supplied with the respective accessory kit. To obtain additional copies of any Triumph accessory instructions, visit [www.triumphinstructions.com](http://www.triumphinstructions.com) or contact your authorised Triumph dealer.

## Street Scrambler and Scrambler 900

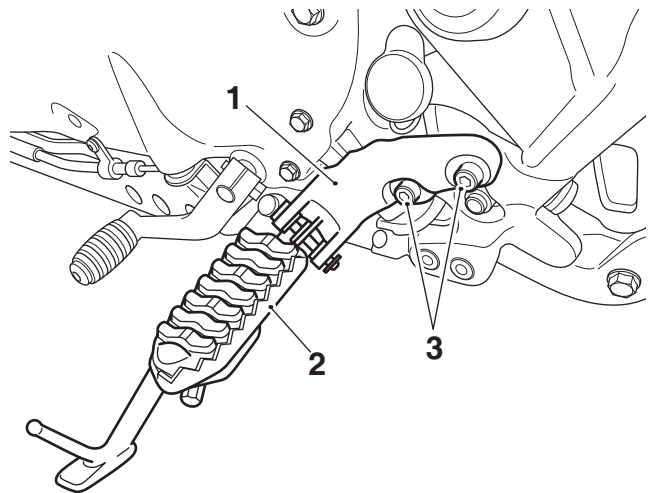
### Removal

#### Right Hand Side

- Remove the E-clip at the lower end of the pivot pin for the right hand footpeg and remove the pivot pin. Retain the E-clip and pivot pin for reuse.
- Remove the footpeg and its return spring. Retain the footpeg and return spring for reuse if the motorcycle is to be returned to its original condition.

#### Left Hand Side

- Remove the two fixings securing the left hand footpeg mounting and remove the footpeg mounting and footpeg assembly from the motorcycle. Retain the fixings for reuse.



- Footpeg mounting
- Footpeg
- Fixings

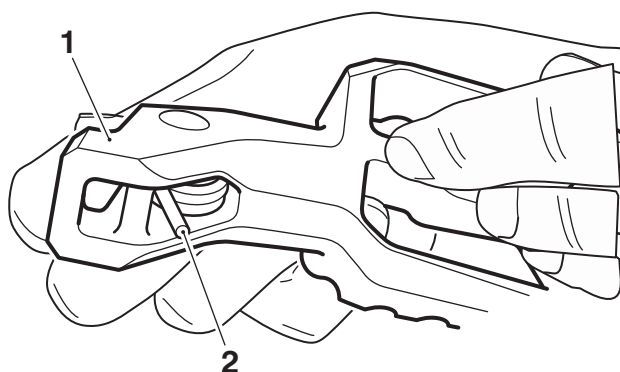
4. Remove the E-clip at the lower end of the pivot pin for the left hand footpeg and remove the pivot pin. Retain the E-clip and pivot pin for reuse.
5. Remove the footpeg and its return spring. Retain the footpeg and return spring for reuse if the motorcycle is to be returned to its original condition.

2. Align the CNC machined footpeg and return spring assembly to the footpeg mounting on the motorcycle. Make sure the bent end of the spring is positioned in the hole as shown below (footpeg removed for clarity).

## Installation

### Right hand side

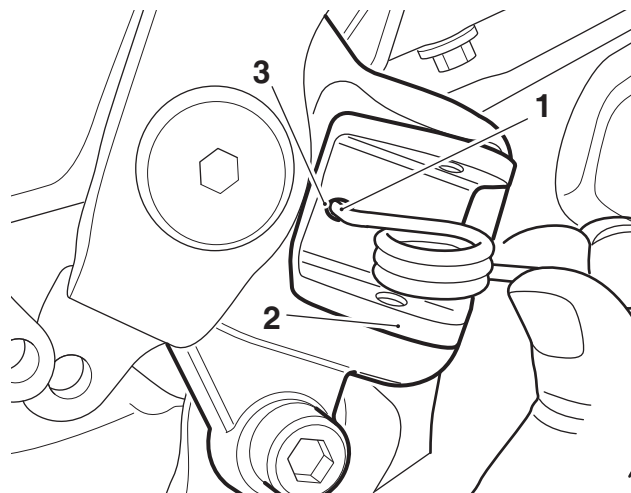
1. Fit the return spring to the right hand CNC machined footpeg making sure that the straight end of the spring is positioned as shown below.



1. CNC machined footpeg
2. Return spring, straight end

#### Note:

- Align the bent end of the return spring to the hole in the CNC machined footpeg mounting. The bent end of the return spring must rest in the hole of the CNC machined footpeg mounting.

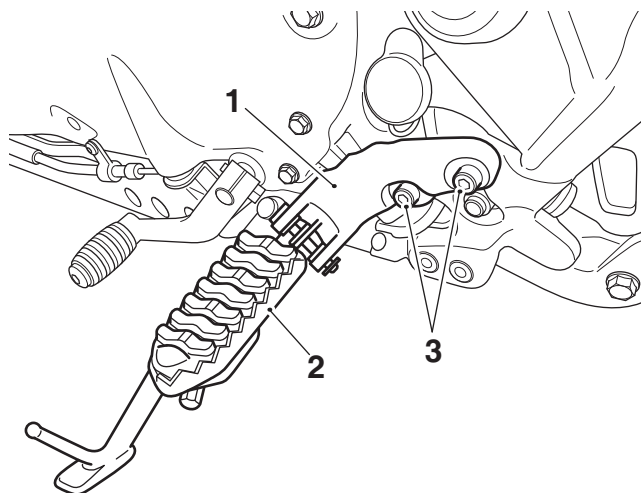


1. Return spring, bent end
2. CNC machined footpeg mounting
3. Hole in the footpeg mounting

3. Refit the pivot pin and secure with the original E-clip.

### Left hand side

4. Repeat steps 1 to 3 for the left hand footpeg.
5. Refit the footpeg mounting and footpeg assembly to the motorcycle and secure with the original fixings. Tighten the fixings to **24 Nm**.



1. Footpeg mounting
2. Footpeg
3. Fixings

## Scrambler 1200, Tiger 1200, Tiger 850 Sport, Tiger 900 Models

### Removal

#### Right Hand Side

1. Remove the E-clip at the lower end of the pivot pin for the right hand footpeg and remove the pivot pin. Retain the E-clip and pivot pin for reuse.
2. Remove the footpeg and its return spring. Retain the return spring. Retain the footpeg for reuse if the motorcycle is to be returned to its original condition.

#### Left Hand Side

3. Repeat steps 1 – 2 on the left hand footpeg.

### Installation

#### Right hand side



### Warning

The Bank angle indicator, 25mm (item 3 in the kit) must be used for Tiger 900, Tiger 850 and Scrambler 1200.

The Bank angle indicator, 20mm or 25mm can be used for Tiger 1200.

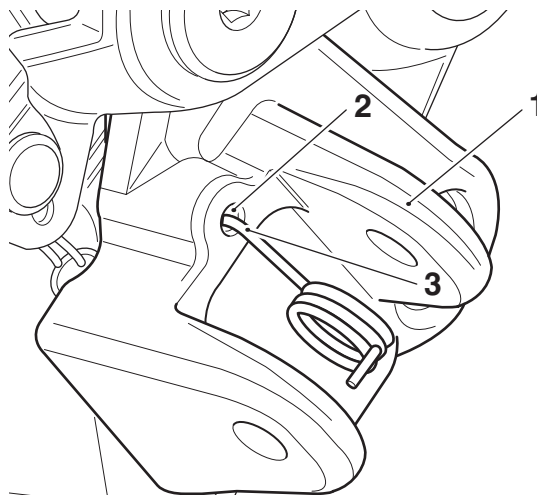
Use of a motorcycle with incorrect bank angle indicators (too short) will allow the motorcycle to be banked to an unsafe angle. Banking to an unsafe angle may cause instability, loss of motorcycle control and an accident.

1. Take a bank angle indicator from the kit and assemble it into the new footrest. Tighten to **9 Nm**.

#### Note:

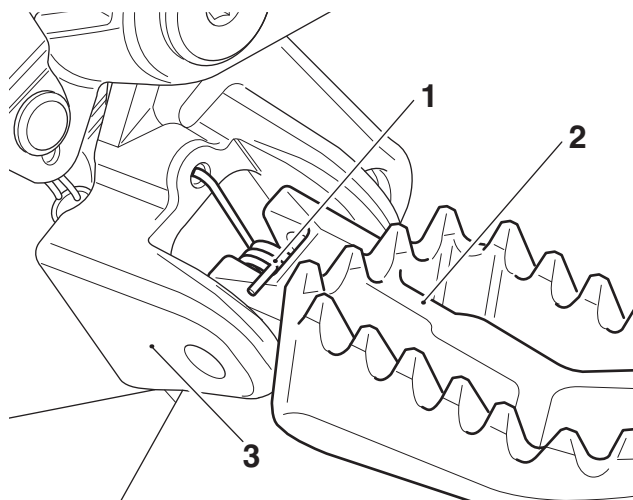
- **The ninety degree bend in the return spring must rest in the hole on the footpeg mounting.**

2. Align the return spring to the footpeg mounting in the orientation shown below.



1. Footpeg mounting
2. Footpeg return spring mounting hole
3. Return spring, bent end

3. With the end of the return spring located in the hole in the footpeg mounting, position the footpeg to the footpeg mounting.



1. Footpeg return spring
2. Footpeg
3. Footpeg mounting

4. Refit the pivot pin and secure with the original E-clip.

#### Left Hand Side

5. Repeat steps 1 to 4 for the left hand footpeg.



### Warning

If, after fitment of this accessory kit, you have any doubt about the performance of any aspect of the motorcycle, contact an authorised Triumph dealer and do not ride the motorcycle until the authorised dealer has declared it fit for use. Riding a motorcycle when there is any doubt as to any aspect of the performance of the motorcycle may result in loss of motorcycle control and an accident.



### Warning

Never ride an accessory equipped motorcycle at speeds above 80 mph (130 km/h).

The presence of accessories will cause changes in the stability and handling of the motorcycle. Failure to allow for changes in motorcycle stability may result in loss of motorcycle control and an accident.

Remember that the 80 mph (130 km/h) limit will be reduced by the fitting of non-approved accessories, incorrect loading, worn tyres, overall motorcycle condition and poor road or weather conditions.



### Warning

Only operate this Triumph motorcycle at high speed in closed-course, on-road competition or on closed-course racetracks. High-speed operation should only be attempted by riders who have been instructed in the techniques necessary for high-speed riding and are familiar with the motorcycle's characteristics in all conditions.

High-speed operation in any other circumstances is dangerous and may result in loss of motorcycle control and an accident.



### Warning

The motorcycle must not be operated above the legal road speed limit except in closed-course conditions.