



Accessory Fitting Instructions

Forward Controls Kit	
Kit Number	Models Affected
A9770115	Bonneville Bobber, Bonneville Bobber Black

Note:

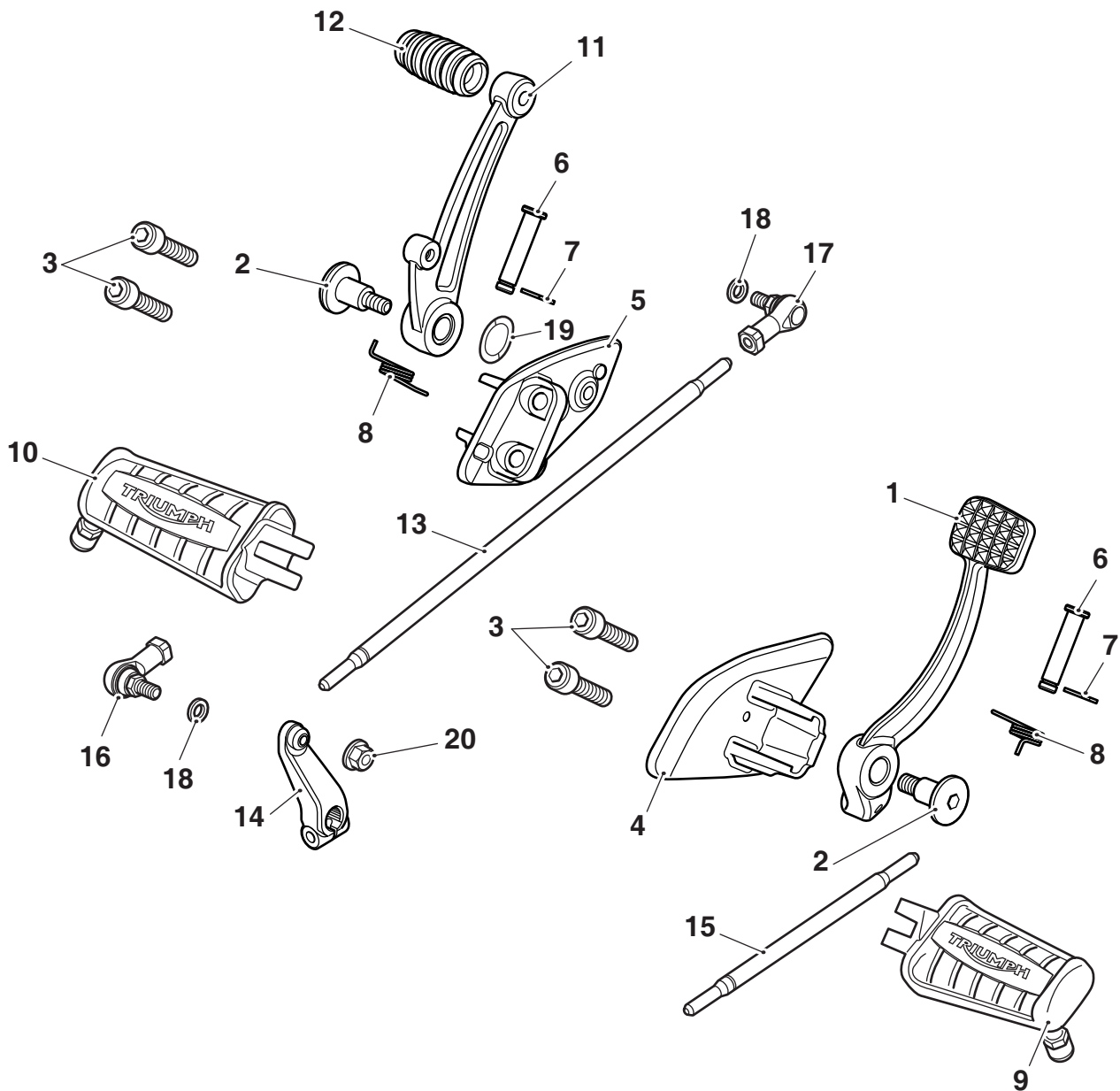
- **The Accessory Forward Controls Kit can only be fitted to Bonneville Bobber models if an Accessory Forward Controls Mount Kit has been fitted to the motorcycle.**

Thank you for choosing this Triumph genuine accessory kit. This accessory kit is the product of Triumph's use of proven engineering, exhaustive testing, and continuous striving for superior reliability, safety and performance.

Completely read all of these instructions before commencing the installation of the accessory kit in order to become thoroughly familiar with the kit's features and the installation process.

These instructions should be considered a permanent part of your accessory kit, and should remain with it even if your accessory equipped motorcycle is subsequently sold.

Parts Supplied



1.	Brake pedal	1 off	11.	Gear pedal	1 off
2.	Pivot bolt, M8	2 off	12.	Rubber, gear pedal	1 off
3.	Fixing, M8 x 30 mm	4 off	13.	Rod, gear change	1 off
4.	Control plate, right hand	1 off	14.	Gear change clamp	1 off
5.	Control plate, left hand	1 off	15.	Rod, brake linkage	1 off
6.	Pivot pin	2 off	16.	Ball joint, left hand thread	1 off
7.	Circlip	2 off	17.	Ball joint, right hand thread	1 off
8.	Return spring, footrest	2 off	18.	Washer	2 off
9.	Footrest, right hand	1 off	19.	Wavy washer (where supplied)	1 off
10.	Footrest, left hand	1 off	20.	Nut, M6 (where supplied)	1 off

Warning

Fit only genuine Triumph accessories to those models approved by Triumph as listed in the associated Triumph fitting instructions. The accessory kits covered in this instruction are designed for use on specific models of Triumph motorcycle. The accessory kits and the models applicable are listed at the start of the instruction. They should never be fitted to any other Triumph model or to any other manufacturer's motorcycle. Fitting an accessory kit to a Triumph model not listed, or to any other manufacturer's motorcycle will affect the performance, stability and handling of the motorcycle. This may affect the rider's ability to control the motorcycle and could result in an accident causing severe injuries or death.

Warning

Always have Triumph approved parts, accessories and conversions fitted by a trained technician of an authorised Triumph dealer. The fitment of parts, accessories and conversions by a technician who is not of an authorised Triumph dealer may affect the handling, stability or other aspects of the motorcycle's operation which may result in loss of motorcycle control and an accident.

Warning

Make sure the motorcycle is supported. A correctly supported motorcycle will help prevent it from falling. An unstable motorcycle may fall, causing injury to the operator or damage to the motorcycle.

Warning

A torque wrench of known accurate calibration must be used when fitting this accessory kit. Failure to tighten any of the fasteners to the correct torque specification may affect motorcycle performance, handling and stability. This may result in loss of motorcycle control and an accident.

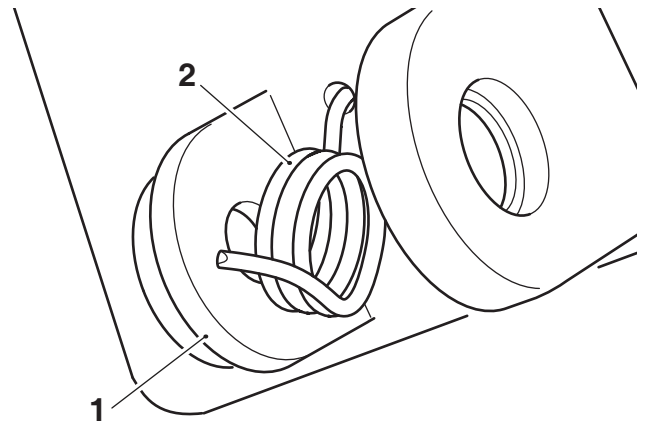
Warning

If the engine has recently been running, the exhaust system will be hot. Before working on or near the exhaust system, allow sufficient time for the system to cool, as touching any part of a hot exhaust could cause burn injuries.

Note:

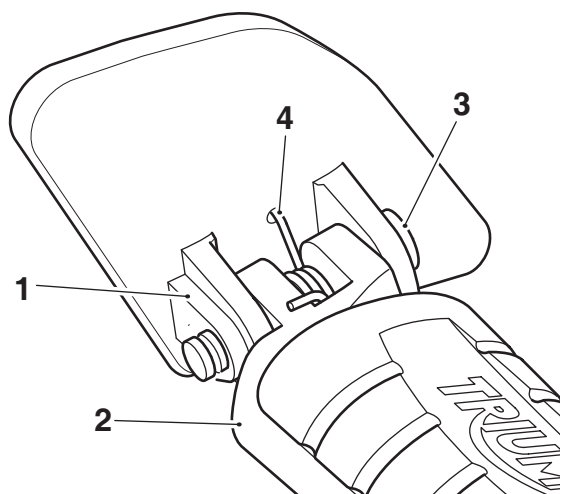
- Triumph offers a broad range of approved genuine accessories for your motorcycle. We cannot therefore cover all possible equipment variations in these instructions. For removal and installation of Triumph Genuine Accessories, always refer to the instructions supplied with the respective accessory kit. To obtain additional copies of any Triumph accessory instructions, visit www.triumphinstructions.com or contact your authorised Triumph dealer.

- Remove the gear pedal pin and rubber from the gear pedal. Remove the rubber from the gear pedal pin and discard. Retain the gear pedal pin for reuse.
- Fit the footrest return spring in to the footrest mount section of the right hand control plate in the orientation shown.



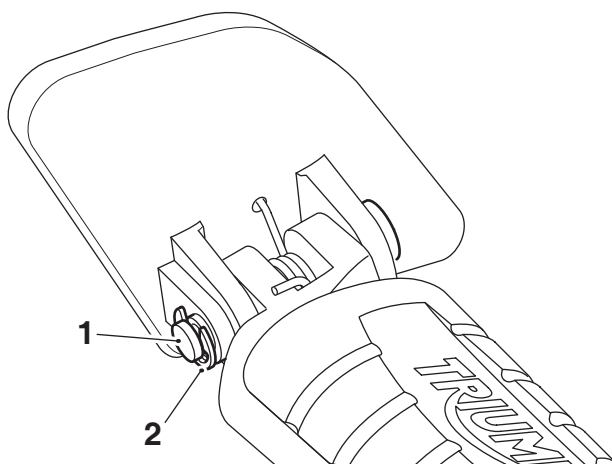
- Footrest mount, right hand control plate
- Footrest return spring

- Position the right hand footrest in to the footrest mount on the control plate, with the footrest return spring positioned as shown. Fit the pivot pin.



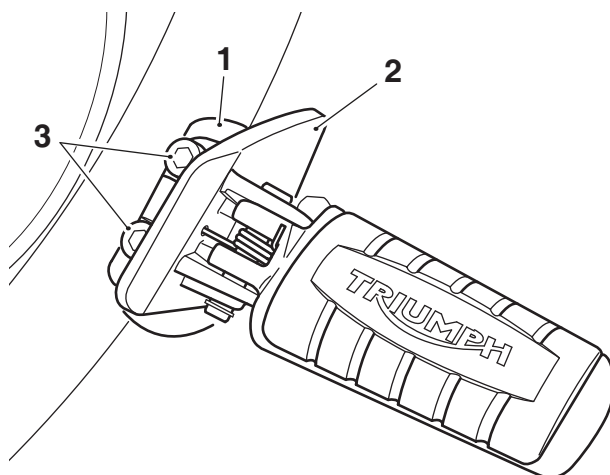
- Footrest mount, control plate
- Footrest
- Pivot pin
- Footrest return spring

- Fit the circlip to retain the pivot pin.



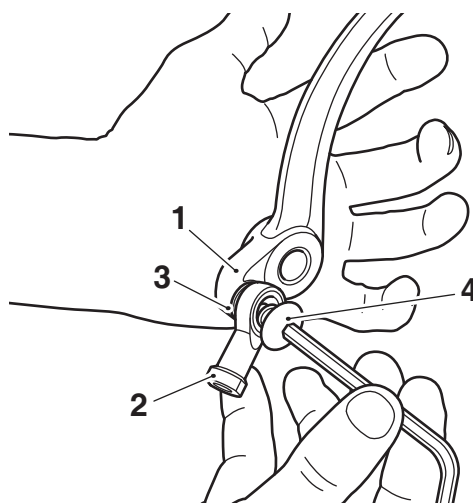
- Pivot pin
- Circlip

- Fit the control plate onto the forward control mount, as shown. Fit two M8 x 30 mm fixings from the kit. Tighten the fixings to **22 Nm**.



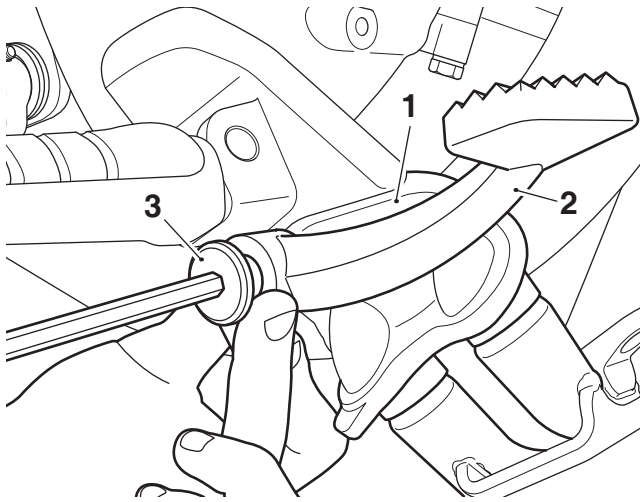
- Forward control mount
- Control plate
- Fixings, M8 x 30 mm

- Repeat steps 2 to 5 for the left hand side.
- Fit the rod end provided in the forward control mount kit to the brake pedal from the kit. Fit the M8 x 20 mm fixing and washer from the forward control mount kit. Tighten the fixing to **22 Nm**.



- Brake pedal
- Rod end
- Washer
- Fixing, M8 x 20 mm

8. Fit the brake pedal assembly to the right hand forward control mount as shown. Fit an M8 pivot bolt from the kit. Tighten the pivot bolt to **22 Nm**.



1. Forward control mount
2. Brake pedal assembly
3. Pivot bolt, M8

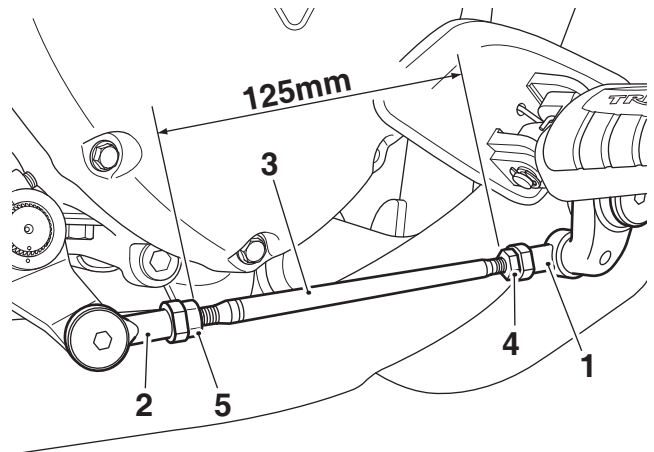
Note:

- The brake linkage rod has a right hand thread at one end and a left hand thread at the other end. The left hand thread should be connected to the brake clamp assembly.
9. Fit the lock nuts provided in the forward control mount kit to the brake linkage rod from the kit.

Note:

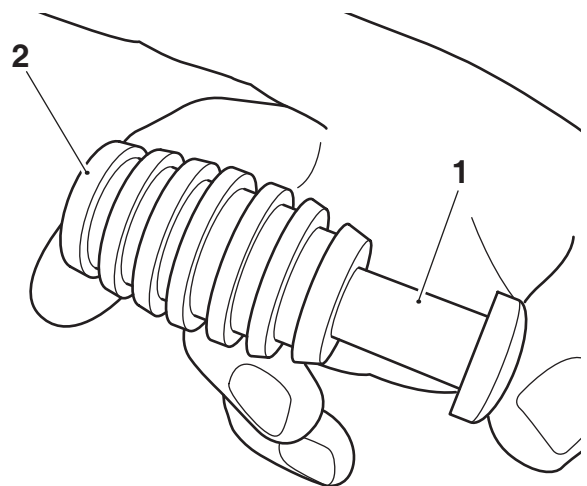
- The illustration below shows a recommended value of 125 mm. The distance between the brake linkage rod lock nuts, when locked, must not exceed 132 mm.

10. Fit the brake linkage rod to the brake pedal rod end and brake clamp rod end. Turn the rod to adjust the angle of the brake pedal to the preferred position, the dimension shown is a nominal value. Tighten the brake linkage rod lock nuts to **6 Nm**.



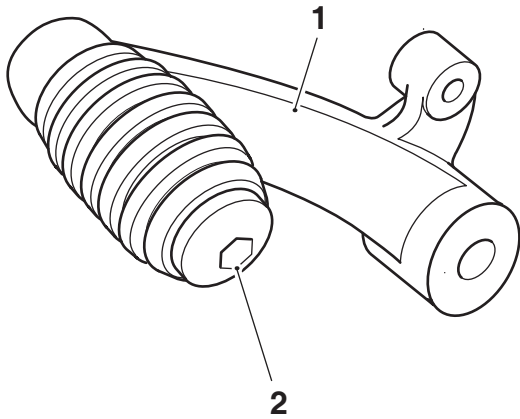
1. Rod end, brake pedal
2. Rod end, brake clamp
3. Brake linkage rod
4. Lock nut, right hand thread
5. Lock nut, left hand thread

11. Fit the gear pedal rubber from the kit onto the original gear pedal pin.



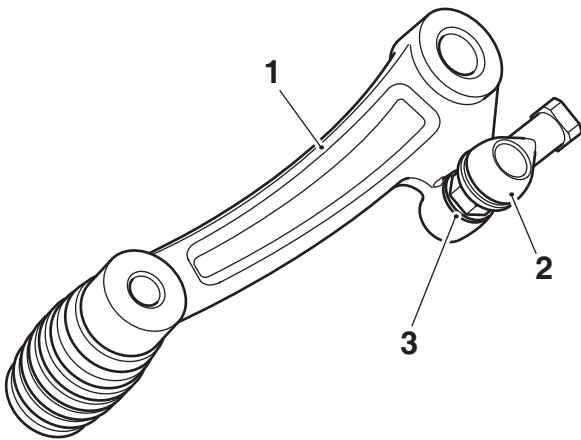
1. Gear pedal pin
2. Gear pedal rubber

12. Apply ThreeBond 1360 thread locking compound to the threads of the gear pedal pin and fit the gear pedal pin to the gear pedal from the kit. Tighten to **12 Nm**.



1. Gear pedal
2. Gear pedal pin

13. Fit the ball joint with the right hand thread from the kit onto the gear pedal with a washer from the kit positioned between the ball joint and gear pedal as shown. Tighten the ball joint to **8 Nm**.

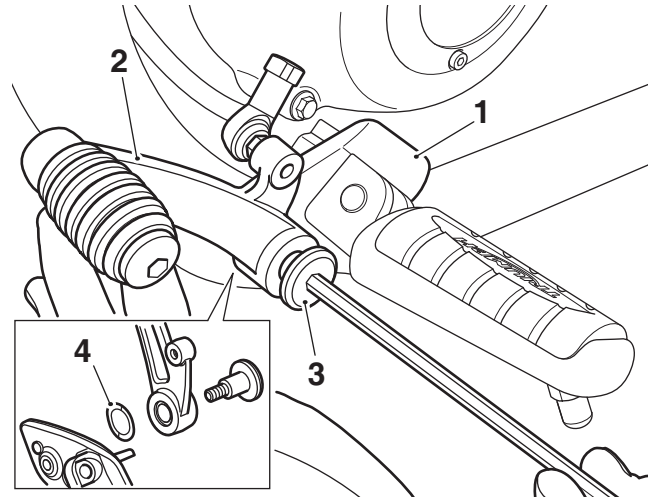


1. Gear pedal
2. Ball joint, right hand thread
3. Washer

Note:

- The forward controls kit may, or may not, contain a wavy washer. If a wavy washer is provided in the kit it must be positioned between the gear pedal assembly and left hand control plate, as shown below.

14. Fit the gear pedal assembly onto the left hand control plate with the wavy washer from the kit if provided, as shown. Fit an M8 pivot bolt from the kit. Tighten the pivot bolt to **22 Nm**.



1. Control plate
2. Gear pedal assembly
3. Pivot bolt, M8
4. Wavy washer (where supplied)

15. Collect the gear change clamp, ball joint, washer and where supplied the M6 nut from the kit.

Note:

- The Accessory Kit may contain a forged gear change clamp, or a fabricated gear change clamp, as described in step 16.

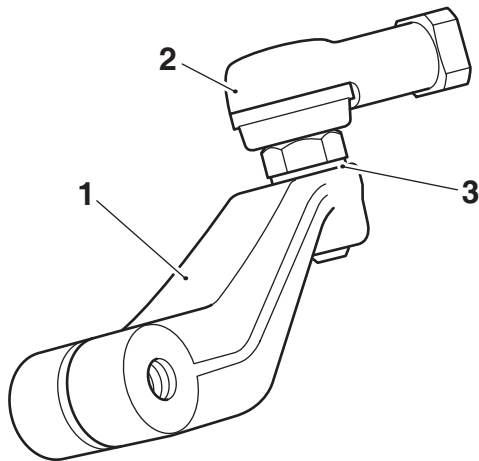
16. **Forged Gear Clamp**

Fit the ball joint onto the gear change clamp with the washer positioned between the ball joint and gear change clamp as shown. Tighten the ball joint to **8 Nm**.

Fabricated Gear Clamp

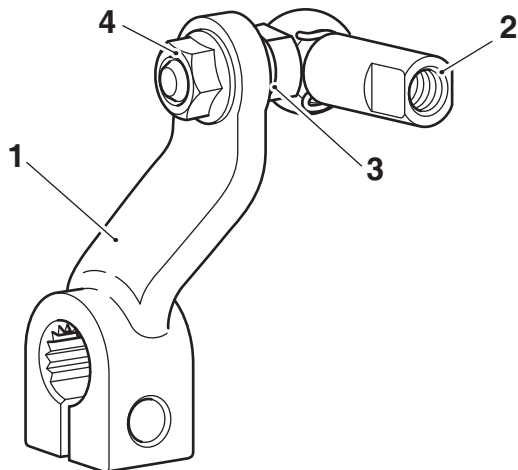
Fit the ball joint onto the gear change clamp with the washer positioned between the ball joint and gear change clamp as shown. Fit the M6 nut to the ball joint and while holding the nut, tighten the ball joint to **8 Nm**.

Forged Gear Clamp



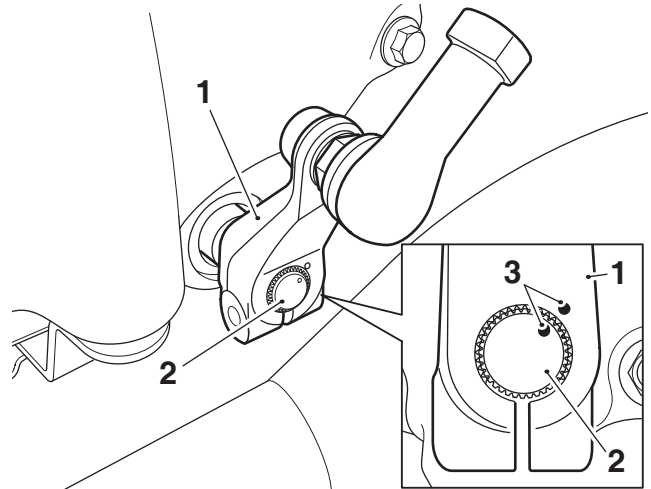
- 1. Gear change clamp
- 2. Ball joint
- 3. Washer

Fabricated Gear Clamp



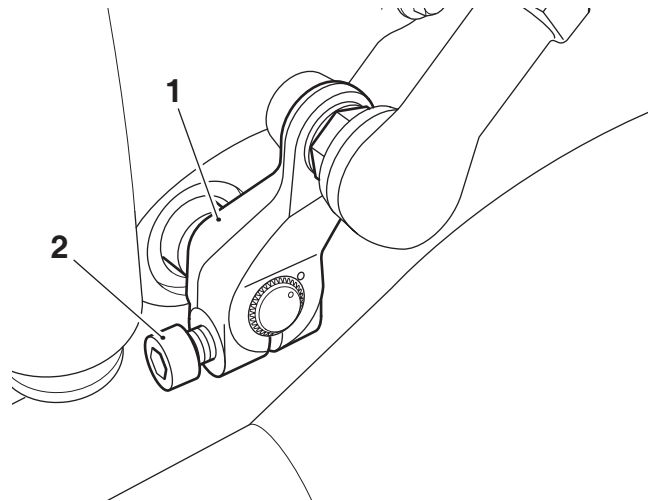
- 1. Gear change clamp
- 2. Ball joint
- 3. Washer
- 4. Nut, M6

17. Fit the gear change clamp assembly onto the gear selector shaft in the orientation shown. Make sure the alignment marks on the gear selector shaft and gear change clamp assembly are aligned.



- 1. Gear change clamp assembly
- 2. Gear selector shaft
- 3. Alignment marks

18. Re-fit the original fixing, as shown. Tighten the fixing to **9 Nm**.



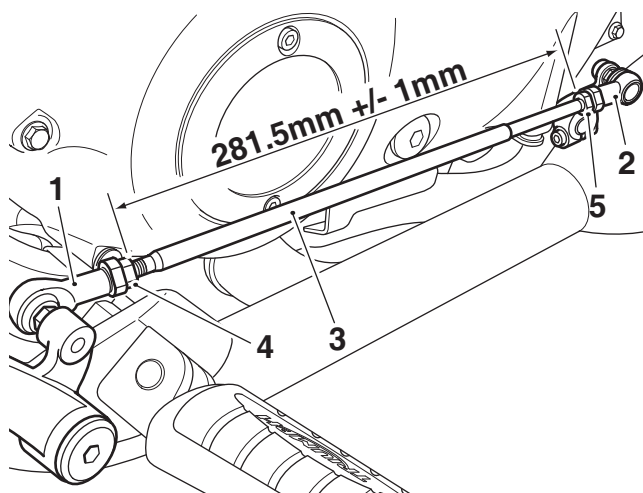
- 1. Gear change clamp assembly
- 2. Fixing

Note:

- The gear change rod has a right hand thread at one end and a left hand thread at the other end.
 - One of the gear change rod lock nuts provided in the forward control mount kit has a right hand thread, the other has a left hand thread.
19. Fit the lock nuts provided in the forward control mount kit to the gear change rod from the kit.

Note:

- The distance between the gear rod lock nuts, when locked, must be within 281.5 mm +/- 1 mm.
20. Fit the gear change rod to the gear pedal ball joint and gear change clamp ball joint. Turn the gear change rod to adjust the angle of the gear pedal to the preferred position. Tighten the gear change rod lock nuts to **6 Nm**.



1. Ball joint, gear pedal
2. Ball joint, gear change clamp
3. Gear change rod
4. Lock nut, right hand thread
5. Lock nut, left hand thread

Warning

If, after fitting this accessory kit, you have any doubt about the performance of any aspect of the motorcycle, contact an authorised Triumph dealer and do not ride the motorcycle until the authorised dealer has declared it fit for use. Riding a motorcycle when there is any doubt as to any aspect of the performance of the motorcycle may result in loss of motorcycle control and an accident.

Warning

Never ride an accessory-equipped motorcycle at speeds above 80 mph (130 km/h).

The presence of accessories will cause changes in the stability and handling of the motorcycle. Failure to allow for changes in motorcycle stability may result in loss of motorcycle control and an accident.

Remember that the 80 mph (130 km/h) limit will be reduced by the fitting of non-approved accessories, incorrect loading, worn tyres, overall motorcycle condition and poor road or weather conditions.

Warning

The motorcycle must not be operated above the legal road speed limit except in closed-course conditions.

Warning

Only operate this Triumph motorcycle at high speed in closed-course, on-road competition or on closed-course racetracks. High-speed operation should only be attempted by riders who have been instructed in the techniques necessary for high-speed riding and are familiar with the motorcycle's characteristics in all conditions.

High-speed operation in any other circumstances is dangerous and may result in loss of motorcycle control and an accident.