



Accessory Fitting Instructions

Grab Rail and Rack Kit, Black	
Kit Number	Models Affected
A9758179 A9758341 A9758361	Street Twin, Speed Twin 900, Street Scrambler, Scrambler 900
Grab Rail and Rack Kit, Graphite	
Kit Number	Models Affected
A9758304	Street Twin, Speed Twin 900, Street Scrambler, Scrambler 900
Grab Rail Kit, Black	
Kit Number	Models Affected
A9758292 A9758342	Street Twin, Speed Twin 900, Street Scrambler, Scrambler 900
A9758311 A9758330	Thruxton 1200, Thruxton 1200 R, Thruxton RS
Grab Rail Kit, Graphite	
Kit Number	Models Affected
A9758305	Street Twin, Speed Twin 900, Street Scrambler, Scrambler 900
A9758312	Thruxton 1200, Thruxton 1200 R, Thruxton RS
Grab Rail Kit, Chrome	
Kit Number	Models Affected
A9758315	Thruxton 1200, Thruxton 1200 R, Thruxton RS

Note:

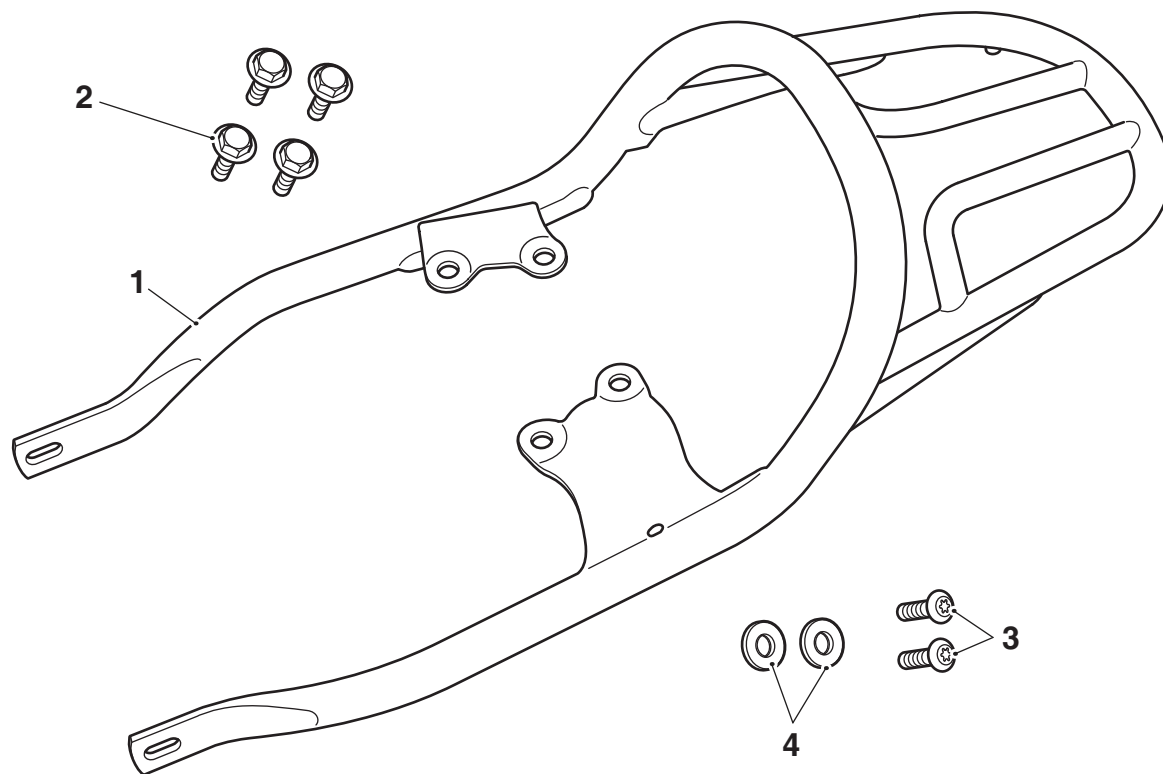
- **The grab rail and rack and grab rail kits listed above cannot be used if the motorcycle has previously been fitted with any accessory Fender Removal Kit.**

Thank you for choosing this Triumph genuine accessory kit. This accessory kit is the product of Triumph's use of proven engineering, exhaustive testing, and continuous striving for superior reliability, safety and performance.

Completely read all of these instructions before commencing the installation of the accessory kit in order to become thoroughly familiar with the kit's features and the installation process.

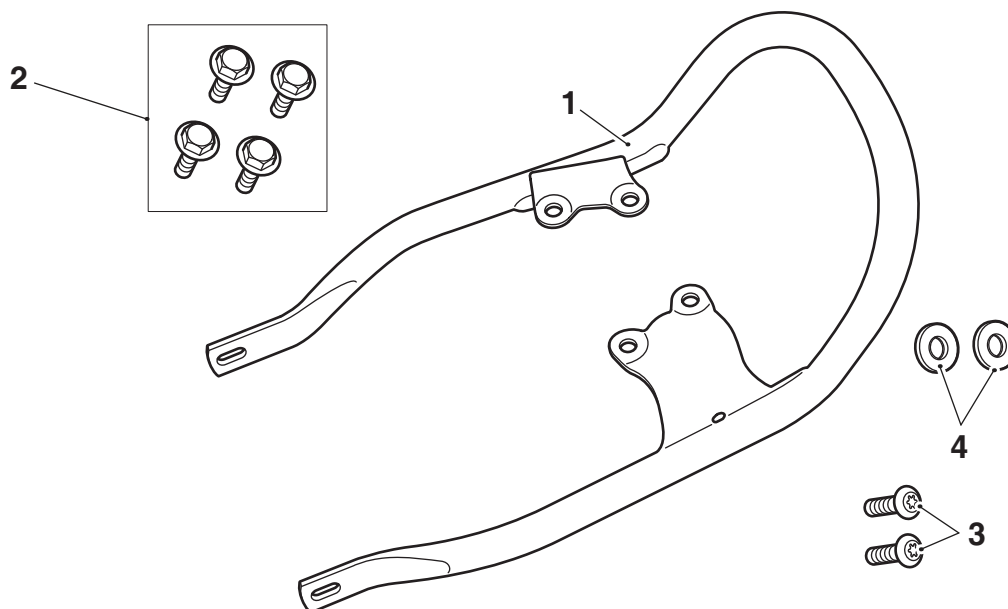
These instructions should be considered a permanent part of your accessory kit, and should remain with it even if your accessory equipped motorcycle is subsequently sold.

Parts supplied: A9758179, A9758304, A9758341, A9758361



1. Grab rail and rack	1 off	3. Screw, M8 x 20 mm	2 off
2. Screw, M8 x 16 mm	4 off	4. Washer, M8	2 off

Parts supplied: A9758292, A9758305, A9758311, A9758312, A9758315, A9758342, A9758330



1. Grab rail	1 off	3. Screw, M8 x 20 mm	2 off
2. Screw, M8 x 16 mm	4 off	4. Washer, M8	2 off



Warning

Fit only genuine Triumph accessories to those models approved by Triumph as listed in the associated Triumph fitting instructions. The accessory kits covered in this instruction are designed for use on specific models of Triumph motorcycle. The accessory kits and the models applicable are listed at the start of the instruction. They should never be fitted to any other Triumph model or to any other manufacturer's motorcycle. Fitting an accessory kit to a Triumph model not listed, or to any other manufacturer's motorcycle will affect the performance, stability and handling of the motorcycle. This may affect the rider's ability to control the motorcycle and could result in an accident causing severe injuries or death.



Warning

Always have Triumph approved parts, accessories and conversions fitted by a trained technician of an authorised Triumph dealer. The fitment of parts, accessories and conversions by a technician who is not of an authorised Triumph dealer may affect the handling, stability or other aspects of the motorcycle's operation which may result in loss of motorcycle control and an accident.



Warning

Throughout this operation, ensure that the motorcycle is stabilised and adequately supported to prevent risk of injury from the motorcycle falling.



Warning

A torque wrench of known accurate calibration must be used when fitting this accessory kit. Failure to tighten any of the fasteners to the correct torque specification may affect motorcycle performance, handling and stability. This may result in loss of motorcycle control and an accident.

Note:

- Triumph offers a broad range of approved genuine accessories for your motorcycle. We cannot therefore cover all possible equipment variations in these instructions. For removal and installation of Triumph Genuine Accessories, always refer to the instructions supplied with the respective accessory kit. To obtain additional copies of any Triumph accessory instructions, visit www.triumphinstructions.com or contact your authorised Triumph dealer.

Note:

- For Street Scrambler and Scrambler 900 models an accessory Twin Seat Kit must be fitted before a grab rail and rack, or grab rail can be fitted. The accessory grab rail and rack or grab rail must not be used with the original seat and rack fitted to the motorcycle.
- The instruction shows the installation of a grab rail and rack, however, the procedure is the same for the grab rail only option.

1. Remove the seat, as described in the Service Manual.
2. Disconnect the battery, as described in the Service Manual.

Thruxton Models only

3. Remove the rear mudguard, as described in the Service Manual. Retain the mudguard and fixings for reuse.



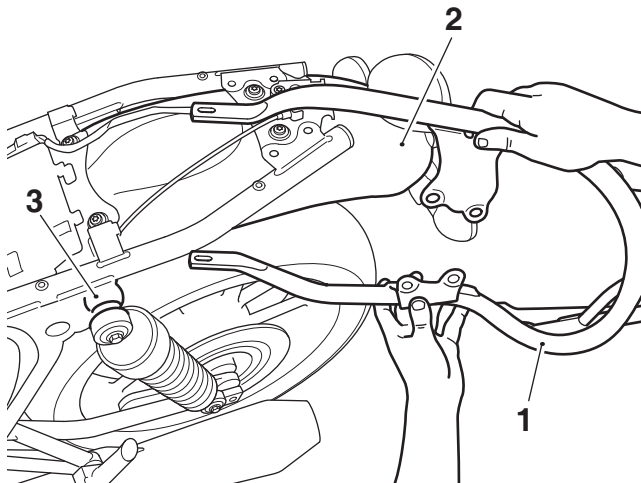
Caution

Care should be taken to ensure the grab rail and rack does not contact any part of the motorcycle frame or rear mudguard when it is positioned over the mudguard and inside the frame. If the grab rail and rack is allowed to contact the motorcycle frame or rear mudguard it could result in damage to the paintwork.

All Models

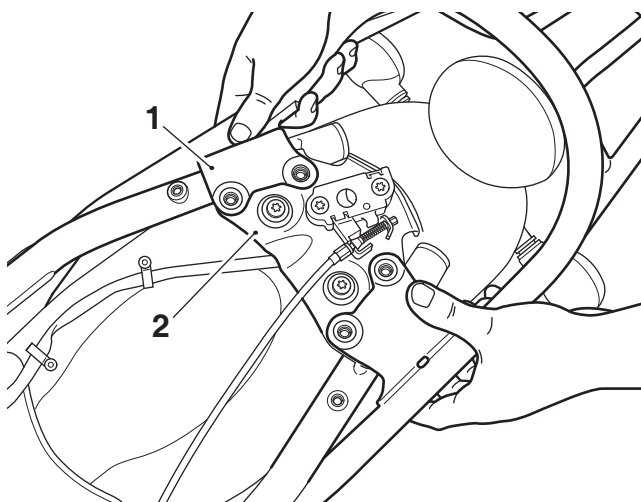
Note:

- Steps 4 to 7 refer to and show fitment to Street Twin, Speed Twin 900, Street Scrambler and Scrambler 900 models. The procedure is the same for Thruxton models, but with the rear mudguard removed.
4. Collect the grab rail and rack from the kit and carefully feed the front of the rack over the rear mudguard and inside the motorcycle frame past the rear suspension unit top mountings.



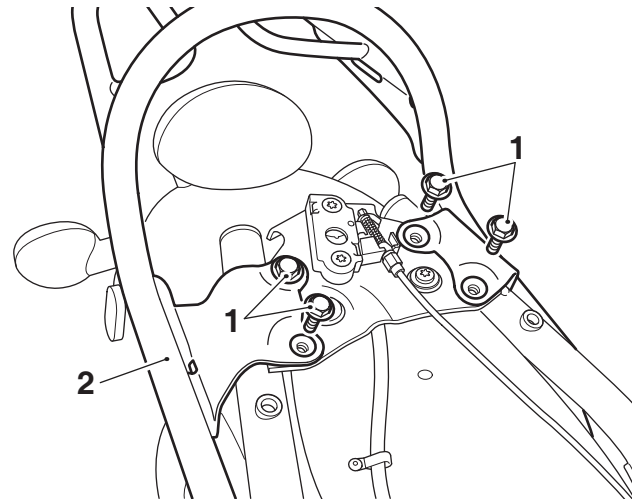
1. Grab rail and rack
2. Mudguard, rear
3. Rear suspension unit mounting

5. Align the rear grab rail and rack fixing points with the mountings provided in the motorcycle frame.



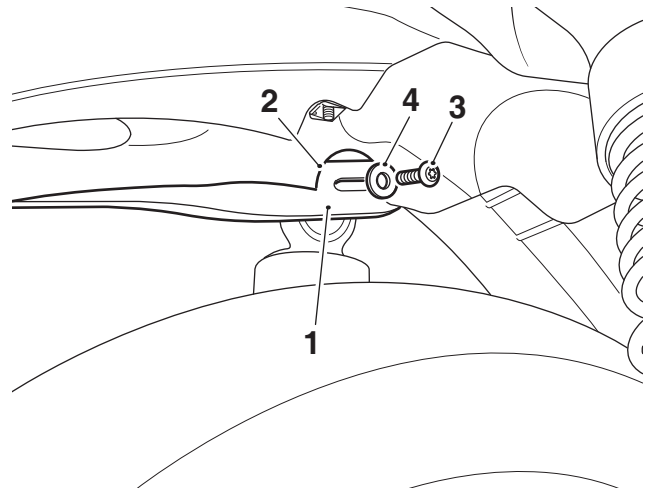
1. Grab rail and rack
2. Motorcycle frame

6. Loosely fit the four M8 x 16 mm screws from the kit to the rear grab rail and rack fixing points, as shown.



1. Screw, M8 x 16 mm
2. Grab rail and rack

7. Collect an M8 x 20 mm screw and M8 washer from the kit. Align the front left hand side of the grab rail and rack with the fixing point in the motorcycle frame. A cut out in the rear mudguard provides access to the fixing point. Fit the M8 x 20 mm screw and M8 washer to hold the grab rail and rack in position. Do not fully tighten the screw at this point.



1. Grab rail and rack
2. Cut out, rear mudguard
3. Screw, M8 x 20 mm
4. Washer, M8

8. Repeat step 7 for the right hand side.
9. Starting with the four rear fixings, tighten all fixings to **20 Nm**.

Thruxton Models only

10. Refit the rear mudguard, using the original fixings, as described in the Service Manual.

All Models

11. Reconnect the battery, as described in the Service Manual.
12. Refit the seat, as described in the Service Manual.

Warning

Always ensure that any load carried on the luggage rack is correctly secured such that it will not move around while the motorcycle is in motion.

An adhesive label on the luggage rack details the maximum safe load for the luggage rack, which is 3 kg (6.6 lbs).

Incorrect loading may result in an unsafe riding condition, which may result in loss of motorcycle control and an accident.

Warning

To maintain the handling characteristics of the motorcycle when riding with luggage or with a passenger and luggage, refer to the Owner's Handbook for the correct suspension settings.

Incorrect suspension settings could significantly change the handling characteristics of the motorcycle and may result in loss of motorcycle control and an accident.

Warning

After fitting the accessory kit the motorcycle will exhibit new handling characteristics. Operate the motorcycle in a safe area free from traffic to gain familiarity with any new characteristics. Operation of the motorcycle when not familiar with any new handling characteristics may result in loss of motorcycle control and an accident.

Warning

If, after fitting this accessory kit, you have any doubt about the performance of any aspect of the motorcycle, contact an authorised Triumph dealer and do not ride the motorcycle until the authorised dealer has declared it fit for use. Riding a motorcycle when there is any doubt as to any aspect of the performance of the motorcycle may result in loss of motorcycle control and an accident.

Warning

Never ride an accessory-equipped motorcycle at speeds above 80 mph (130 km/h).

The presence of accessories will cause changes in the stability and handling of the motorcycle. Failure to allow for changes in motorcycle stability may result in loss of motorcycle control and an accident.

Remember that the 80 mph (130 km/h) limit will be reduced by the fitting of non-approved accessories, incorrect loading, worn tyres, overall motorcycle condition and poor road or weather conditions.

Warning

The motorcycle must not be operated above the legal road speed limit except in closed-course conditions.

Warning

Only operate this Triumph motorcycle at high speed in closed-course, on-road competition or on closed-course racetracks. High-speed operation should only be attempted by riders who have been instructed in the techniques necessary for high-speed riding and are familiar with the motorcycle's characteristics in all conditions.

High-speed operation in any other circumstances is dangerous and may result in loss of motorcycle control and an accident.