



Accessory Fitting Instructions

Thank you for choosing this Triumph genuine accessory kit. This accessory kit is the product of Triumph's use of proven engineering, exhaustive testing, and continuous striving for superior reliability, safety and performance.

Completely read all of these instructions before commencing the installation of the accessory kit in order to become thoroughly familiar with the kit's features and the installation process.

These instructions should be considered a permanent part of your accessory kit, and should remain with it even if your accessory equipped motorcycle is subsequently sold.

Top Box Mounting Kit	
Kit Number	Models
Black	
A9758306, A9758366	Street Twin, Speed Twin 900, Street Scrambler, Scrambler 900
A9758308, A9758368	Bonneville T100 and Bonneville T100 Black from VIN 759204, Bonneville T120, Bonneville T120 Black
Graphite	
A9758307	Street Twin, Speed Twin 900, Street Scrambler, Scrambler 900
Chrome	
A9758309, A9758369	Bonneville T100 and Bonneville T100 Black from VIN 759204, Bonneville T120, Bonneville T120 Black

⚠ WARNING

This accessory kit requires the fitment of additional accessory kit(s) to function. This accessory kit must only be fitted in combination with additional accessory kits that are approved for use with your motorcycle.

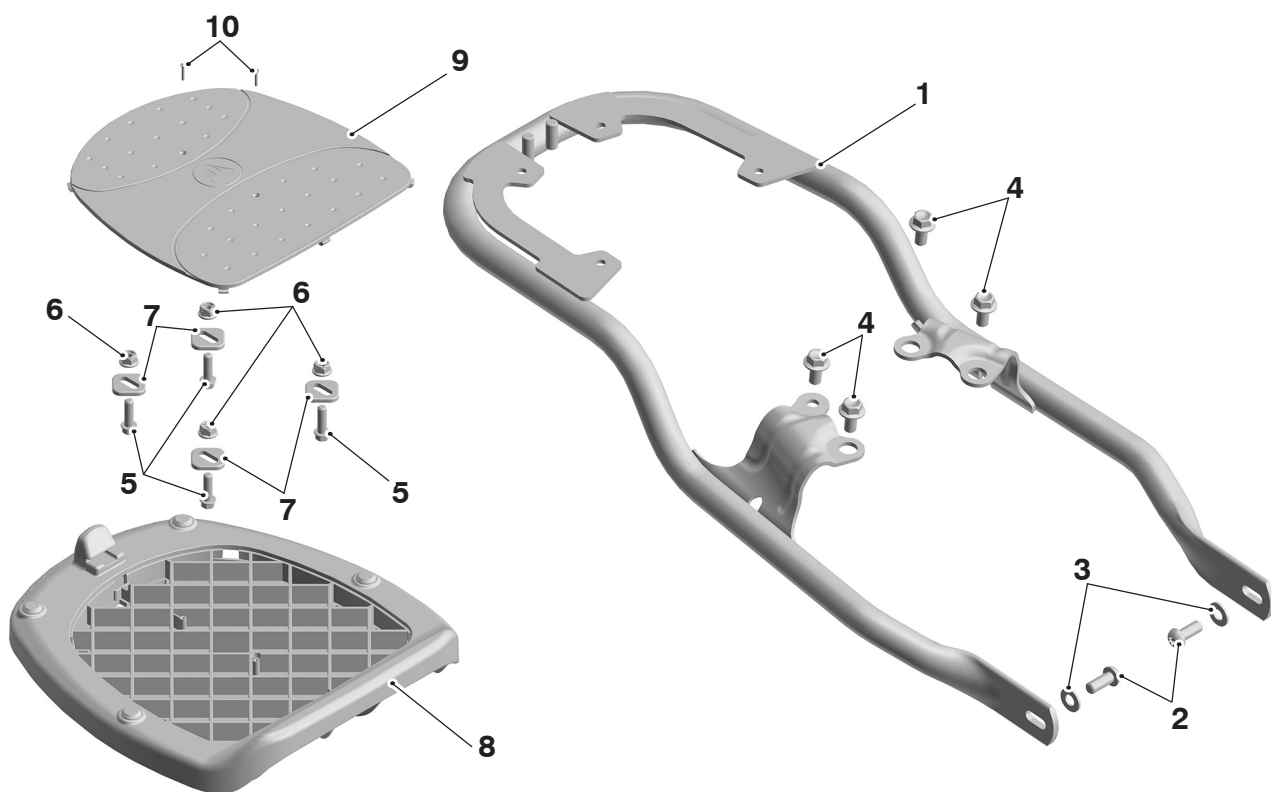
For a list of approved accessory kits for your motorcycle refer to the Electronic Parts Catalogue or contact your Triumph dealer.

The fitting of any accessory kits not approved for your motorcycle may affect the handling, stability or other aspect of the motorcycle operation.

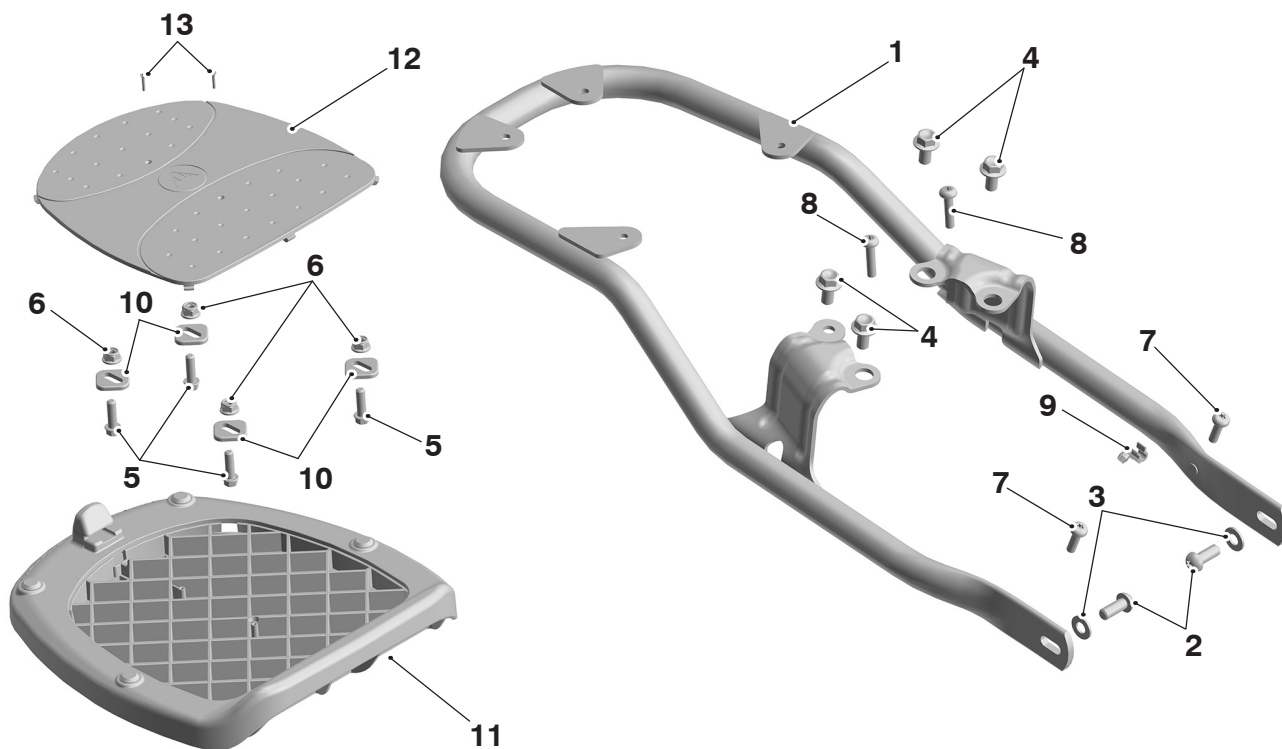
Failure to follow the advice above may lead to loss of motorcycle control which could result in serious injury or death.

Parts supplied

A9758306, A9758307, A9758366



1. Mounting rack	1 off	6. Lock nut, M6	4 off
2. Screw, M8 x 20 mm	2 off	7. Square washer	4 off
3. Washer, M8	2 off	8. Mounting platform	1 off
4. Bolt, M8 x 16 mm	4 off	9. Cover plate	1 off
5. Bolt, M6 x 20 mm	4 off	10. Screw	2 off



1. Mounting rack	1 off	8. Screw, M6 x 25 mm	2 off
2. Screw, M8 x 20 mm	2 off	9. Retaining clip	1 off
3. Washer, M8	2 off	10. Square washer	4 off
4. Bolt, M8 x 16 mm	4 off	11. Mounting platform	1 off
5. Bolt, M6 x 20 mm	4 off	12. Cover plate	1 off
6. Lock nut, M6	4 off	13. Screw	2 off
7. Screw, M6 x 20 mm	2 off		

⚠ WARNING

Fit only genuine Triumph accessories to those models approved by Triumph as listed in the associated Triumph fitting instructions.

The accessory kits covered in this instruction are designed for use on specific models of Triumph motorcycle. The accessory kits and the models applicable are listed at the start of the instruction. They should never be fitted to any other Triumph model or to any other manufacturer's motorcycle.

Fitting an accessory kit to a Triumph model not listed, or to any other manufacturer's motorcycle, will affect the performance, stability and handling of the motorcycle.

Failure to follow the advice above may lead to loss of motorcycle control which could result in serious injury or death.

⚠ WARNING

Always have Triumph approved parts, accessories and conversions fitted by a competent person with the specialist knowledge and technical understanding of motorcycles, such as an authorised Triumph dealer.

The fitment of parts, accessories and conversions by a person without the specialist knowledge and technical understanding of motorcycles may affect the handling, stability or other aspects of the motorcycle's operation.

Failure to follow the advice above may lead to loss of motorcycle control which could result in serious injury or death.

⚠ WARNING

A torque wrench of known accurate calibration must be used when fitting this accessory kit.

Failure to tighten any of the fasteners to the correct torque specification may affect motorcycle performance, handling and stability.

Failure to follow the advice above may lead to loss of motorcycle control which could result in serious injury or death.

⚠ WARNING

Make sure the motorcycle is stabilised and adequately supported.

Do not support the motorcycle on any ancillary component, the exhaust system or any other non structural parts of the motorcycle frame.

A correctly supported motorcycle will help prevent it from falling.

An unstable motorcycle may fall resulting in motorcycle damage, serious injury or death.

NOTICE

Triumph offers a broad range of approved genuine accessories for your motorcycle.

We cannot therefore cover all possible equipment variations in these instructions. For removal and installation of Triumph Genuine Accessories, always refer to the instructions supplied with the respective accessory kit.

To obtain additional copies of any Triumph accessory instructions, visit www.triumphinstructions.com or contact your authorised Triumph dealer.

Mounting Rack Installation

NOTICE

Care should be taken to ensure the mounting rack does not contact any part of the motorcycle frame or rear mudguard when it is positioned over the mudguard and inside the frame. If the mounting rack is allowed to contact the motorcycle frame or rear mudguard it could result in damage to the paintwork.

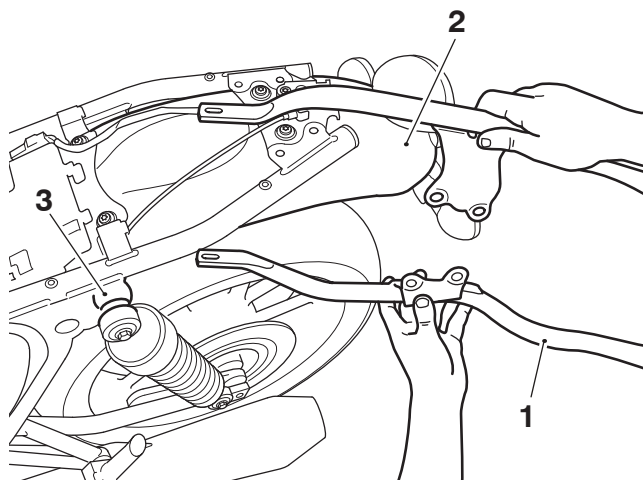
Street Twin, Speed Twin 900, Street Scrambler and Scrambler 900 Models

NOTICE

For Street Scrambler and Scrambler 900 models the accessory Twin Seat Kit must be fitted before a top box mounting kit can be fitted.

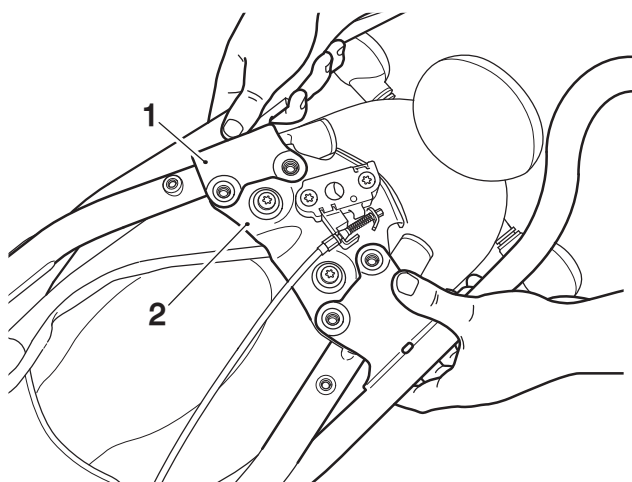
1. Remove the seat as described in the Owners Handbook.
2. Disconnect the battery, negative (black) lead first, as described in the Service Manual.

3. Collect the mounting rack from the kit and carefully feed the front of the rack over the rear mudguard and inside the motorcycle frame past the rear suspension unit top mountings.



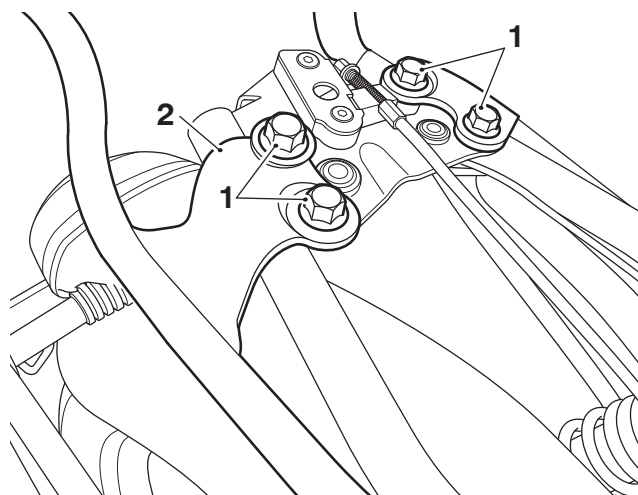
1. Mounting rack
2. Mudguard, rear
3. Rear suspension unit mounting

4. Align the rear mounting rack fixing points with the mountings provided in the motorcycle frame.



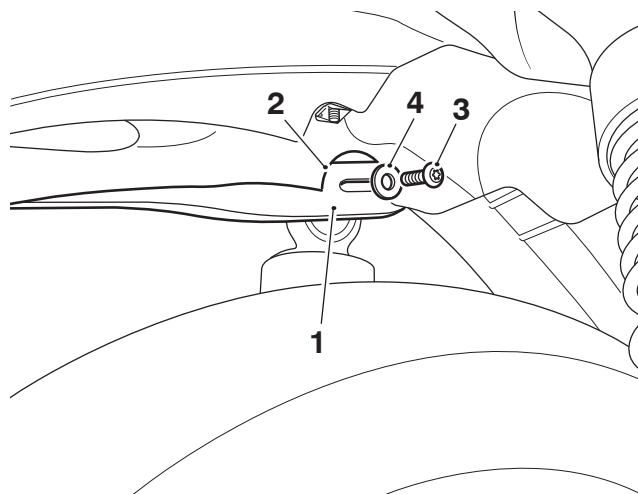
1. Mounting rack
2. Motorcycle frame

5. Loosely fit the four M8 x 16 mm bolts from the kit to the rear mounting rack fixing points, as shown.



1. Bolt, M8 x 16 mm
2. Mounting rack

6. Collect an M8 x 20 mm screw and M8 washer from the kit. Align the front left hand side of the mounting rack with the fixing point in the motorcycle frame. A cut-out in the rear mudguard provides access to the fixing point. Fit the M8 x 20 mm screw and M8 washer to hold the mounting rack in position. Do not fully tighten the screw at this point.

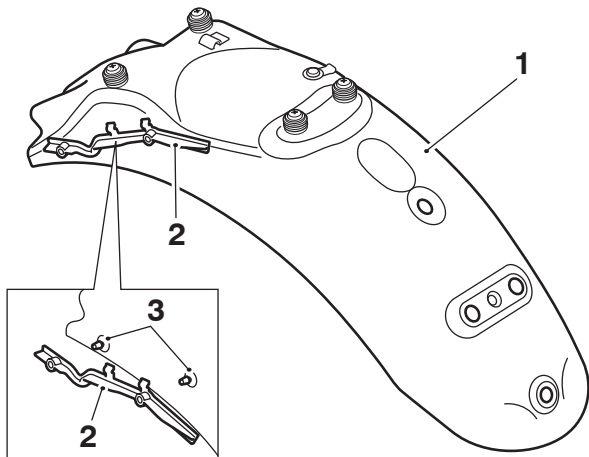


1. Mounting rack
2. Cut-out, rear mudguard
3. Screw, M8 x 20 mm
4. Washer, M8

7. Repeat step 6 for the right hand side.
8. Tighten the four rear fixings to **20 Nm**. Tighten the front fixings to **20 Nm**.
9. Reconnect the battery, positive (red) lead first and tighten the battery terminals to **4.5 Nm**.
10. Refit the seat, as described in the Owner's Handbook.

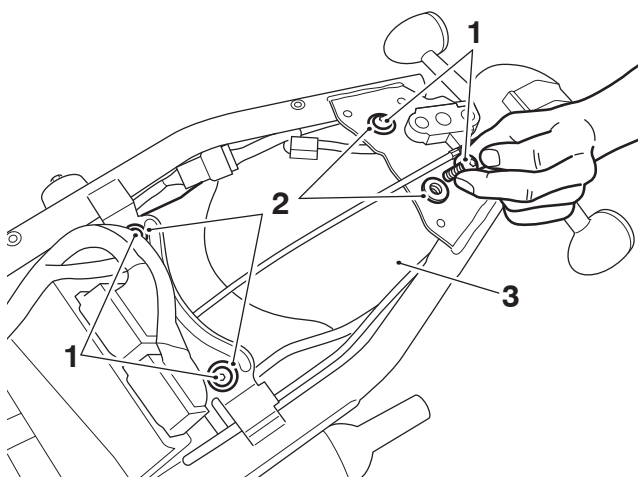
Bonneville T100 and Bonneville T120 Models

11. Remove the seat, as described in the Owner's Handbook.
12. Disconnect the battery, negative (black) lead first.
13. Some models may be fitted with an infill moulding on the rear mudguard which retains the seat latch cable to the mudguard. If an infill moulding is fitted detach the seat latch cable from the infill moulding. Remove the two stay clips from the underside of the mudguard and remove the infill moulding. Retain the infill moulding and stay clips if the motorcycle is to be returned to its original condition.



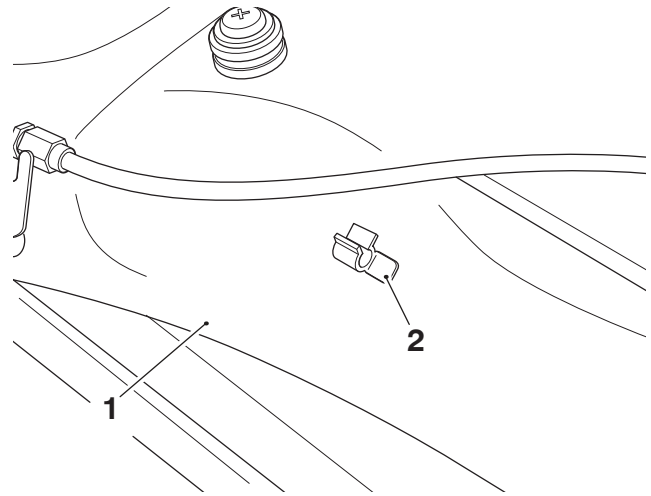
1. Rear mudguard
2. Infill moulding
3. Stay clip

14. Remove the four rear mudguard fixings leaving the flanged sleeves in place. Discard the fixings. Carefully lower the rear mudguard to rest on the rear tyre.



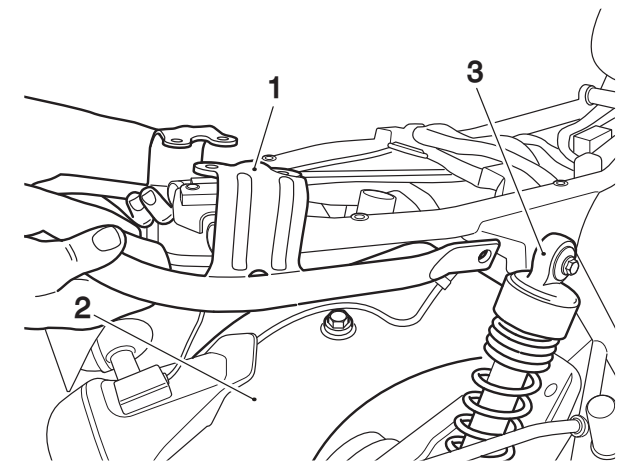
1. Fixing
2. Flanged sleeve
3. Rear mudguard

15. For models where an infill moulding has been removed from the rear mudguard, collect the retaining clip from the kit. Fit the retaining clip to the mudguard, in the orientation shown, using the original infill moulding front fixing hole in the mudguard.



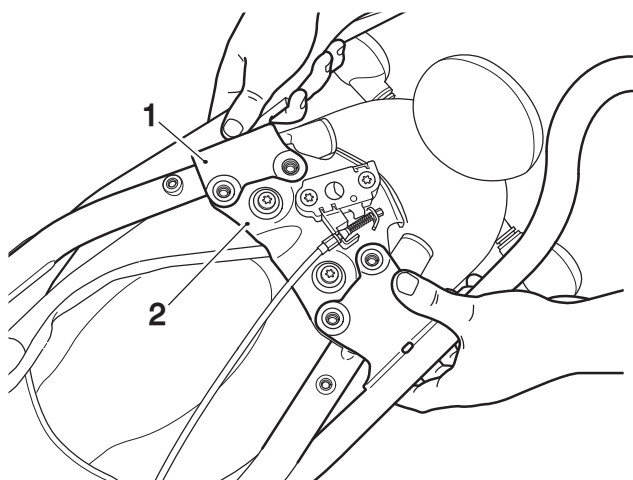
1. Rear mudguard
2. Retaining clip

16. Collect the mounting rack from the kit and carefully feed the front of the mounting rack over the rear mudguard and inside the motorcycle frame at the rear shock absorber top mountings.



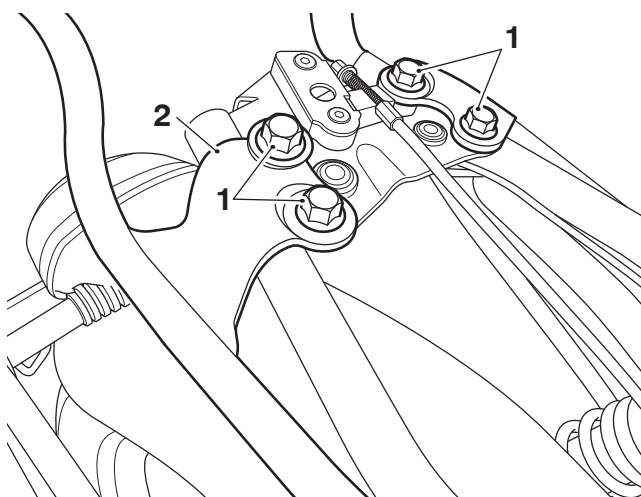
1. Mounting rack
2. Mudguard, rear
3. Rear shock absorber mounting

17. Align the rear mounting rack fixing points with the mountings provided in the motorcycle frame.



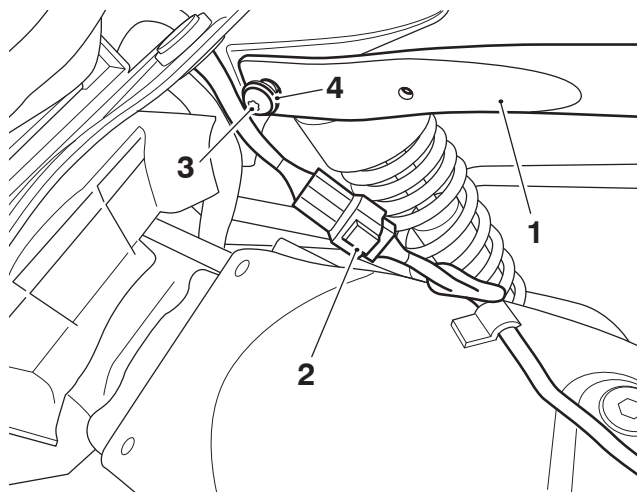
1. Mounting rack
2. Motorcycle frame

18. Loosely fit the four M8 x 16 mm bolts from the kit to the mounting rack fixing points, as shown.



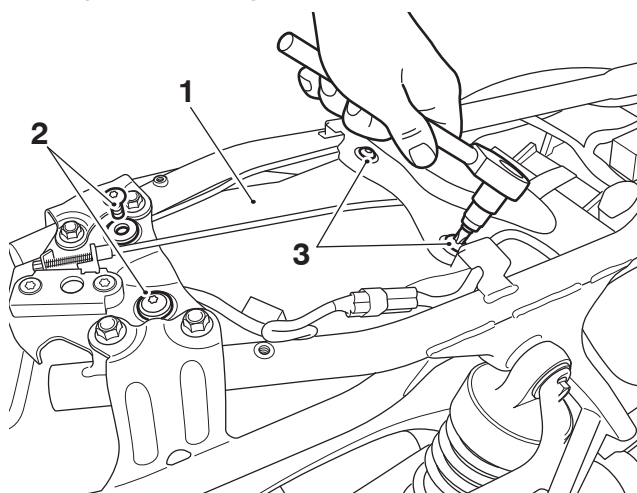
1. Bolt, M8 x 16 mm
2. Mounting rack

19. Collect an M8 x 20 mm screw and M8 washer from the kit. Align the front right hand side of the mounting rack with the fixing point in the motorcycle frame. Ensure the rear light harness is not trapped between the mounting rack and motorcycle frame. Fit the M8 x 20 mm screw and M8 washer to hold the mounting rack in position. Do not fully tighten the screw at this point.



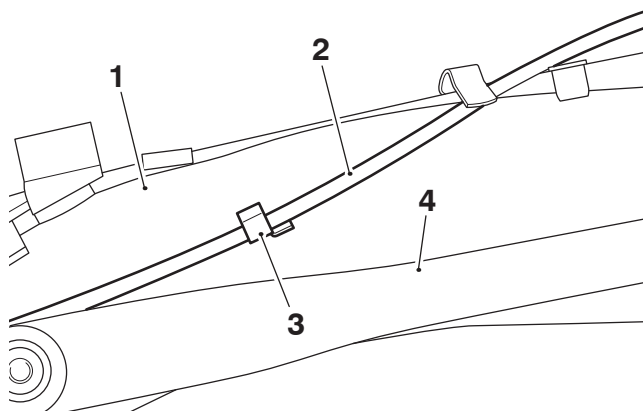
1. Mounting rack
2. Rear light harness
3. Screw, M8 x 20 mm
4. Washer, M8

20. Repeat step 19 for the left hand side.
21. Tighten the four rear fixings to **20 Nm**. Tighten the front fixings to **20 Nm**.
22. Refit the rear mudguard using the new screws provided in the kit. Fit the M6 x 25 mm screws to the two rear fixing positions and the M6 x 20 mm screws to the two front fixing positions. Tighten all fixings to **10 Nm**.



1. Rear mudguard
2. Screw, M6 x 25 mm
3. Screw, M6 x 20 mm

- For models where an infill moulding has been removed from the rear mudguard, attach the seat latch cable to the retaining clip fitted to the mudguard.



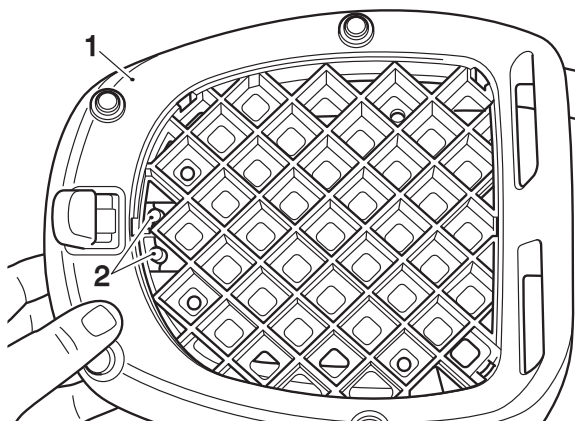
- Rear mudguard
- Seat latch cable
- Retaining clip
- Mounting rack

- Reconnect the battery, positive (red) lead first, as described in the Service Manual.
- Refit the seat, as described in the Owner's Handbook.

Mounting Platform Installation

Street Twin, Speed Twin 900, Street Scrambler and Scrambler 900 Models

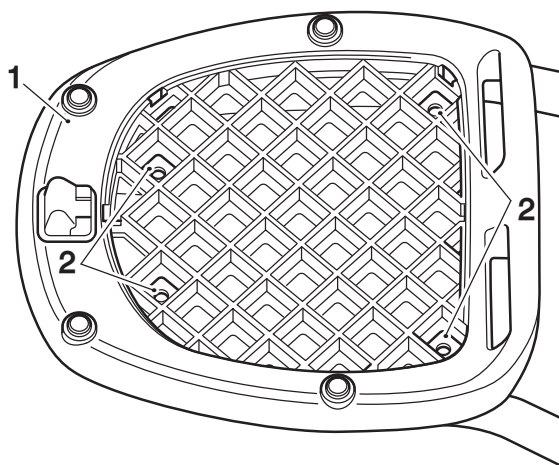
- Position the mounting platform on the mounting rack ensuring the two location pegs on the mounting rack locate in the mounting platform, as shown below.



- Mounting platform
- Location pegs, mounting rack

Bonneville T100 and Bonneville T120 Models

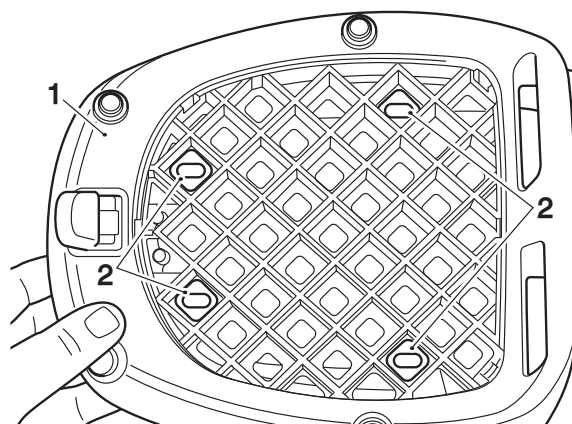
- Position the mounting platform on the mounting rack and align the four fixing positions on the mounting platform with the fixing positions on the mounting rack, as shown below.



- Mounting platform
- Fixing point, mounting rack

All Models

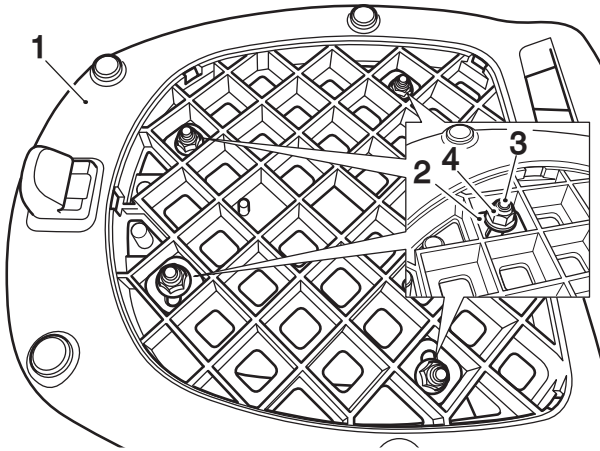
- Fit the four square washers from the top box mounting kit into the mounting platform fixing point recesses.



- Mounting platform (Street Twin shown)
- Square washer

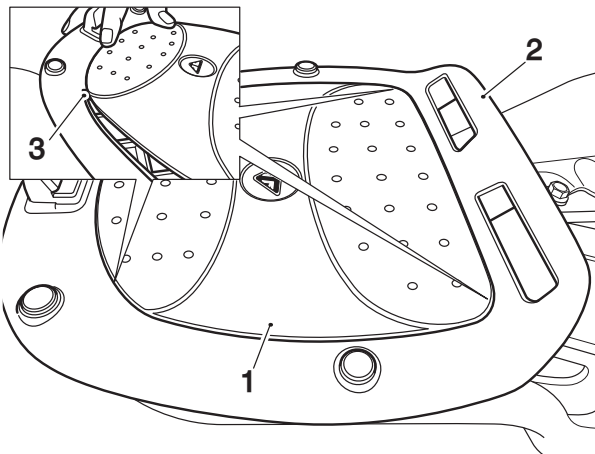
- Collect the four M6 x 20 mm bolts and M6 lock nuts from the kit.

- Fit the M6 x 20 mm bolts from the underside of the mounting rack, through the mounting platform fixing points and square washers. Secure with the M6 lock nuts.



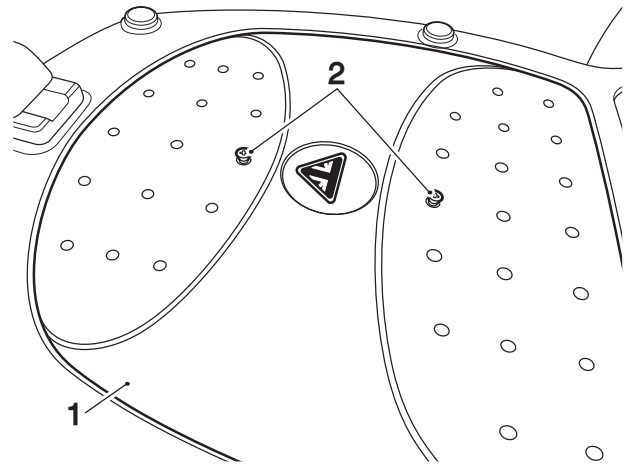
- Mounting platform (Street Twin shown)
- Square washer
- Bolt, M6 x 20 mm
- Lock nut, M6

- Tighten the fixings to **9 Nm**.
- Collect the cover plate from the top box mounting kit. Align the location tangs on the cover plate with the recess points on the mounting platform and clip the cover plate onto the mounting platform.



- Cover plate
- Mounting platform
- Location tang

- Fit the two 2.2 x 16 mm screws from the top box mounting kit to secure the cover plate in position.



- Cover plate
- Screw, 2.2 x 16 mm

⚠ WARNING

Always ensure that any load carried on the mounting rack is correctly secured such that it will not move around while the motorcycle is in motion.

An adhesive label on the mounting rack details the maximum safe load for the mounting rack, which is 3 kg (6.6 lbs).

Incorrect loading may result in an unsafe riding condition, which may result in loss of motorcycle control and an accident.

⚠ WARNING

Always ensure that any load carried on the mounting rack is correctly secured such that it will not move around while the motorcycle is in motion.

An adhesive label on the mounting rack details the maximum safe load for the mounting rack, which is 3 kg (6.6 lbs).

Incorrect loading may result in an unsafe riding condition.

⚠ WARNING

After fitting the accessory kit the motorcycle will exhibit new handling characteristics.

Operate the motorcycle in a safe area free from traffic to gain familiarity with any new characteristics.

Operation of the motorcycle when not familiar with any new handling characteristics may lead to loss of motorcycle control which could result in serious injury or death.

⚠ WARNING

If, after fitting this accessory kit, you have any doubt about the performance of any aspect of the motorcycle, contact a competent person with the specialist knowledge and technical understanding of motorcycles, such as an authorised Triumph dealer.

Riding a motorcycle when there is any doubt as to any aspect of the performance of the motorcycle may lead to loss of motorcycle control which could result in serious injury or death.

⚠ WARNING

Never ride an accessory-equipped motorcycle at speeds above 80 mph (130 km/h).

Remember that the 80 mph (130 km/h) limit will be reduced by the fitting of non-approved accessories, incorrect loading, worn tyres, overall motorcycle condition and poor road or weather conditions.

The presence of accessories will cause changes in the stability and handling of the motorcycle. Failure to allow for changes in motorcycle stability may lead to loss of motorcycle control which could result in serious injury or death.

⚠ WARNING

High-speed operation should only be attempted by riders who have been instructed in the techniques necessary for high-speed riding and are familiar with the motorcycle's characteristics in all conditions.

Only operate this Triumph motorcycle at high speed in closed-course, on-road competition or on closed-course racetracks.

High-speed operation in any other circumstances is dangerous and may lead to loss of motorcycle control which could result in serious injury or death.

NOTICE

The motorcycle must not be operated above the legal road speed limit except in closed-course conditions.