

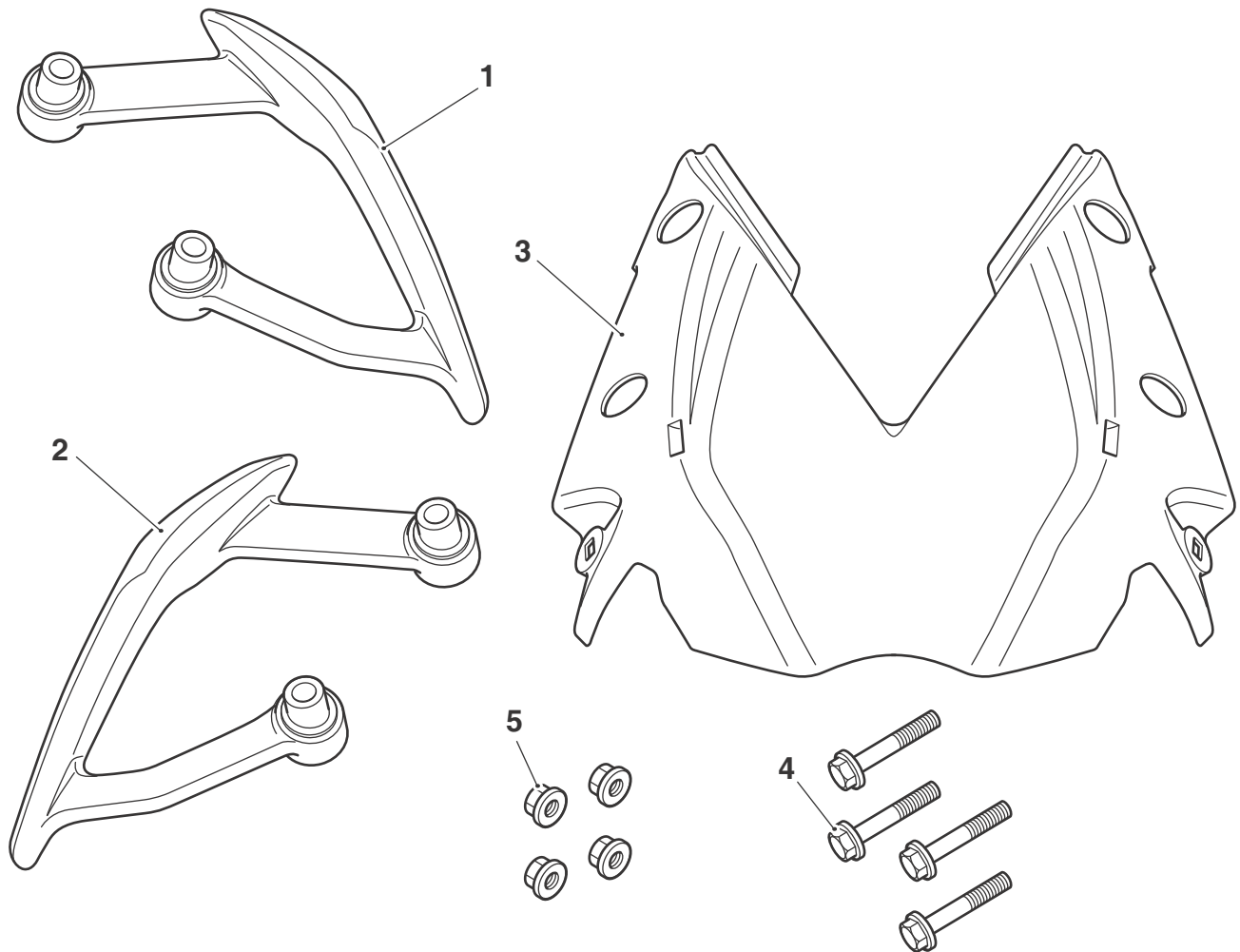
Fitting Instructions:

Street Triple from VIN 560477 and Street Triple R from VIN 560477 A9758174

Thank you for choosing this Triumph genuine accessory kit. This accessory kit is the product of Triumph's use of proven engineering, exhaustive testing, and continuous striving for superior reliability, safety and performance.

Completely read all of these instructions before commencing the installation of the accessory kit in order to become thoroughly familiar with the kit's features and the installation process.

These instructions should be considered a permanent part of your accessory kit, and should remain with it even if your accessory-equipped motorcycle is subsequently sold.



T1400

Parts Supplied:

1. Grab handle, right-hand	1 off	4. Screw, M8 x 50 mm	4 off
2. Grab handle, left-hand	1 off	5. Locknut, M8	4 off
3. Undertray	1 off		



Warning

This accessory kit is designed for use on Triumph Street Triple from VIN 560477 and Street Triple R from VIN 560477 motorcycles only and should not be fitted to any other Triumph model or any other manufacturer's motorcycle. Fitting this accessory kit to any other Triumph model or manufacturer's motorcycle will affect the performance, stability and handling of the motorcycle. This may affect the rider's ability to control the motorcycle and could cause an accident.



Warning

Always have Triumph approved parts, accessories and conversions fitted by a trained technician of an authorised Triumph dealer. The fitment of parts, accessories and conversions by a technician who is not of an authorised Triumph dealer may affect the handling, stability or other aspects of the motorcycle's operation which may result in loss of motorcycle control and an accident.



Warning

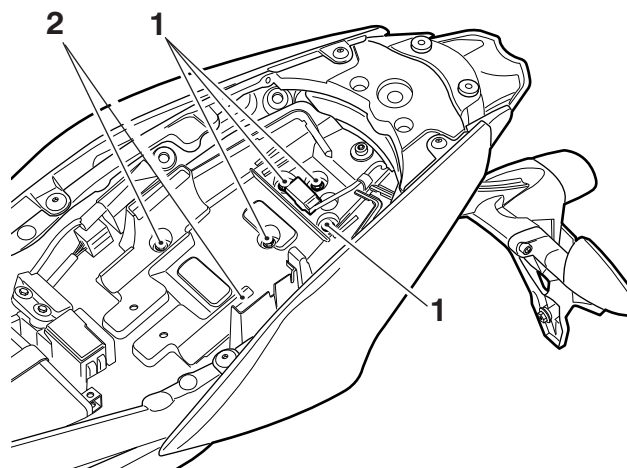
Throughout this operation, ensure that the motorcycle is stabilised and adequately supported to prevent risk of injury from the motorcycle falling.



Warning

A torque wrench of known accurate calibration must be used when fitting this accessory kit. Failure to tighten any of the fasteners to the correct torque specification may result in loss of motorcycle control and an accident.

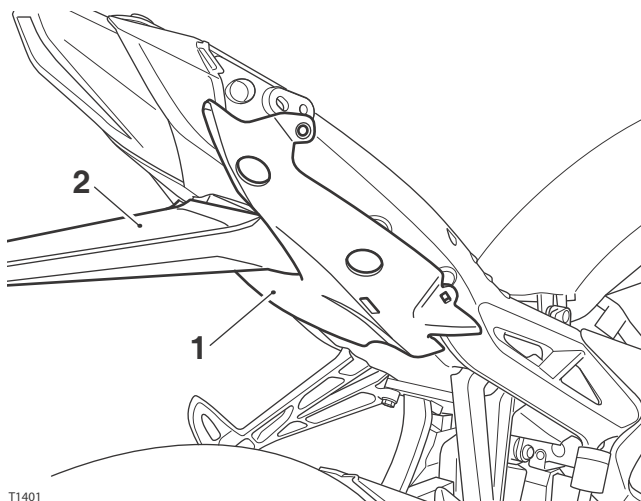
1. Remove the seat, as described in the owner's handbook.
2. Remove the left-hand and right-hand rear bodywork panels, as described in the service manual.
3. Loosen the four fixings for the licence plate bracket. Do not remove the fixings.
4. Remove the two scrivenets securing the undertray to the rear mudguard.



1. Fixings, licence plate bracket

2. Scrivenets

5. Remove the undertray as described in the service manual. Retain the undertray for use if the motorcycle is returned to its original condition. Retain the fixings for re-use.
6. Fit the new undertray from the kit, ensuring it locates under the licence plate bracket.

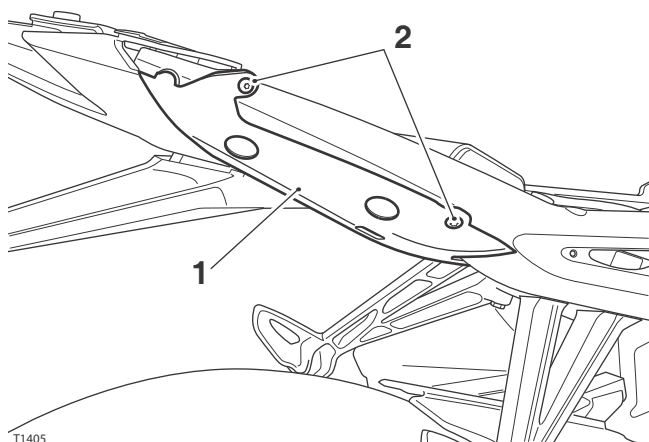


T1401

1. New undertray

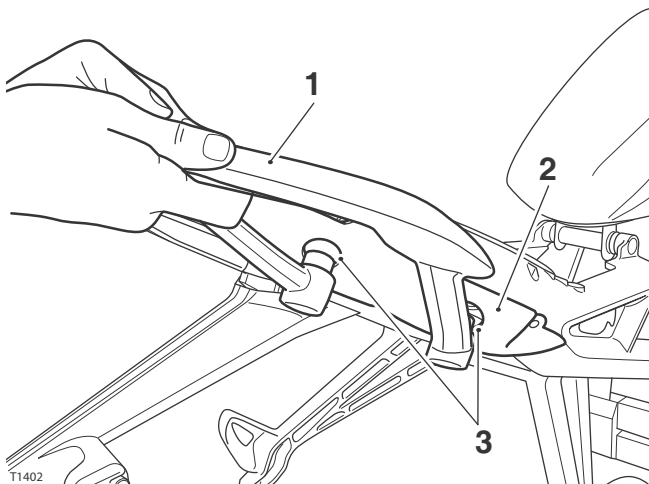
2. Licence plate bracket

7. Secure the new undertray with the original fixings. Tighten the fixings to **3 Nm**.



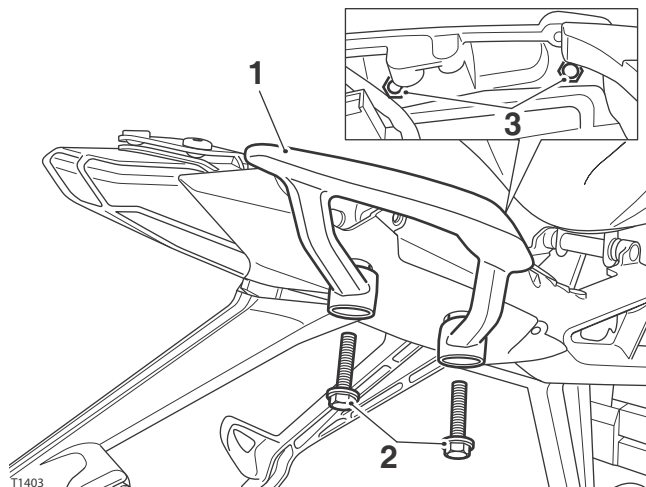
- 1. New undertray**
2. Original fixings, right-hand shown

8. Tighten the licence plate bracket fixings to **8 Nm**.
9. Locate the right-hand grab handle in position through the access holes in the new undertray. Align the fixing holes of the grab handle with the mounting holes on the motorcycle frame.



- 1. Grab handle, right-hand side**
2. Undertray
3. Access holes

10. Fit the M8 x 50 mm screws through the grab handle and motorcycle frame, from the underside, and secure with the M8 locknuts.



- 1. Grab handle**
2. Screw, M8 x 50 mm
3. Locknut, M8

11. Tighten the locknuts to **20 Nm**.
12. Repeat steps 8 and 10 for the left-hand side.
13. Refit the left-hand and right-hand rear bodywork panels, as described in the service manual.
14. Refit the seat, as described in the owner's handbook.



Warning

Never ride an accessory-equipped motorcycle at speeds above 80 mph (130 km/h).

The presence of accessories will cause changes in the stability and handling of the motorcycle. Failure to allow for changes in motorcycle stability may lead to loss of control or an accident.

Remember that the 80 mph (130 km/h) limit will be reduced by the fitting of non-approved accessories, incorrect loading, worn tyres, overall motorcycle condition and poor road or weather conditions.



Warning

Only operate this Triumph motorcycle at high speed in closed course, on-road competition or on closed course race tracks. High speed operation should only be attempted by riders who have been instructed in the techniques necessary for high speed riding and are familiar with the motorcycle's characteristics in all conditions. High speed operation in any other circumstances is dangerous and will lead to loss of motorcycle control and an accident.



Warning

The motorcycle must not be operated above the legal road speed limit except in closed course conditions.