

Fitting Instructions:

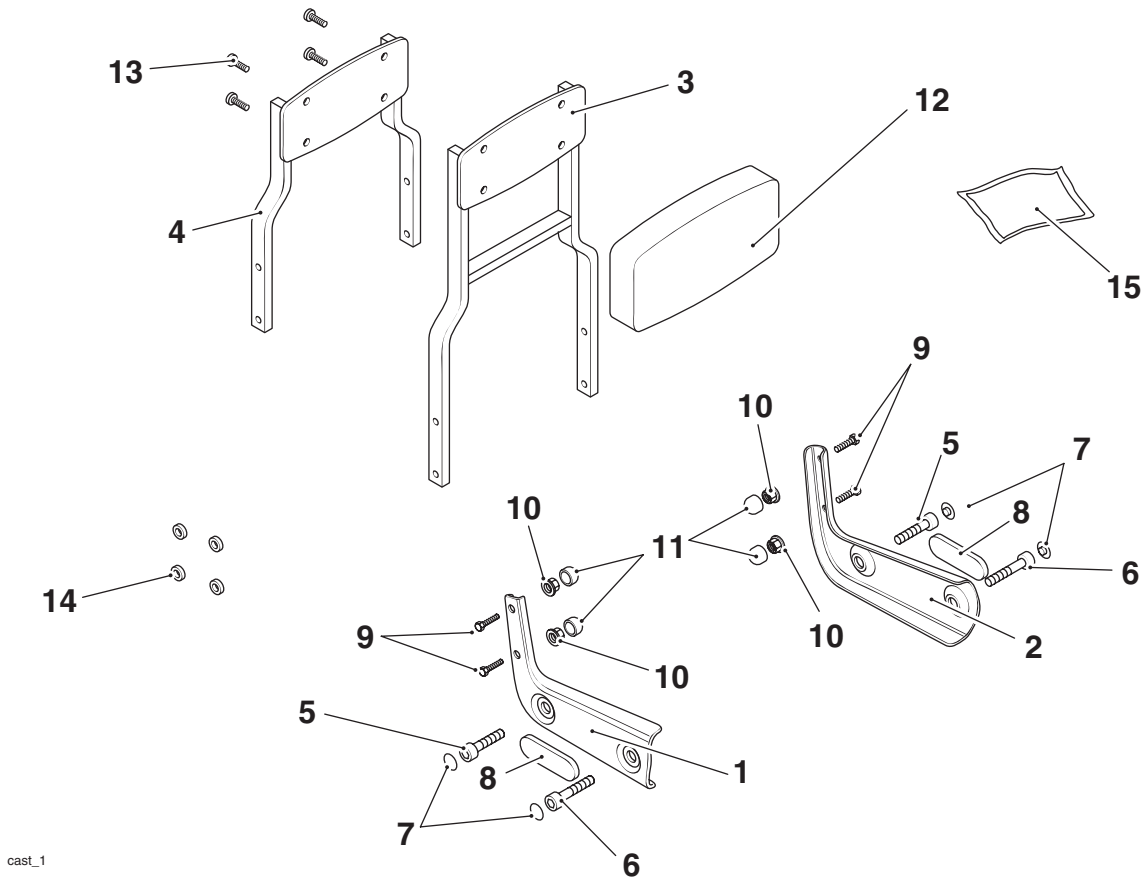
**America from VIN 468391 and Speedmaster from VIN 469051
A9758167, A9758168 and A9758169**

Thank you for choosing this Triumph genuine accessory kit. This accessory kit is the product of Triumph's use of proven engineering, exhaustive testing, and continuous striving for superior reliability, safety and performance.

Completely read all of these instructions before commencing the installation of the accessory kit in order to become thoroughly familiar with the kit's features and the installation process.

These instructions should be considered a permanent part of your accessory kit, and should remain with it even if your accessory-equipped motorcycle is subsequently sold.

A9758167 and A9758168

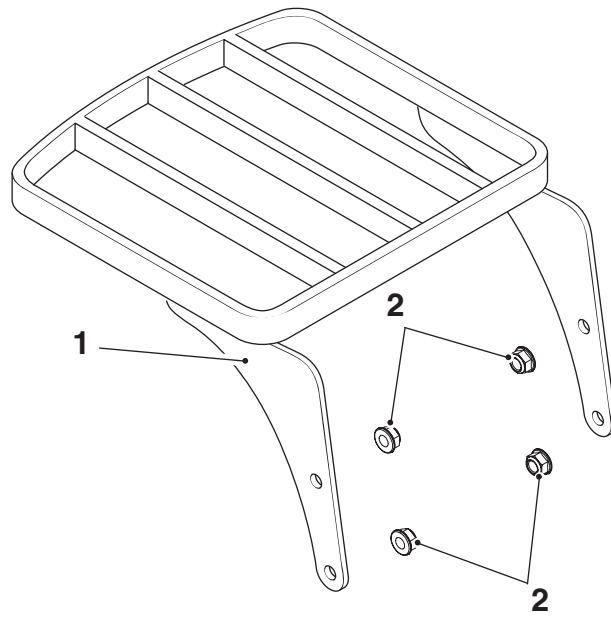


Parts Supplied A9758167 and A9758168:

1. Mounting bracket, right hand	1 off	9. Bolt, M6 x 25 mm	4 off
2. Mounting bracket, left hand	1 off	10. Locknut	4 off
3. Sissy bar, tall (A9758167)	1 off	11. Cap	4 off
4. Sissy bar, standard (A9758168)	1 off	12. Backrest pad	1 off
5. Bolt, M8 x 27 mm	2 off	13. Screw, M6 x 12 mm	4 off
6. Bolt, M8 x 35 mm	2 off	14. Spacer ¹	4 off
7. Plug, chrome	4 off	15. Cleaning wipe	1 off
8. Reflector, red	2 off		

¹ The four spacers in these kits are only to be used if the pannier rail kit A9508159 or the pannier mounting kit A9508154 is also to be fitted.

A9758169



cast_2

Parts Supplied A9758169:

1. Luggage rack

1 off 2. Locknut

4 off

! Warning

This accessory kit is designed for use on Triumph America from VIN 468390 and Speedmaster from VIN 469050 motorcycles only and should not be fitted to any other manufacturer's motorcycle. Fitting this accessory kit to any other manufacturer's motorcycle will affect the performance, stability and handling of the motorcycle. This may affect the rider's ability to control the motorcycle and could cause an accident.

! Warning

Always have Triumph approved parts, accessories and conversions fitted by a trained technician of an authorised Triumph dealer. The fitment of parts, accessories and conversions by a technician who is not of an authorised Triumph dealer may affect the handling, stability or other aspects of the motorcycle's operation which may result in loss of motorcycle control and an accident.

! Warning

Throughout this operation, ensure that the motorcycle is stabilised and adequately supported to prevent risk of injury from the motorcycle falling.

! Warning

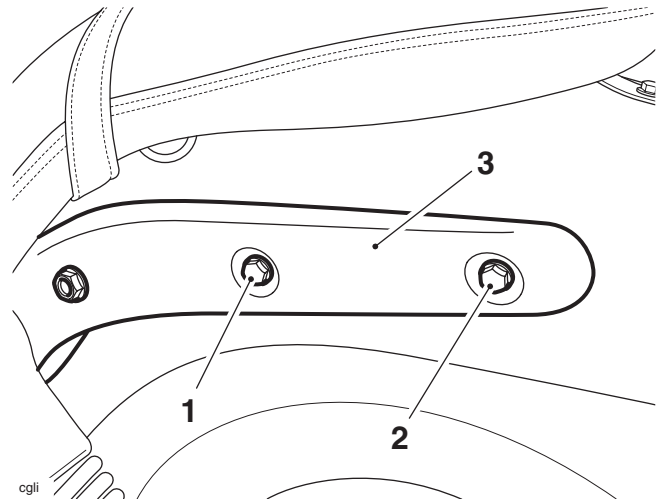
A torque wrench of known accurate calibration must be used when fitting this accessory kit. Failure to tighten any of the fasteners to the correct torque specification may result in loss of motorcycle control and an accident.

1. Disconnect the battery, negative (black) lead first.

Note:

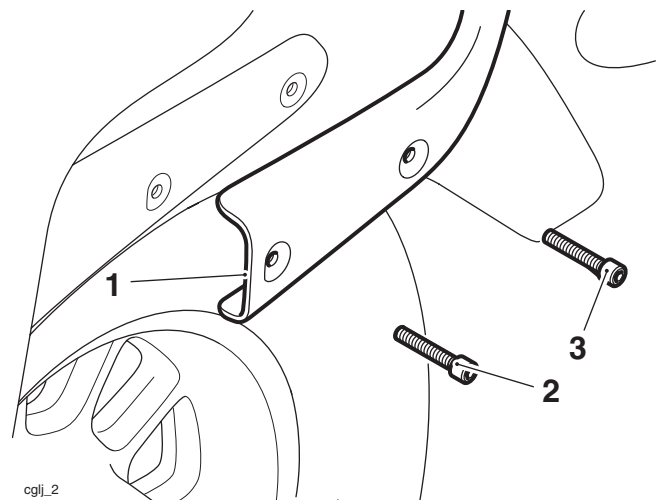
- **Read the warning notices printed on the cleaning wipe packet in the fitting kit.**
2. If fitted, remove the reflectors from the rear mudguard brackets. Clean off any remaining adhesive from the brackets using the cleaning wipe supplied.

3. Remove the centre and rear bolts securing the mudguard brackets. Retain the bolts if the motorcycle is to be returned to its original condition.



1. Bolt, M8 x 33 mm
2. Bolt, M8 x 25 mm
3. Bracket

4. Working on the left hand side, fit the mounting bracket, the M8 x 27 mm and M8 x 35 mm bolts from the kit as shown below. Do not fully tighten the bolts at this stage.



1. Mounting bracket
2. M8 x 35 mm bolt
3. M8 x 27 mm bolt

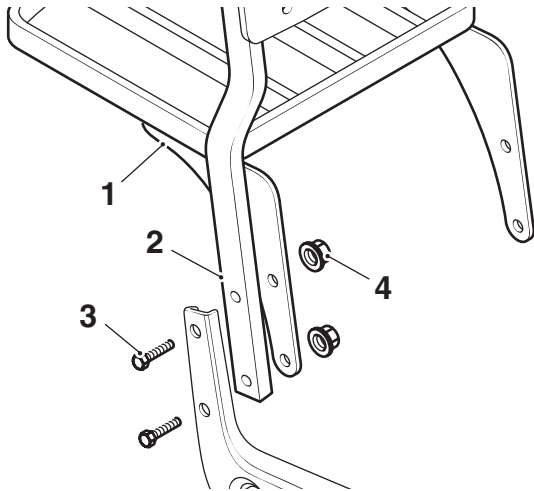
5. Repeat step 4 for the right hand side.
6. Locate the sissy bar into the mounting plates.

Note:

- **If the luggage rack kit A9758169 is not to be fitted, omit step 7.**
7. If fitting the luggage rack kit A9758169, align it to the inside edge of the sissy bar.

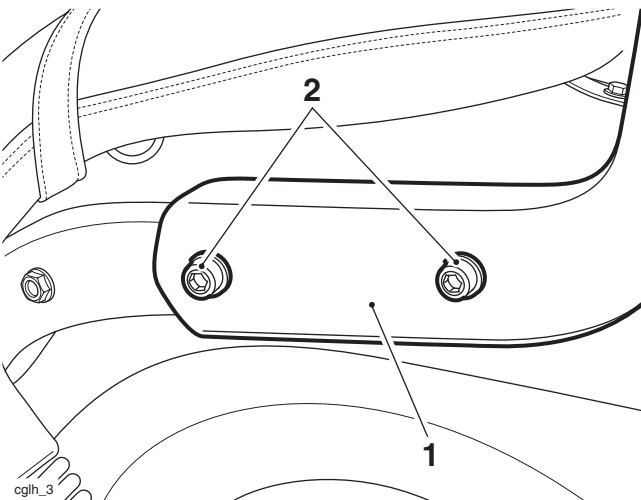
Note:

- If the luggage rack kit A9758169 is being fitted, discard the locknuts from the sissy bar kit A9758167 or A9758168 and use the locknuts from the luggage rack kit.
8. Fit the four M6 bolts and locknuts from the kit. Do not fully tighten at this stage.



- casv_1
- 1. Luggage rack, if fitted
 - 2. Sissy bar
 - 3. Bolts
 - 4. Locknuts

9. Ensure that the sissy bar assembly is aligned centrally on the motorcycle, tighten the four sissy bar M6 bolts to **9 Nm** and fit the four caps to cover the locknuts.
10. Tighten the bolts for the mounting brackets to **25 Nm**.



- cglh_3
- 1. Mounting bracket
 - 2. Bolts

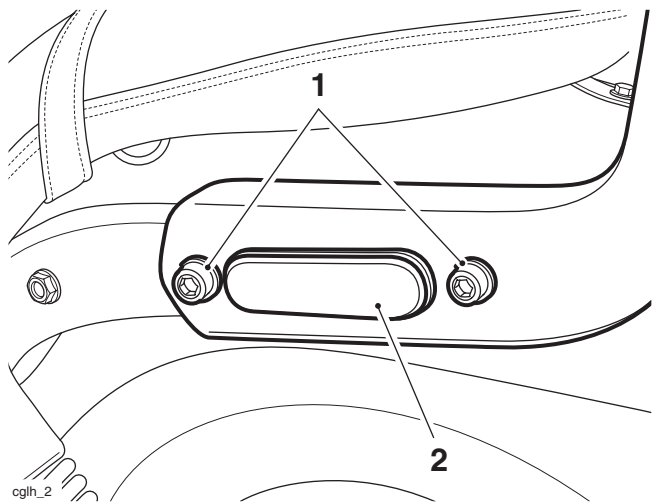
Note:

- Read the warning notices printed on the cleaning wipe packet in the fitting kit.
- The surfaces to which the reflectors are affixed must be clean and dry to ensure that the adhesive has a sound base to adhere to. Use the cleaning wipe supplied for this purpose.

! Caution

When fitting self adhesive parts care must be taken to ensure positioning is correct and accurate. Once the adhesive has been attached to the mounting surface, there is no satisfactory method of removal and re-positioning if incorrectly aligned. Initial bonding is instant, full bonding is achieved after 72 hours.

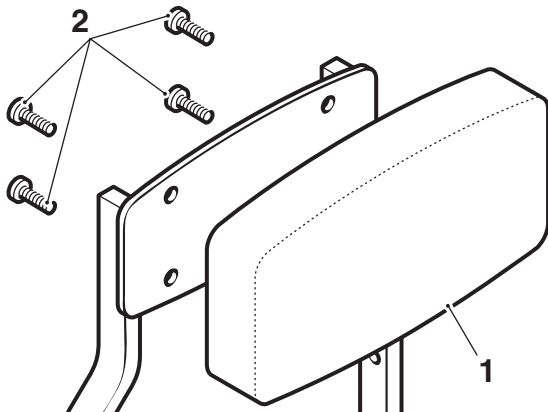
11. Remove the protective strip from the adhesive pad on the base of the reflector. Centrally align it to the mounting bracket between the bolts. Apply a firm and even pressure to ensure a good bond is achieved.



- cglh_2
- 1. Bolts
 - 2. Reflector

12. Fit the chrome plugs from the kit to the bolt heads.

13. Fit the backrest pad and tighten the M6 x 12 mm screws from the kit to **2 Nm**.



- 1. Backrest pad**
2. M6 x 12 mm screws

14. Reconnect the battery, positive (red) lead first.

Warning

After fitting the accessory kit the motorcycle will exhibit new handling characteristics. Operate the motorcycle in a safe area free from traffic to gain familiarity with any new characteristics. Operation of the motorcycle when not familiar with any new handling characteristics may result in loss of motorcycle control and an accident.

Warning

If, after fitment of this accessory kit, you have any doubt about the performance of any aspect of the motorcycle, contact an authorised Triumph dealer and do not ride the motorcycle until the authorised dealer has declared it fit for use. Riding a motorcycle when there is any doubt as to any aspect of the performance of the motorcycle may result in loss of control of the motorcycle leading to an accident.

Warning

Never ride an accessory-equipped motorcycle at speeds above 80 mph (130 km/h).

The presence of accessories will cause changes in the stability and handling of the motorcycle. Failure to allow for changes in motorcycle stability may lead to loss of control or an accident.

Remember that the 80 mph (130 km/h) limit will be reduced by the fitting of non-approved accessories, incorrect loading, worn tyres, overall motorcycle condition and poor road or weather conditions.

Warning

The motorcycle must not be operated above the legal road speed limit except in closed-course conditions.

Warning

Only operate this Triumph motorcycle at high speed in closed-course on road competition or on closed-course racetracks. High speed operation should only be attempted by riders who have been instructed in the techniques necessary for high speed riding and are familiar with the motorcycle's characteristics in all conditions.

High speed operation in any other circumstances is dangerous and will lead to loss of motorcycle control and an accident.