

Fitting Instructions:

Thunderbird, Thunderbird Storm, Thunderbird Commander and Thunderbird LT

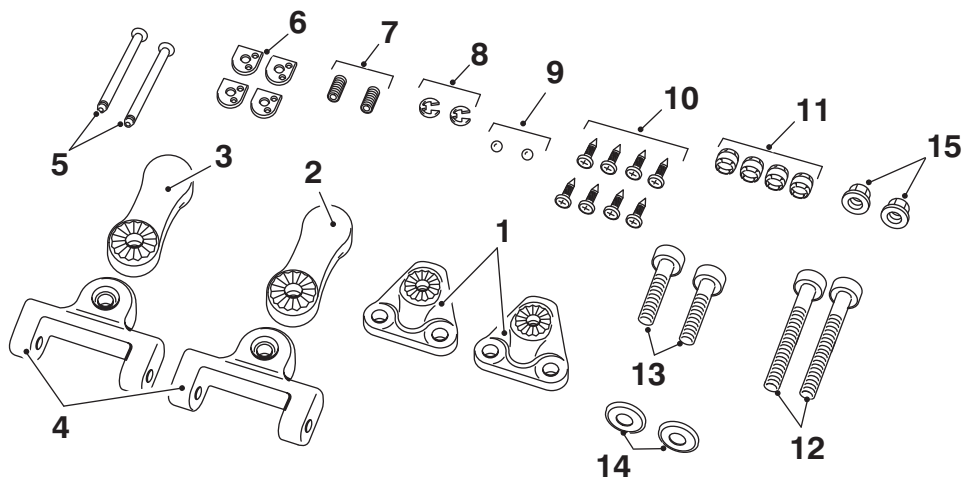
A9758125 and A9758159 or A9758160 or A9758197

Thank you for choosing this Triumph genuine accessory kit. This accessory kit is the product of Triumph's use of proven engineering, exhaustive testing, and continuous striving for superior reliability, safety and performance.

Completely read all of these instructions before commencing the installation of the accessory kit in order to become thoroughly familiar with the kit's features and the installation process.

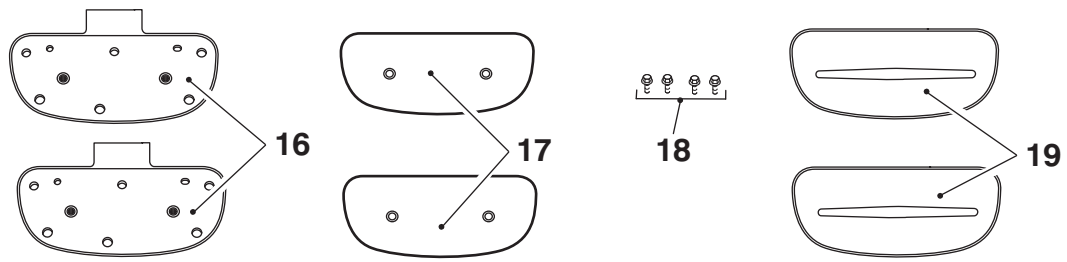
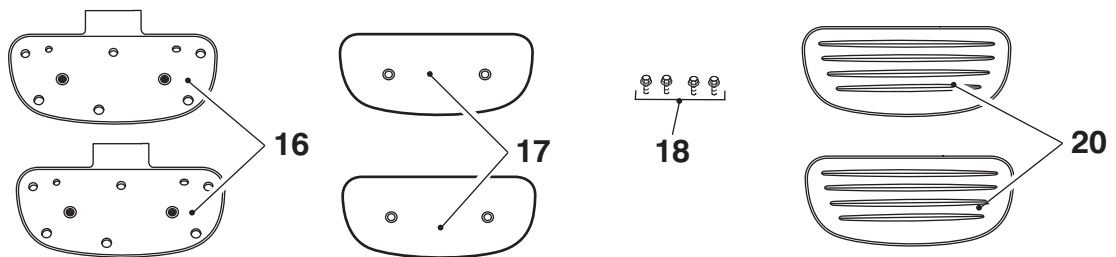
These instructions should be considered a permanent part of your accessory kit, and should remain with it even if your accessory equipped motorcycle is subsequently sold.

A9758125



Parts Supplied:

1. Adjustable mounting bracket	2 off	9. Detent ball	2 off
2. Adjustable arm, left hand	1 off	10. Plastic rivet	8 off
3. Adjustable arm, right hand	1 off	11. Plastic bush	4 off
4. Adjustable clevis	2 off	12. Screw, M8 x 40 mm	2 off
5. Pivot pin	2 off	13. Screw, M8 x 30 mm	2 off
6. Detent plate	4 off	14. Washer, M8	2 off
7. Spring	2 off	15. Nut, M8	2 off
8. E-clip	2 off		

A9758160**A9758159 or A9758197****Parts Supplied:**

16. Footboard	2 off	19. Footboard rubber (A9758160)	2 off
17. Footboard pressing	2 off	20. Footboard rubber (A9758159 or A9758197)	2 off
18. Bolt	4 off		



Warning

This accessory kit is designed for use on Triumph Thunderbird, Thunderbird Storm, Thunderbird Commander and Thunderbird LT motorcycles only and should not be fitted to any other manufacturer's motorcycle. Fitting this accessory kit to any other manufacturer's motorcycle will affect the performance, stability and handling of the motorcycle. This may affect the rider's ability to control the motorcycle and could cause an accident.



Warning

Always have Triumph approved parts, accessories and conversions fitted by a trained technician of an authorised Triumph dealer. The fitment of parts, accessories and conversions by a technician who is not of an authorised Triumph dealer may affect the handling, stability or other aspects of the motorcycle's operation which may result in loss of motorcycle control and an accident.



Warning

Throughout this operation, ensure that the motorcycle is stabilised and adequately supported to prevent risk of injury from the motorcycle falling.

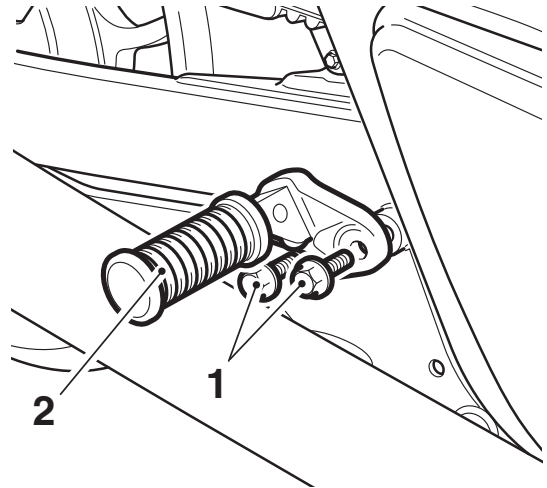


Warning

A torque wrench of known accurate calibration must be used when fitting this accessory kit. Failure to tighten any of the fasteners to the correct torque specification may result in loss of motorcycle control and an accident.

Fitting the Adjustable Mounting Bracket - A9758125

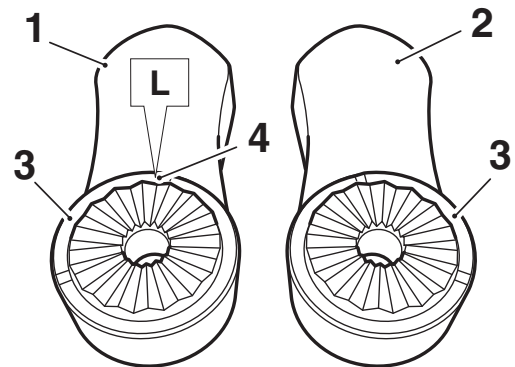
1. Remove the bolts, then remove the pillion footpeg and bracket assembly. Note that the front bolt is longer than the rear bolt for assembly. Retain the footpeg and bracket assembly if the motorcycle is to be returned to its original condition.



1. Bolts
2. Pillion footpeg

Note:

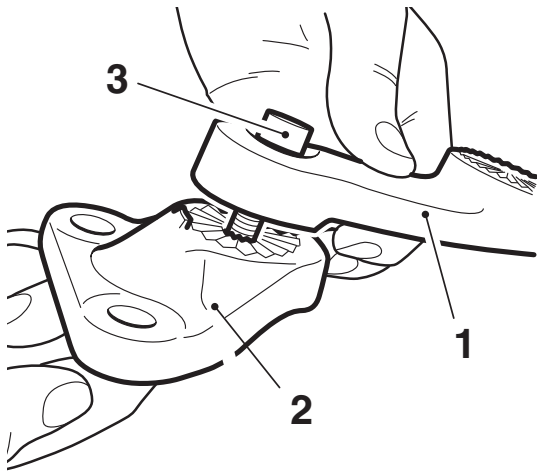
- The left hand adjustable arm has the letter **L** etched on the raised outer circumference of the coarse serrated area.



cfov

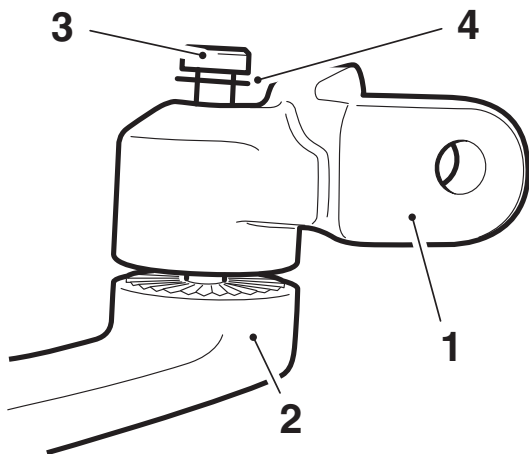
1. Adjustable arm, left hand
2. Adjustable arm, right hand
3. Raised outer circumference
4. Etched L

- Fit the right hand adjustable arm to one of the adjustable mounting brackets and secure with one of the M8 x 30 mm screws and the M8 nut from the kit. Do not fully tighten at this stage.



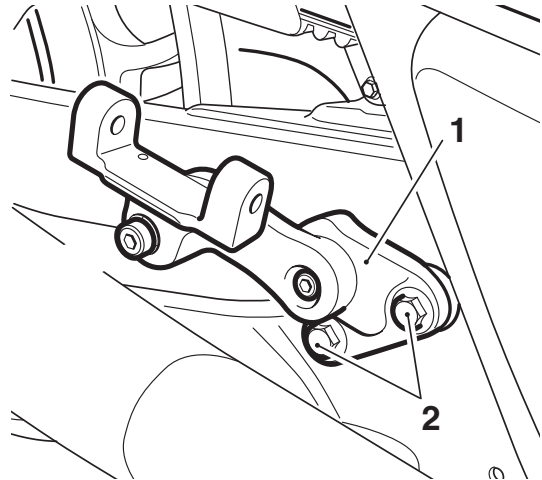
- Adjustable arm, right hand
- Adjustable mounting bracket
- Screw, M8 x 30 mm

- Fit an adjustable clevis to the adjustable arm and secure with one of the M8 x 40 mm screws and the M8 washer. Do not fully tighten at this stage.



- Adjustable clevis
- Adjustable arm
- Screw, M8 x 40 mm
- Washer, M8

- Fit the adjustable mounting bracket to the right hand side of the motorcycle. Fit the original bolts as noted for removal and tighten to **40 Nm**.

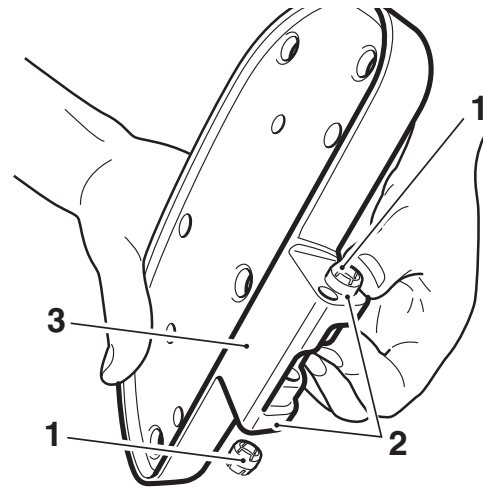


- Adjustable mounting bracket
- Bolts

- Repeat steps 1 to 5 for the left hand side.

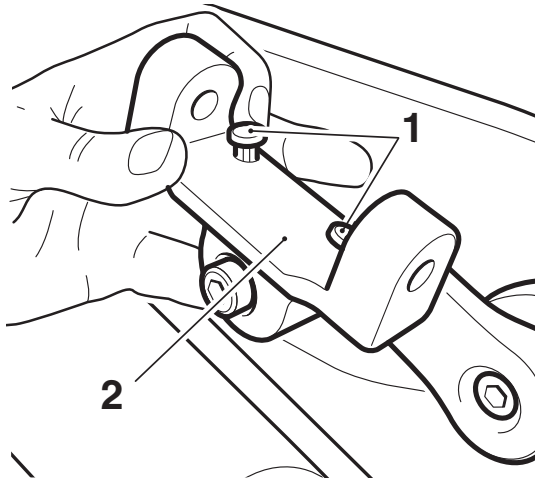
Fitting the Footboard - A9758159, A9758160 or A9758197

- Fit a plastic bush to each of the pivot pin holes in the footboard.



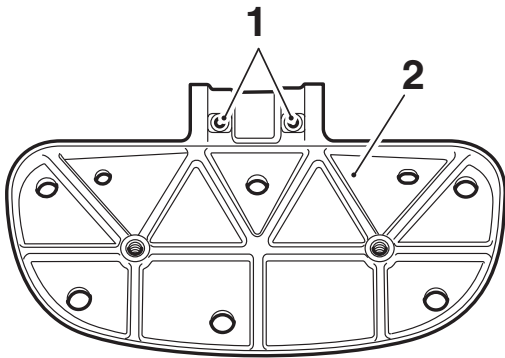
- Plastic bushes
- Pivot pin holes
- Footboard

7. Fit the plastic rivets to the adjustable clevis, two on each clevis.



- 1. Plastic rivets**
2. Adjustable clevis

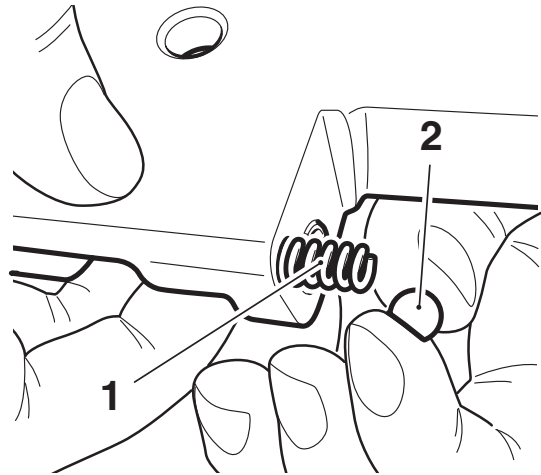
8. Fit the plastic rivets to the footboard, two on each footboard.



cfpf

- 1. Plastic rivets**
2. Footboard

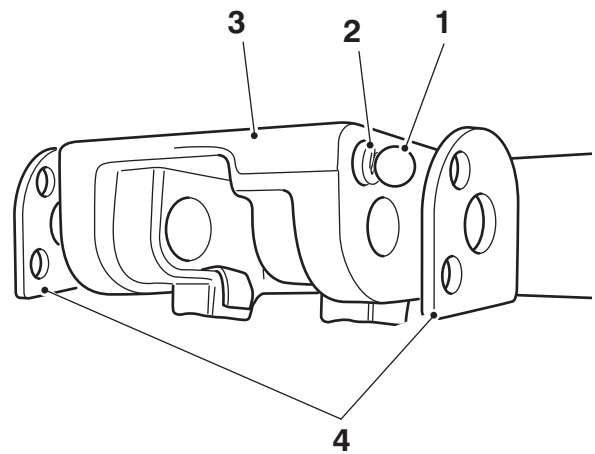
9. Fit the spring and detent ball into the footboard as shown below:



- 1. Spring**
2. Detent ball

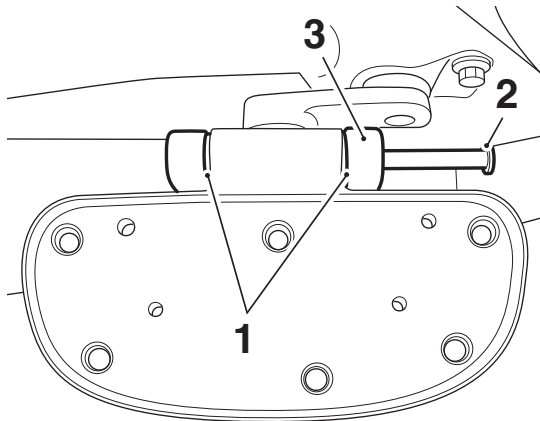
10. Using one of the detent plates, hold the spring and detent ball in place. Ensure that the detent ball aligns with the small hole in the detent plate as shown below.

11. Hold a second detent plate on the other side of the footboard mounting.



- 1. Detent ball**
2. Spring
3. Footboard
4. Detent plates

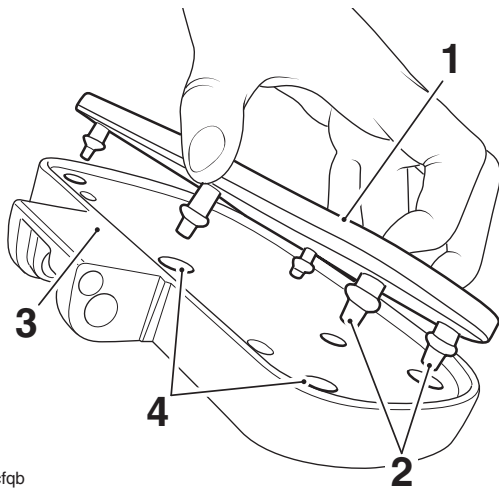
12. While holding the two detent plates in position, align the footboard into the adjustable clevis. Fit the pivot pin from the front of the clevis.



cfpd

- 1. Detent plates
- 2. Pivot pin
- 3. Clevis

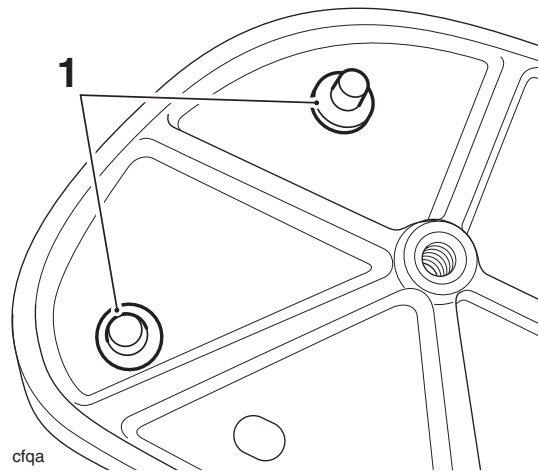
13. Secure the pivot pin with the E-clip.
 14. Align the rubber fixing lugs to the holes in the footboard.



cfqb

- 1. Footboard rubber (A9758160 shown)
- 2. Lugs
- 3. Footboard
- 4. Holes

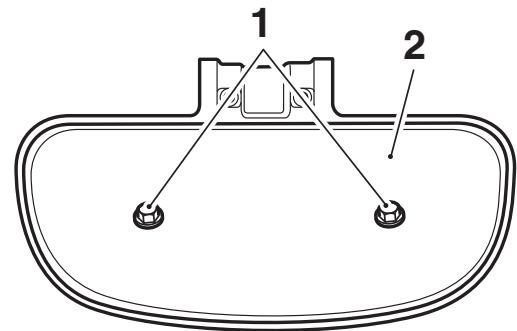
15. Pull the lugs from underneath the plate until the flange on the lugs are fully pulled through. Care should be taken not to damage the rubber during this operation.



cfqa

- 1. Lugs (A9758160 shown)

16. Fit the footboard pressing to the underside of the footboard. Tighten the bolts to **9 Nm**.



cfpf_1

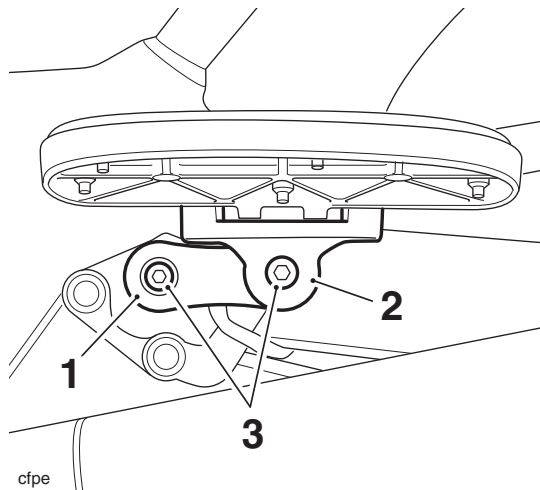
- 1. Bolts
- 2. Pressing

Adjusting the Footboard Position

The position of the pillion footboard can be adjusted. To adjust its position, carry out the following:

Note:

- **To prevent damage to other components, support the footboard when loosening the adjustable arm and clevis bolts.**
17. Loosen the bolts for the adjustable arm and the adjustable clevis.



1. Adjustable arm
2. Adjustable clevis
3. Bolts

18. Move the footboard to the pillion's preferred position and tighten the bolts to **36 Nm**.



Warning

If, after fitment of this accessory kit, you have any doubt about the performance of any aspect of the motorcycle, contact an authorised Triumph dealer and do not ride the motorcycle until the authorised dealer has declared it fit for use. Riding a motorcycle when there is any doubt as to any aspect of the performance of the motorcycle may result in loss of control of the motorcycle leading to an accident.



Warning

Never ride an accessory equipped motorcycle at speeds above 80 mph (130 km/h).

The presence of accessories will cause changes in the stability and handling of the motorcycle. Failure to allow for changes in motorcycle stability may lead to loss of control or an accident.

Remember that the 80 mph (130 km/h) limit will be reduced by the fitting of non-approved accessories, incorrect loading, worn tyres, overall motorcycle condition and poor road or weather conditions.



Warning

Only operate this Triumph motorcycle at high speed in closed course, on-road competition or on closed course racetracks. High speed operation should only be attempted by riders who have been instructed in the techniques necessary for high speed riding and are familiar with the motorcycle's characteristics in all conditions.

High speed operation in any other circumstances is dangerous and will lead to loss of motorcycle control and an accident.



Warning

The motorcycle must not be operated above the legal road speed limit except in closed course conditions.