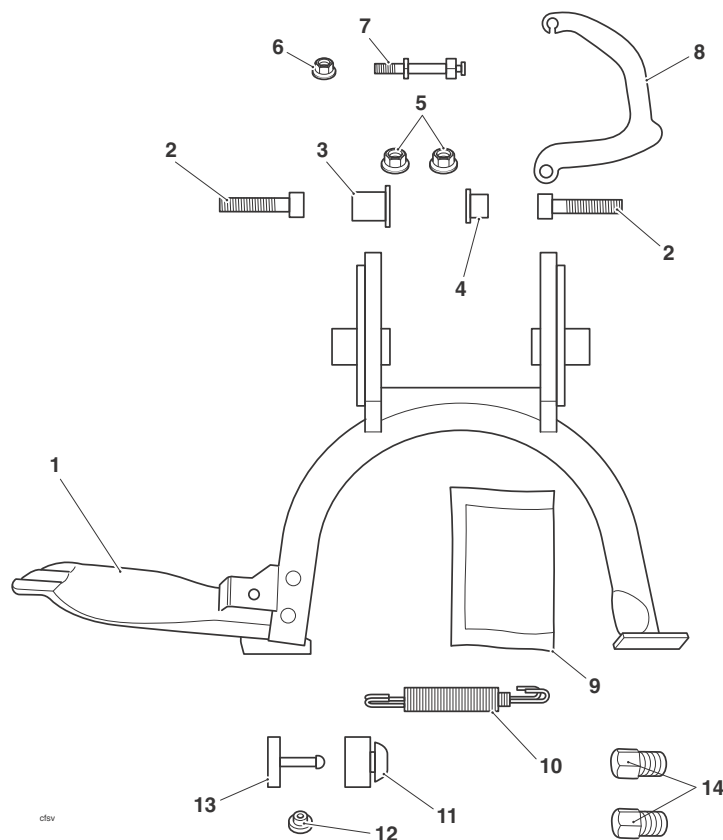


Fitting Instructions: Bonneville A9758145

Thank you for choosing this Triumph genuine accessory kit. This accessory kit is the product of Triumph's use of proven engineering, exhaustive testing, and continuous striving for superior reliability, safety and performance.

Completely read all of these instructions before commencing the installation of the accessory kit in order to become thoroughly familiar with the kit's features and the installation process.

These instructions should be considered a permanent part of your accessory kit, and should remain with it even if your accessory equipped motorcycle is subsequently sold.



Parts Supplied:

1. Centre stand	1 off	8. C-bracket	1 off
2. Bolt, M10	2 off	9. Grease	1 off
3. Flanged sleeve, 24.5 mm	1 off	10. Spring	1 off
4. Flanged sleeve, 17 mm	1 off	11. Rubber stop	1 off
5. Locknut, M10	2 off	12. Rubber extension	1 off
6. Locknut, M8	1 off	13. Plastic extension	1 off
7. Spring retainer	1 off	14. Bank angle indicator	2 off



Warning

This accessory kit is designed for use on Triumph Bonneville motorcycles only and should not be fitted to any other Triumph model or to any other manufacturer's motorcycle. Fitting this accessory kit to any other Triumph model or to any other manufacturer's motorcycle, may interfere with the rider and could affect the stability or other aspects of the motorcycle's operation which may result in loss of motorcycle control and an accident.



Warning

Always have Triumph approved parts, accessories and conversions fitted by a trained technician of an authorised Triumph dealer. The fitment of parts, accessories and conversions by a technician who is not of an authorised Triumph dealer may affect the handling, stability or other aspects of the motorcycle's operation which may result in loss of motorcycle control and an accident.



Warning

When fitting this accessory kit, ensure that the motorcycle is stabilised and adequately supported to prevent risk of injury from the motorcycle falling.



Warning

Failure to tighten any of the fasteners to the correct torque specification may result in loss of motorcycle control and an accident. Always use a calibrated torque wrench.

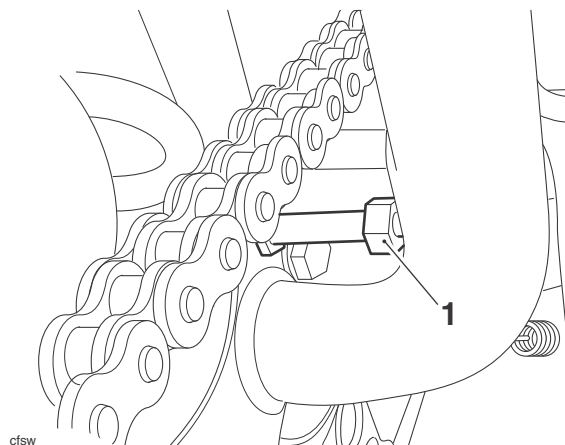
Note:

- **Arrow exhaust system kits for this model are not compatible with this centre stand kit.**

1. Fit the spring retainer to the hole on the right hand plate on the lower frame as shown below. Fit the M8 locknut and tighten to **27 Nm**.

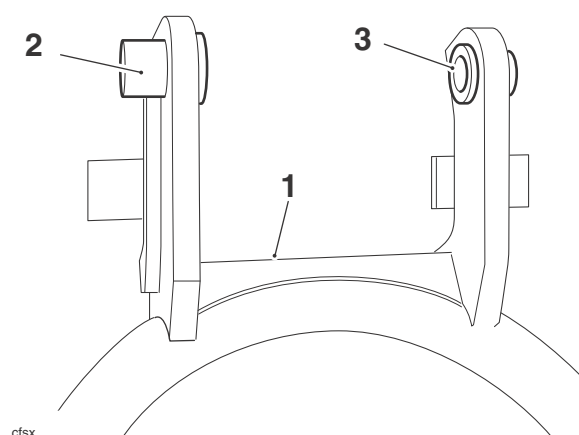
Note:

- **On California models, temporarily release and reposition the evaporative canister to improve access.**



1. Spring retainer

2. Lubricate the flanged sleeves with the grease supplied.
3. Fit the flanged sleeves to the stand ensuring each sleeve is fitted from the centre as shown below.



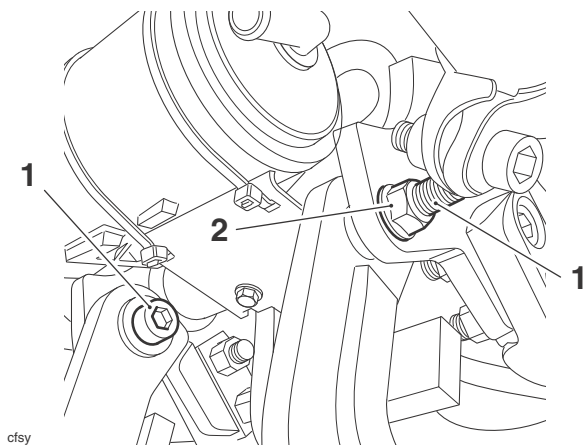
1. Centre stand

2. Flanged sleeve, 24.5 mm

3. Flanged sleeve, 17 mm

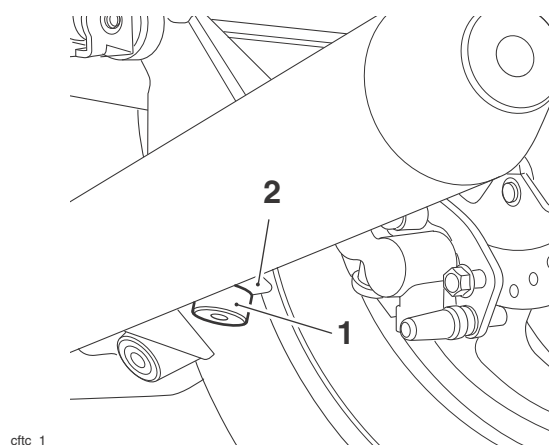
4. Align the centre stand to the mounting brackets on the frame. Position the stand in the middle of the brackets.

5. Insert the M10 bolts from the inside so that the threaded end of the bolts face outwards. Fit the M10 locknuts to the bolts and tighten to **45 Nm**.



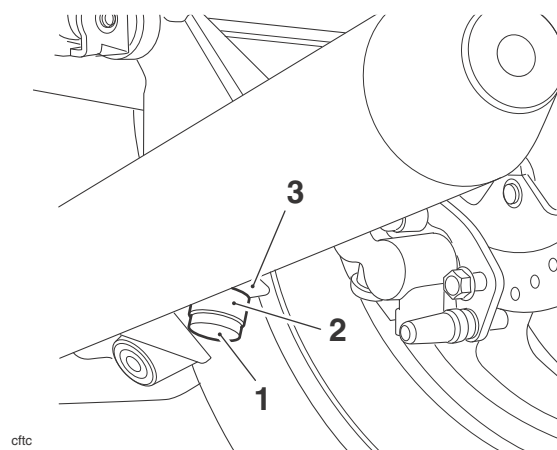
1. Bolts, M10
2. Locknut, M10

6. Fit the rubber stop to the rear hole on the left hand silencer bracket.



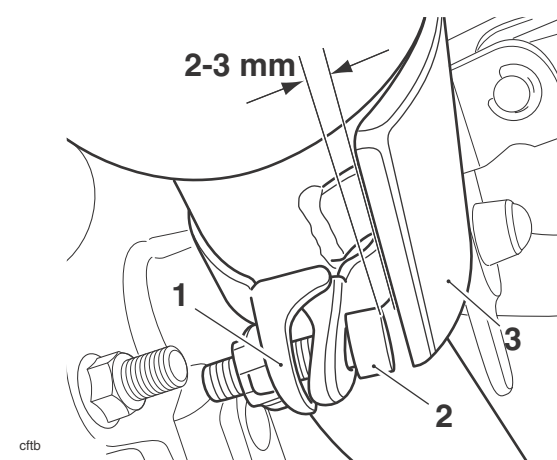
1. Rubber stop
2. Left hand silencer bracket

7. Insert the plastic extension into the rubber stop.



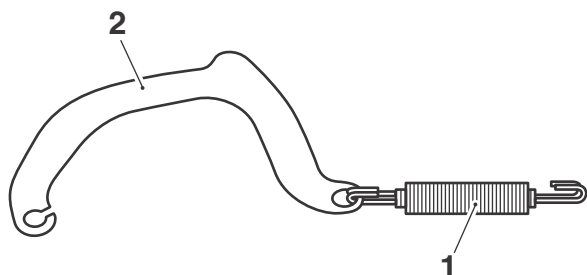
1. Plastic extension
2. Rubber stop
3. Silencer bracket

8. Loosen the clamp securing the right hand silencer to the header pipe.
9. Reposition the silencer clamp such that it is 2 mm from the edge of the silencer and the bolt head is 2 - 3 mm from the silencer shield. Tighten the bolt to **15 Nm**.



1. Silencer clamp
2. Bolt
3. Silencer shield

10. Fit the spring into the hole in the C-bracket.



cfsz

1. Spring

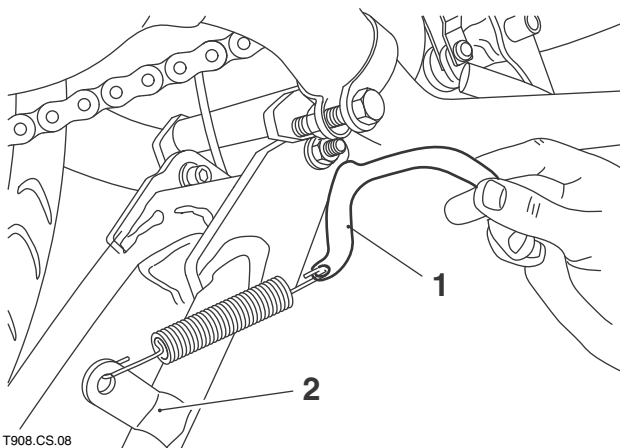
2. C-bracket



Warning

Wear hand, eye and face protection when fitting the spring. Take great care to minimise the risk of personal injury and loss of components.

11. Hook the spring into its lug on the centre stand and locate the slotted end of the C-bracket to the spring retainer fitted in step 1.

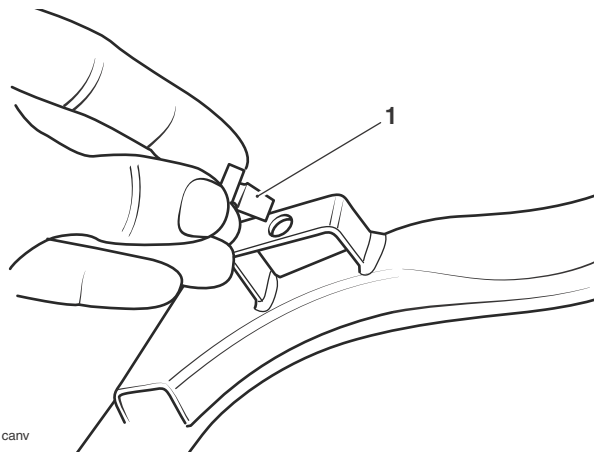


T908.CS.08

1. C-bracket

2. Lug

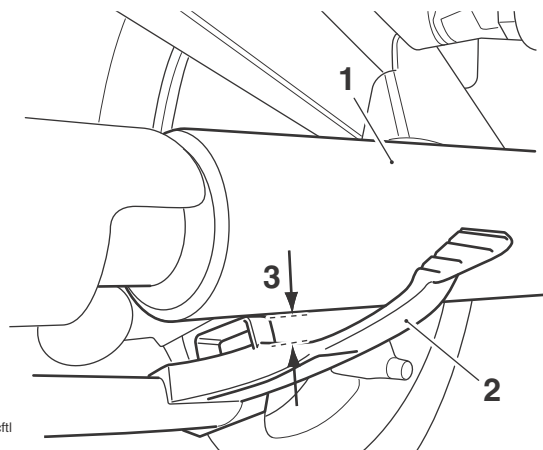
12. Insert the rubber extension into the centre stand bracket as shown.



canv

1. Rubber extension

13. If the gap between the centre stand foot finder and the under side of the silencer is greater than 10 mm, remove the rubber extension fitted in step 12.



cftl

1. Silencer

2. Centre stand foot finder

3. Gap to be measured

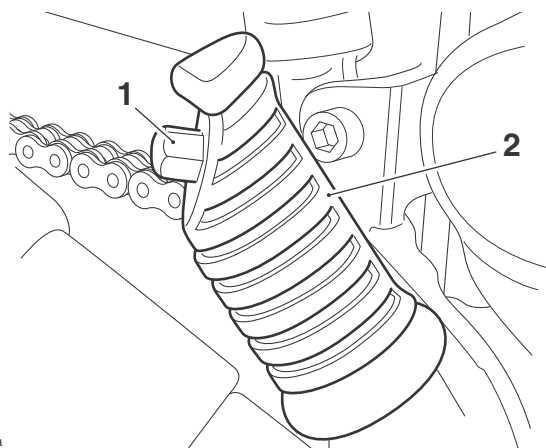
Note:

- On California models, refit the evaporative canister. Tighten the fixings to 12 Nm.

14. Operate the centre stand a few times then re-torque the M10 bolts to **45 Nm**.

15. Remove the bank angle indicators from the rider's footrests. Retain them if the motorcycle is to be returned to its original condition.

16. Fit the bank angle indicators from the kit and tighten to **10 Nm**.



cfta

1. Bank angle indicator

2. Rider's footpeg

17. Check the operation of the centre stand, ensuring the spring holds it securely in the retracted position and does not foul the exhaust clamp.
18. Every year or 6,000 miles (10,000 km) (whichever is sooner):
- Detach the spring and remove the centre stand nuts and bolts (discard the nuts);
 - Lubricate the flanged sleeves with grease to NLGI 2 specification (we recommend Mobil HP222);
 - Install the bolts and new nuts;
 - Tighten the nuts to **45 Nm**;
 - Refit the spring.



Warning

After fitting the accessory kit the motorcycle will exhibit new handling characteristics. Operate the motorcycle in a safe area free from traffic to gain familiarity with any new handling characteristics. Operation of the motorcycle when not familiar with any new handling characteristics may result in loss of motorcycle control and an accident.



Warning

Never ride an accessory equipped motorcycle (including those fitted with Triumph approved windscreens and luggage systems) at speeds above 80 mph (130 km/h).

The presence of accessories such as windscreens and luggage systems will cause changes in the stability and handling of the motorcycle. Failure to allow for changes in motorcycle stability may lead to loss of control or an accident.

Remember that the 80 mph (130 km/h) limit will be reduced by the fitting of non-approved accessories, incorrect loading, worn tyres, overall motorcycle condition and poor road or weather conditions.



Warning

If, after fitment of this accessory kit, you have any doubt about the performance of any aspect of the motorcycle, contact an authorised Triumph dealer and do not ride the motorcycle until the authorised dealer has declared it fit for use. Riding a motorcycle when there is any doubt as to any aspect of the performance of the motorcycle may result in loss of control of the motorcycle leading to an accident.



Warning

This motorcycle must not be operated above the legal road speed limit except in authorised closed-course conditions.



Warning

Only operate this Triumph motorcycle at high speed in closed-course on-road competition or on closed-course racetracks. High speed operation should only be attempted by riders who have been instructed in the techniques necessary for high speed riding and are familiar with the motorcycle's characteristics in all conditions.

High speed operation in any other circumstances is dangerous and will lead to loss of motorcycle control and an accident.

To set the motorcycle up on the centre stand, step down firmly on the foot-finder part of the stand, then lift the motorcycle up and to the rear using the frame under the seat as a hand-hold.



Caution

Do not use the seat as a hand-hold when placing the motorcycle on the centre stand as this will cause damage.