

**Fitting Instructions:
Rocket III Touring
Pannier Guard Rail Kit, Chrome - A9758115**



Thank you for choosing this Triumph genuine accessory kit. This accessory kit is the product of Triumph's use of proven engineering, exhaustive testing, and continuous striving for superior reliability, safety and performance.

Completely read all of these instructions before commencing the installation of the accessory kit in order to become thoroughly familiar with the kit's features and the installation process.

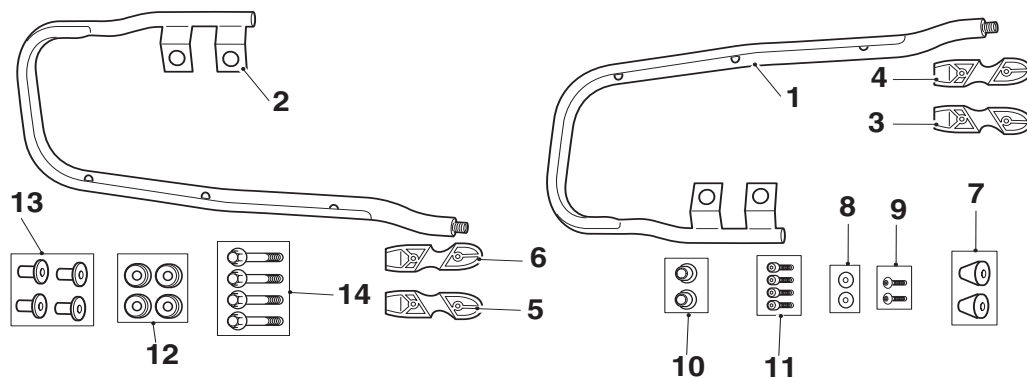
These instructions should be considered a permanent part of your accessory kit, and should remain with it even if your accessory equipped motorcycle is subsequently sold.

Warning

This accessory kit is designed for use on Triumph Rocket III Touring motorcycles only and should not be fitted to any other Triumph model or to any other manufacturers motorcycle. Fitting this accessory kit to any other Triumph model, or to any other manufacturers motorcycle, may interfere with the rider and could affect the handling, stability or other aspects of the motorcycles operation which may result in loss of motorcycle control and an accident.

Warning

Always have Triumph approved parts, accessories and conversions fitted by a trained technician of an authorised Triumph dealer. The fitment of parts, accessories and conversions by a technician who is not of an authorised Triumph dealer may affect the handling, stability or other aspects of the motorcycles operation which may result in loss of motorcycle control and an accident.



Parts Supplied:

1. Pannier guard rail, left hand	1 off	8. Washer, M5	2 off
2. Pannier guard rail, right hand	1 off	9. Screw, M5 x 16	2 off
3. Inner clamp, left hand	1 off	10. End plug	2 off
4. Outer clamp, left hand	1 off	11. Screw, M6 x 20	4 off
5. Inner clamp, right hand	1 off	12. Grommet	4 off
6. Outer clamp, right hand	1 off	13. Sleeve	4 off
7. Rubber bush	2 off	14. Bolt, M8 x 50	4 off

! Warning

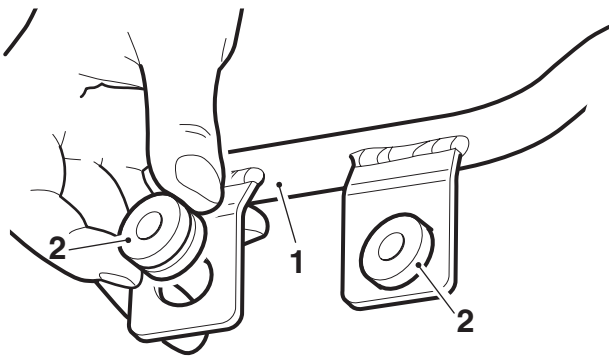
Throughout this operation, ensure that the motorcycle is stabilised and adequately supported to prevent risk of injury from the motorcycle falling.

! Warning

A torque wrench of known accurate calibration must be used when fitting this accessory kit. Failure to tighten any of the fasteners to the correct torque specification may result in loss of motorcycle control and an accident.

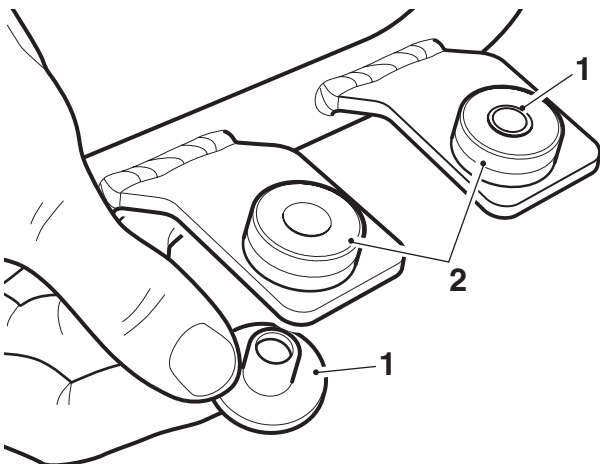
Pannier Guard Rail Pre-Assembly

1. Fit the grommets provided into the left hand side guard rail rear fixing positions.



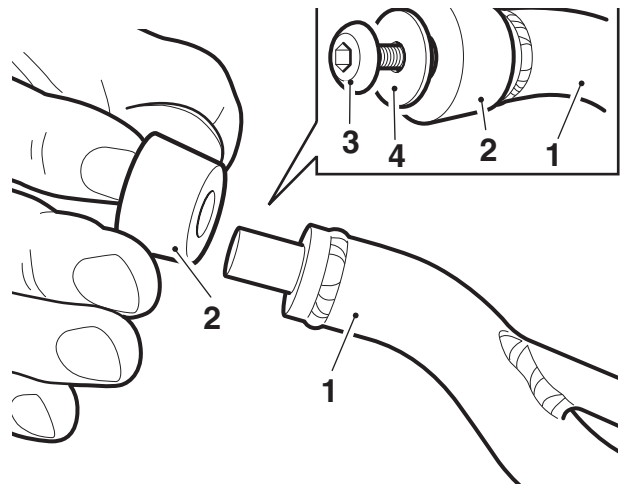
1. Guard rail, left hand shown
2. Grommets

2. Fit the sleeves into the grommets, as shown below.



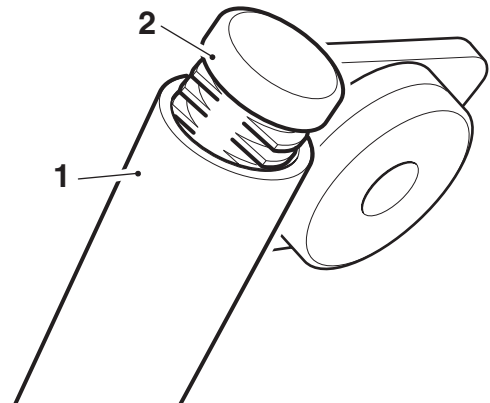
1. Sleeves
2. Grommets

3. Fit a rubber bush into the left hand guard rail, front fixing point and secure with an M5 x 16 screw and washer, as shown below. Tighten the screw to **6 Nm**.



1. Guard rail
2. Rubber bush
3. Screw, M5 x 16
4. Washer, M5

4. Fit one of the end plugs into the guard rail, as shown.

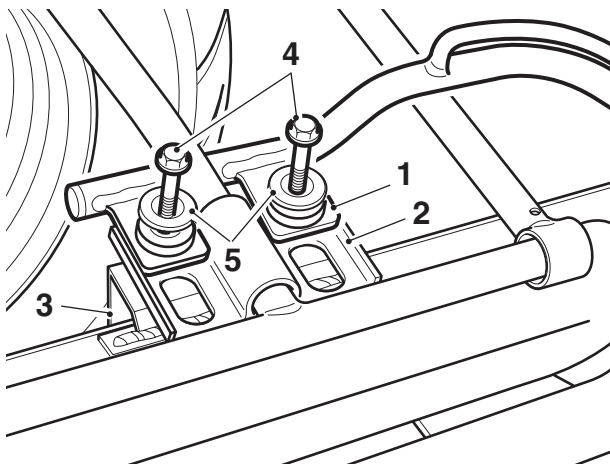


1. Guard rail
2. End plug

5. Repeat steps 1 to 4 for the right hand side pannier guard rail.

Fitting the Pannier Guard rails to the Motorcycle

6. Remove the panniers as described in the service manual.
7. Place a suitable support under the left hand side rear silencer, to prevent the silencer from dropping when the fixings are removed.
8. Remove the left hand silencer rear fixing bolts and washers. Retain the fixing bolts if the motorcycle is to be returned to its original condition. Retain the washers for reuse.
9. Locate the left hand guard rail assembly onto the motorcycle. Align the fixing position with the silencer mounting point. Raise the silencer. Fit new M8 x 50 bolts, with the original washers, to secure the guard rail and silencer. Do not fully tighten the fixings at this stage.

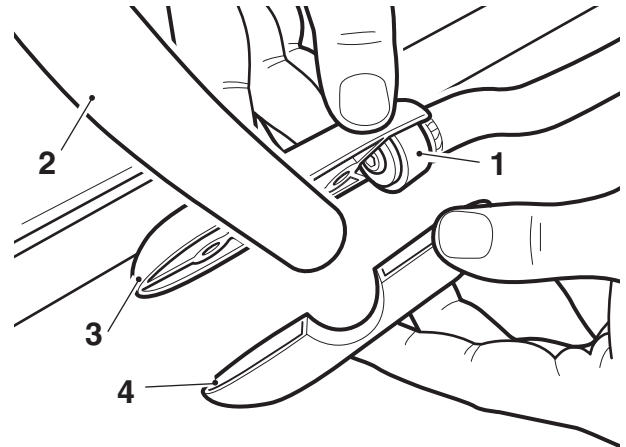


1. Guard rail, left hand side shown
2. Rear silencer mounting point
3. Silencer
4. Bolt, M8 x 50
5. Washer

10. Fit the left hand, inner and outer, clamp brackets over the rubber bush on the guard rail and rear dresser bar, as shown.

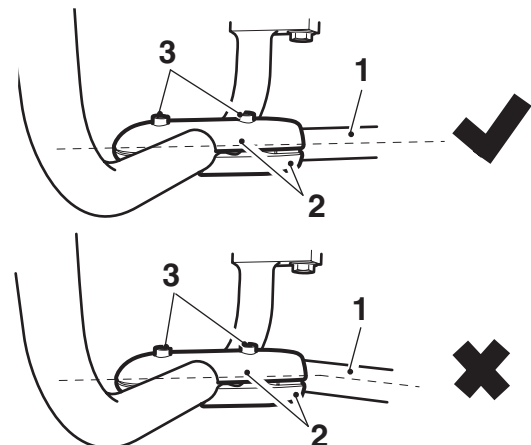
Note:

- The clamp bracket with the blind threaded holes fits to the outside (outer clamp). The clamp bracket with the through holes fits to the inside (inner clamp).



1. Rubber bush, guard rail
2. Rear dresser bar
3. Inner clamp
4. Outer clamp

11. Secure the clamps with two M6 x 20 screws. Note, the screw heads should face the centre of the motorcycle.
12. Ensure the clamp brackets are aligned with the guard rail, as shown below. Tighten the fixings evenly to **9 Nm**.



1. Guard rail
2. Clamp brackets
3. Fixings

13. Tighten the rear silencer/pannier guard rail fixings to **22 Nm**.
14. Repeat steps 6 to 13 for the right hand pannier guard rail.
15. Refit the panniers as described in the service manual.

 **Warning**

After fitting the accessory kit the motorcycle will exhibit new handling characteristics. Operate the motorcycle in a safe area free from traffic to gain familiarity with any new characteristics. Operation of the motorcycle when not familiar with any new handling characteristics may result in loss of motorcycle control and an accident.

 **Warning**

If, after fitment of this accessory kit, you have any doubt about the performance of any aspect of the motorcycle, contact an authorised Triumph dealer and do not ride the motorcycle until the authorised dealer has declared it fit for use. Riding a motorcycle when there is any doubt as to any aspect of the performance of the motorcycle may result in loss of control of the motorcycle leading to an accident.

 **Warning**

Never ride an accessory equipped motorcycle (including those fitted with Triumph approved windscreens and luggage systems) at speeds above 80 mph (130 km/h).

The presence of accessories such as windscreens and luggage systems will cause changes in the stability and handling of the motorcycle. Failure to allow for changes in motorcycle stability may lead to loss of control or an accident.

Remember that the 80 mph (130 km/h) limit will be reduced by the fitting of non-approved accessories, incorrect loading, worn tyres, overall motorcycle condition and poor road or weather conditions.

 **Warning**

The motorcycle must not be operated above the legal road speed limit except in closed course conditions.

 **Warning**

Only operate this Triumph motorcycle at high speed in closed-course on road competition or on closed course racetracks. High speed operation should only be attempted by riders who have been instructed in the techniques necessary for high speed riding and are familiar with the motorcycle's characteristics in all conditions.

High speed operation in any other circumstances is dangerous and will lead to loss of motorcycle control and an accident.